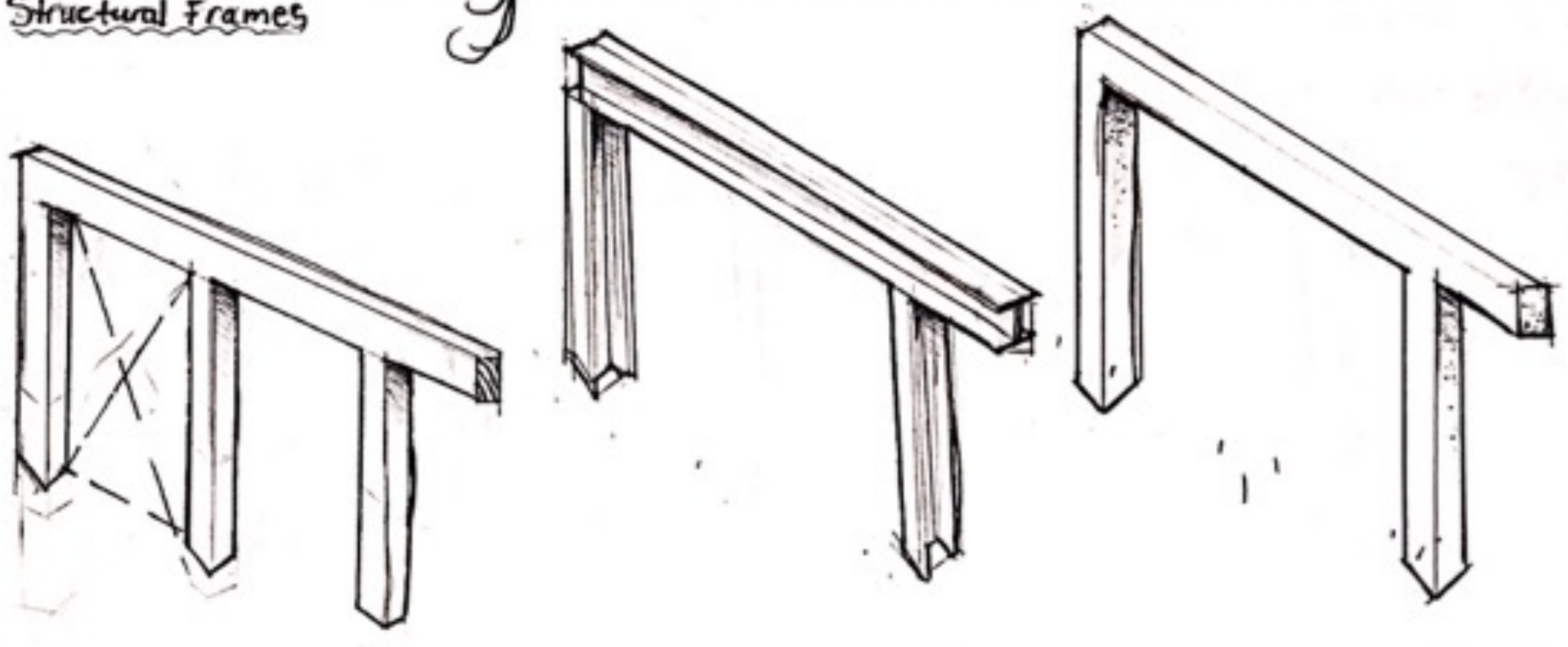
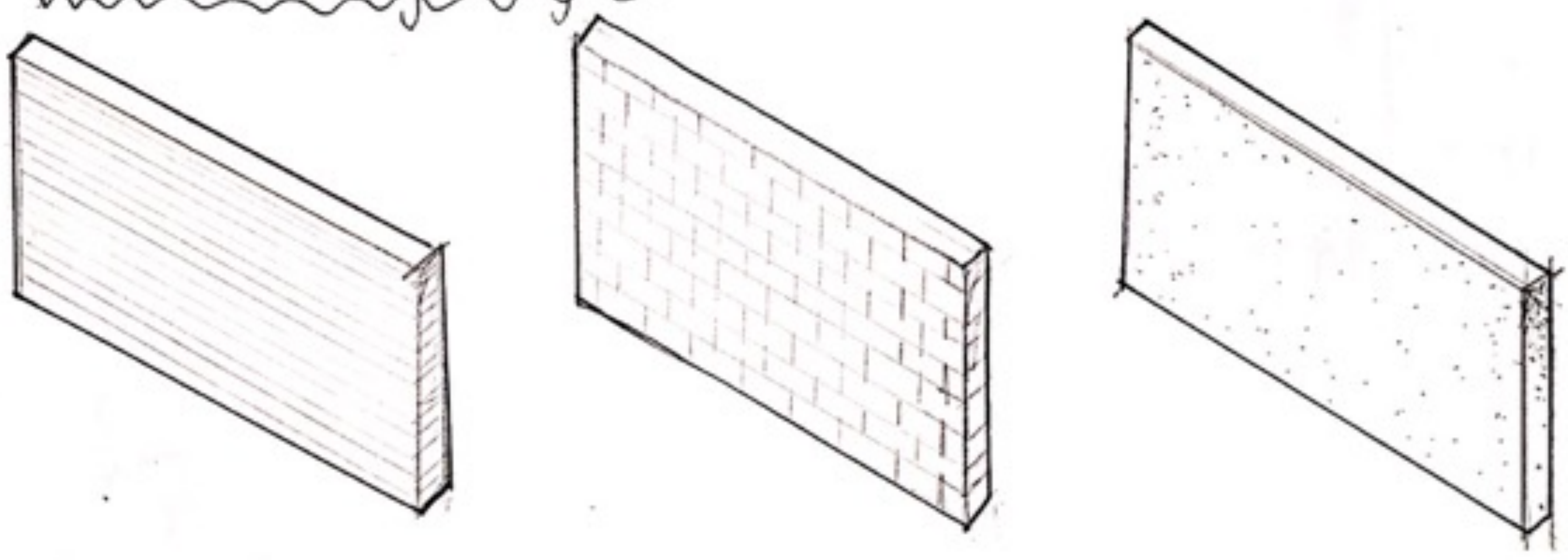


Wall Systems 5

Structural Frames

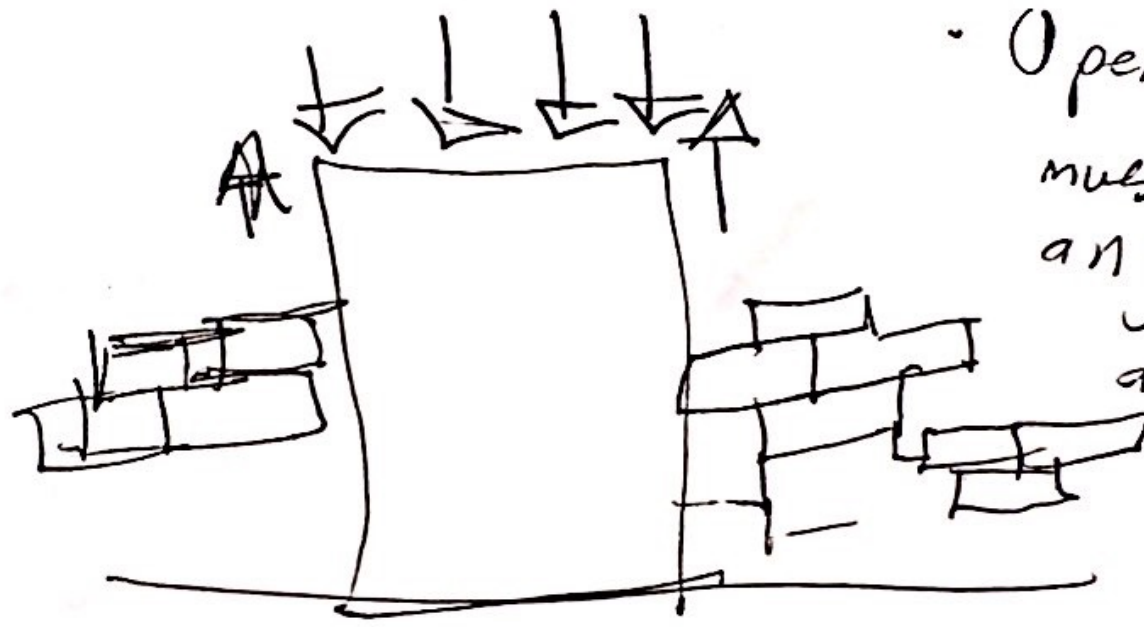
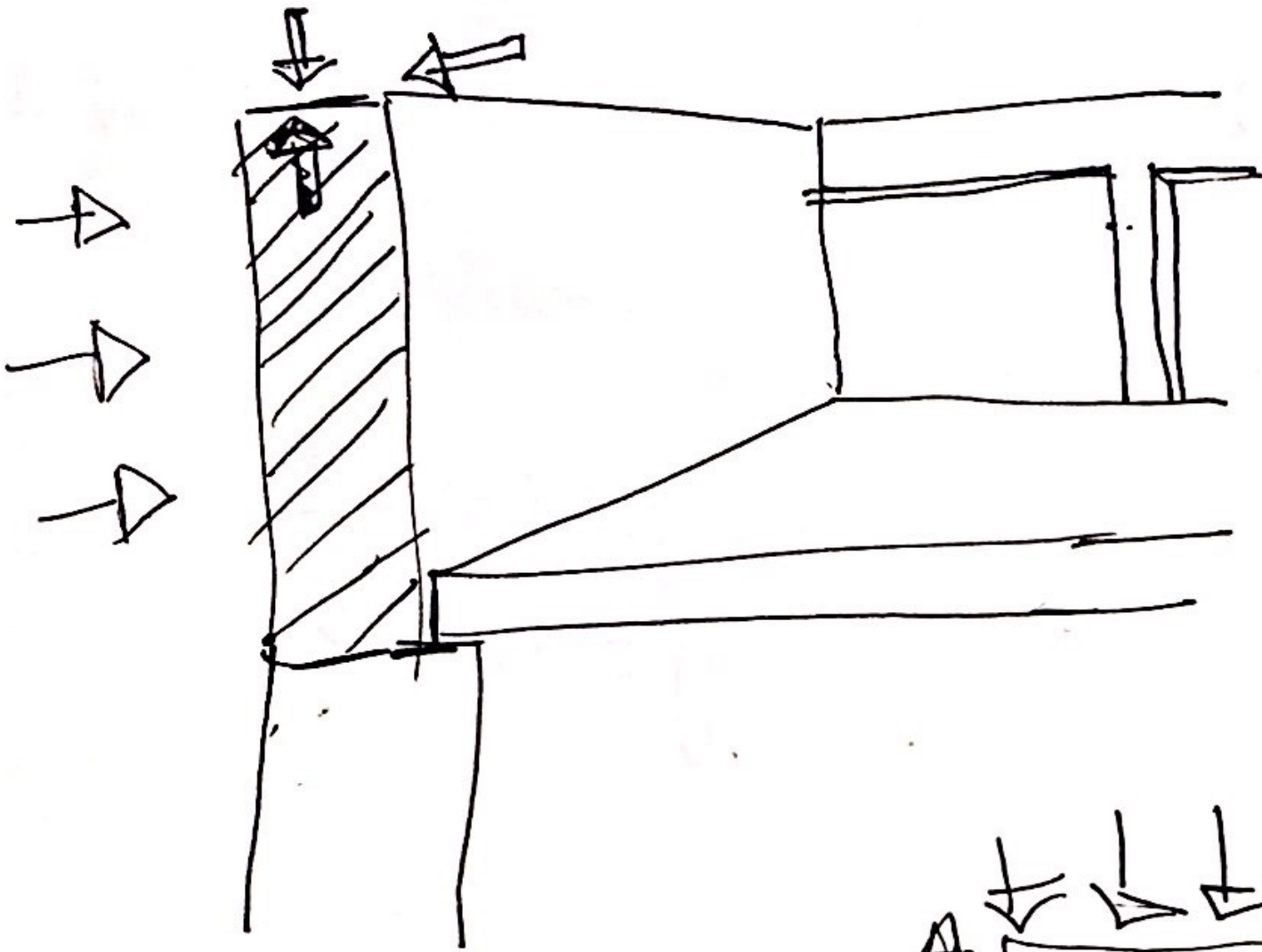


Concrete and Masonry Bearing Walls

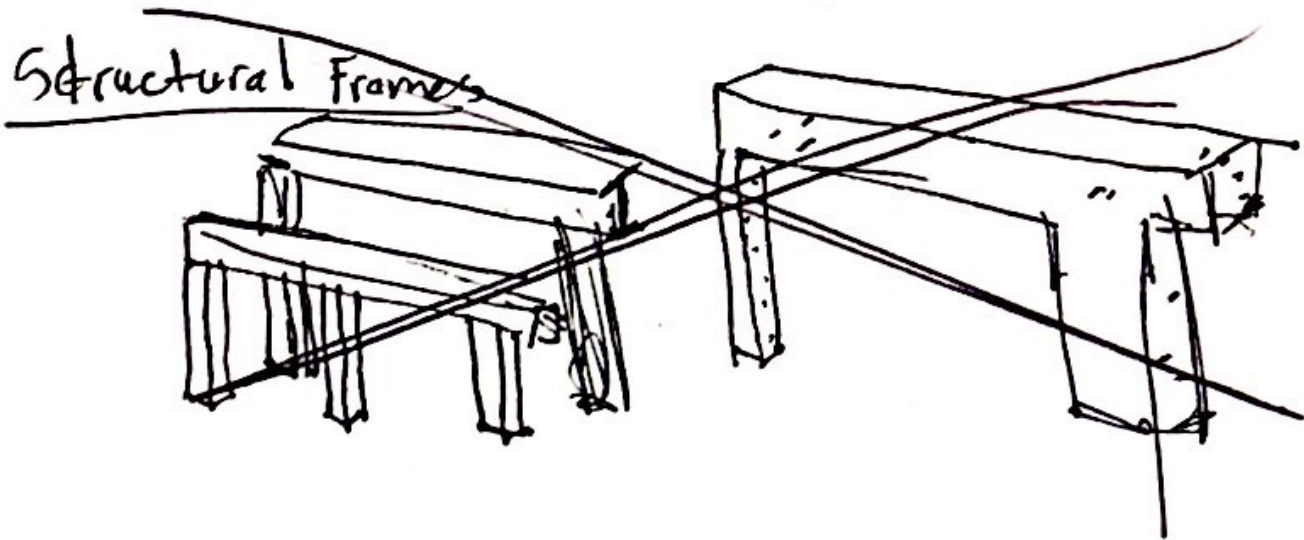


Wall Systems

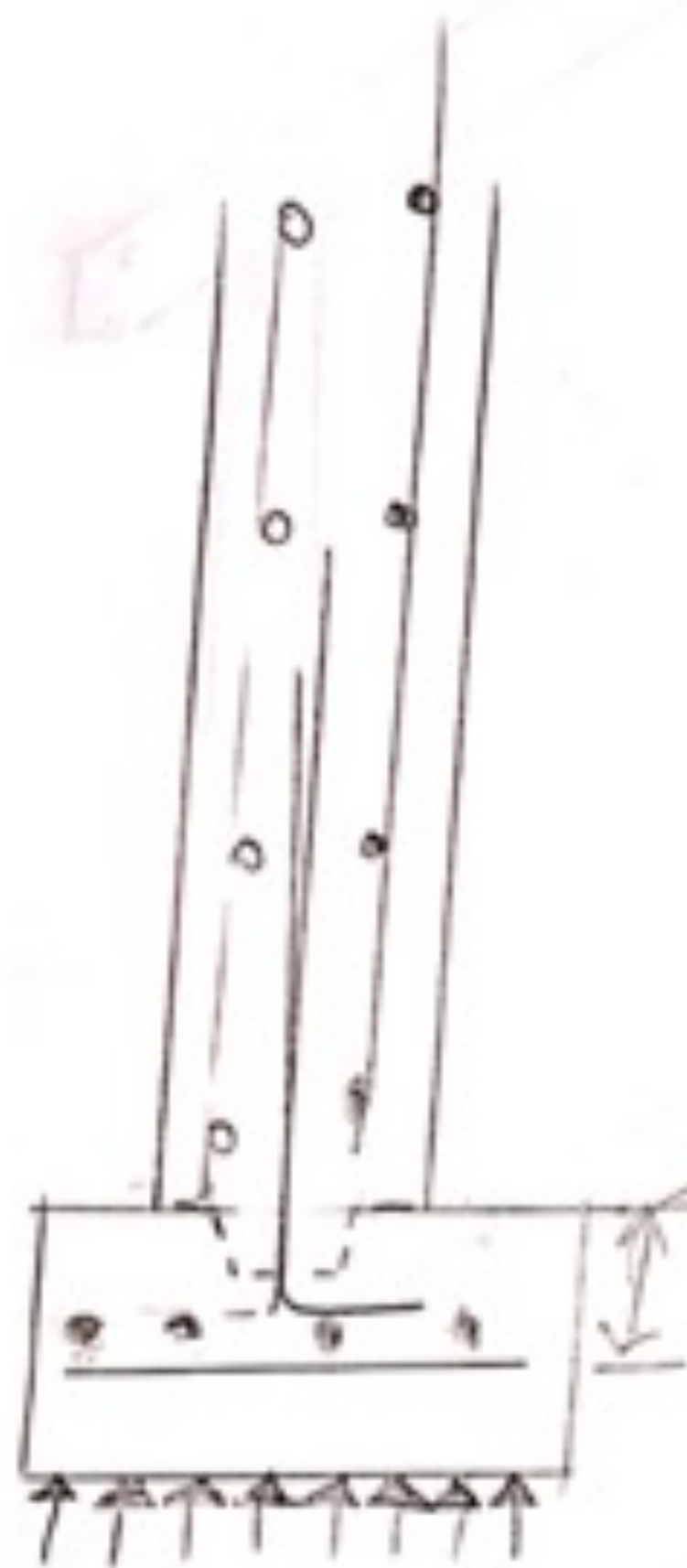
Walls are the vertical construction of a building that enclose, separate and protect its interior spaces, they may be load bearing.



• Openings for doors and windows must be constructed so that any vertical loads from above are distributed around the openings.



* Walls more than 10" thick require reinforcement in two layers placed parallel with the faces of the wall.



6" (150) minimum above reinforcement.

Aperture.

