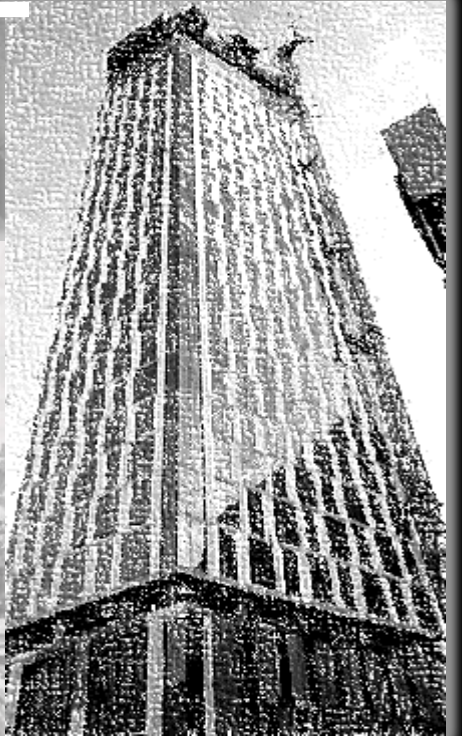
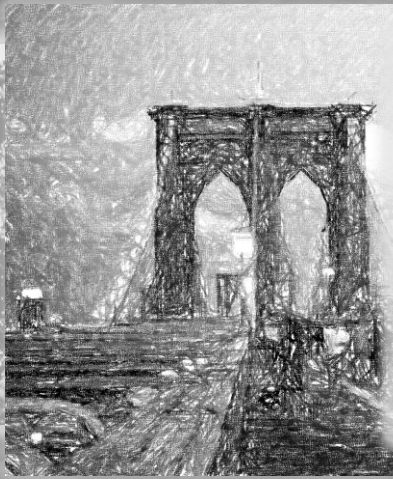


DOWNTOWN BROOKLYN
ARCHITECTURE
THEN AND NOW



JASON ANSAH

CHUNYU LAST

HISTORY

ZONING

THEN & NOW

METROTECH

OFFERMAN BLD.

ST. BONIFACE

226 TILLARY ST.

DUFF. HOUSES

DIME SAVINGS

DUFF./ WILL. ST.

385 JAY ST.

DEMOLITION 1

DEMOLITION 2

VOICE MEMO

VOICE MEMO

REFERENCES

HISTORY



HISTORICALLY, THE COMMUNITIES IN DOWNTOWN BROOKLYN EXPERIENCED A VAST CHANGE AND SHIFT WITHIN ITS CULTURE, PARTLY BECAUSE OF THE EVOLVEMENT IN ITS ARCHITECTURE. BROOKLYN IN 1834, WAS DEEMED TO BE A CITY OF ITS OWN DUE TO THE BOROUGH'S RAPID GROWTH OF IT'S COMMERCIAL, INDUSTRIAL AND RESIDENTIAL PRESENCE. LIKE EVERY CITY, TOWN AND ALL DISTINCT PLACES, ARCHITECTURE HAS BEEN KNOWN TO BE SIGNIFICANT SYMBOLS THAT COMMUNITIES RELY ON FOR MEMORABLE AND HISTORICAL VALIDATION.

OVER THE YEARS, THE COMMUNITIES OF DOWNTOWN BROOKLYN HAVE BEEN A VICTIM OF LOOSING MAGNIFICENT ARCHITECTURE. ARCHITECTURE THAT WAS/IS REVIVAL ARTISTICALLY DETAILED AND APPEARED TO STRUCTURALLY FIT TO STAND FOR YEARS.

[HTTPS://EPORTFOLIOS.MACAULAY.CUNY.EDU/DOWNTOWNBROOKLYN/HISTORY/](https://eportfolios.macaulay.cuny.edu/downtownbrooklyn/history/)



HISTORY

ZONING

THEN & NOW

METROTECH

OFFERMAN BLD.

ST. BONIFACE

226 TILLARY ST.

DUFF. HOUSES

DIME SAVINGS

DUFF./ WILL. ST.

385 JAY ST.

DEMOLITION 1

DEMOLITION 2

VOICE MEMO

VOICE MEMO

REFERENCES

THEN & NOW

THE TWO IMAGES DISPLAYS DOWNTOWN BROOKLYN VIEW FROM BIRDS EYE-VIEW BOTH THEN AND NOW. THE AREA APPEARS TO BE LOWER DENSE THEN AS COMPARED TO TODAYS IMAGE SHOWN ON THE RIGHT.



HISTORY

ZONING

THEN & NOW

METROTECH

OFFERMAN BLD.

ST. BONIFACE

226 TILLARY ST.

DUFF. HOUSES

DIME SAVINGS

DUFF./ WILL. ST.

385 JAY ST.

DEMOLITION 1

DEMOLITION 2

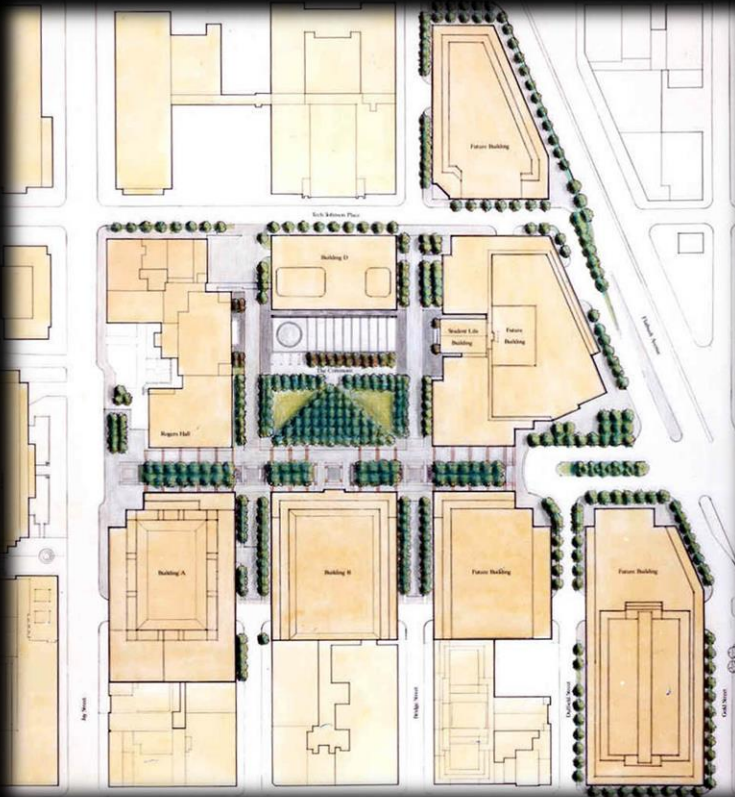
VOICE MEMO

VOICE MEMO

REFERENCES

METROTECH

TO THE LEFT IS A MASTER PLAN OF DOWNTOWN BROOKLYN'S METROTECH AND TO THE RIGHT IS A BUILT METROTECH VERY WELL INFLUENCED BY POST MODERN ARCHITECTURE



https://www.google.com/search?biw=1229&bih=568&tbm=isch&sxsrf=ACYBGNS4HSPCIVN025LVKzRELNH9ZPIV4w%3A1577108437185&sa=1&ei=1cMAXsRRCTM6TABFRPQOCg&q=METROTECH+BROOKLYN&oq=METRO+TECH+BROOKLYN&gs_l=img.1.0.0i10124j0i24l2.5902.8357..10005...0.0..0.69.657.11.....0...1..GWS-WIZ-IMG.....0i67j0j0i30.LLQDHHAP5MM#imgrc=JU4URDVLUXN-NM:

HISTORY

ZONING

THEN & NOW

METROTECH

OFFERMAN BLD.

ST. BONIFACE

226 TILLARY ST.

DUFF. HOUSES

DIME SAVINGS

DUFF./ WILL. ST.

385 JAY ST.

DEMOLITION 1

DEMOLITION 2

VOICE MEMO

VOICE MEMO

REFERENCES

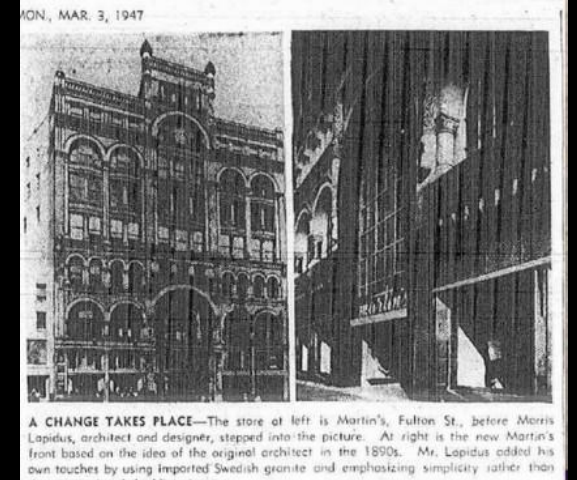
OFFERMAN BLD.

OFFERMAN BUILDING

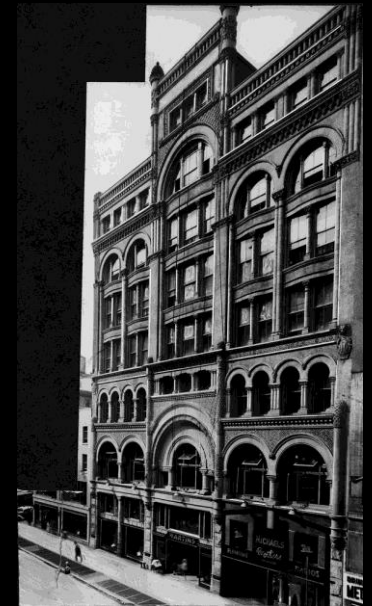


[HTTPS://NY.CURBED.COM/2017/7/10/15947668/DOWNTOWN-BROOKLYN-OFFERMAN-BUILDING-HISTORIC-RENTALS](https://ny.curbed.com/2017/7/10/15947668/downtown-brooklyn-offerman-building-historic-rentals)

[HTTPS://WWW.GOOGLE.COM/SEARCH?Q=OLD+PICTURES+OF+OFFERMAN+BUILDING&SXSRF=AC_YBGNS_ON4FM_P4OMBWSJYGRZODKAFURG:1577104434660&SOURCE=LNMS&TBM=ISCH&SA=X&VED=2AHUKewizOefs48vMAHXCF80KHZ12CUOQ_AUGAXoECAWQAW&BIW=1229&BIH=568#imgdii=D8QFN1JBA91Jp7M:&imgsrc=wSg3Kc_90Kd4WM](https://www.google.com/search?q=old+pictures+of+Offerman+Building&sxsrq=AC_YBGNS_ON4FM_P4OMBWSJYGRZODKAFURG:1577104434660&source=LNMS&tbm=isch&sa=X&ved=2AHUKewizOefs48vMAHXCF80KHZ12CUOQ_AUGAXoECAWQAW&biw=1229&bih=568#imgdii=D8QFN1JBA91Jp7M:&imgsrc=wSg3Kc_90Kd4WM)



A CHANGE TAKES PLACE—The store on left is Martin's, Fulton St., before Morris Lapidus, architect and designer, stepped into the picture. At right is the new Martin's front based on the idea of the original architect in the 1890s. Mr. Lapidus added his own touches by using imported Swedish granite and emphasizing simplicity rather than



HISTORY

ZONING

THEN & NOW

METROTECH

OFFERMAN BLD.

ST. BONIFACE

226 TILLARY ST.

DUFF. HOUSES

DIME SAVINGS

DUFF./ WILL. ST.

385 JAY ST.

DEMOLITION 1

DEMOLITION 2

VOICE MEMO

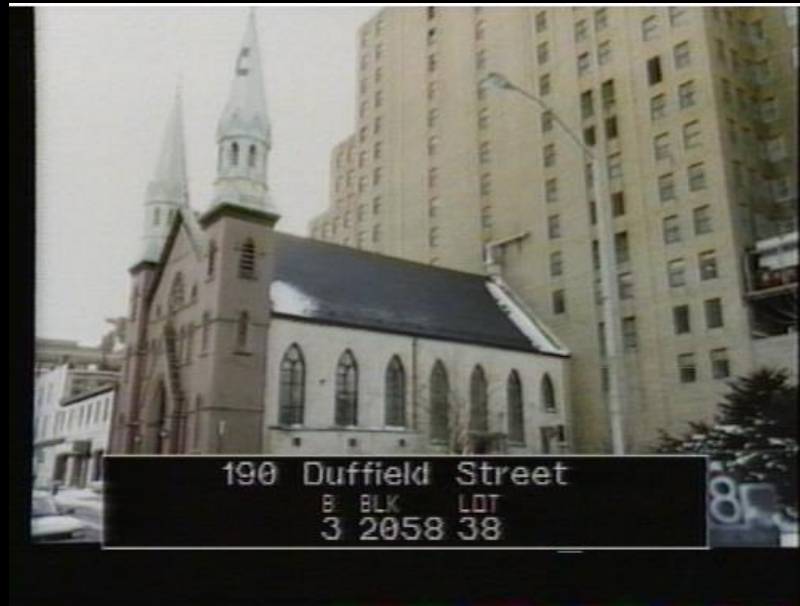
VOICE MEMO

REFERENCES

ST. BONIFACE

THE ORATORY CHURCH OF ST. BONIFACE.

LEFT IMAGE IS A 1980 TAX PHOTO AND TO THE RIGHT OF IT IS TODAY'S IMAGE



[HTTP://NYCMA.LUNAIMAGING.COM/LUNA/SERVLET/DETAIL/RECORDSPHOTOUNITBRK~1~1~617193~147076:DOF_3_02058_0038?qvq=q:DUFFIELD%20st&MI=0&TRS=3](http://NYCMA.LUNAIMAGING.COM/LUNA/SERVLET/DETAIL/RECORDSPHOTOUNITBRK~1~1~617193~147076:DOF_3_02058_0038?qvq=q:DUFFIELD%20st&MI=0&TRS=3)

[HTTP://NYCMA.LUNAIMAGING.COM/LUNA/SERVLET/DETAIL/RECORDSPHOTOUNITBRK~1~1~617193~147076:DOF_3_02058_0038?qvq=q:DUFFIELD%20st&MI=0&TRS=3](http://NYCMA.LUNAIMAGING.COM/LUNA/SERVLET/DETAIL/RECORDSPHOTOUNITBRK~1~1~617193~147076:DOF_3_02058_0038?qvq=q:DUFFIELD%20st&MI=0&TRS=3)

HISTORY

ZONING

THEN & NOW

METROTECH

OFFERMAN BLD.

ST. BONIFACE

226 TILLARY ST.

DUFF. HOUSES

DIME SAVINGS

DUFF./ WILL. ST.

385 JAY ST.

DEMOLITION 1

DEMOLITION 2

VOICE MEMO

VOICE MEMO

REFERENCES

226 TILLARY ST.

226 TILLARY ST.

A HOME, BUILT IN 1939- 1941 WITH AN OLD ADDRESS, 226 TILLARY ST. CAN NO LONGER BE LOCATED.



[HTTP://NYCMA.LUNAIMAGING.COM/LUNA/SERVLET/DETAIL/NYCMA~7~7~987895~681220?qvq=q%3ATILLARY%20STREET%20BROOKLYN&MI=41&TRS=74](http://NYCMA.LUNAIMAGING.COM/LUNA/SERVLET/DETAIL/NYCMA~7~7~987895~681220?qvq=q%3ATILLARY%20STREET%20BROOKLYN&MI=41&TRS=74)

HISTORY

ZONING

THEN & NOW

METROTECH

OFFERMAN BLD.

ST. BONIFACE

226 TILLARY ST.

DUFF. HOUSES

DIME SAVINGS

DUFF./ WILL. ST.

385 JAY ST.

DEMOLITION 1

DEMOLITION 2

VOICE MEMO

VOICE MEMO

REFERENCES

DUFFIELD HOUSES

DUFF. HOUSES

THE DUFFIELD HOUSES WERE FORMERLY KNOWN AS THE "JOHNSON HOUSES" BETWEEN 1835 AND 1847. THESE BUILDINGS WITH ITS FEDERAL STYLE ARCHITECTURE, HAS BEEN PRESERVED TO DATE.



[HTTP://WWW.NEIGHBORHOODPRESERVATIONCENTER.ORG/DB/BB_FILES/01-DUFFIELD-ST.-HOUSES.PDF](http://www.neighborhoodpreservationcenter.org/db/bb_files/01-DUFFIELD-ST.-HOUSES.PDF)

HISTORY

ZONING

THEN & NOW

METROTECH

OFFERMAN BLD.

ST. BONIFACE

226 TILLARY ST.

DUFF. HOUSES

DIME SAVINGS

DUFF./ WILL. ST.

385 JAY ST.

DEMOLITION 1

DEMOLITION 2

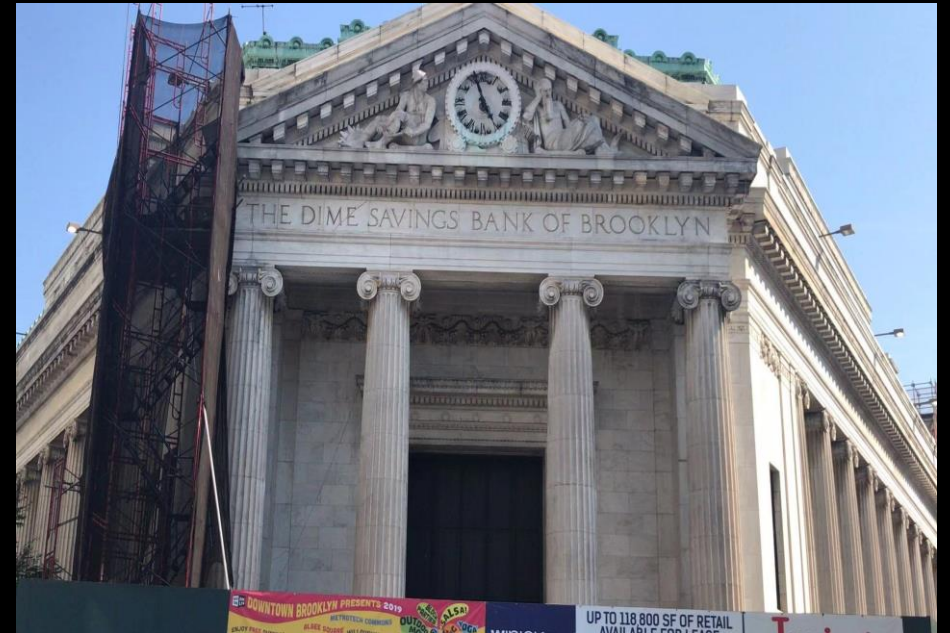
VOICE MEMO

VOICE MEMO

REFERENCES

DIME SAVINGS

THE DIME SAVING BANK BEING RECONSTRUCTED AS PART OF THE RENEWAL



IRMA AND PAUL MILSTEIN DIVISION OF UNITED STATES HISTORY, LOCAL HISTORY AND GENEALOGY, THE NEW YORK PUBLIC LIBRARY. (1944). *DIME SAVINGS BANK IN BROOKLYN DURING A SNOW STORM* RETRIEVED FROM [HTTP://DIGITALCOLLECTIONS.NYPL.ORG/ITEMS/CF91A420-A682-0133-2C1C-00505686D14E](http://digitalcollections.nypl.org/items/cf91a420-a682-0133-2c1c-00505686d14e)

DUFFIELD STREET AND WILLOUGHBY STREET (1941)

DUFF./ WILL. ST.

HISTORY

ZONING

THEN & NOW

METROTECH

OFFERMAN BLD.

ST. BONIFACE

226 TILLARY ST.

DUFF. HOUSES

DIME SAVINGS

DUFF./ WILL. ST.

385 JAY ST.

DEMOLITION 1

DEMOLITION 2

VOICE MEMO

VOICE MEMO

REFERENCES



Duffield St
Bklyn



HISTORY

ZONING

THEN & NOW

METROTECH

OFFERMAN BLD.

ST. BONIFACE

226 TILLARY ST.

DUFF. HOUSES

DIME SAVINGS

DUFF./ WILL. ST.

385 JAY ST.

DEMOLITION 1

DEMOLITION 2

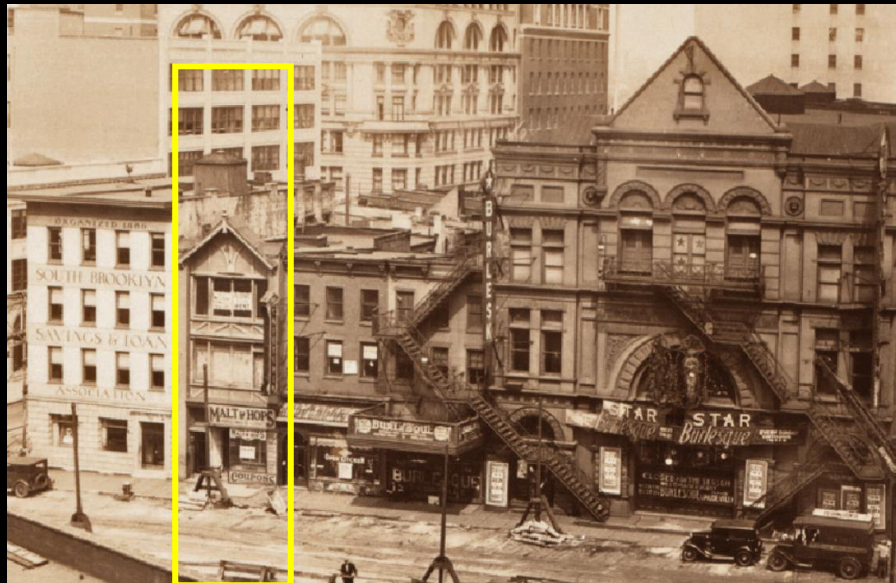
VOICE MEMO

VOICE MEMO

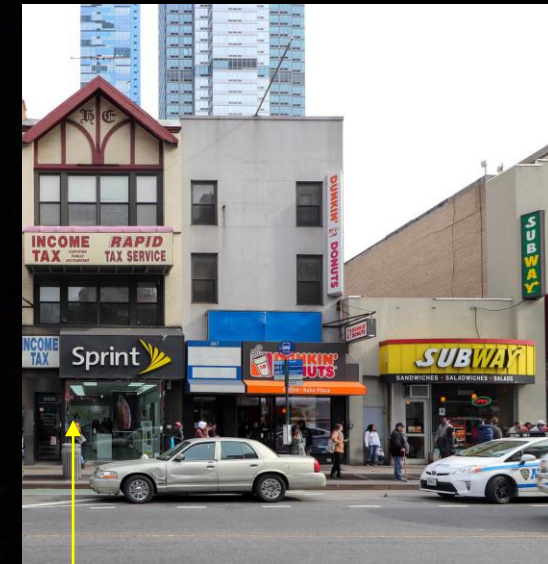
REFERENCES

385 JAY ST.

FAR LET IS A VACANT 385 JAY ST. IN 1930, THE PICTURE THAT FOLLOWS IS A 1980 TAX PHOTO OF THE BUILDING, AND FINALLY, THE LAST PICTURE IS THE PRESENT LOOK OF THE SAME BUILDING



385 Jay Street
B BLK LOT
3 151 21



[HTTPS://WWW.BROWNSTONER.COM/ARCHITECTURE/BROOKLYN-ARCHITECTURE-DOWNTOWN-BROOKLYN-385-JAY-STREET/](https://www.brownstoner.com/architecture/brooklyn-architecture-downtown-brooklyn-385-jay-street/)

HISTORY

ZONING

THEN & NOW

METROTECH

OFFERMAN BLD.

ST. BONIFACE

226 TILLARY ST.

DUFF. HOUSES

DIME SAVINGS

DUFF./ WILL. ST.

385 JAY ST.

DEMOLITION 1

DEMOLITION 2

VOICE MEMO

VOICE MEMO

REFERENCES

DEMOLITION/ 1

PHASE 1 DEMOLITION OF CONSTRUCTION AROUND METRO-TECH

- DURING THE FIRST THREE YEARS OF THE PHASE 1, THERE WERE 104 RESIDENTIAL HOUSES BEEN TAKEN DOWN DUE TO THE PLAN.
- WITHIN THE NEXT FEW YEARS, THERE ARE MORE HOUSES TAKEN DOWN AND START TO BUILD COMMERCIAL BUILDINGS.
- MANY PEOPLE BEEN DISPLACED DUE TO THE PLAN AND ON THE LAST YEAR OF THE PHASE 1, TOTAL OF 252 RESIDENTIAL AND MIXED-USE UNITS BEEN TAKEN DOWN BY THE PROJECT.

Phase II					
Demolition/Construction Year(s)	Block	Lot	Occupied Residential Units	# Residents	
3	2047	13(5)			
3,4&5		27	1	2	
		29	2	4	
		31	0	0	
		Sub-total:	3	6	
4&5	132	1	0	0	
		6	0	0	
		7	0	0	
		8	0	0	
		9	0	0	
		10	0	0	
		12	0	0	
		14	0	0	
		23	0	0	
		35	0	0	
		Sub-total:	0	0	

Demolition/Construction Year(s)	Block	Lot	Occupied Residential Units	# Residents
3,4&5	2048	1	2	4
		2	0	0
		3	0	0
		6	0	0
		9	0	0
		34	0	0
		35	0	0
		40	0	0
		(8)	2	4
		Sub-total:	4	8
5&6	2060	8	0	0
		Sub-total:	0	0
5&6	2059	1	0	0
		2	0	0
		3	0	0
		4	0	0
		7	0	0
		8	0	0
		12	0	0
		14	0	0
		17	0	0
		18	0	0
		19	0	0
		20	0	0
		21	0	0
		22	0	0
		23	2	4
		24	2	4
		25	1	2
		26	0	0
		27	0	0

Demolition/Construction Year(s)	Block	Lot	Occupied Residential Units	# Residents
5 & 6	2059	29	0	0
cont'd	cont'd	30	2	4
		31	2	4
		32	0	0
		35	0	0
		36	0	0
		39	0	0
		44	0	0
		48	0	0
		51(7)	0	0
		52(7)	0	0
		53	0	0
		54	0	0
		Sub-total:	9	18

HISTORY

ZONING

THEN & NOW

METROTECH

OFFERMAN BLD.

ST. BONIFACE

226 TILLARY ST.

DUFF. HOUSES

DIME SAVINGS

DUFF./ WILL. ST.

385 JAY ST.

DEMOLITION 1

DEMOLITION 2

VOICE MEMO

VOICE MEMO

REFERENCES

DEMOLITION/ 2

PHASE 2 DEMOLITION OF CONSTRUCTION

- SIMILARLY TO PHASE 1 ,THERE ARE LOTS OF HOUSES AND BUSINESS BUILDINGS BEEN TAKEN DOWN
- LUCKILY, THERE AREN'T AS MANY COMPARED TO PHASE 1 , BUT STILL SOME MORE.
- THE COMMUNITIES WERE DESTROYED DUE TO DISPLACEMENT.

Phase II		Block	Lot	Occupied Residential Units	# Residents
3	2047	13(5)			
3,4&5		27	1	2	
		29	2	4	
		31	0	0	
		Sub-total:	3	6	
4&5	132	1	0	0	
		6	0	0	
		7	0	0	
		8	0	0	
		9	0	0	
		10	0	0	
		12	0	0	
		14	0	0	
		23	0	0	
		35	0	0	
		Sub-total:	0	0	

Demolition/Construction Year(s)	Block	Lot	Occupied Residential Units	# Residents
3,4&5	2048	1	2	4
		2	0	0
		3	0	0
		6	0	0
		9	0	0
		34	0	0
		35	0	0
		40	0	0
		[8]	2	4
		Sub-total:	4	8
5&6	2060	8	0	0
		Sub-total:	0	0
5&6	2059	1	0	0
		2	0	0
		3	0	0
		4	0	0
		7	0	0
		8	0	0
		12	0	0
		14	0	0
		17	0	0
		18	0	0
		19	0	0
		20	0	0
		21	0	0
		22	0	0
		23	2	4
		24	2	4
		25	1	2
		26	0	0
		27	0	0

Demolition/Construction Year(s)	Block	Lot	Occupied Residential Units	# Residents
5 & 6	2059	29	0	0
cont'd	cont'd	30	2	4
		31	2	4
		32	0	0
		35	0	0
		36	0	0
		39	0	0
		44	0	0
		48	0	0
		51(7)	0	0
		52(7)	0	0
		53	0	0
		54	0	0
		Sub-total:	9	18

HISTORY

ZONING

THEN & NOW

METROTECH

OFFERMAN BLD.

ST. BONIFACE

226 TILLARY ST.

DUFF. HOUSES

DIME SAVINGS

DUFF./ WILL. ST.

385 JAY ST.

DEMOLITION 1

DEMOLITION 2

VOICE MEMO

VOICE MEMO

REFERENCES

VOICE MEMO



HISTORY

MAP
ZONING

THEN & NOW

METROTECH

OFFERMAN BLD.

ST. BONIFACE

226 TILLARY ST.

DUFF. HOUSES

DIME SAVINGS

DUFF./ WILL. ST.

385 JAY ST.

DEMOLITION 1

DEMOLITION 2

VOICE MEMO

VOICE MEMO

REFERENCES

VOICE MEMO



HISTORY

MAP
ZONING

THEN & NOW

METROTECH

OFFERMAN BLD.

ST. BONIFACE

226 TILLARY ST.

DUFF. HOUSES

DIME SAVINGS

DUFF./ WILL. ST.

385 JAY ST.

DEMOLITION 1

DEMOLITION 2

VOICE MEMO

VOICE MEMO

REFERENCES

REFERENCES

- IRMA AND PAUL MILSTEIN DIVISION OF UNITED STATES HISTORY, LOCAL HISTORY AND GENEALOGY, THE NEW YORK PUBLIC LIBRARY. (1944). *DIME SAVINGS BANK IN BROOKLYN DURING A SNOW STORM* RETRIEVED FROM [HTTP://DIGITALCOLLECTIONS.NYPL.ORG/ITEMS/CF91A420-A682-0133-2c1c-00505686d14e](http://digitalcollections.nypl.org/items/cf91a420-a682-0133-2c1c-00505686d14e)
- METROTECH. (N.D.). RETRIEVED FROM [HTTPS://BOOKS.GOOGLE.COM/BOOKS?ID=1Nk3AQAAMAAJ&PRINTSEC=FRONTCOVER&DQ=METRO+TECH&HL=EN&NEWBKS=1&NEWBKS_REDIR=0&SA=X&VED=2AHUKEWJV9R29YcLLAHXGUVKkHTXKC-0Q6AEWAH0ECAAQAG#v=onepage&q=metro+tech&f=false](https://books.google.com/books?id=1Nk3AQAAMAAJ&printsec=frontcover&dq=metro+tech&hl=en&newbks=1&newbks_redir=0&sa=x&ved=2AHUKEWJV9R29YcLLAHXGUVKkHTXKC-0Q6AEWAH0ECAAQAG#v=onepage&q=metro+tech&f=false).
- RETRIEVED FROM [HTTPS://WWW.NYTIMES.COM/GET-STARTED/HOW-CAN-WE-HELP?CAMPAIGNID=7QQFH&EXIT_URI=HTTPS://WWW.NYTIMES.COM/1989/01/22/REALESTATE/TRANSFORMING-DOWNTOWN-BROOKLYN.HTML?_r=1®ister&auth=register-google](https://www.nytimes.com/get-started/how-can-we-help?campaignid=7QQFH&exit_uri=https://www.nytimes.com/1989/01/22/realestate/transforming-downtown-brooklyn.html?_r=1®ister&auth=register-google).
- [HTTPS://EPORTFOLIOS.MACAULAY.CUNY.EDU/DOWNTOWNBROOKLYN/HISTORY/](https://eportfolios.macaulay.cuny.edu/downtownbrooklyn/history/)
- [HTTP://NYCMA.LUNAIMAGING.COM/LUNA/SERVLET/DETAIL/NYCMA~7~7~987895~681220?qvq=q%3Atillary%20street%20Brooklyn&mi=41&trs=74](http://nycma.lunaimaging.com/luna/servlet/detail/nycma~7~7~987895~681220?qvq=q%3Atillary%20street%20Brooklyn&mi=41&trs=74)
- [HTTPS://WWW.BROWNSTONER.COM/ARCHITECTURE/BROOKLYN-ARCHITECTURE-DOWNTOWN-BROOKLYN-385-JAY-STREET/](https://www.brownstoner.com/architecture/brooklyn-architecture-downtown-brooklyn-385-jay-street/)
- [HTTP://WWW.NEIGHBORHOODPRESERVATIONCENTER.ORG/DB/BB_FILES/01-DUFFIELD-ST.-HOUSES.PDF](http://www.neighborhoodpreservationcenter.org/db/bb_files/01-Duffield-St.-Houses.pdf)
- [HTTP://NYCMA.LUNAIMAGING.COM/LUNA/SERVLET/DETAIL/RECORDSPHOTOUNITBRK~1~1~617193~147076:DOF_3_02058_0038?qvq=q:DUFFIELD%20st&mi=0&trs=3](http://nycma.lunaimaging.com/luna/servlet/detail/recordsphotounitbrk~1~1~617193~147076:DOF_3_02058_0038?qvq=q:Duffield%20st&mi=0&trs=3)
- [HTTP://NYCMA.LUNAIMAGING.COM/LUNA/SERVLET/DETAIL/RECORDSPHOTOUNITBRK~1~1~617193~147076:DOF_3_02058_0038?qvq=q:DUFFIELD%20st&mi=0&trs=3](http://nycma.lunaimaging.com/luna/servlet/detail/recordsphotounitbrk~1~1~617193~147076:DOF_3_02058_0038?qvq=q:Duffield%20st&mi=0&trs=3)
- [HTTPS://NY.CURBED.COM/2017/7/10/15947668/DOWNTOWN-BROOKLYN-OFFERMAN-BUILDING-HISTORIC-RENTALS](https://ny.curbed.com/2017/7/10/15947668/downtown-brooklyn-offerman-building-historic-rentals)
- [HTTPS://WWW.GOOGLE.COM/SEARCH?q=OLD+PICTURES+OF+OFFERMAN+BUILDING&SXSrf=AcyBgNS_Dn4FM_P40MBwsjYGRzODKafurg:1577104434660&source=lnms&tbm=isch&sa=x&ved=2AHUKEWIZ0efs48VMahXCF80KHZ12CUOQ_AUoAXoECAwQAw&biw=1229&bih=568#imgdii=DBQf01jBA9UR7M:&imgrc=WS63Kc_9QKd4WM:](https://www.google.com/search?q=old+pictures+of+Offerman+Building&sxsr=AcyBgNS_Dn4FM_P40MBwsjYGRzODKafurg:1577104434660&source=lnms&tbm=isch&sa=x&ved=2AHUKEWIZ0efs48VMahXCF80KHZ12CUOQ_AUoAXoECAwQAw&biw=1229&bih=568#imgdii=DBQf01jBA9UR7M:&imgrc=WS63Kc_9QKd4WM;)