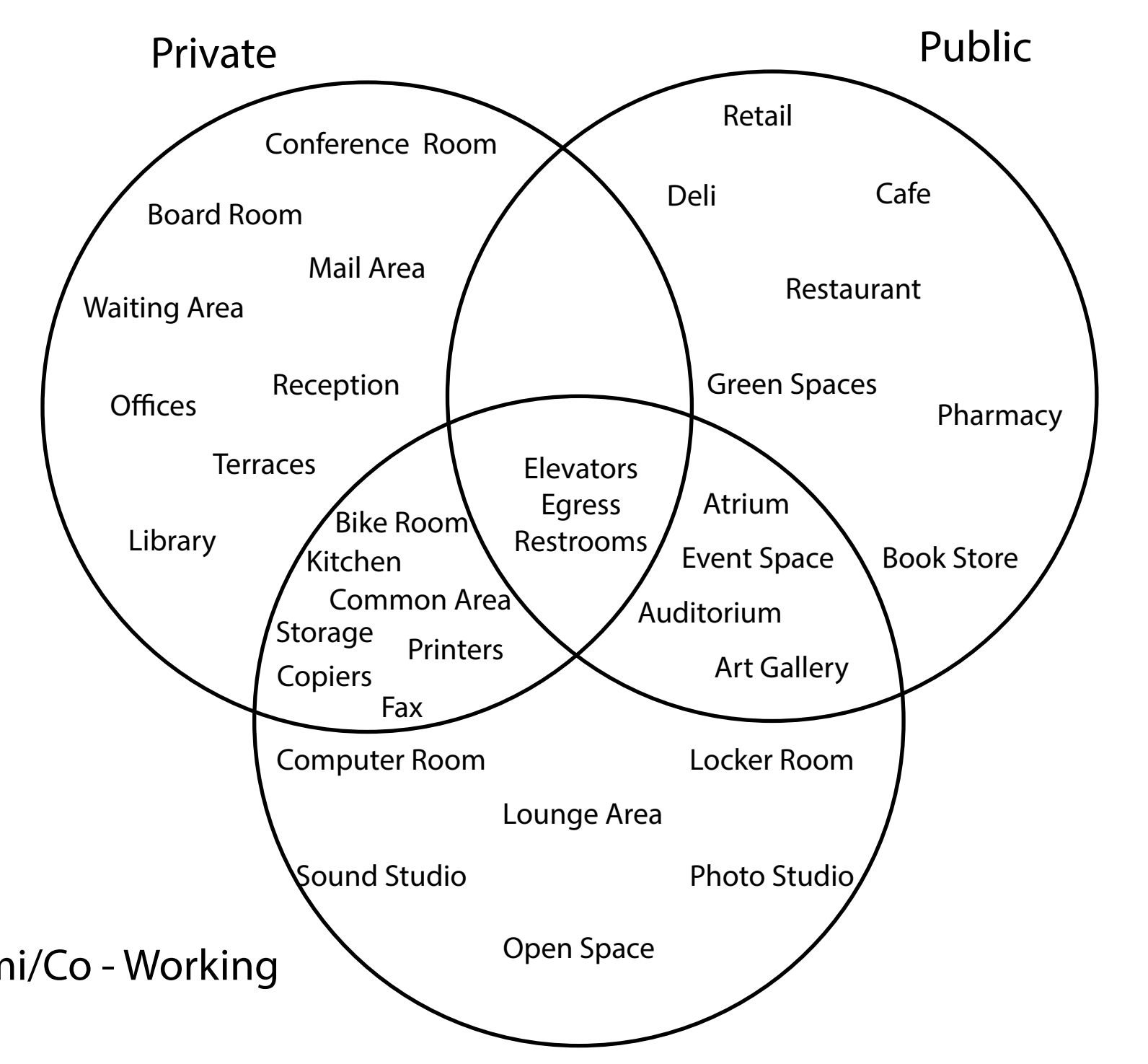
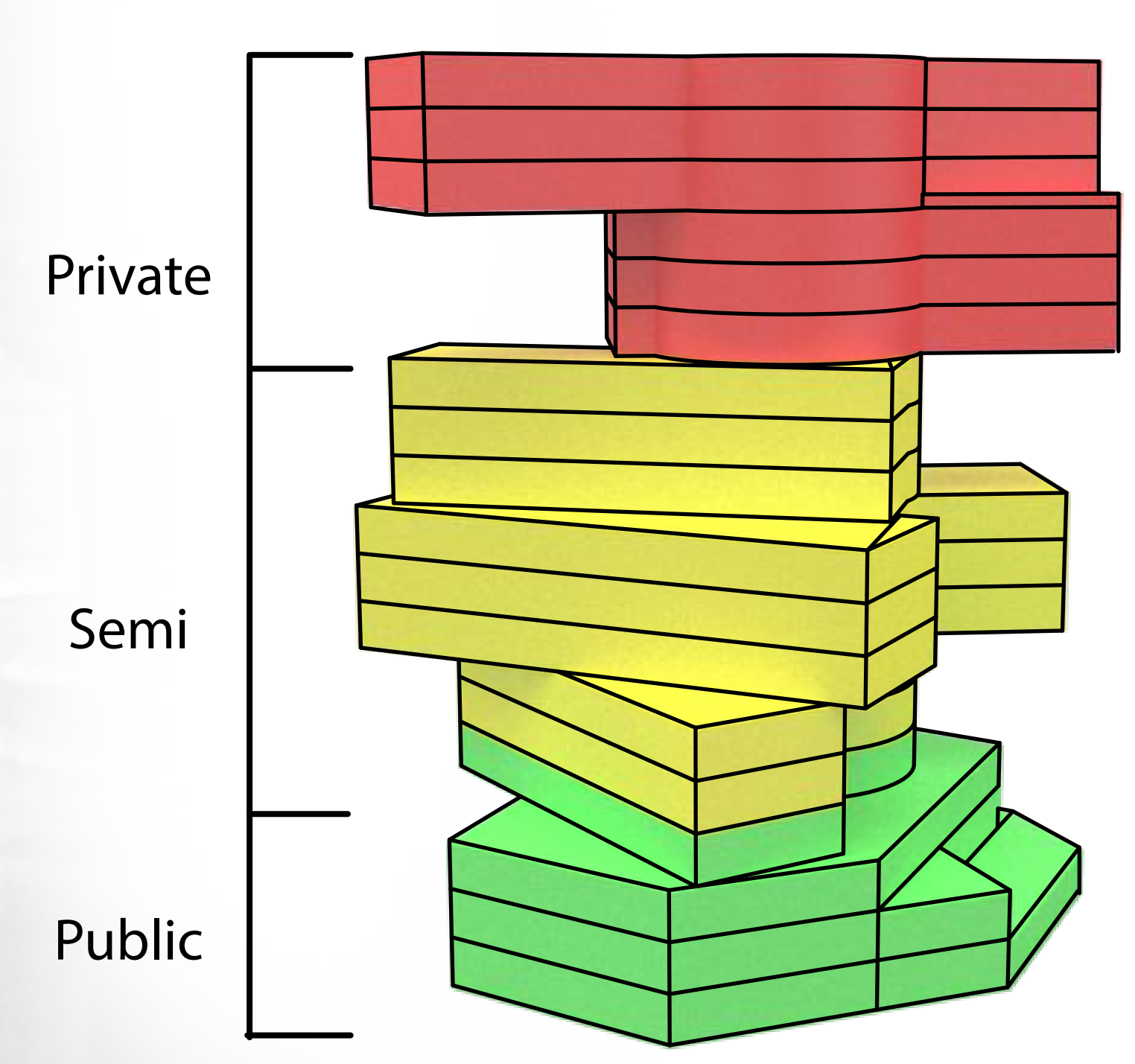
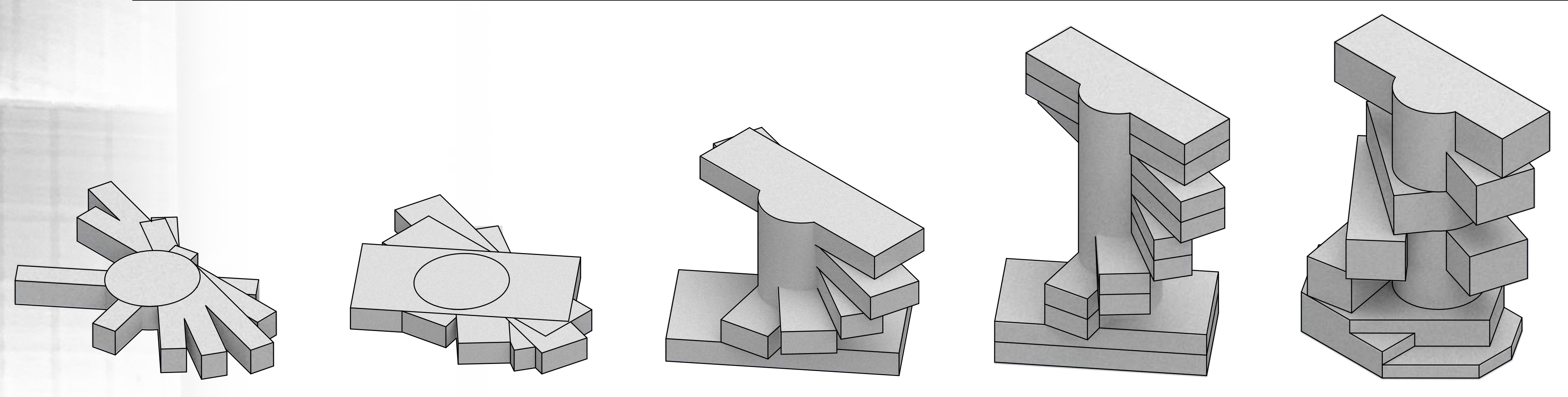
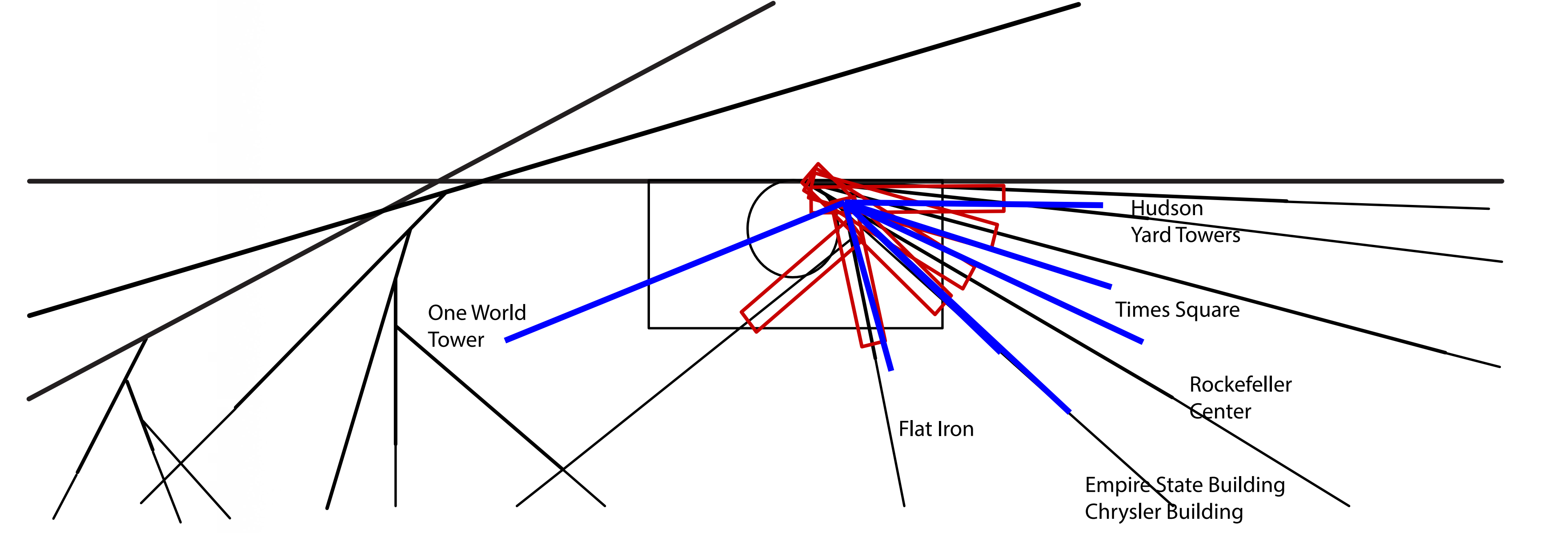
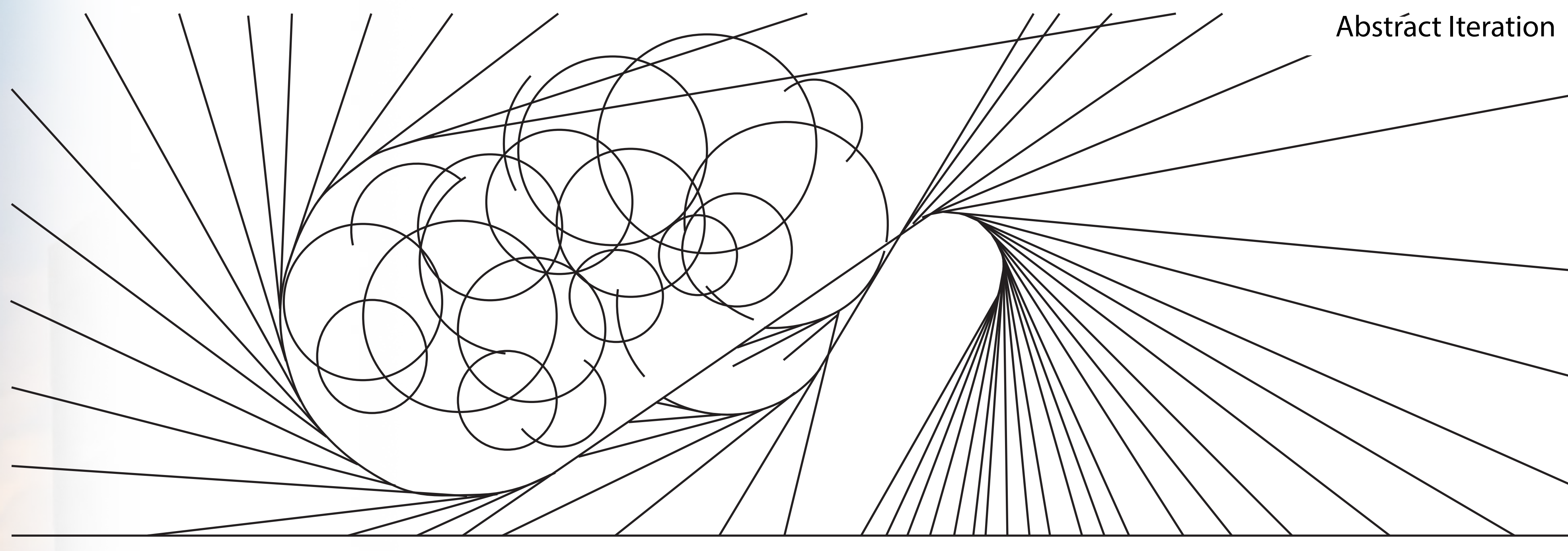
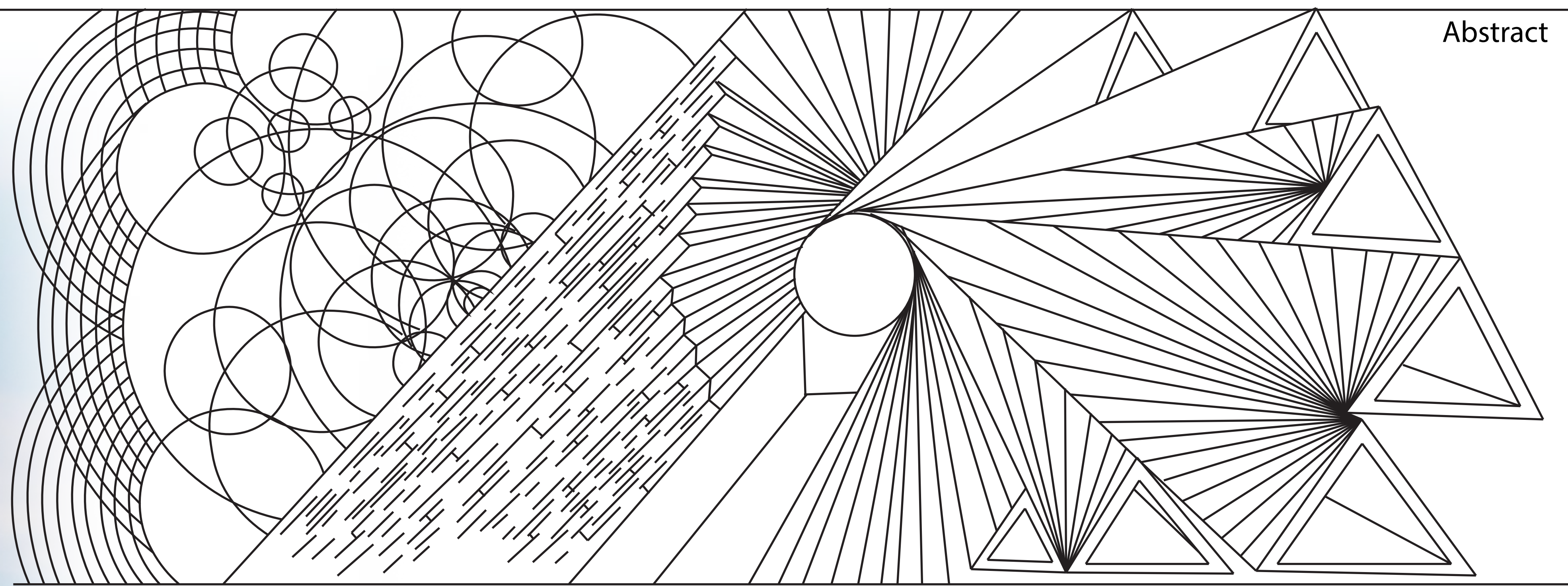
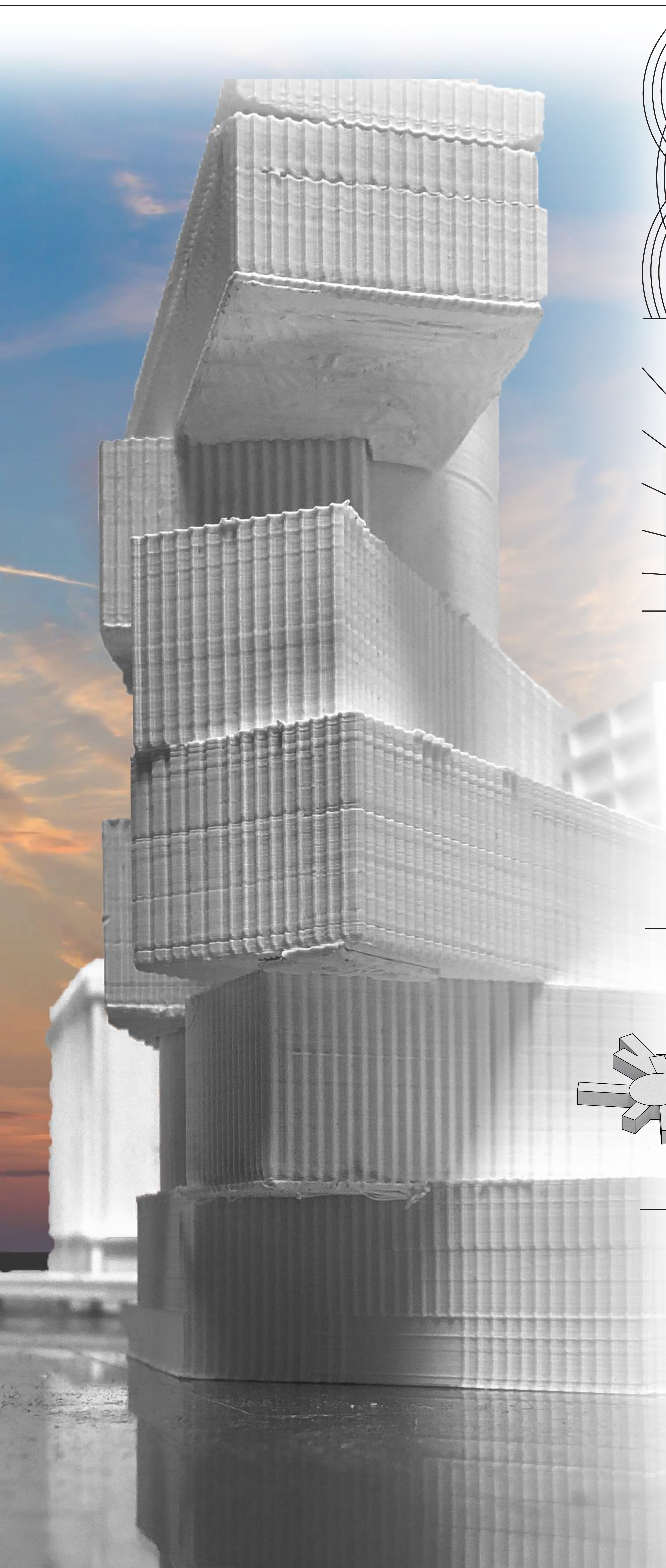
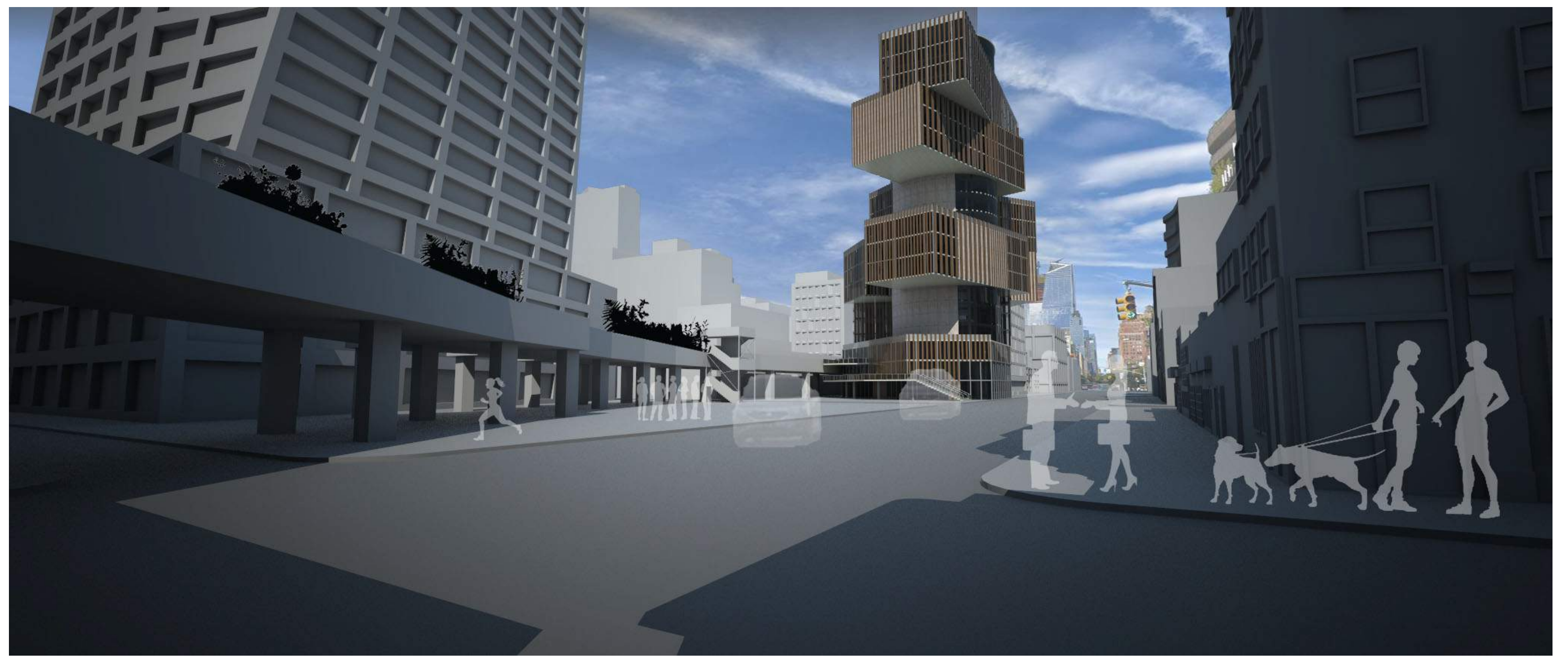
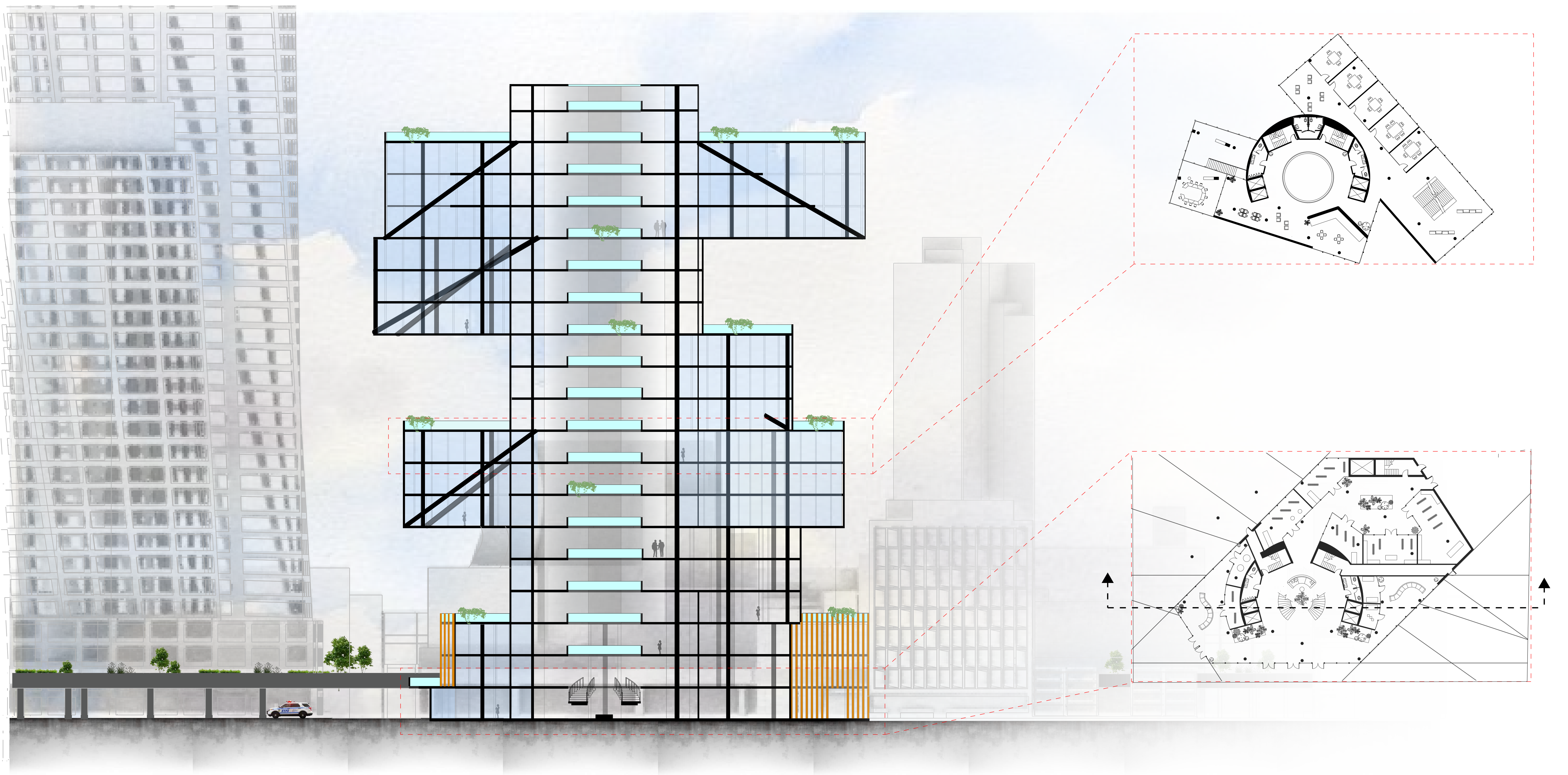


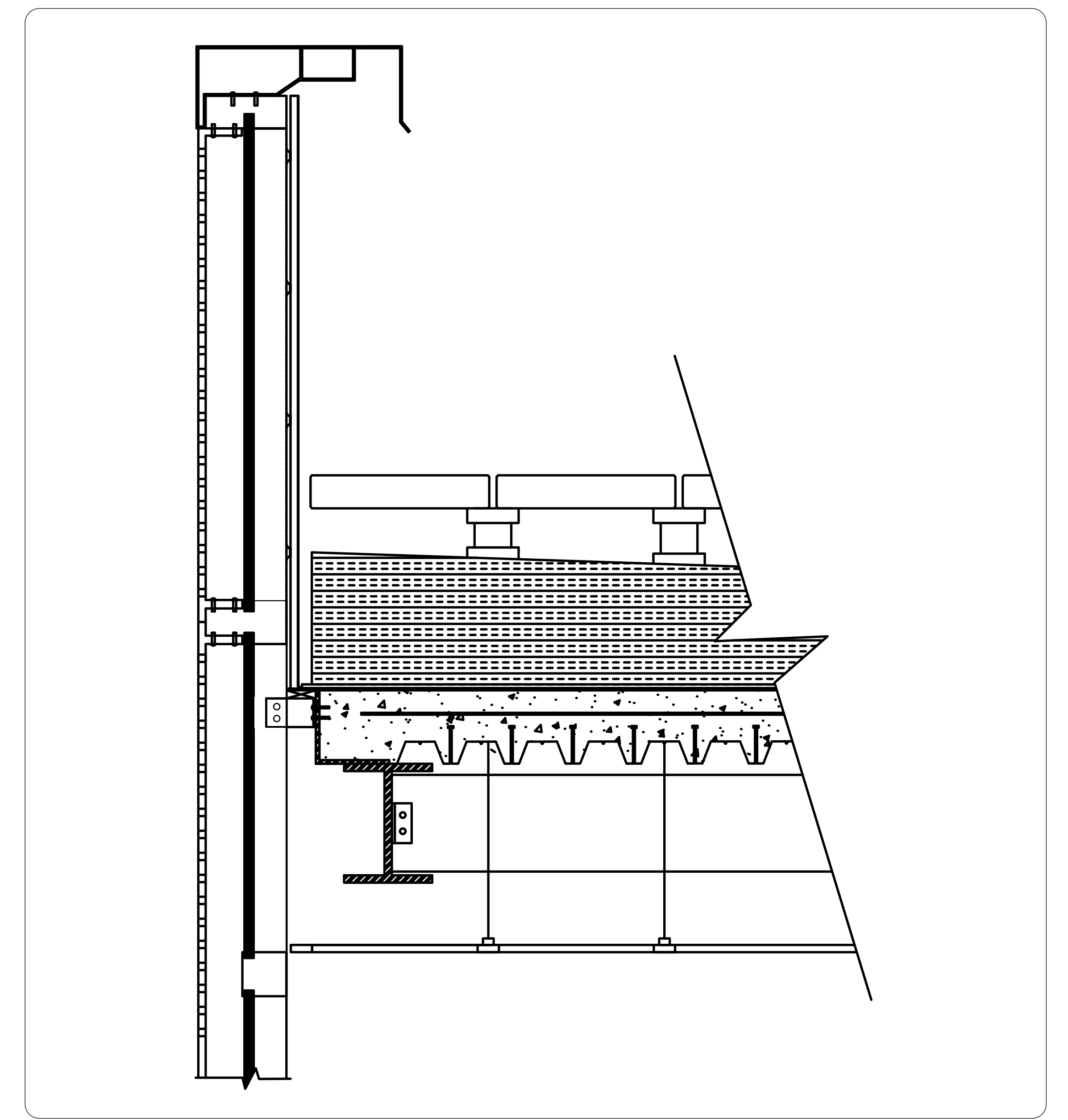
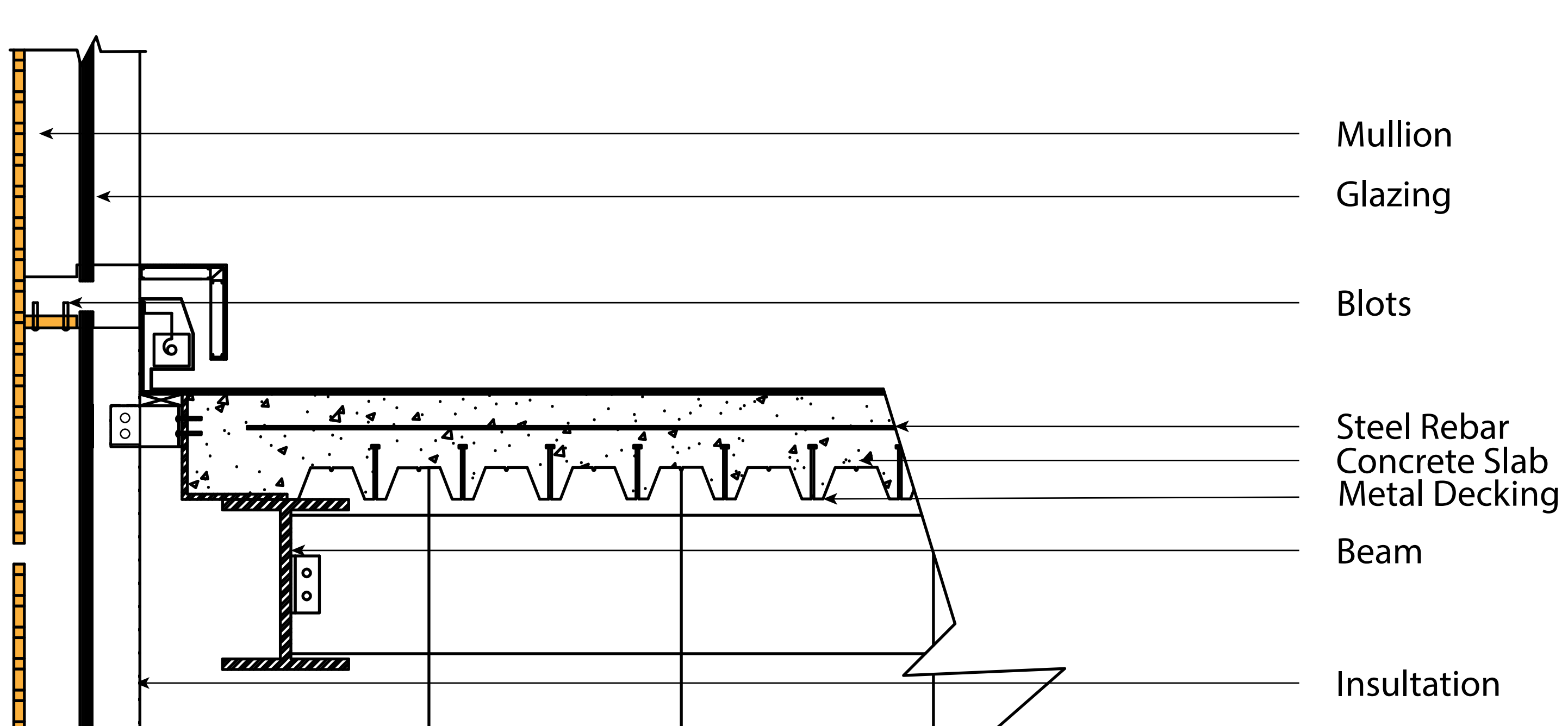
Adaptive Space

Mathlyn Mckie

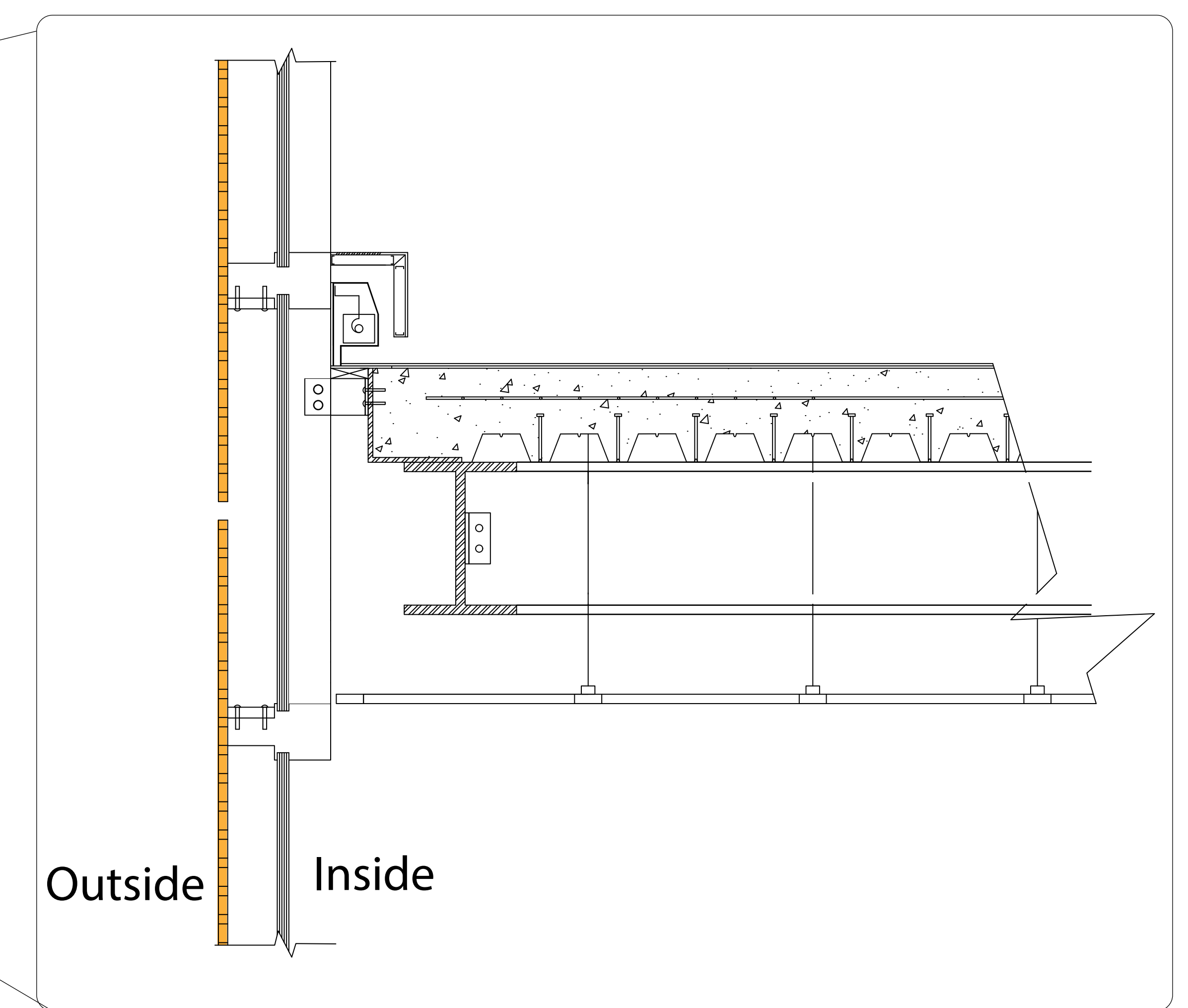
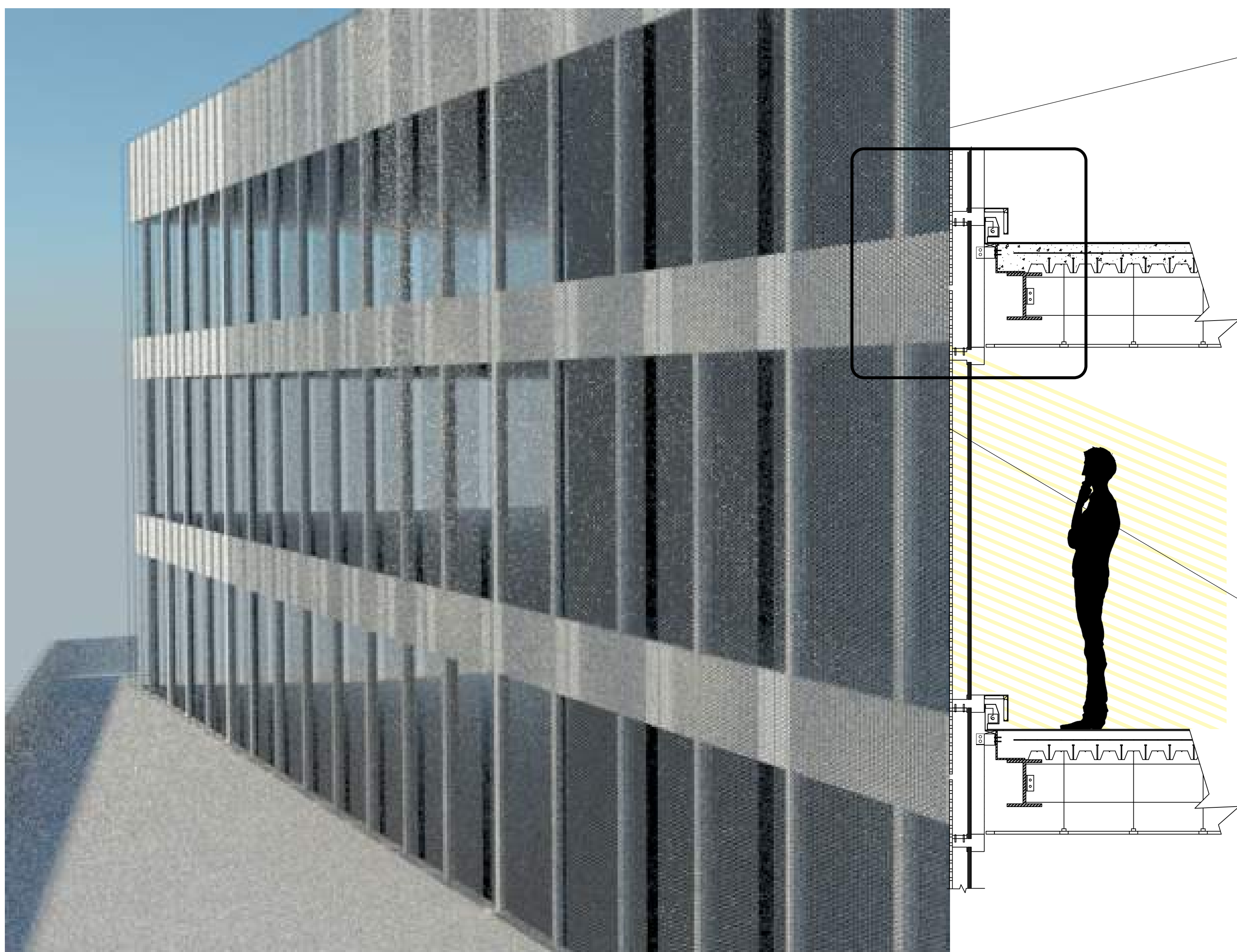
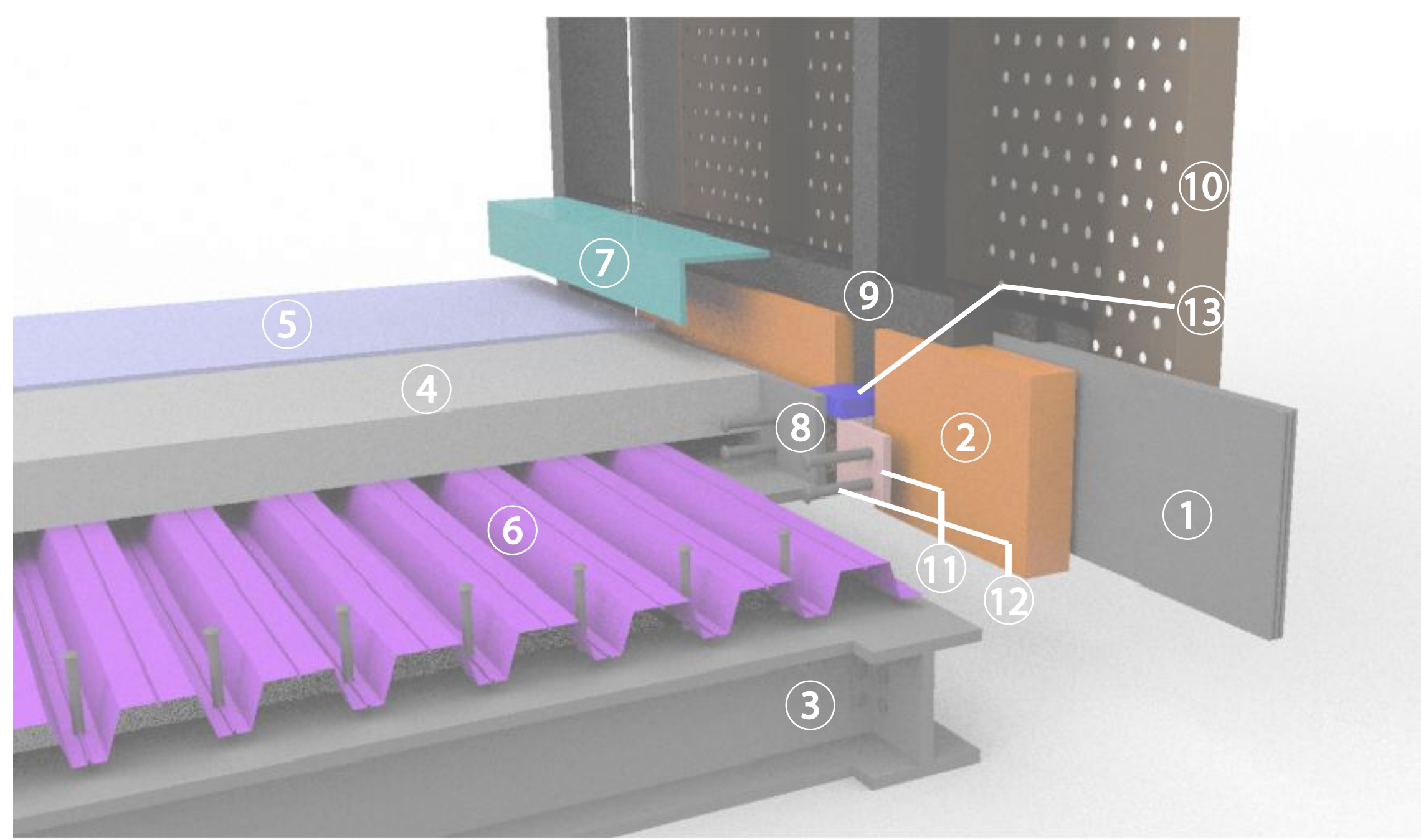
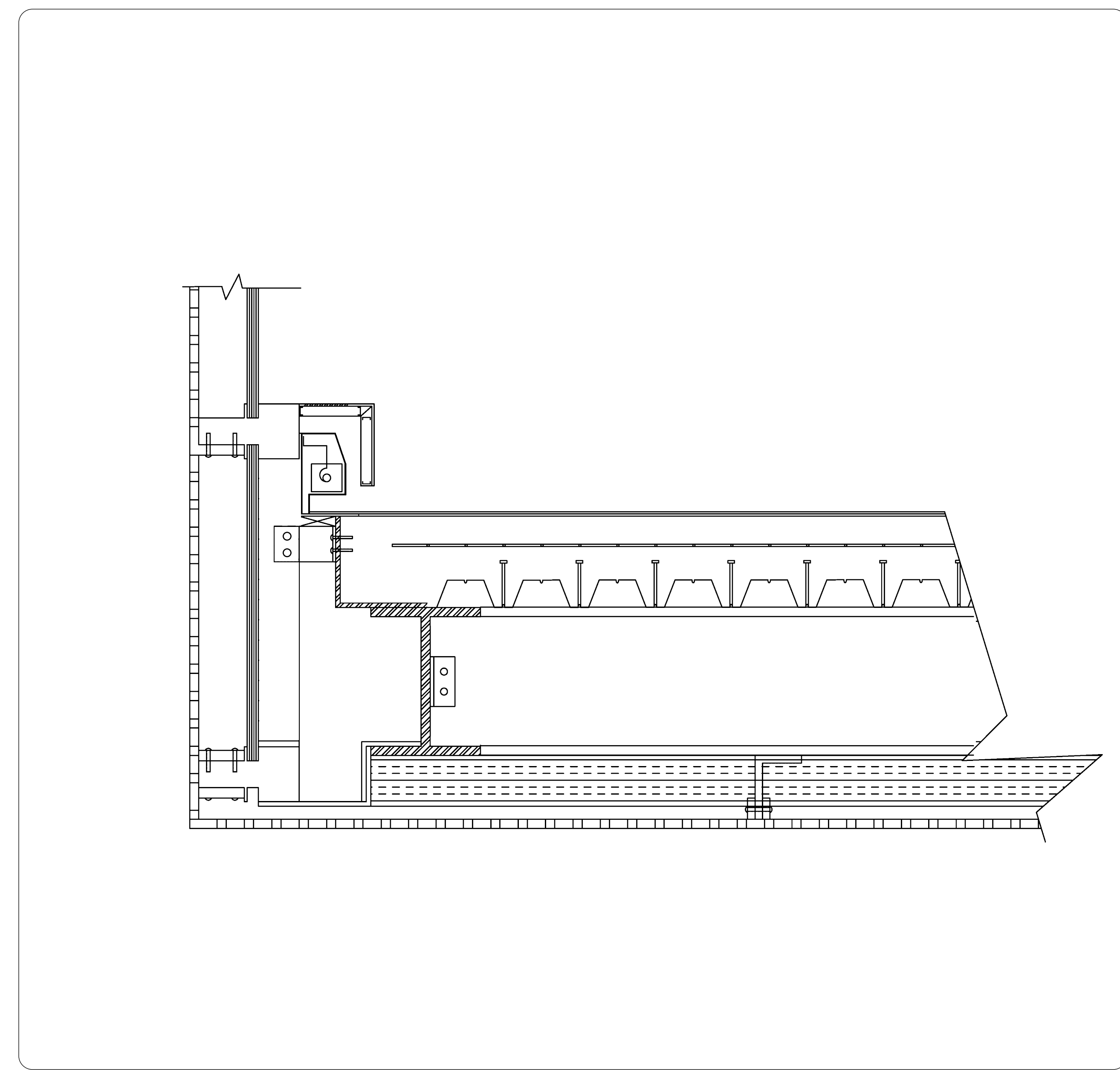
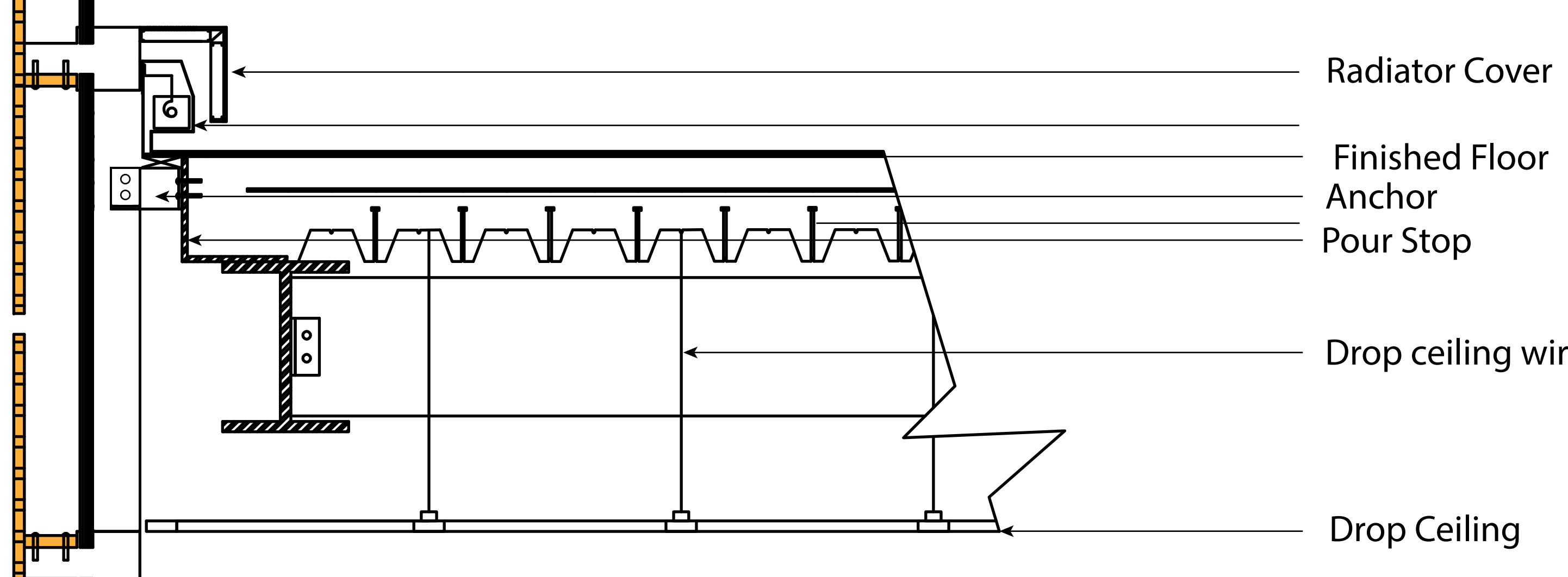
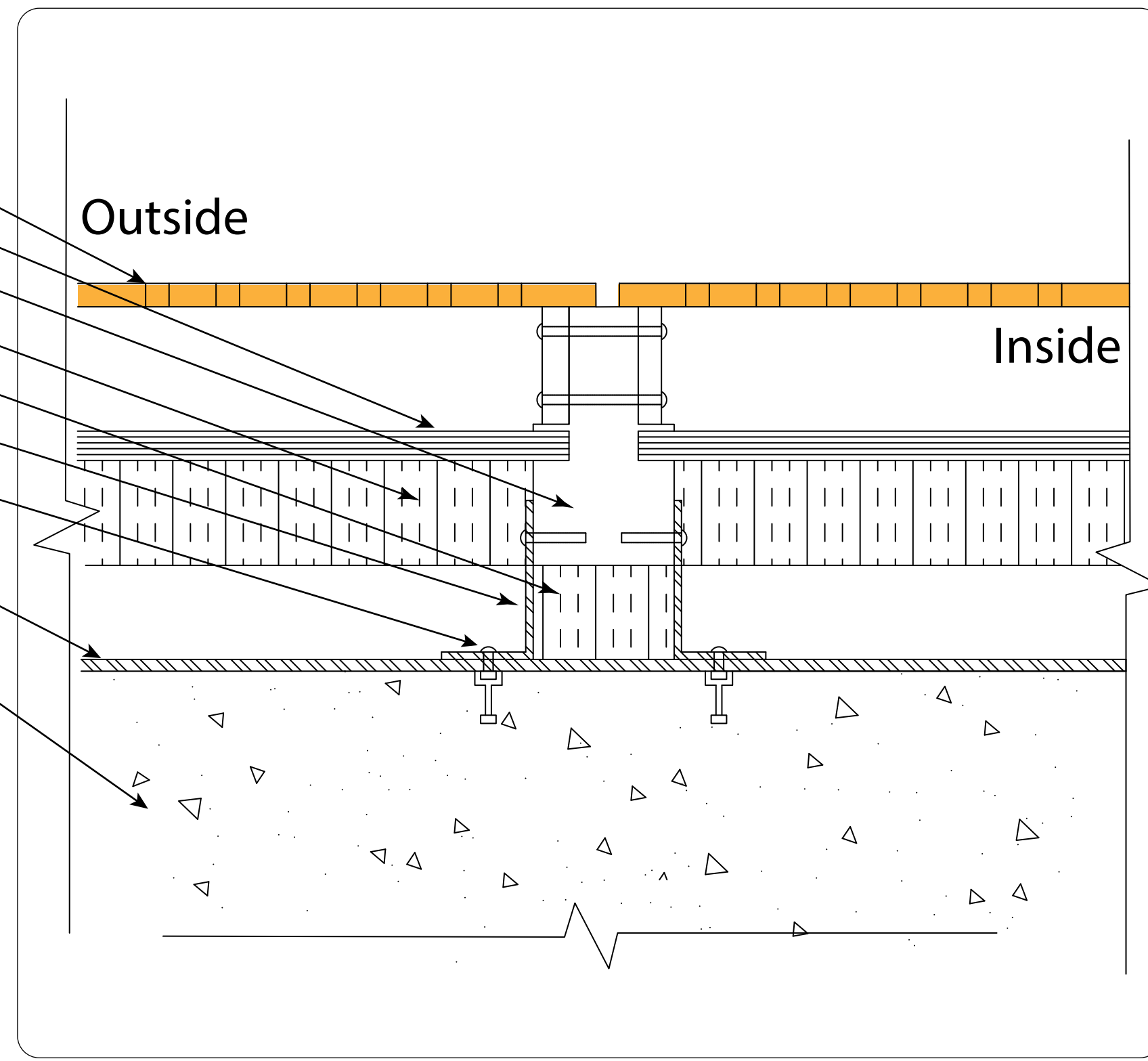
The ideal work place is one that has a combination of isolation and interaction. Spaces that an individual can center their attention and focus on the task at hand but can also be transformed into a collaborative area. A space that has the ability to adapt in such a manner creates a recipe for an effective work place. Individuals are able to learn and thrive from each other but also be independent when needed.





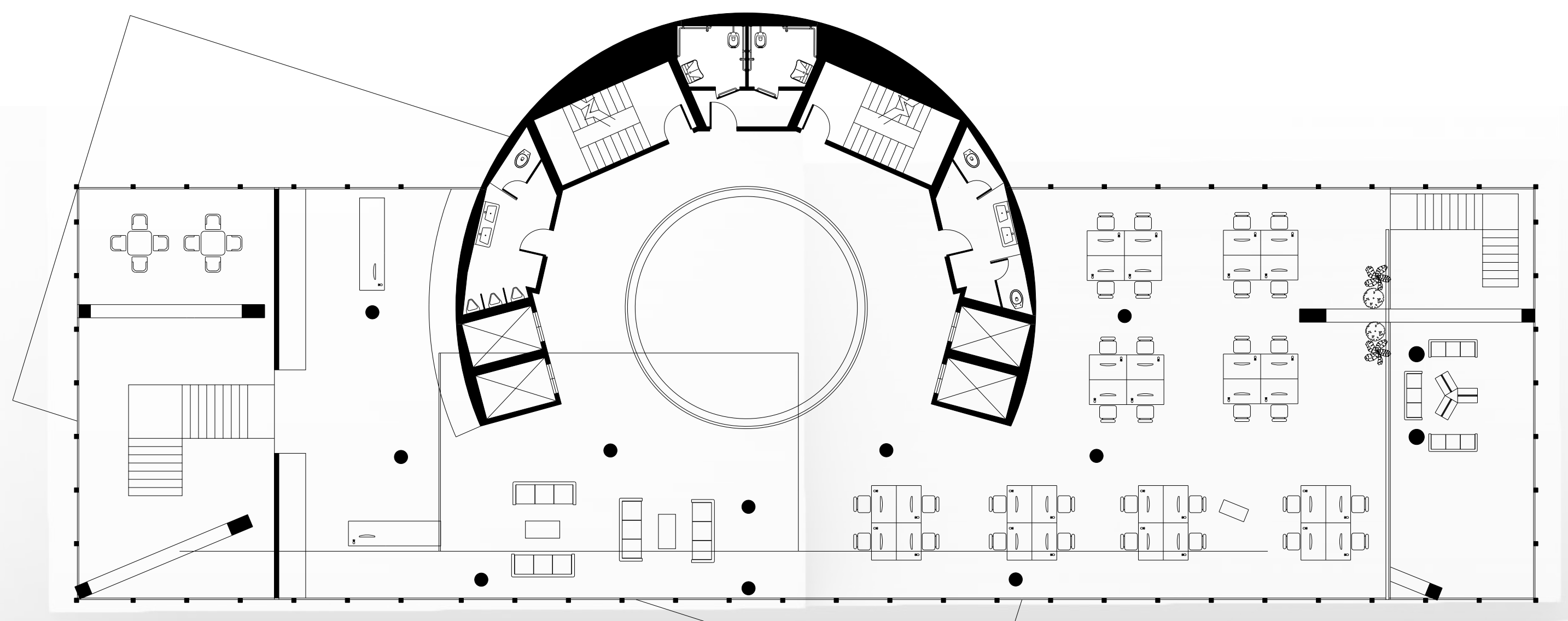
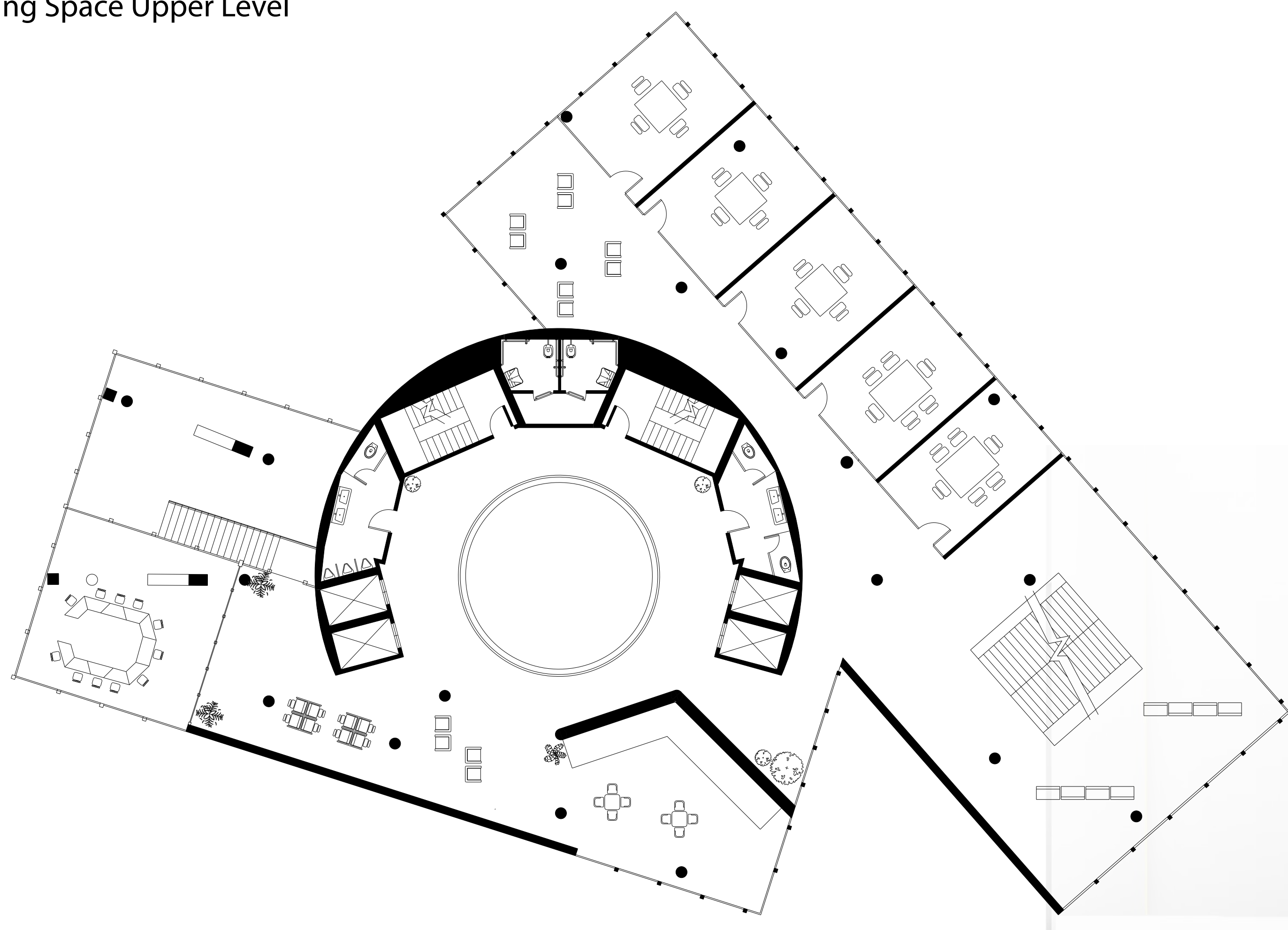


- 1 - Metal Prefoated Panel
- 2 - Glazing
- 3 - Mullion
- 4 - Insulation
- 5 - Fire Stop
- 6 - Anchor
- 7 - Bolts
- 8 - Pour Stop
- 9 - Concrete Slab
- 10 - Spandral Panel
- 11 - Metal Decking
- 12 - Beam
- 13 - Finished Floor
- 14 - Radiator Cover
- 15 - Drop Ceiling
- 16 Radiator
- 17 - Steel Rebar
- 18 - Drop ceiling wire



Co-Working Space Upper Level

Office Space Upper Level



High Line Level

Ground Level

