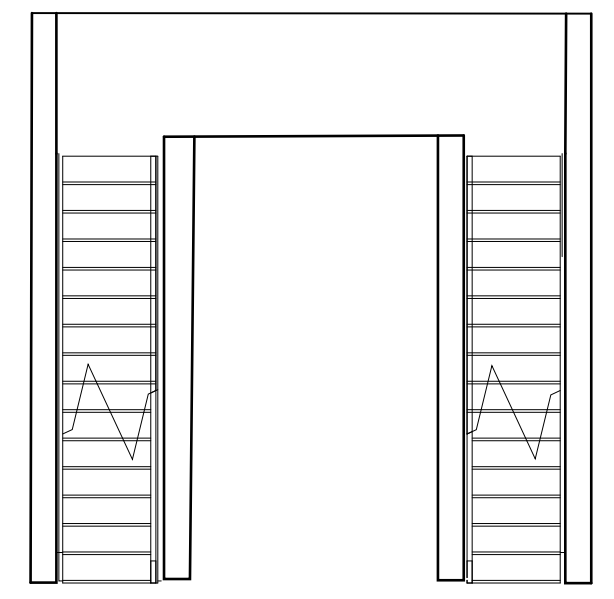
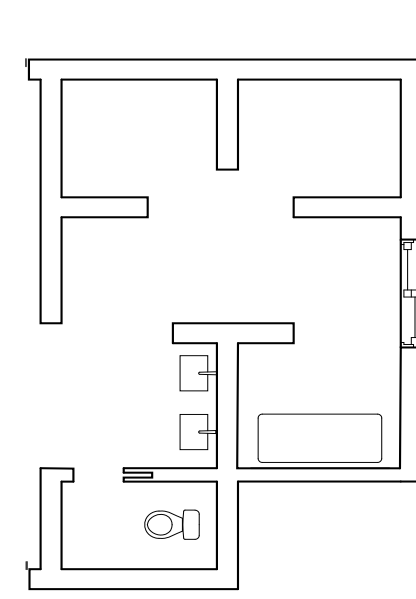
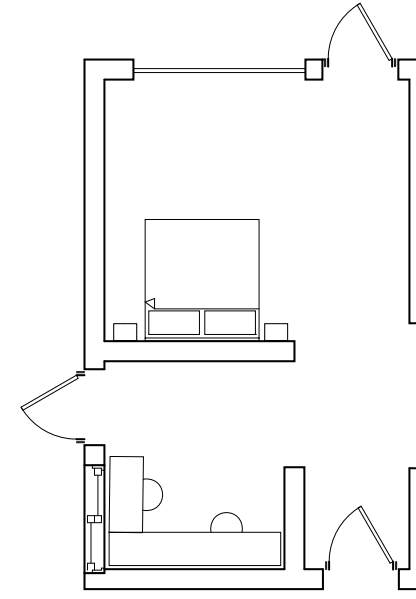
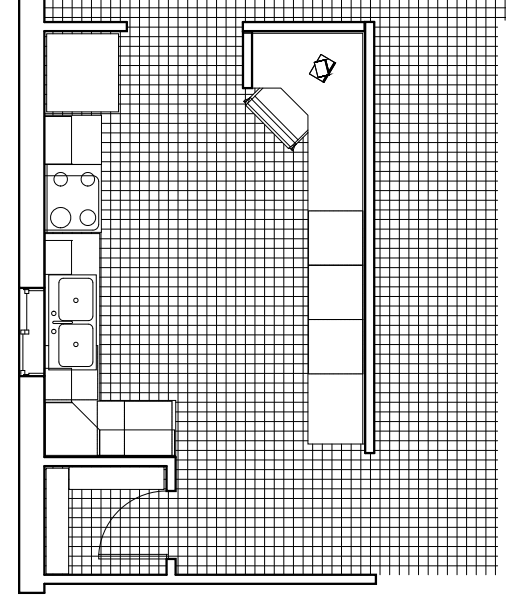
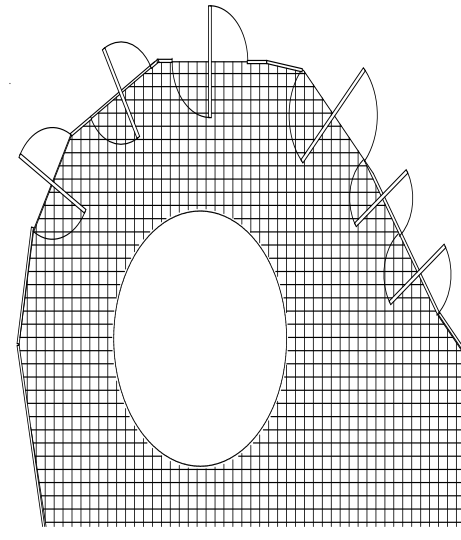
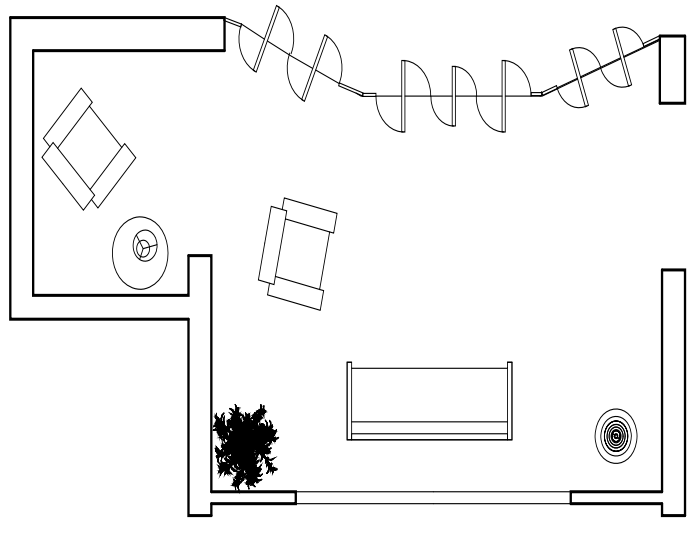


# MODULES ANALYSIS: HOT-HUMID



## Lounge

The Lounge Module faces NE to better experience the exterior space. It is facing the landscape which includes many vegetation/landscape and water front. The landscape and water allows for shade and a cooling effect. The area has openings on all four sides to promote circulation and air flow with a more private area to the side. The furniture helps define the space and the views towards the outside help create transparency between the overlapping indoor and outdoor spaces. It is a space about 11' x 9' with a 9' high ceiling. It is an about 'medium' size space in relation to the other areas to create a more intimate high traffic area.

## Eating

Eating Module is an approximate 12' x 12' circular, glazed space with easy circulation and access to the exterior space. It is orientated in the NE direction to allow East soft and diffused skylight. It is about 8'-6" tall to invite the exterior space in, through the windows, without consuming too much heat.

## Cooking

Cooking Module runs along the NE and SW axis to reduce solar heat gain and utilize the wind circulation to promote a cooling effect. One punched out opening exists along the SE wall to acquire some daylight without overheating the space. Similar to the other modules, the cooking module also has a high ceiling of 8'6" to allow heat of the Hot-Humid climate to rise above head level.

## Sleeping

The "Main" or "Master" sleeping area is orientated facing NE along the NE and SW axis to gather some East daylight without overpowering the space. This will assist in circulation of air. The overall space is about 8' tall, however the ceiling over the sleeping area drops down 12". Punched out opening are placed along SE wall to gather some daylight while still acquiring shade.

## W/C + Bath/Shower + Sink

Contrary to most of the other modules, this module does not necessarily need a high ceiling due to its form and function. It is mostly closed off due to privacy with the exception of a punched opening near the bathtub to allow views to the private exterior landscape. It is approximately 12' x 15' area with different areas throughout the space.

## Stair Hall

With risers at 6" and treads at 11", the Stair Hall Module is an approximate 12' wide x 16' long x 16' high, double volume area with galley style staircase to create hierarchy, easy circulation, and increased wind circulation. Skylights are placed above each landing and natural materials are used to create a light, cooling effect. Because of its centralized location, views are directed outside in the NE direction, up through the skylights as well as towards other interior spaces.

