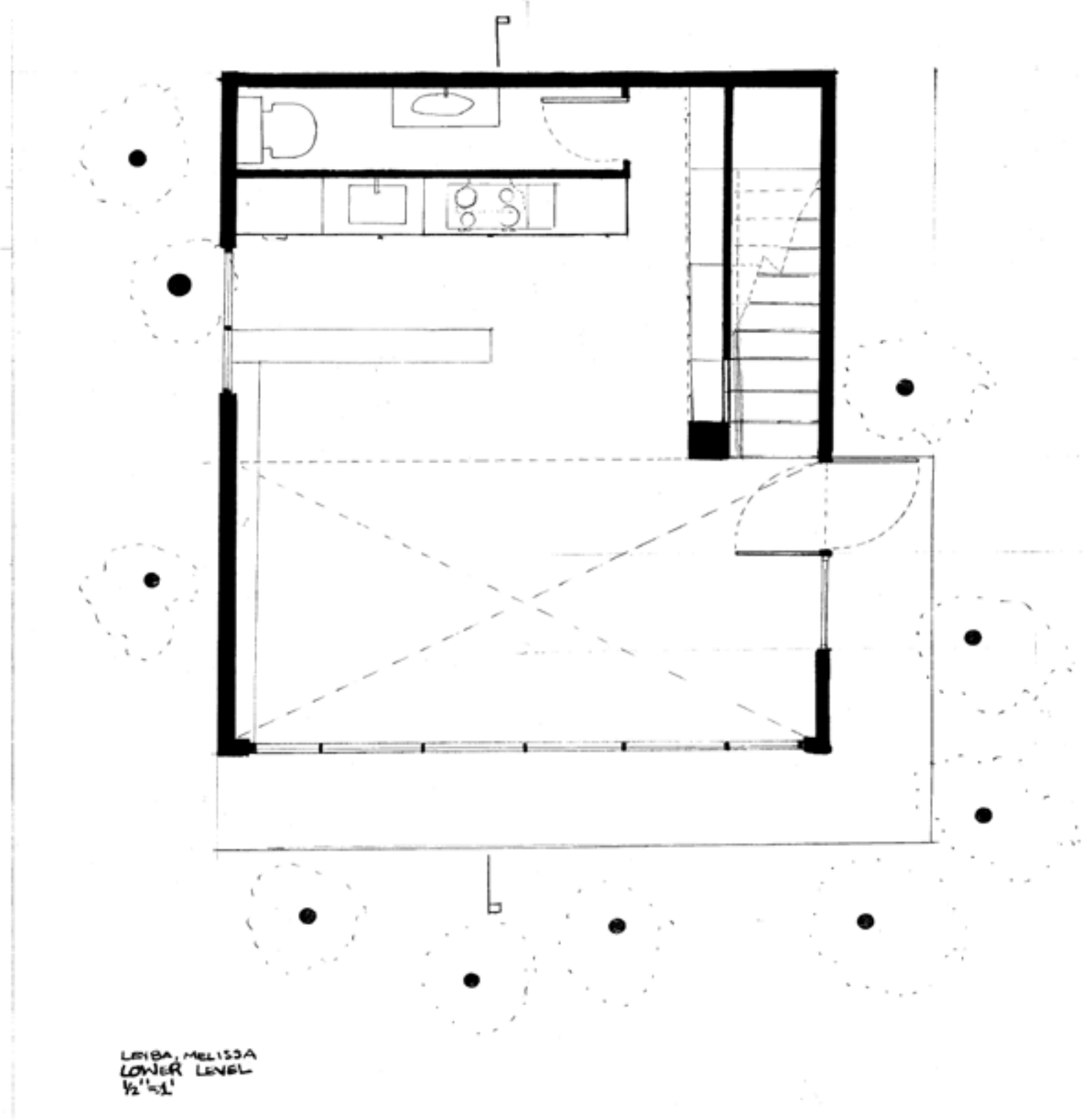


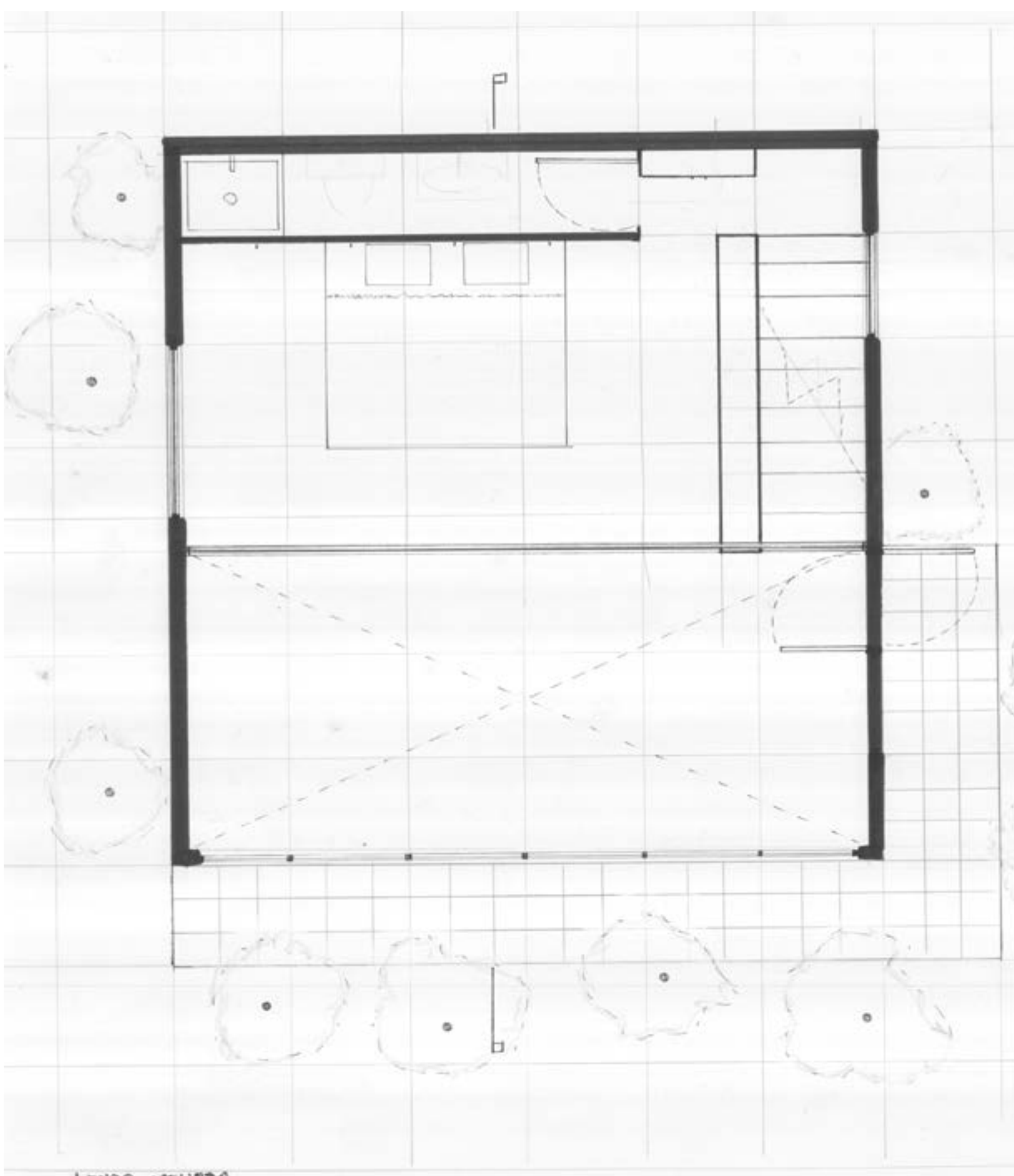
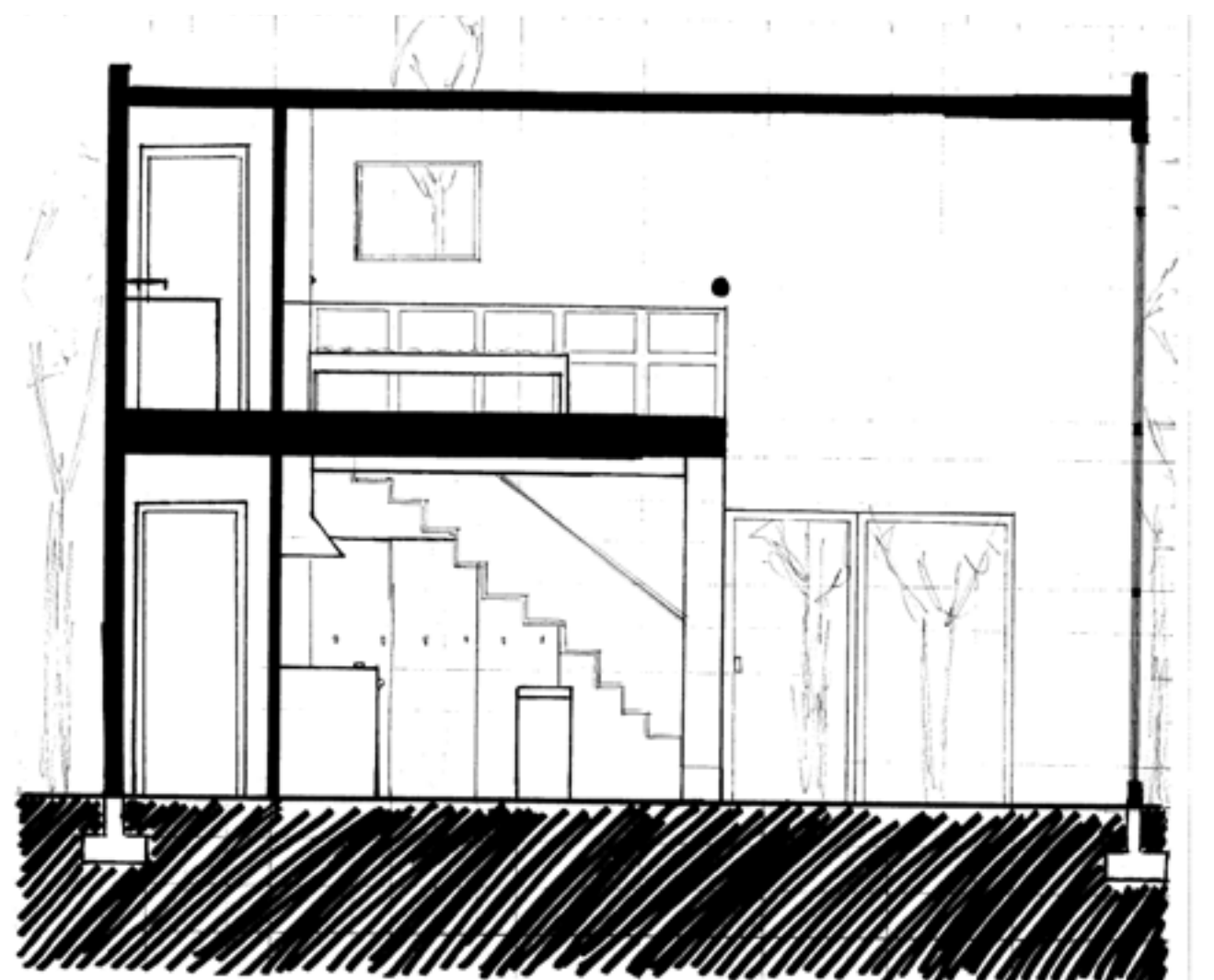
TINY LOFT HOUSE ANALYSIS

Scale, measurements, reasoning, sunlight and other features were used to visualize aspects of the house based on the information given in the image. The number one component that was extremely helpful were the stairs. 36" in width and a rise, run and thread of 6", 12" and 1" was used to proportion other aspects on the house. Other measurements, such as standard countertop height (24"-32"), hand rail height (32") and guardrail height (32"-36") were also used to measure out the rest of the floorplan and fixtures. Based on the table and main entrance, one can determine a scale for the remaining space. Also, once a grid was established, many aspects of the floor plan naturally fell into place. The direction of the natural light coming in also assisted in scaling the image as well as in determining unseen components.

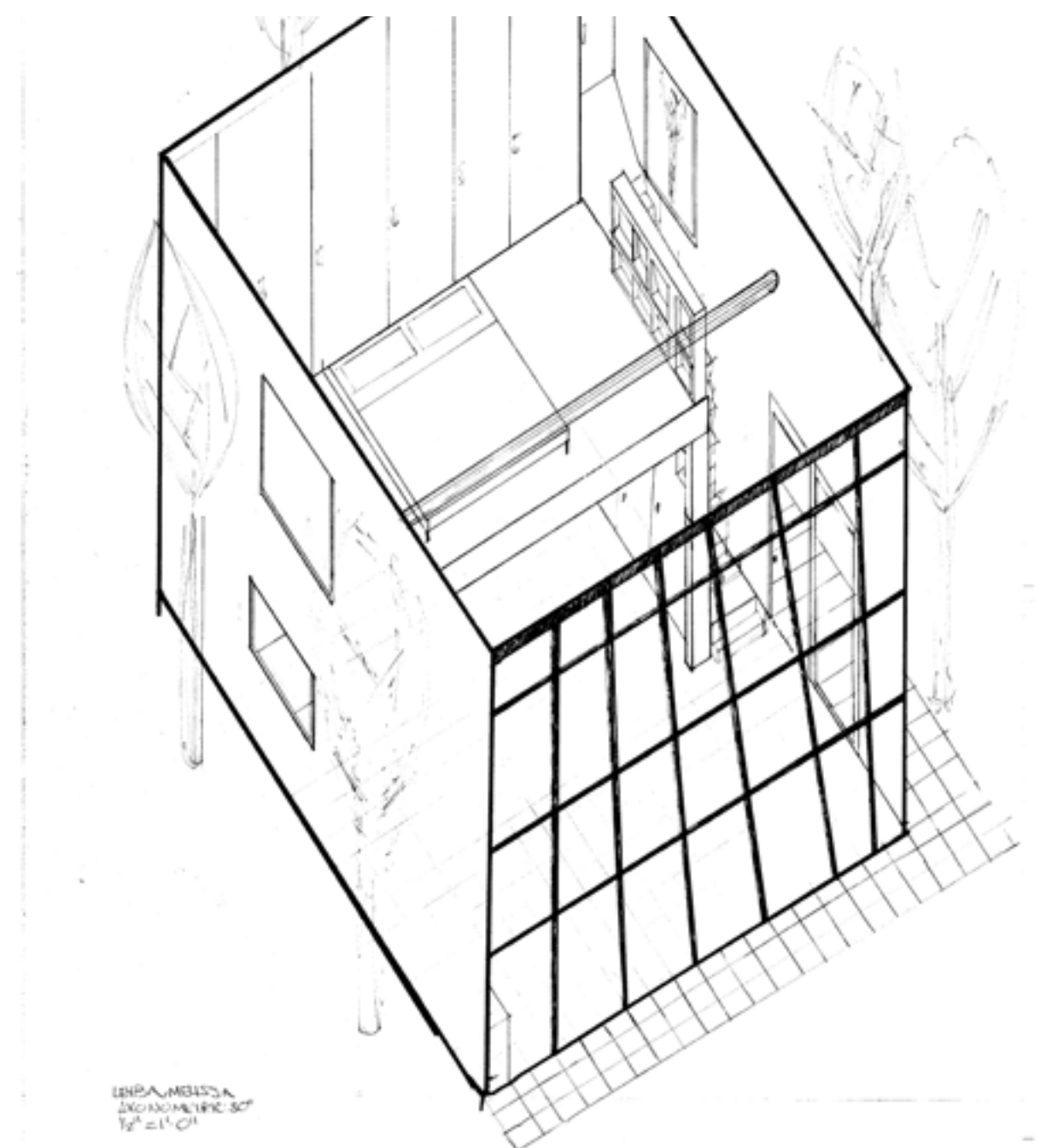


GROUND FLOOR PLAN
UPPER FLOOR PLAN

SECTION



AXONOMETRIC



STUDIES

