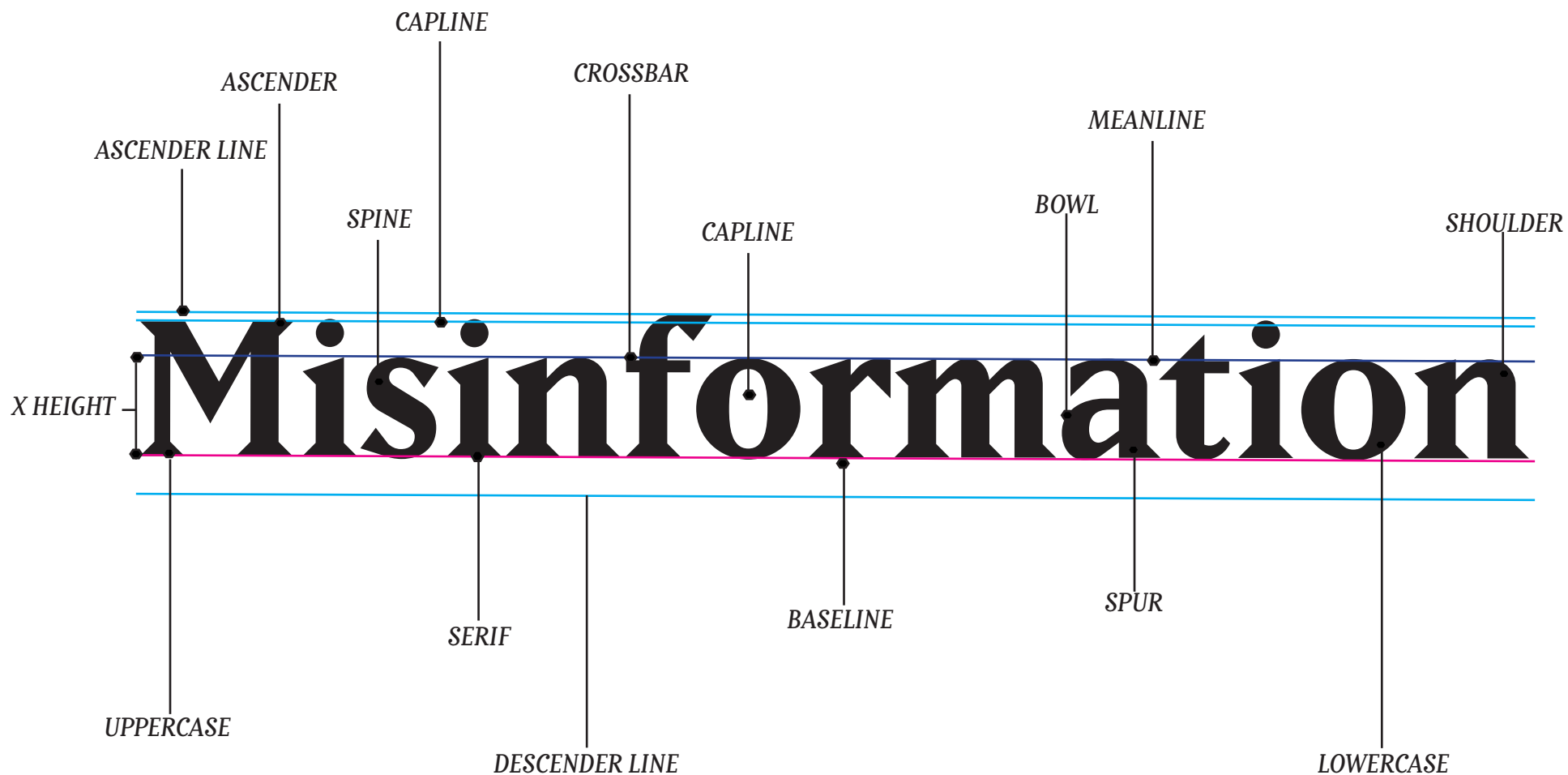


# MISINFORMATION

## Integrity Over Deception

*Melannie Ospina*



**Fake News**

**EXTRA BOLD**

Fake News

REGULAR

Fake News

BOOK FONT

SEMI  
WIDE

Mistrust

SEMI  
NARROW

Mistrust

WIDE

Mistrust

REG ITALIC *Deception*

Deception BOOK  
UNDERLINE

***Deception*** BOLD ITALIC

*Misleadinging*

Tracking fonts has been a fun experience for me. Going into the world of

**-140 TRACKING**

typography, I found the changes characters and spacing to be very interesting and useful for design. Adjusting isn't only about text and In

*ading*

between

**330 TRACKING**

tracking

aesthetics; but it's also about using creating a sense of rhythm and flow.

other words I feel I am giving a voice to the

**NO TRACKING**

better captivate the

font to readers. I adjustments can

love how such small make a big difference in how we view

*Misleadinging*

and engage with written content.

*Misleadinging*

**LEADING (5PT)**

Misinformation is the spread of false information, either intentionally or unintentionally through various communication platforms. This is detrimental to our society because it spreads false or misleading information (distorts facts and misrepresents reality), leading to confusion, mistrust, and potentially harmful actions. It can exacerbate existing social issues by dividing communities, creating a lack of trust in our institutions, and hindering informed decision-making. It can also mislead public opinion in turn impacting societal behavior. One of the solutions is to amplify the collaborative effort between tech companies and society to hold platforms and outlets accountable for spreading false information.

**LEADING (10PT)**

Misinformation is the spread of false information; either intentionally or unintentionally through various communication platforms. This is detrimental to our society because it spreads false or misleading information (distorts facts and misrepresents reality), leading to confusion, mistrust, and potentially harmful actions. It can exacerbate existing social issues by dividing communities, creating a lack of trust in our institutions, and hindering informed decision-making. It can also mislead public opinion in turn impacting societal behavior. One of the solutions is to amplify the collaborative effort between tech companies and society to hold platforms and outlets accountable for spreading false information.

**LEADING (17PT)**

Misinformation is the spread of false information; either intentionally or unintentionally through various communication platforms. This is detrimental to our society because it spreads false or misleading information (distorts facts and misrepresents reality), leading to confusion, mistrust, and potentially harmful actions. It can exacerbate existing social issues by dividing communities, creating a lack of trust in our institutions, and hindering informed decision-making. It can also mislead public opinion in turn impacting societal behavior. One of the solutions is to amplify the collaborative effort between tech companies and society to hold platforms and outlets accountable for spreading false information.

**NO LEADING- SOLID**

Misinformation is the spread of false information; either intentionally or unintentionally through various communication platforms. This is detrimental to our society because it spreads false or misleading information (distorts facts and misrepresents reality), leading to confusion, mistrust, and potentially harmful actions. It can exacerbate existing social issues by dividing communities, creating a lack of trust in our institutions, and hindering informed decision-making. It can also mislead public opinion in turn impacting societal behavior. One of the solutions is to amplify the collaborative effort between tech companies and society to hold platforms and outlets accountable for spreading false information.

As I manipulate the line spacing, the text transforms shifting from cramped and claustrophobic to more airy orexpansive. This exercise highlights how typography, influences readability and visual appeal. Theres is a need for balance; too tight, the text feels suffocating, too loose, and theres no cohesion. Adjusting leading rimpacts the overall composition.

***FLUSH LEFT***

---

Misinformation is the spread of false information; either intentionally or unintentionally through various communication platforms. This is detrimental to our society because it spreads false or misleading information (distorts facts and misrepresents reality), leading to confusion, mistrust, and potentially harmful actions. It can exacerbate existing social issues by dividing communities, creating a lack of trust in our institutions, and hindering informed decision-making. It can also mislead public opinion in turn impacting societal behavior. One of the solutions is to amplify the collaborative effort between tech companies and society to hold platforms and outlets accountable for spreading false information.

Misinformation is the spread of false information; either intentionally or unintentionally through various communication platforms. This is detrimental to our society because it spreads false or misleading information (distorts facts and misrepresents reality), leading to confusion, mistrust, and potentially harmful actions. It can exacerbate existing social issues by dividing communities, creating a lack of trust in our institutions, and hindering informed decision-making. It can also mislead public opinion in turn impacting societal behavior. One of the solutions is to amplify the collaborative effort between tech companies and society to hold platforms and outlets accountable for spreading false information.

***CENTERED***

---

***FLUSH RIGHT***

---

Misinformation is the spread of false information; either intentionally or unintentionally through various communication platforms. This is detrimental to our society because it spreads false or misleading information (distorts facts and misrepresents reality), leading to confusion, mistrust, and potentially harmful actions. It can exacerbate existing social issues by dividing communities, creating a lack of trust in our institutions, and hindering informed decision-making. It can also mislead public opinion in turn impacting societal behavior. One of the solutions is to amplify the collaborative effort between tech companies and society to hold platforms and outlets accountable for spreading false information.



## **M i s i n f o r m a t i o n** ***Integrity Over Deception***

Misinformation is the spread of false information; either intentionally or unintentionally through various communication platforms. This is detrimental to our society because it spreads false or misleading information (distorts facts and misrepresents reality), leading to confusion, mistrust, and potentially harmful actions. It can exacerbate existing social issues by dividing communities, creating a lack of trust in our institutions, and hindering informed decision-making. It can also mislead public opinion in turn impacting societal behavior. One of the solutions is to amplify the collaborative effort between tech companies and society to hold platforms and outlets accountable for spreading false information.

---

### ***Justify All Lines***

Alignment can significantly change the appearance and readability of text .When the text is aligned along the margin, it creates a clean and organized look. If it's centered it shows a sense of balance and looks more elegant, works well with titles or headings.

## **Misinformation** ***Integrity Over Deception***

Misinformation is the spread of false information; either intentionally or unintentionally through various communication platforms. This is detrimental to our society because it spreads false or misleading information (distorts facts and misrepresents reality), leading to confusion, mistrust, and potentially harmful actions. It can exacerbate existing social issues by dividing communities, creating a lack of trust in our institutions, and hindering informed decision-making. It can also mislead public opinion in turn impacting societal behavior. One of the solutions is to amplify the collaborative effort between tech companies and society to hold platforms and outlets accountable for spreading false information.

---

### ***Justify All Lines: Center***

# MISINFORMATION

## Integrity over Deception

NEWS

FAKE



# MISINFORMATION

## *Integrity Over Deception*

Misinformation is the spread of false information; either intentionally or unintentionally through various communication platforms. This is detrimental to our society because it spreads false or misleading information (distorts facts and misrepresents reality), leading to confusion, mistrust, and potentially harmful actions. It can exacerbate existing social issues by dividing communities, creating a lack of trust in our institutions, and hindering informed decision-making. It can also mislead public opinion in turn impacting societal behavior. One of the solutions is to amplify the collaborative effort between tech companies and society to hold platforms and outlets accountable for spreading false information.

# SOURCES

## FONT STYLES

### Matrix II OT:

Book

Book Italic

Reg

Reg Italic

Bold

Bold Italic

Extra Bold

### Matrix II Inline OT

### Minion Pro Regular

### Matrix II Ext OT:

Narrow

Semi Narrow

Semi Wide

Wide

## IMAGE-

[https://miro.medium.com/v2/resize:fit:1200/1\\*reh80EJP-B9UPNVSibrsFCQ.jpeg](https://miro.medium.com/v2/resize:fit:1200/1*reh80EJP-B9UPNVSibrsFCQ.jpeg)

