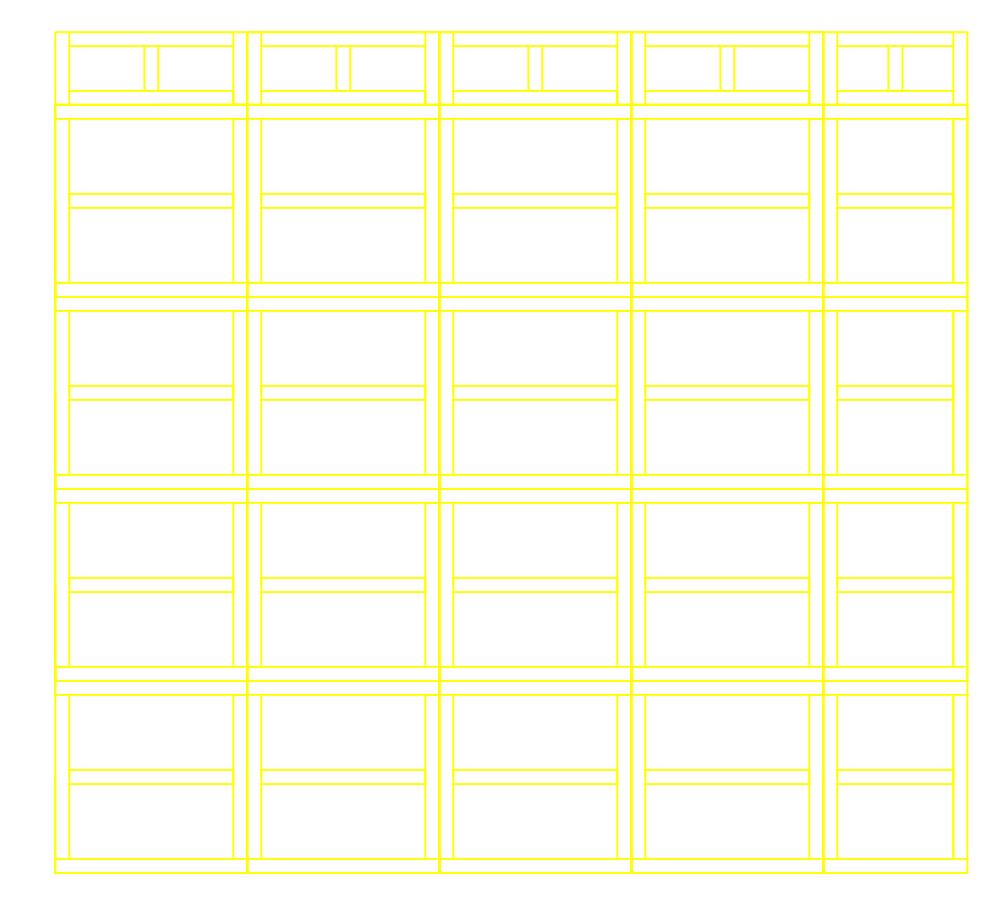
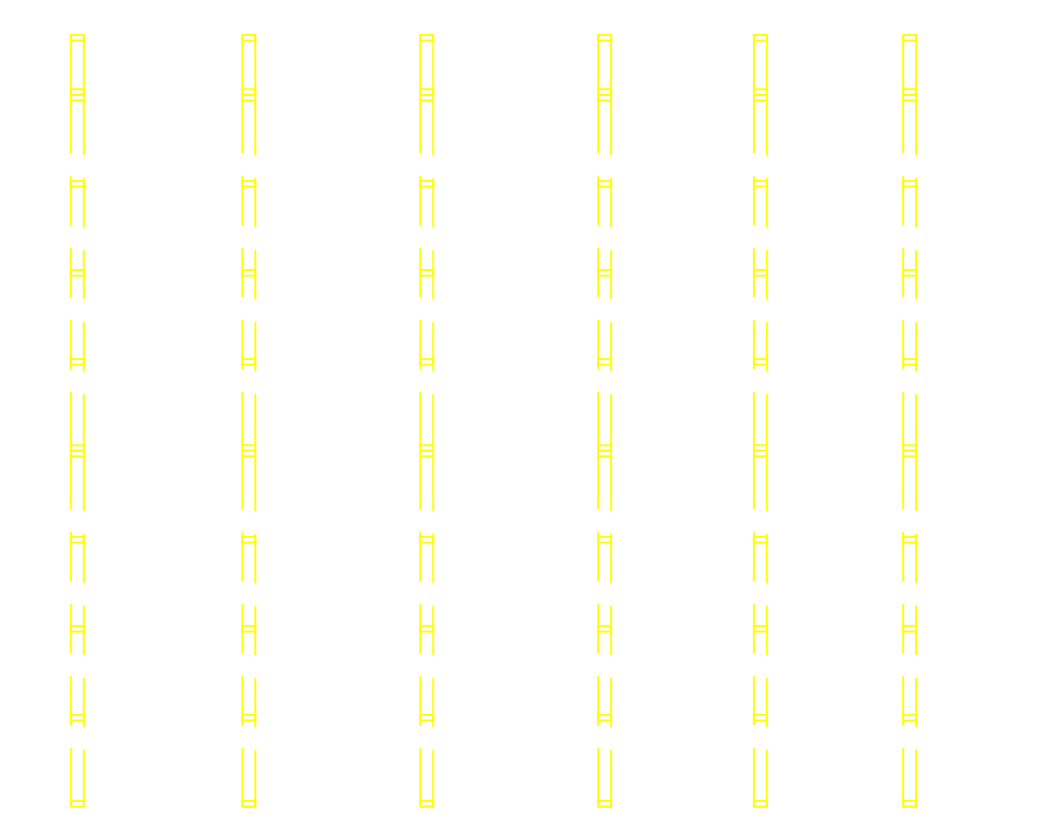


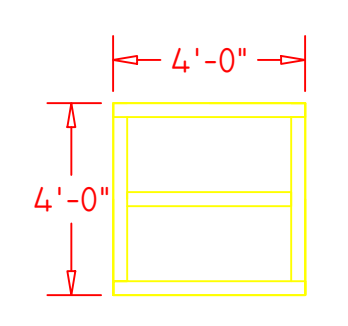
TOP VIEW BREAKDOWN



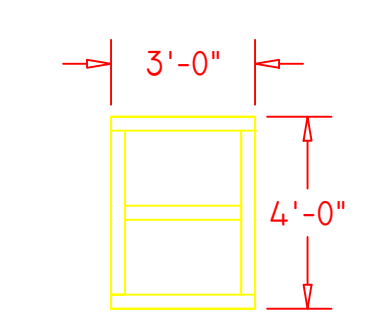
TOP VIEW OF ASSAMBLING



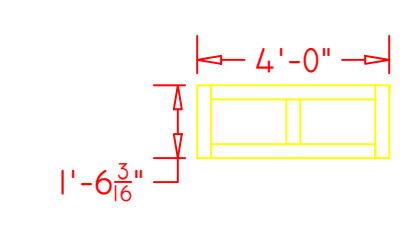
TOP VIEW STUDWALLS



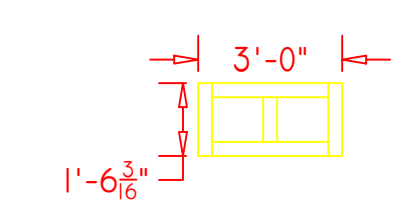
TRIS A



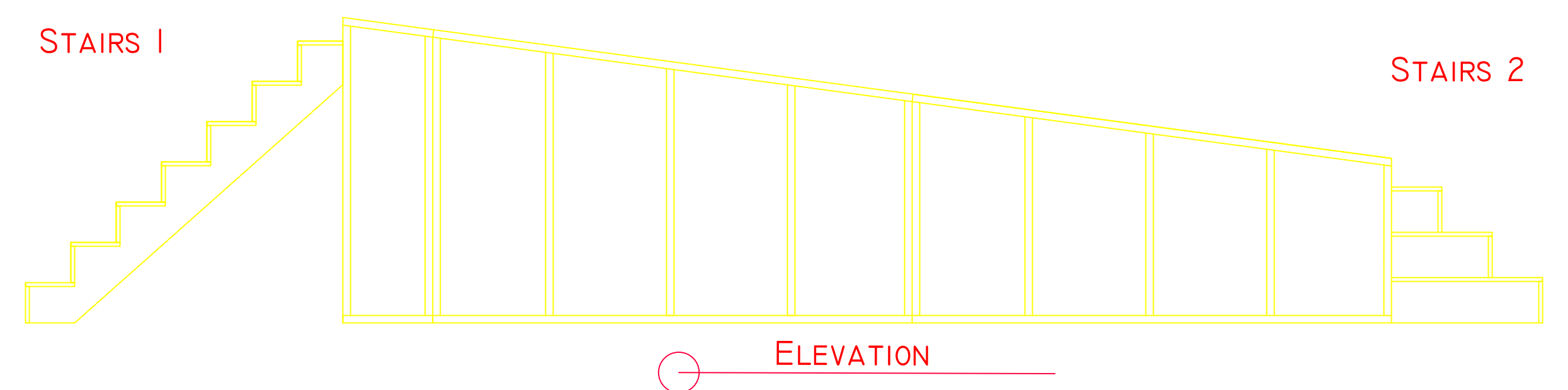
TRIS B



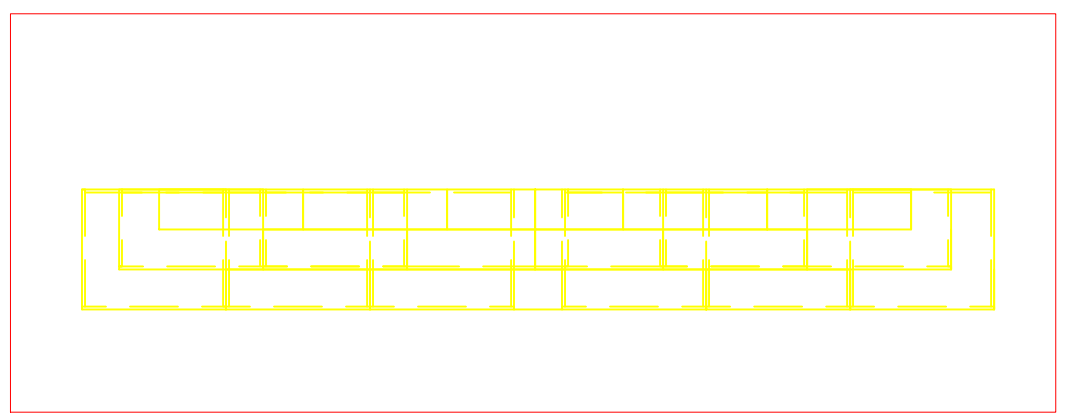
TRIS C



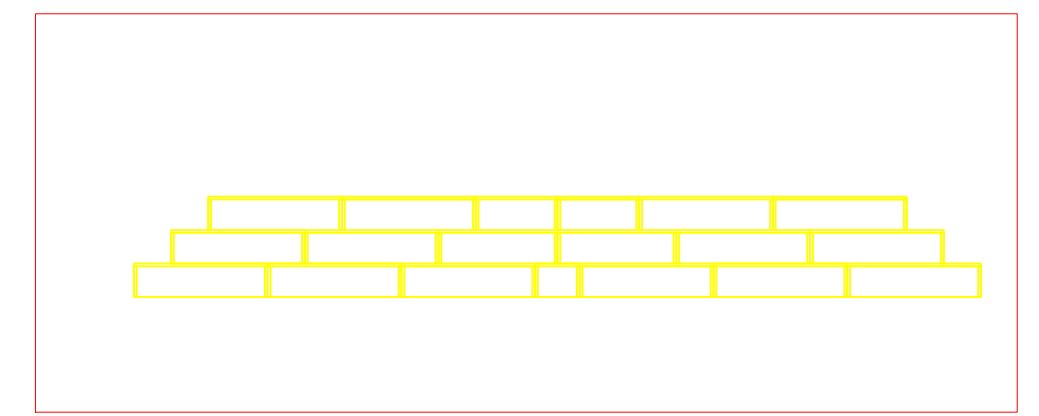
TRIS D



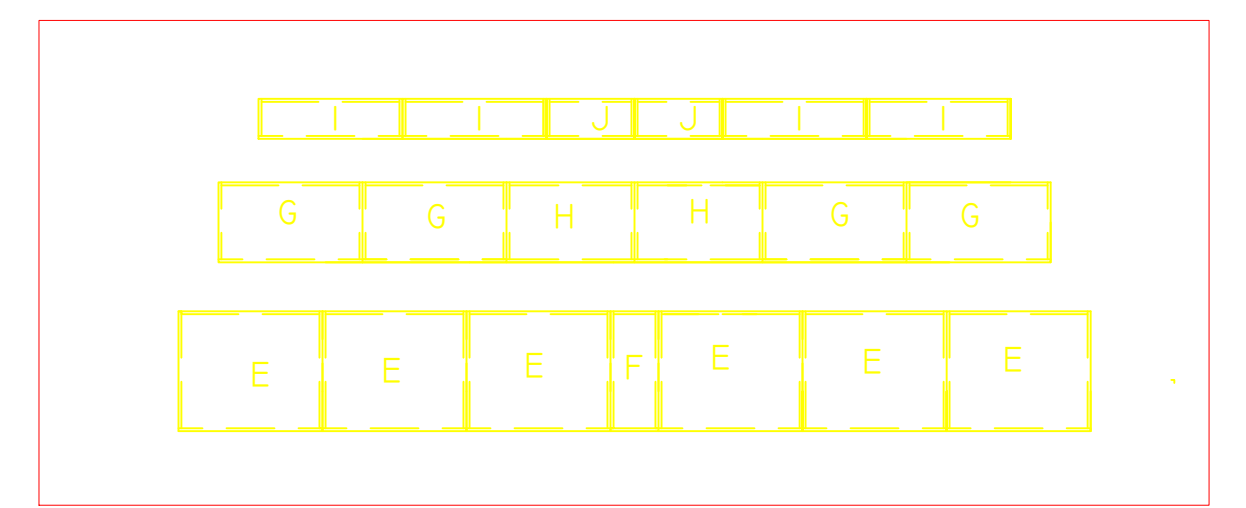
ELEVATION



TOP VIEW BREAKDOWN

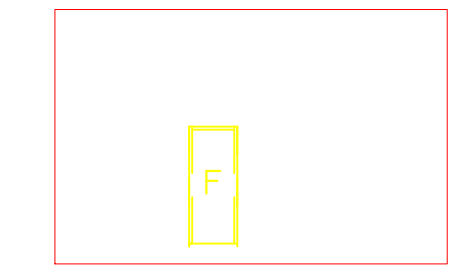
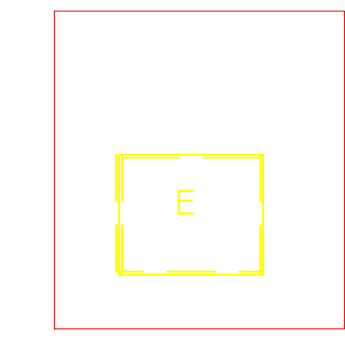
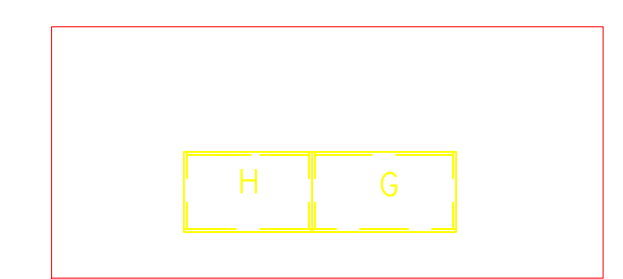
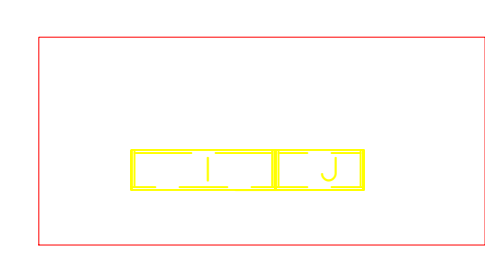


TOP VIEW OF ASSAMBLING



DETAILED STAIRS PLATFORM

- PLATFORM TO BE COVERED WITH PAINTED MUSLIN
- 1/4" LUAUN LIDS TO BE PAINTED GLOSSY BLACK
- MUSLIN TO BE REMOVED AFTER CONCERT FOR FOLLOWING DANCE SHOW
- 4 "A LIDS" AND 1 "B LID" WILL BE MITERED 8 DEGREES ON THE DOWNSTAGE SIDE
- 4 "C LIDS" AND 1 "D LID" WILL BE MITERED 8 DEGREES ON THE UPSTAGE SIDE



PROJECT # 2

Prepared By: Andrew Pawluk & Massiel Gomez

1:1/4