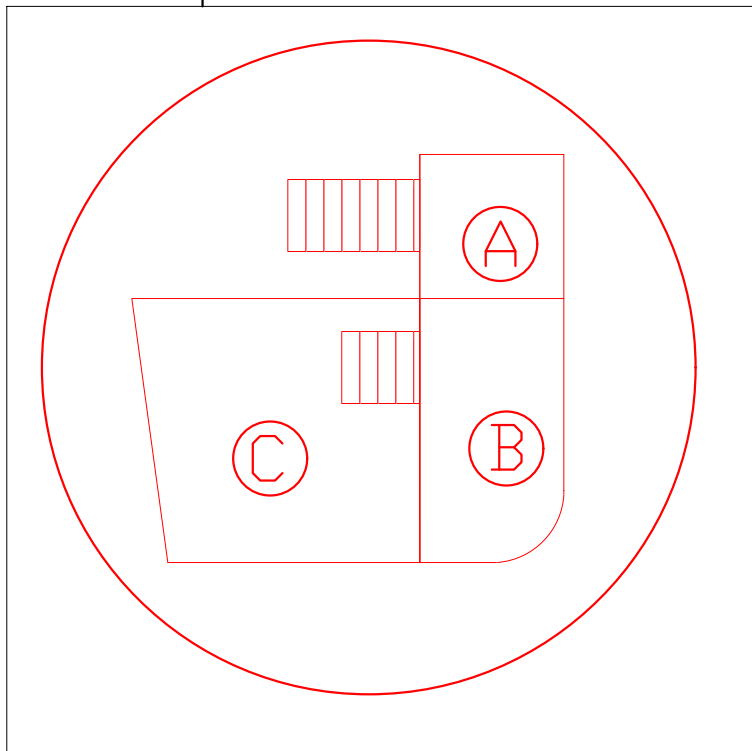
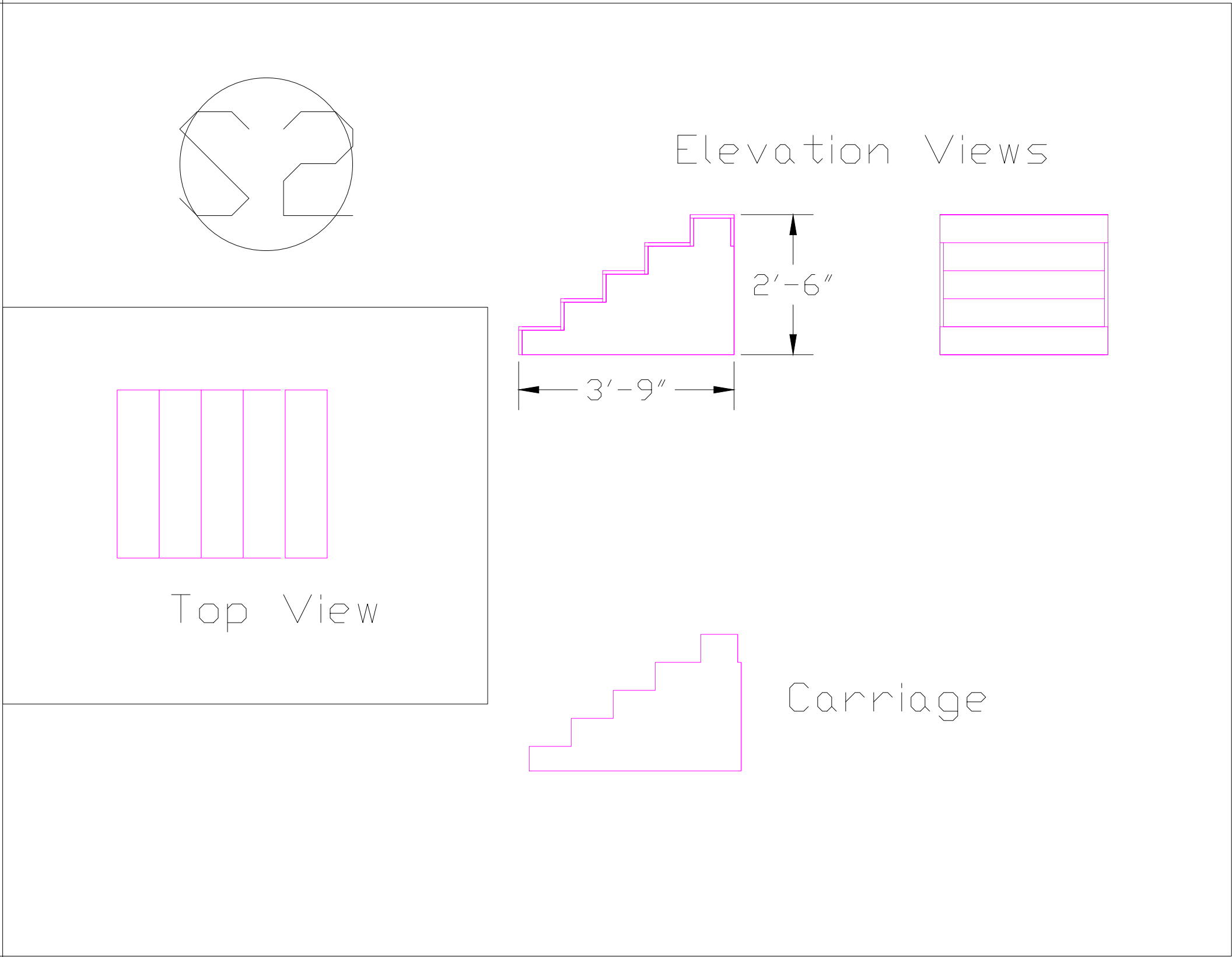
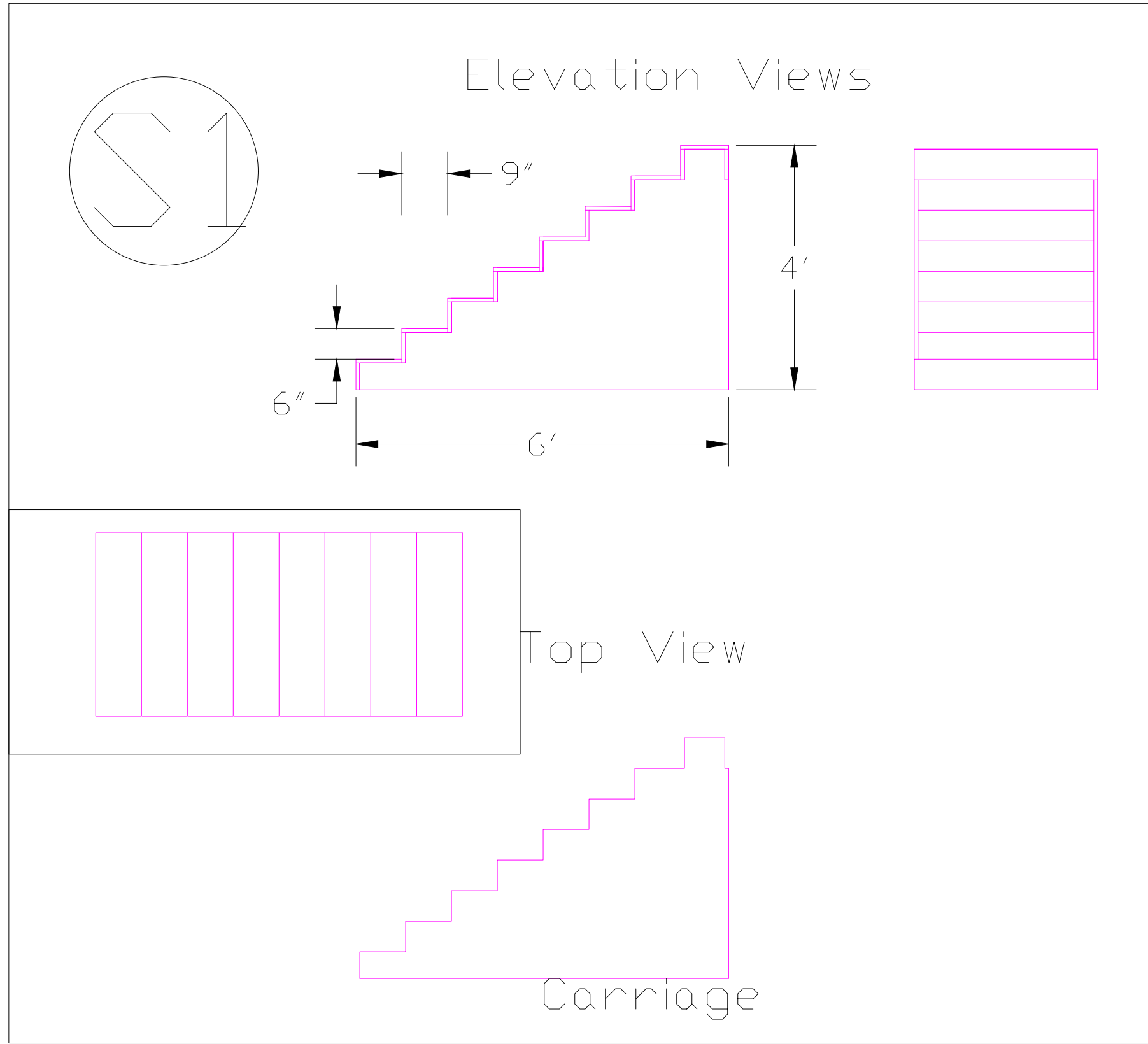


What you have turned in is basically fine, but you are missing cut lists, lumber order, and many necessary notes on these pages.  
This would be a great project if it were finished.

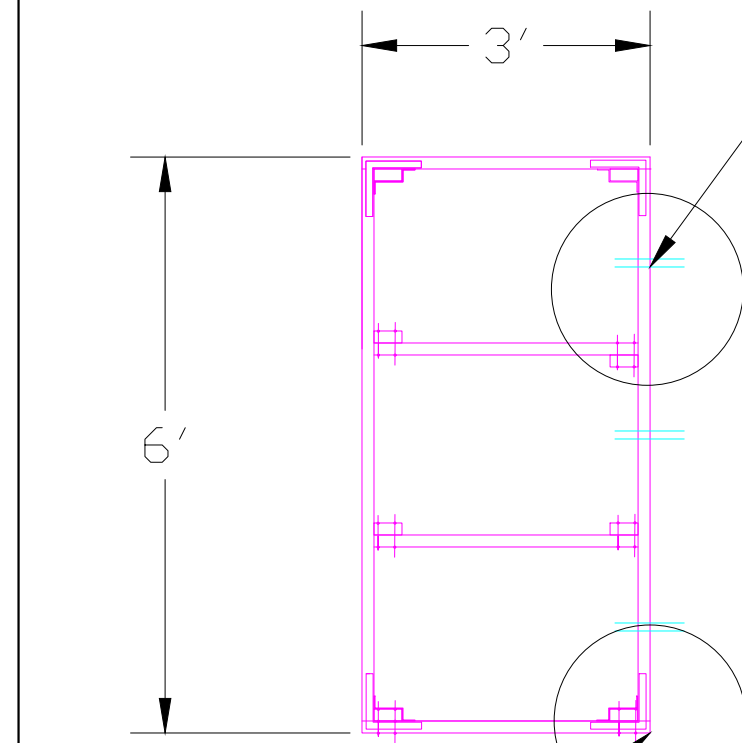
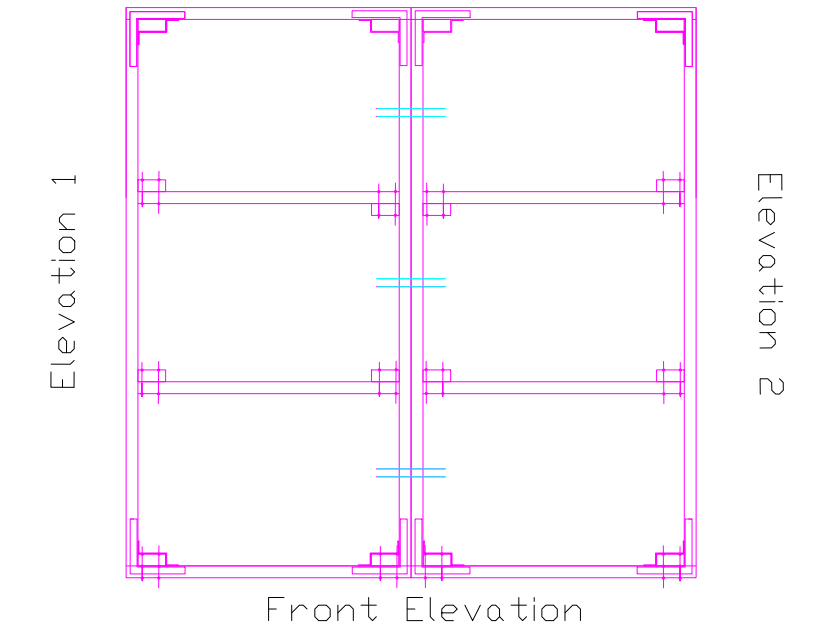
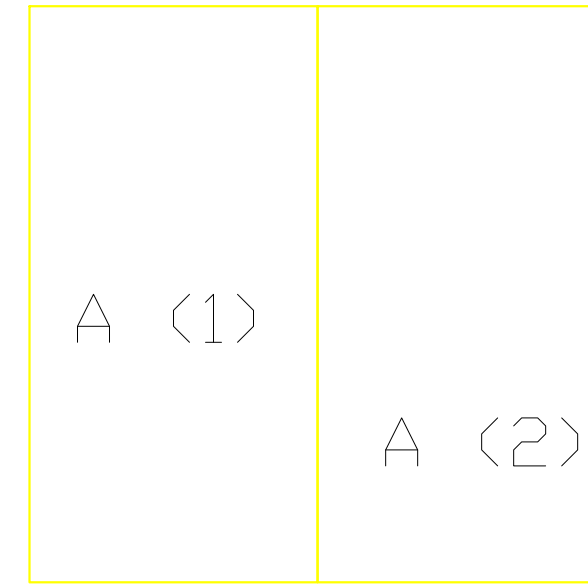
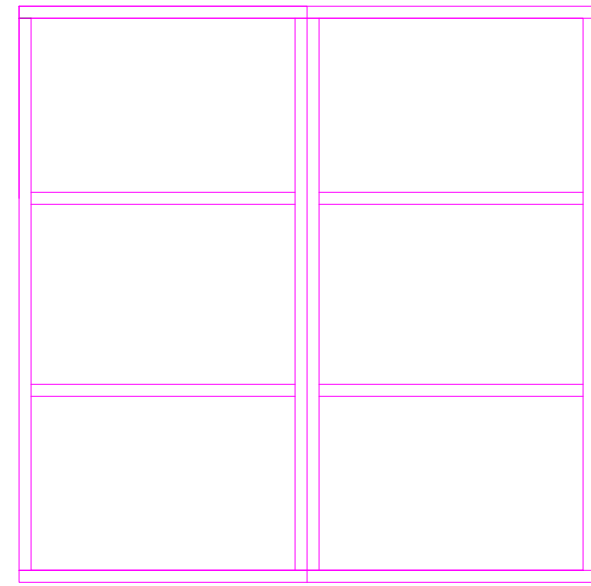
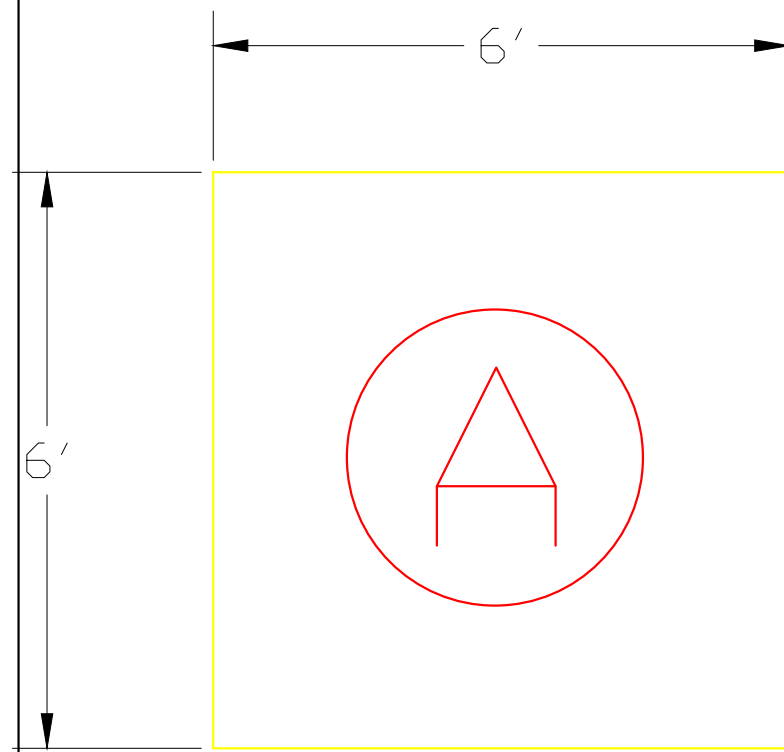
Why did you choose for this page to be the first plate?  
Missing hidden lines in top view  
labels of individual stairs (S1, S2) should also be on ground plan layout, and all labels should match  
overall aesthetic of drawings is nice and consistent, and easy to read, although are quite different from theatrical graphic standards  
Needs notes about materials and construction methods.



# Platform Estimate

By: Massiel Gomez  
Scale:  $\frac{1}{2}$ " = 1'-0"

PLATFORM FOR MAMA

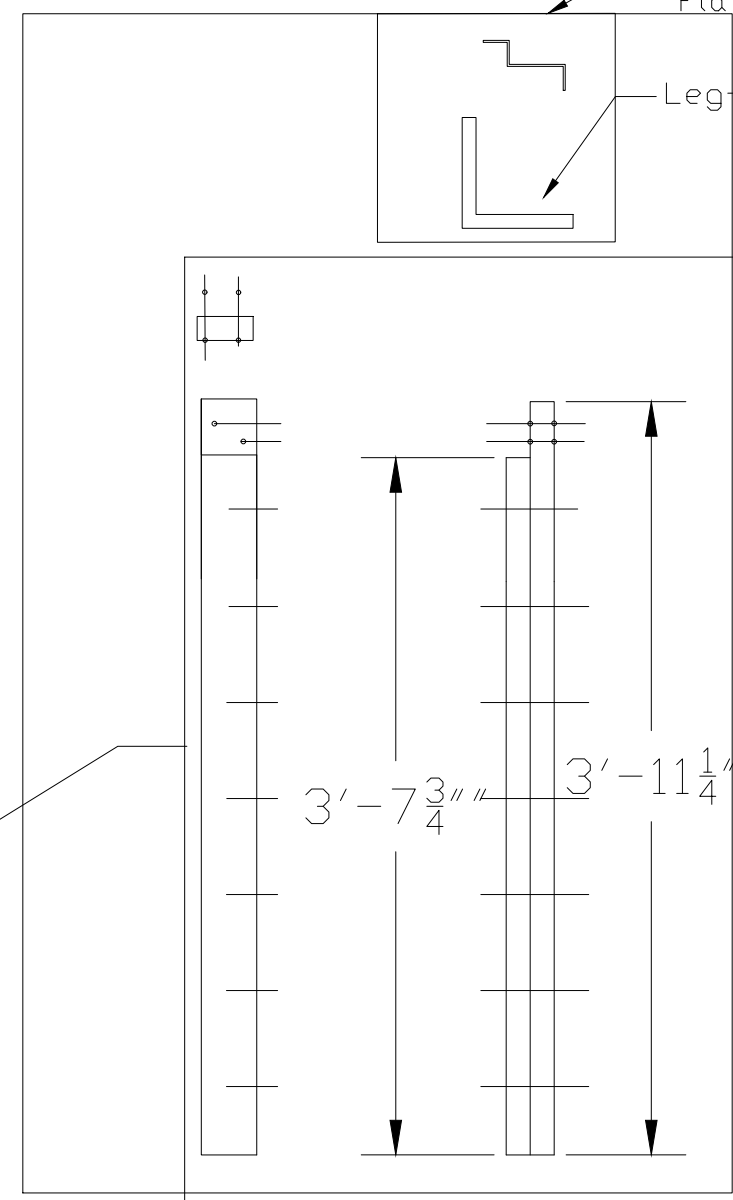
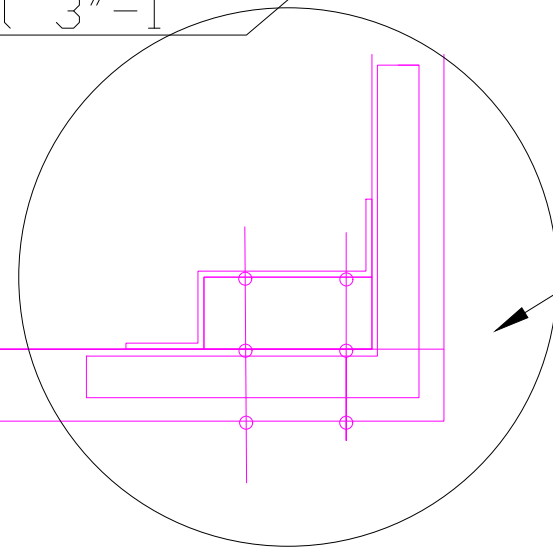


To Assemble or connect:  
1 Nut, 1 Bolt and 1 Washers

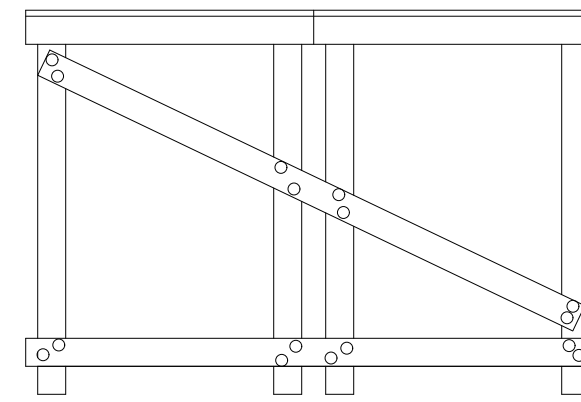
2-1/2 in. Zinc-Plated  
Flat Corner Brace (4-Pack)  
Leg-a-Matic™ Corner Bracket

reasonable construction choices, and fairly easy to read drawings  
need dimensions for toggle placement  
need notes about materials and construction methods for platforms  
more legs than are really needed - every 4' is okay.

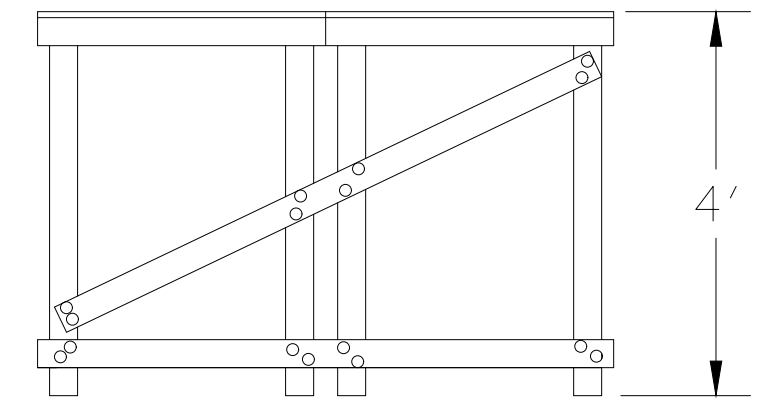
Detail 3"-1



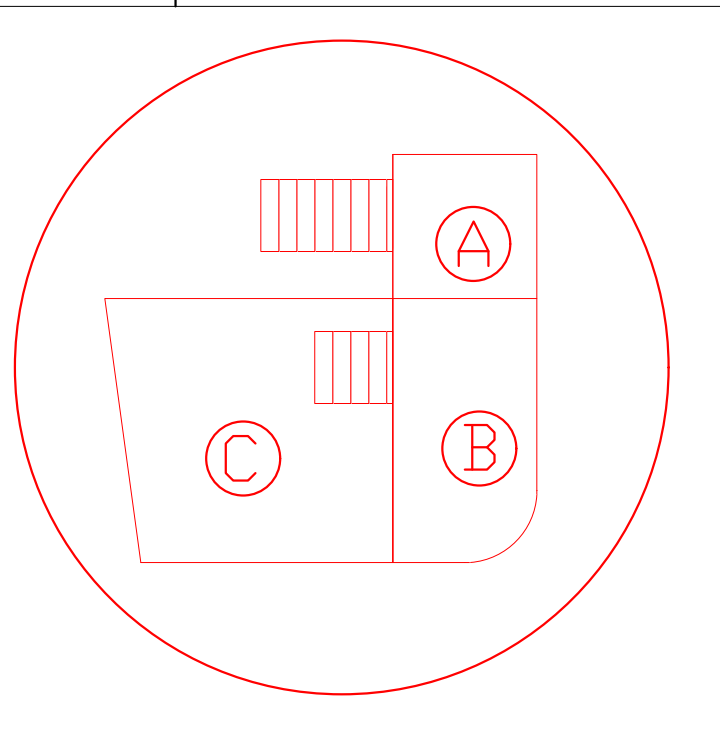
Leg detail 1"=1'-0"  
7 Staples  
2 Nuts, 2 Bolts and 2 Washers



Elevation 1

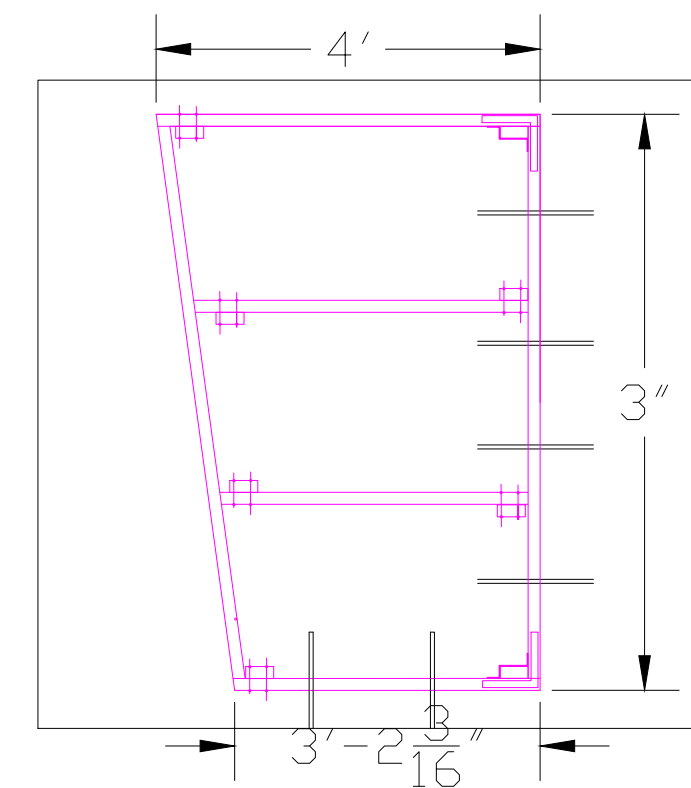
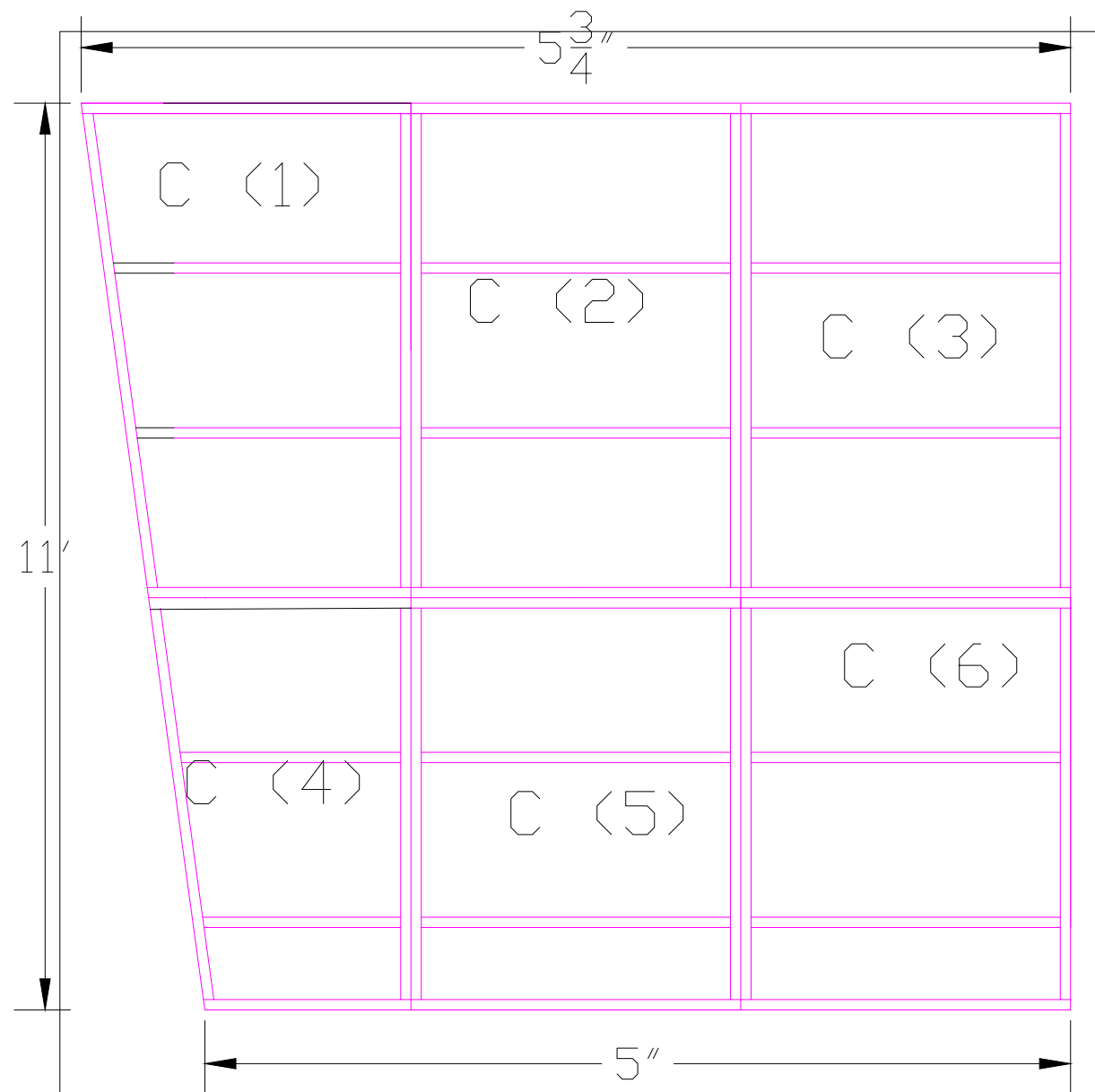
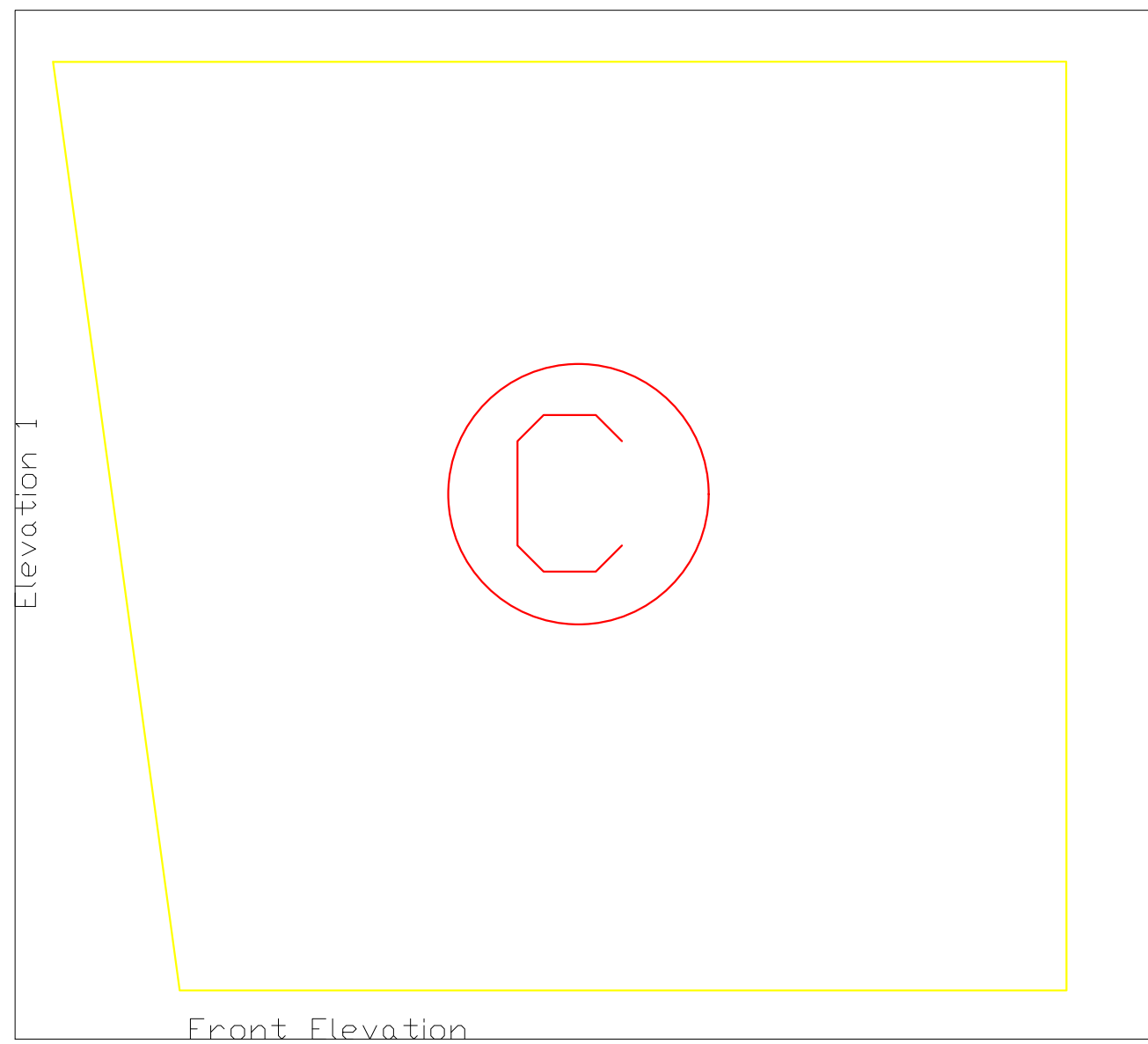


Front Elevation

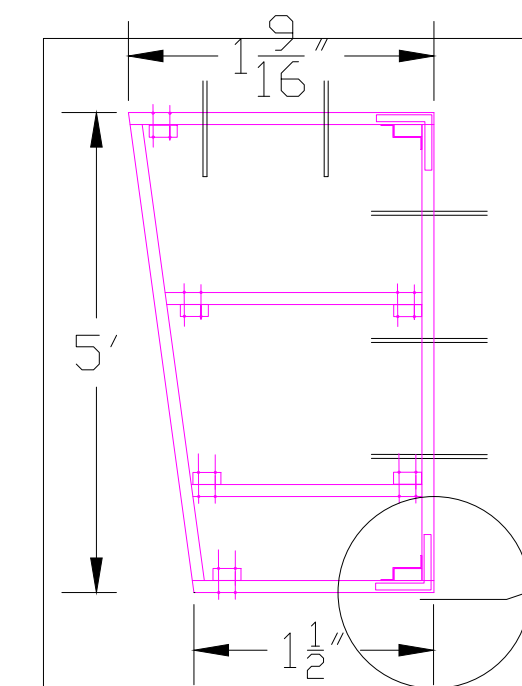


# Platform Estimate

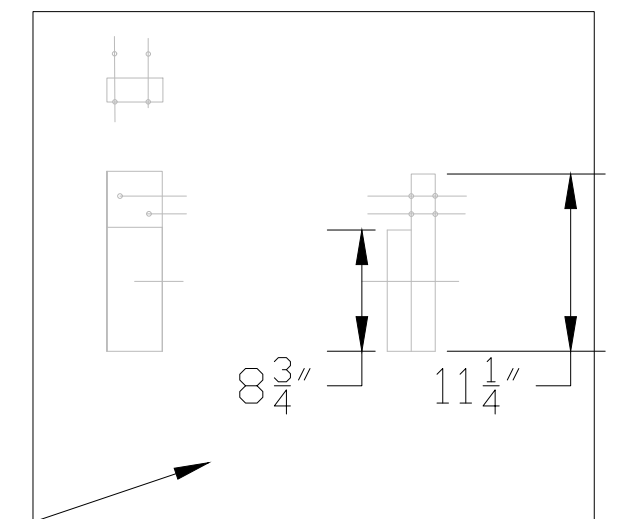
By: Massiel Gomez  
Scale: 1/2" = 1'-0"



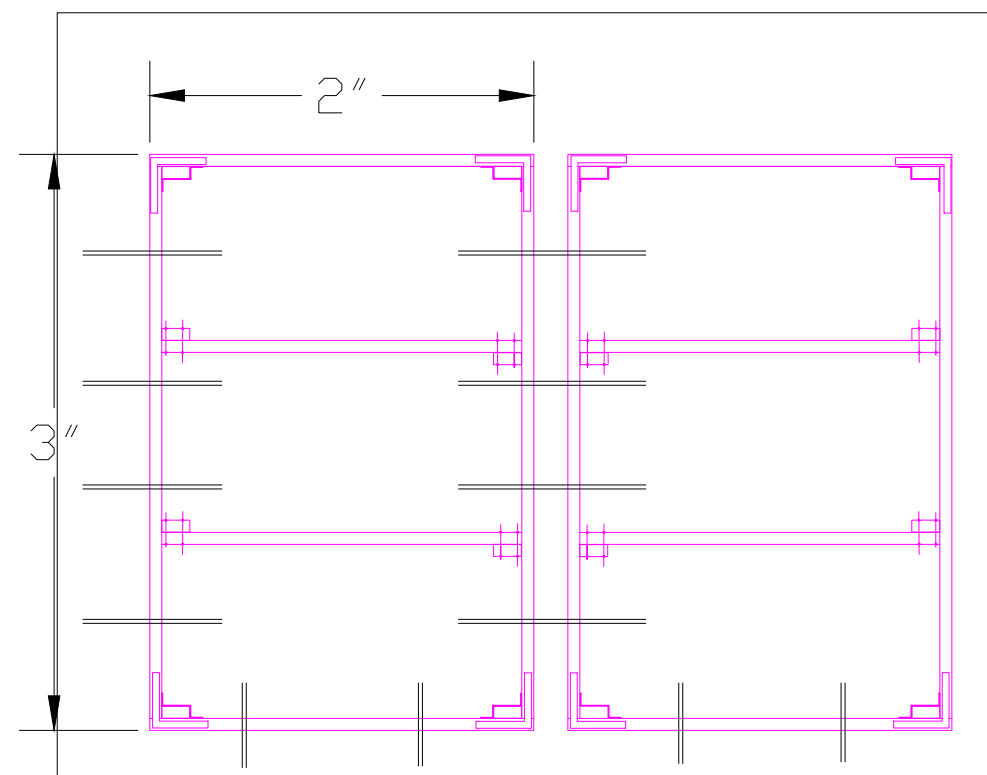
Platform C1



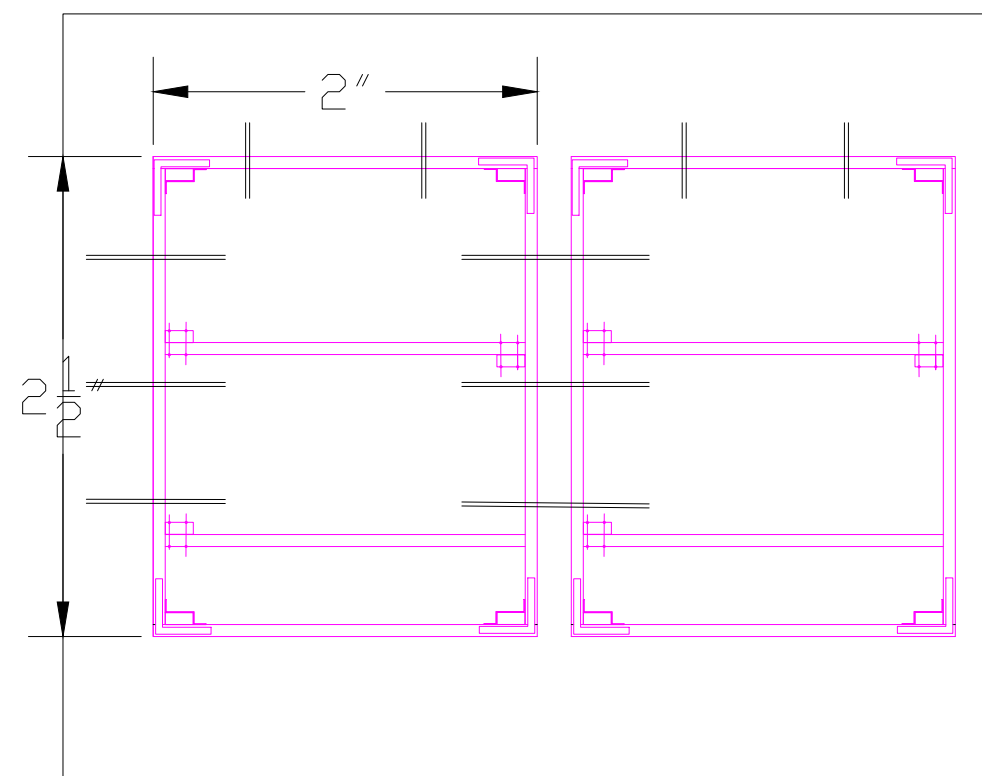
Platform C4



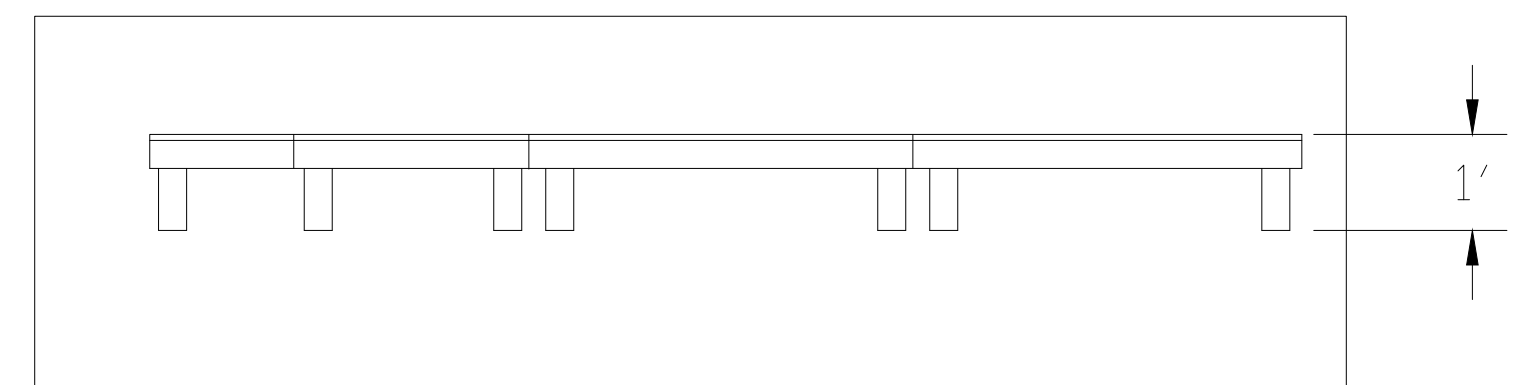
Leg detail 1" = 1'-0"



Platform C(5-6)

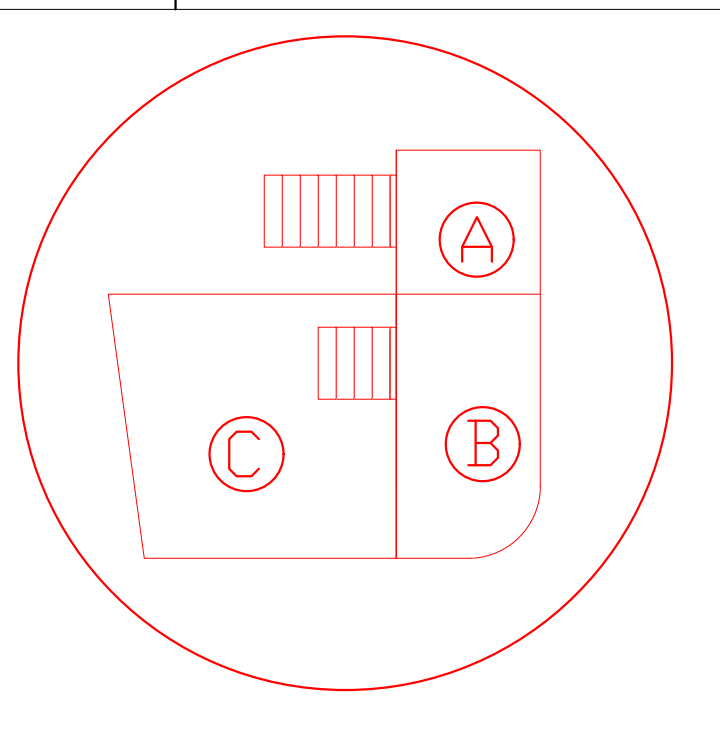


Platform C(2-3)



Front Elevation view 1/2" = 1'-0"

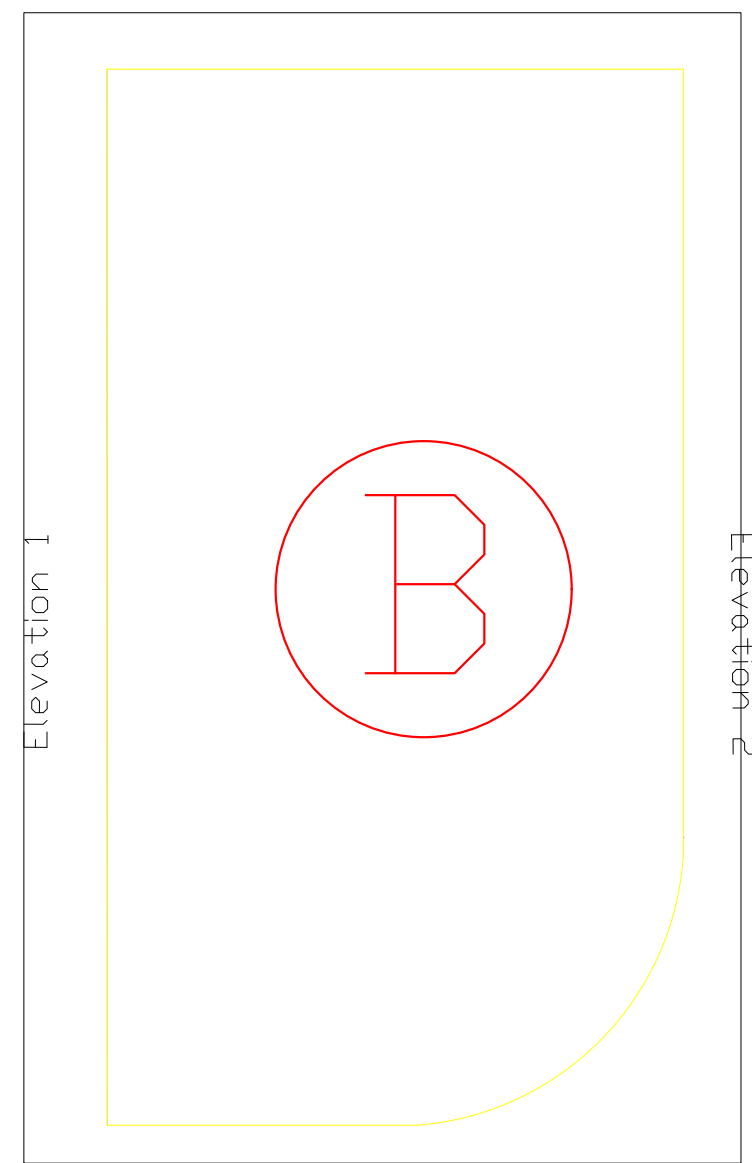
dimension problem on this page  
 why did you choose to divide the platform this way? 4'x8' platforms would fit into the layout and be a more efficient use of your materials.



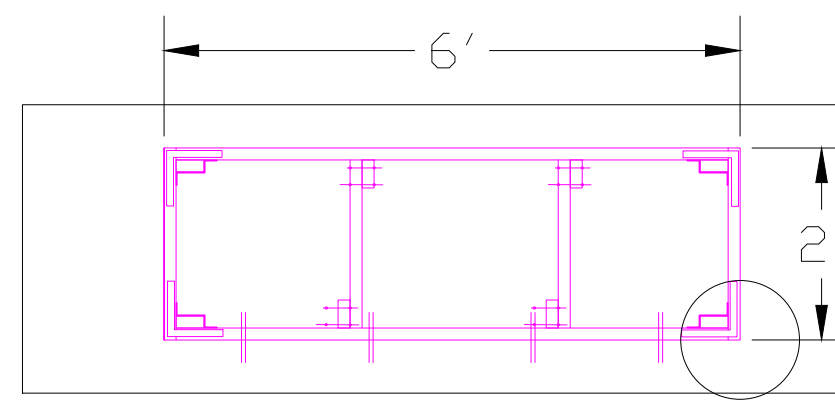
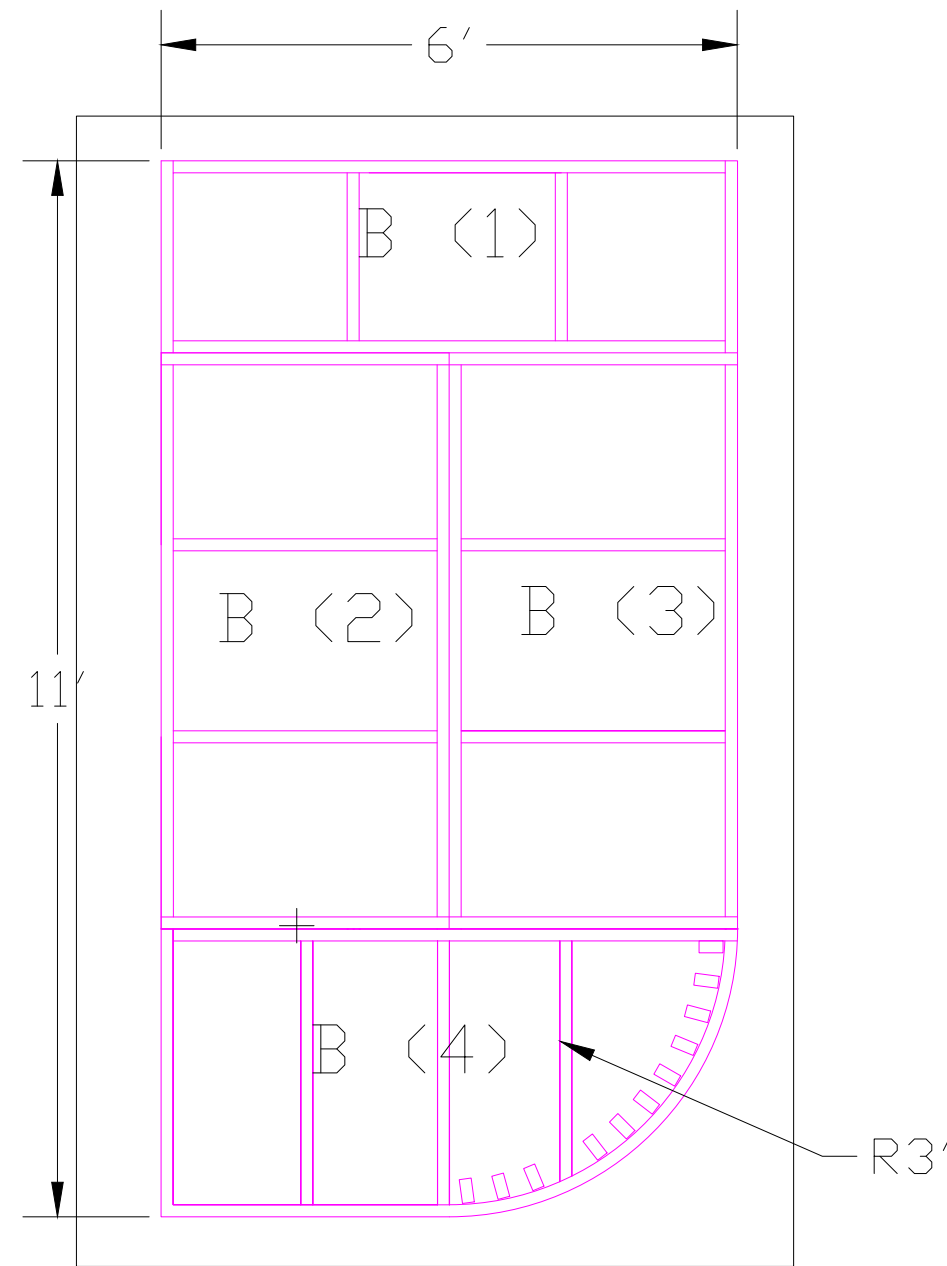
# Platform Estimate

By: Massiel Gomez  
Scale: 1/2" = 1'-0"

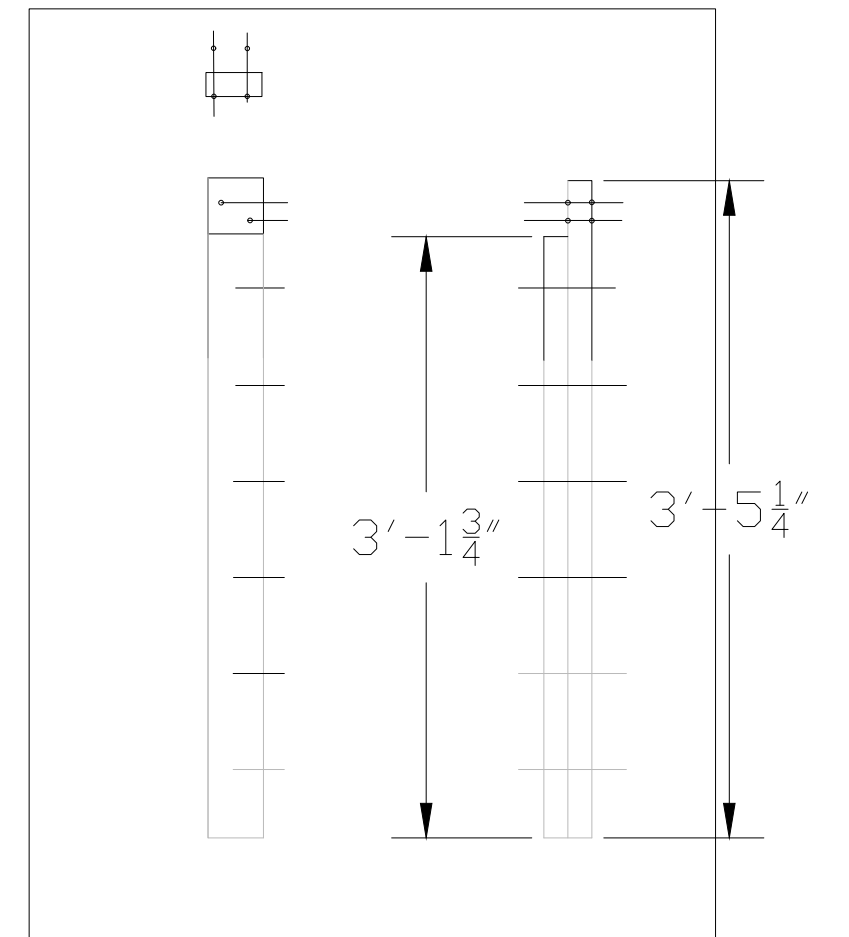
P  
L  
A  
T  
F  
O  
R  
M  
B



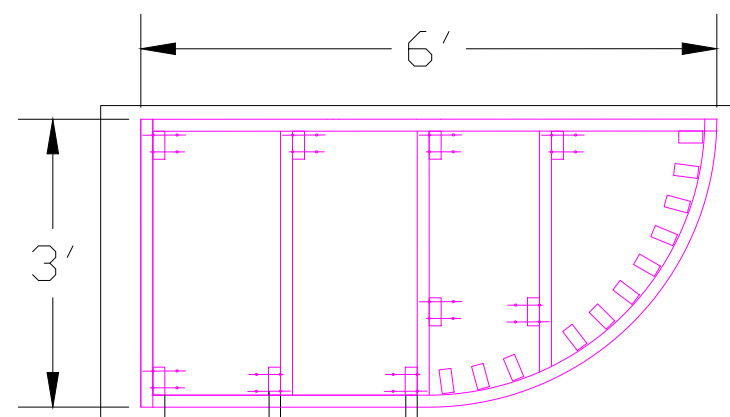
Front Elevation



Platform B1

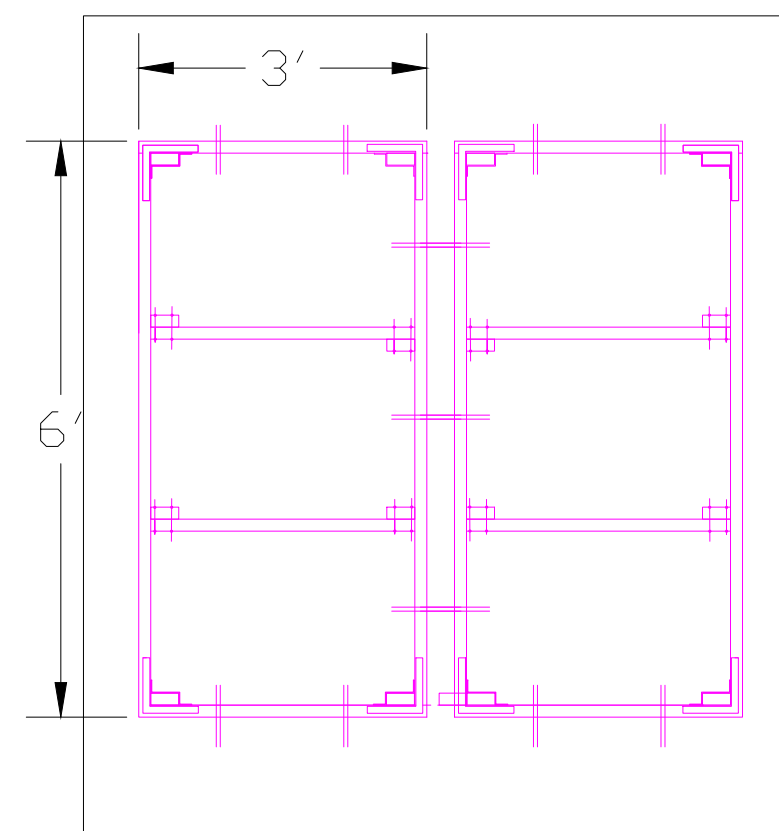


Leg detail 1"=1'-0"

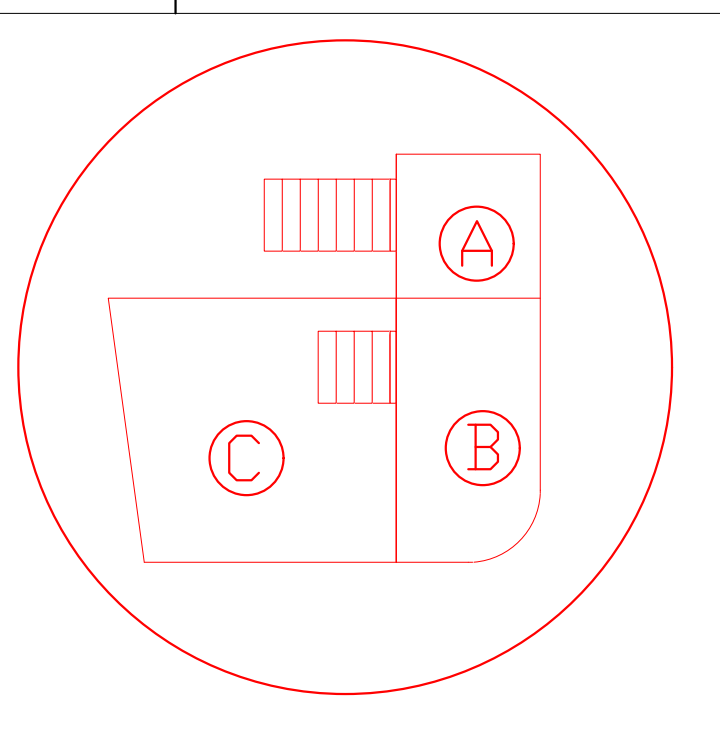


Platform B4

How are you making this curve?  
Need way more notes.  
Why did you divide this into 3'x6' pieces?



Platform B(2-3)



# Platform Estimate

By: Massiel Gomez  
Scale: 1/2" = 1'-0"

2