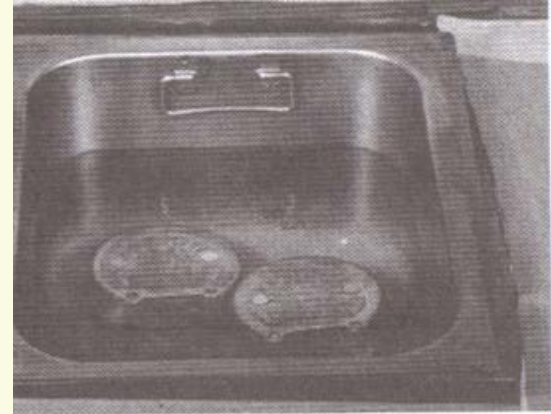


# (1) Flasking and Boiling out RPD Bases

---

## (b) Boil out

- 1 One flask takes 4.5 minutes to heat up before separating
- 2 Separate flask and remove all wax residue
- 3 Watch for floaters



## (2) Processing RPD Bases

### (a) Apply separator

1 Paint a minimum of 2 coats on all stone surfaces

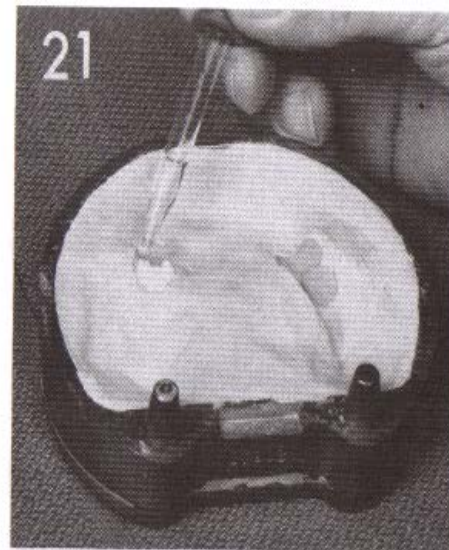
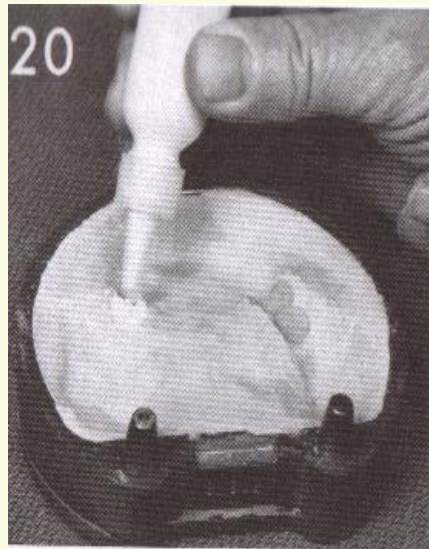
2 DO NOT allow separator to pool in retention areas



## (2) Processing RPD Bases

### (b) Packing

- 1 When working with acrylic, wear chemical resistant gloves
- 2 Wash gloves thoroughly to prevent a line of demarcation caused by powder on gloves
- 3 Mix acrylic resin IAW manufacturer's directions

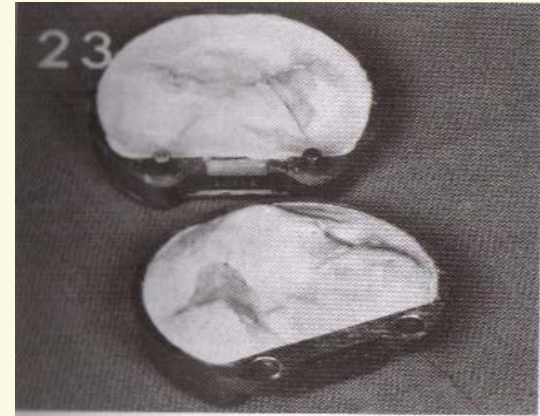


## (2) Processing RPD Bases

### 4 Split pack

a Place acrylic in both halves of flask

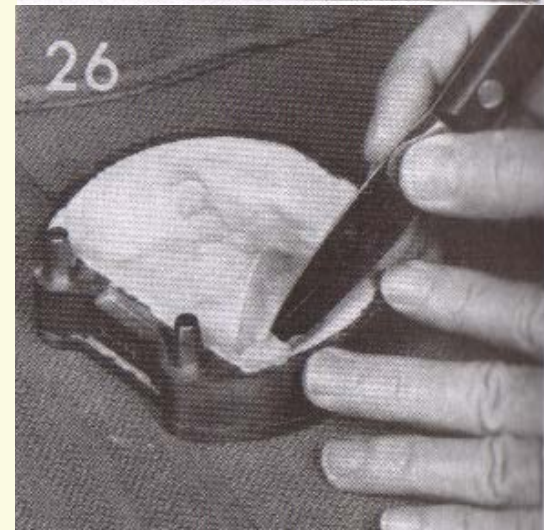
- 1 The frameworks are retained in the lower half of the flask and the teeth in the upper
- 2 This prevents the teeth and/or frameworks from being dislodged during trial packing



## (2) Processing RPD Bases

### 4 Split pack

- b Use 2 plastic sheets between halves
- c Trial pack at least three times using plastic sheets between the halves for each trial pack
- d Do not allow acrylic to dry out during packing



## (2) Processing RPD Bases

5 Final pack - moisten both sides of acrylic with monomer to ensure there is no line of demarcation between the two halves



## (2) Processing RPD Bases

---

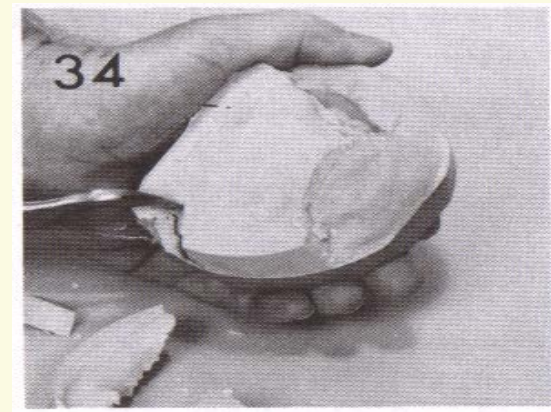
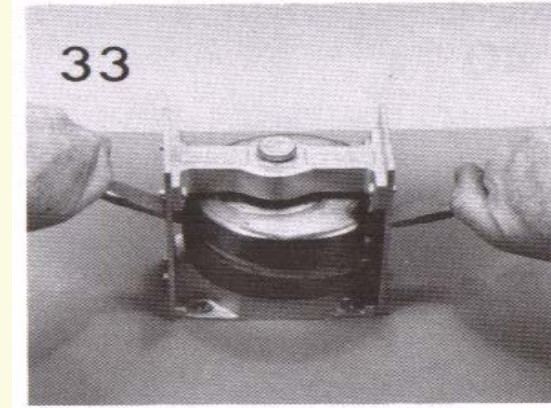
(c) Cure - 160° F for 8 hours and 45 minutes

1 Record flask numbers for identification purposes

2 Ensure flasks are completely submersed in water

# (3) Finishing RPD Bases

(a) Deflask - recover casts with frameworks in place





## (3) Finishing RPD Bases

---

(b) Remount the casts on the articulator

(c) Selective Grind Artificial teeth



## (3) Finishing RPD Bases

---

(c) Restore vertical dimension of occlusion

- 1 Ensure incisal pin contacts the incisal guide table
- 2 Be sure to maintain contacts in tight centric occlusion
- 3 Adjust Excentric excursions, Protrusive and lateral



## (3) Finishing RPD Bases

---

(d) Carefully remove RPDs from casts (don't break acrylic or bend out clasps)

(e) Finish

1 Trim flash using arbor bands or acrylic trimming stone

2 Free acrylic from clasp using sandpaper discs

3 Smooth transition between acrylic and external finish lines using rubber points and wheels

4 Borders should be round with no sharp edges

## (3) Finishing RPD Bases

---

5 Use a fissure bur to grind bubbles from gingival trim

### (f) Polish

1 Do not pumice festooning away - go back to finishing for hard to get areas

2 Close attention should be given around clasps

3 Repolish metal areas as necessary

(g) Disinfect RPDs IAW manufacturer's directions

# Denture Base Repairs

## Denture Tooth Repair

- Box Preparation
- Matrix to position tooth

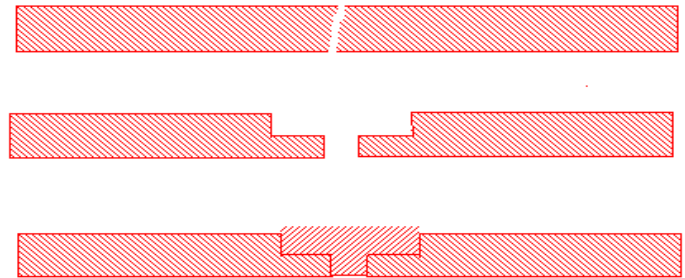


# Denture Base Repairs

---

## Denture Base Fracture

- Rabbet Preparation
- Position on cast



# Denture Base Repairs

---

## Denture Base Reline

– Reline Jig

