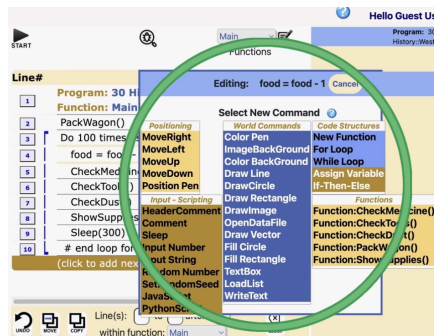


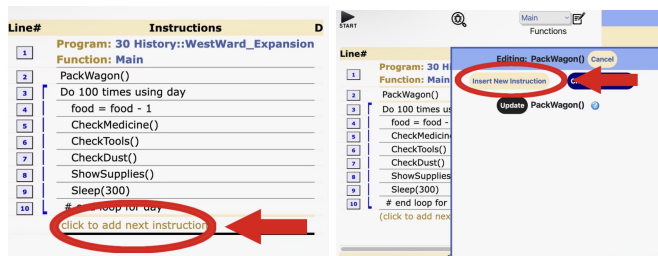
Change or Edit Commands |

- Click on an existing instruction
- Click *change command*
- Command Box will appear + pick the command you want
- After picking command, change the parameters



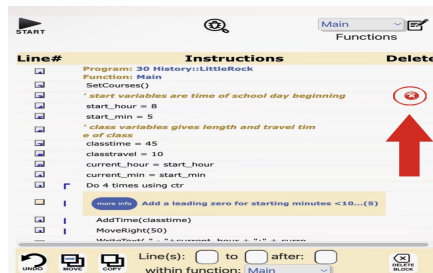
Adding Instructions |

- Click on *(click to add a new instruction)* at the bottom of the program
- OR
- Click on existing instruction and add a new instruction by clicking on *insert new instruction* in the prompt box.



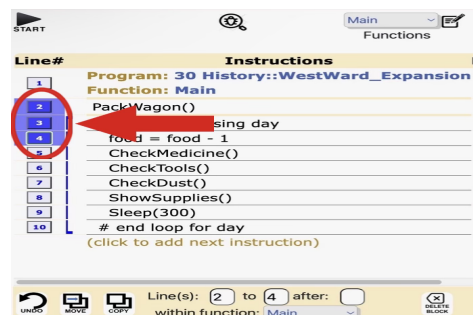
Deleting Instructions |

- Hover your mouse over the *Delete* column and click on the *red circled X*



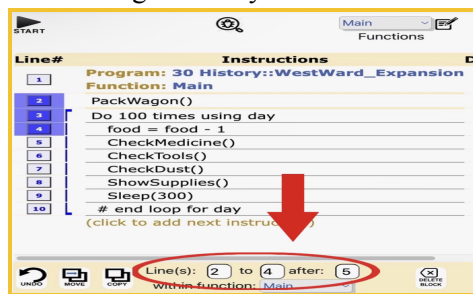
Grouping Instructions |

- Click on the instructions number, and always in a line. After the instruction numbers will light up blue.
- Always group in 2 or more instructions



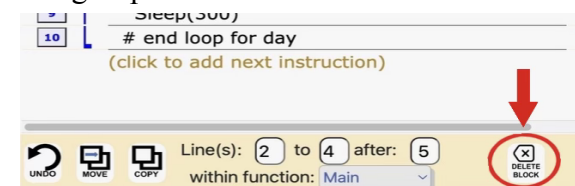
Copying Instructions | After grouping instructions

- At the bottom of your programming window. Fill out the boxes according to what you want

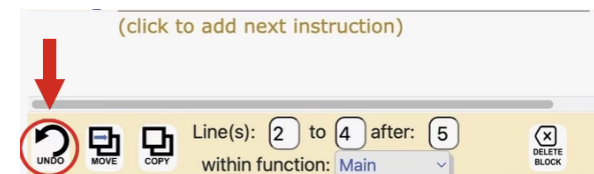


Deleting Groups | After grouping instructions

- Click on the delete block feature.
- The group of instructions will then be deleted.



Undoing Mistakes | When you want to undo any mistakes, click on the *undo* feature that's at the bottom left of your programming window



Collapsible Comments |

- Can hide a set of instructions, it's like you are shortening your Google Chrome page.

