



# In Their Footsteps

---

Lighting Designer: Lana Roff



# THE SHOW

---

- *In Their Footsteps*
- A documentative theatre piece
- One act, no intermission
- Told in 2 time periods
- Small, minimalist set



# THE SCHEDULE

---

**Wednesday, November 8** - Load In/"Hang+Focus" - 4 hours

**Saturday, November 11**- Dry Tech/Work Thru - 6 hours

**Sunday, November 12** - Work Thru/Dress Rehearsal/Preview - 5 hours

**Thursday, November 30** - Opening Night

**Monday, December 4** - Performance #2

**Thursday, December 7** - Performance #3

**Sunday, December 10** - Performance #4

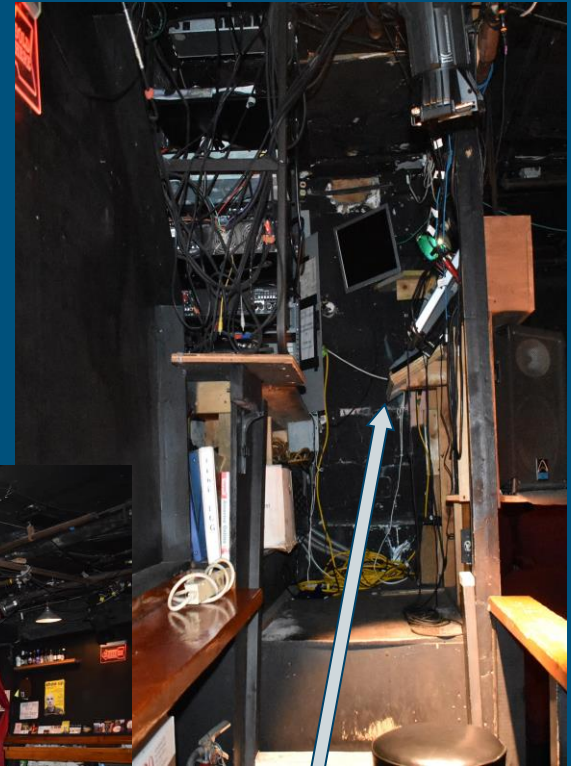
**Monday, December 11** - Closing Night

**Monday, December 11** - Strike

# THE SPACE

---

- Basement theatre
- 15' x 15' stage
- 10' ceiling height
- Pipe grid
- Small booth



Board

# THE GEAR

---

- ~40 light rig
  - 16 3" fresnels
  - 4 6" fresnels
  - 1 ETC S4 90°
  - 1 ETC S4 36°
  - 4 ETC S4 PAR WFL
  - 13 Altman 6x9
  - 2 Altman 6x12
  - 2 string lights
- NSI MC-7024 board
  - 2 scene preset
  - 24 channels



# THE DESIGN

---

## Pre-Show/Opening

- Only light on backdrop until announcer entrance

## Talk-Back

- Downstage light; first cue when announcer moves downstage to start

## Memory

- Fuller stage wash

## Finale

- Sunrise as they speak

## Special

- Announcer special for when she speaks

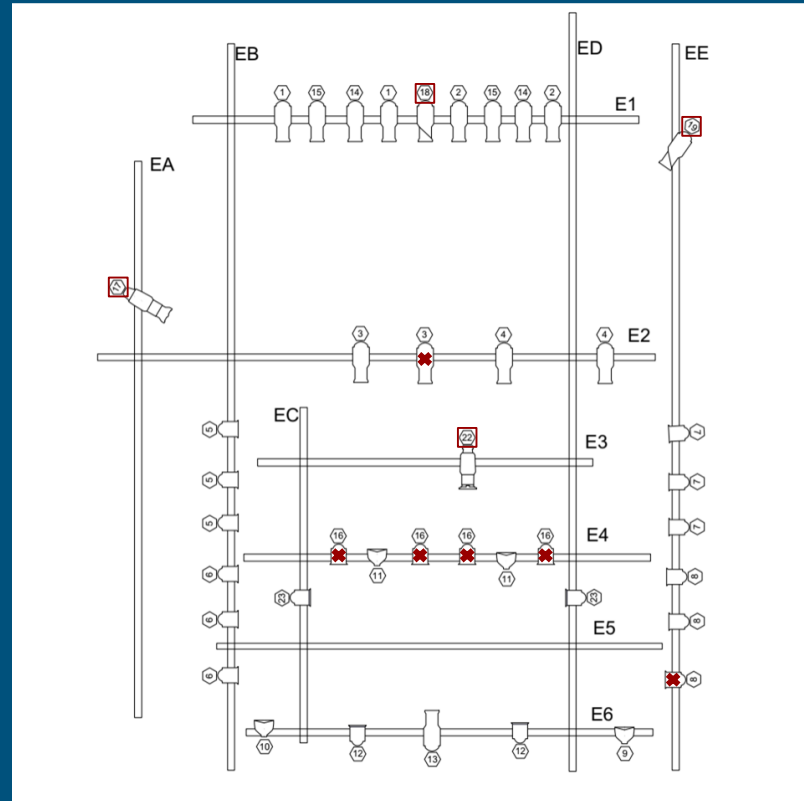


# THE PROBLEMS

---

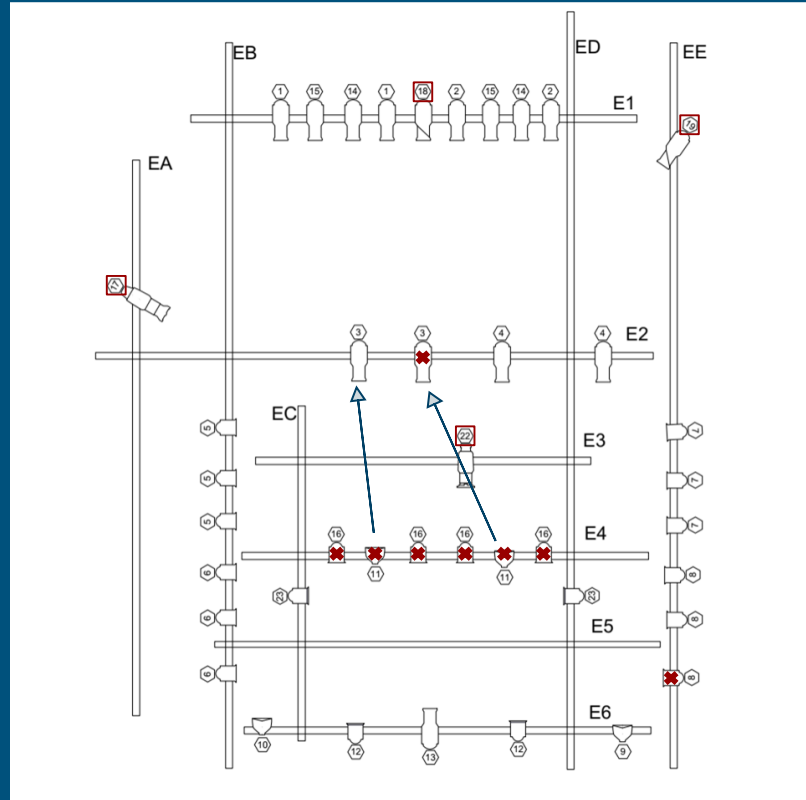
- Had to refocus and restore every single night
- Limited focusable lights
- Several lights not working
- Strange placement and circuiting
- Stage off center from seating
- Limited gel choices
- Blown circuit --> re-channel
- The board/cue sheet

# THE PLOT





# THE RE-CHANNEL



# THE CUE SHEET

55																											
56	LX 56 (Talk-Back)	A	Channel	1	2	3	4	5	6	7	8	9	10	11	12	13	14	15	16	17	18	19	20	21	22	23	24
57			Level	7	7													6	6		F		F				
58		B (sunrise preset)	Level	5	5				F		F						4	4		7		7				0	
59																											
60	LX 57 (SUNRISE SLOW UP)	B (SUNRISE)	Channel	1	2	3	4	5	6	7	8	9	10	11	12	13	14	15	16	17	18	19	20	21	22	23	24
61			Level	5	5				F		F							4	4		7		7				0
62		A (SET SUNRISE ALONE)	Level	0	0				F		F						0	0		0		0					
63																											
64	LX 58 (TRANSITION W SOUND)	A	Channel	1	2	3	4	5	6	7	8	9	10	11	12	13	14	15	16	17	18	19	20	21	22	23	24
65			Level						F		F																
66																											
67	LX 59 (FADE BLACKOUT)	M	SLOW SLOW SLOW - USE MASTER TO FADE OUT WITH SOUND CUES, FLIP ON B 1-5 + 7																								
68																											
69																											
70	LX 60 (CURTAIN-CALL)	M AND B	DURING BLACKOUT, 1-5 + 7 @ FULL																								
71																											
72																											

# THE LESSONS LEARNED

---

- Adaptability
- Problem solving
- Team work
- Embrace the space
- Magic sheets are life savors
- I have been spoiled at City Tech

