

"BEET, BEET WITH BLACK BEANS"



Lizeth Pilamunga
Textile BUF 2246
April 25th, 2022
Research Assignment

INTRODUCTION

In this research assignment, I will discuss the significant factors of natural dyeing in the process. I use beets and black beans as my natural dyeing substances. I chose these natural substances because beets have a bright red color and black beans have a darker color that combines perfectly. I chose these substances because I felt they had a good combination. I also chose a natural cotton fabric as a preferred t-shirt in this experiment. Natural dyeing is more sustainable for our environment, unlike the toxic substances normally used in the dyeing process. However, according to the article "Dyes From Plants" Until the mid-19th century, natural vegetable dyes were the only source of ink available (Susan Patterson, Master Gardener). You will see me go through different procedures to successfully retain a dyed spiral high in both of my pigments. The technique I used for my natural dyeing process was the accordion fold and crumble method. Both methods were necessary to produce the desired result you were looking for. The creative process was fun and anxious since I didn't know what the final result would be. One of my favorite steps in the process was painting the fabric with the two pigments. Understanding the lines of the elastic they produced, I enjoyed trying to paint the two-stroke patterns that I came up with. In more detail, I'll explain why each pattern was important in achieving the desired tint pattern.

COLOR IN FASHION TODAY

The red color is a very striking color, it is one of the first pigments found in nature that man used. The red color is a very warm color. It symbolizes fire, blood, heart, and danger. In certain Eastern cultures, it is a symbol of happiness and prosperity. The red color transmits vitality, courage, and optimism. Something that caught my attention was that this color increases respiratory rate and blood pressure. While the color black is associated with power, fear, mystery, strength, authority, elegance, formality, death, evil and aggression, authority, rebellion, and sophistication. Black is required for all other colors to have depth and variation in tone. I don't have a favorite color, I always dress in all colors. I always like to wear a different color, depending on the location. My inspiration for my sense of style has always been driven by Rihanna. Growing up, she has always been a young fashion icon, with her sophisticated style. She is the best-selling artist of all time. According to the article "Rihanna," Rihanna is a bona fide businesswoman with multiple ventures. More importantly, however, her undeniable cultural influence has forever imprinted her in history as a global icon despite her young age. Her innate sense of style, from cutting-edge hairstyles to immaculate fashion foresight, has earned her more than 70 magazine covers. She was named in 2014 as the face of the spring campaign where she received the prestigious fashion award from the Council of Fashion Designers 2014.

I attach the photos of her where she has been dressed in red clothes, with her black hair in the reference section.

DYING PROCESS PHASES



Phase 1 : Ingredients to create a natural dye

1cup of beet (water)

1 cup of black beans (water)

Rubber bands

T-shirt

French petit pot plastic containers.

Phase 2. I already cook the beet and the black beans separately.
Wait for the water to cool down and place it in these French petit pot plastic containers.

For me, it was easier to place the pigment in these containers for a better application



Phase 3. I start to fold my t-shirt in the spiral fold method, in order to get a good spiral use a fork to roll it gently, and then I used my hands to hold it and put the rubber bands.



Phase 4. After that, I placed the shirt in the sink to start the dying process (optional) using a grill so that when the water drains it is easier.

THE FUN PART START!!

Very carefully apply the pigment from beet (red color)to the middle of the shirt.



Then with the pigment from the black beans (black color) apply the other half.

Phase 5-6. After you put the two colors in, let it sit for 24 hours.
After 24 hours I finally opened it and this was a wonderful result.



FRONT

BACK



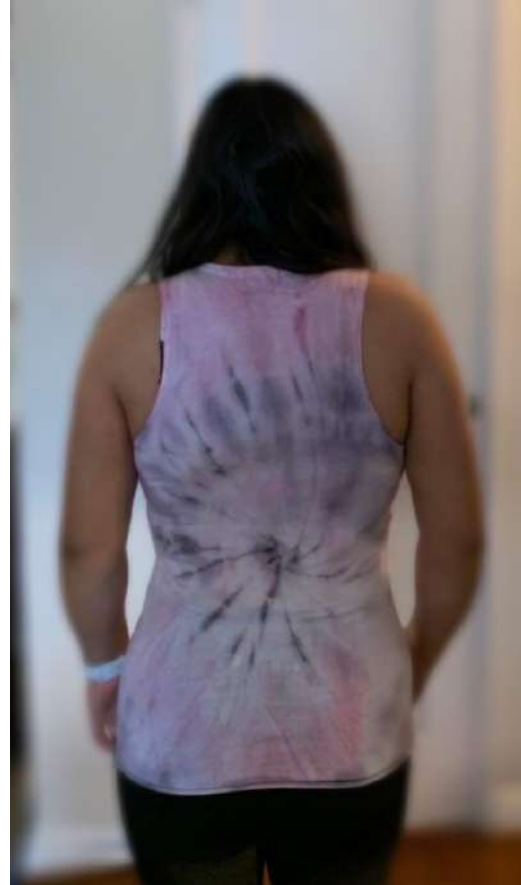
Phase 7-8 When I took out my shirt and finally saw my result I was very surprised that the spiral design turned out so well. I used cold water and soap to wash my shirt and let it dry and these are the final results.



Wet results, after washing



NEXT DAY, AIR DRY RESULTS



FINDINGS

As a result, I found that beets give a light pink color and black beans give a deep purple color not black.

I thought the color would come out when I washed it but no. I also discovered that using the spiral folding technique works perfectly when it comes to figures. I also found that using rubber bands for this pattern is needed.

They have to be approximately 4 bands nothing more to obtain a very defined spiral pattern

Finally, after having the t-shirt air dried overnight, I noticed a difference in the color of the dye. The color started to fade

away after it was air-dried overnight. It created more of a light violet pink color instead, I'm

I am still very satisfied with my results. I'm going to try again with a different natural substance.

REFERENCES

A. (2021, February 7). *Dye with Black Beans*. Practical and Pretty.

<https://practicalandpretty.com/dye-with-black-beans/>

Bio. (n.d.). Rihanna. Retrieved April 22, 2022, from <http://www.rihannanow.com/bio/>

Bourn, J. (2016a, June 4). *Color Meaning: Meaning of The Color Black*. Bourn Creative.

<https://www.bourncreative.com/meaning-of-the-color-black/#:%7E:text=The%20black%20color%20is%20the%20absence%20of%20color,color%20black%20represents%20strength%2C%20seriousness%2C%20power%2C%20and%20authority.>

Bourn, J. (2016b, June 4). *Color Meaning: Meaning of The Color Red*. Bourn Creative. <https://www.bourncreative.com/meaning-of-the-color-red/>

Grant, A. (n.d.). *StackPath*. Gardening Know How.

<https://www.gardeningknowhow.com/edible/vegetables/beets/natural-beet-dye.htm>

How To Make A Single Color Spiral Tie Dye Shirt Including Tips To Help Keep The White Area White. (2020, June 5). YouTube.

https://www.youtube.com/watch?v=P_CgohEZhC4

BELOW ARE SOME OF MY FAVORITES RIHANNA OUTFITS IN BLACK AND RED. THANK YOU!

