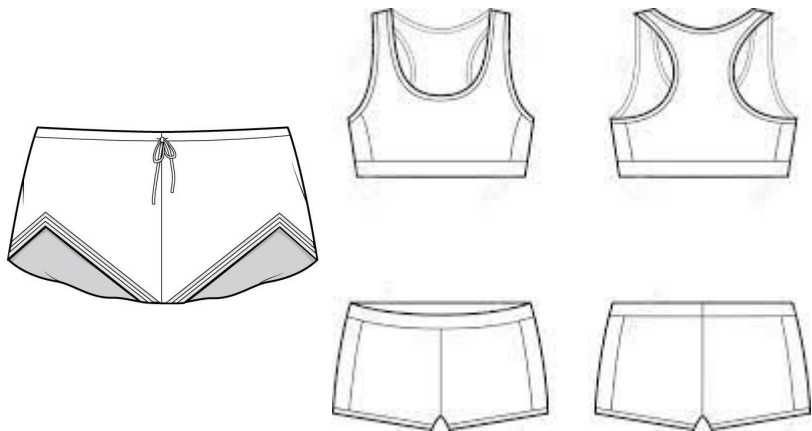


# Choosing Textiles For Fashion

Lori Perez Matos



# Junior Miss Profile 6



## Crushed panne velour for athleisure ensemble

**Sample #** 150

**Sample Name** stretch velvet

**Fiber Content** 90% polyester/10% spandex

**Main Features** tricot warp pile knit

**Other Notes** cut pile



## Tricot nylon knit for hoodie

**Sample #** 146

**Sample Name** tricot

**Fiber Content** 100% nylon

**Main Features** tricot warp knit

**Other Notes** a.k.a. tricot jersey / 1.9 OSY





## Outing Flannel shirt fabric for 90s grunge party

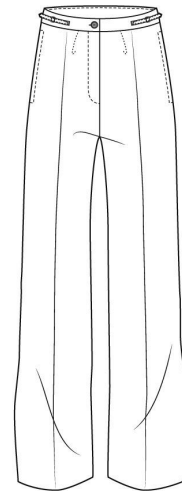
Sample # 180

Sample Name gingham print

Fiber Content varies with sample

Main Features print imitates yarn-dyed, woven gingham / direct roller print

Other Notes applied design vs. structural design / printed on undyed background



## Denim twill cotton skinny jeans (cotton, indigo dyed)

Sample # 86

Sample Name denim

Fiber Content 100% cotton

Main Features natural cellulose fibers / open-end spun yarns / average twist yarns / warp-faced twill / indigo dyed

Other Notes Some samples SAFEDenim = Sustainable, American, Friendly to the Environment / made in the U.S.A.  
[www.safedenim.com](http://www.safedenim.com) / open-end a.k.a. OE-spun yarns / regular twist / 3/1 twill / 12.5 OSY / indigo originally a plant dye, today usually a synthetic dye



## Polyester chiffon for prom dress

**Sample #** 48

**Sample Name** chiffon

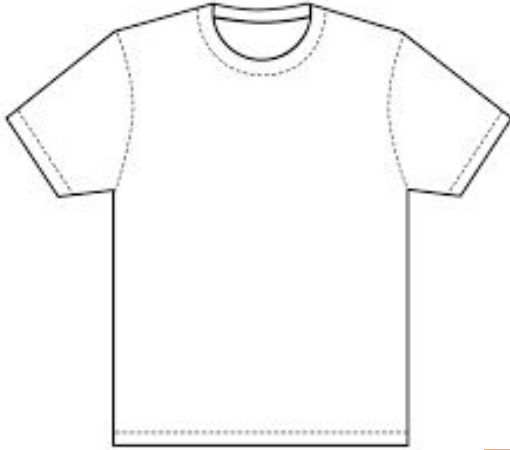
**Fiber Content** 100% polyester

**Main Features** balanced lightweight sheer plain weave / anti-static

**Other Notes** filament yarns with high twist / avoids static cling



# Profile 7 Activewear



T-shirt plain jersey knit

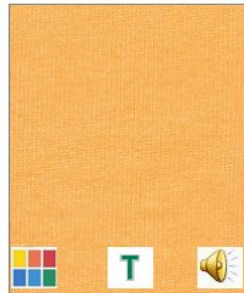
**Sample #** 120

**Sample Name** t-shirt knit (plain jersey)

**Fiber Content** 100% cotton

**Main Features** knit fabric (dyed) / single weft knit, plain jersey

**Other Notes** fabrication type and dyeing impact textile performance / small gauge=small loops / fabric was dyed after knitting



Tricot knit for basketball pants

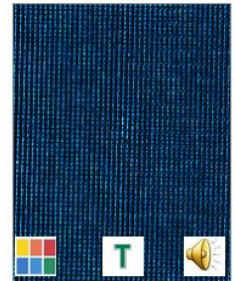
**Sample #** 146

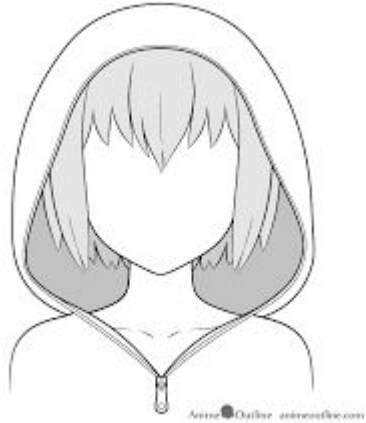
**Sample Name** tricot

**Fiber Content** 100% nylon

**Main Features** tricot warp knit

**Other Notes** a.k.a. tricot jersey / 1.9 OSY





## Athletic mesh for hoodie lining

**Sample #** 159

**Sample Name** athletic mesh

**Fiber Content** 100% nylon

**Main Features** raschel warp knit

**Other Notes** open mesh



## Sweatshirt Fleece for traditional sweatpants

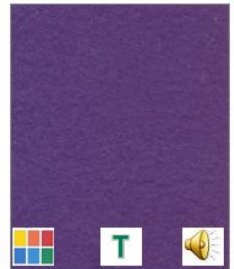
**Sample #** 30

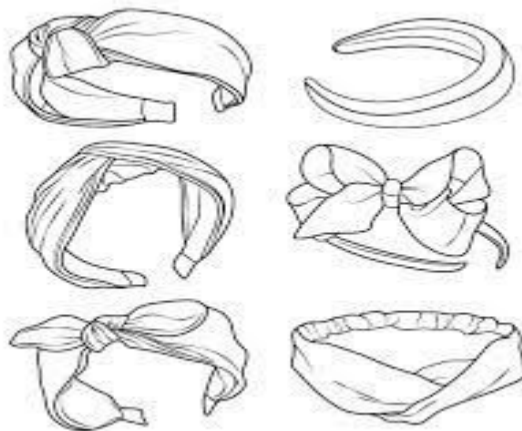
**Sample Name** Polartec® fleece

**Fiber Content** 100% polyester (88% recycled/12% virgin)

**Main Features** recycled synthetic fiber blends / pile weft knit / napped and sheared / singed

**Other Notes** recycled polyester, made from plastic beverage bottles and/or industrial waste / hollow-core fiber / Polartec® is a registered trademark of Polartec® LLC [www.polartec.com](http://www.polartec.com) / double-faced velour / warm and soft, smooth face and back, from napping and shearing / singeing reduces pilling





## Terrycloth headband

**Sample #** 117

**Sample Name** terrycloth

**Fiber Content** 100% cotton

**Main Features** warp pile weave

**Other Notes** extra warp yarns, slack-tension pile method



# Profile #8: Womenswear



**Velour Knit pants with hoodie**

**Sample #** 142

**Sample Name** velour knit

**Fiber Content** cotton/polyester

**Main Features** pile weft knit

**Other Notes** cut pile



**Batik peasant shirt in cotton**

**Sample #** 91

**Sample Name** sateen

**Fiber Content** 100% cotton OR cotton/spandex

**Main Features** spun yarns / satin weave (warp seen on face) / schreinerized

**Other Notes** matte appearance / sateen has spun yarns / enhanced luster







## Black denim skinny jeans

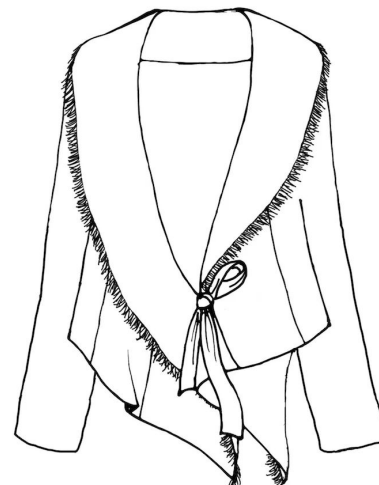
**Sample #** 86

**Sample Name** denim

**Fiber Content** 100% cotton

**Main Features** natural cellulose fibers / open-end spun yarns / average twist yarns / warp-faced twill / indigo dyed

**Other Notes** Some samples SAFEDenim = Sustainable, American, Friendly to the Environment / made in the U.S.A. [www.safedenim.com](http://www.safedenim.com) / open-end a.k.a. OE-spun yarns / regular twist / 3/1 twill / 12.5 OSY / indigo originally a plant dye, today usually a synthetic dye



## Wild silk jacket

**Sample #** 14

**Sample Name** wild silk

**Fiber Content** 100% silk

**Main Features** natural protein fibers

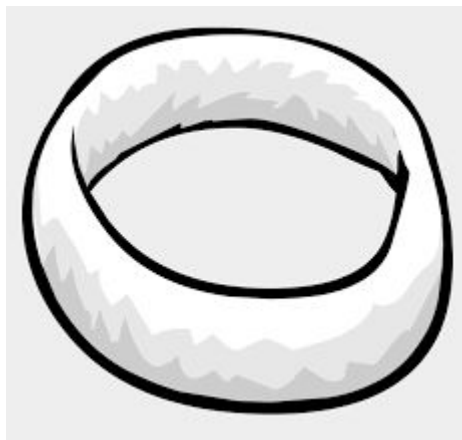
**Other Notes** from wild silkworms, staple fibers



## Jacquard ribbon for headband



**Sample N43**  
**jacquard ribbon**  
100% polyester  
extra yarn weave / extra yarn  
weave fabric  
floats on back / narrow fabric



**Sample N43**  
**jacquard ribbon**  
100% polyester  
extra yarn weave / extra yarn  
weave fabric  
floats on back / narrow fabric

## Profile #12: Eveningwear



Burnout pile fabric for short evening dress

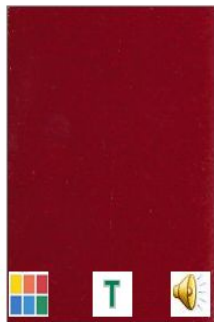
Sample # 116

Sample Name velvet

Fiber Content 65% acetate (pile)/ 35% nylon (base fabric)

Main Features mixture fiber blend / warp pile weave

Other Notes base and pile are different fibers / velvet has filament yarns and pile comes from extra warp yarns



Raised lace for maxi dress or skirt

Sample # 153

Sample Name raised lace

Fiber Content 100% polyester

Main Features raschel warp knit

Other Notes raised lace a.k.a. re-embroidered





## Embroidered polyester for skirt overlay

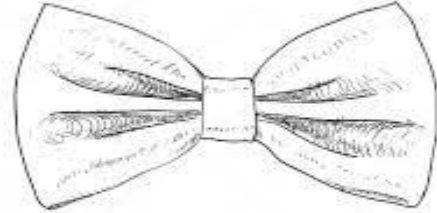
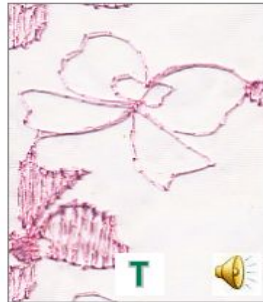
**Sample #** 202

**Sample Name** embroidered

**Fiber Content** 100% polyester

**Main Features** embroidered

**Other Notes** thread design sewn on



## Bridal satin bowtie

**Sample #** 90

**Sample Name** bridal satin

**Fiber Content** 100% acetate

**Main Features** cellulose derivative fibers / filament yarns / low twist multifilament yarns / satin weave (warp seen on face)

**Other Notes** acetate was the first thermoplastic (heat sensitive) fiber / lustrous / low twist maximizes luster / satin has filament yarns



1930

22% OF WOMEN PARTICIPATED  
IN THE U.S. WORKFORCE.



## Silk Noil suit

**Sample #** 16

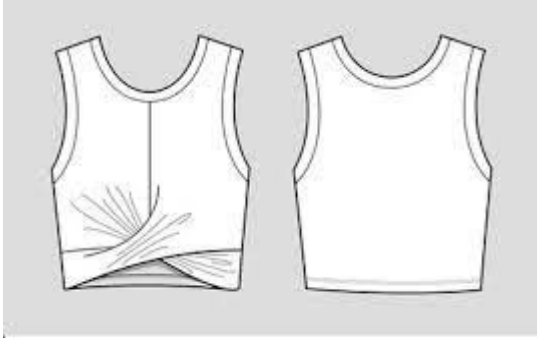
**Sample Name** silk noil

**Fiber Content** 100% silk

**Main Features** natural protein fibers / spun yarns

**Other Notes** waste silk, staple fibers / matte appearance





-----  
Sample # 37

Sample Name olefin upholstery

Fiber Content 100% olefin (polypropylene)

Main Features synthetic fibers / solution dyed

Other Notes generic olefin / olefin is durable / olefin typically solution dyed because of low absorbceny



shutterstock.com · 250739752



## CASUAL FRIDAY

Sample # 36

Sample Name weed control fabric

Fiber Content 100% olefin (polyethylene)

Main Features synthetic fibers / film / UV treated

Other Notes generic olefin / olefin is a low cost fiber / made from solution / ultraviolet resistant



shutterstock.com · 790378639

Sample # 37

Sample Name olefin upholstery

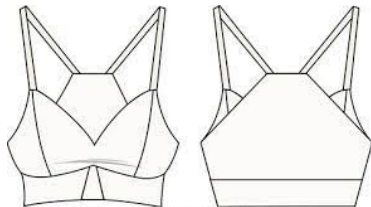
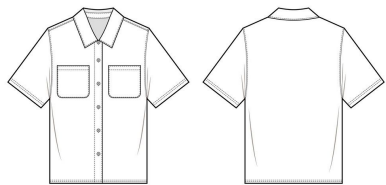
Fiber Content 100% olefin (polypropylene)

Main Features synthetic fibers / solution dyed

Other Notes generic olefin / olefin is durable / olefin typically solution dyed because of low absorptivity



5 types of clothing that works with the fabric pattern.



shutterstock.com - 193855467



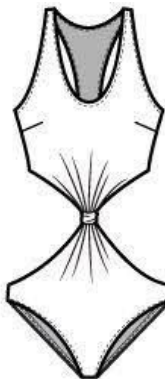
Sample # 36

Sample Name weed control fabric

Fiber Content 100% olefin (polyethylene)

Main Features synthetic fibers / film / UV treated

Other Notes generic olefin / olefin is a low cost fiber / made from solution / ultraviolet resistant





Thank You for Everything

