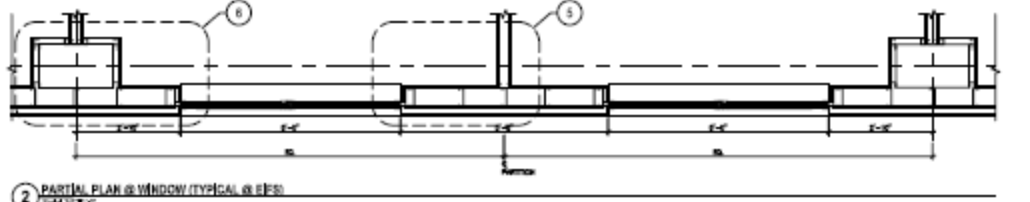
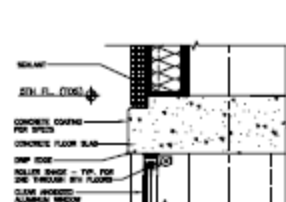
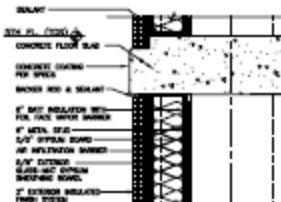


11 PARTIAL WALL SECTION (TYPICAL @ EFS)  
SCALE: 1/4" = 1'-0"

7 PARTIAL WALL SECTION (TYPICAL @ EFS)  
SCALE: 1/4" = 1'-0"

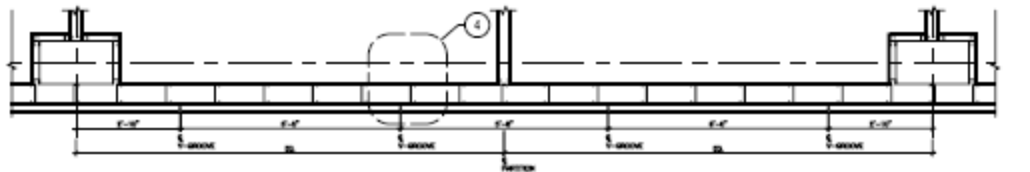
1 PARTIAL ELEVATION (TYPICAL @ EFS)  
SCALE: 1/4" = 1'-0"



12 WALL SECTION DETAIL (TYPICAL @ EFS)  
SCALE: 1/4" = 1'-0"

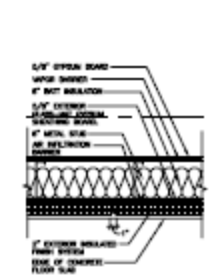
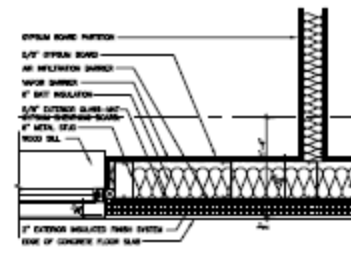
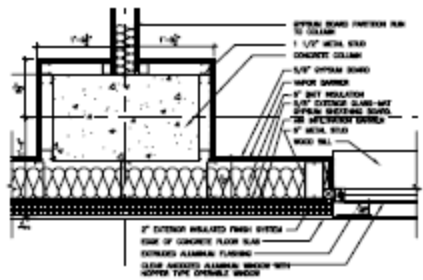
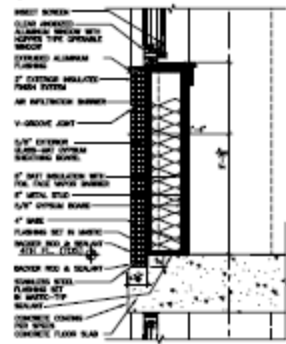
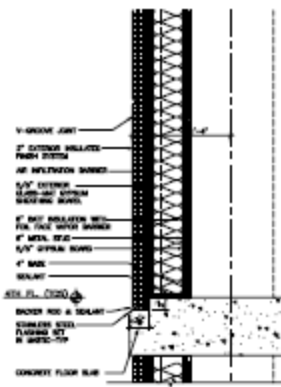
8 WALL SECTION DETAIL (TYPICAL @ EFS)  
SCALE: 1/4" = 1'-0"

2 PARTIAL PLAN @ WINDOW (TYPICAL @ EFS)  
SCALE: 1/4" = 1'-0"



9 WALL SECTION DETAIL (TYPICAL @ EFS)  
SCALE: 1/4" = 1'-0"

3 PARTIAL PLAN @ BELOW WINDOW (TYPICAL @ EFS)  
SCALE: 1/4" = 1'-0"



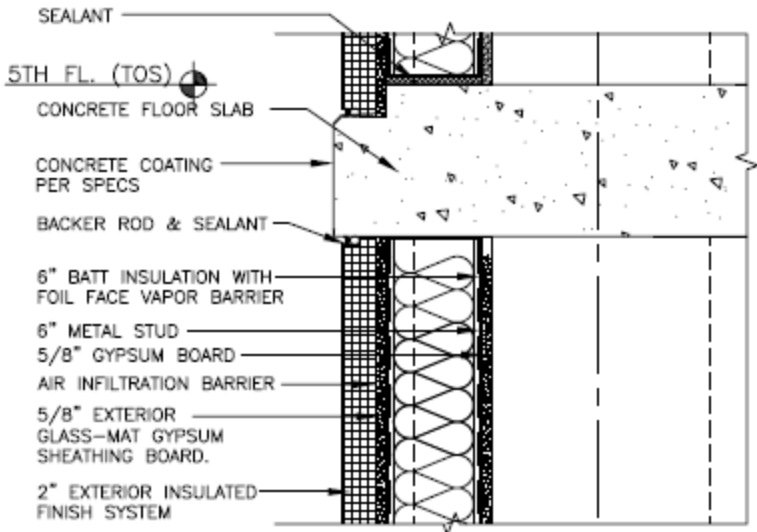
13 WALL SECTION DETAIL (TYPICAL @ EFS)  
SCALE: 1/4" = 1'-0"

10 WALL SECTION DETAIL (TYPICAL @ EFS)  
SCALE: 1/4" = 1'-0"

6 PLAN DETAIL (TYPICAL @ EFS)  
SCALE: 1/4" = 1'-0"

5 PLAN DETAIL (TYPICAL @ EFS)  
SCALE: 1/4" = 1'-0"

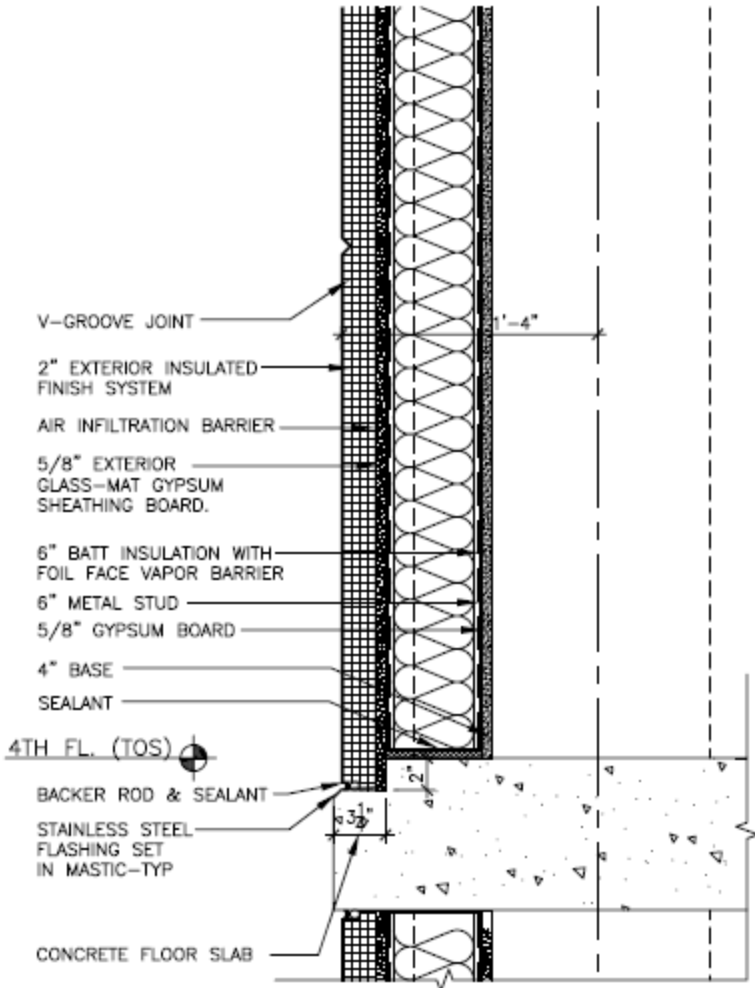
4 PLAN DETAIL (TYPICAL @ EFS)  
SCALE: 1/4" = 1'-0"



12

**WALL SECTION DETAIL (TYPICAL @ EIFS)**

Scale: 1 1/2"=1'-0"



V-GROOVE JOINT

2" EXTERIOR INSULATED  
FINISH SYSTEM

AIR INFILTRATION BARRIER

5/8" EXTERIOR  
GLASS-MAT GYPSUM  
SHEATHING BOARD.

6" BATT INSULATION WITH  
FOIL FACE VAPOR BARRIER

6" METAL STUD

5/8" GYPSUM BOARD

4" BASE

SEALANT

4TH FL. (TOS)

BACKER ROD & SEALANT

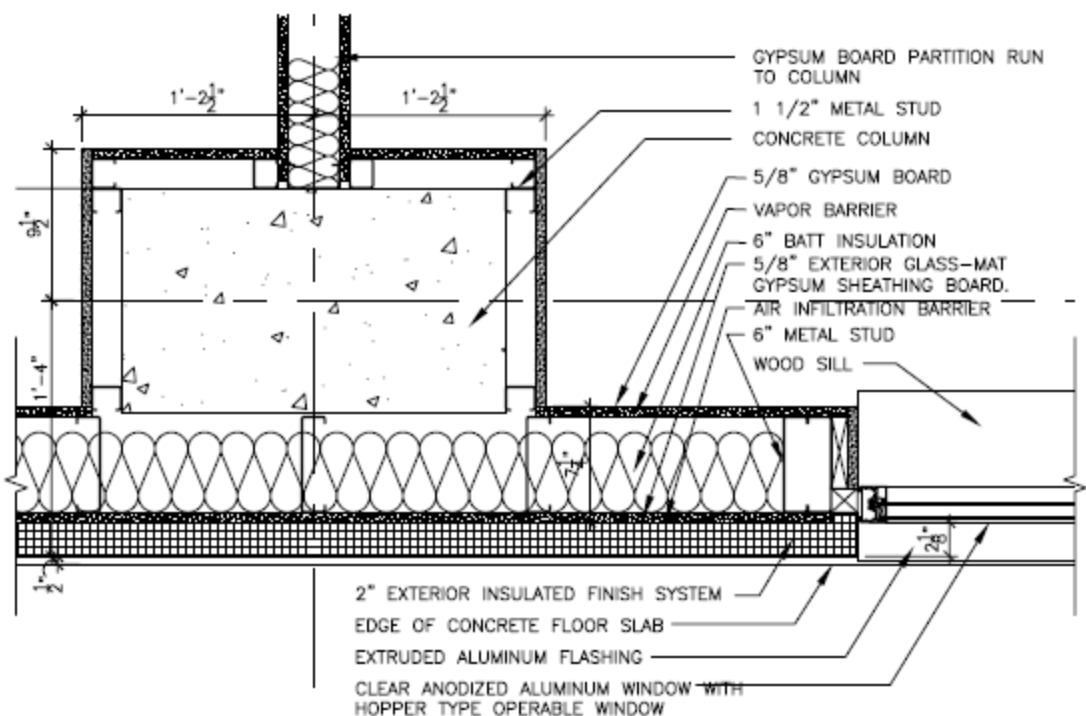
STAINLESS STEEL  
FLASHING SET  
IN MASTIC-TYP

CONCRETE FLOOR SLAB

13

**WALL SECTION DETAIL (TYPICAL @ EIFS)**

Scale: 1 1/2"=1'-0"



6

**PLAN DETAIL (TYPICAL @ EIFS)**

Scale: 1 1/2"=1'-0"

5/8" GYPSUM BOARD

VAPOR BARRIER

6" BATT INSULATION

5/8" EXTERIOR  
GLASS-MAT GYPSUM  
SHEATHING BOARD.

6" METAL STUD

AIR INFILTRATION  
BARRIER

2" EXTERIOR INSULATED  
FINISH SYSTEM

EDGE OF CONCRETE  
FLOOR SLAB



1"

4

## PLAN DETAIL (TYPICAL V-GROOVE)

Scale: 1 1/2" = 1'-0"