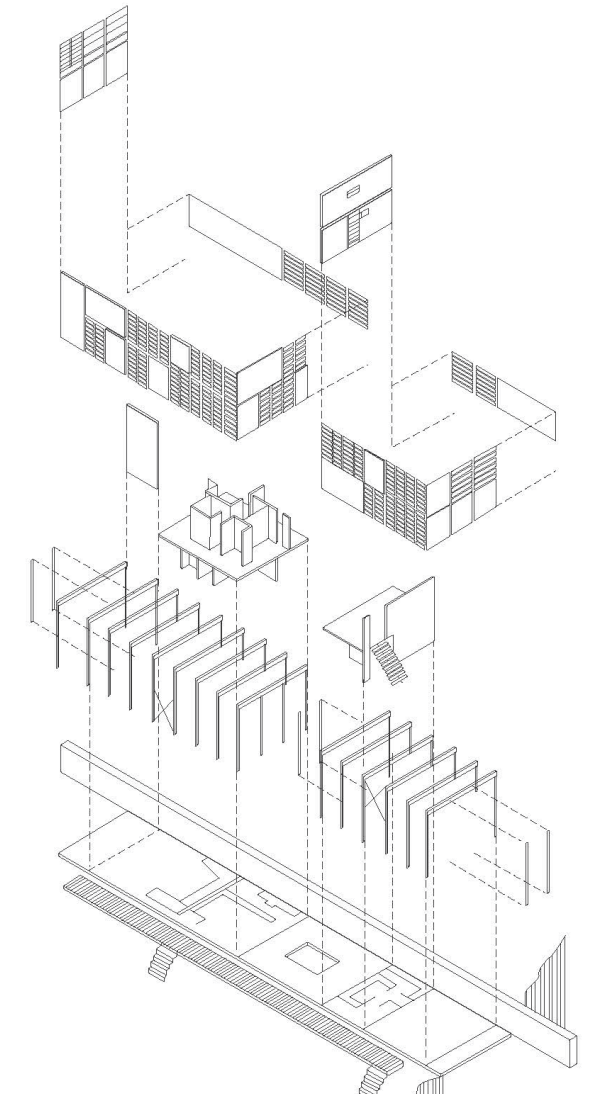
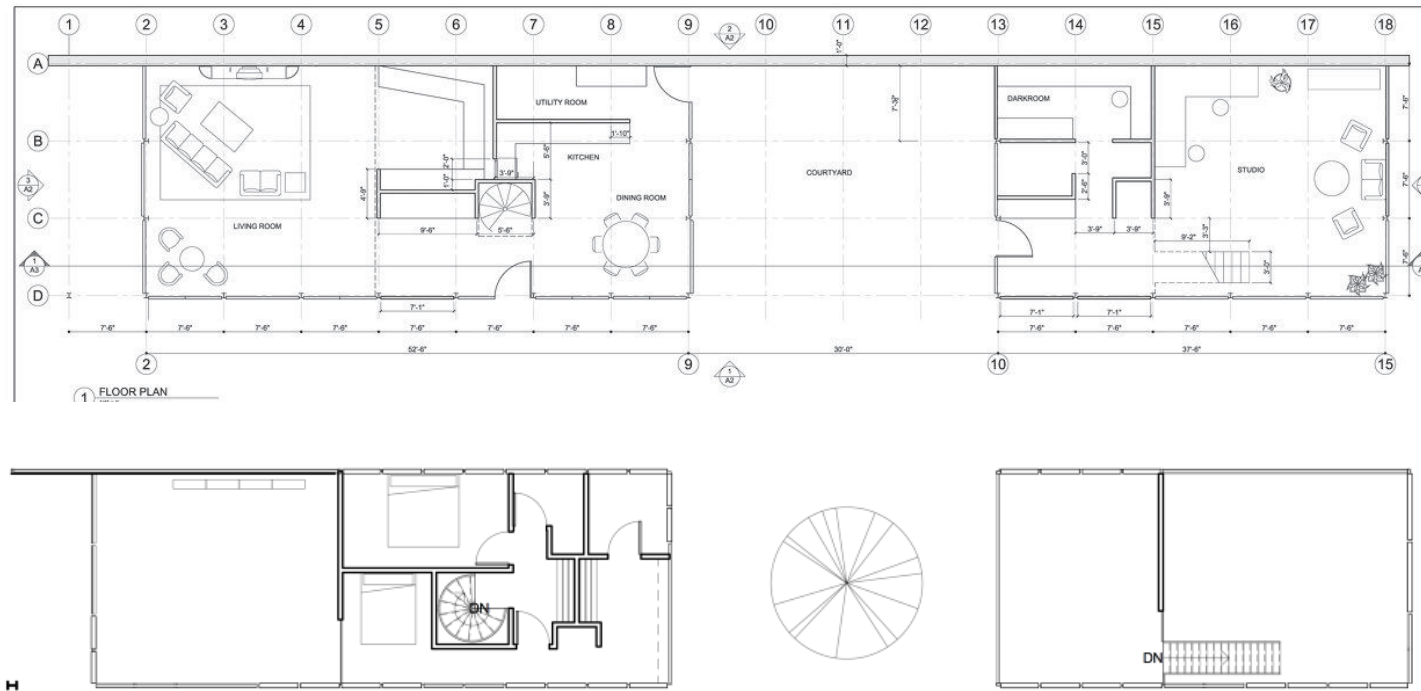




The Eames House, also known as Case Study House No. 8, is a landmark of mid-20th century modern architecture located in the Pacific Palisades neighborhood of Los Angeles. It was designed and constructed in 1949 by husband-and-wife Charles and Ray Eames to serve as their home and studio. This house is quite the importance piece of architecture, its a house that excels in the use of parts ordered from a catalogue, then assembled on site with a direct lack of fussines. It appears totally contemporary, completely in tune with how we live now. Quite the archivement for a 70 year old house. Somehow the house manages to feel abstract but it also is quite simple. The eames referenced on Bauhaus design but was a major departure from the austerity of that movement. Composed of dual two-story rectangular boxes bathed in California sunshine, the form followed its intended function: to provide shelter from the elements while living among them.



EAMES HOUSE

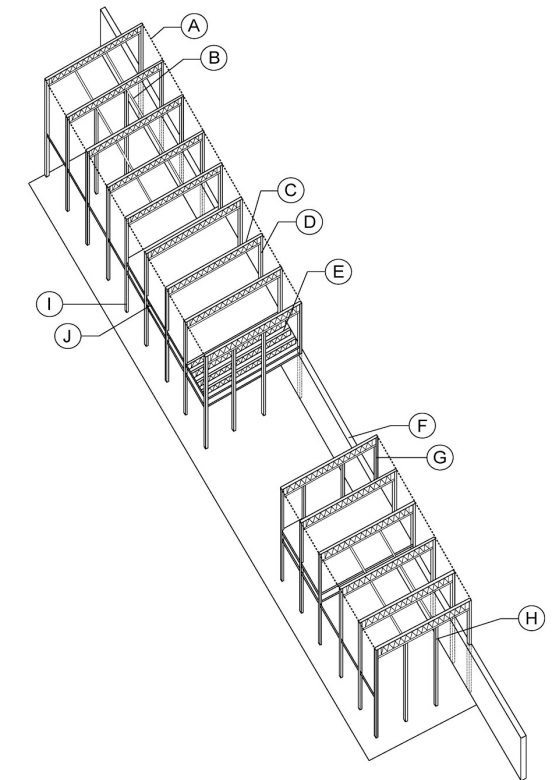
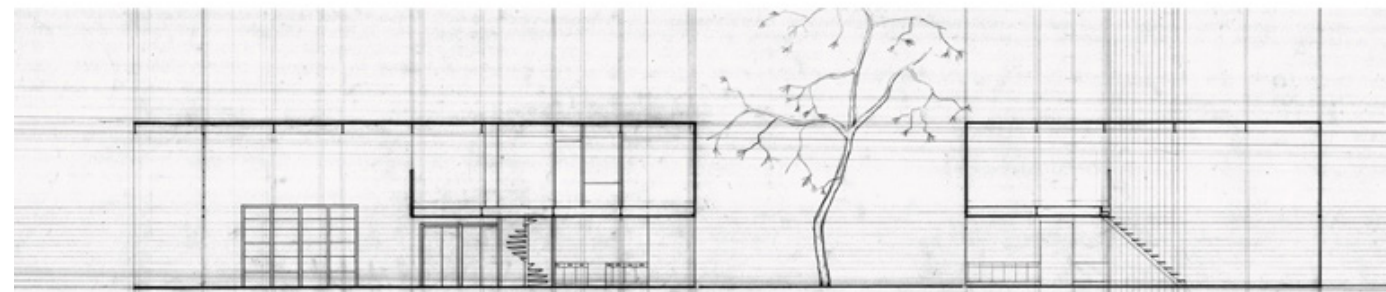
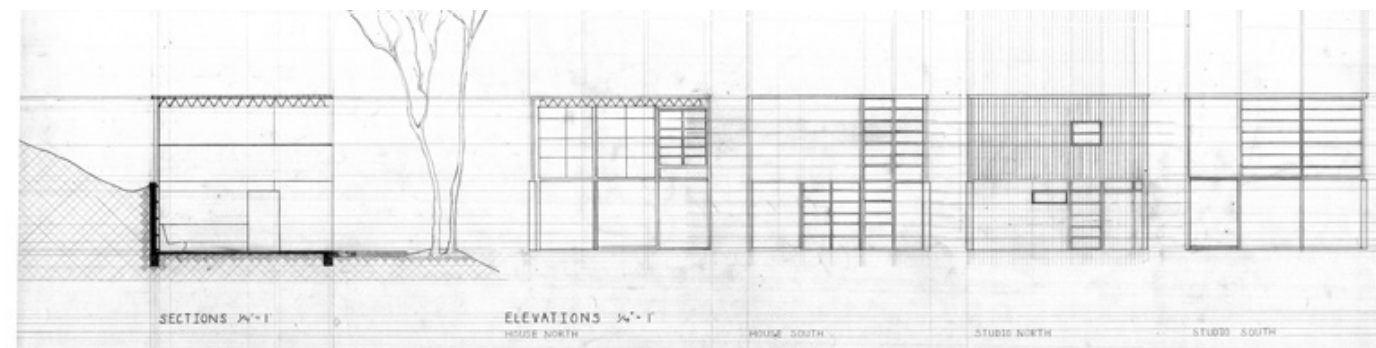
Charles Eames

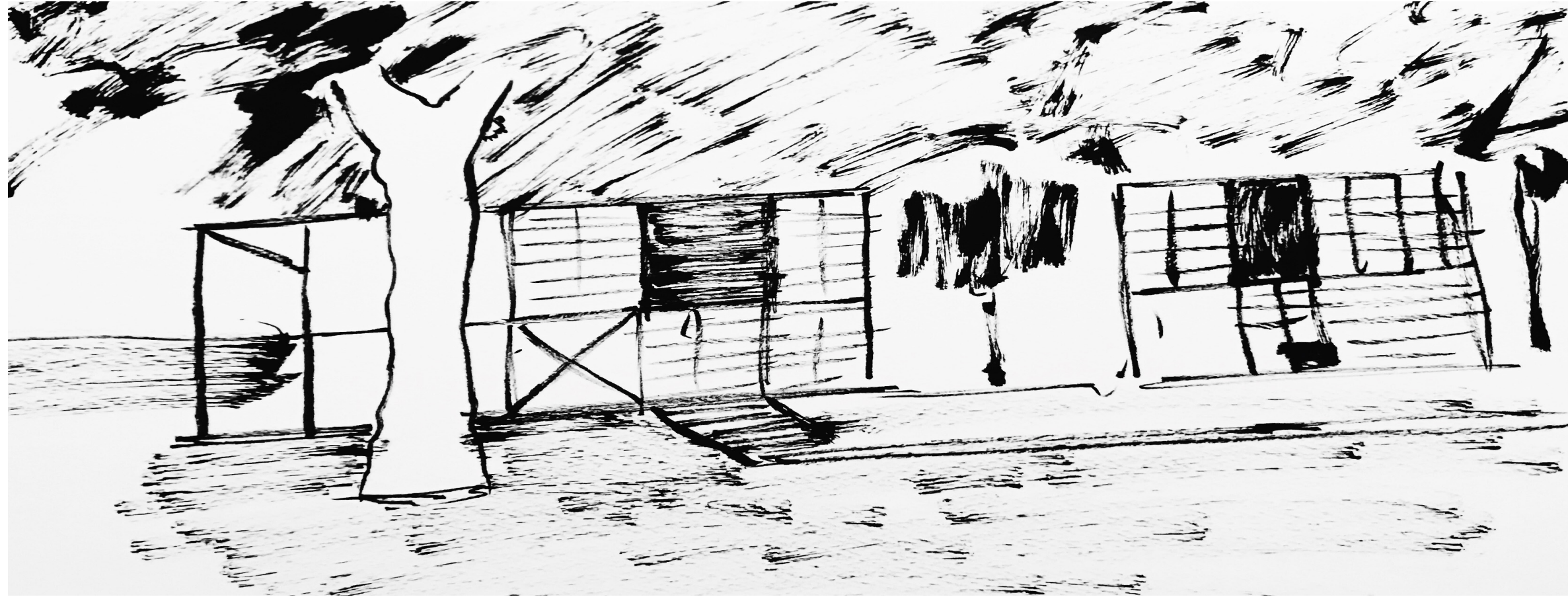


Ray Eames



Eero Saarinen







The interiors echo Frank Lloyd Wright's vision of confined entrances that lead to voluminous areas. The Eames House also takes the concept of open floor plans to new heights with a two-story atrium, a design element now de rigueur in contemporary homes.



The Eameses are mostly known for their furniture design and the Eames House is their only architectural project. They designed all the furniture being that their profession and it's what they're best at.



The western end has a wide overhang to cut down glare and heat, and its southern face, rising on a bank above the long meadow, is a grid of steel, glass doors, windows, brightly colored panels and X-braces.



A spiral staircase leads to second-floor bedrooms, and in the living room a ladder reaches toward the corrugated steel ceiling. From the top rungs, Charles would rearrange hanging light fixtures and string paintings face down, parallel to the floor.



The whole house is also very human scale and it feels very welcoming and warm and as said by a visitor "After visiting this house I will never say modern can't be warm".