

Learning Places Fall 2017

Library / Archive REPORT

New York Public Library



STUDENT NAME : Huang Jinchang

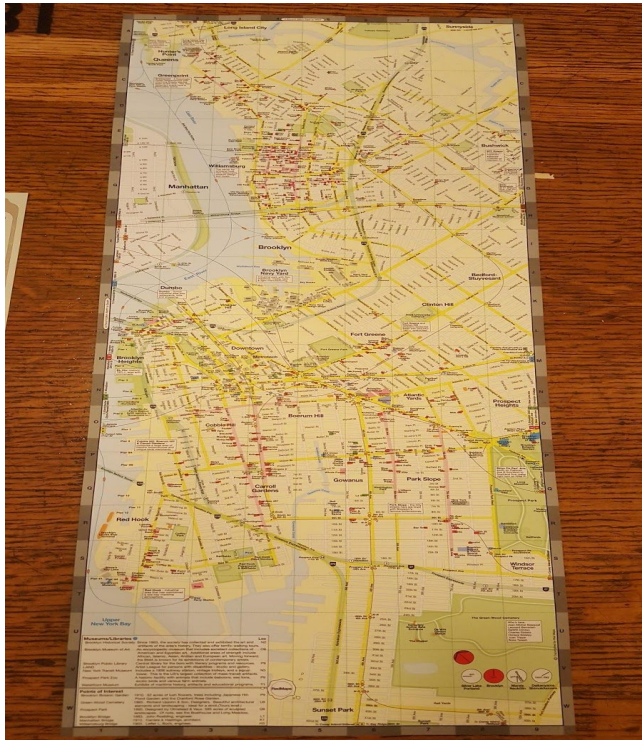
10.24.2017

INTRODUCTION

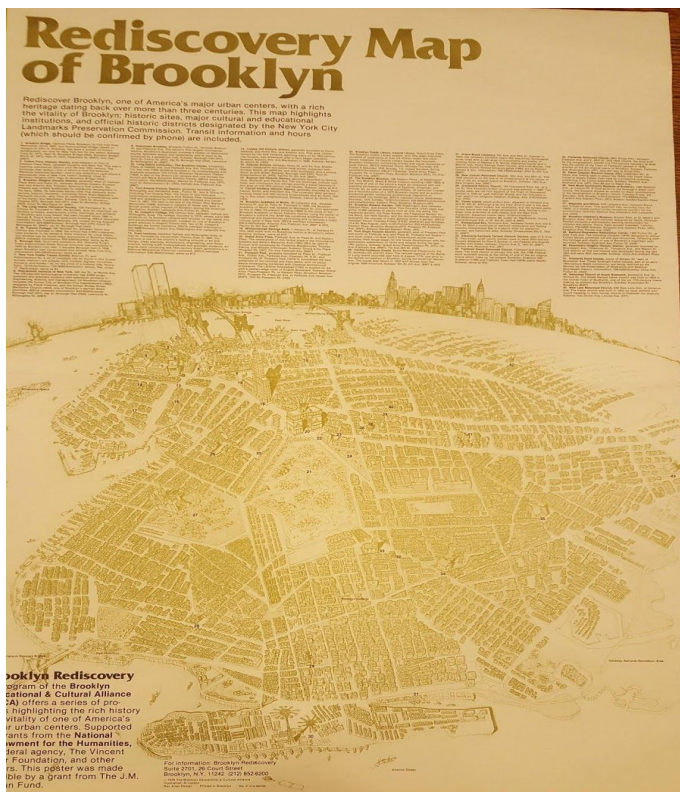
The New York Public Library is located in Manhattan in Bryant park. The library itself is a huge structure with many rooms and purposes for people to scout for information. We met inside the library and was led to the second floor by the librarian to a map room showing sources based on the Gowanus area.

SITE OBSERVATIONS

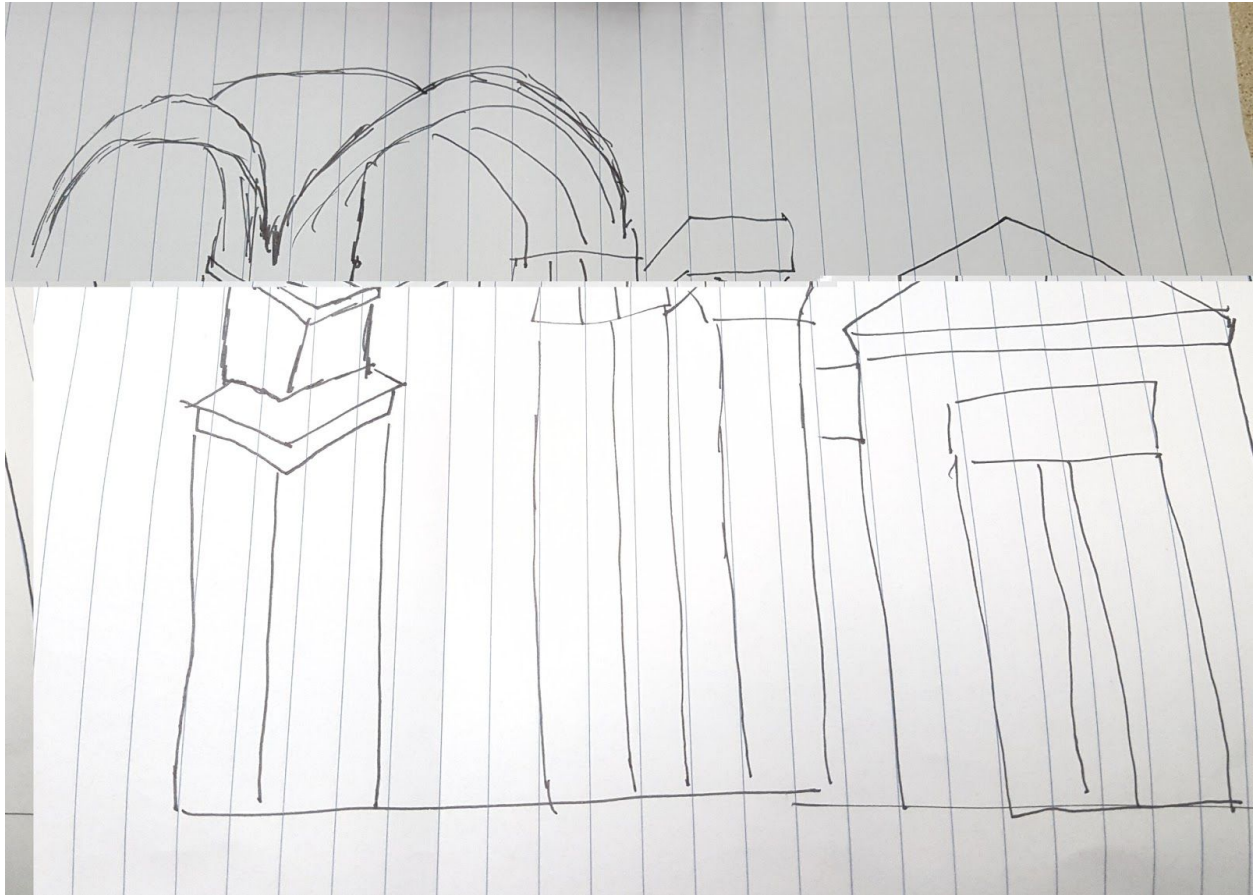
(include photographic documentation and visual notes—at least 2 photographs 1 sketch required)



A Tourist map of Brooklyn used to locate stores and places around Brooklyn.



A map of Brooklyn in a global perspective, 3d buildings and other significant graphics.



A sketch of the internal structure of the Library.

What is the Genius Loci, or spirit, of this place?

Since the location of the library is located in the middle of Manhattan, the place was filled with tourists and visitors from different boroughs, I would say that the genius loci of the place would be considered lively.

What kind of archive or library is this? What kinds of materials / sources does this place collect?

The library is filled with materials of all sorts so I'm assuming that the library holds materials from ancient books to really old maps.

Who might use this collection and for what purpose?

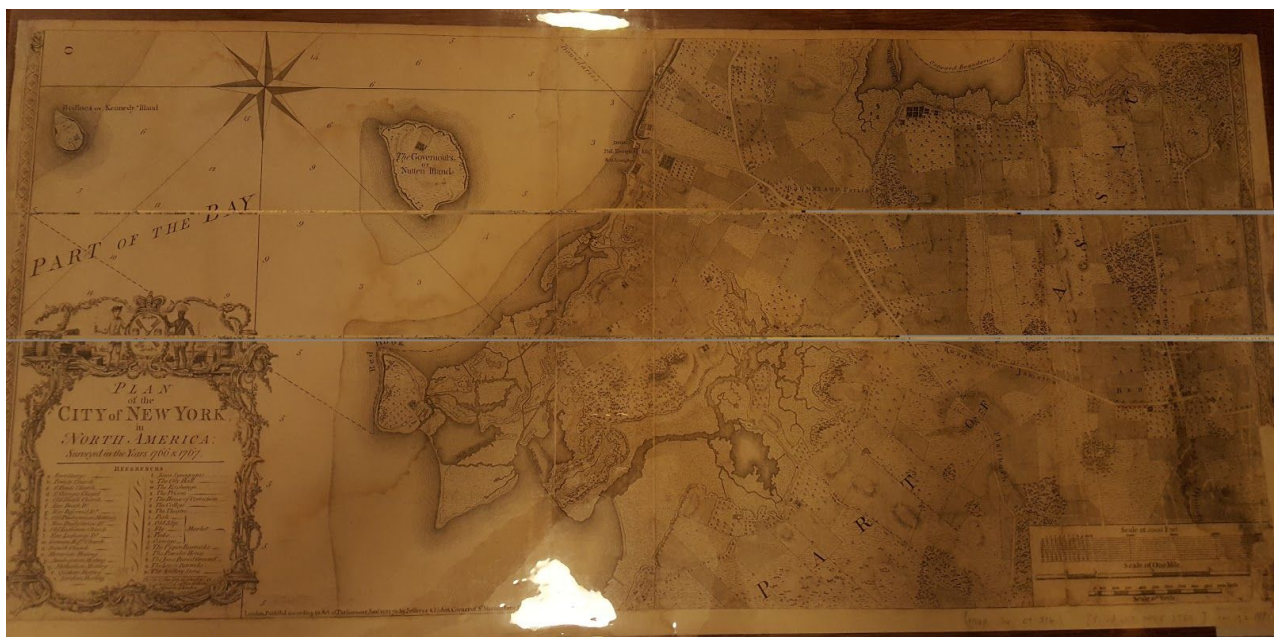
People who are doing research or want to learn more about history might want to use the materials from the library.

Are there any special rules for using or accessing material?

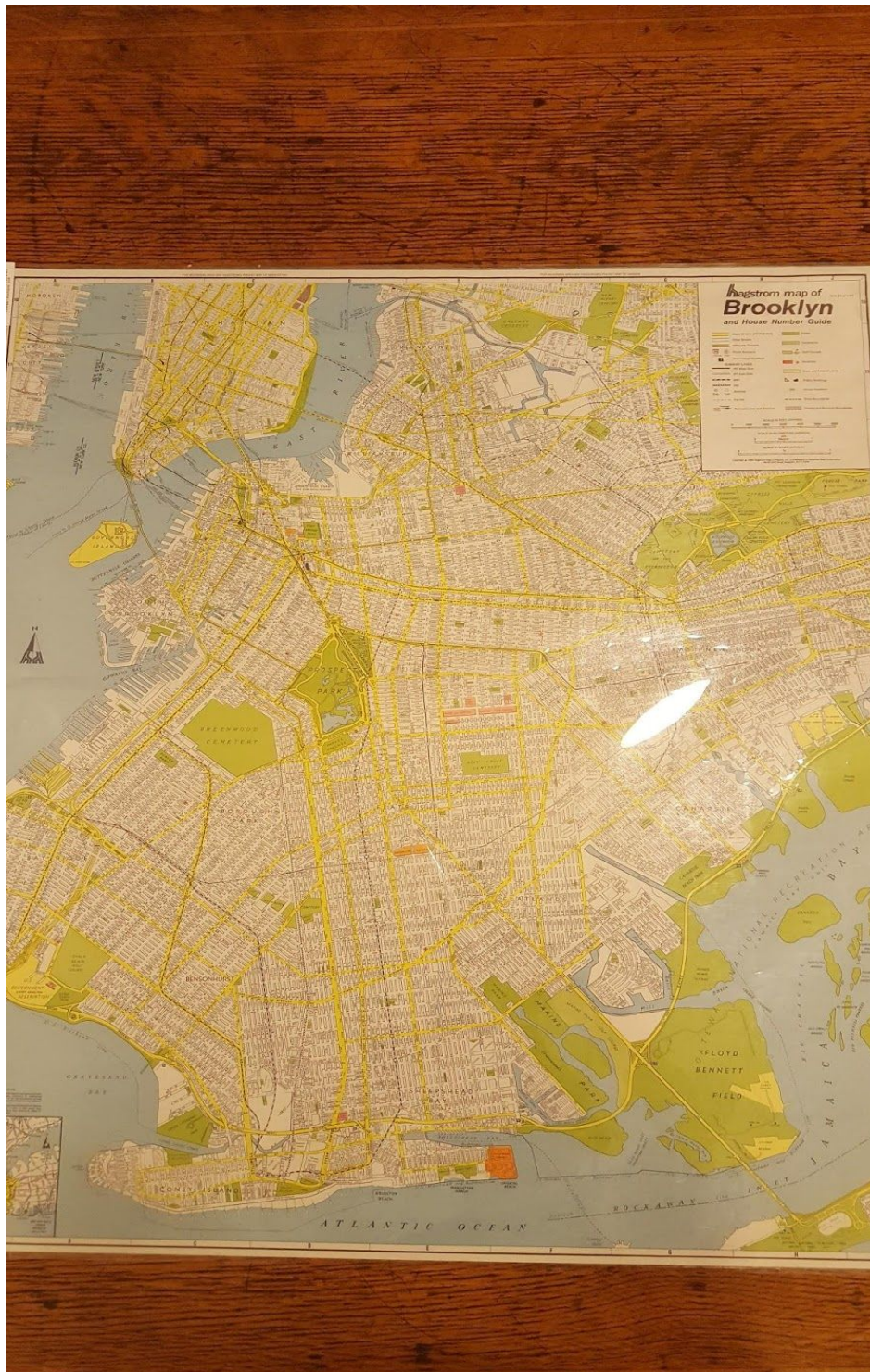
Some materials must be reserved or needs to be informed ahead of time before it can be accessed.

SOURCE ANALYSIS

(2 citations of sources found and a brief analysis of each source—photos optional)



Jeffrey & Fader Corner.(1766-1767).[Plan of the City of New York in North America]. New York Public Library Map Archives.



Hagstorm.(1938).[Hagstorm map of Brooklyn and House Number Guide].New York Public Library Map Archives.

CITATION for ARCHIVAL SOURCE #1 (consult this [website](#) for help with citations)

1. What is this source and what is its purpose?

This map piece is used to show us how the Gowanus looked like before it was altered by humans. It showed the natural formation of the swamp before it became a man used canal. While the true purpose of this map was not told by the librarian, the map itself is still very unique as it gives us a better understanding of the canal.

2. Who created it and who was it created for?

The map was most likely created by map creators, the map creators are listed but the true purpose of its creation remains unknown for me.

3. What does this source tell us about the place we are studying? What themes or subtopics does it relate to?

The map definitely helps us understand the Gowanus canal a bit better since we were given the structure of the canal before it was formed by the hands of humans.

4. How might it be integrated into a research project? What question could it be used to help answer?

I can incorporate the map into the research by comparing the canal of its current state to its original state.

CITATION for ARCHIVAL SOURCE #2 (consult this [website](#) for help with citations)

1. What is this source and what is its purpose?

The source is a general map of Brooklyn which shows basic information such as routes and locations of reputable locations.

2. Who created it and who was it created for?

The map is created for map users or anyone that is interested in learning more about the places of Brooklyn.

3. What does this source tell us about the place we are studying? What themes or subtopics does

it relate to?

Since the map shows general information, the only thing that helps us with the location we are currently studying is probably its location and the places such as streets that are located within the area.

4. How might it be integrated into a research project? What question could it be used to help answer?

We can use this map and do comparisons since the map itself gives much info about the areas of Brooklyn.

GENERAL NOTES:

- To gain sources, we must request for the source in advance.
- There are many sources relating to the gowanus canal and leading to its originality.
- Many maps are available for research.
- Most of the maps are last of it's kind, the majority of the maps were laminated with plastic to prevent damage.
- The new york public library looks nice in the outside but on the inside looks very old with outdated furniture.

QUESTIONS for Further RESEARCH

1. How accessible are the materials in the New York Public library?
2. Does the library have maps that specifically state where green infrastructures are located?
3. Does the library contain information of the sea life in the canal before it became polluted?