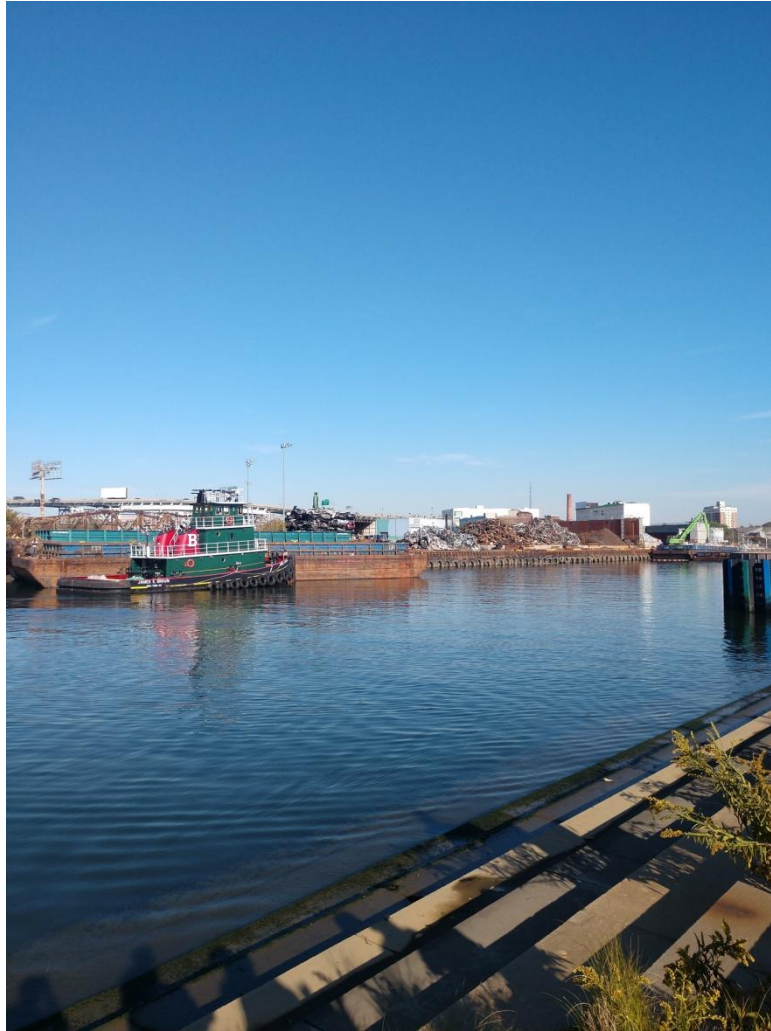


Learning Places Summer 2019

SITE REPORT #2

name of site report

NAMING PROTOCOL. When saving and posting your site reports on OpenLab, please follow the following format: SiteReport#.LastnameFirstname. Here's an example: SiteReport2.SwiftChristopher.



Select a meaningful image to that captures your perception of the site we visited and provide a caption explaining what the image is.

STUDENT NAME: Rainby Kurian

SITE OBSERVATIONS

1. What are some general observations about the character of this place? What does it remind you of? How does it make you feel?

The first thing I noticed in Newton Creek was the architectural design of the entrance, it looked like the arch of a boat and according to Prof. Spellane's lecture there was a shipping industry functioned between 1860-1960s. The spherical space was also an amazing structure which reflects the sound as echoes when we speak at the center of that space. The place was very clean and it have an effective passage for the water to drain to sewage, I would have been very happy to walk through the pathway if there was no bad smell from sewage or from the plant near it.

2. Historically, what are some of the important developments that have created the current environmental situation at Newtown Creek area. Refer not only to the reading and Prof. Spellane's lecture, but also what you learned on the Newtown Creek Alliance tour (hint... estuaries, for instance)?

During the times of native people, the entire place was grassland and now it has transformed into a commercial area where we can only see commercial industries, waste water treatment plants, contaminated water and metal disintegrated yards. The water is so bad that they had to put up warning signs and currently the waste water treatment plants are cleaning up the water but still when it rains the sewage from all over the city runs off to the canals in creek.

3. In what ways is the natural environment contained or shaped by the architecture of the Newtown Creek Nature Walk? In what ways is the natural world repossessing, interacting with, or invading spaces that have been over-polluted or industrialized?

The natural world is contained by building structures, industrial plants and concrete nature walk pathway. Even though most of the space is contained by architectural foundations yet some places we can see trees and salt marsh grass growing. Nature is allowed to take over in certain areas; especially on the steps there are triangle cuts for the grass to grow and for the mud snails.

4. Discuss the program of the nature walk. How are people meant to interact with one another and with the environment?

In my opinion the program of nature walk is not just a place for people to walk and spend time with the nature; there are also historic and scientific aspects in which people can explore. It's an informative place for people to directly watch wastewater treatment plants and its components.

5. If you were to stage a performative intervention in a *specific* site (i.e., a single structural aspect of the walk or industrial remains) where would you stage it and why (how does the environment add meaning to the performance)?

In Newtown Creek I believe the best place for a stage performative intervention is the area near the canal and 7 stone circles. At this location there is enough space for people to gather around and people can see the performance from the Queens side across the canal.

6. What message would your performance convey and who needs to hear this message?

A perfect message that should convey by performance is something related to the issue which concerning the contaminated wastewater in the Newtown Creek canal. This performance can be either a street act which focuses on toxicity of the water or need for cleanup process or even a music event which spread the same message to people. The authorities and residents of the NYC should hear and know about environmental issues in the Newtown Creek area.

QUESTIONS for FURTHER RESEARCH. These should follow directly from your analysis section and be complex and specific enough to serve as the basis of a research project.

Questions might relate to architectural or environmental observations, socio-political problems and/or solutions, demography, history, zoning, civic processes, performance strategy, etc.

1. Question?

Is there any ways to prevent metal toxicity of water from the yard?

2. Question?

What are some of the alternative ways to dispose the byproducts from the waste water treatment plants?

3. Question?

What is the health-related issues Newtown Creek canals possess to the community and when authorities going to resolve it?

FURTHER RESEARCH

Choose and **revise** one of your research questions for further research. Refine your question following from examples that we've discussed in class.

Revised Research Question:

What is the health-related issues Newtown Creek canals possess to the community and when authorities going to resolve it?

Find and cite 2 sources that address your question in [MLA format](#). Respond to the questions below.

CITATION 1:

Public Health Assessment . 24 Feb. 2014,
https://www.health.ny.gov/environmental/investigations/newtown/docs/pha_final.pdf.

Why did you select this source? How does it address all or part of your research question?

The Newtown creek is not just a commercial center, the residents uses the Newtown Creek nature walk as a recreational center as well for fishing and boating. It is very important for the people to know the health risks of direct contact with the contaminated water and fishes in the canal. The New York State Department of Health (DOH) and the Agency for Toxic Substances and Disease Registry (ATSDR) released a public health assessment article of Newtown Creek to provide information's of bacteria found in the water and other contaminated chemicals in the canal. The reason why I choose this article is because it covers most of the answer to my research question. They have collected samples from four different locations of the canal and found high levels of bacterial activity in the water. There are many diseases that could spread from contaminated fecal water and it is worse on rainy days.

Is the source credible? Why or why not?

Yes, I believe this source is credible because this is an article released by the New York State Department of Health (DOH) and the Agency for Toxic Substances and Disease Registry. Research evidence found by Environmental protection agency are also included in the article.

CITATION 2:

Enman, Scott. *Newtown Creek's Cleanup Could Begin 5 Years Ahead of Schedule*. 20 Sept. 2019,
<https://brooklyneagle.com/articles/2019/09/20/newtown-creeks-cleanup-could-begin-5-years-ahead-of-schedule/>.

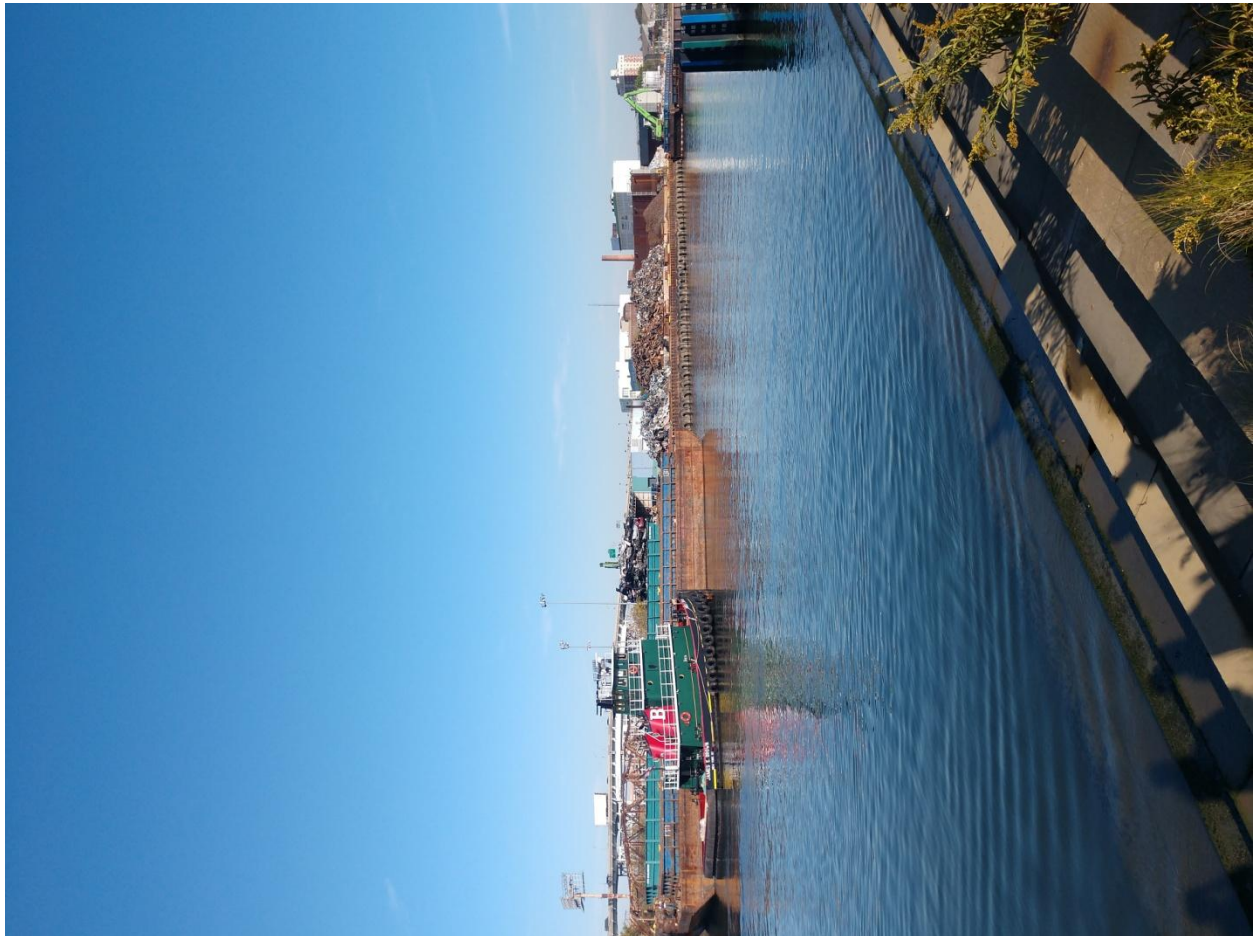
Why did you select this source? How does it address all or part of your research question?

Newtown Creek contaminated issue is very serious, and it is necessary to clean up the canals for the safety of the residents in New York City. The reason why I choose this article

is because it talks about the expected date to start the cleanup process in the canal. In a meeting the Environmental Protection Agency employees told residents that a federally funded project will start to clean up the first 2 miles of the Newtown Creek Canals. It is predicted to start by 2027 and according to Vaughn chief of EPA this is just a beginning of the future cleanup projects. Initially the lower two miles of the waterway is selected for the cleanup and the rest of the decontamination process will continue in eventually. Yes, this article answers the second part of my research question and the Environmental protection Agency Chief has announced a date to start the cleanup process.

Is the source credible? Why or why not?

Yes, I believe this source is credible because the article is posted in Brooklyn Daily Eagle and it is a Brooklyn based worldwide newspaper with a lot of readers. Since the site is located in Brooklyn Queens boarder and the newspaper primarily focuses more on covering news and events in the Brooklyn



area this source should be credible.

What further information would you need to answer your question? Where would you look for additional sources?

Important information required for my research question is what changes occurred in the Newtown Creek canals since the last public Health Assessment research. The article I found is 5 years older and I must find out recent study article or assessments conducted in Newtown Creek. These sources can be found if I contact the New York State Department of Health or Environmental Protection Agency offices and I can also refer government websites for further information.