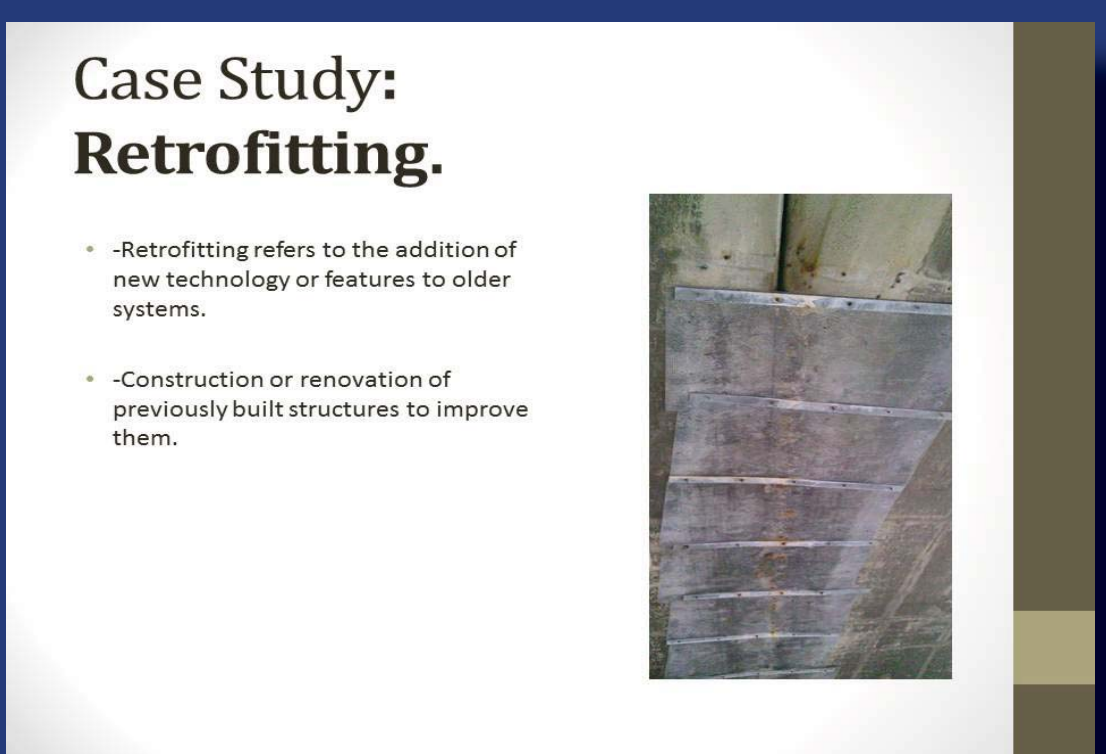
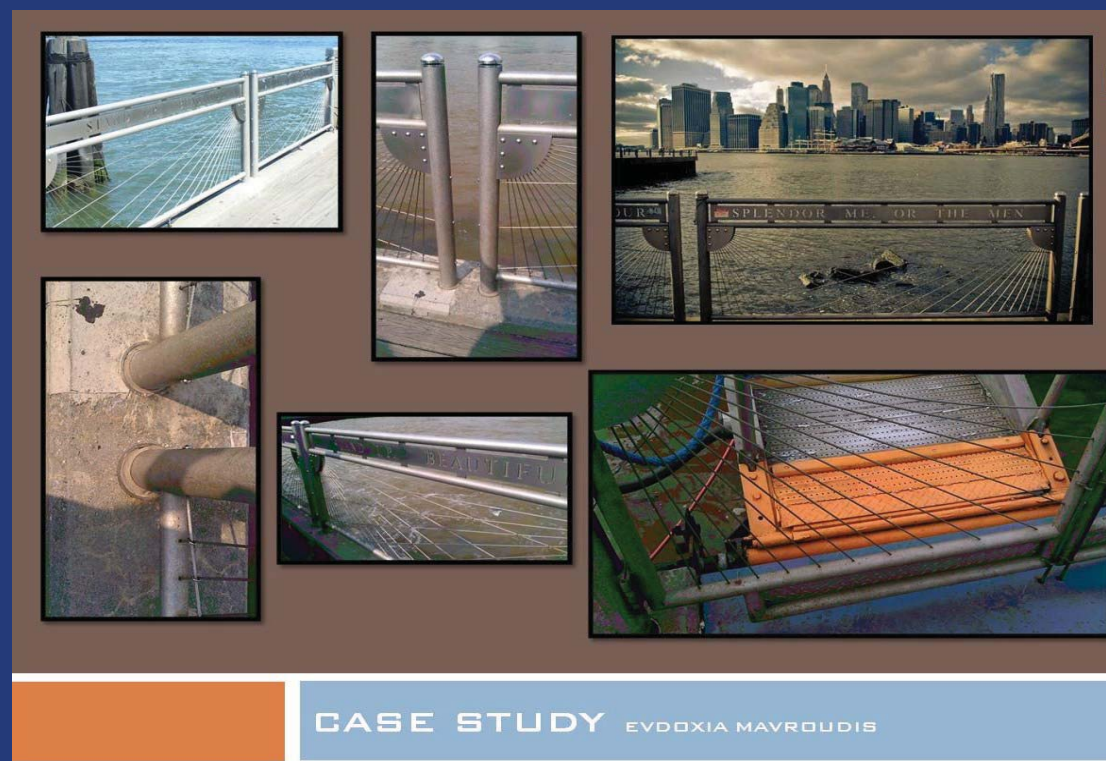
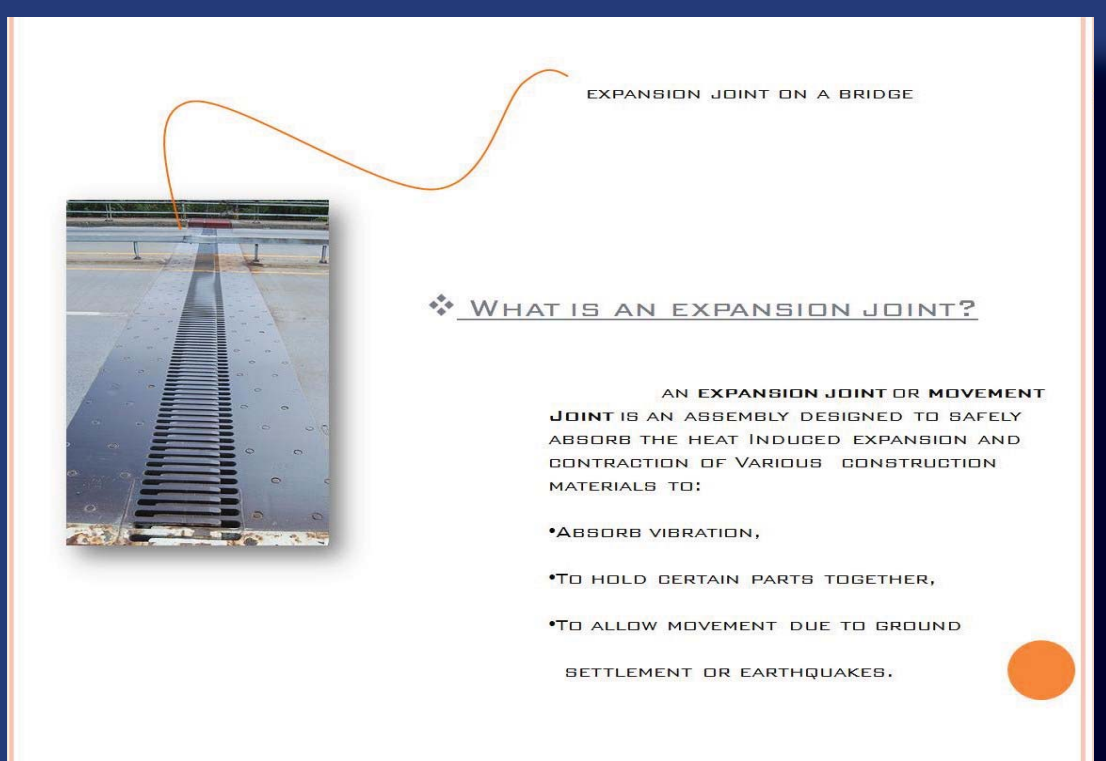
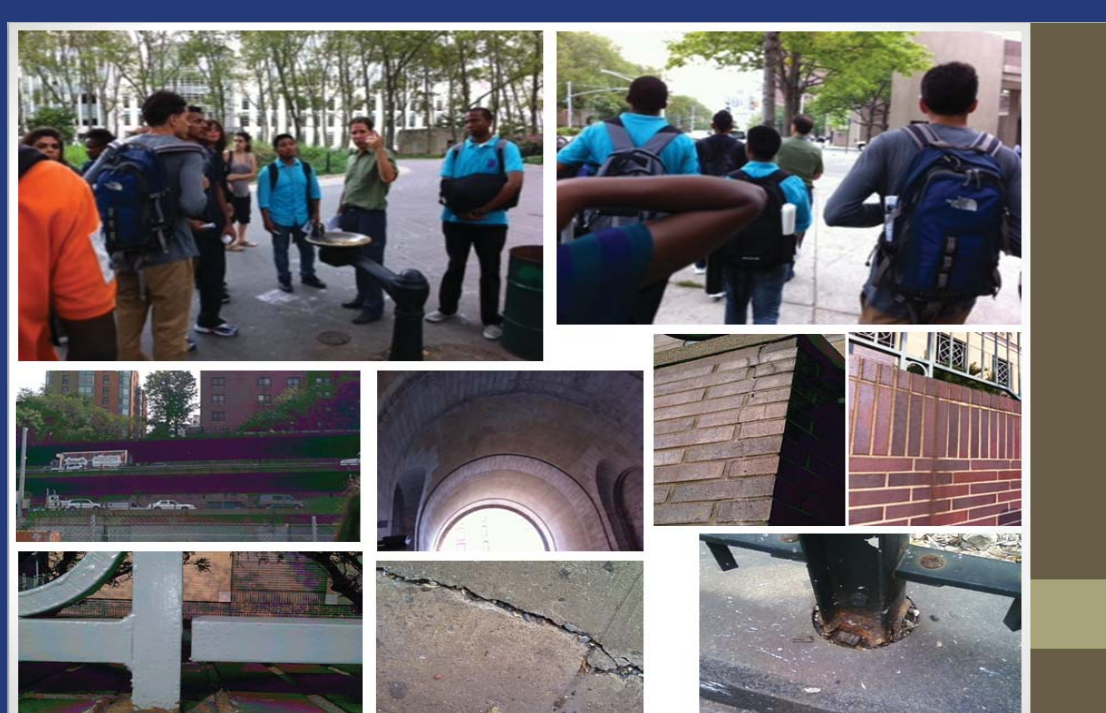
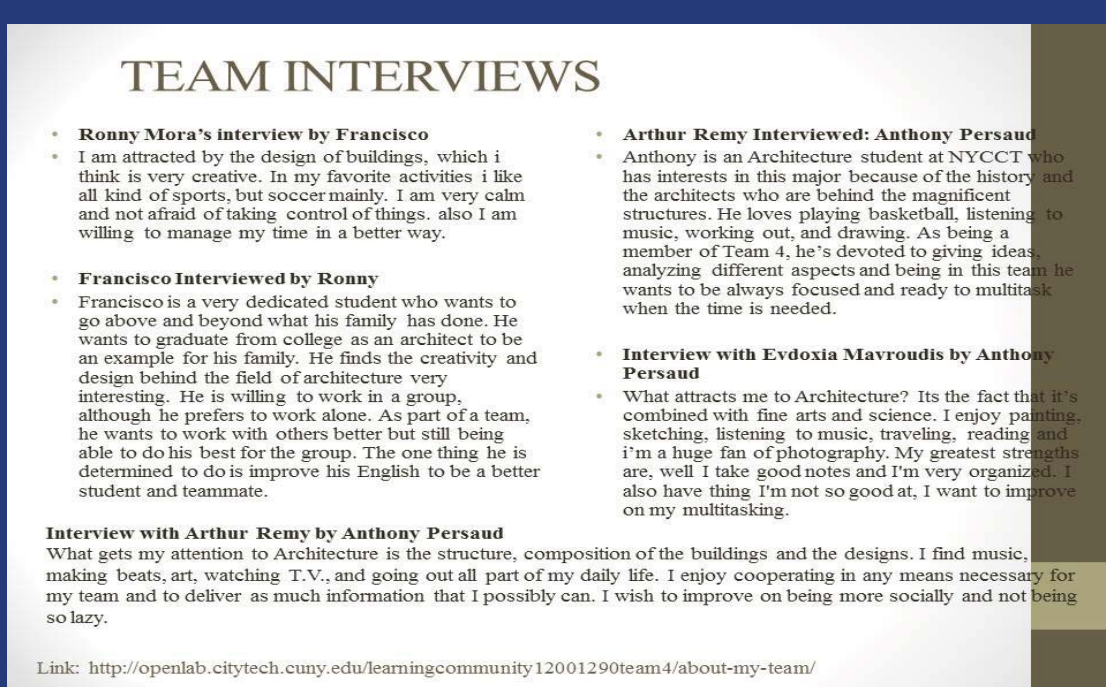
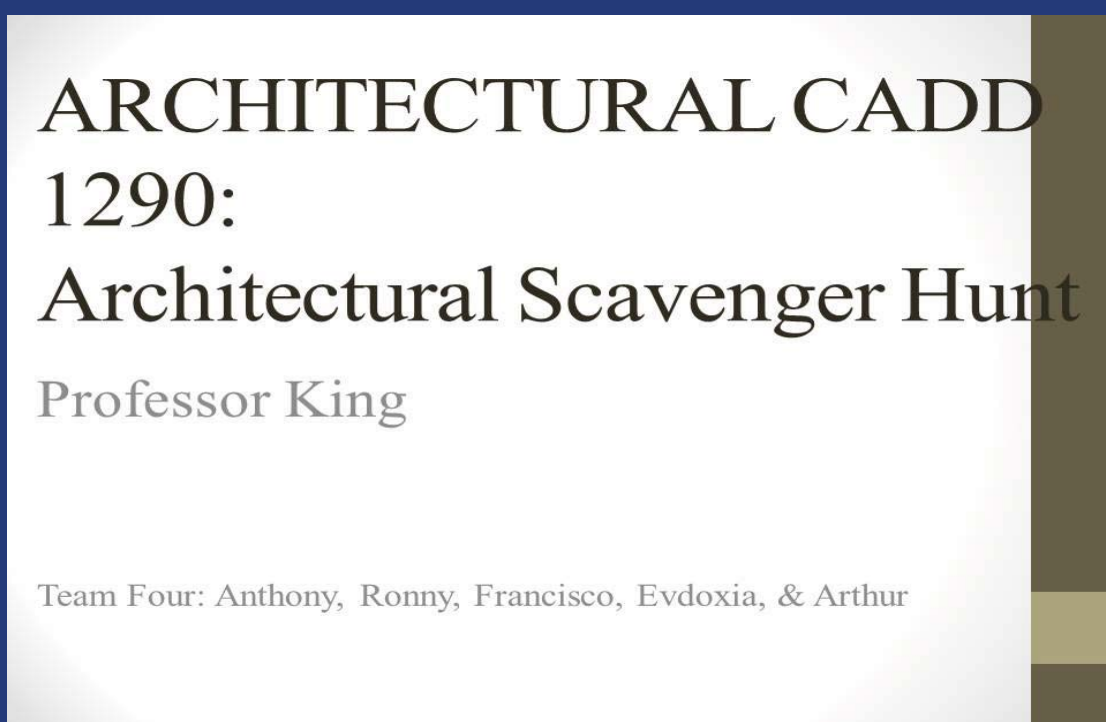


CASE STUDIES



When our class went on a Field trip to find & learn how construction works, we learned about failure in construction, movement, & expansion. Learned how to re-design or retro fit a failure, movement, & expansion in construction.

LEARNING COMMUNITY 1200-1290 - ARCHITECTURE DRAWING II & AUTO CAD.

Team 4: Anthony Persaud, Evdoxia, Ronny Mora, & Francisco.

Professor: Paul C. King

Learning Community is a great way for us to work in groups, we produce mock up drawings that allows us to talk about what we can improve, we have class discussions where everyone has an opinion & you take trips to study sites.

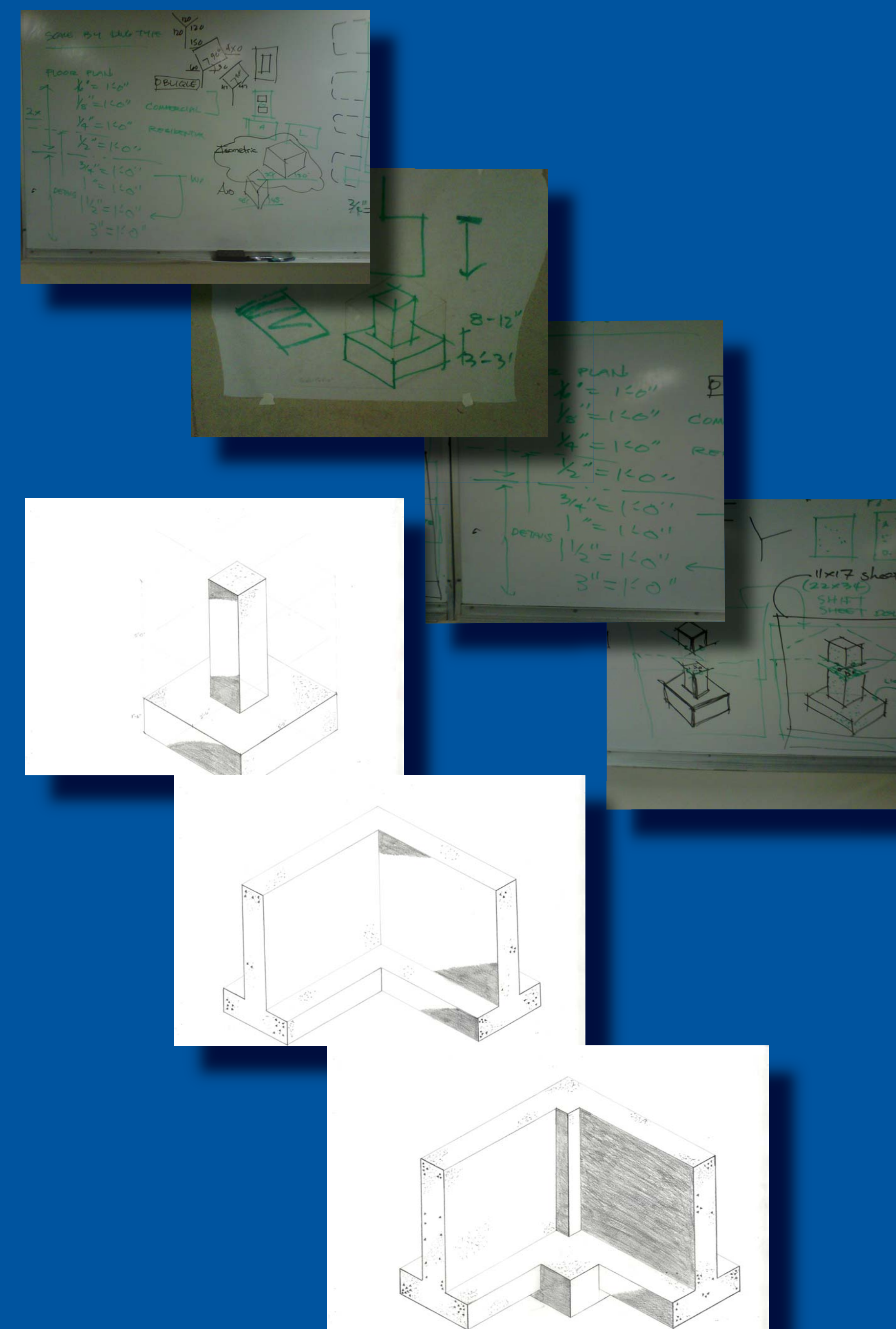
REVIT

An Assembly of the Gym from a Sectional Perspective.



Foundation Wall 12" thick, Conc. Square Columns 18"x18", Bearing Footing is 36"x12" & Column Footing 48"x48"x12". Foundation Slab is 8" thick & Floor Slab 12" thick.

HAND DRAWINGS OF OUR COLUMNS

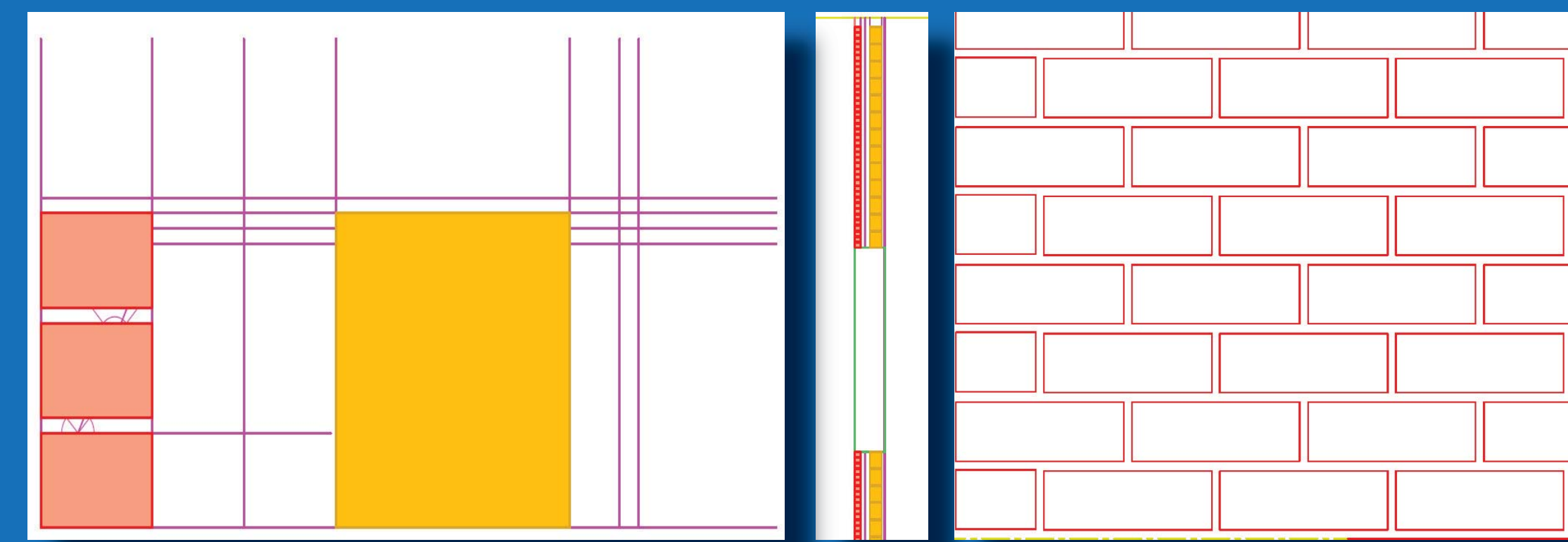


Structural Wall is 1' 7 1/2" thick, It's made up of Exterior Brick 3 5/8", Airspace 3", Rigid Insulation 3", Vapor Barrier, CMU 7 5/8", Metal Furring 1 5/8", & Gypsum Wall 5/8".

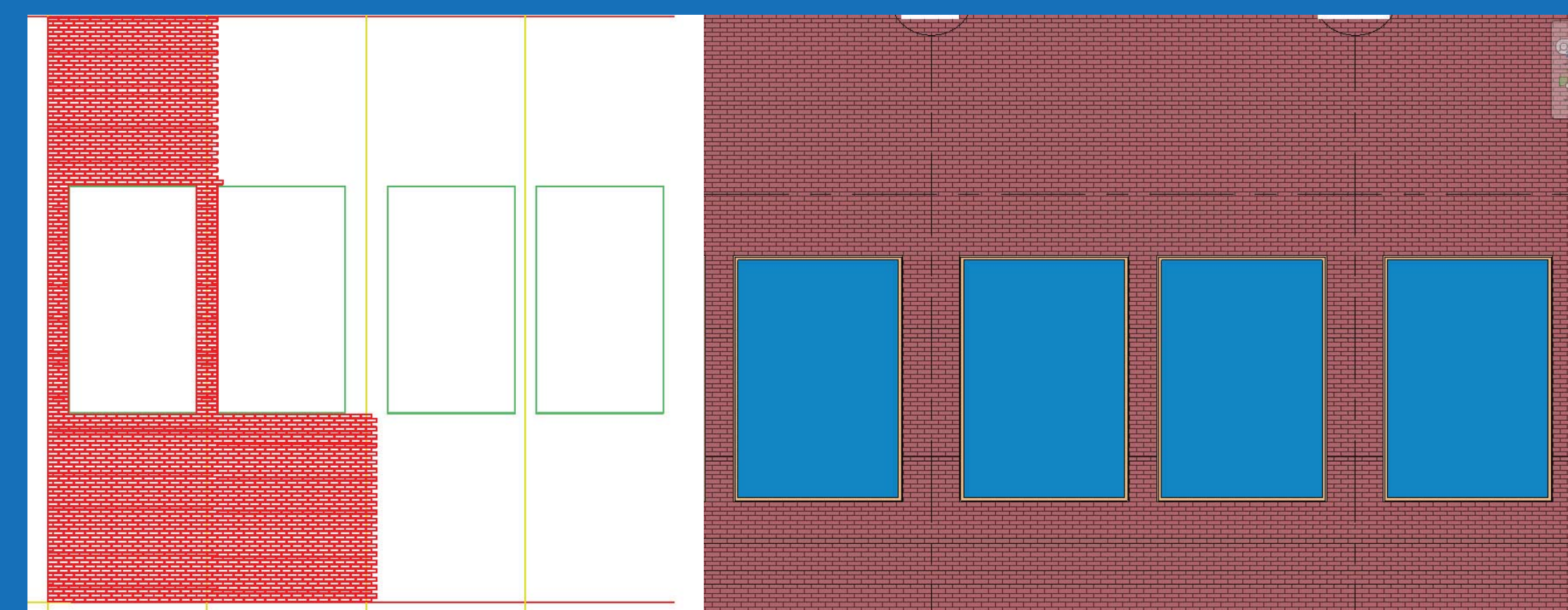
Pratt Standard Truss 12"x26" W - Flanges, Supported by Wide Flange Columns 10"x33".

Roofing 12" thick, Basic Generic Roof, Full Assembly of Gym from a sectional perspective.

AUTO CAD

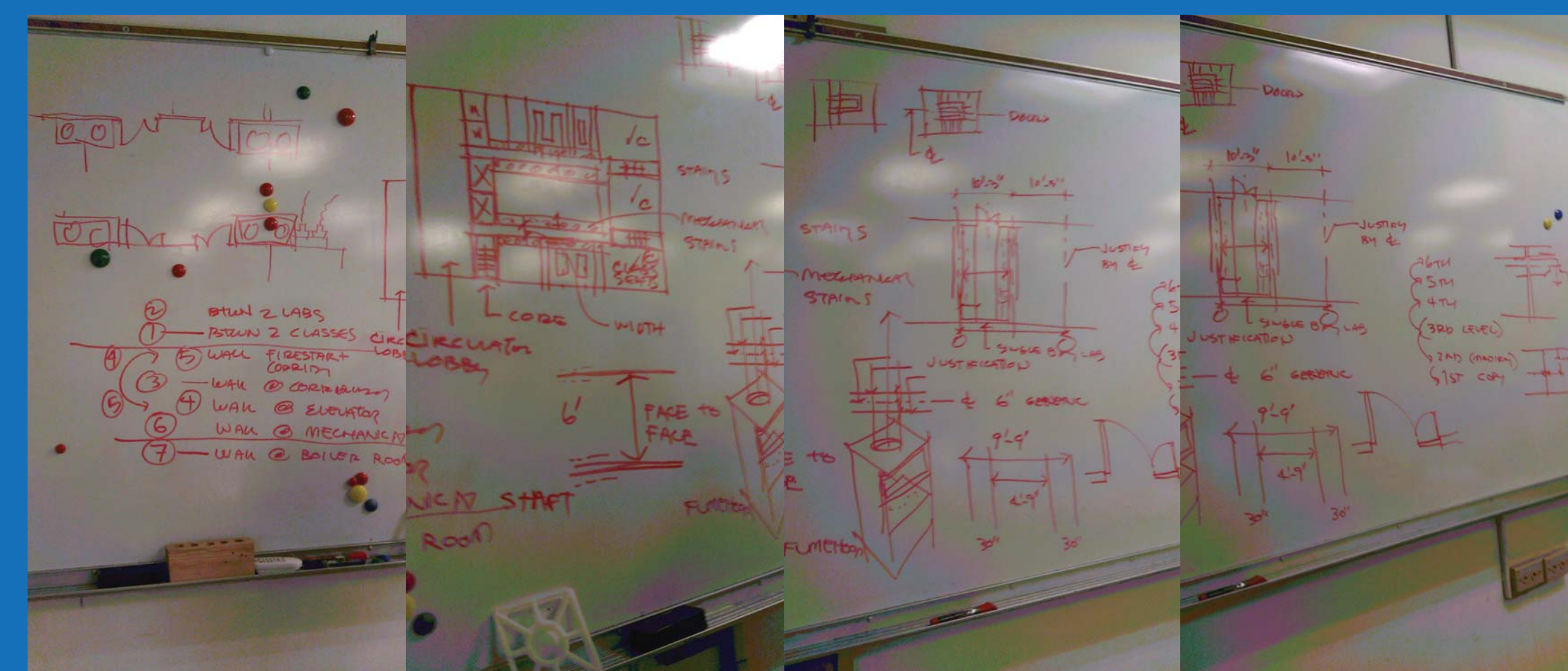


AUTO CAD Vs. REVIT



Auto CaD Brick pattern that help us produce the exterior pattern for our Gym exterior facade. Exterior Brick 3 5/8" & CMU 7 5/8".

NOTES



Fire safety notes, class discussion on what should be fire rated from greatest to less, also on how to go about working on our revit files.

VOCABULARY

Iterations - It's a process of repeating a set of instructions in different way a number of times or until a specific result is achieved.
Orientation - the position of something or someone.
Facade - the front of a building.
Integral - necessary to make something complete.
Retrofitting-The process of adding something to an already existing structure in order to prevent it from failure.

Case Study- The intensive analysis of an individual unit
Zoning- The land use planning used by local governments.
Parapet - A low wall on the roof to prevent falls.
Oblique drawing - a 3D dimensional drawing of an object that shows one side of its true shape, and the rest in distorted angles.
Isometric view - when an object is rotated to 30o.
Masonry Wall - exterior construction made from brick.
Pitched Roof - is a roof for which one or more roof surfaces is pitched more than 10 degrees.
Elevation- a drawing to scale of the external face of a building or structure
Expansion Joint- a gap in steel or concrete to allow for thermal expansion
Reveal- The part of the side of a window or door opening that is between the outer surface of a wall and the window or door frame.
Truss - A framework, typically consisting of rafters, posts, and struts, supports a roof, bridge, or other structure.
Fire Rating- the duration for which a passive fire protection system can withstand a standard fire resistance test.