

Fall 2011

AutoCAD.Sheets SHEET LAYOUT WITH MODELSPACE AND PAPERSPACE

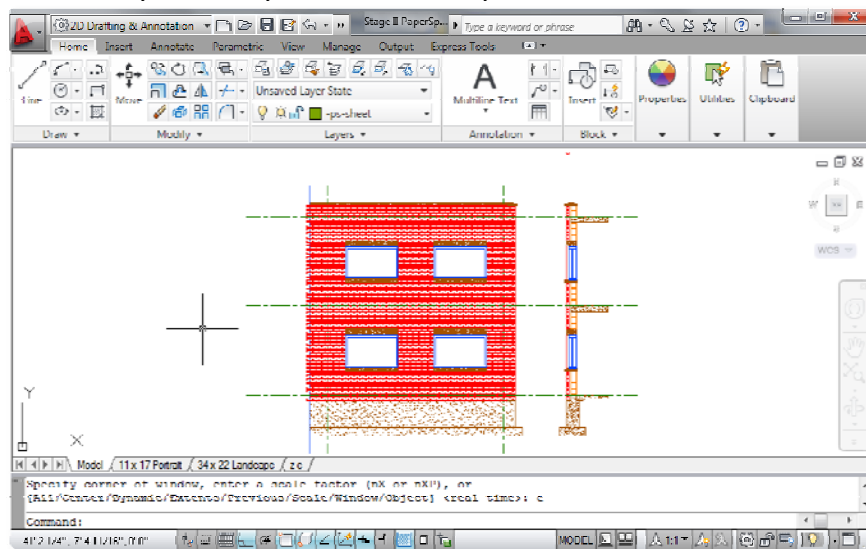
Overview: In order to plot an AutoCAD drawing you will need to use Paperspace. The following steps will help you through the process of formatting and cropping your wall section to format it on a titleblock

ModelSpace: ModelSpace is our working space where we create our drawing.

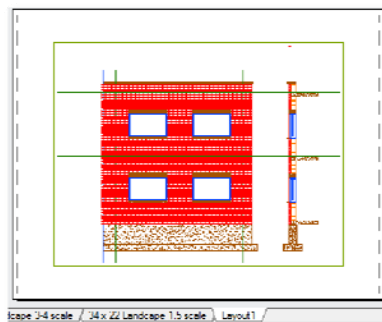
PaperSpace: Paperspace is where we define and create a titleblock. On the titleblock we will place "Mviews" of the Model.

Mview: A viewport created in Paperspace that allows us to see the model. The viewport can be used to crop the image and can be used to set scale.

Elevation & Section: In the drawing you should have your elevation and section drawn properly coursed by vertically and horizontally.



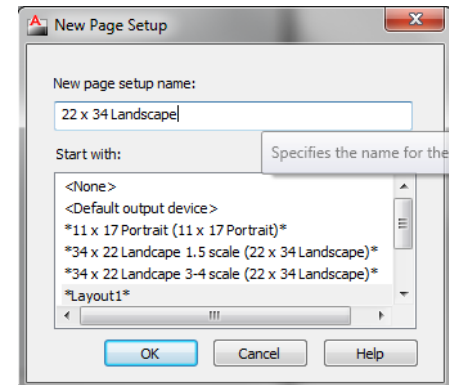
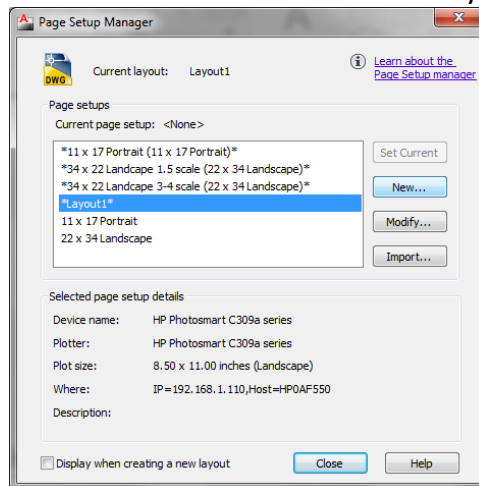
Layout 1: Make **Layout 1 Active**. The default settings will create an **8 1/2 x 11" sheet** and will place a single viewport on the page. The model will be "**scaled to fit**".



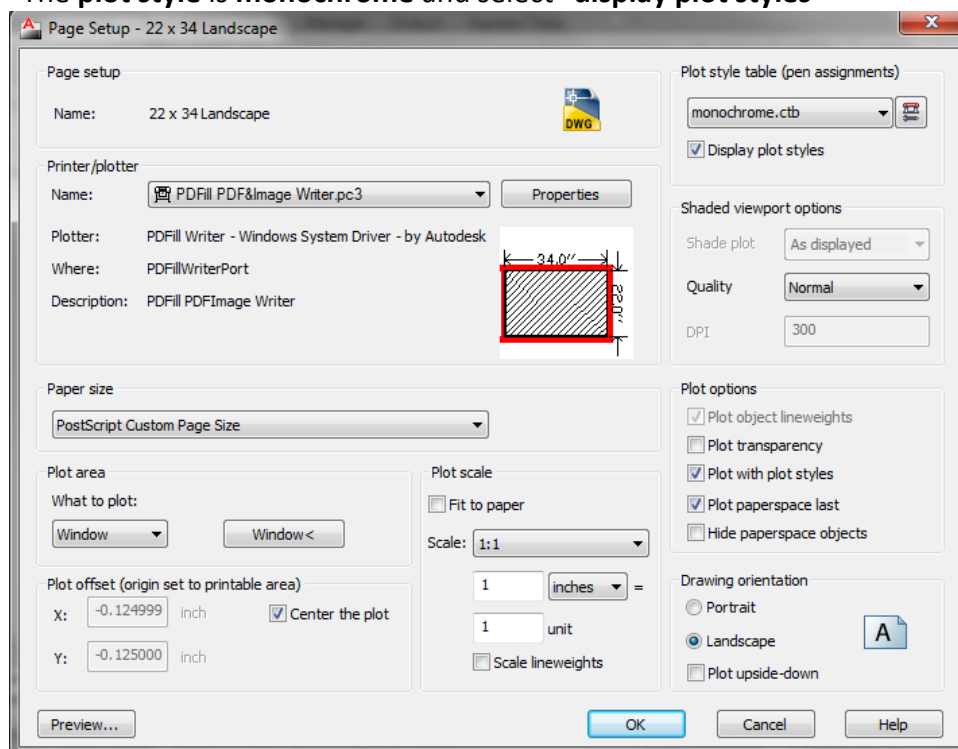
Next we will reformat the page

Fall 2011

PageSetup Manger: Right-click on the Layout 1 tab and select "**Page Setup Manager**"
Then select "**New**" and name the layout "**22 x 34 Landscape**"

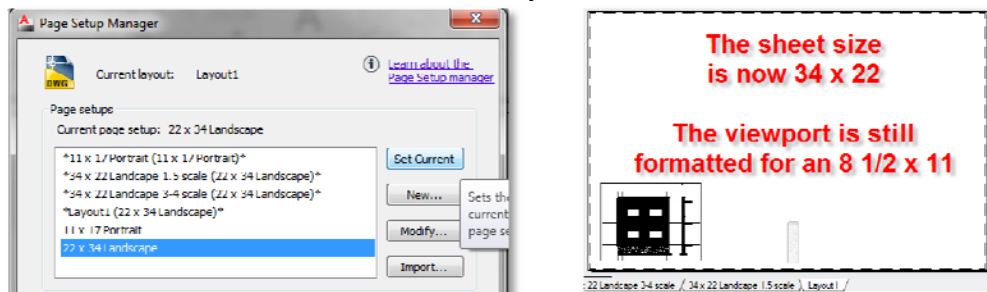


- Page Setup:**
- Select the correct **printer** (it must support a 22 x 34 sheet)
 - Set the **sheet size** to **22 x 34**
 - Set the **Plot Area** to **Window** and set the window to **0,0 & 34,22**
 - The **scale** should be **1=1**
 - Drawing **Orientation** is **Landscape**
 - The **plot style** is **monochrome** and select "**display plot styles**"

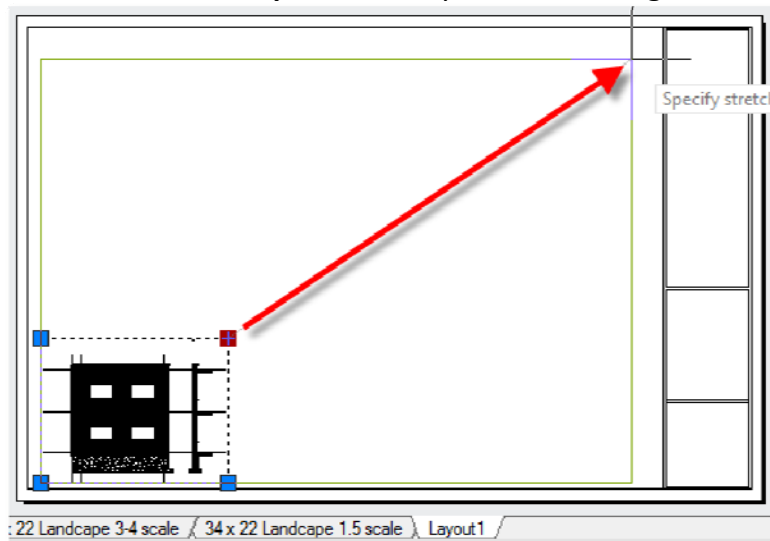


Fall 2011

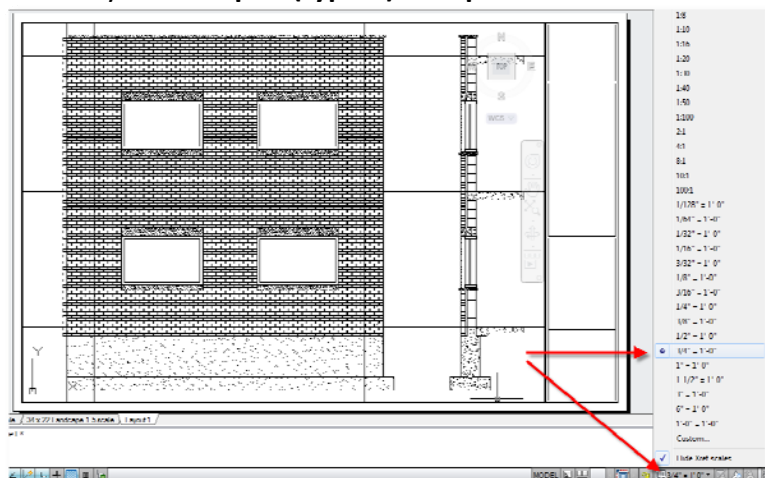
- Set Current:** Select **OK** on the previous screen.
Choose **34 x 22 Landscape** from the list and then select "Set Current"
The sheet size is now 34 x 22 - the viewport is still formatted for 8 1/2 x 11



- Resize Viewport:** Select the **Viewport** and snap it to fit the sheet drawing area
Then make the **viewport active** by double-clicking in the window

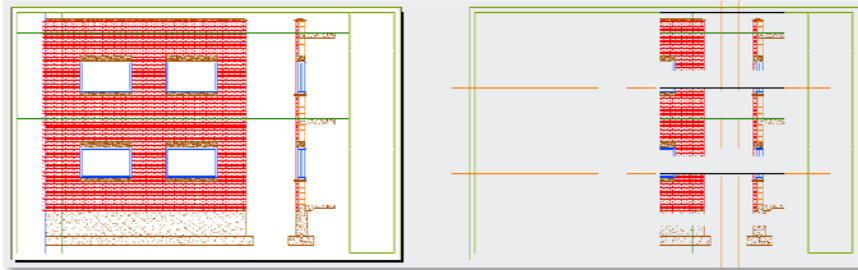


- Set Viewport Scale:** Next select the **scale** option and choose **3/4" = 1'-0"**
You may need to **pan (type P)** to **reposition** the **model** in the viewport

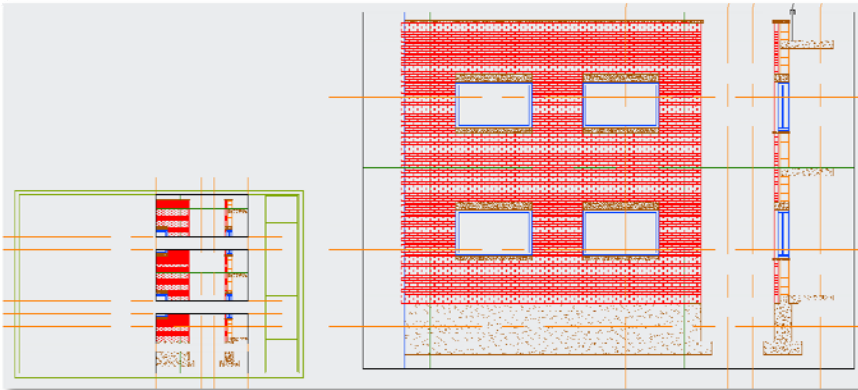


Fall 2011

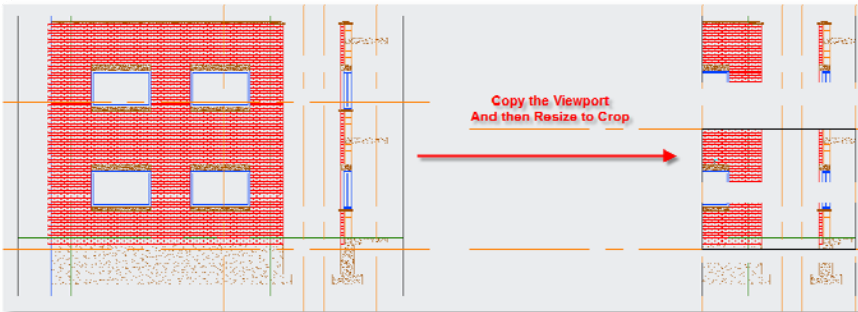
Draw Crop Guides: Draw **Guidelines for cropping**. Then **copy** and **resize viewports**.



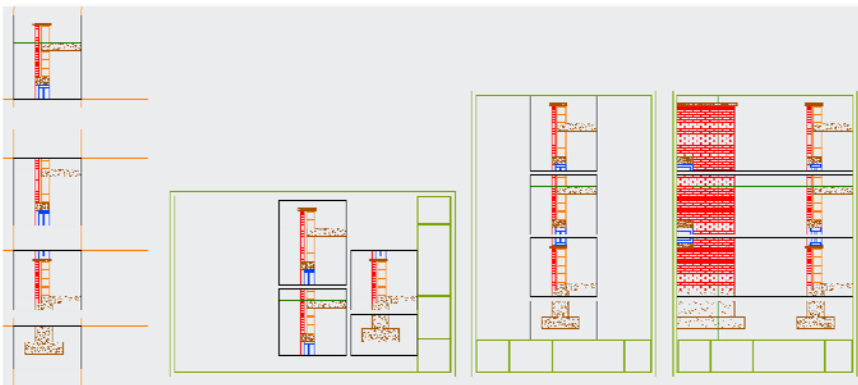
Scale x 2: Since $1\frac{1}{2}"$ is twice $\frac{3}{4}"$ - **scale the full elevation viewport & guidelines x 2**



Copy and Resize: **Copy and Resize the viewports again this time for $1\frac{1}{2}" = 1'-0"$**

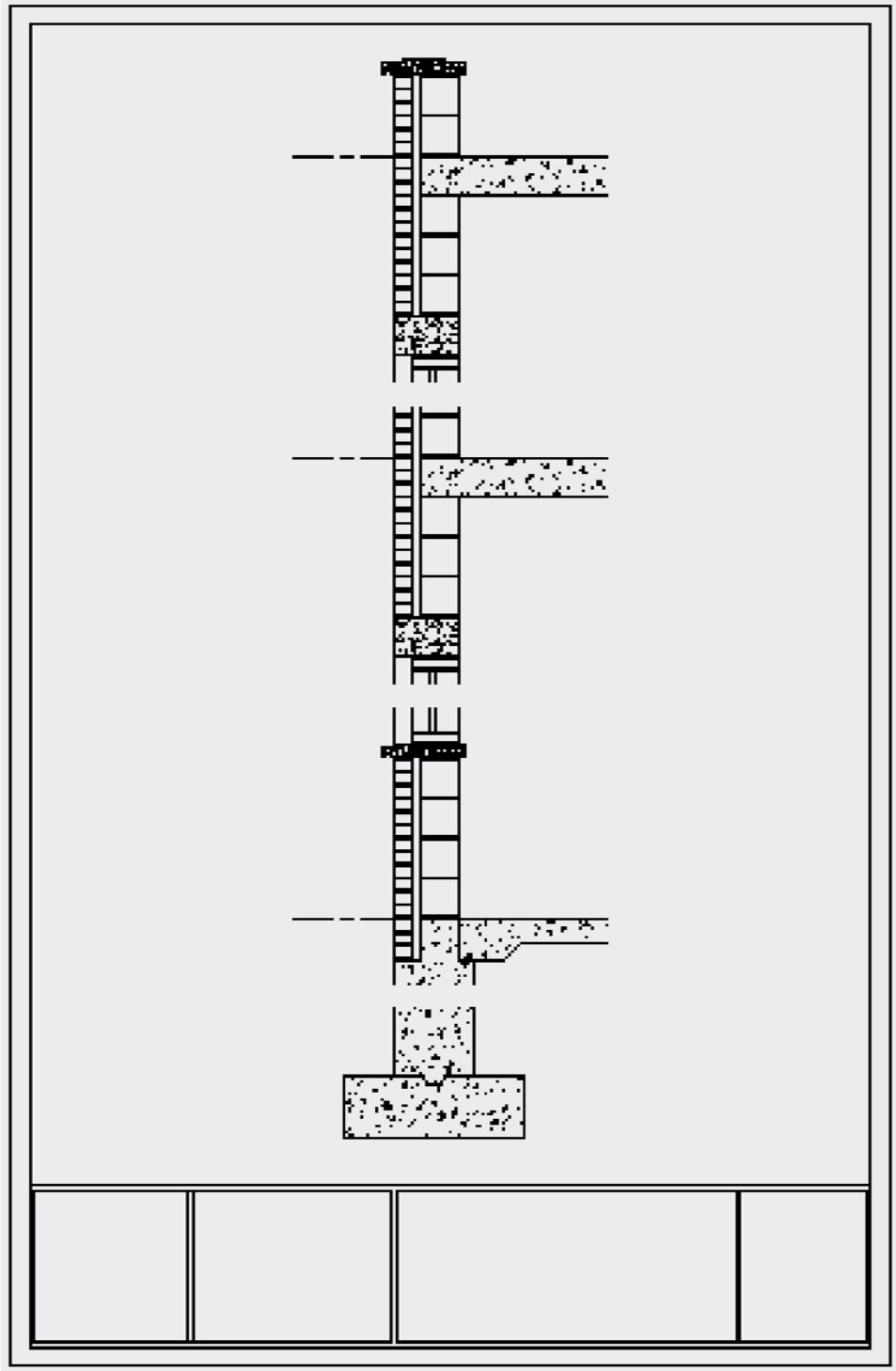


OK to Rotate Sheet: The **sheet** may need to be **rotated 90** degrees to fit the details



Fall 2011

Final Sheet: Turn off the layer that the viewports are drawn on.
The following is a wall section detail at $1\frac{1}{2}" = 1'-0"$ on a 22 x 34 sheet
Remember that you will need room for the notes:



Fall 2011

Final Sheet: The following is a **wall section detail** that also shows a **partial elevation**
Scaled at $1\frac{1}{2}" = 1'-0"$ on a 22 x 34 sheet

