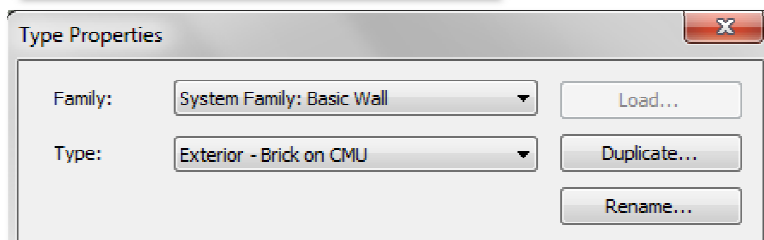
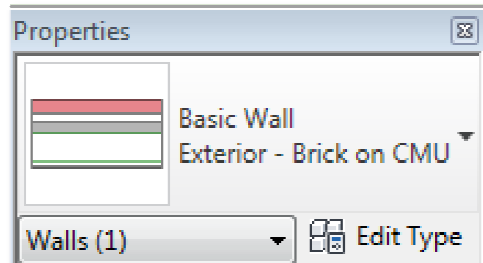


Fall 2011

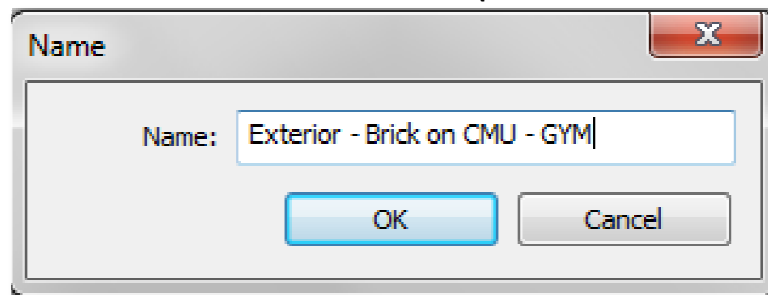
Gym.Masonry.2 BUILDING A COMPOUND MASONRY WALL - ADD BASE, REVEALS AND SWEEPS

Overview: Add Precast Concrete Base and Sweeps to the Multi-Use Space Masonry Wall

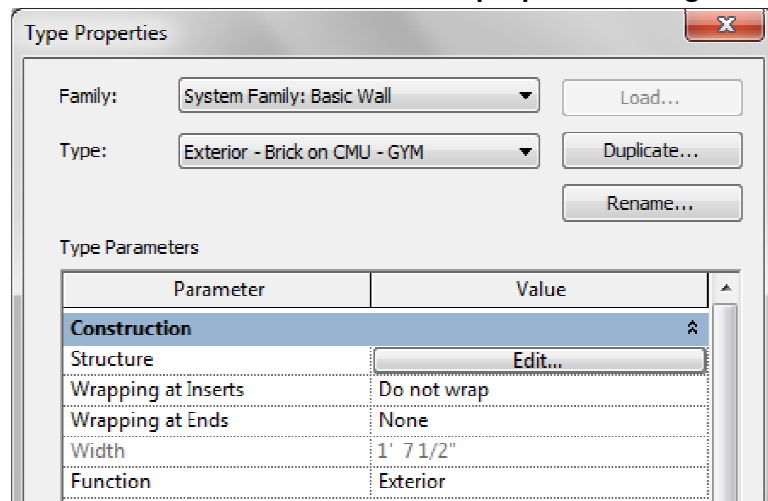
Duplicate the wall: Select the exterior masonry wall, then **Edit Type > Duplicate**



Add - **GYM** to the end of the name (**Exterior - Brick on CMU - GYM**)

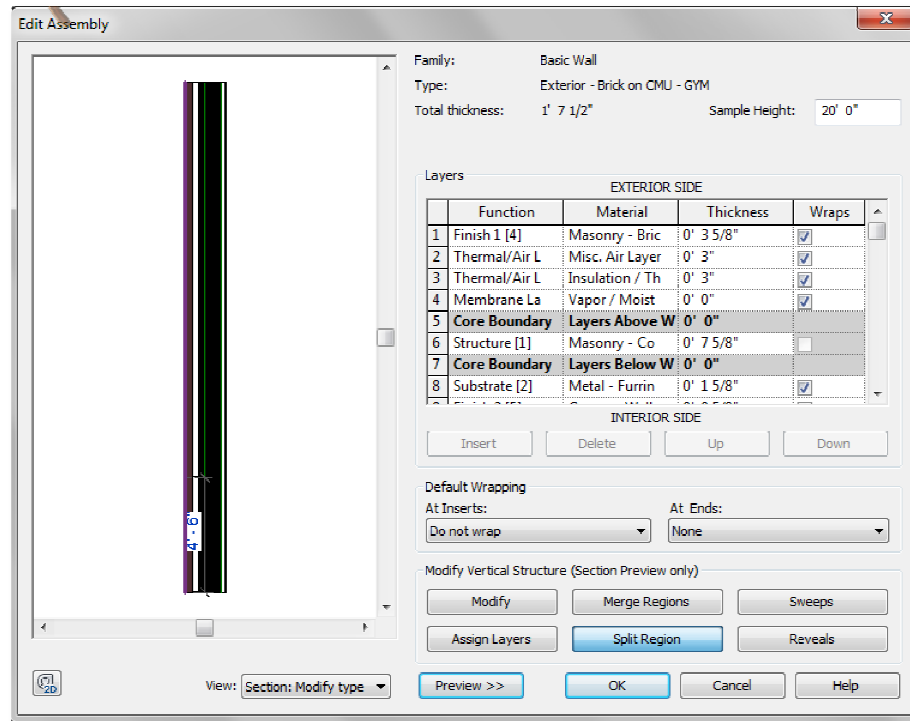


Edit the Structure: Select **Edit...** under structure in the **properties** dialogue box

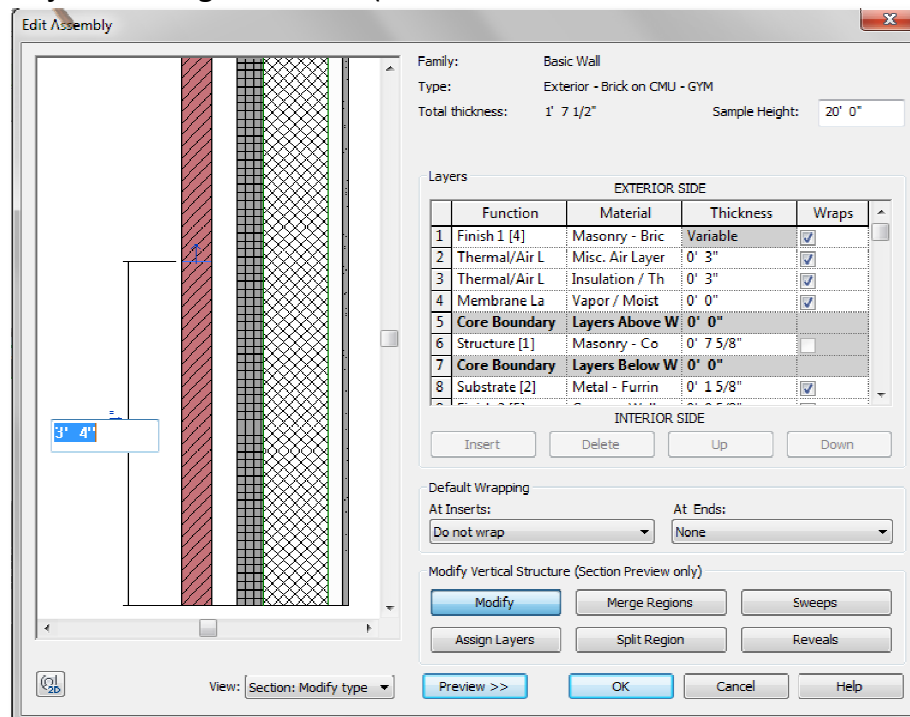


Fall 2011

Split Region: Change the view to **Section: Modify Type**. (*Zoom into the bottom of the wall*)
Select **Split Region** and then click on the brick facing

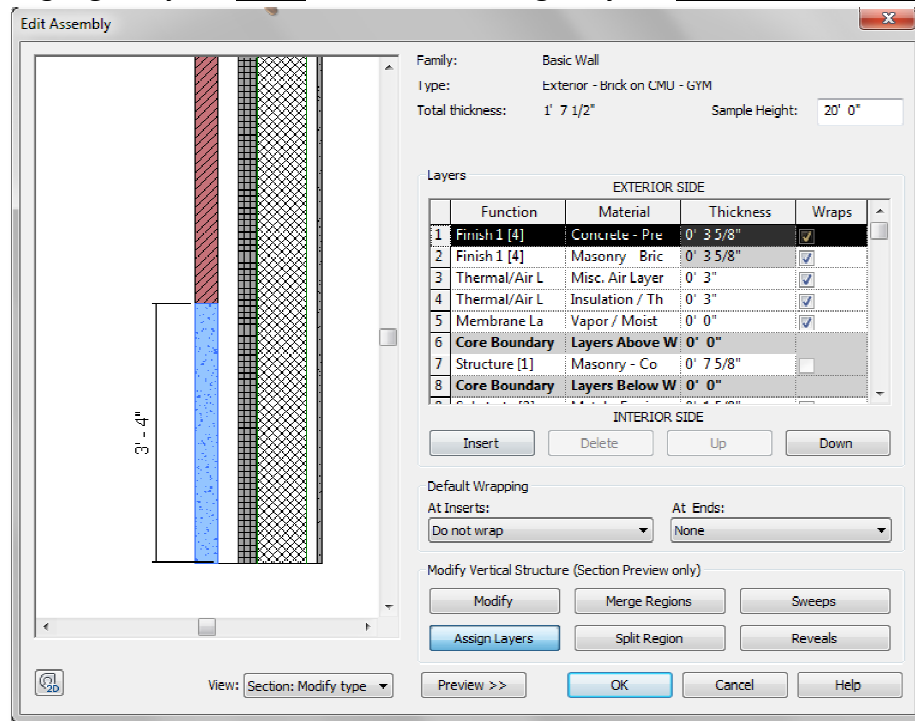


Next select **modify**. Next move your cursor to the split line and **click once**.
Adjust the height to 3'-4". (base size must work with 8" brick coursing)

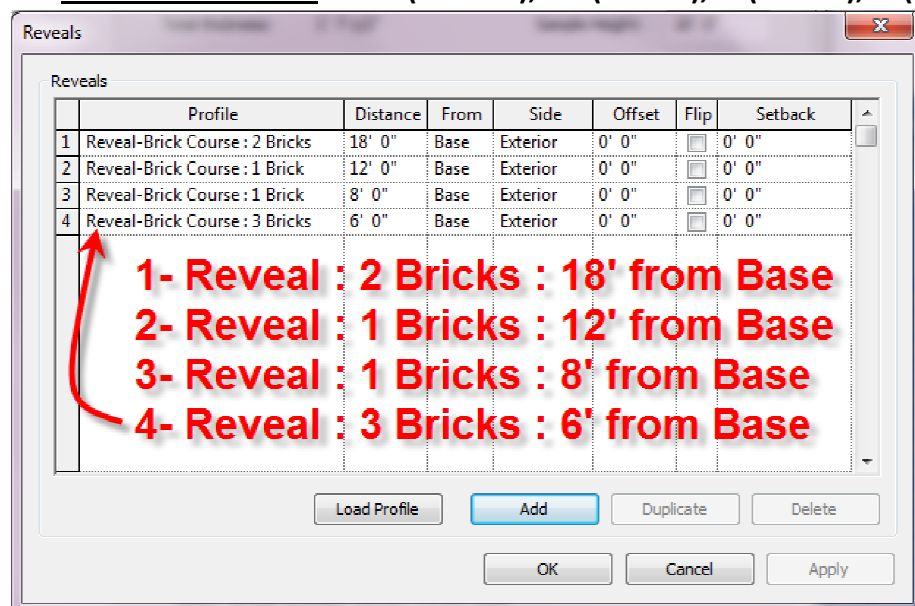


Fall 2011

- Assign Material:** Change the view to **Section: Modify Type**
Highlight layer 1 Select **Insert Layer**
Set the **Function** to **Finish 1[4]** and the **Material** to **Concrete - Precast**
Highlight layer 1 again Select **Assign Layer** > **Select edge of wall base**

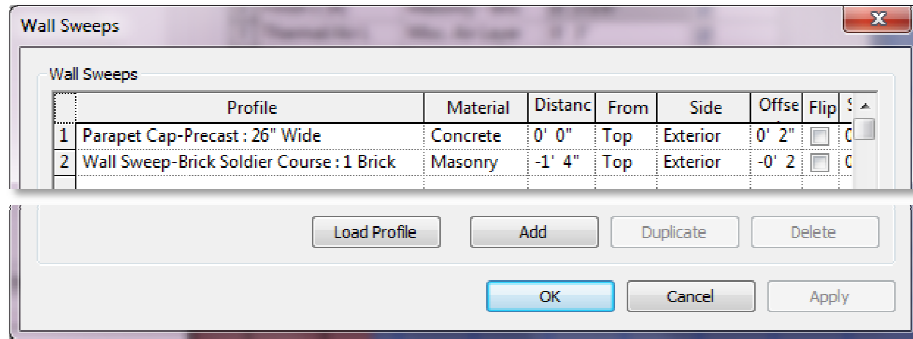


- Add Reveals:** Add **4 reveals as follows:** (distances from base must work with 8" brick coursing)
Set **Distance from Base** to **18' (2 Bricks), 12' (1 Brick), 8' (1 Brick), 6' (3 Bricks)**

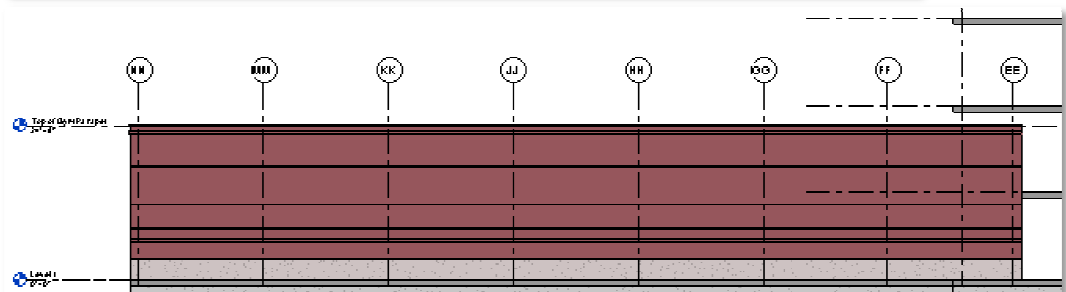


Fall 2011

Add Sweeps: Add 2 sweeps as follows: (distances from top must work with 8" brick coursing)
Parapet Cap - Precast: 26" , Material - Precast, From: Top, Offset 2"
Wall Sweep-Brick Soldier Course-1 Brick, Masonry-Brick Soldier, Distance -1'-4"



North Elevation:



Pre-Cast Coping

Brick Soldier Course

Brick Reveals

Pre-Cast Concrete Base

Final Compound Wall Sections

