

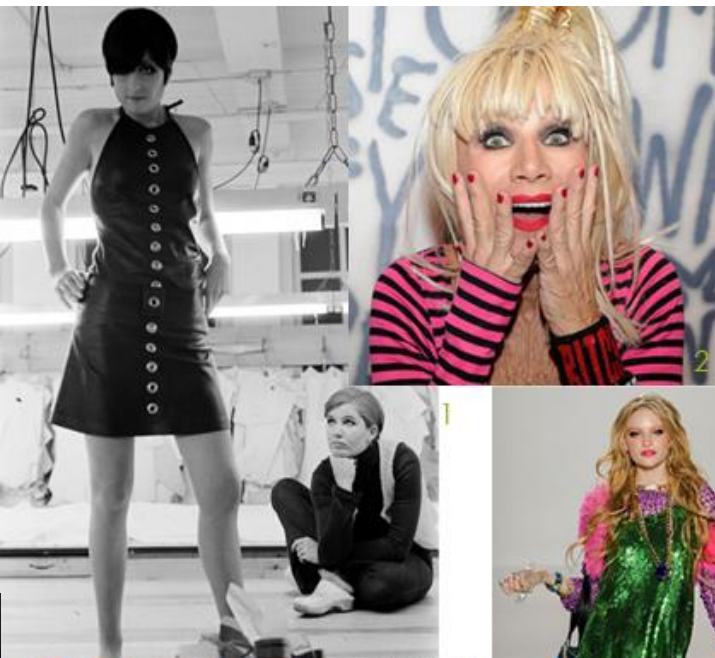


BETSEY JOHNSON

By: Kaynait Zafar
ARTH 1204- D434
Dr. Nazanin Munroe



Who is Betsey Johnson?



BETSEY
JOHNSON



THE EVOLUTION OF
BETSEY WORK'S

Designer: Betsey Johnson
Title: Ensemble
Date: 1966
Materials: cotton
Collection: The
Metropolitan Museum of Art
Accession Number:
1974.384.37a-d



Designer: Betsey Johnson

Title: Dress

Date: ca. 1968

Materials: synthetic

Collection: The

Metropolitan Museum of Art

Accession Number:

1974.384.17a–c



Designer: Betsey Johnson
Title: Ensemble
Date: 1972
Materials: synthetic
Collection: The
Metropolitan Museum of Art
Accession Number:
1974.171.4a, b



Designer: Betsey Johnson

Title: Ensemble

Date: 1970-1975

Material:

Machine-knitted wool yarn

Collection: V & A

Collections

Museum number:

T.113:1, 2-2009



Her Signature Move

Betsey Johnson does a cartwheel at the end of her fashion show.



2001 spring fashion show. (Corey Sipkin/New York Daily News)

Comparison



Designer: *Betsey Johnson*
Title: *Suit*
Date: *ca. 1966*
Materials: *Synthetic*
Collection: *The Metropolitan Museum of Art*
Accession Number: *2009.300.7929a, b*



Designer: *Karl Lagerfeld*
Title: *Suit*
Date: *1995- 96*
Materials: *(a, b) wool*
Collection: *The Metropolitan Museum of Art*
Accession Number: *2002.555.4a, b*

THE END!

Bibliography

- ❖ That Girl: An Oral History of Betsey Johnson. (n.d.). Retrieved from <https://www.google.com/amp/s/www.vogue.com/article/betsey-johnson-cfda-awards/amp>
- ❖ Betsey Johnson. (2019, July 23). Retrieved from <https://www.biography.com/.amp/fashion-designer/betsey-johnson>
- ❖ History Of Betsey Johnson. (n.d.). Retrieved from <https://www.businessinsider.com/history-of-betsey-johnson-2012-4?amp>
- ❖ Whimsical fashion designer Betsey Johnson's memoir is upbeat diversion for troubled times. (n.d.). Retrieved from <https://www.google.com/amp/s/www.nydailynews.com/new-york/ny-betsey-johnson-biography-20200328-w4eyab3vvbb7zilyiw5xprn4gy-story.html?outputType=amp>
- ❖ Ensemble - Victoria & Albert Museum - Search the Collections. (n.d.). Retrieved from <http://m.vam.ac.uk/item/O1135685/ensemble-johnson-betsey/>
- ❖ <https://www.metmuseum.org/art/collection/search/87846>
[searchField=All&sortBy=Relevance&who=Chanel%2c+House+of%24House+of+Chanel&ft=*&offset=0&pp=20&pos=20](https://www.metmuseum.org/art/collection/search/87846?searchField=All&sortBy=Relevance&who=Chanel%2c+House+of%24House+of+Chanel&ft=*&offset=0&pp=20&pos=20)
- ❖ (n.d.). Retrieved from <https://www.metmuseum.org/art/collection/search/94776>
- ❖ (n.d.). Retrieved from <https://www.metmuseum.org/art/collection/search/94780>
- ❖ (n.d.). Retrieved from <https://www.metmuseum.org/art/collection/search/174953>
- ❖ (n.d.). Retrieved from <https://www.metmuseum.org/art/collection/search/94774>