

ARCH 1250 APPLIED ENVIRONMENTAL STUDIES

SITE GRAPHICS *for* *Inventory, analysis and design*

Prof. Paul C. King, RA, AIA, ARA
Assistant Professor
New York City College of Technology

TERM PROJECT

SAMPLE
GRAPHICS

Ian McHarg

INVENTORY

ANALYSIS

DESIGN

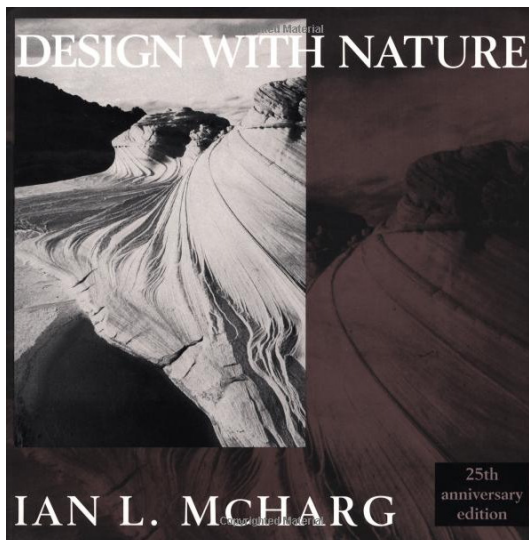
PRESENTATION

ARCH 1250
APPLIED
ENVIRONMENTAL
STUDIES

NYC COLLEGE
OF TECHNOLOGY

Site Analysis

Ian McHarg Style Layered approach



"Let us green the earth,
restore the earth,
heal the earth."

Source: http://www.larch.umd.edu/classes/larc/L160/Lecture%20Presentations/Planned_Communities_11_3_08.pdf

TERM PROJECT
SAMPLE GRAPHICS

Ian McHarg

INVENTORY

ANALYSIS

DESIGN

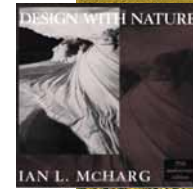
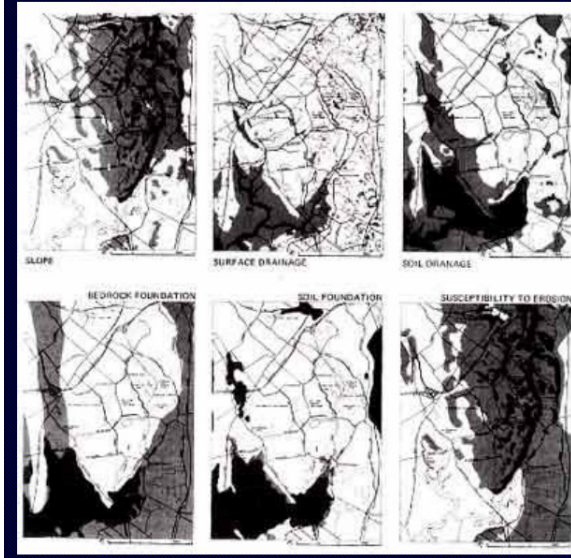
PRESENTATION

ARCH 1250
APPLIED ENVIRONMENTAL STUDIES

NYC COLLEGE OF TECHNOLOGY

Site Analysis - Ian McHarg Style Layered approach

Overlay Method for Site Analysis



"Let us ask the land where are the best sites. Let us establish criteria for many different types of excellence responding to a wide range of choice"

Source: http://www.larch.umd.edu/classes/larc/L160/Lecture%20Presentations/Planned_Communities_11_3_08.pdf

TERM PROJECT
SAMPLE GRAPHICS

Ian McHarg

INVENTORY

ANALYSIS

DESIGN

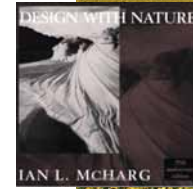
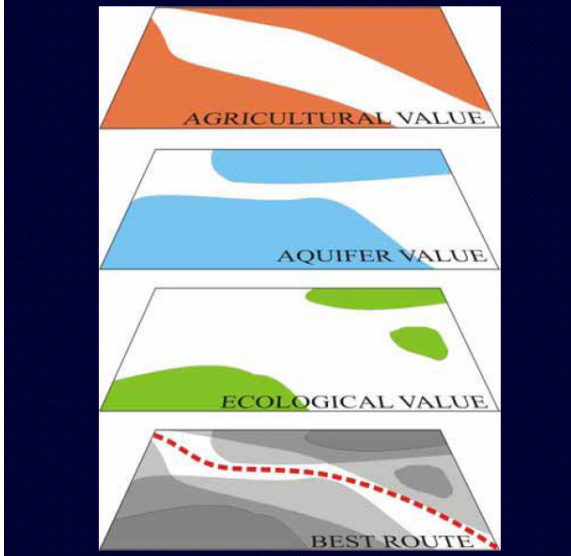
PRESENTATION

ARCH 1250
APPLIED ENVIRONMENTAL STUDIES

NYC COLLEGE OF TECHNOLOGY

Site Analysis - Ian McHarg Style Layered approach

Overlay Method for Site Analysis



"The most important issue of the 21st century will be the condition of the global environment."

Source: http://www.larch.umd.edu/classes/larc/L160/Lecture%20Presentations/Planned_Communities_11_3_08.pdf

TERM PROJECT
SAMPLE GRAPHICS

Ian McHarg

INVENTORY

ANALYSIS

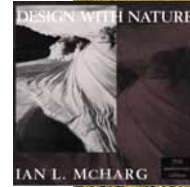
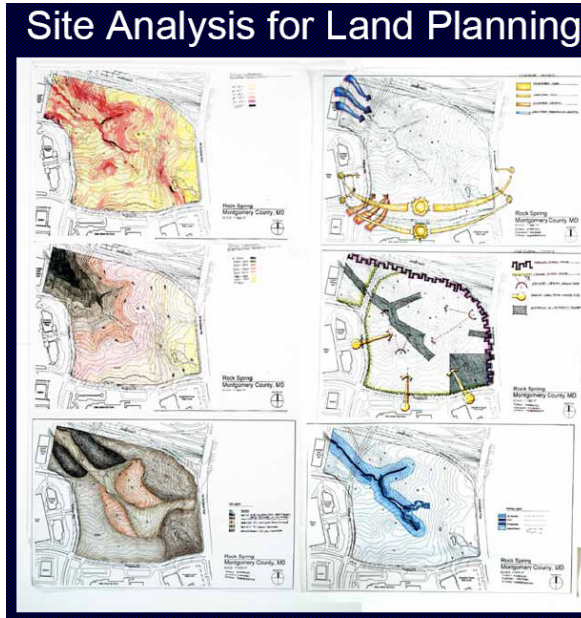
DESIGN

PRESENTATION

ARCH 1250
APPLIED ENVIRONMENTAL STUDIES

NYC COLLEGE OF TECHNOLOGY

Site Analysis - Ian McHarg Style Layered approach



"It seems a more appropriate description for ecological relationships."

Source: http://www.larch.umd.edu/classes/larc/L160/Lecture%20Presentations/Planned_Communities_11_3_08.pdf

TERM PROJECT
SAMPLE GRAPHICS

Ian McHarg

INVENTORY

ANALYSIS

DESIGN

PRESENTATION

ARCH 1250
APPLIED ENVIRONMENTAL STUDIES

NYC COLLEGE OF TECHNOLOGY

Site Analysis

Topography & Slope Suitability



Source: <http://www.scribd.com/doc/6691376/Site-Analysis-Drawings>

TERM PROJECT
SAMPLE GRAPHICS

Ian McHarg

INVENTORY

ANALYSIS

DESIGN

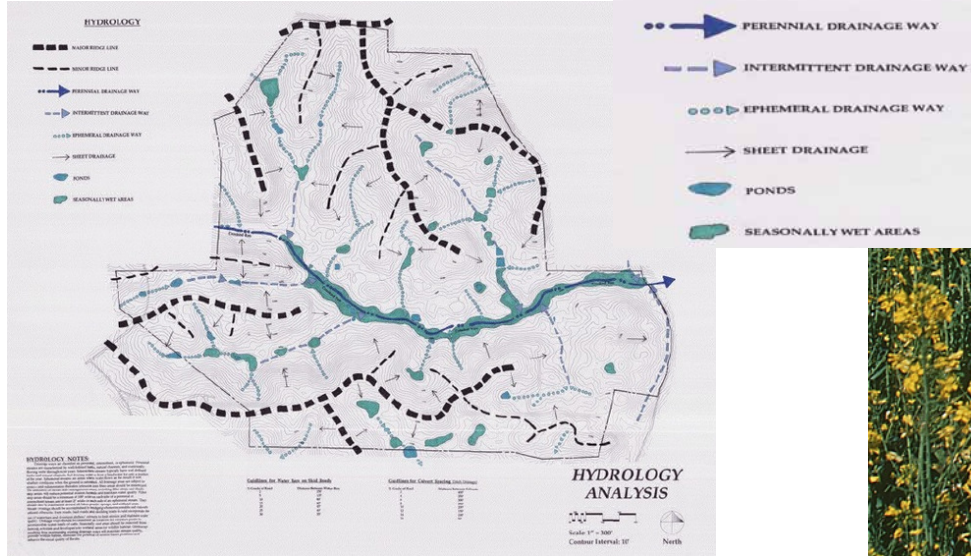
PRESENTATION

ARCH 1250
APPLIED ENVIRONMENTAL STUDIES

NYC COLLEGE OF TECHNOLOGY

Site Analysis

Hydrology



Source: <http://www.scribd.com/doc/6691376/Site-Analysis-Drawings>

TERM PROJECT
SAMPLE GRAPHICS

Ian McHarg

INVENTORY

ANALYSIS

DESIGN

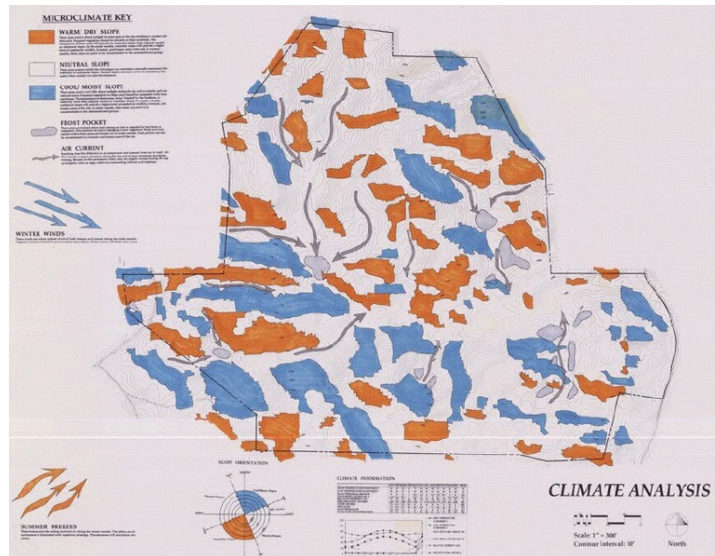
PRESENTATION

ARCH 1250
APPLIED ENVIRONMENTAL STUDIES

NYC COLLEGE OF TECHNOLOGY

Site Analysis

Climate & Microclimate



Source: <http://www.scribd.com/doc/6691376/Site-Analysis-Drawings>

TERM PROJECT
SAMPLE
GRAPHICS

Ian McHarg

INVENTORY

ANALYSIS

DESIGN

PRESENTATION

ARCH 1250
APPLIED
ENVIRONMENTAL
STUDIES

NYC COLLEGE
OF TECHNOLOGY

Site Analysis

Vegetation & Wildlife



Source: <http://www.scribd.com/doc/6691376/Site-Analysis-Drawings>

TERM PROJECT
SAMPLE
GRAPHICS

Ian McHarg

INVENTORY

ANALYSIS

DESIGN

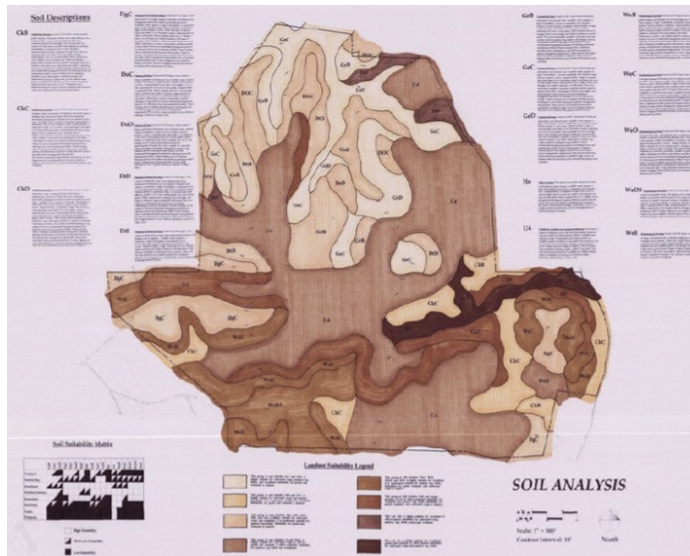
PRESENTATION

ARCH 1250
APPLIED
ENVIRONMENTAL
STUDIES

NYC COLLEGE
OF TECHNOLOGY

Site Analysis

Soils



Source: <http://www.scribd.com/doc/6691376/Site-Analysis-Drawings>

TERM PROJECT
SAMPLE GRAPHICS

Ian McHarg

INVENTORY

ANALYSIS

DESIGN

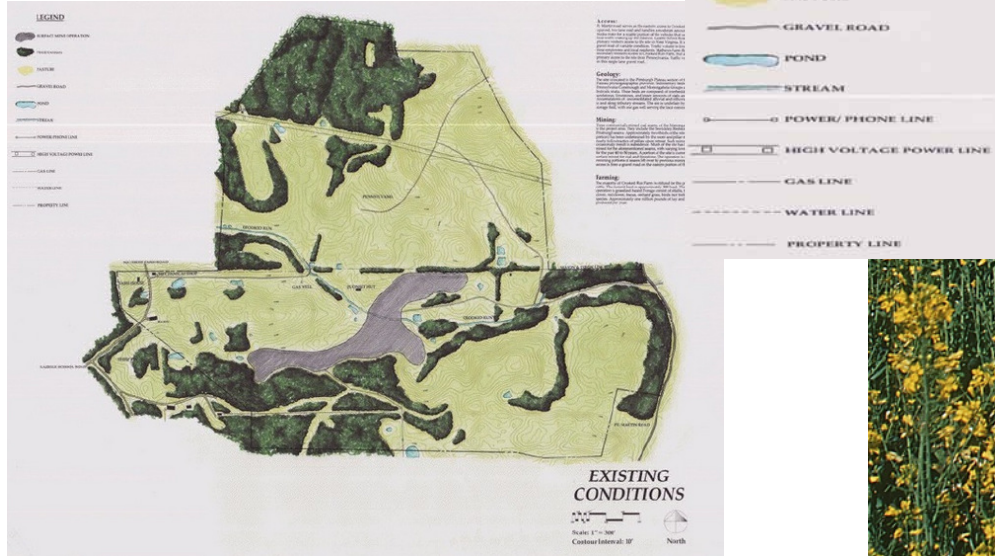
PRESENTATION

ARCH 1250
APPLIED ENVIRONMENTAL STUDIES

NYC COLLEGE OF TECHNOLOGY

Site Analysis

Existing Conditions



Source: <http://www.scribd.com/doc/6691376/Site-Analysis-Drawings>

TERM PROJECT
SAMPLE GRAPHICS

Ian McHarg

INVENTORY

ANALYSIS

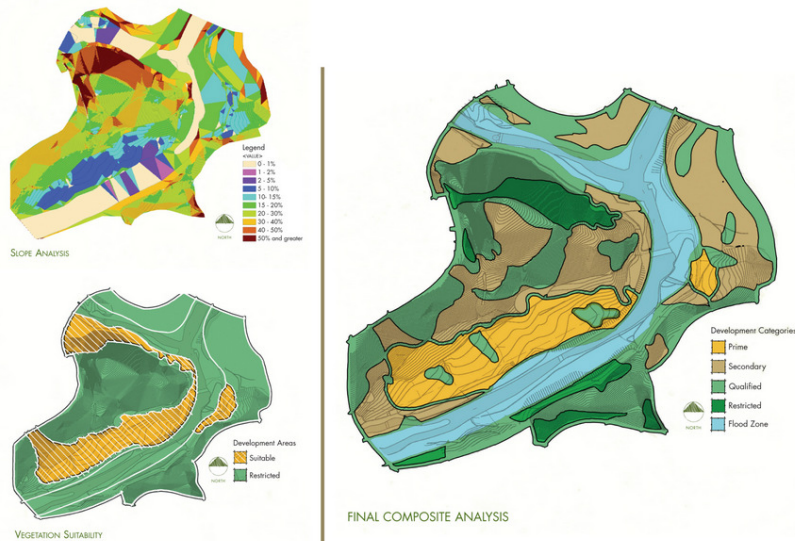
DESIGN

PRESENTATION

ARCH 1250
APPLIED ENVIRONMENTAL STUDIES

NYC COLLEGE OF TECHNOLOGY

Site Analysis



Source: http://www.asla.org/2010awards/images/largescale/370_05.jpg

TERM PROJECT
SAMPLE GRAPHICS

Ian McHarg

INVENTORY

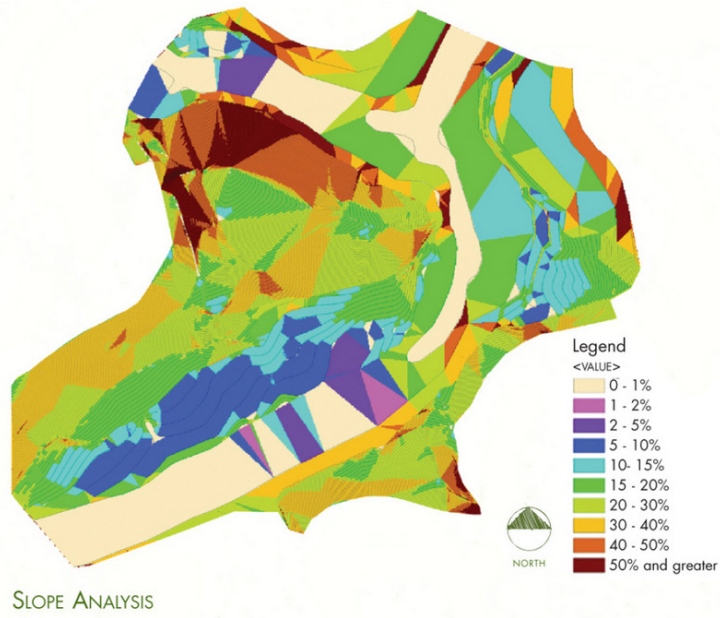
ANALYSIS

DESIGN

PRESENTATION

ARCH 1250
APPLIED ENVIRONMENTAL STUDIES
NYC COLLEGE OF TECHNOLOGY

Site Analysis



SLOPE ANALYSIS

Source: http://www.asla.org/2010awards/images/largescale/370_05.jpg

TERM PROJECT
SAMPLE GRAPHICS

Ian McHarg

INVENTORY

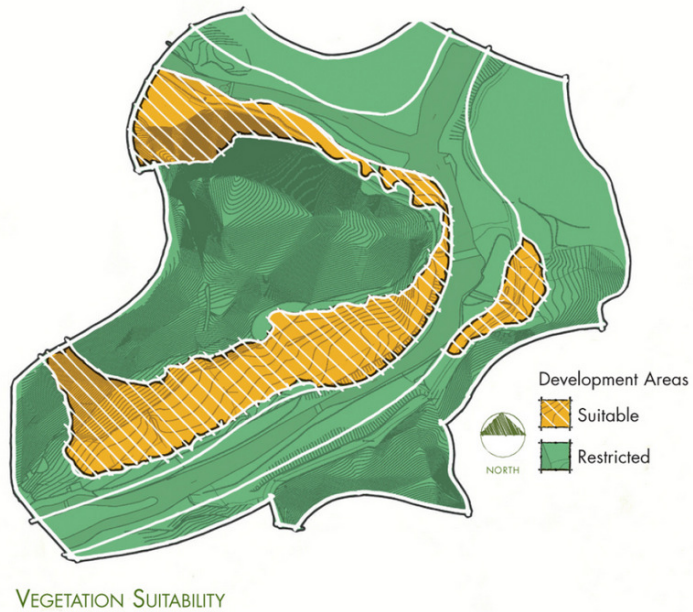
ANALYSIS

DESIGN

PRESENTATION

ARCH 1250
APPLIED ENVIRONMENTAL STUDIES
NYC COLLEGE OF TECHNOLOGY

Site Analysis

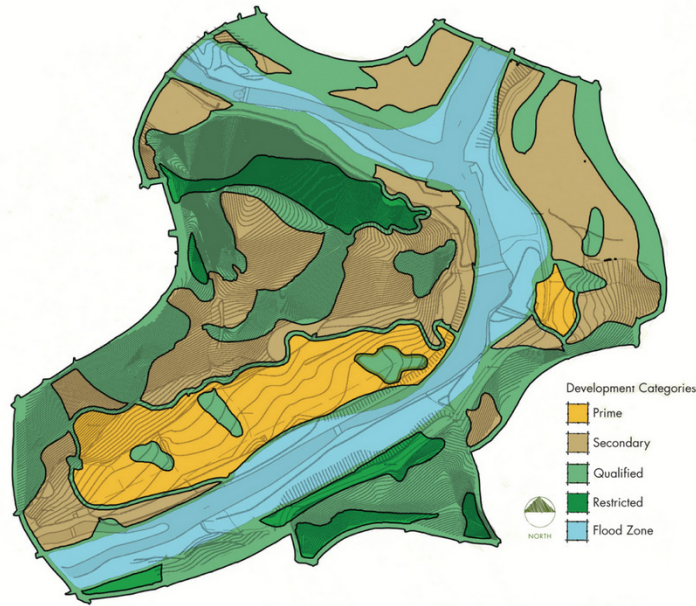


VEGETATION SUITABILITY

Source: http://www.asla.org/2010awards/images/largescale/370_05.jpg

TERM PROJECT
 SAMPLE GRAPHICS
 Ian McHarg
 INVENTORY
 ANALYSIS
 DESIGN
 PRESENTATION
 ARCH T250
 APPLIED ENVIRONMENTAL STUDIES
 NYC COLLEGE OF TECHNOLOGY

Site Analysis

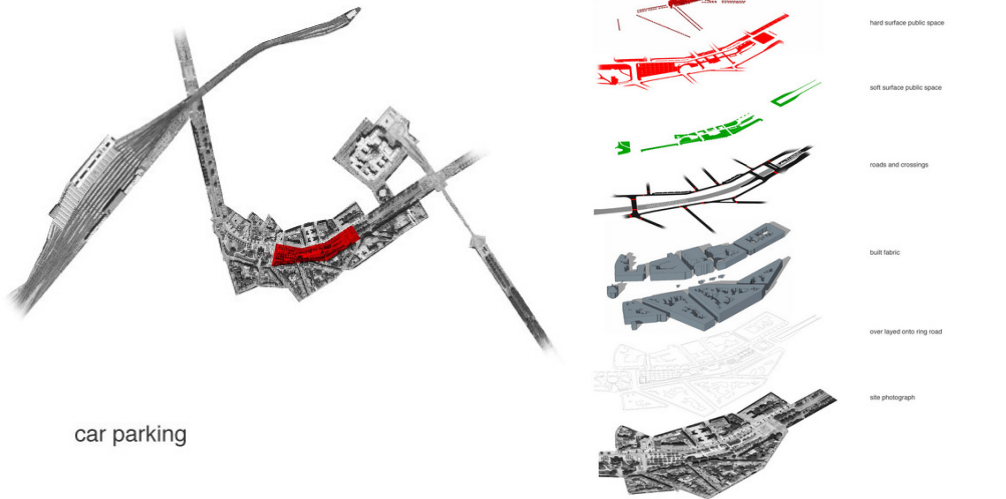


Source: http://www.asla.org/2010awards/images/largescale/370_05.jpg

TERM PROJECT
 SAMPLE GRAPHICS
 Ian McHarg
 INVENTORY
 ANALYSIS
 DESIGN
 PRESENTATION
 ARCH T250
 APPLIED ENVIRONMENTAL STUDIES
 NYC COLLEGE OF TECHNOLOGY

Site Analysis

Ian McHarg Design with Nature



Source: http://studiotwo.files.wordpress.com/2007/03/site_analysis.jpg

TERM PROJECT

SAMPLE GRAPHICS

Ian McHarg

INVENTORY

ANALYSIS

DESIGN

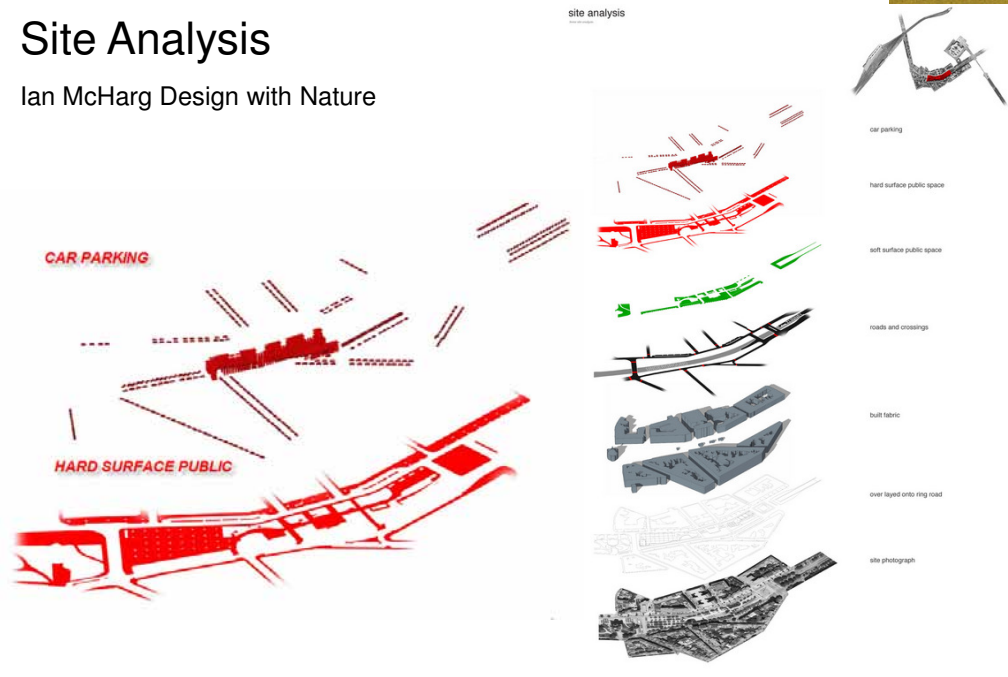
PRESENTATION

ARCH 1250
APPLIED ENVIRONMENTAL STUDIES

NYC COLLEGE OF TECHNOLOGY

Site Analysis

Ian McHarg Design with Nature



Source: http://studiotwo.files.wordpress.com/2007/03/site_analysis.jpg

TERM PROJECT

SAMPLE GRAPHICS

Ian McHarg

INVENTORY

ANALYSIS

DESIGN

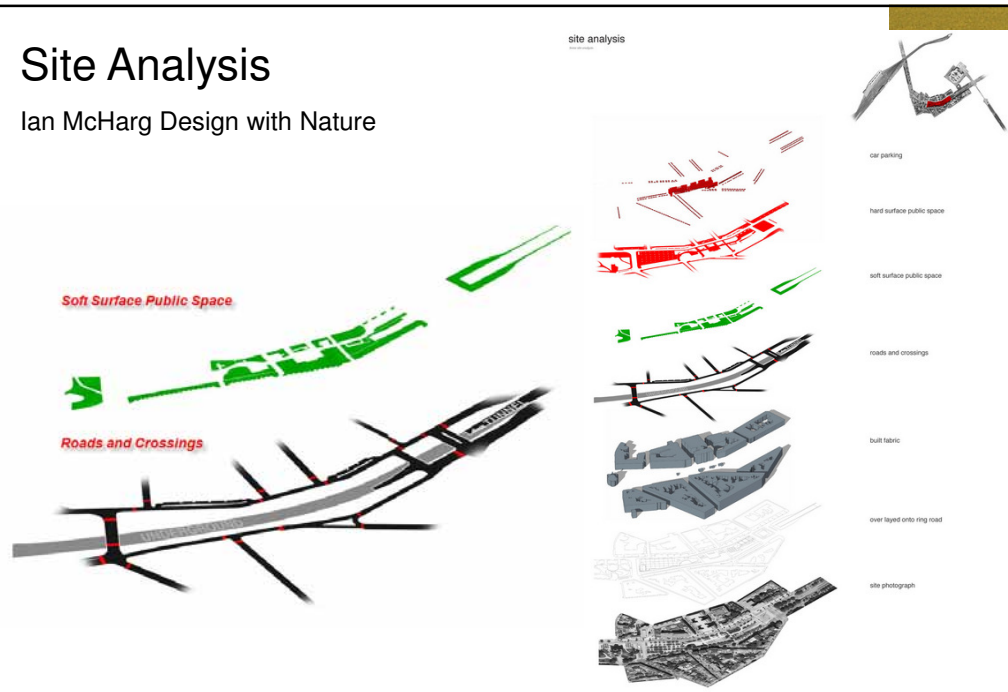
PRESENTATION

ARCH 1250
APPLIED ENVIRONMENTAL STUDIES

NYC COLLEGE OF TECHNOLOGY

Site Analysis

Ian McHarg Design with Nature



Source: http://studiotwo.files.wordpress.com/2007/03/site_analysis.jpg

TERM PROJECT

SAMPLE GRAPHICS

Ian McHarg

INVENTORY

ANALYSIS

DESIGN

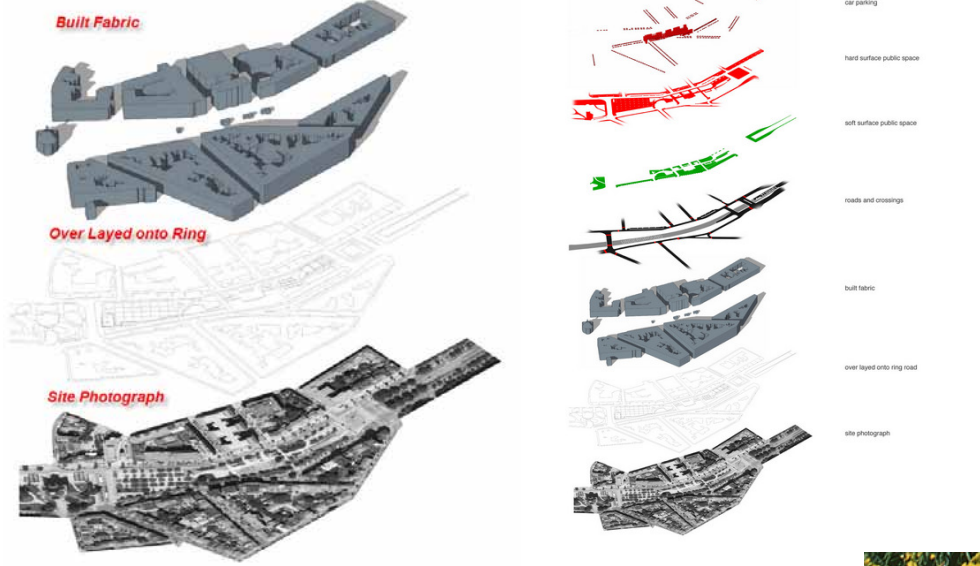
PRESENTATION

ARCH 1250
APPLIED ENVIRONMENTAL STUDIES

NYC COLLEGE OF TECHNOLOGY

Site Analysis

Ian McHarg Design with Nature



Source: http://studiotwo.files.wordpress.com/2007/03/site_analysis.jpg

TERM PROJECT

SAMPLE GRAPHICS

Ian McHarg

INVENTORY

ANALYSIS

DESIGN

PRESENTATION

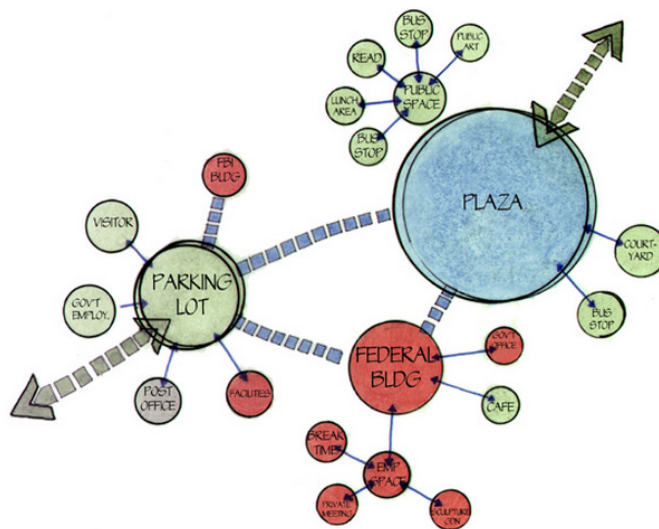
BUBBLE DIAGRAMS

ARCH 1250
APPLIED ENVIRONMENTAL STUDIES

NYC COLLEGE OF TECHNOLOGY

Design - Bubble Diagrams

Space Relationships & Circulation



Source: http://www.marksusser.com/images/concept/bubble_diagram_w.jpg

TERM PROJECT

SAMPLE GRAPHICS

Ian McHarg

INVENTORY

ANALYSIS

DESIGN

PRESENTATION

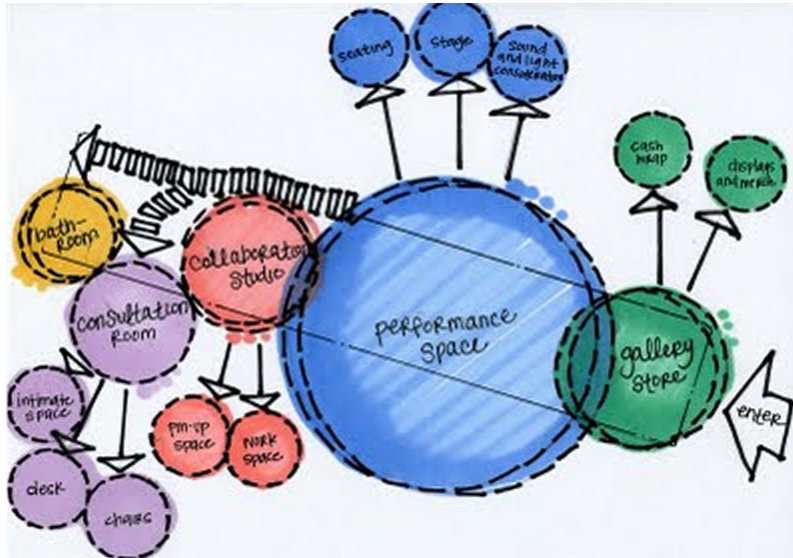
BUBBLE DIAGRAMS

ARCH T250
APPLIED ENVIRONMENTAL STUDIES

NYC COLLEGE OF TECHNOLOGY

Design - Bubble Diagrams

Space Relationships & Circulation



Source: <http://lilylover.blogspot.com/2009/10/hatchery-bubble-diagram.html>

TERM PROJECT

SAMPLE GRAPHICS

Ian McHarg

INVENTORY

ANALYSIS

DESIGN

PRESENTATION

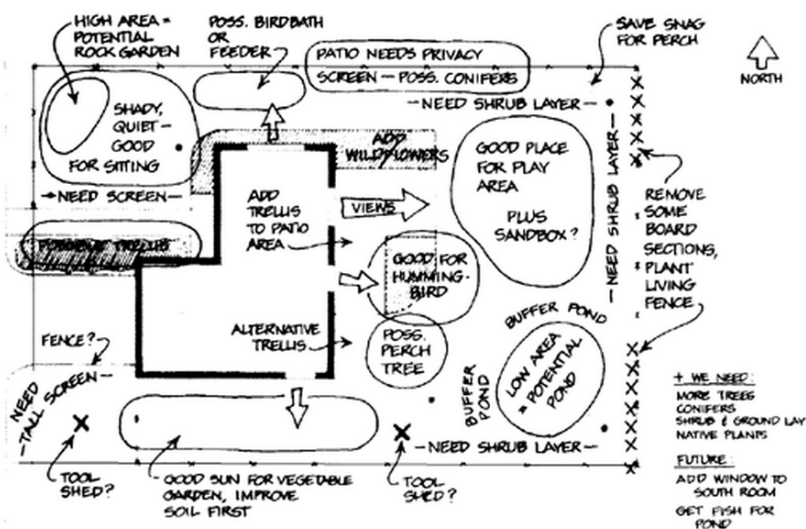
BUBBLE DIAGRAMS

ARCH T250
APPLIED ENVIRONMENTAL STUDIES

NYC COLLEGE OF TECHNOLOGY

Design - Bubble Diagrams

Space Relationships & Circulation

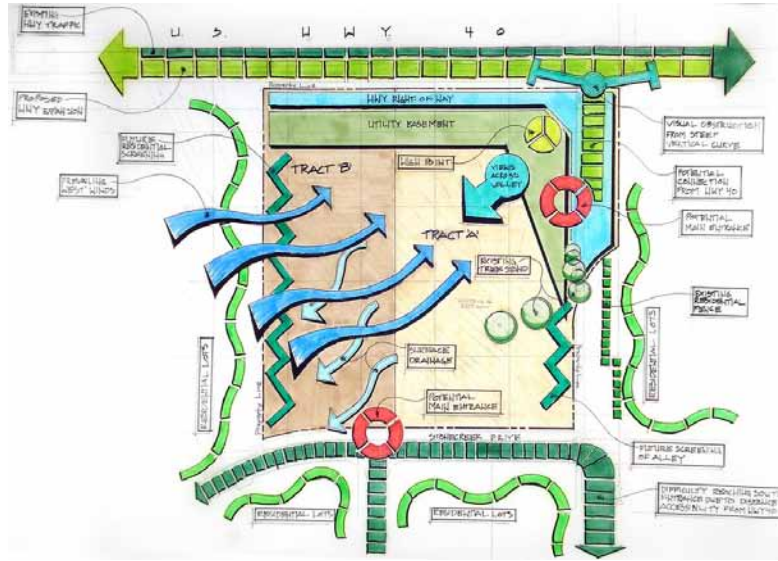


Source: <http://www.epa.gov/greenacres/wildones/images/bubble.gif>

TERM PROJECT
 SAMPLE GRAPHICS
 Ian McHarg
 INVENTORY
 ANALYSIS
 DESIGN
 PRESENTATION

Site Inventory & Analysis

Circulation, nodes, winds, noise, views



Source: <http://churcharchitectkc.files.wordpress.com/2012/02/sevendaylawrence.jpg>

ARCH T250
 APPLIED ENVIRONMENTAL STUDIES
 NYC COLLEGE OF TECHNOLOGY

TERM PROJECT
 SAMPLE GRAPHICS
 Ian McHarg
 INVENTORY
 ANALYSIS
 DESIGN
 PRESENTATION

Planning Presentation

Facilities Management Department



Duke University Office of the University Architect

Duke University
 Illustrative Campus Master Plan
 2007 Update

Source: <http://fmd.duke.edu/guidelines/planning.php>

ARCH T250
 APPLIED ENVIRONMENTAL STUDIES
 NYC COLLEGE OF TECHNOLOGY

TERM PROJECT
 SAMPLE GRAPHICS
 Ian McHarg
 INVENTORY
 ANALYSIS
 DESIGN
 PRESENTATION
 ARCH 1250
 APPLIED ENVIRONMENTAL STUDIES
 NYC COLLEGE OF TECHNOLOGY

Planning Presentation

Whatcom county public works

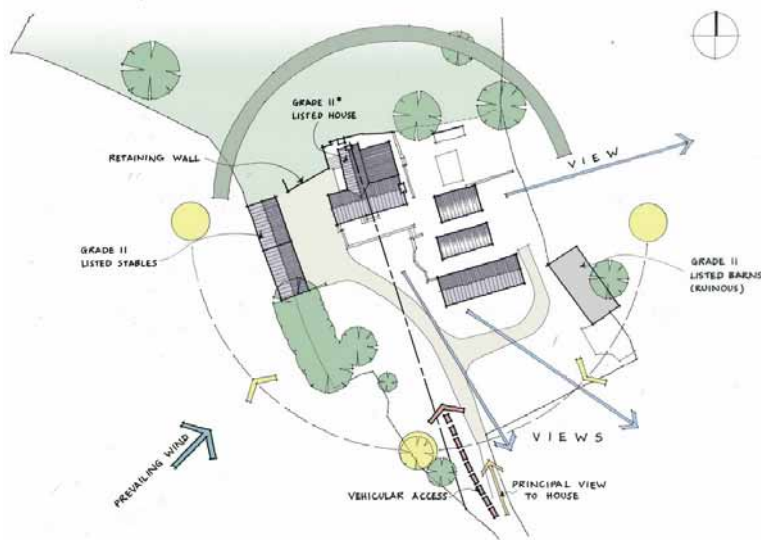


Source: http://www.whatcomcounty.us/publicworks/ferry/images/LIFPD_SiteAnaysis.P1_000.jpg

TERM PROJECT
 SAMPLE GRAPHICS
 Ian McHarg
 INVENTORY
 ANALYSIS
 DESIGN
 PRESENTATION
 ARCH 1250
 APPLIED ENVIRONMENTAL STUDIES
 NYC COLLEGE OF TECHNOLOGY

Inventory Presentation

Views, Access, Winds, Sun



Source: <http://www.whatarchitectsdo.org.uk/2010/08/case-study-gilfach-y-berthog.html>

TERM PROJECT

SAMPLE GRAPHICS

Ian McHarg

INVENTORY

ANALYSIS

DESIGN

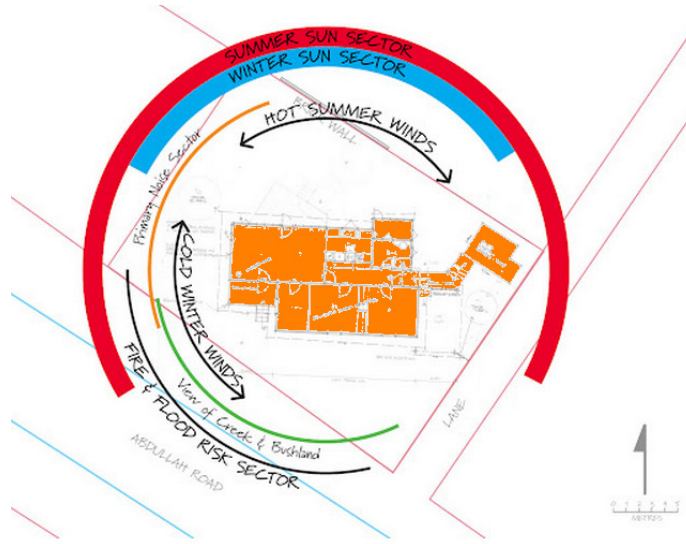
PRESENTATION

ARCH T250
APPLIED ENVIRONMENTAL STUDIES

NYC COLLEGE OF TECHNOLOGY

Inventory Presentation

Prevailing Winds and Sun Paths



Source: http://abdallahhouse.blogspot.com/2009_01_01_archive.html

TERM PROJECT

SAMPLE GRAPHICS

Ian McHarg

INVENTORY

ANALYSIS

DESIGN

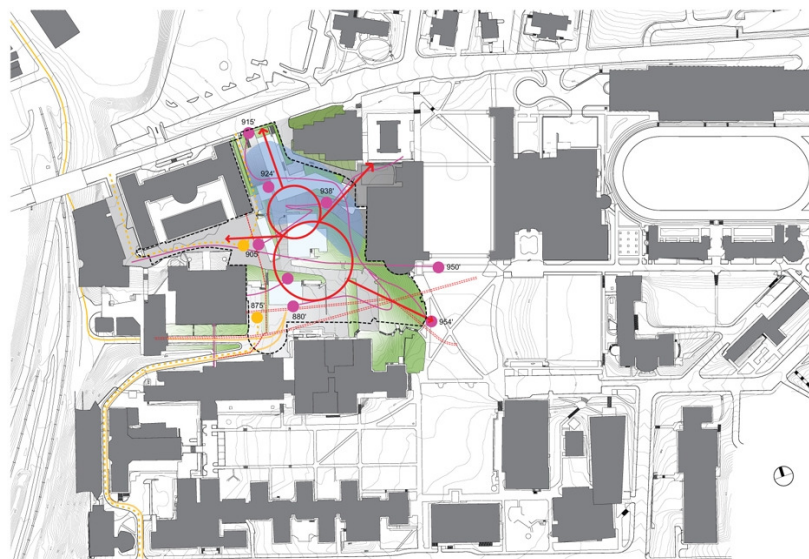
PRESENTATION

ARCH T250
APPLIED ENVIRONMENTAL STUDIES

NYC COLLEGE OF TECHNOLOGY

Carnegie Mellon University

Mack Scogin Merrill Elam Architects



Source: <http://www.whatarchitectsdo.org.uk/2010/08/case-study-gilfach-y-berthog.html>

TERM PROJECT

SAMPLE GRAPHICS

Ian McHarg

INVENTORY

ANALYSIS

DESIGN

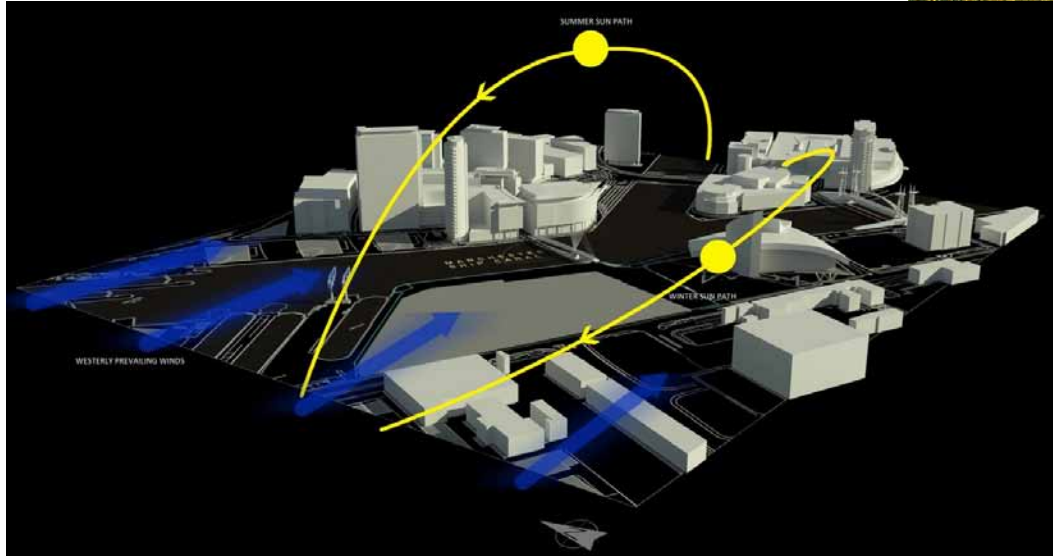
PRESENTATION
3D IMAGES

ARCH 1250
APPLIED ENVIRONMENTAL STUDIES

NYC COLLEGE OF TECHNOLOGY

Site Inventory – sun path & winds

3d Modeling and Animation



Source: http://saharfikouhi.blogspot.com/2011_02_01_archive.html

TERM PROJECT

SAMPLE GRAPHICS

Ian McHarg

INVENTORY

ANALYSIS

DESIGN

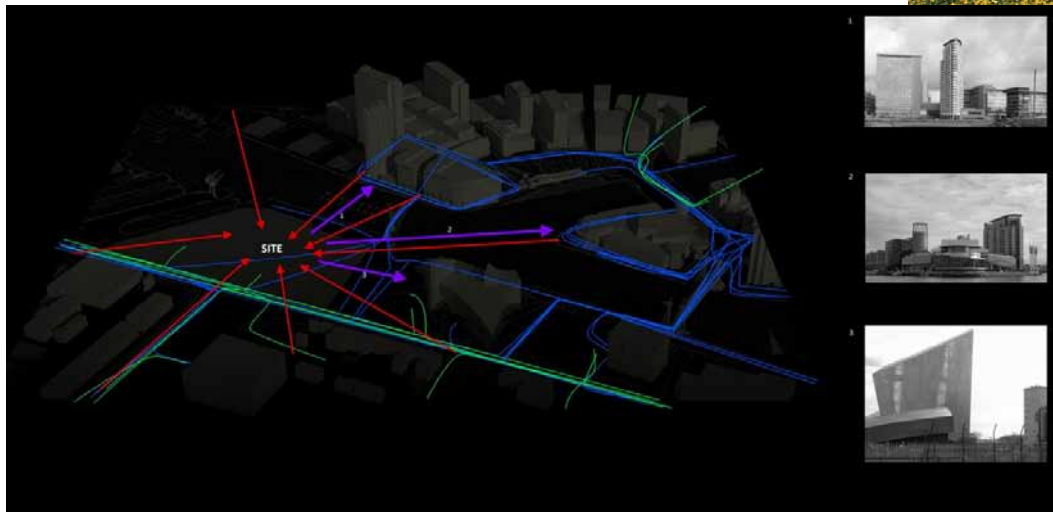
PRESENTATION
3D IMAGES

ARCH 1250
APPLIED ENVIRONMENTAL STUDIES

NYC COLLEGE OF TECHNOLOGY

Site Inventory – views & circulation

3d Modeling and Animation



Source: http://saharfikouhi.blogspot.com/2011_02_01_archive.html

TERM PROJECT

SAMPLE GRAPHICS

Ian McHarg

INVENTORY

ANALYSIS

DESIGN

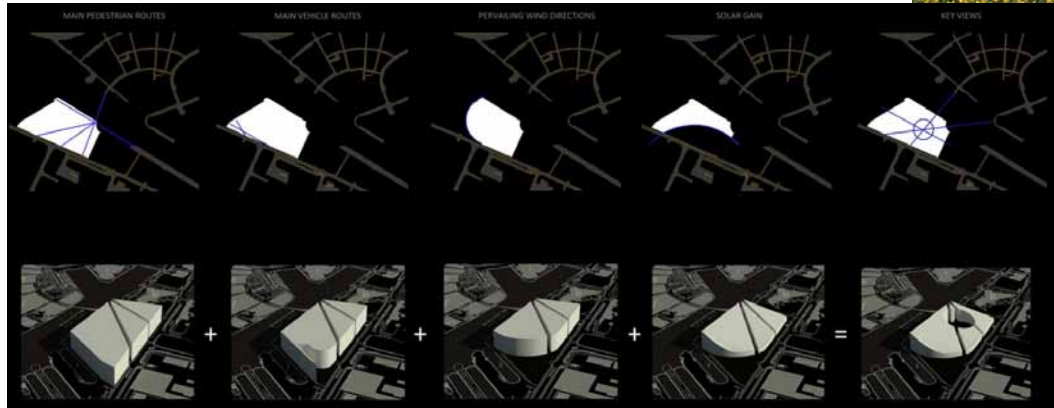
PRESENTATION
3D IMAGES

ARCH 1250
APPLIED ENVIRONMENTAL STUDIES

NYC COLLEGE OF TECHNOLOGY

Site Inventory – views & circulation

3d Modeling and Animation



Source: http://saharfikouhi.blogspot.com/2011_02_01_archive.html

TERM PROJECT

SAMPLE GRAPHICS

Ian McHarg

INVENTORY

ANALYSIS

DESIGN

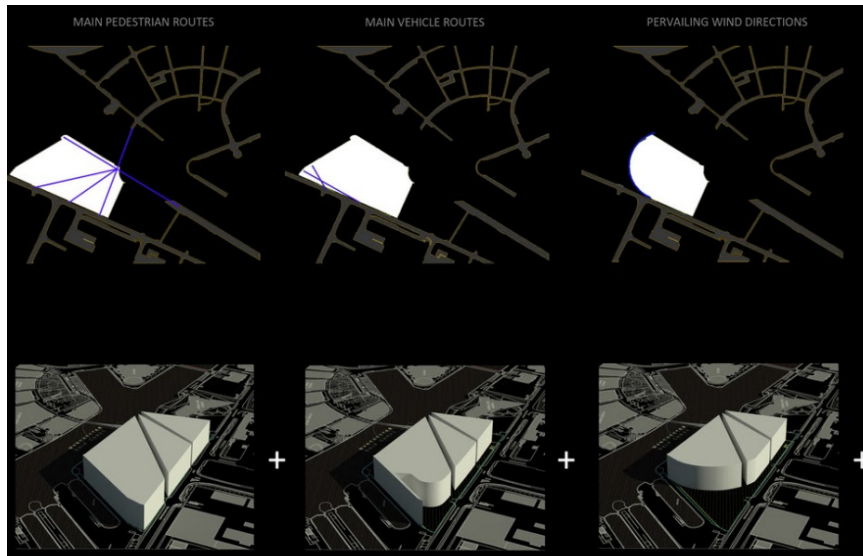
PRESENTATION
3D IMAGES

ARCH 1250
APPLIED ENVIRONMENTAL STUDIES

NYC COLLEGE OF TECHNOLOGY

Site Inventory – circulation & winds

3d Modeling and Animation



Source: http://saharfikouhi.blogspot.com/2011_02_01_archive.html

TERM PROJECT

SAMPLE GRAPHICS

Ian McHarg

INVENTORY

ANALYSIS

DESIGN

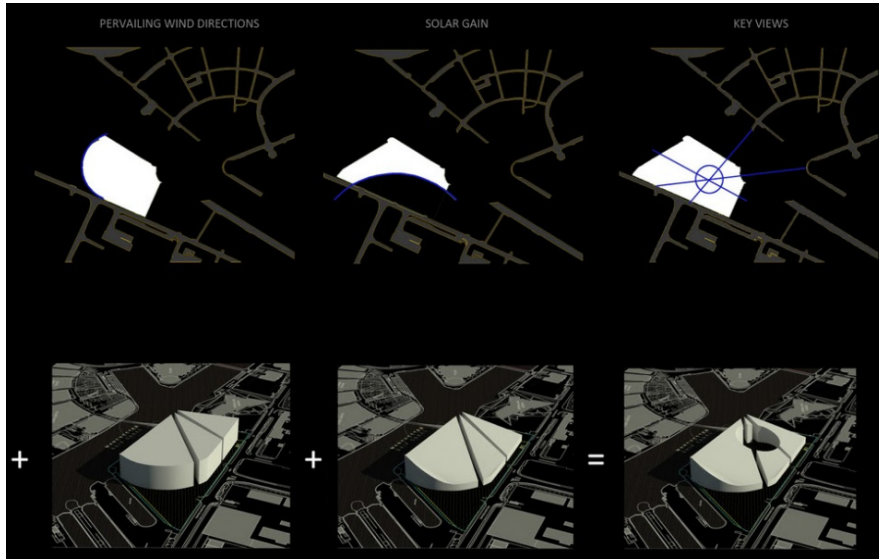
PRESENTATION
3D IMAGES

ARCH 1250
APPLIED ENVIRONMENTAL STUDIES

NYC COLLEGE OF TECHNOLOGY

Site Inventory – solar gain & key views

3d Modeling and Animation



Source: http://saharfikouhi.blogspot.com/2011_02_01_archive.html

TERM PROJECT

SAMPLE GRAPHICS

Ian McHarg

INVENTORY

ANALYSIS

DESIGN

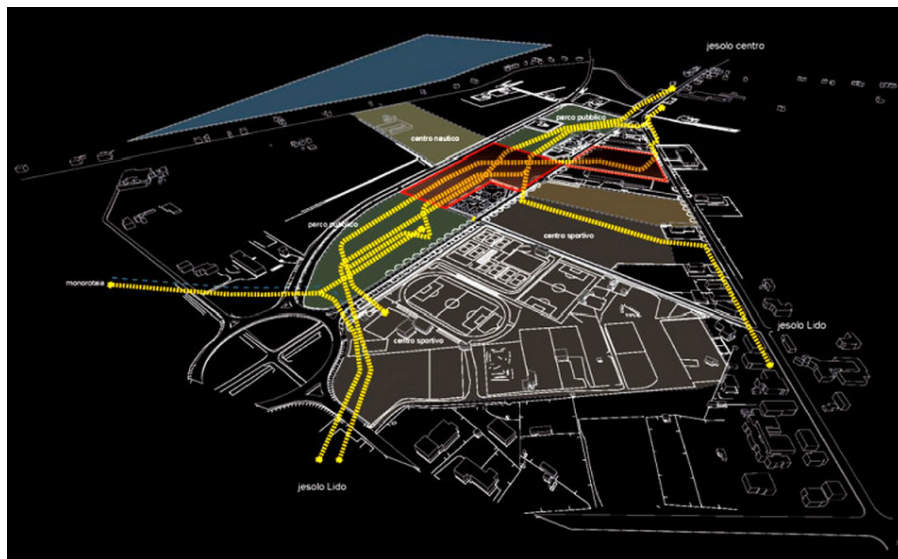
PRESENTATION
3D IMAGES

ARCH 1250
APPLIED ENVIRONMENTAL STUDIES

NYC COLLEGE OF TECHNOLOGY

Site Inventory – circulation

Jeselo Magica Shopping Mall & Office Complex
Zaha Hadid Architects



Source: <http://plusmood.com/2009/11/jesolo-magica-zaha-hadid-architects/>

TERM PROJECT

SAMPLE GRAPHICS

Ian McHarg

INVENTORY

ANALYSIS

DESIGN

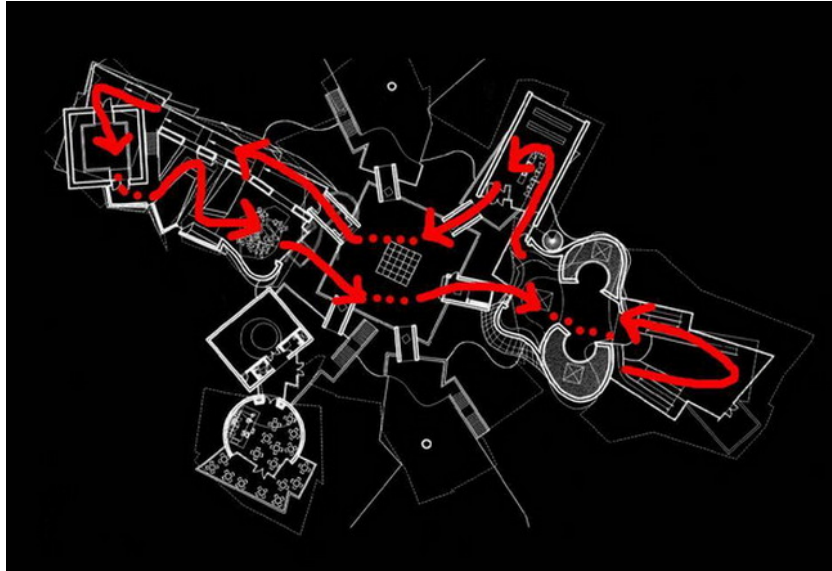
PRESENTATION

ARCH T250
APPLIED ENVIRONMENTAL STUDIES

NYC COLLEGE OF TECHNOLOGY

Site Inventory – circulation

Jose Antoio Gonzales Architects inc



Source: http://www.joseantoniogonzalez.com/2003-21_gp_panama.html

TERM PROJECT

SAMPLE GRAPHICS

Ian McHarg

INVENTORY

ANALYSIS

DESIGN

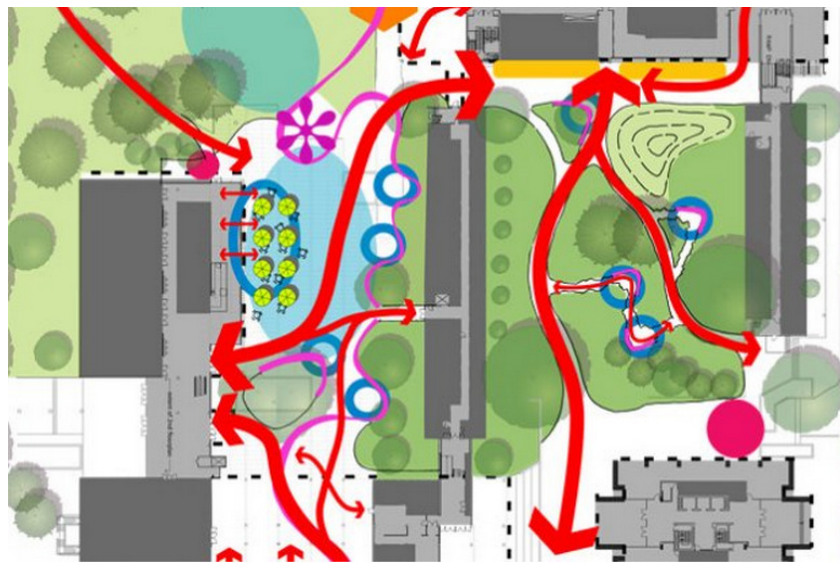
PRESENTATION

ARCH T250
APPLIED ENVIRONMENTAL STUDIES

NYC COLLEGE OF TECHNOLOGY

Site Inventory – circulation

Buchman Courtyards – Vancouver Canada

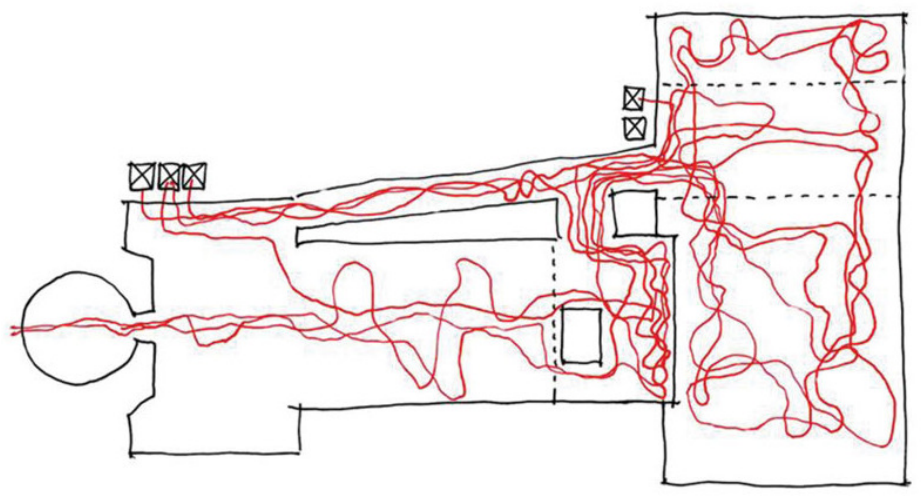


Source: http://www.architizer.com/en_us/projects/view/buchanan-courtyards-ubc/10544/

TERM PROJECT
SAMPLE GRAPHICS
Ian McHarg
INVENTORY
ANALYSIS
DESIGN
PRESENTATION
ARCH T250
APPLIED ENVIRONMENTAL STUDIES
NYC COLLEGE OF TECHNOLOGY

Site Inventory – circulation

Movement pattern tracings
SF Moma RoofTop Sculpture Garden
Conger Moss Guillard Landscape Architects

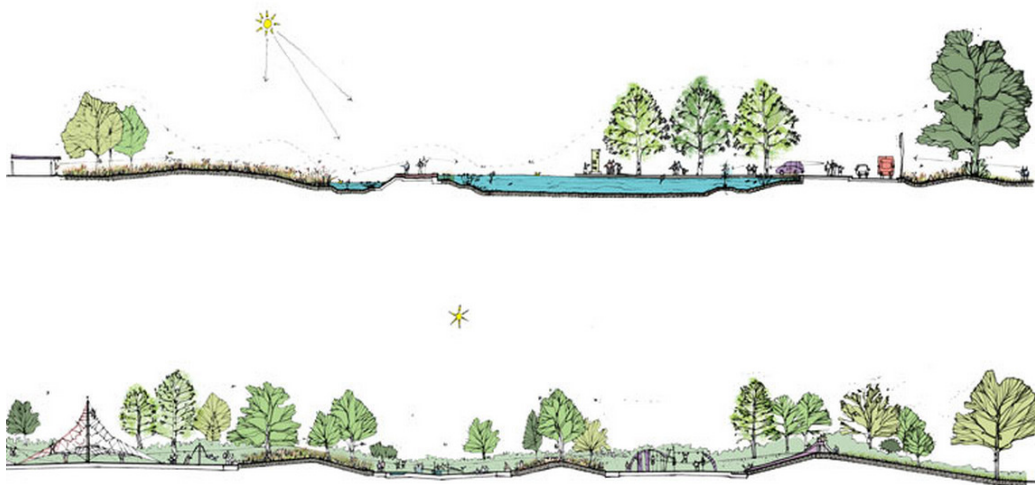


Source: <http://www.cmgsite.com/projects/sfmoma/>

TERM PROJECT
SAMPLE GRAPHICS
Ian McHarg
INVENTORY
ANALYSIS
DESIGN
PRESENTATION
ILLUSTRATIVE SECTIONS
ARCH T250
APPLIED ENVIRONMENTAL STUDIES
NYC COLLEGE OF TECHNOLOGY

Presentation – Site Sections

ILLUSTRATIVE SECTIONS



Source: http://www.grant-associates.uk.com/upload/PPS_SCUNTHORPE_03A_1.jpg

TERM PROJECT
SAMPLE
GRAPHICS

Ian McHarg

INVENTORY

ANALYSIS

DESIGN

PRESENTATION

ILLUSTRATIVE
SECTIONS

ARCH 1250
APPLIED
ENVIRONMENTAL
STUDIES

NYC COLLEGE
OF TECHNOLOGY

Presentation – Site Sections



Source: http://www.grant-associates.uk.com/upload/H_ICON_02A_2.jpg

ARCH 1250 APPLIED ENVIRONMENTAL STUDIES

SITE GRAPHICS *for* *Inventory, analysis and design*

Prof. Paul C. King, RA, AIA, ARA
Assistant Professor
New York City College of Technology