

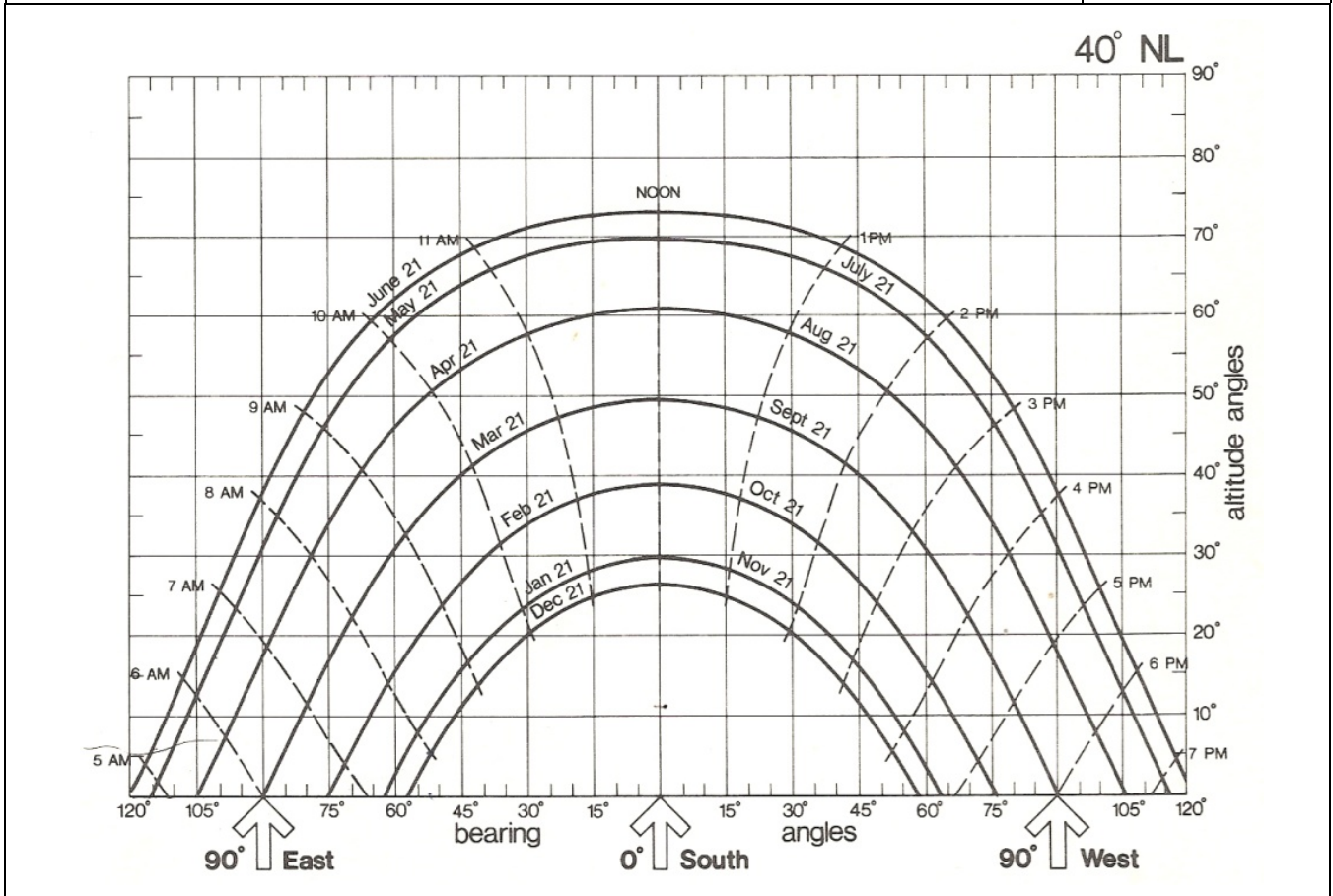


Name \_\_\_\_\_

## Sun Chart for 40 degrees North Latitude

Answer each of the following questions using both of the charts

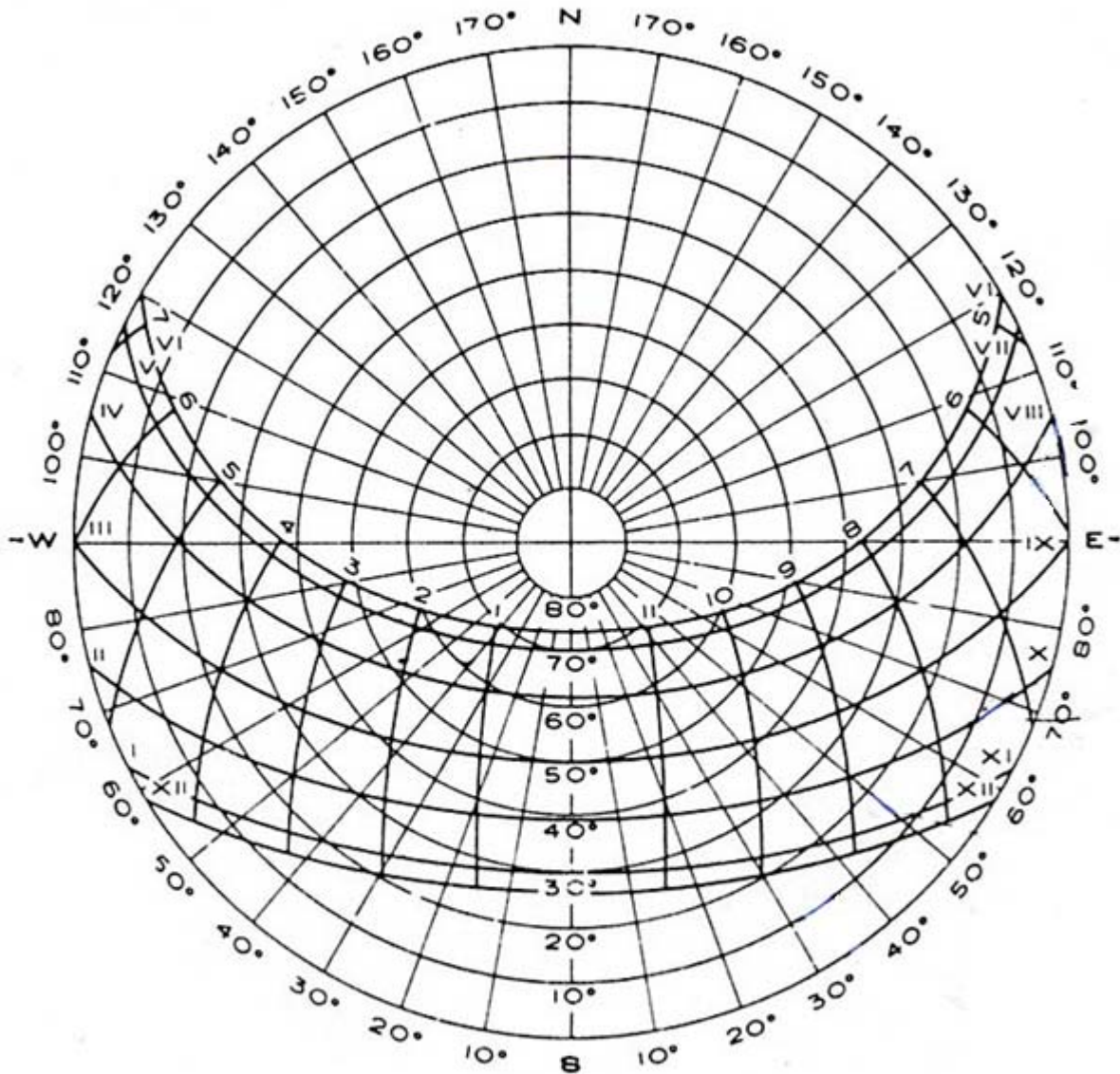
1. What time does the sun rise on October 21?	
2. What is the altitude of the sun on December 21st at noon?	
3. How does the sun path on March 21 compare to Sept 21?	
4. At 4pm on April 21st what is the altitude of the sun?	
5. What time does the sun set on the day of the summer solstice?	
6. What is the bearing of the sun as it rises on the equinox?	
7. What day has the greatest number of daylight hours? How many?	





Name \_\_\_\_\_

## Sun Chart for 40 degrees North Latitude



### SUN CHART FOR 40° NORTH LATITUDE

***For each of the charts pay attention to how the directions of east and west and the direction that the sun travels are indicated. Are they the same?***