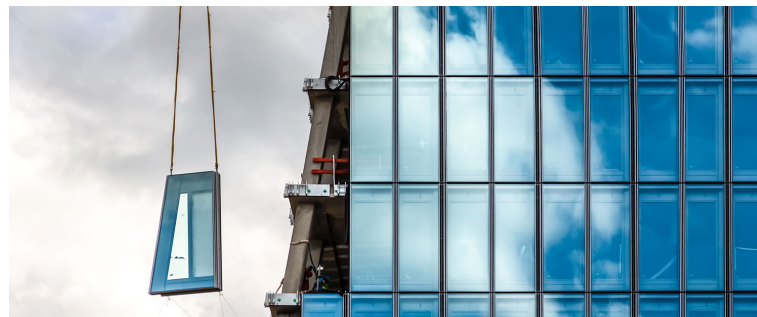
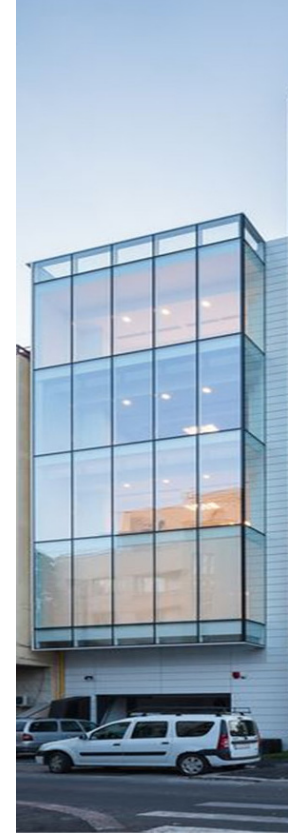


UNITIZED CURTAIN WALL

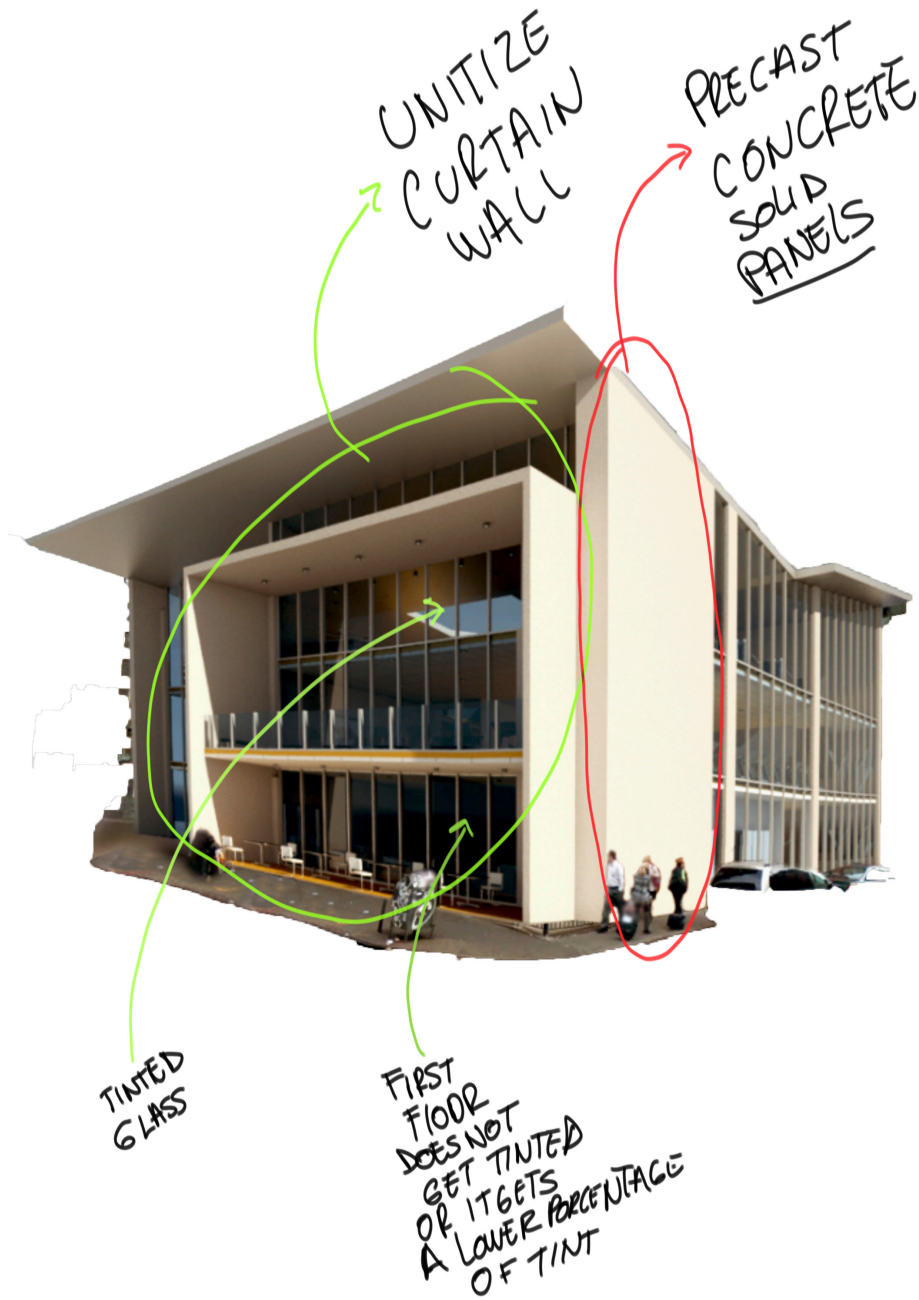
Is a type of frame-supporting curtain wall consisting of framing components and panel materials. Such framing components and panel materials are assembled into a single curtain wall unit at the factory. Then, they are transported to construction sites for installation.

this is a cheap way to make curtain walls and they are also efficient than if they were made on the site.

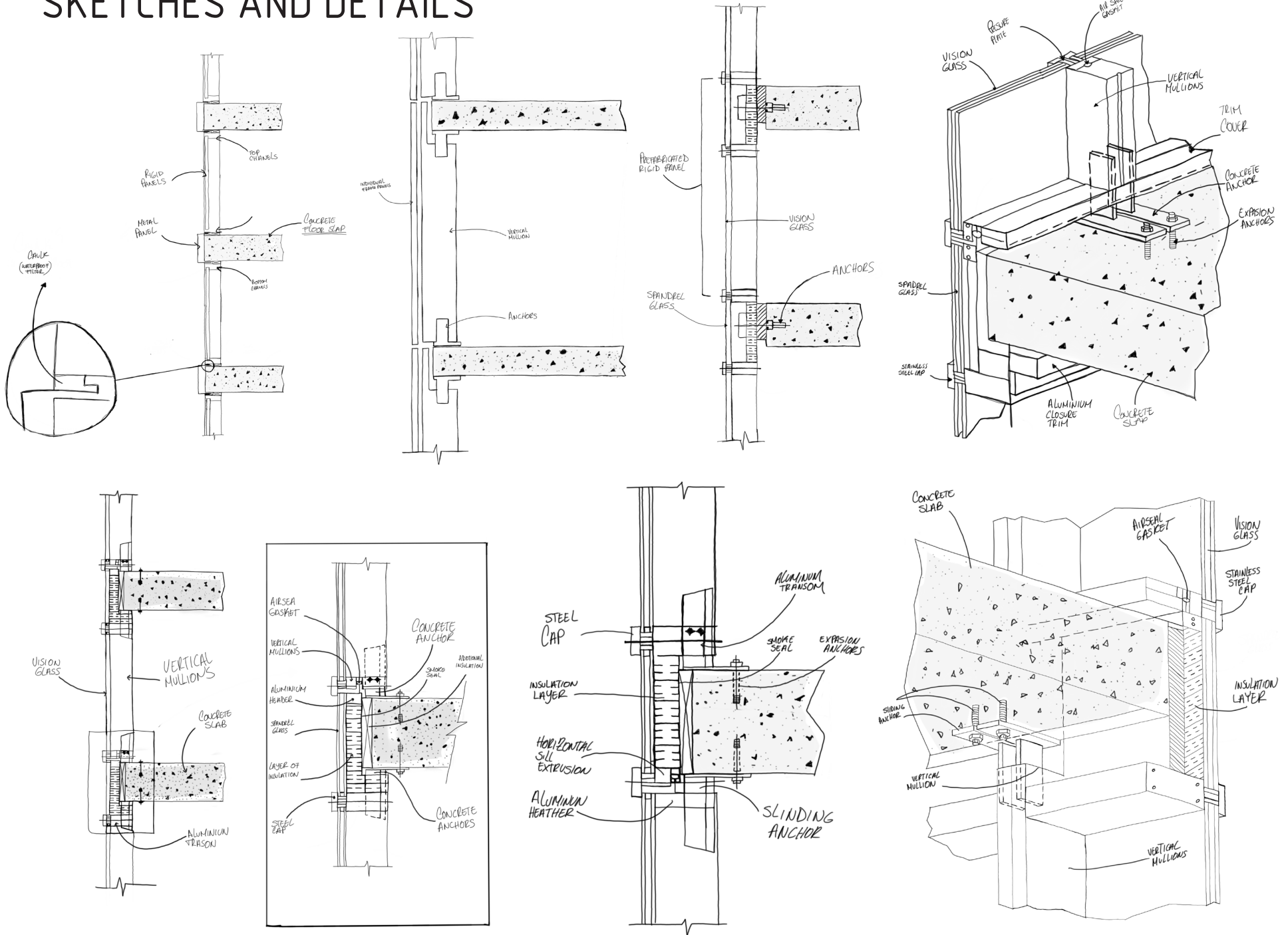
The panels can be made of various materials, including glass, metal, stone, and artificial materials



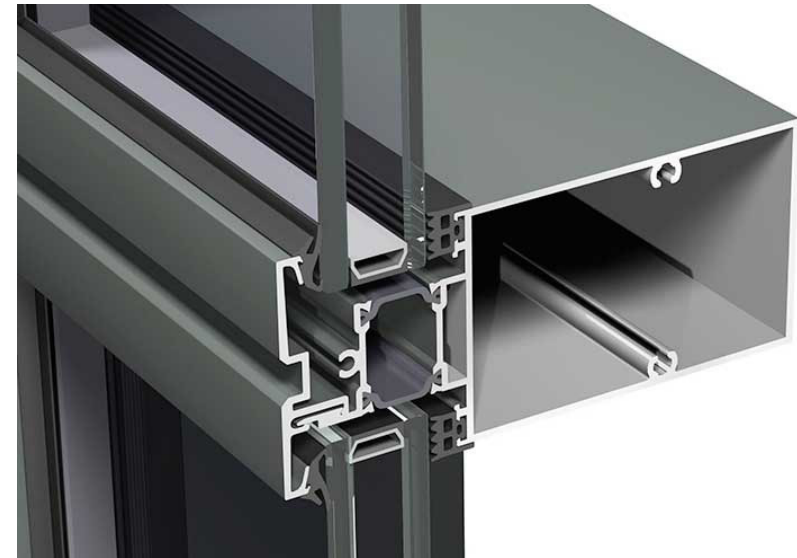
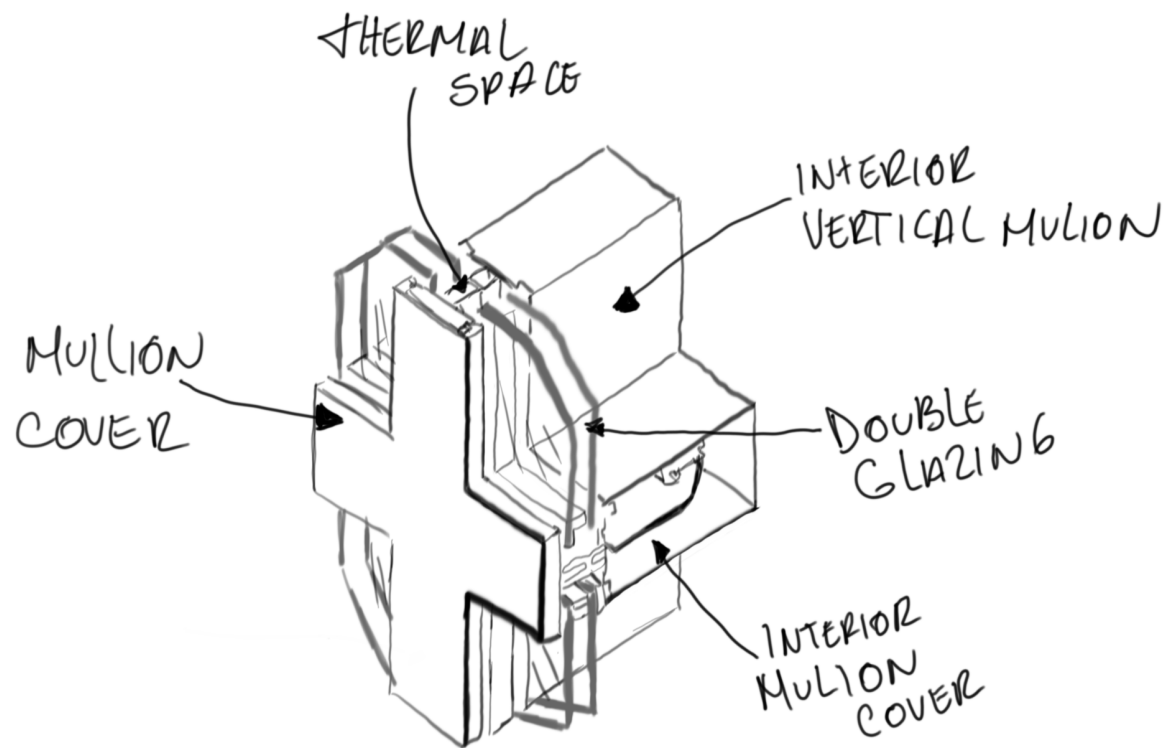
APPLICATION TO THE MODEL



SKETCHES AND DETAILS



SKETCHES AND DETAILS



Captured

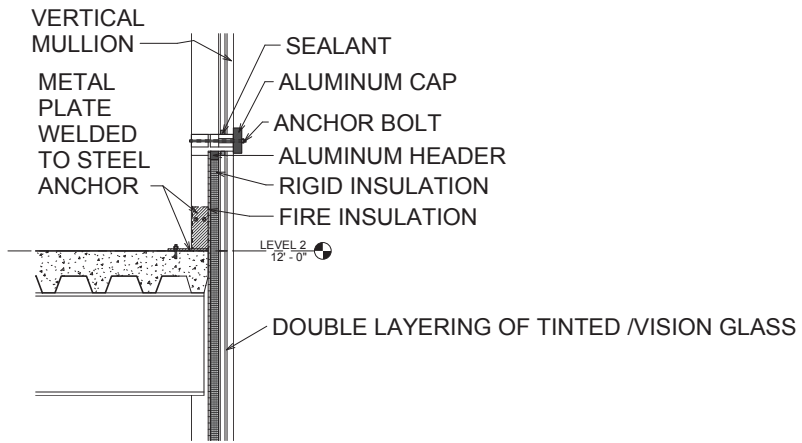


4-sided SSG

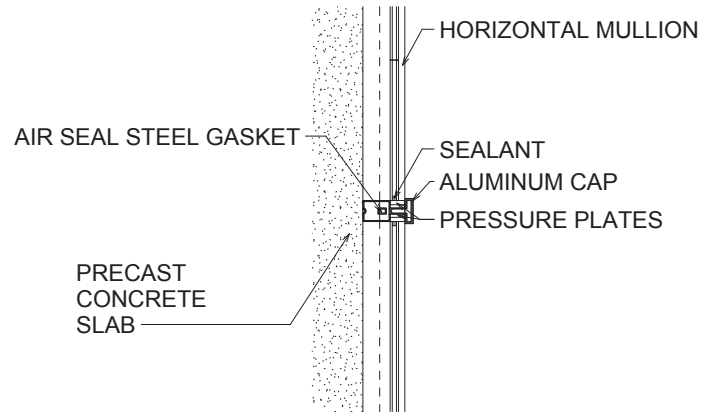


Vertical SSG

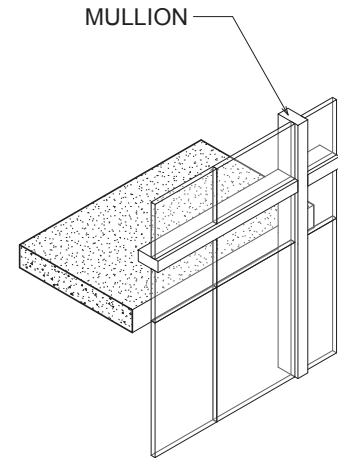




④ DETAIL UNITIZE CURTAIN WALL
1 1/2" = 1'-0"



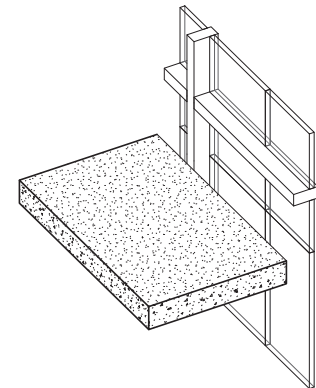
③ PLAN VIEW MULLION
1 1/2" = 1'-0"



⑤ ISO OF UNITIZE WALL SYSTEM OUTSIDE



ELEVATION OF A UNITIZE CURTAIN WALL SYSTEM
① WALL SYSTEM
1 1/2" = 1'-0"



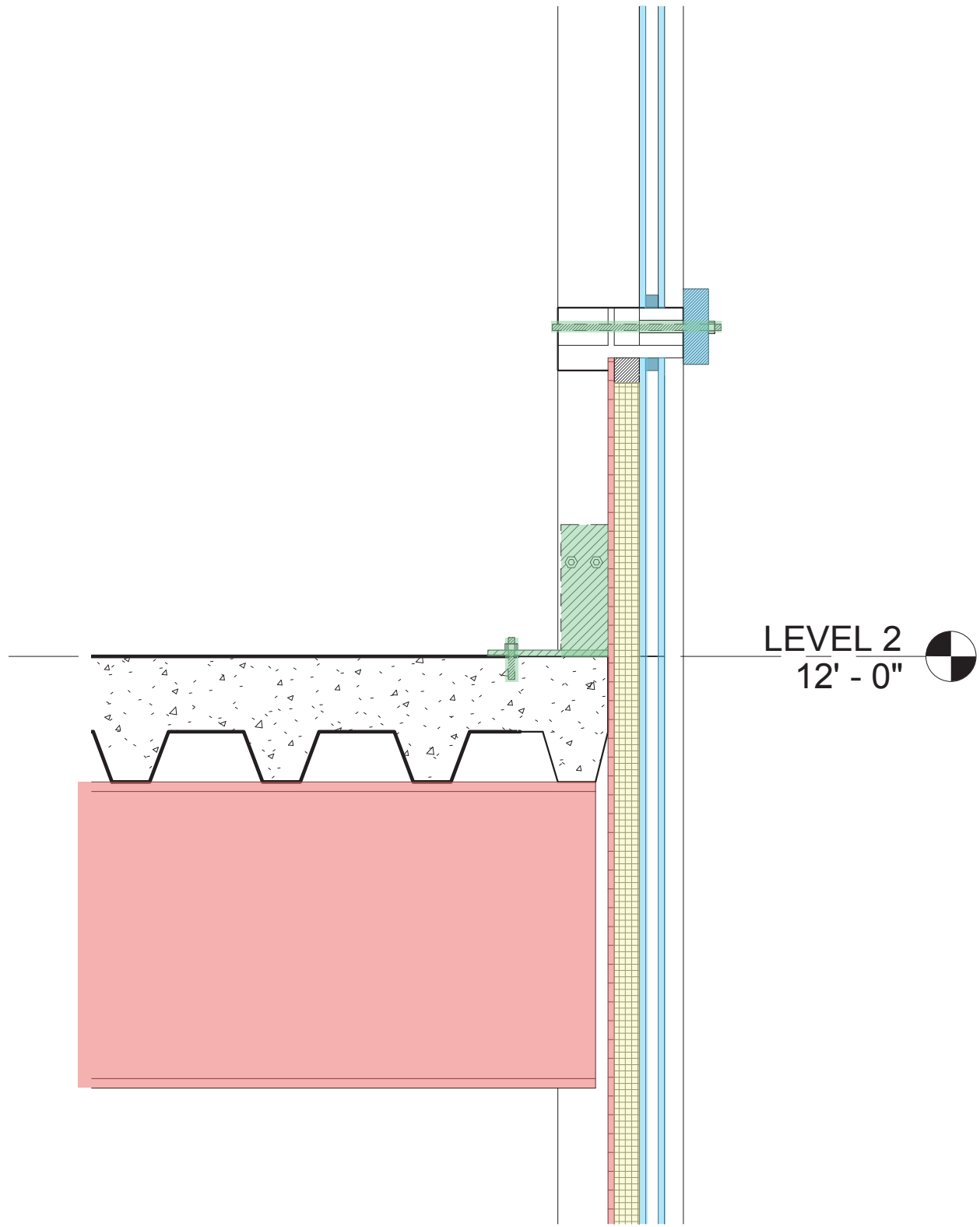
② ISO OF UNITIZE WALL SYSTEM INSIDE

WATER PROOFING

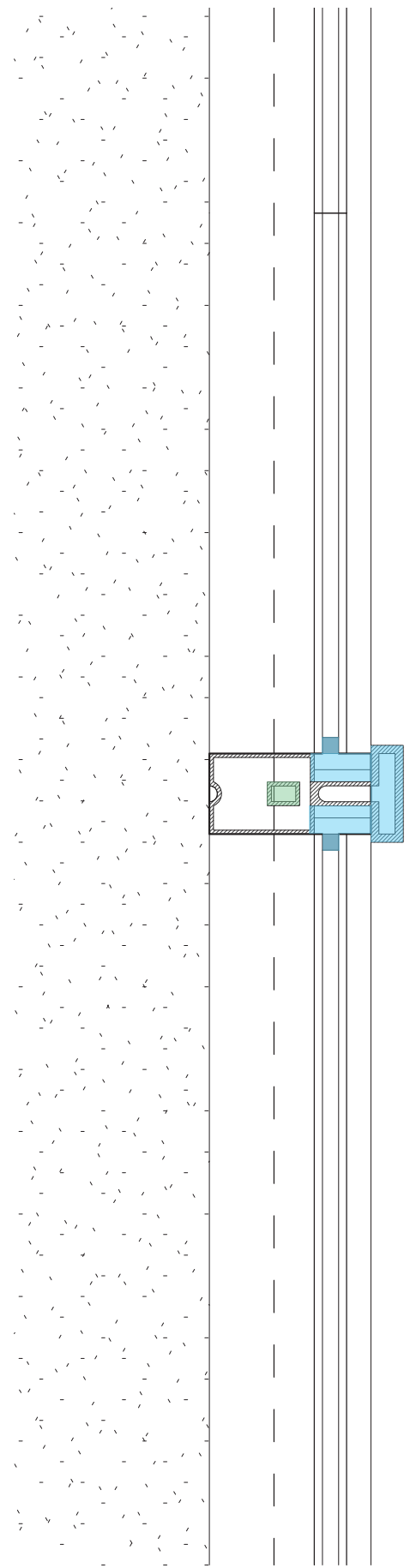
STRUCTURE

FIRE STOPING

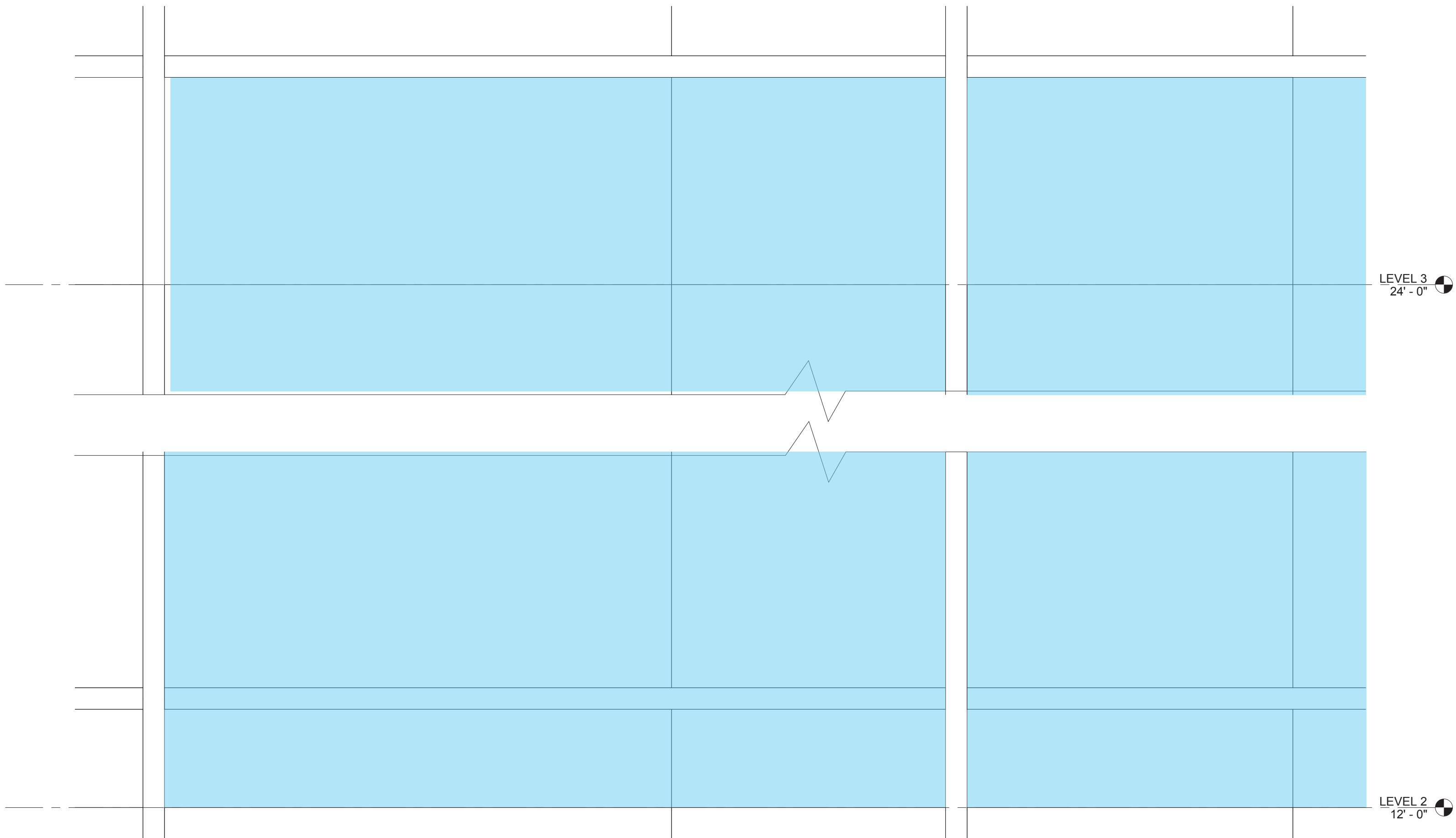
THERMAL



④ DETAIL UNITIZE CURTAIN WALL
1 1/2" = 1'-0"



③ PLAN VIEW MULLION
1 1/2" = 1'-0"



① ELEVATION OF A UNITIZE CURTAIN
WALL SYSTEM
1 1/2" = 1'-0"

⑤

②

TINTED WINDOWS

window tint film is an inexpensive, attractive, and convenient way to improve the quality of interior space. film promotes privacy while still allowing plenty of light and visibility inside. It cuts down on glare. It helps keep the heat out during the summer months but keeps it in during the winter, thus reducing the costs of air conditioning and heating. In addition, it blocks sunlight, and some window-tinting film can also block dangerous ultraviolet rays.

There are different types of tints that can be applied to the windows such as:

- Dyed window tint film
- Metallized film
- Carbon window tint film
- Ceramic film

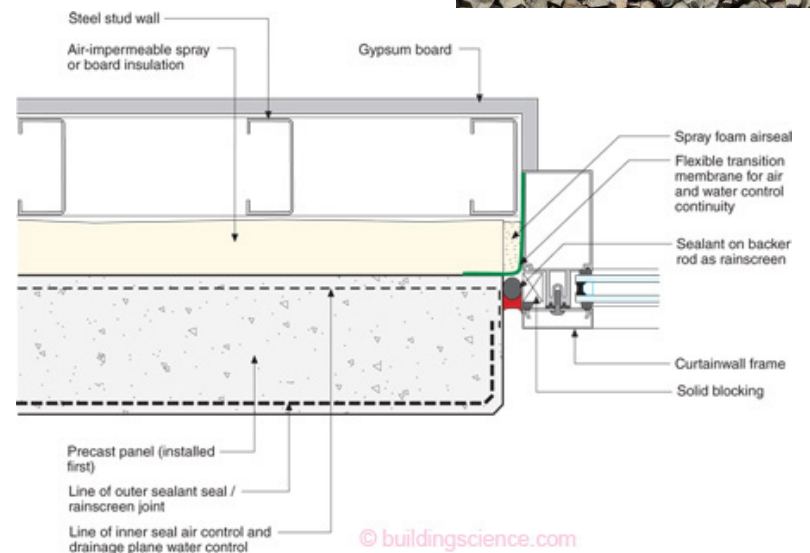
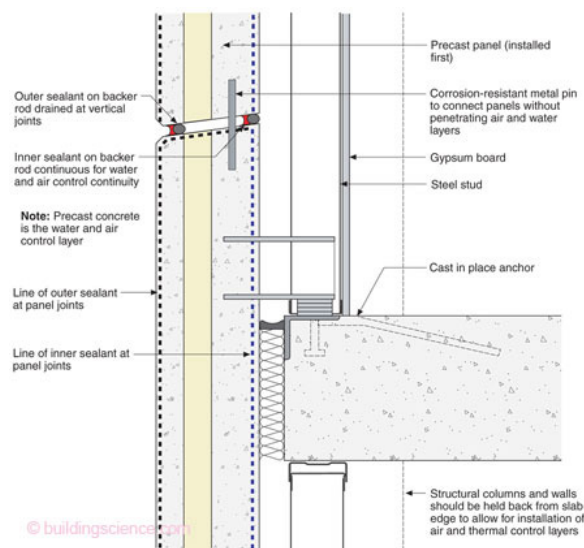
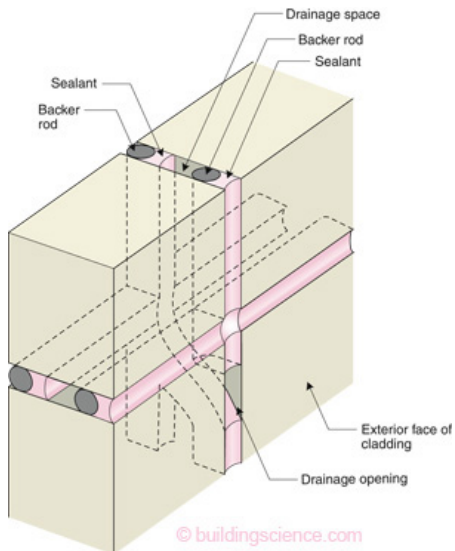
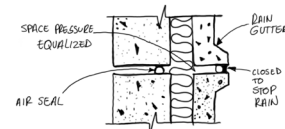
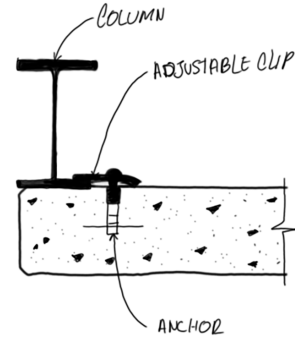
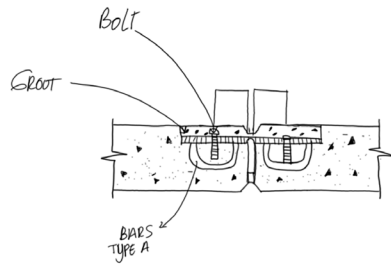
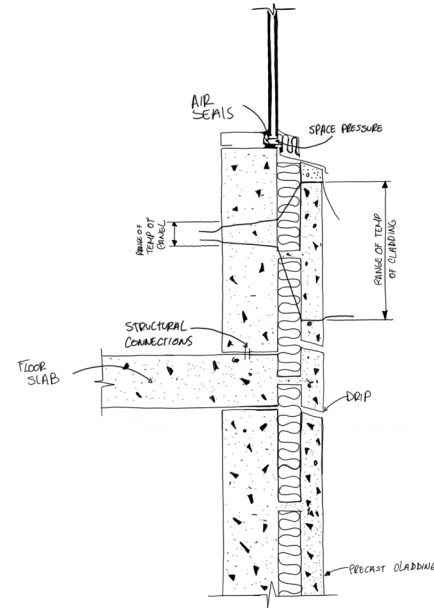
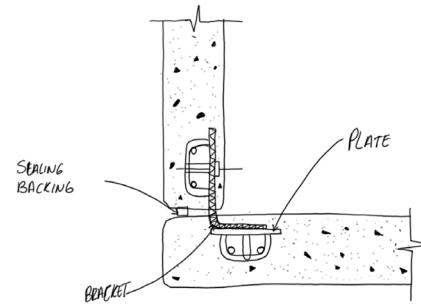
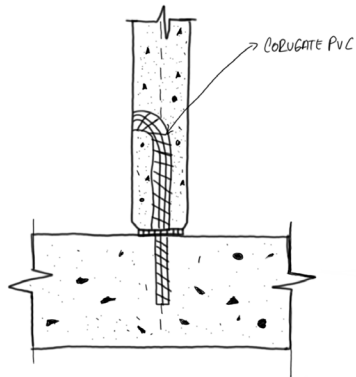


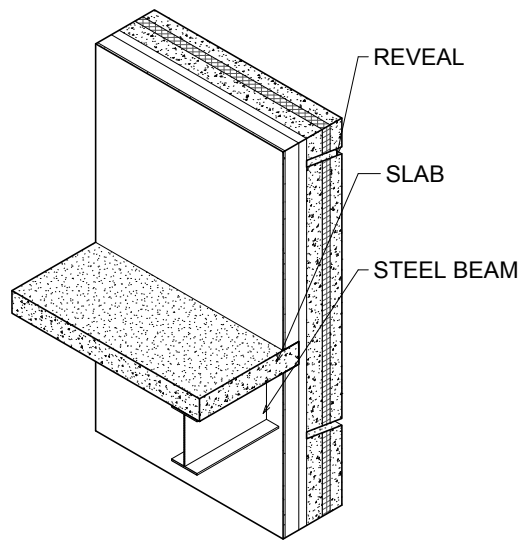
PRECAST CONCRETE

Common use of precast concrete for building envelopes, These types of precast concrete panels do not transfer vertical loads but simply enclose the space. They are only designed to resist wind, seismic forces generated by their own weight, and forces required to transfer the weight of the panel to the support. Common cladding units include wall panels, window wall units, spandrels, mullions, and column covers. These units can usually be removed individually if necessary.

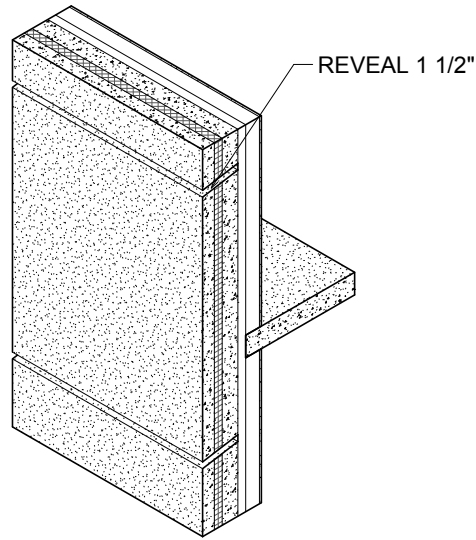


SKETCHES AND DETAILS



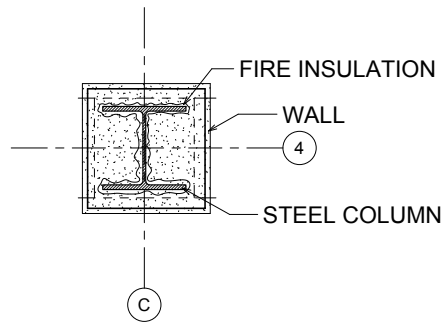


ISO PRECAST CONCRETE SANDWICH
PANEL INSIDE

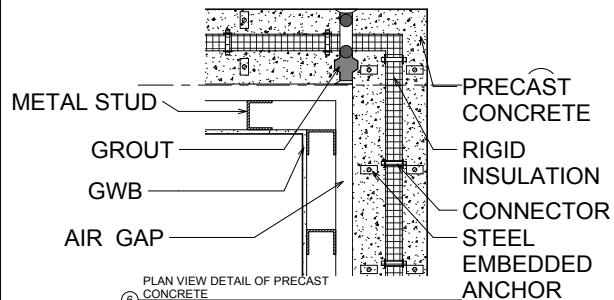


ISO PRECAST CONCRETE SANDWICH
PANEL OUTSIDE

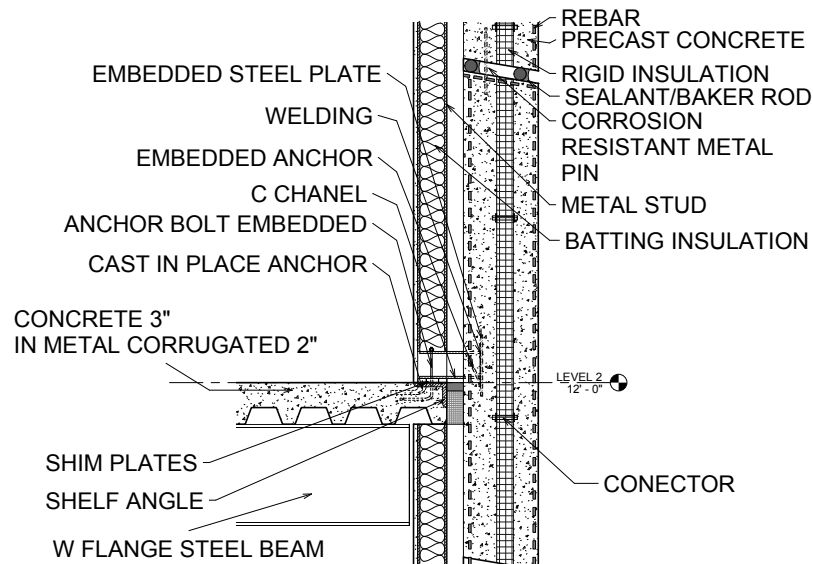
PRECAST
CONCRETE WITH
6' REVEALS
APART FROM
EACH OTHER



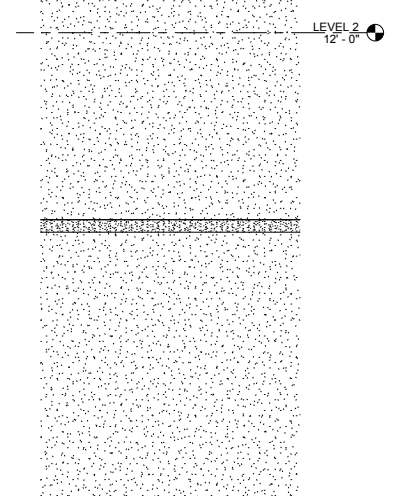
STEEL COLUMN DETAIL MEASUREMENTS
1 1/2" = 1'-0"



PLAN VIEW DETAIL OF PRECAST
CONCRETE
1 1/2" = 1'-0"

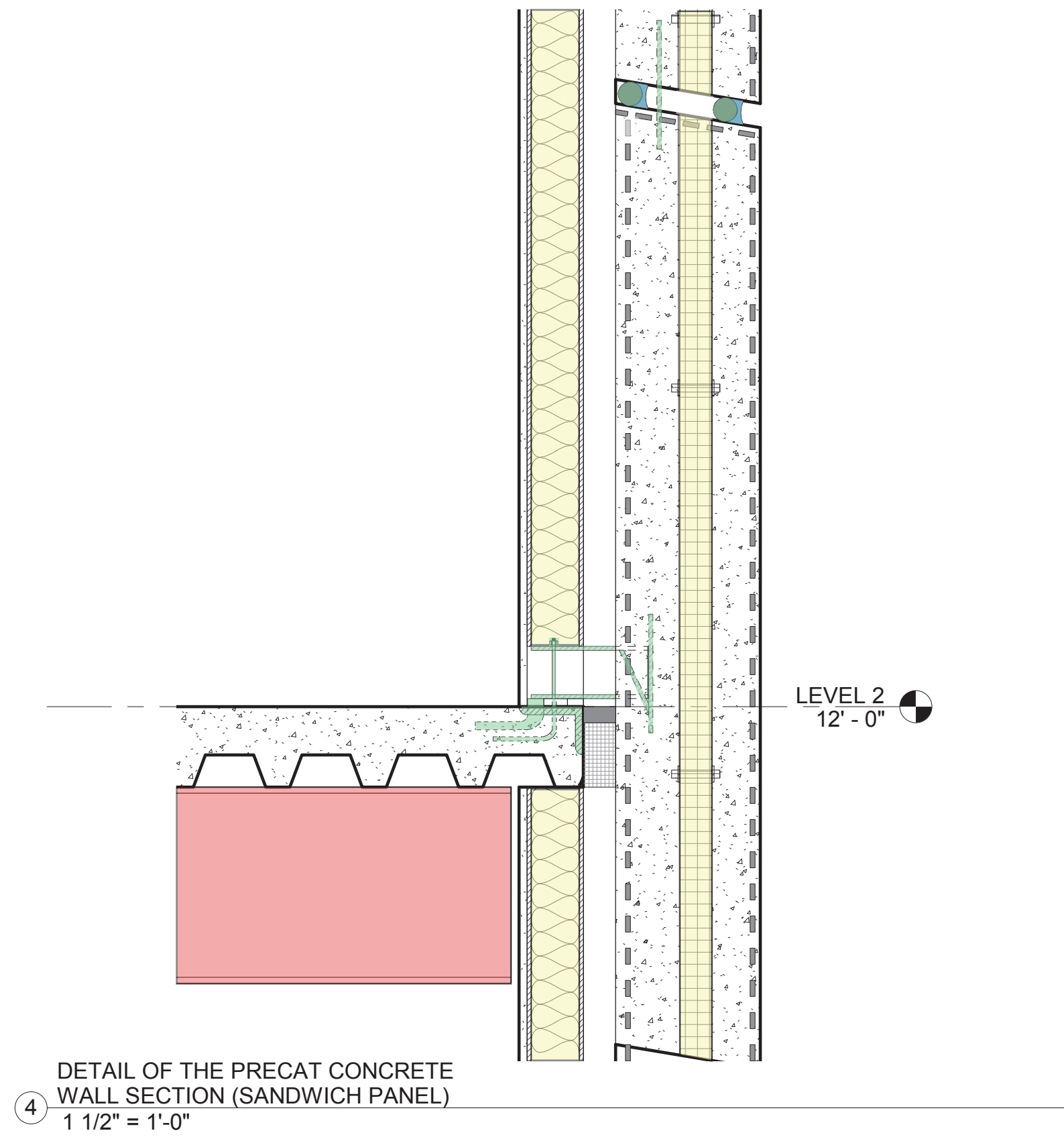
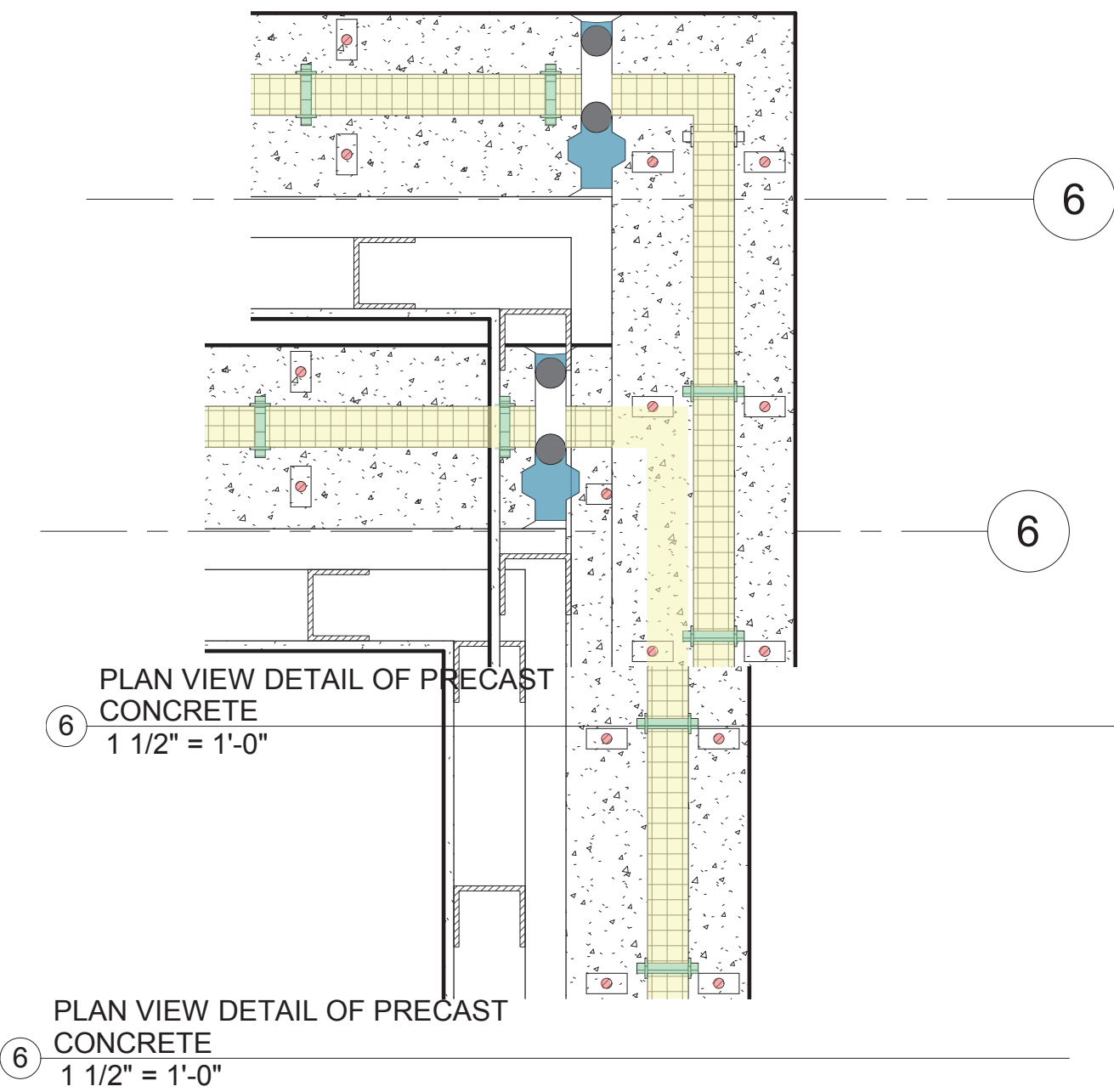
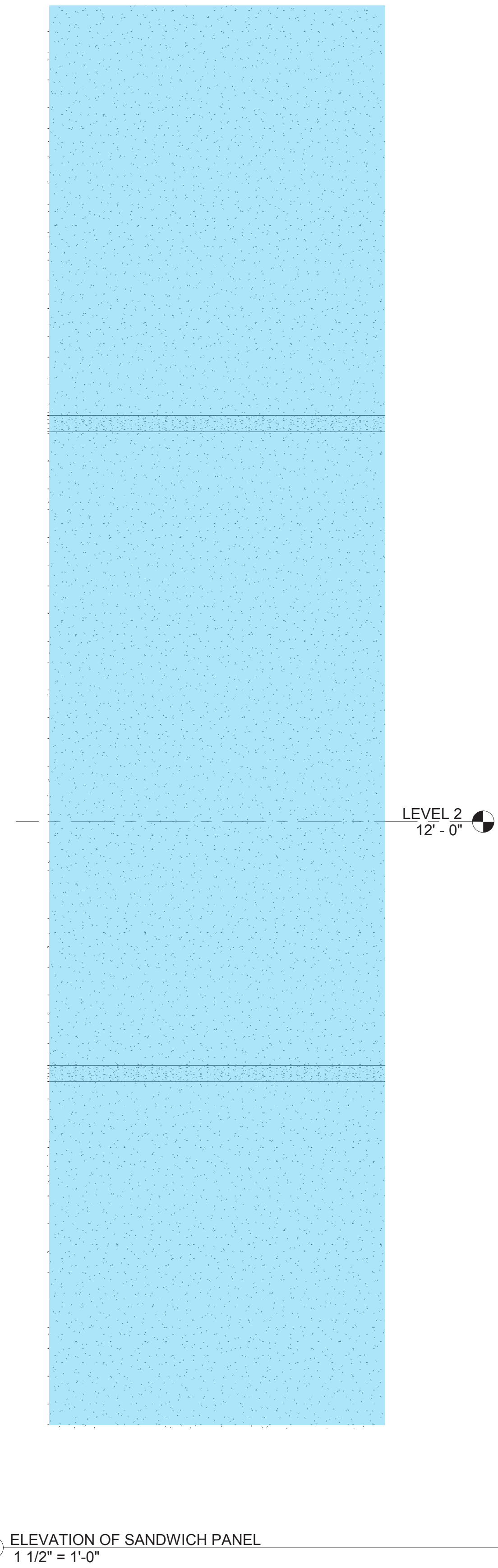
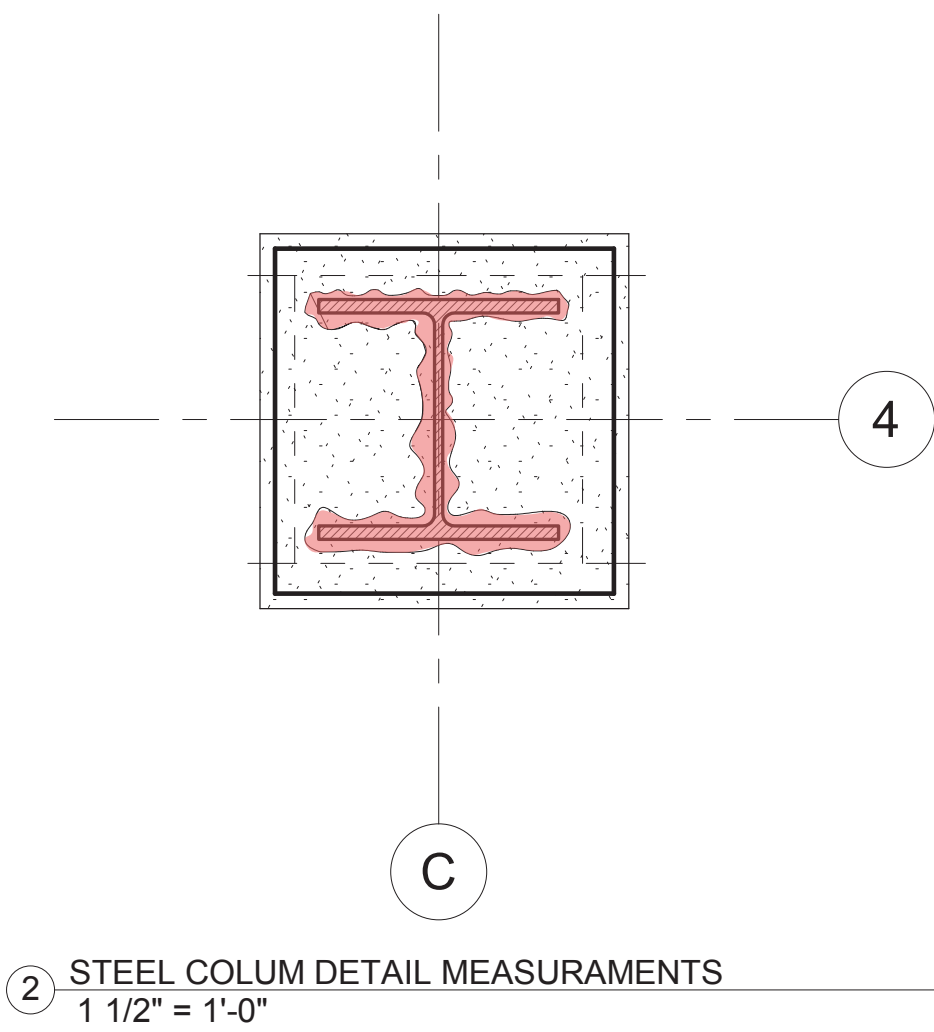


DETAIL OF THE PRECAST CONCRETE
WALL SECTION (SANDWICH PANEL)
1 1/2" = 1'-0"



ELEVATION OF SANDWICH PANEL
1 1/2" = 1'-0"

WATER PROOFING
STRUCTURE
FIRE STOPING
THERMAL



CITED WORKS

- <http://thespokaneshop.com/spokane-window-tinting/different-types-window-tint-film>
- <https://www.wbdg.org/guides-specifications/building-envelope-design-guide/wall-systems/precast-concrete-wall-systems>
- https://wxmq.en.alibaba.com/product/549534924-213345826/Unitized_Curtain_Wall.html
- <https://www.google.com/patents/US7827746>
- https://openlab.citytech.cuny.edu/kingbtech3fa17/files/2017/11/ARCH2330_CURTAIN-WALL-SOLID-FACADE-PRESENTATION_EVELYN-RICHARDSON.pdf
- <https://buildingscience.com/documents/insights/bsi054-risky-business-high-risk-walls#Fig04b>
- <https://courses.cit.cornell.edu/arch262/notes/11b.html>
- <http://www.pinsdaddy.com/precast-concrete-wall-panel-details>