

- New Levels
- Interior Walls
  - Across
  - Lower Half
    - Draw
    - Position
  - Upper Half
    - Draw
    - Position
- Confirm Dimensions

- Toilet & Chase
  - Draw & Split
  - Plumbing Chase
  - Create/Cleanup
  - Split/Cleanup

- Doors
  - Single-Vision
  - Double-Glass

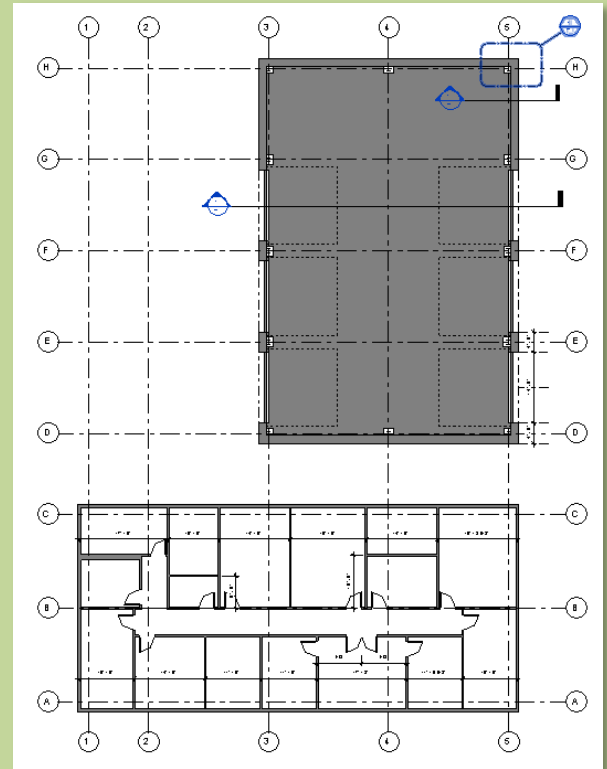
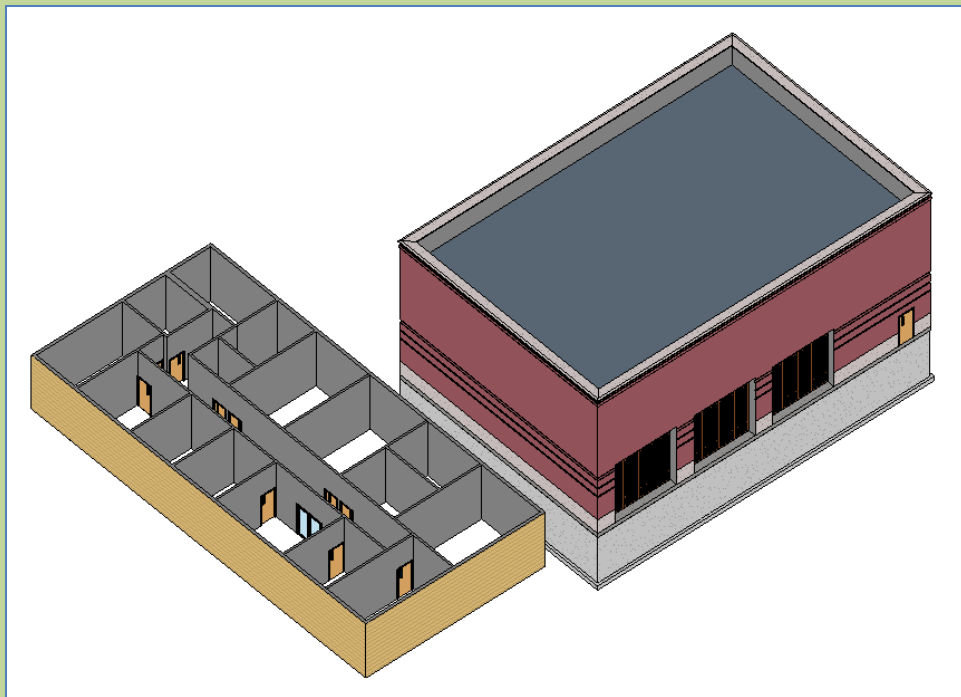
- Review
- Add Display Filters
  - 2-HR
  - 1-HR
  - Non-Rated
  - Exterior
  - Discrepancy
  - Corrected

- View Template
  - Create & Apply

Wrap Up

Revit Introduction

# Bunkhouse Walls and Doors



- New Levels
- Interior Walls
  - Across
  - Lower Half
    - Draw
    - Position
  - Upper Half
    - Draw
    - Position
- Confirm Dimensions
- Toilet & Chase
  - Draw & Split
  - Plumbing Chase
  - Create/Cleanup
  - Split/Cleanup

- Doors
  - Single-Vision
  - Double-Glass

- Review
- Add Display Filters

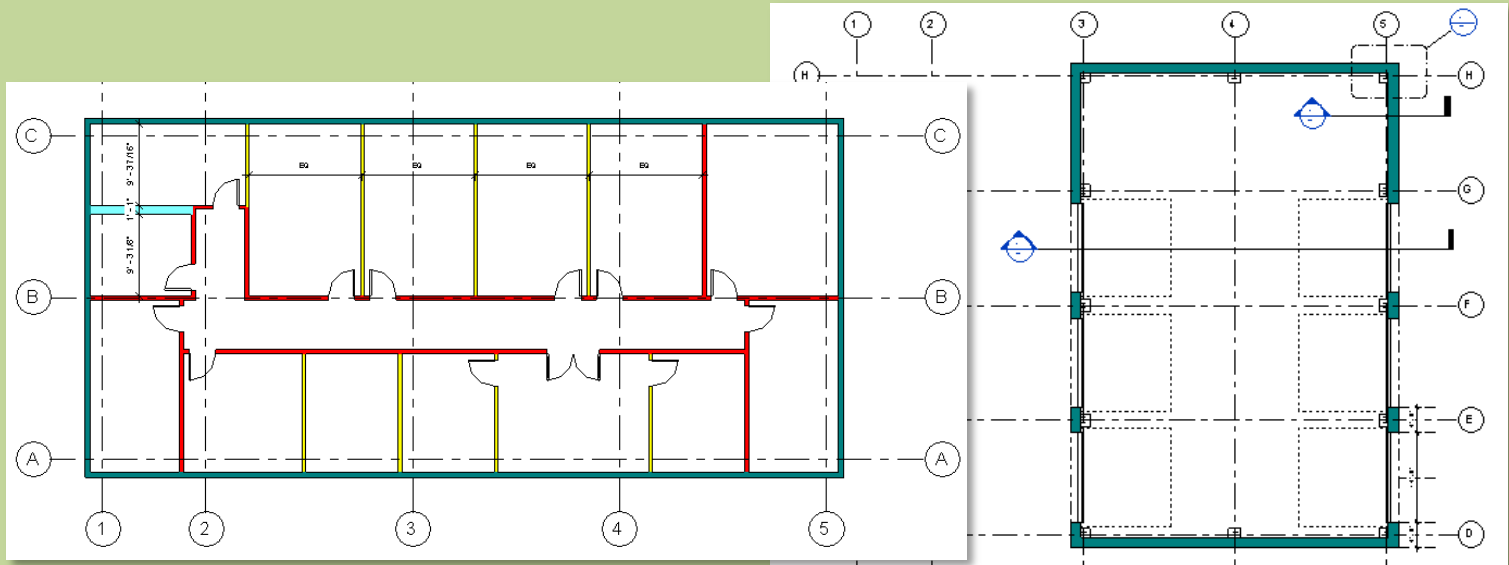
- 2-HR
- 1-HR
- Non-Rated
- Exterior
- Discrepancy
- Corrected

- View Template
  - Create & Apply

Wrap Up

Revit Introduction

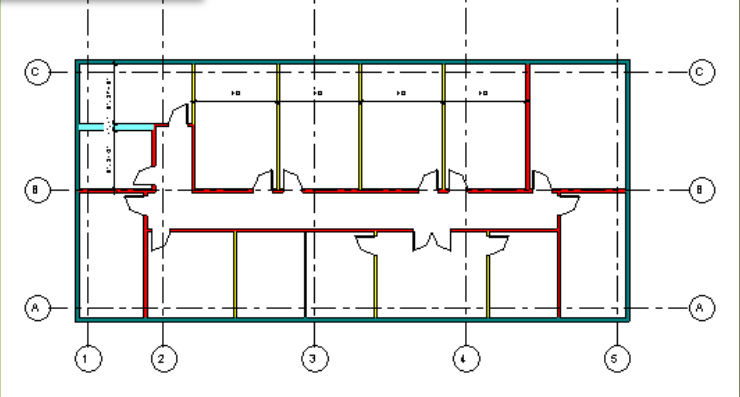
# Add Display Filter to Show Rated walls in color



## • Color Code Walls by Fire Rating

Visibility/Graphic Overrides for Floor Plan: MAIN

| Model Categories               |                                     | Annotation Categories |          | Analytical Categories |                          |
|--------------------------------|-------------------------------------|-----------------------|----------|-----------------------|--------------------------|
| Name                           | Visibility                          | Lines                 | Patterns | Half-tone             |                          |
| Interior (2-HR)                | <input checked="" type="checkbox"/> |                       |          |                       | <input type="checkbox"/> |
| Interior (1-HR)                | <input checked="" type="checkbox"/> |                       |          |                       | <input type="checkbox"/> |
| Interior Not (1 OR 2-HR) Rated | <input checked="" type="checkbox"/> |                       |          |                       | <input type="checkbox"/> |
| Exterior                       | <input checked="" type="checkbox"/> |                       |          |                       | <input type="checkbox"/> |



New Levels

Interior Walls

- Across
- Lower Half
  - Draw
  - Position
- Upper Half
  - Draw
  - Position
- Confirm Dimensions

Toilet & Chase

- Draw & Split
- Plumbing Chase
- Create/Cleanup
- Split/Cleanup

Doors

- Single-Vision
- Double-Glass

Review

Add Display Filters

- 2-HR
- 1-HR
- Non-Rated
- Exterior
- Discrepancy
- Corrected

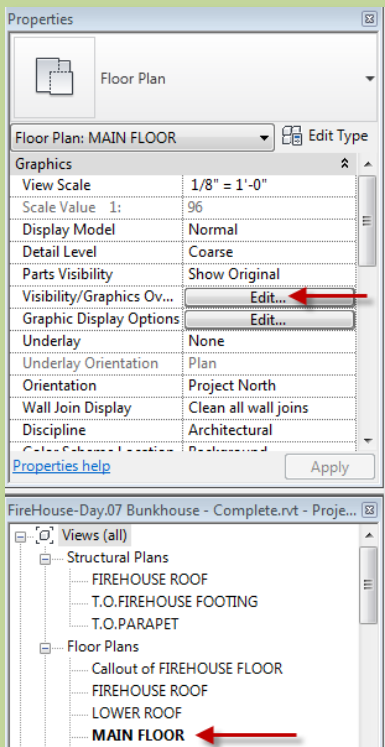
View Template

- Create & Apply

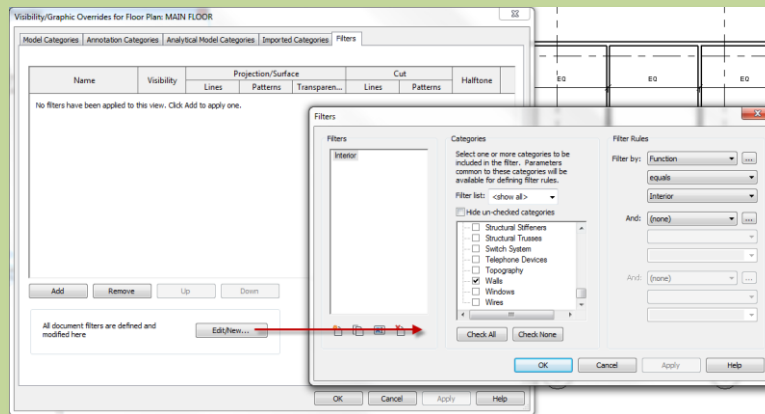
Wrap Up

Revit Introduction

# Add Display Filter : Create New Filter (2-HR)

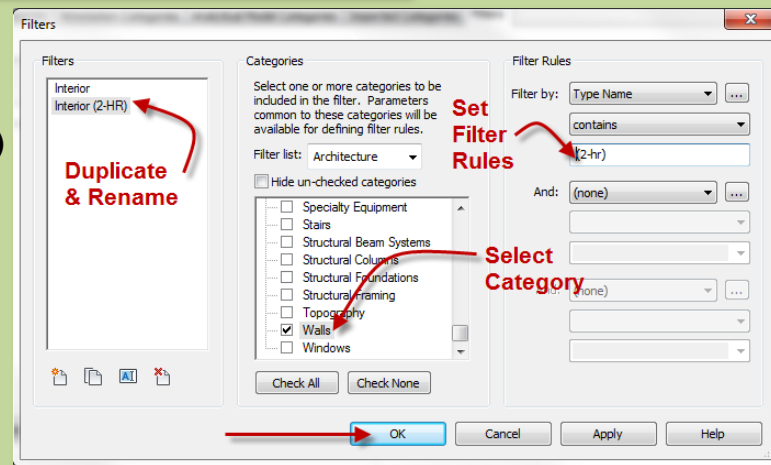


- Select View : Main Floor
- Visibility/Graphics Overrides > Edit



- Filter Edit/New

- Highlight
- Interior > Duplicate
- Rename Interior (2-HR)



- Filters
- Category > Walls
- Filter Rules
- Type Name > Contains > (2-HR)
- OK

New Levels

Interior Walls

- Across
- Lower Half
  - Draw
  - Position
- Upper Half
  - Draw
  - Position
- Confirm Dimensions

Toilet & Chase

- Draw & Split
- Plumbing Chase
- Create/Cleanup
- Split/Cleanup

Doors

- Single-Vision
- Double-Glass

Review

Add Display Filters

- 2-HR
- 1-HR
- Non-Rated
- Exterior
- Discrepancy
- Corrected

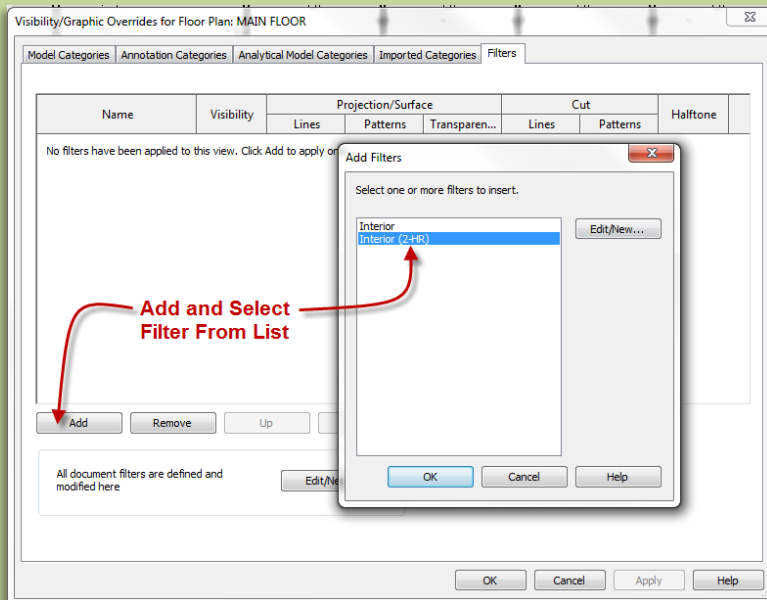
View Template

- Create & Apply

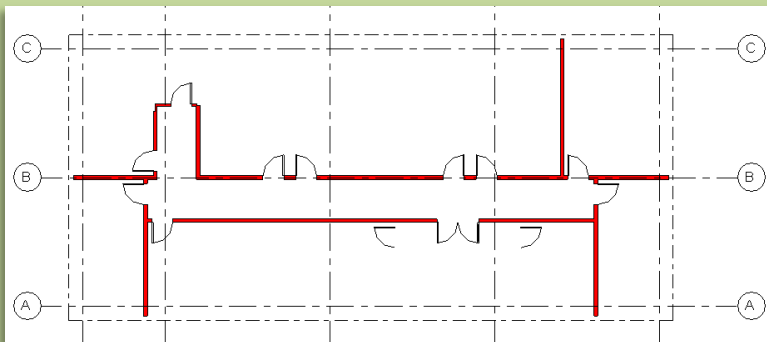
Wrap Up

Revit Introduction

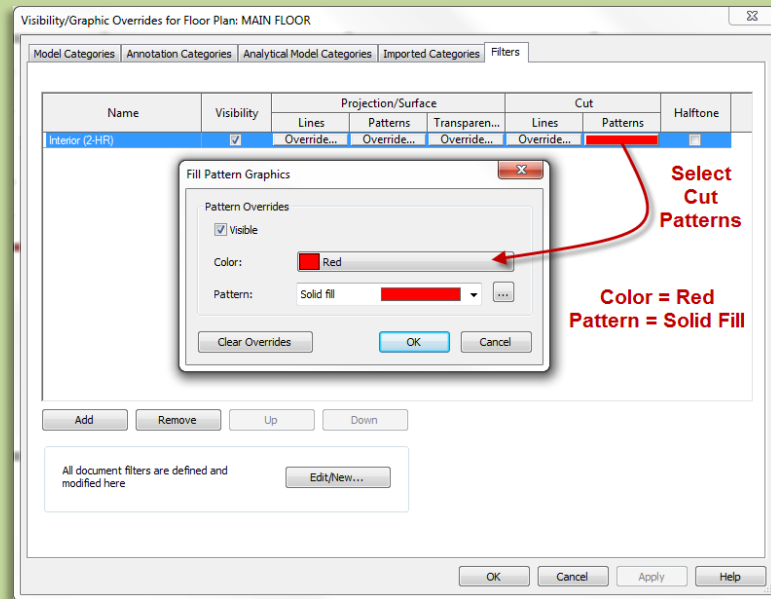
# Add Display Filter : Apply it to View



- Add > Select Filter from the list



- Add the color properties
- Cut > Patterns
  - Color = Red
  - Pattern = Solid Fill



- New Levels**
- Interior Walls
    - Across
    - Lower Half
      - Draw
      - Position
    - Upper Half
      - Draw
      - Position
  - Confirm Dimensions
- Toilet & Chase**
- Draw & Split
  - Plumbing Chase
  - Create/Cleanup
  - Split/Cleanup

- Doors**
- Single-Vision
  - Double-Glass

- Review**
- Add Display Filters**
- 2-HR
  - 1-HR

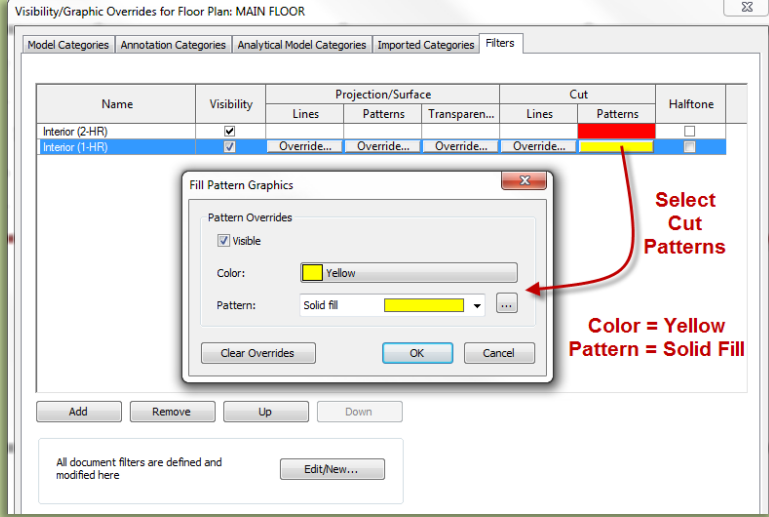
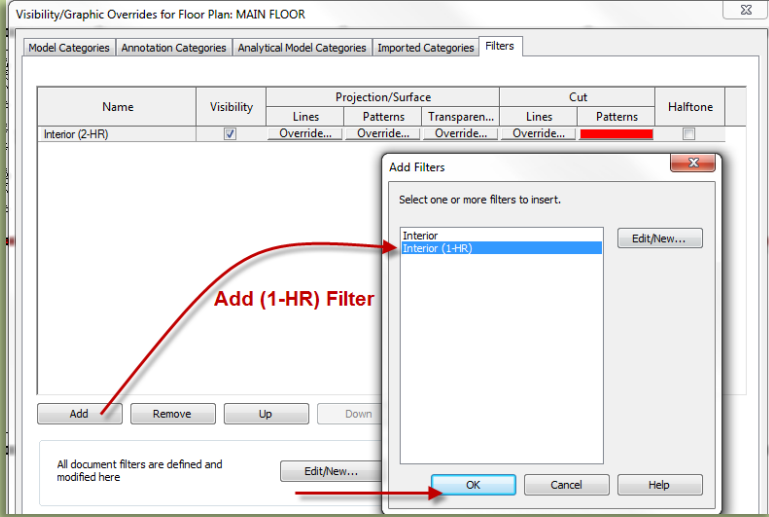
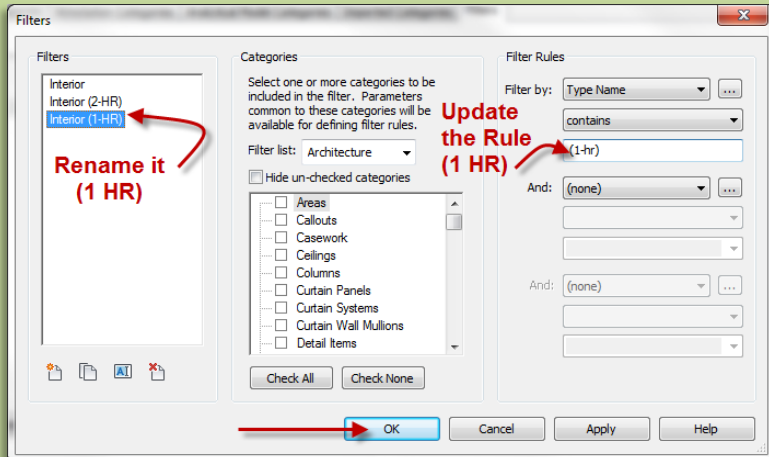
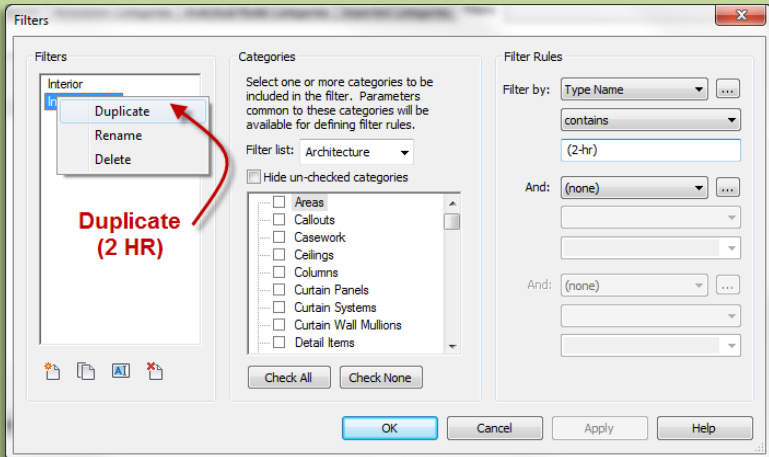
- Non-Rated
- Exterior
- Discrepancy
- Corrected

- View Template**
- Create & Apply

Wrap Up

Revit Introduction

# Add Display Filter : Duplicate & Apply to View (1-HR)



New Levels

Interior Walls

- Across
  - Lower Half
    - Draw
    - Position
  - Upper Half
    - Draw
    - Position
  - Confirm Dimensions
- Toilet & Chase
- Draw & Split
  - Plumbing Chase
  - Create/Cleanup
  - Split/Cleanup

Doors

- Single-Vision
- Double-Glass

Review

Add Display Filters

- 2-HR
- 1-HR
- Non-Rated
- Exterior
- Discrepancy
- Corrected

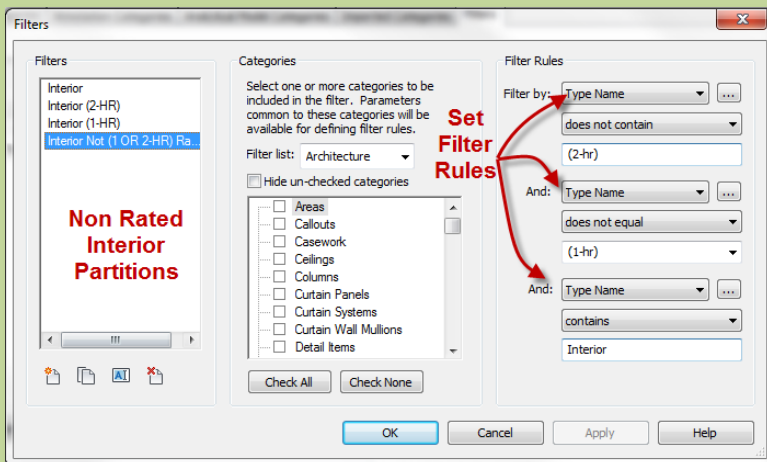
View Template

- Create & Apply

Wrap Up

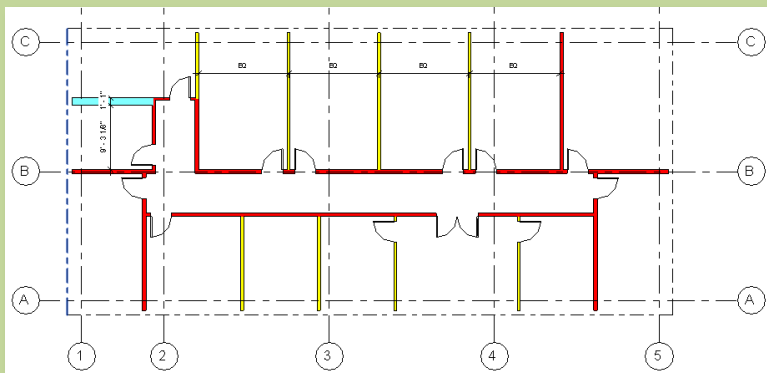
Revit Introduction

# Add Display Filter : Interior Non Rated Partition

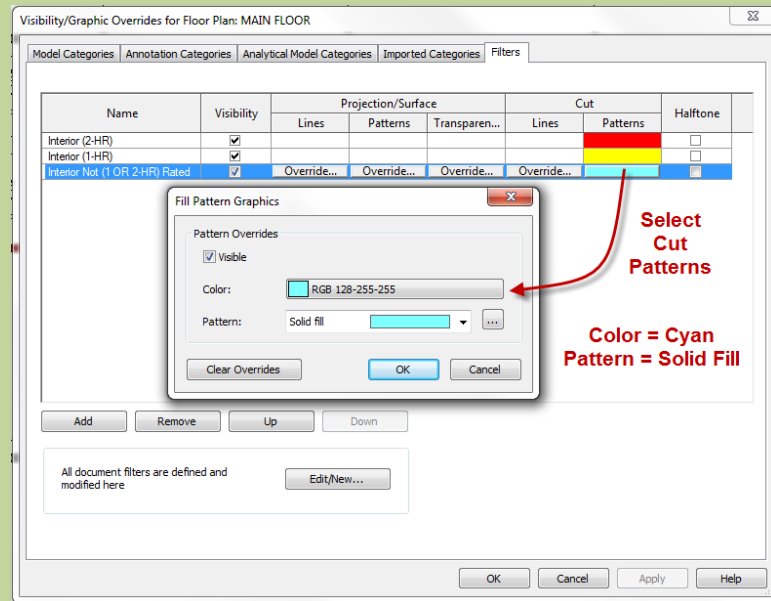


• Cut > Patterns

- Color = Cyan
- Pattern = Solid Fill



- Type Name > Does not Contain > (2-HR)
  - and
- Type Name > does not equal > (1-HR)
  - and
- Type Name > contains > Interior



# Add Display Filter : Exterior Walls

Day 08 FH.05

New Levels

Interior Walls

- Across
- Lower Half
  - Draw
  - Position
- Upper Half
  - Draw
  - Position
- Confirm Dimensions

Toilet & Chase

- Draw & Split
- Plumbing Chase
- Create/Cleanup
- Split/Cleanup

Doors

- Single-Vision
- Double-Glass

Review

Add Display Filters

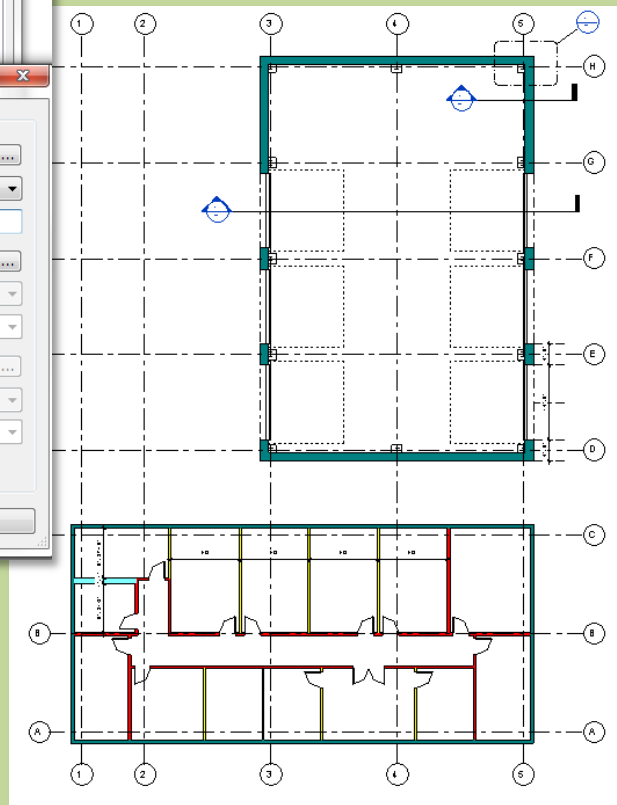
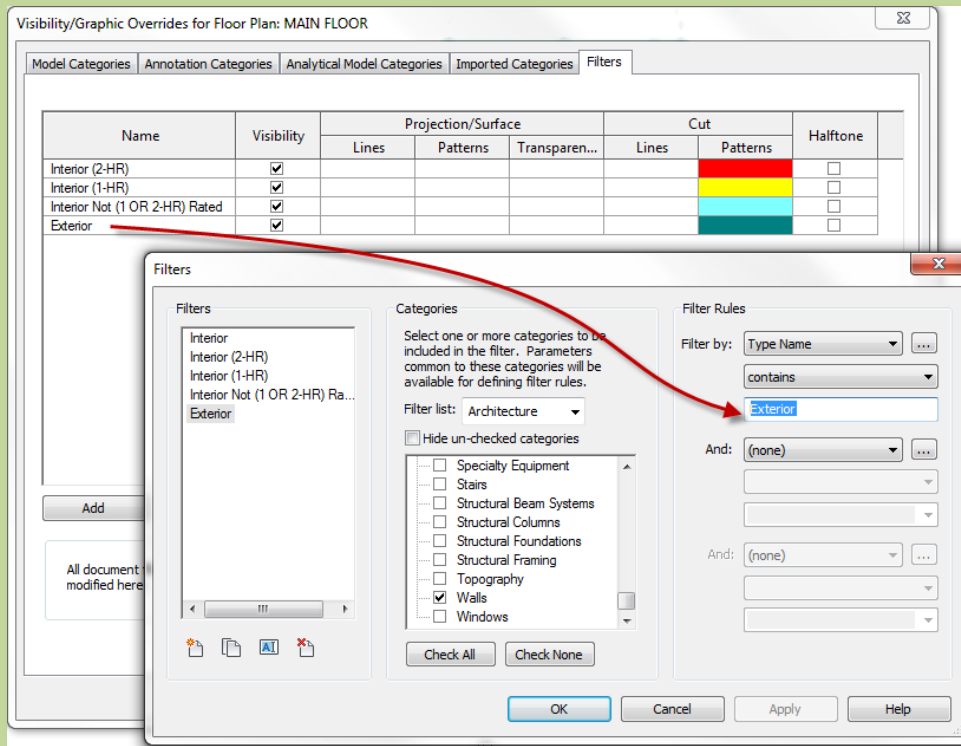
- 2-HR
- 1-HR
- Non-Rated
- Exterior
- Discrepancy
- Corrected

View Template

- Create & Apply

Wrap Up

Revit Introduction



- Exterior Fill
  - Cut > Patterns
    - Color = Teal
    - Pattern = Solid Fill

# All corridors must be (2-HR) Rated : Discrepancy

Day 08 FH.05

New Levels

Interior Walls

- Across
- Lower Half
  - Draw
  - Position
- Upper Half
  - Draw
  - Position
- Confirm Dimensions

Toilet & Chase

- Draw & Split
- Plumbing Chase
- Create/Cleanup
- Split/Cleanup

Doors

- Single-Vision
- Double-Glass

Review

Add Display Filters

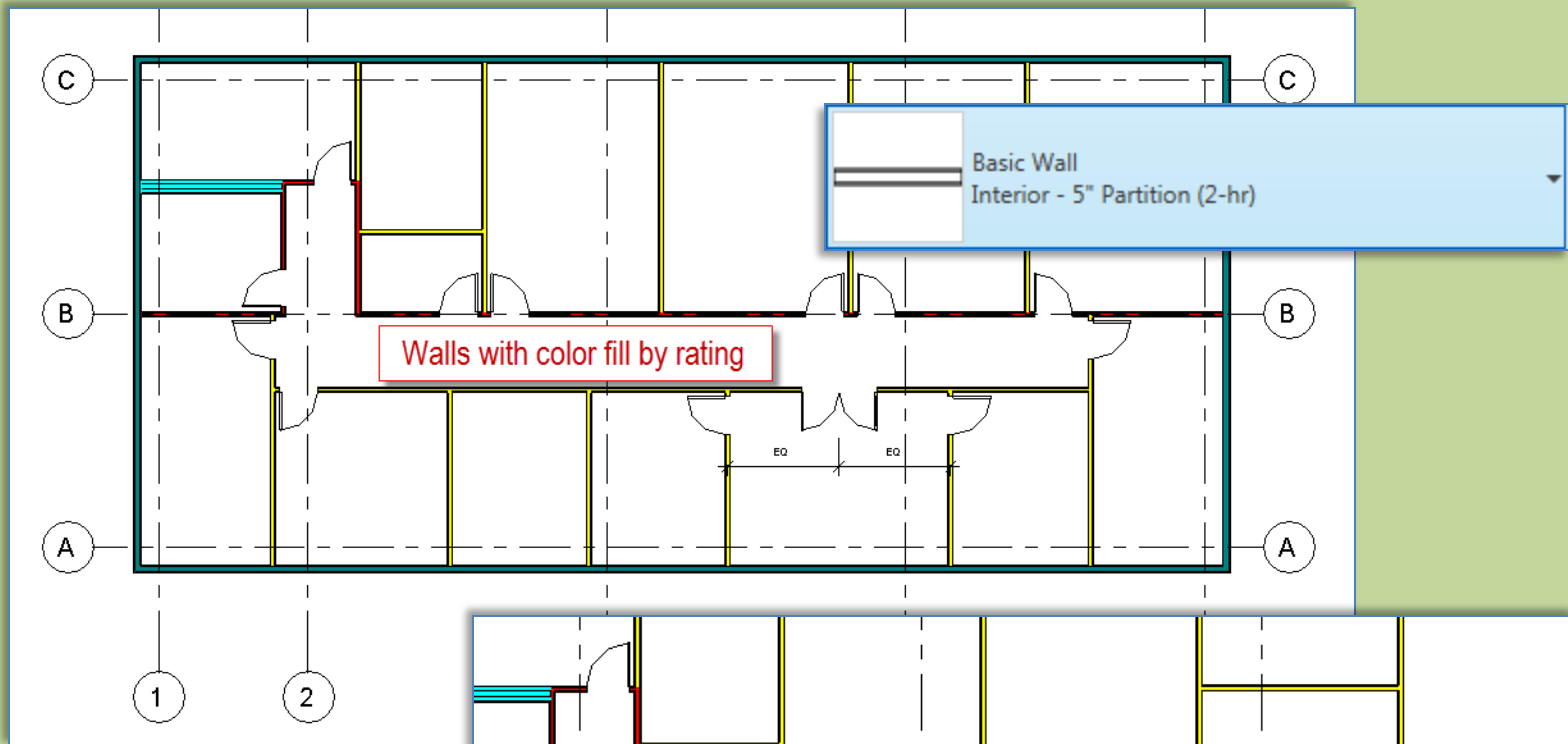
- 2-HR
- 1-HR
- Non-Rated
- Exterior
- Discrepancy
- Corrected

View Template

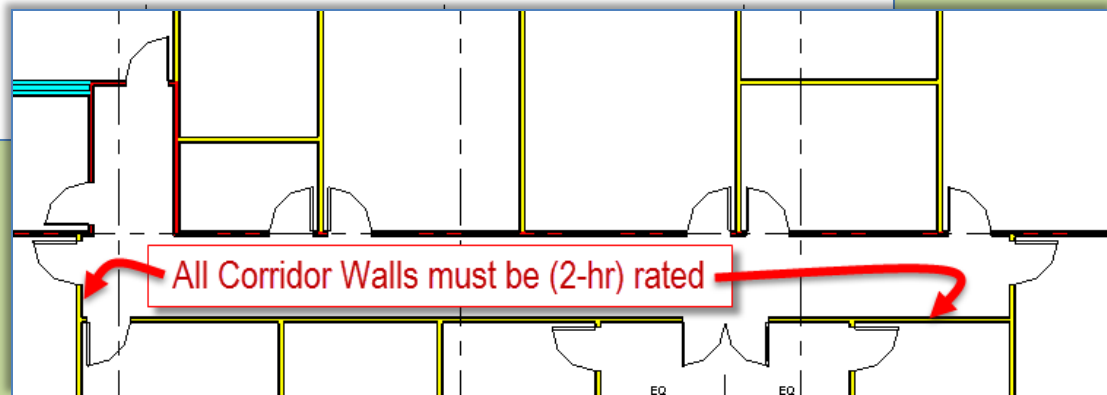
- Create & Apply

Wrap Up

Revit Introduction



- Use color fill to determine if walls are properly rated
- Split & replace corridor walls with (2-HR) Rated partition type
- Interior 5" Partition (2-hr)





- New Levels
- Interior Walls
  - Across
  - Lower Half
    - Draw
    - Position
  - Upper Half
    - Draw
    - Position
- Confirm Dimensions
- Toilet & Chase
  - Draw & Split
  - Plumbing Chase
  - Create/Cleanup
  - Split/Cleanup
- Doors
  - Single-Vision
  - Double-Glass
- Review

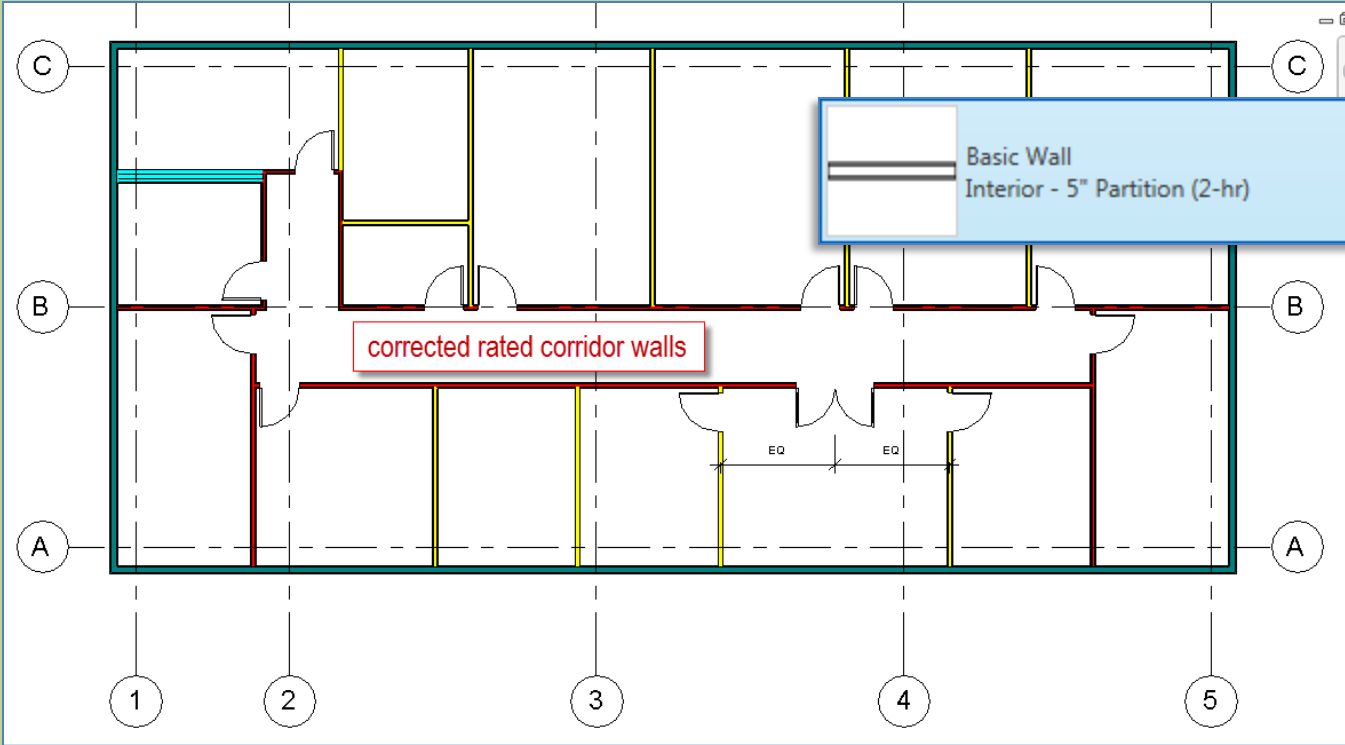
- Add Display Filters
  - 2-HR
  - 1-HR
  - Non-Rated
  - Exterior
  - Discrepancy
  - Corrected

- View Template
  - Create & Apply

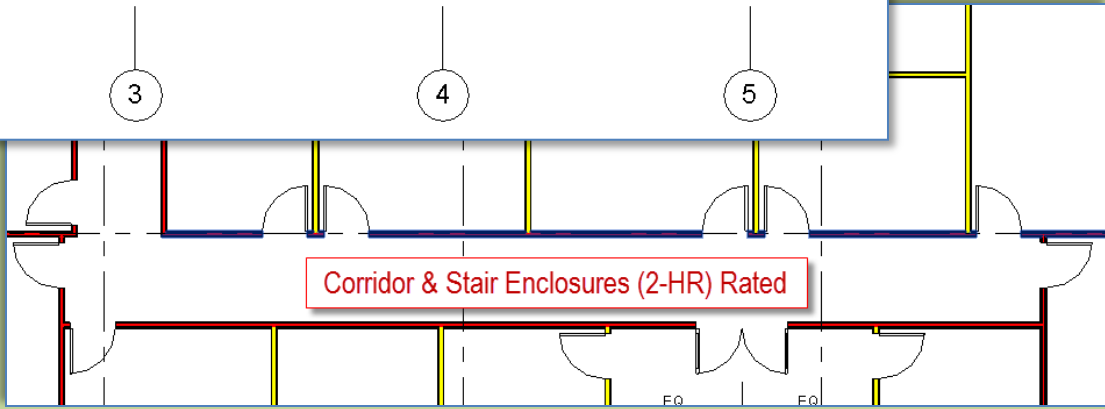
Wrap Up

Revit Introduction

# All corridors must be (2-HR) Rated : Corrected



- Use color fill to determine if walls are properly rated
- Split & replace corridor walls with (2-HR) Rated partition type
- Interior 5" Partition (2-hr)



- New Levels**
- Interior Walls
    - Across
    - Lower Half
      - Draw
      - Position
    - Upper Half
      - Draw
      - Position
  - Confirm Dimensions
- Toilet & Chase**
- Draw & Split
  - Plumbing Chase
  - Create/Cleanup
  - Split/Cleanup

- Doors**
- Single-Vision
  - Double-Glass

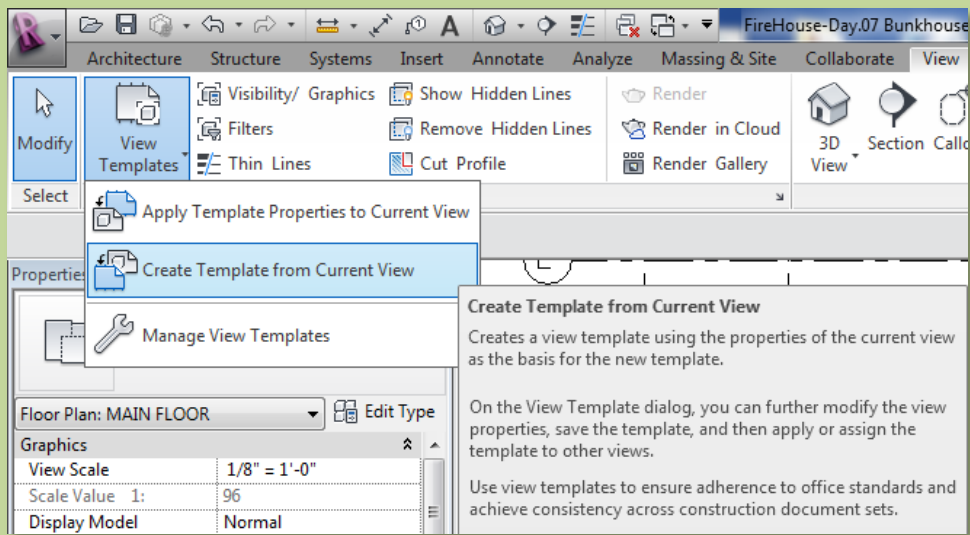
- Review**
- Add Display Filters**
- 2-HR
  - 1-HR
  - Non-Rated
  - Exterior
  - Discrepancy
  - Corrected

- View Template**
- Create & Apply

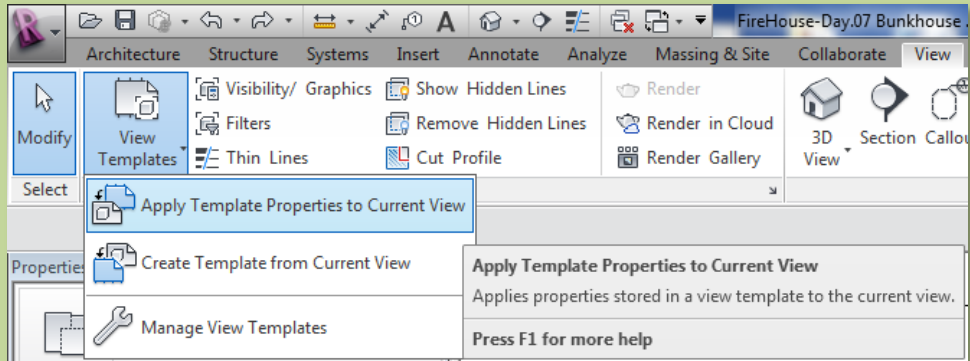
Wrap Up

Revit Introduction

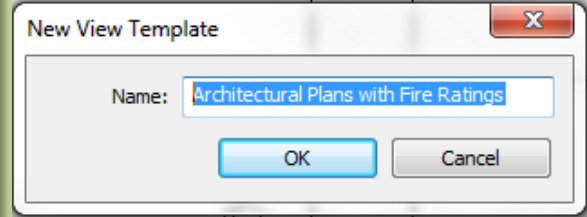
# Create & Use a View Template



- Select another view
- Apply Template to Current View



- Create Template
- Name it  
"Architectural Plans with Fire Ratings"



- Select View name from the list

