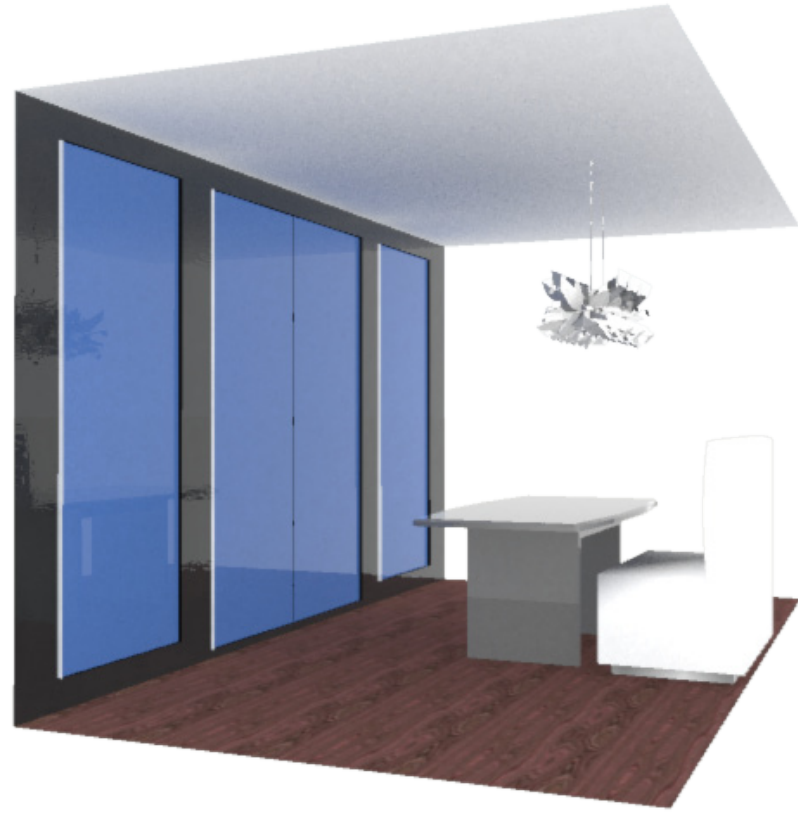
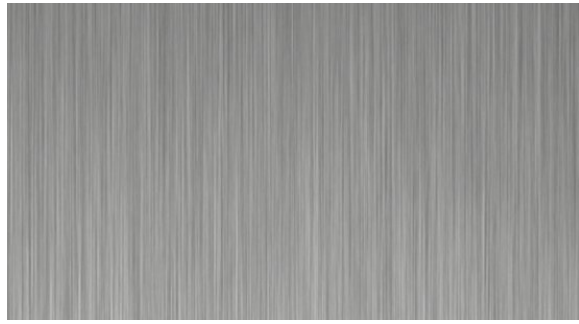


# Materials Study 1

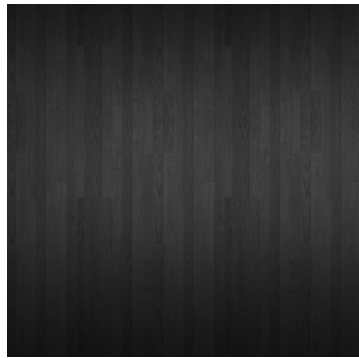


Walls:

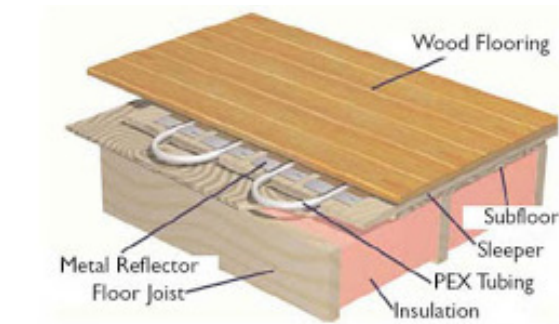


Metal

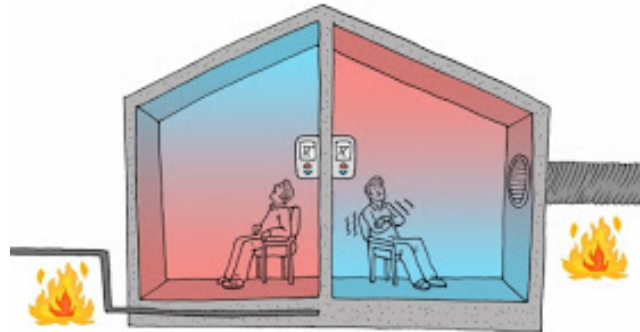
Floor:



Dark Hard wood Floor



Floor heating under Hard wood



Radiant heating on the left vs. force-air heating on the right.



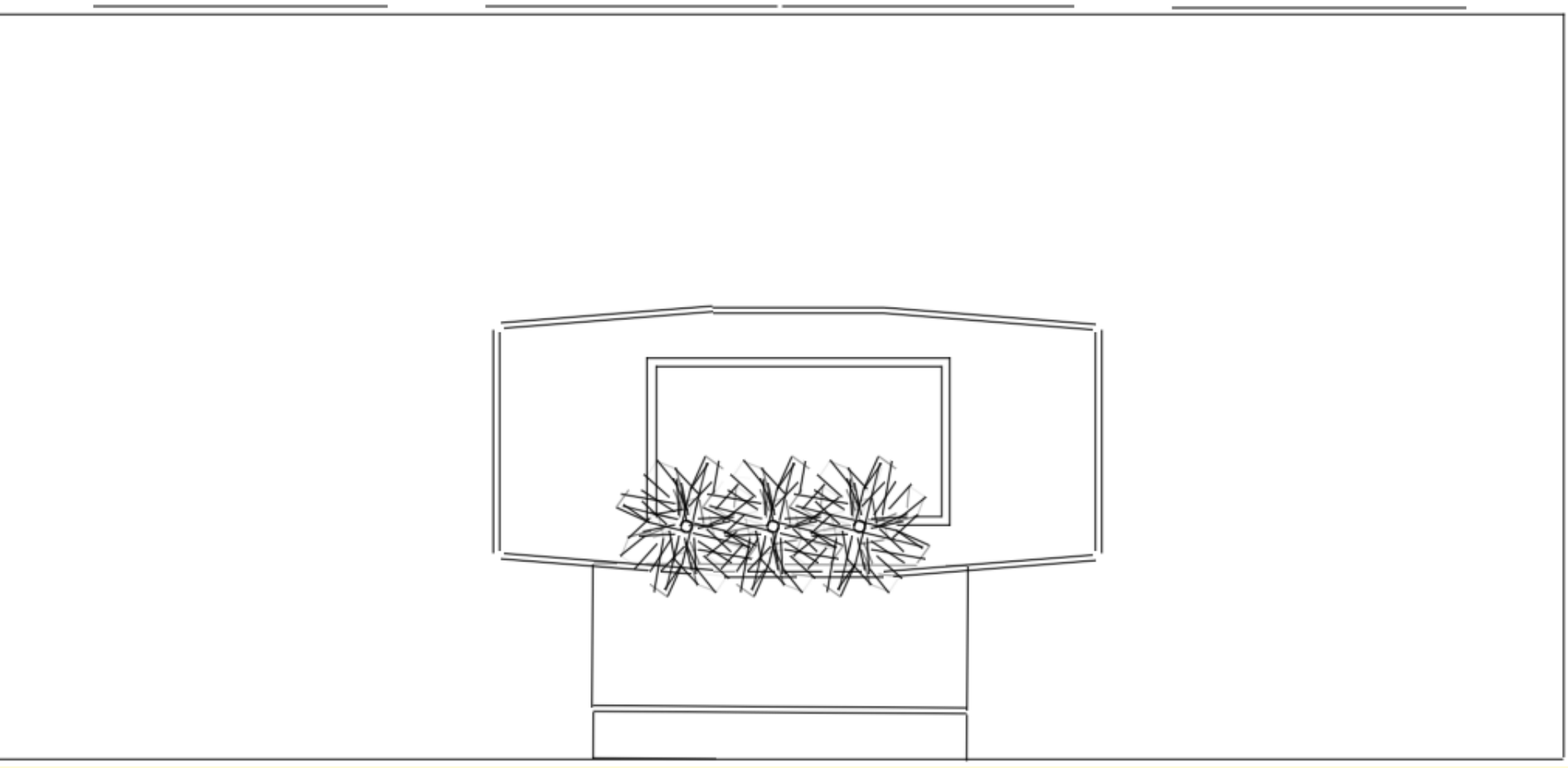
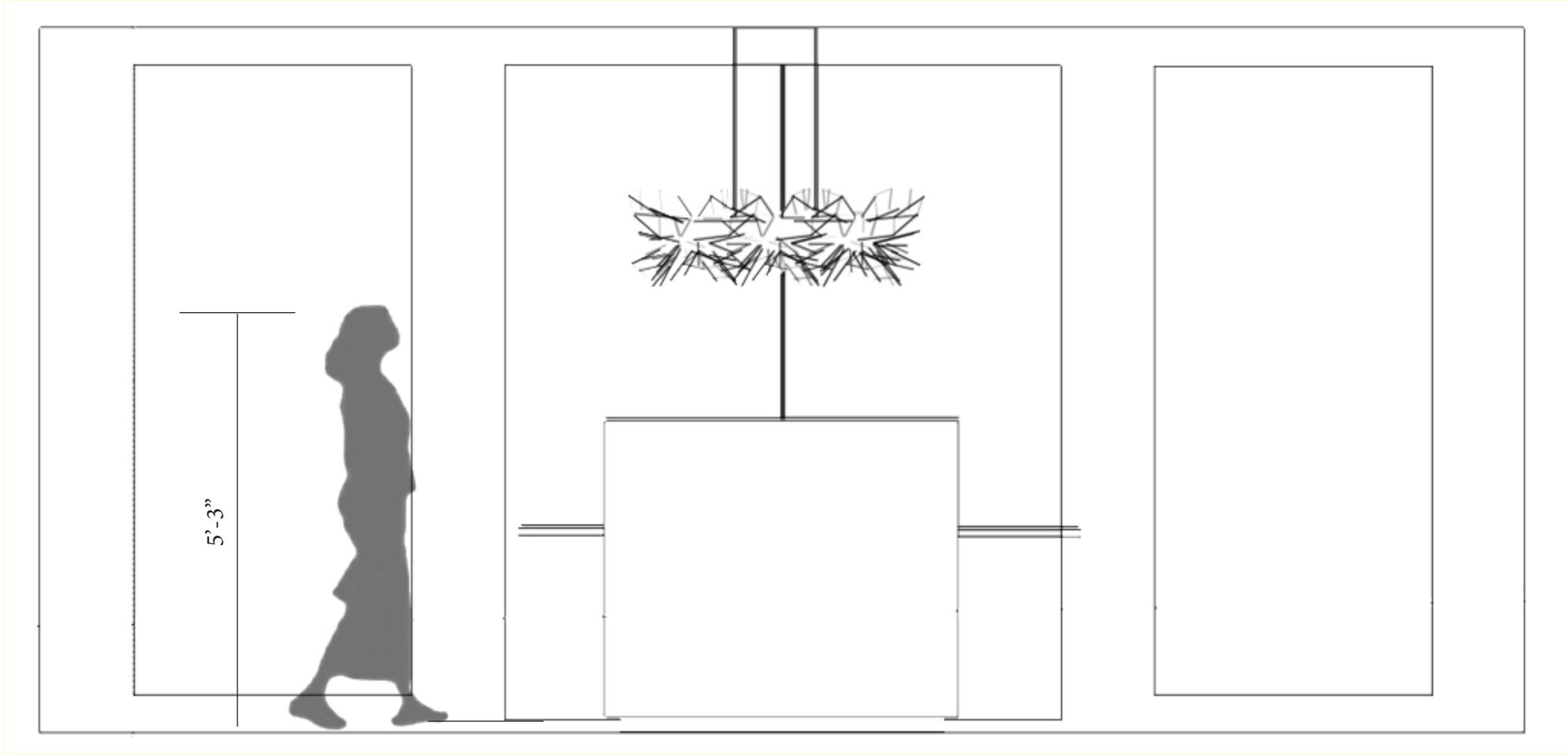
Black Metal French windows and doors



Insulated Windows

Windows:  
Doors:

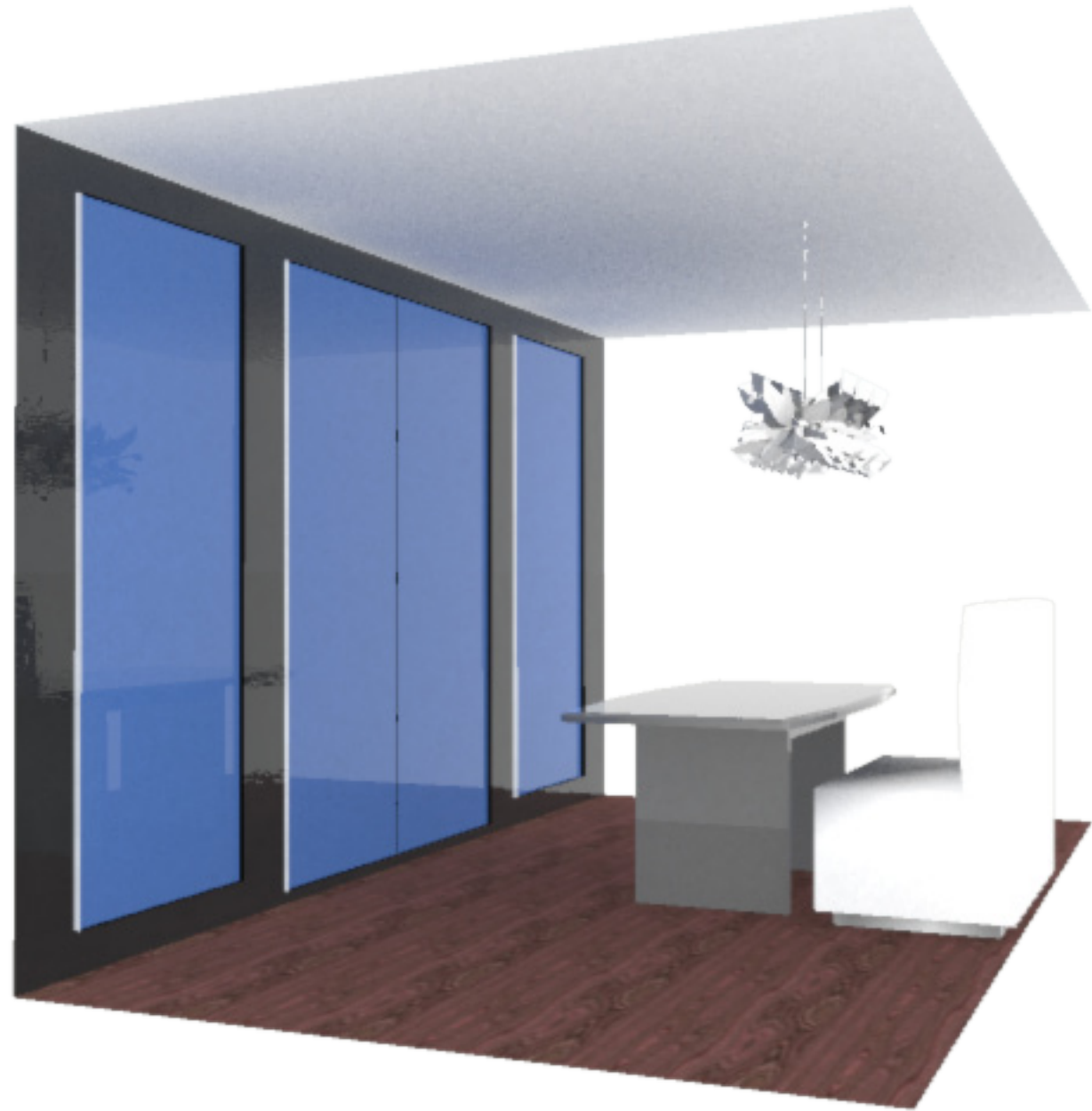
# Ergonomics



Front View

Top View

3D Models



Gracy Dubon

Arch3510

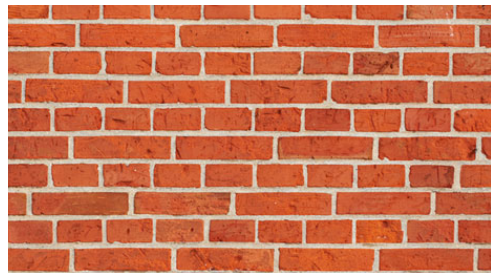
Professor King



# Materials Study 2



Walls:



Brick

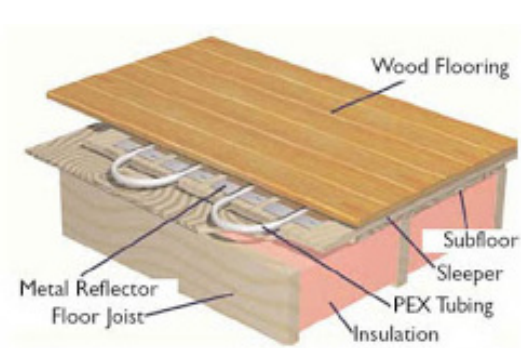


Gypsum Board

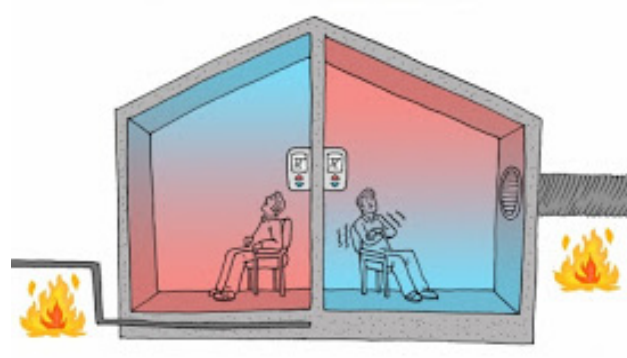
Floor:



Red Birch Hard wood



Floor heating under Hard wood



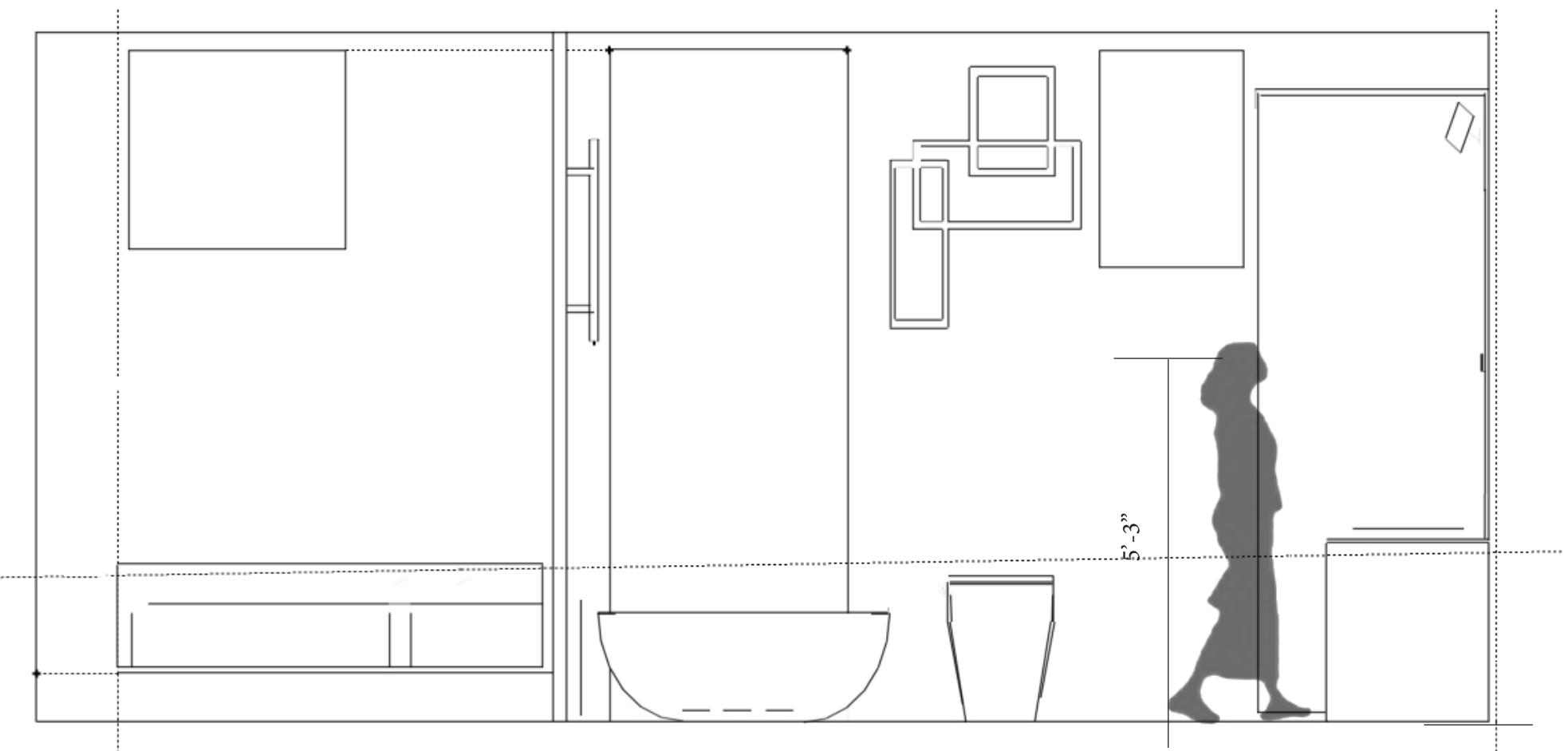
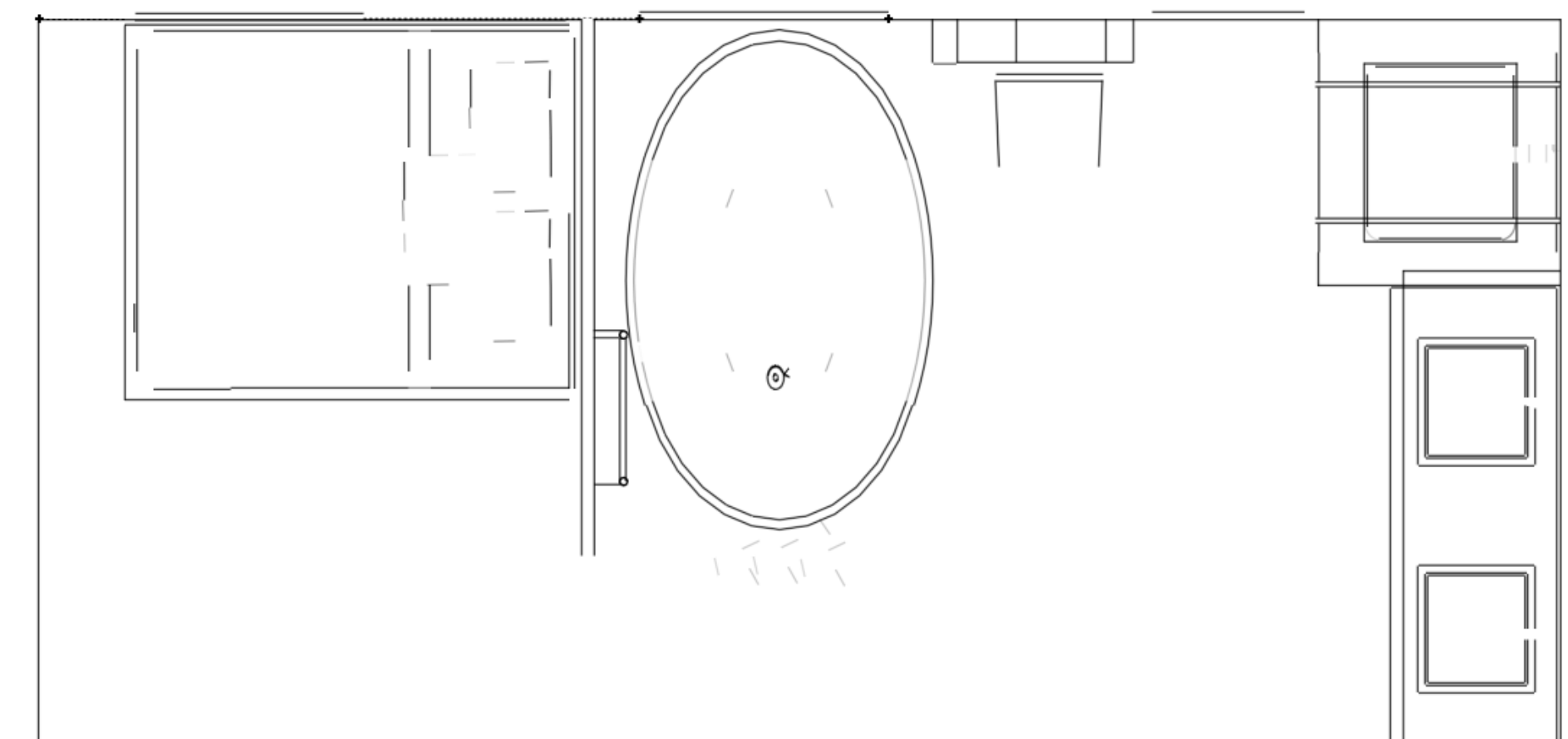
Radiant heating on the left vs. force-air heating on the right.



Insulated Windows

Windows:

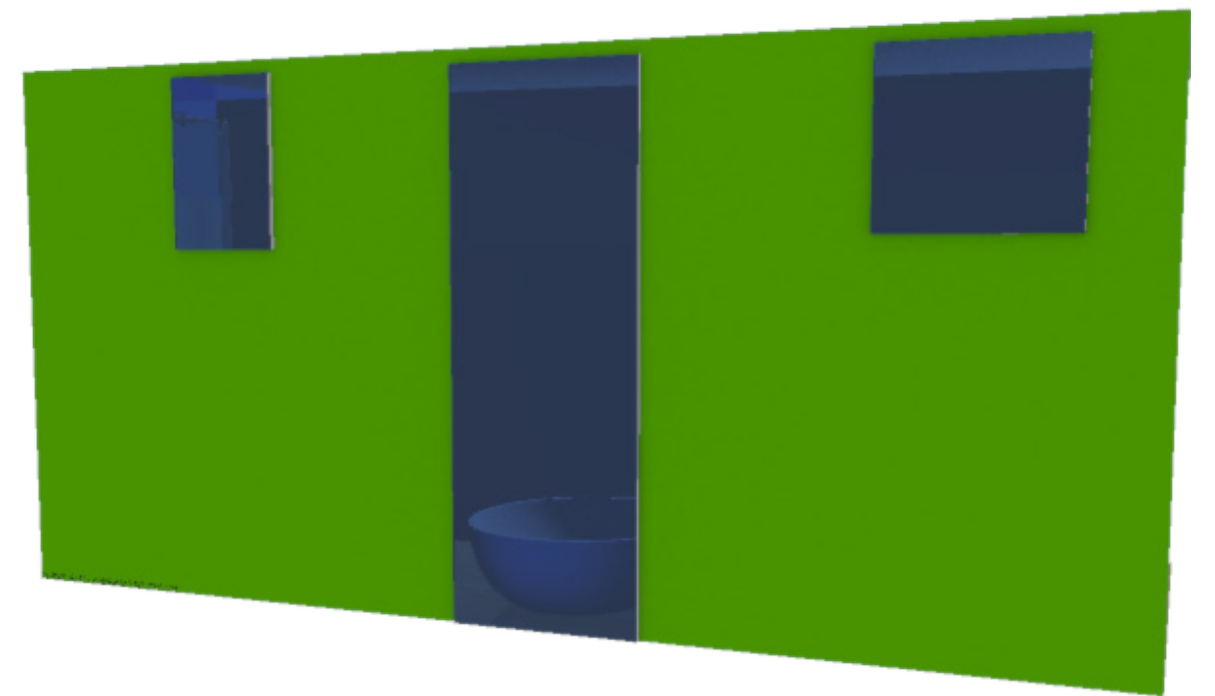
# Ergonomics



Top View

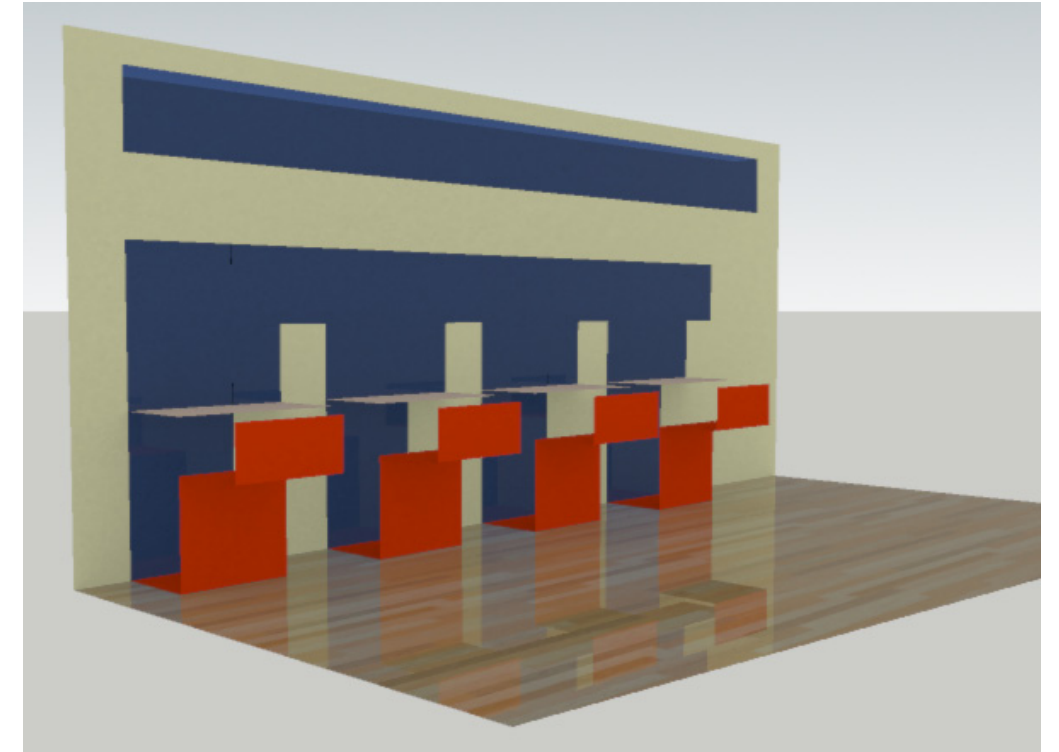
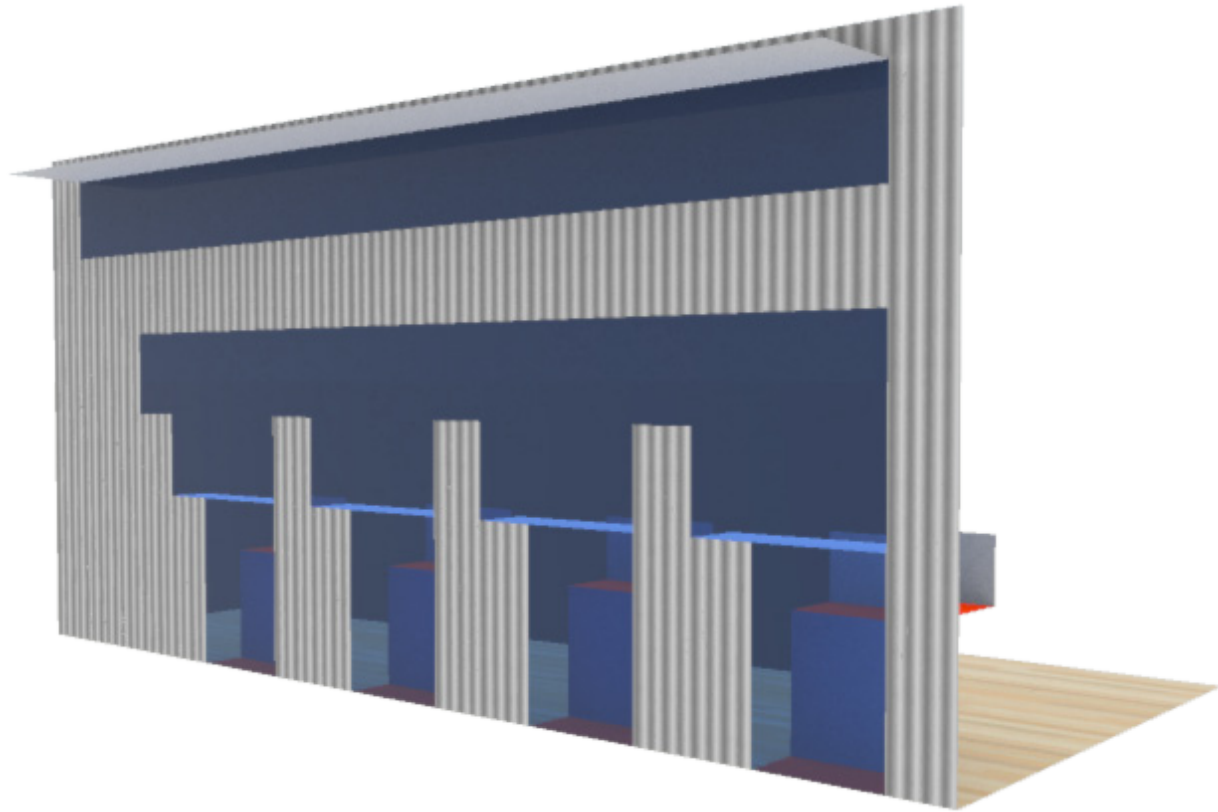
Front View

3D Models





# Materials Study 3



Walls:



Gypsum Board



Steel - Exterior

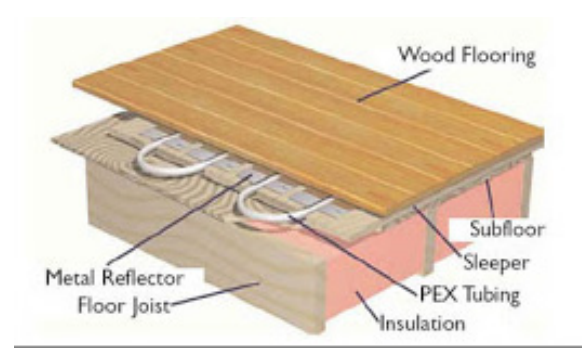


Glossy Plastic

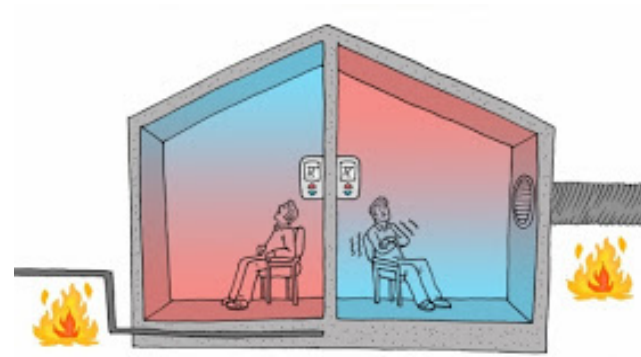
Floor:



Red Birch Hard wood



Floor heating under Hard wood



Radiant heating on the left vs. force-air heating on the right.

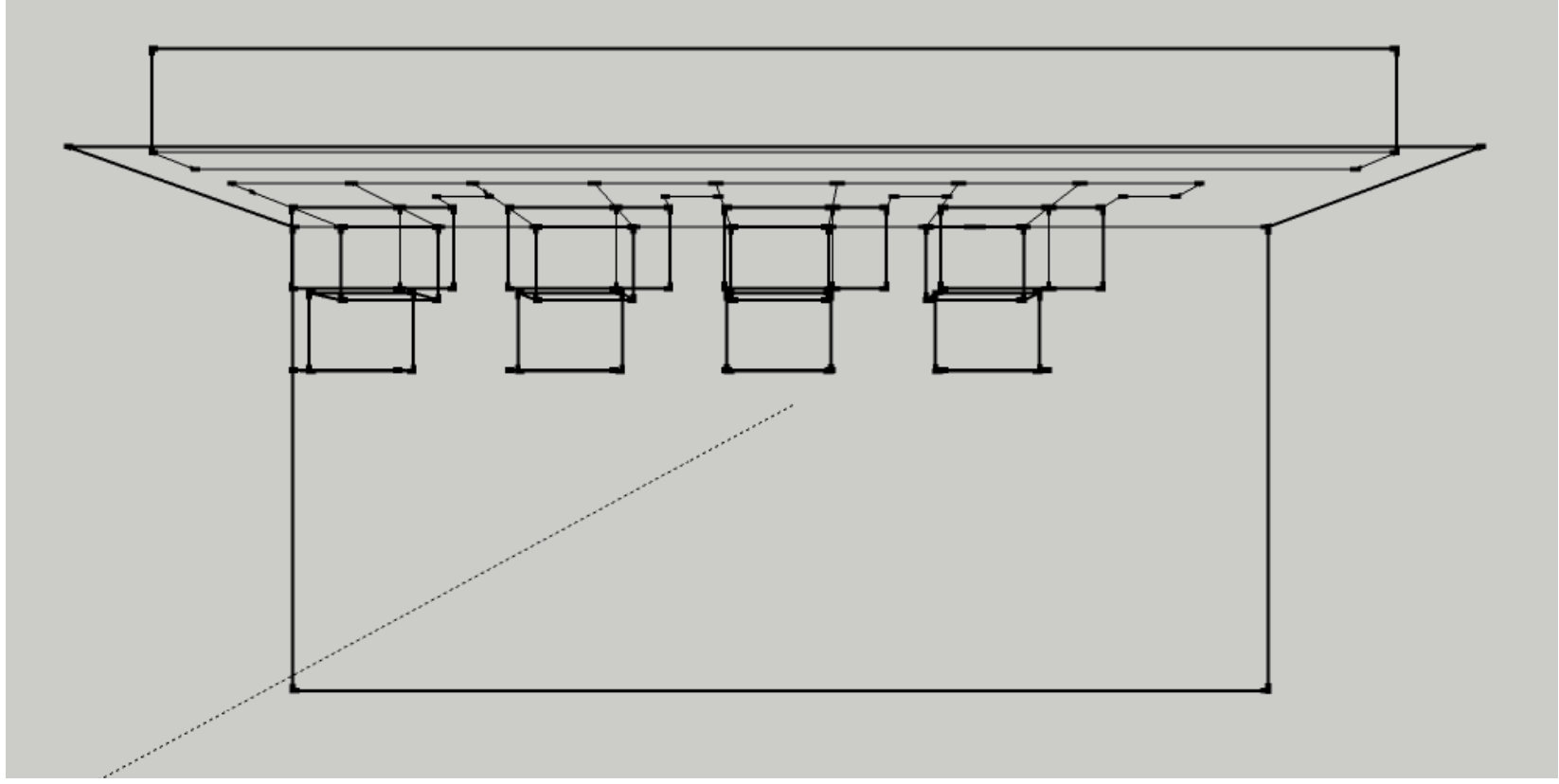


Insulated Windows

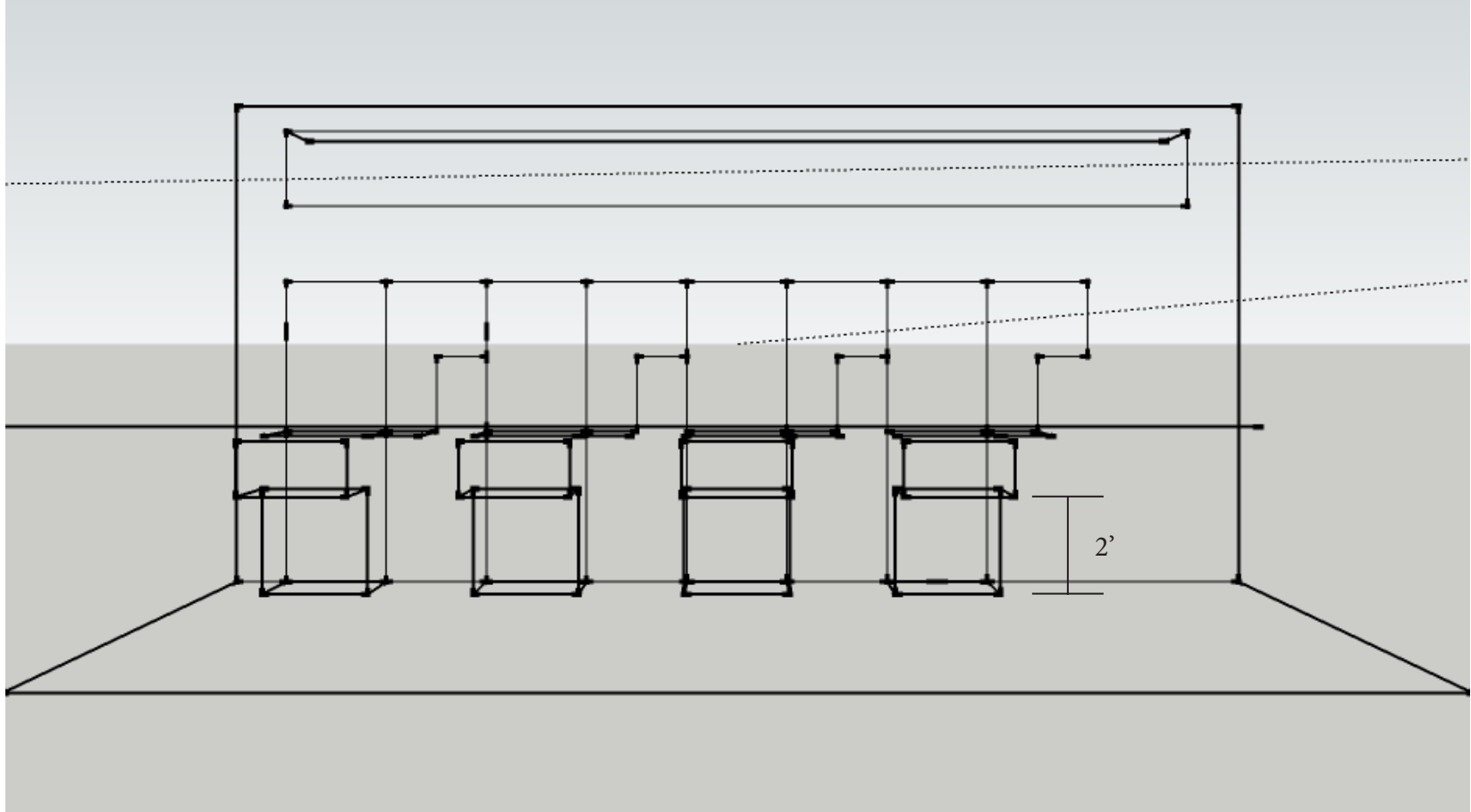
Chairs:

Windows:

# Ergonomics



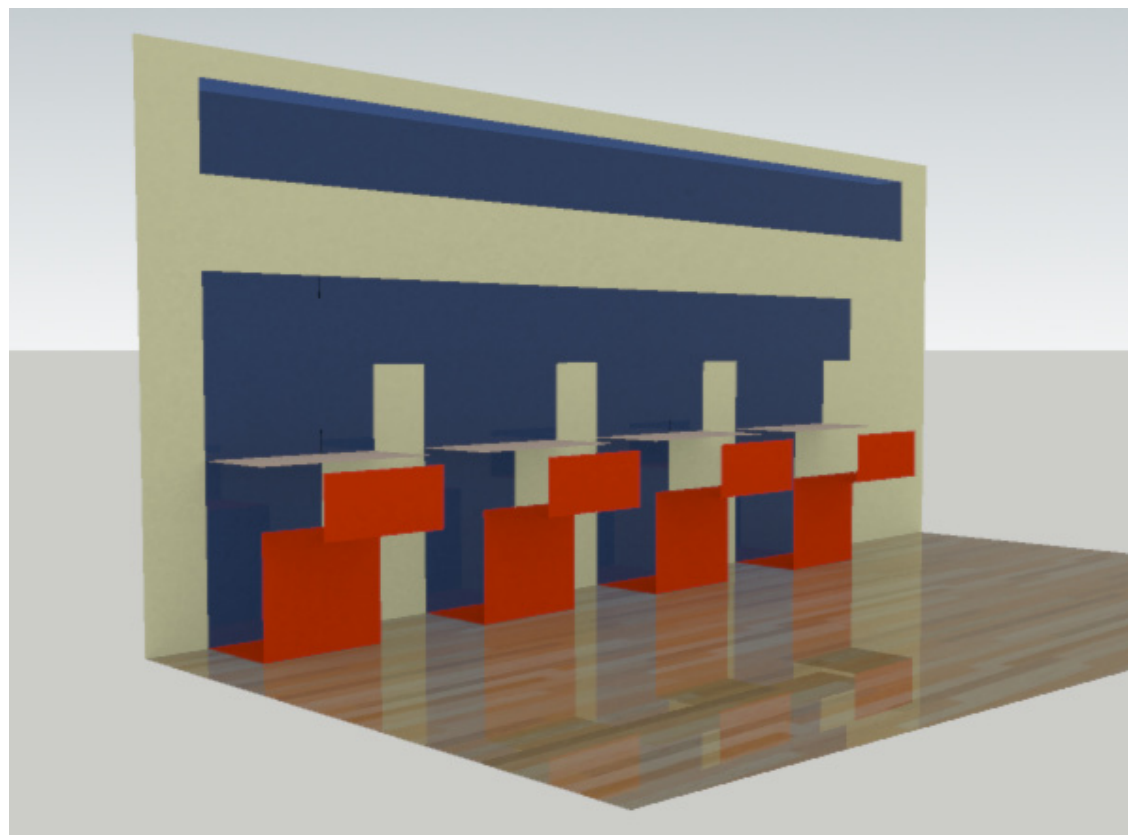
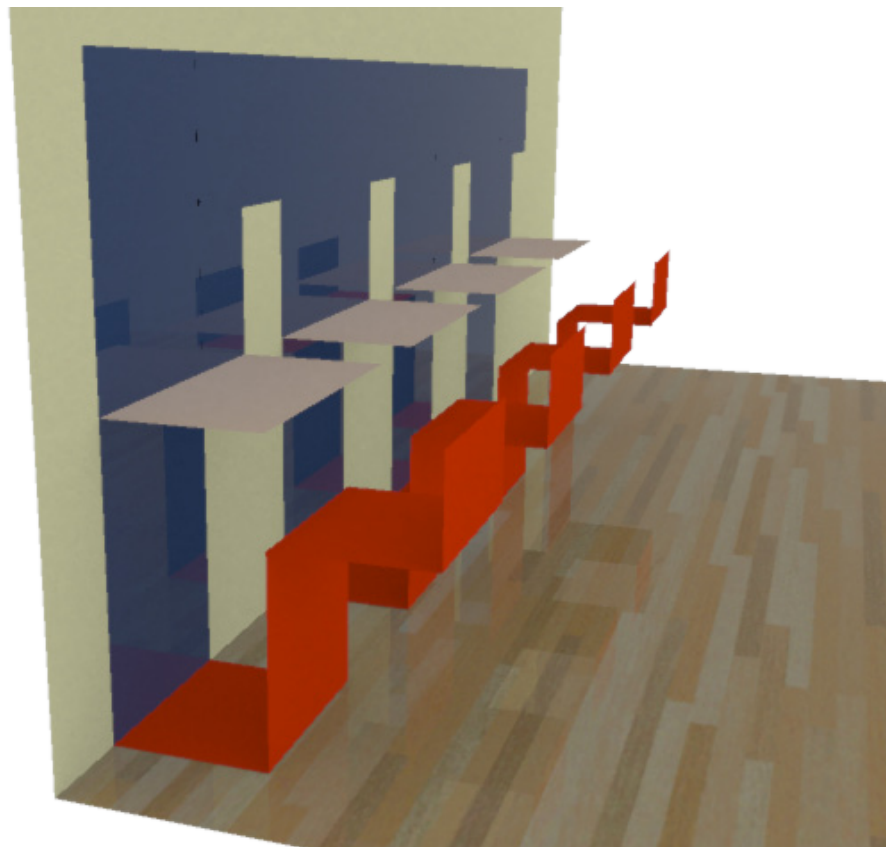
Top View



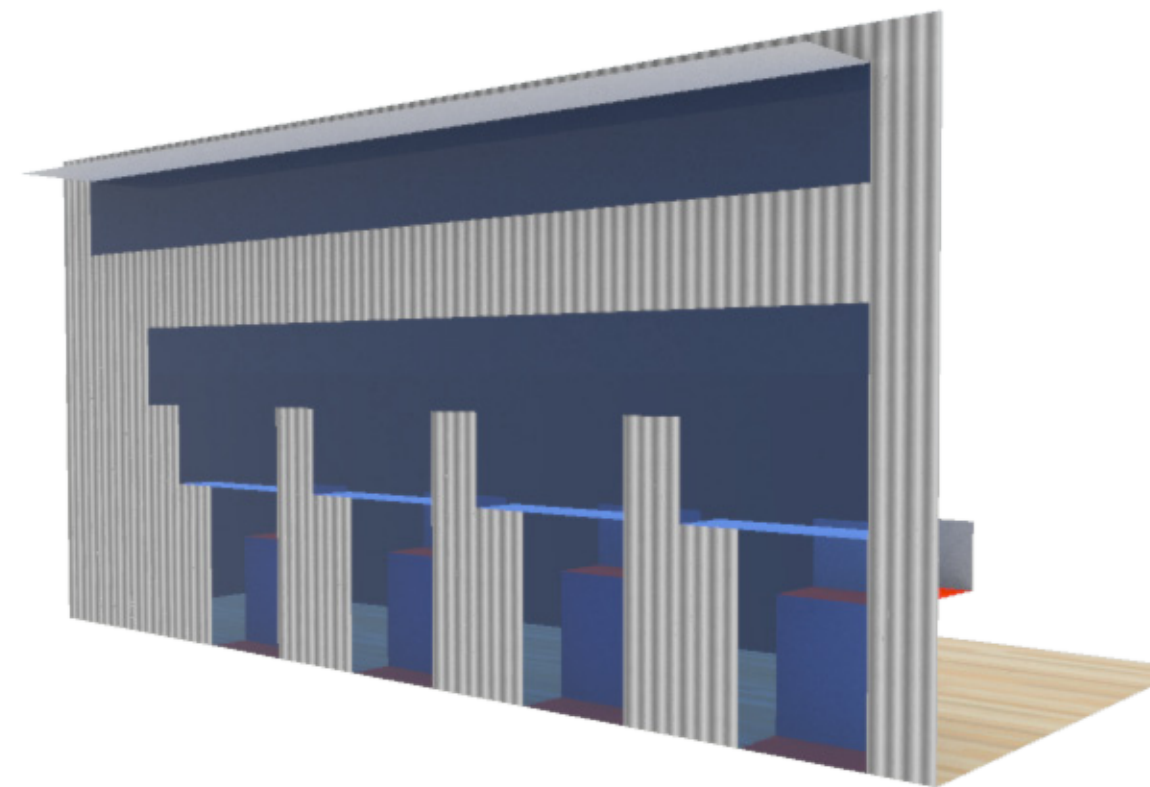
Front View



3D Models



Gracy Dubon



Arch3510

Professor King