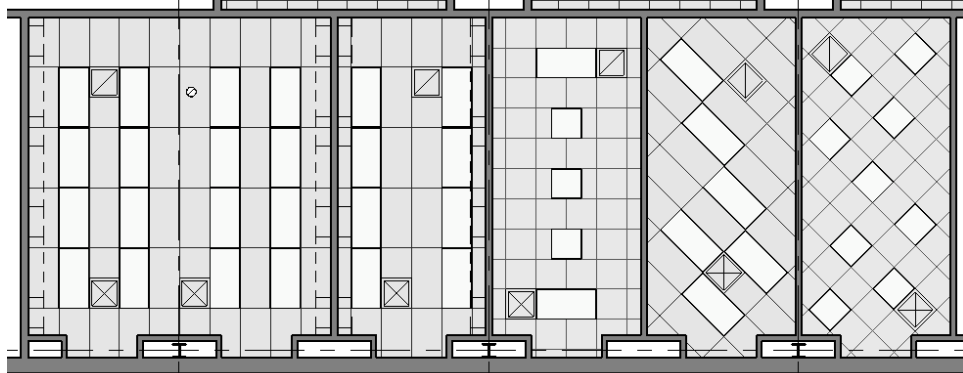


Spring 2011

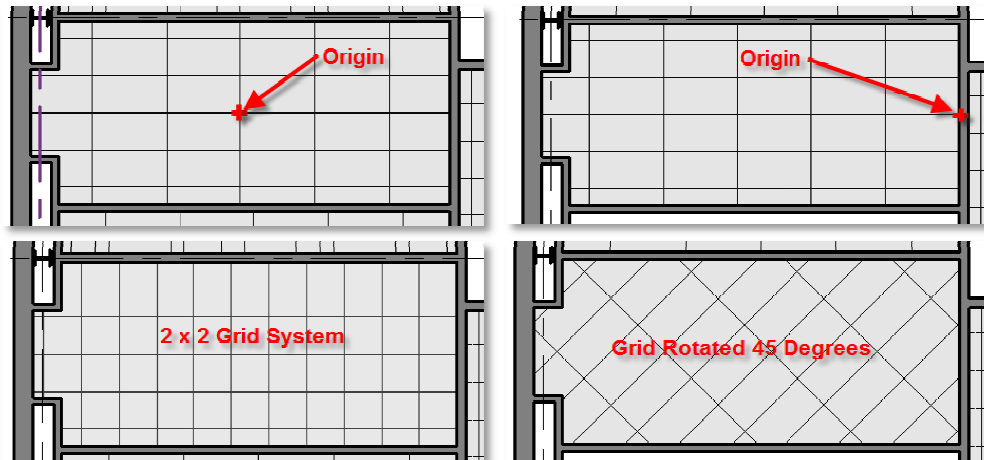
Phase 1 Stage 11: WORKING WITH REFLECTED CEILING PLANS

(WEEK 6A)

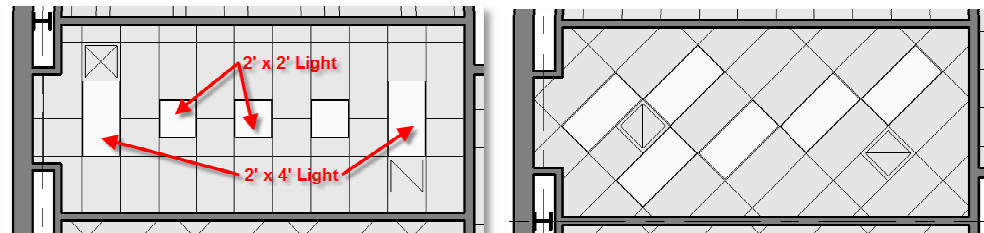
**Hung Ceilings:** Hung Ceiling are include grids, lights, supply & return ducts, sprinkler heads etc.



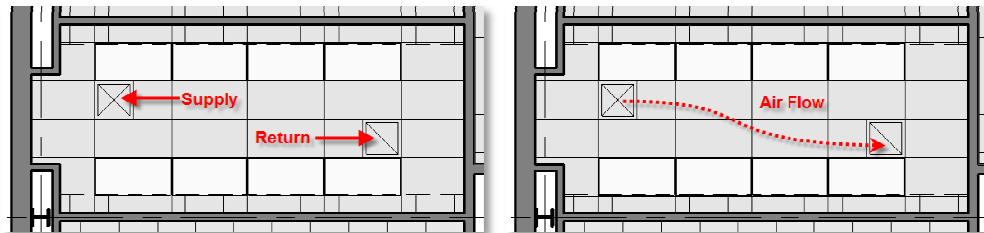
**Ceilings Grid:** Consider Grid Size (2 x 4, 2 x 2), Origin and Rotation



**Lights:** Lights work with the grid

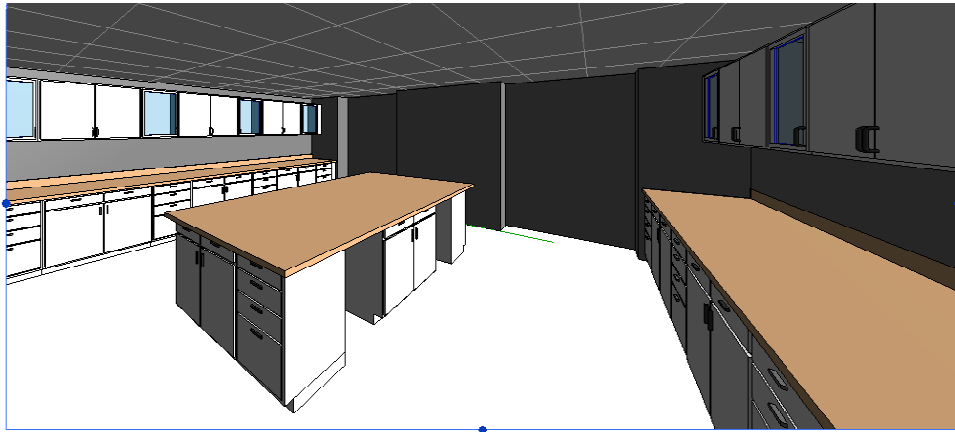


**Supply/Return:** Air flows from the supply duct towards the return duct

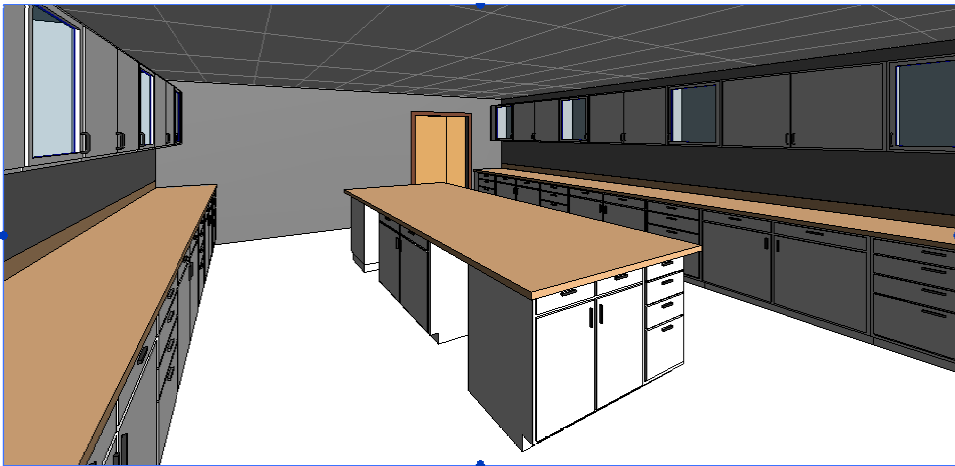


Spring 2011

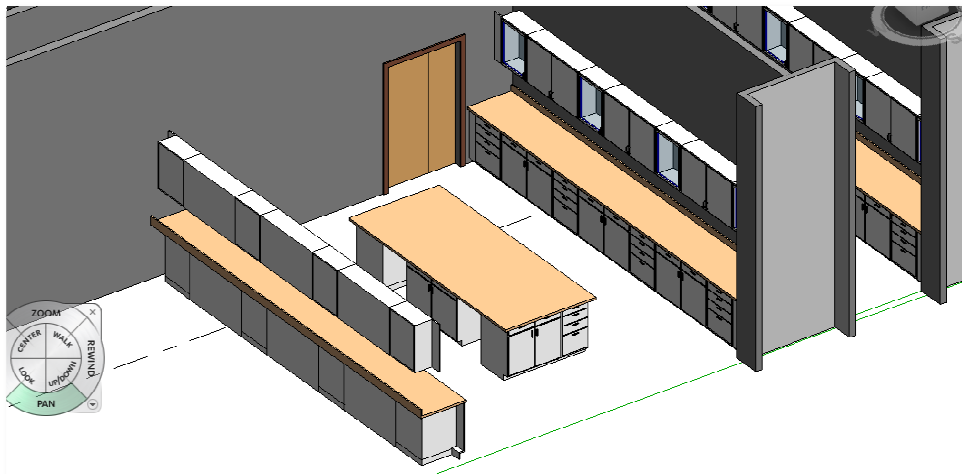
3d Perspective: View of Double Lab looking toward exterior Window Wall



3d Perspective: View of Double Lab looking toward door

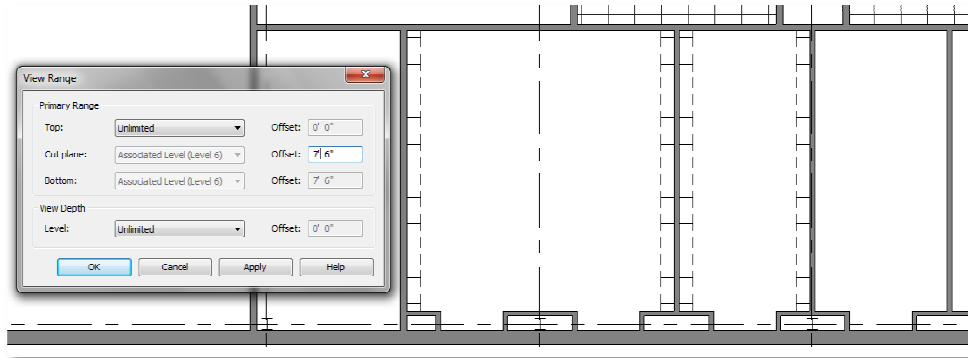


Isometric View Isometric view of Double Lab from building exterior

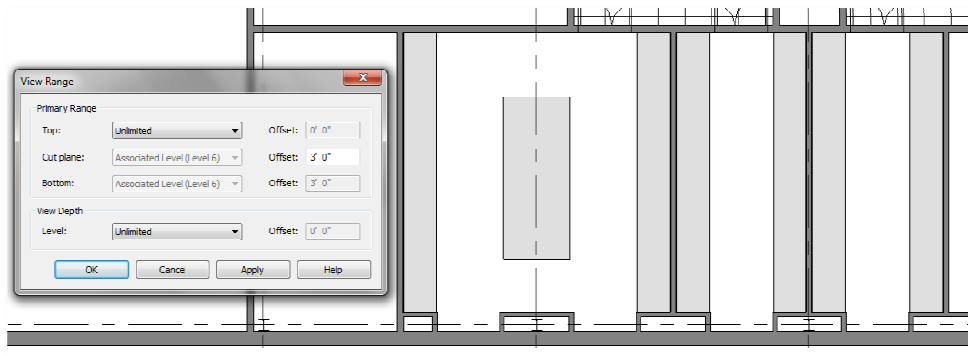


Spring 2011

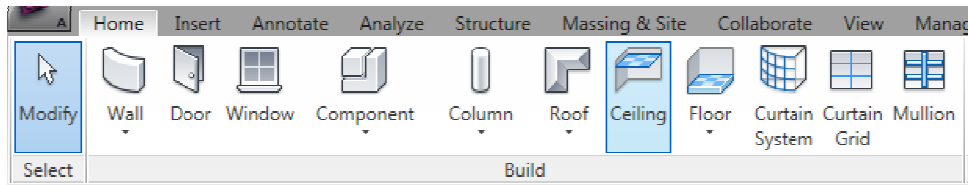
**Default Depth:** The default view depth of 7'-6" does not allow us to see the lab counters.



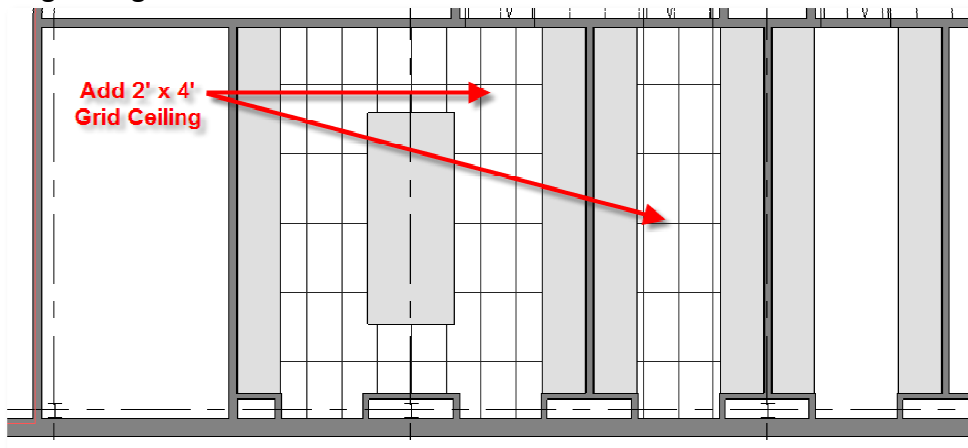
**Adjust View Depth:** Set the view offset to 3'-0" so the lab counters are visible. When done set the offset back to the default of 7'-6"



**Place Ceiling:** Home > Ceiling > 2 x 4 ACT system

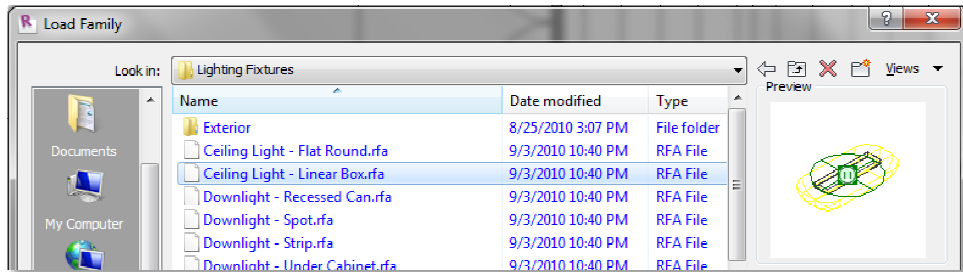


Align the grid on the center of the rooms

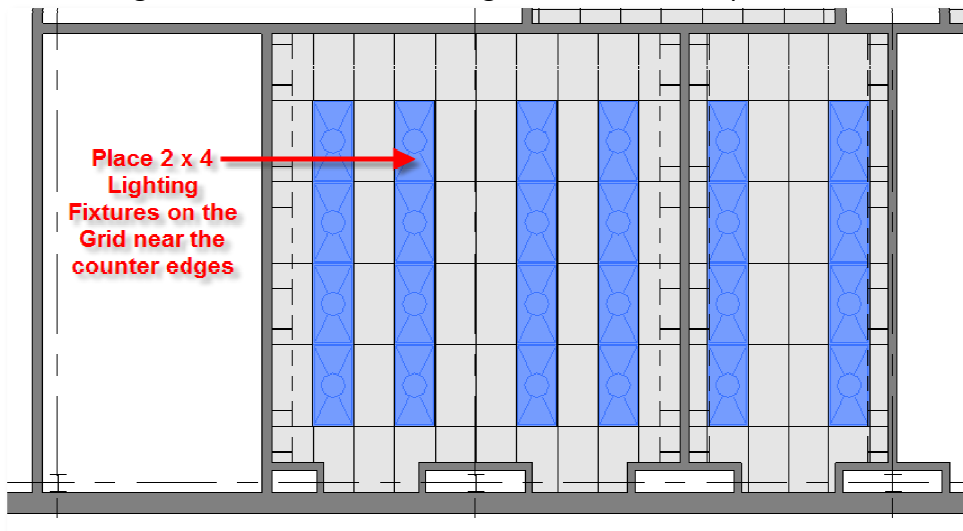


Spring 2011

**Load Family:** Select **Lighting Fixtures > Ceiling Light - Linear Box**



**Add Lights:** Add the light fixtures to the labs. Align and Rotate into position

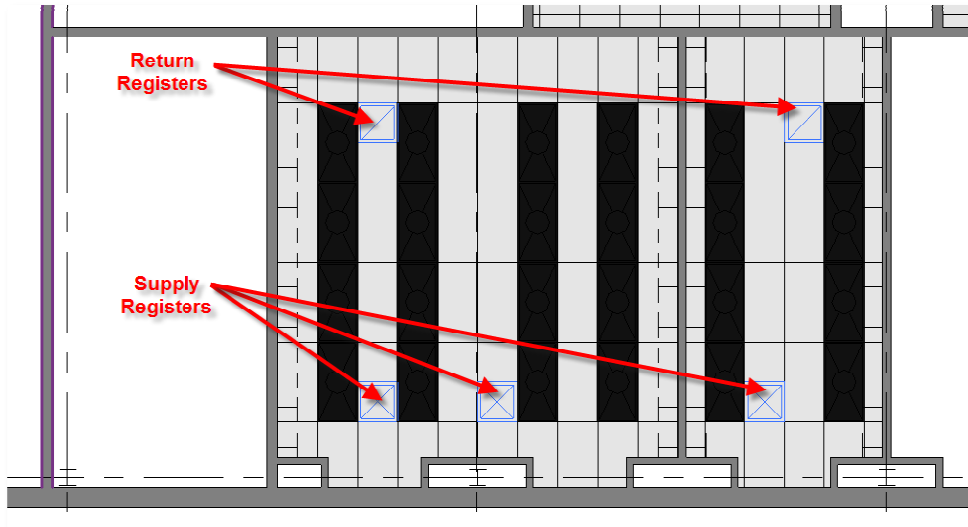


**Perspective View:** View showing the addition of the 2' x 4' boxed lights

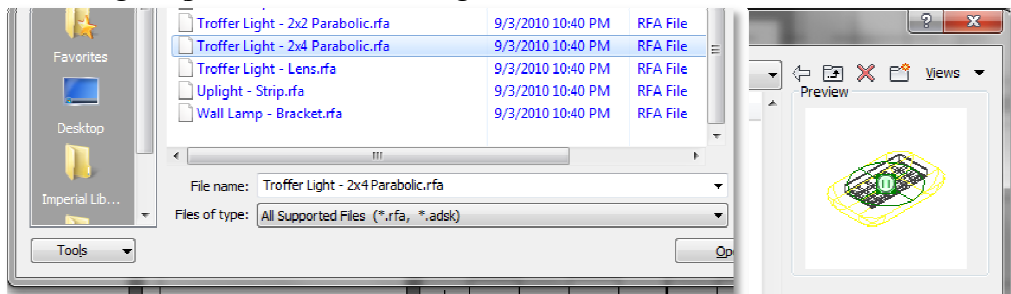


Spring 2011

**Add Mechanical:** Load the Mechanical families and add Supply and Return Registers in each Lab.



**Load Family:** Select Lighting Fixtures > Troffer Light - 2x4 Parabolic



**Updated View:** Perspective view showing the Parabolic Troffer Lights & Mechanical Registers

