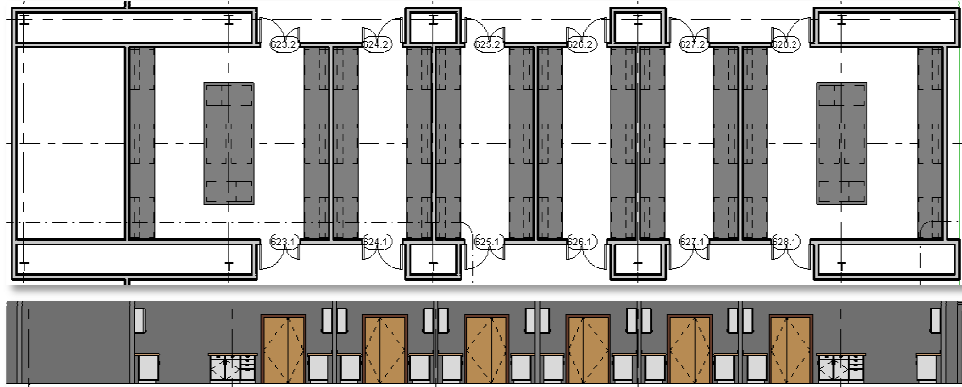


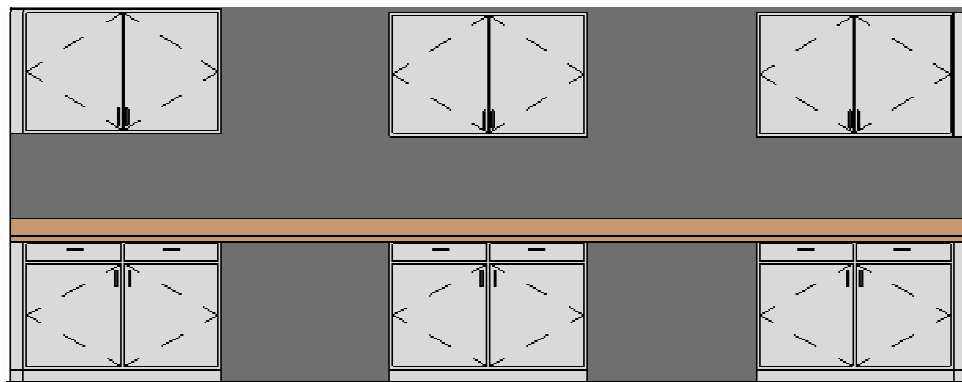
Spring 2011

Phase 1 Stage 10: ADDING LABORATORY CASEWORK - MIDDLE LABS AND CLASSROOMS (WEEK 5B)

Center Lab Bays: Islands are 22'-2" x 5'. Benches at walls are the length of the room



Casework Elevation: Walls have 3 @48" base and wall cabinets with 3" filler panels at ends



End Classrooms: Three (3) end classrooms with flexible seating arrangements

