

Spring 2011

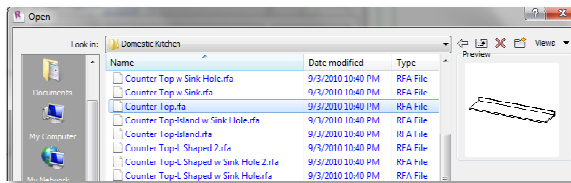
Phase 1 Stage 9: **ADDING LABORATORY CASEWORK**

(WEEK 5A)

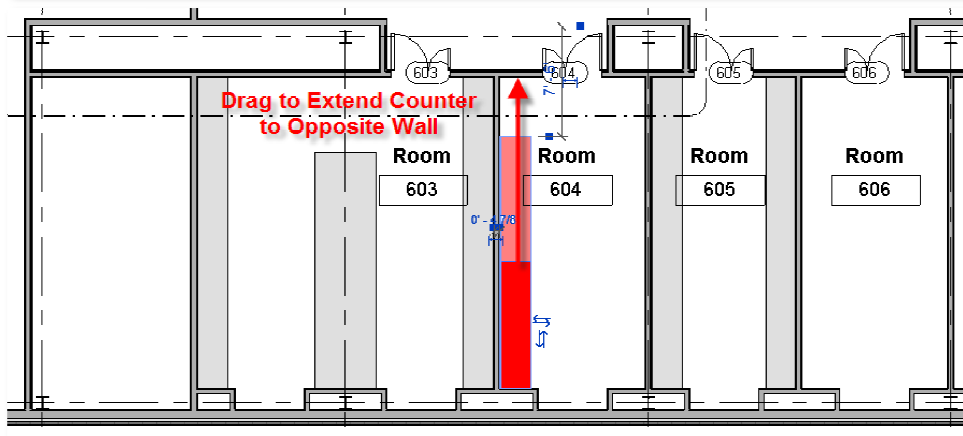
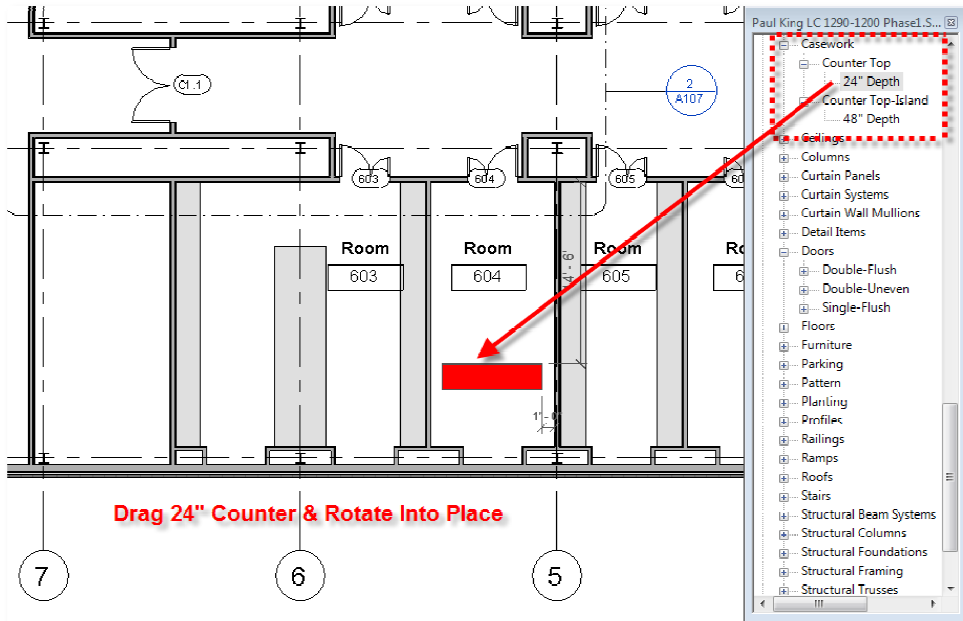
Insert > Load Family: Load a Family that is not in the current project



Load Casework > Domestic Kitchen > **Contertop and Counter Top-Island**

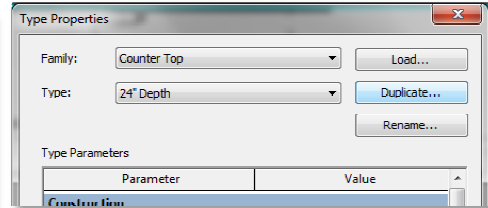
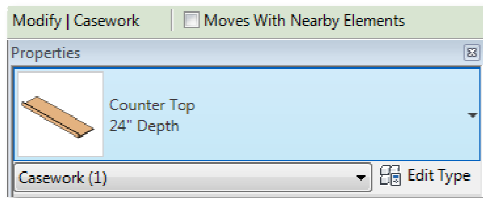


24" Counter: Drag the 24" counter from the Casework family in the Project Browser



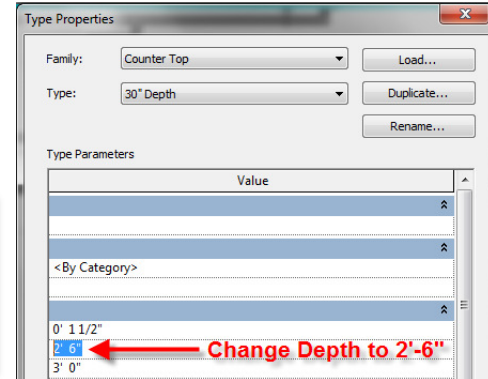
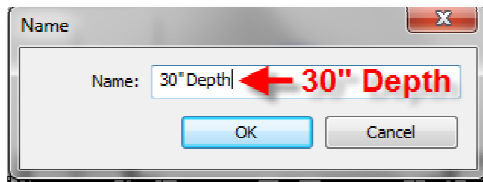
Spring 2011

New 27" Counter: Typical Laboratory Counters are 30" deep. Create one from the 24" counter. Select an existing 24" counter top then select **Edit Type > Duplicate**

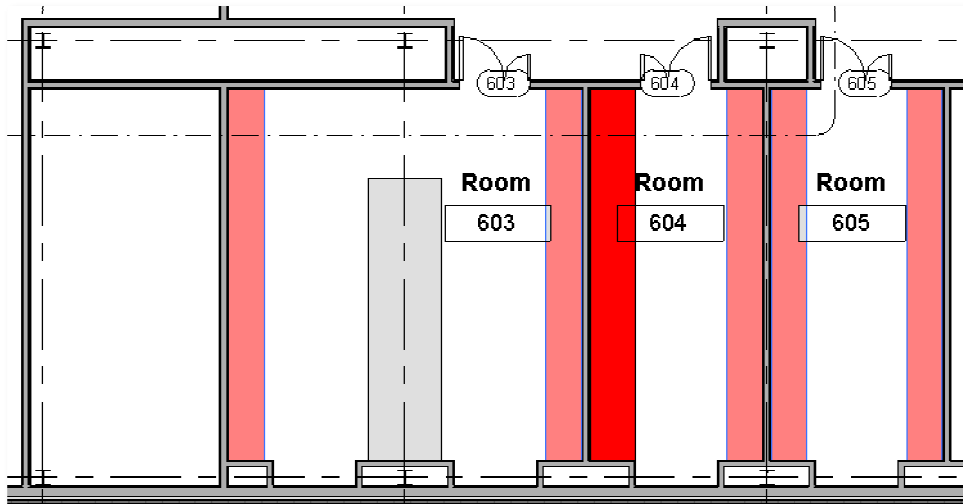


Name it **30" Depth**

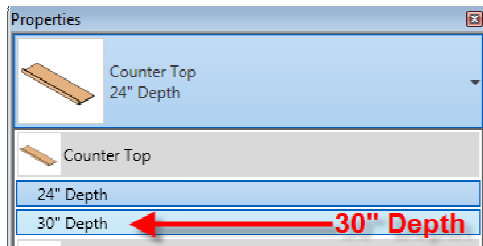
Type Properties > Change Depth to 2'-6"



Select Counters: Select all the existing 24" counter tops

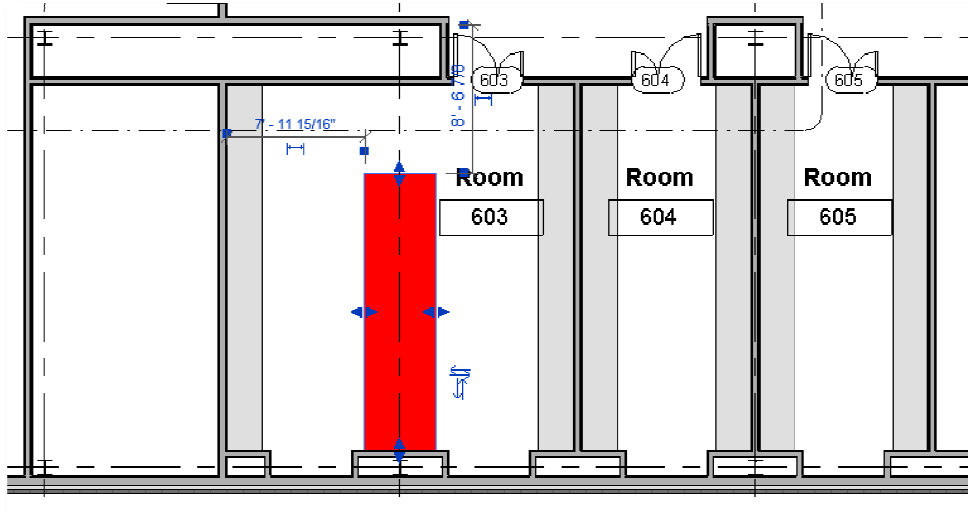


Replace Counters: Under Counter Top Properties Select the 30" Depth counter. See the update

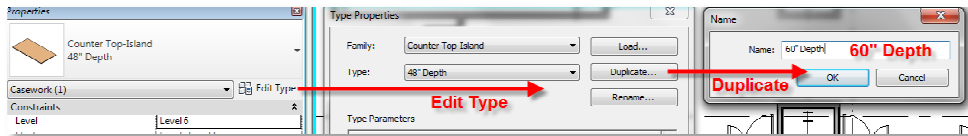


Spring 2011

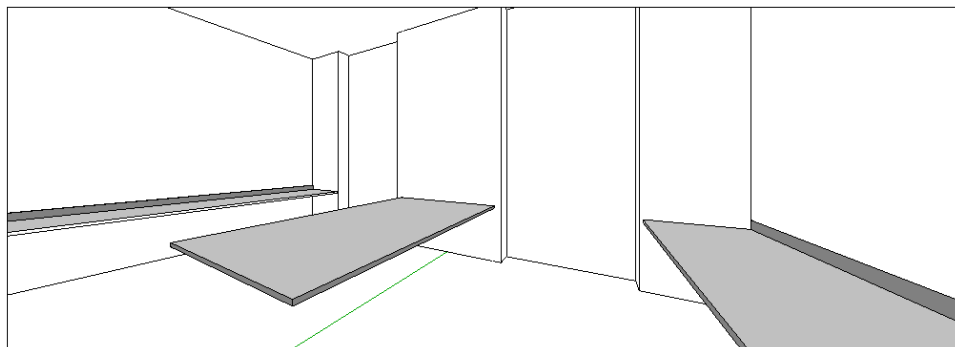
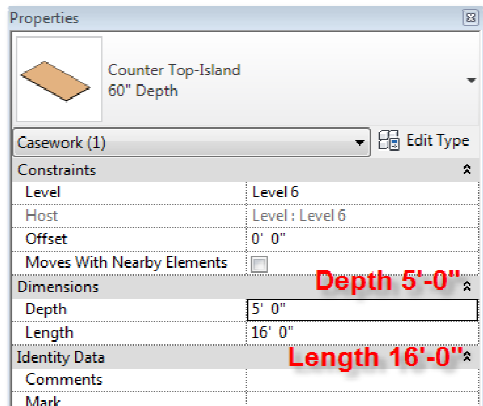
Island Counter: From the project Browser Add an Island Counter to your drawing



Duplicate Counter: Select an Island Counter > Edit Type > Duplicate > 60" Depth



Adjust Counter: Set Depth to 5'-0" & the Length to 16'-0"

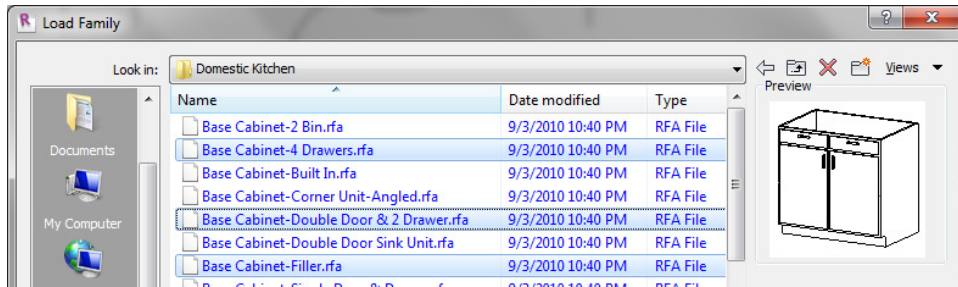


3d View Double Lab:

Spring 2011

Insert > Load Family: Select the following Base Cabinet Families

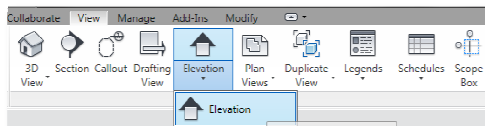
- Base Cabinet-4 Drawers
- Base Cabinet-Double Door & 2 Drawer
- Base Cabinet-Filler



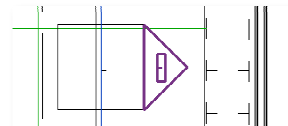
Add Cabinets: Add a **48" Double Door Cabinet** in the center back 1" from the counter edge
Add a **24" 4 Drawer Cabinet** on either side of the 48" cabinet
Add **3@ 48"** and **4@ 24"** cabinets alternating



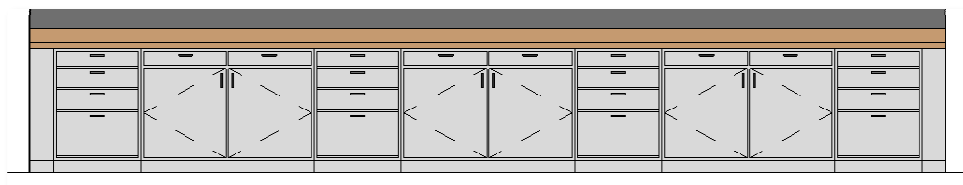
View > Elevation: Add new elevation view.



Select the key > Go To Elevation View



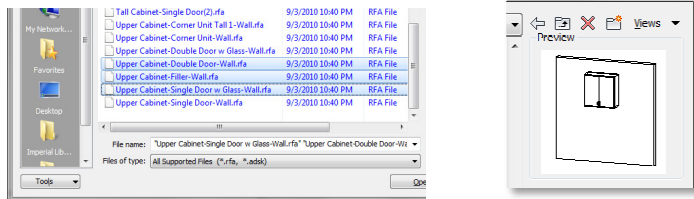
Elevation View: View of the base cabinets



Spring 2011

Insert > Load Family: Select the following Upper Cabinet Families

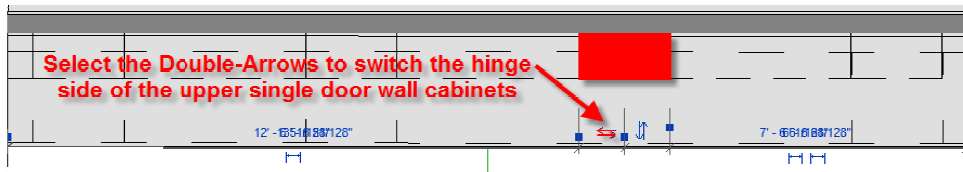
- Upper Cabinet-Double Door Wall**
- Upper Cabinet-Single Door w/ Glass-Wall**
- Upper Cabinet-Filler**



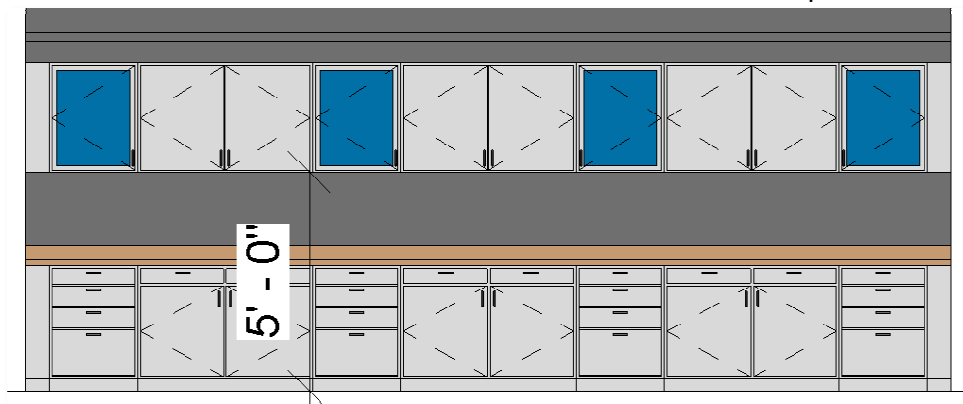
Add Cabinets: Work in the **Elevation View**. Add the matching wall cabinets 5'-0" from the floor
 Add a **48" Upper Cabinet-Double Door-Wall** aligned with the middle cabinet
 Add a **24" Upper Cabinet-Single Door Glass-Wall** on each side of the 48" cabinet
 Locate **3@ 48"** and **4@ 24"** wall cabinets alternating



Flip Door Swing: In plan view select the double arrow to switch the direction of door swing



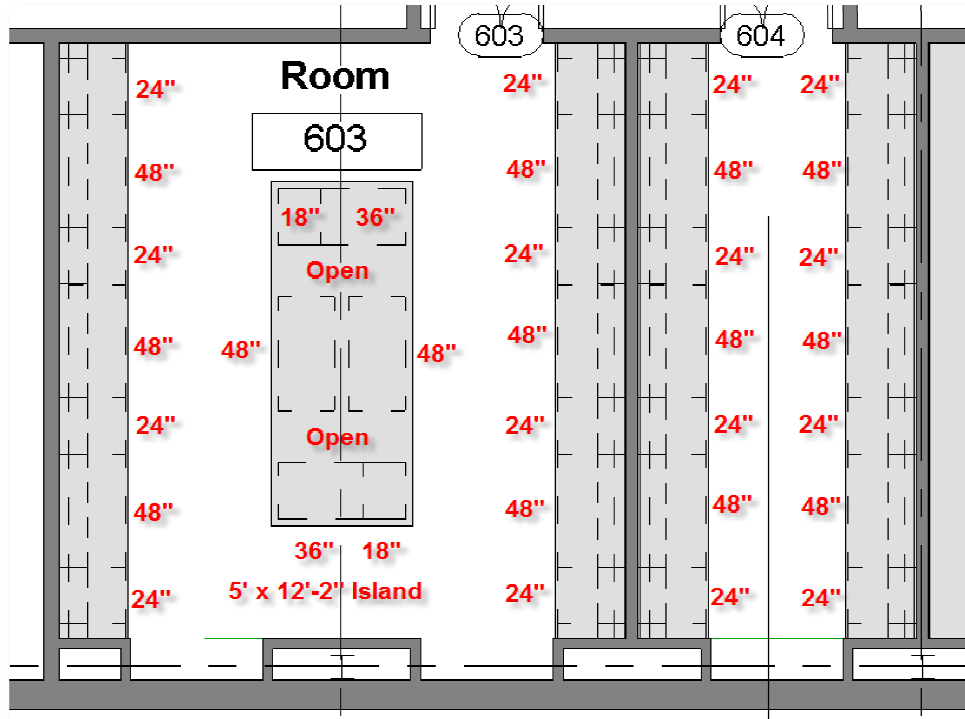
Add Filler Panels: Add a Filler Panel to either end of the wall cabinets to finish up



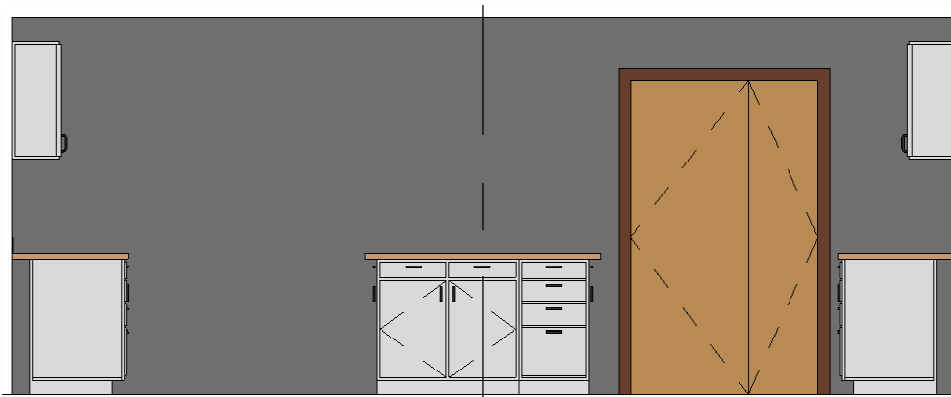
Spring 2011

Island Bench: The island bench is 5'-0" x 12'-2" with the cabinets set back 3" from the edge. Add a 36" Double Door and a 18" 4 drawer at either end. Add a 48" double door cabinet in the middle of each long side. There will be a space between cabinets.

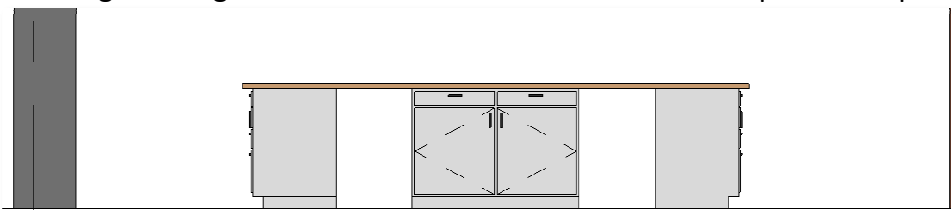
Completed Lab: Layout of a typical double and single lab



Island Elevation: Showing the short end with a 36" double door and a 18" 4 drawer cabinets

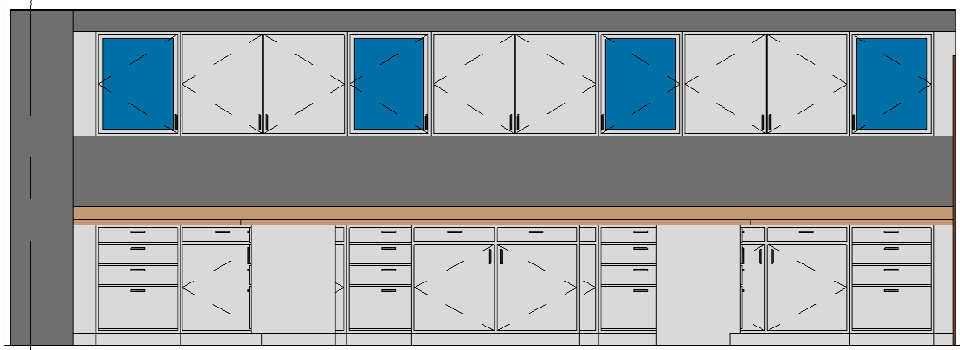


Island Elevation: Showing the long side with a middle 48 double door and open knee spaces

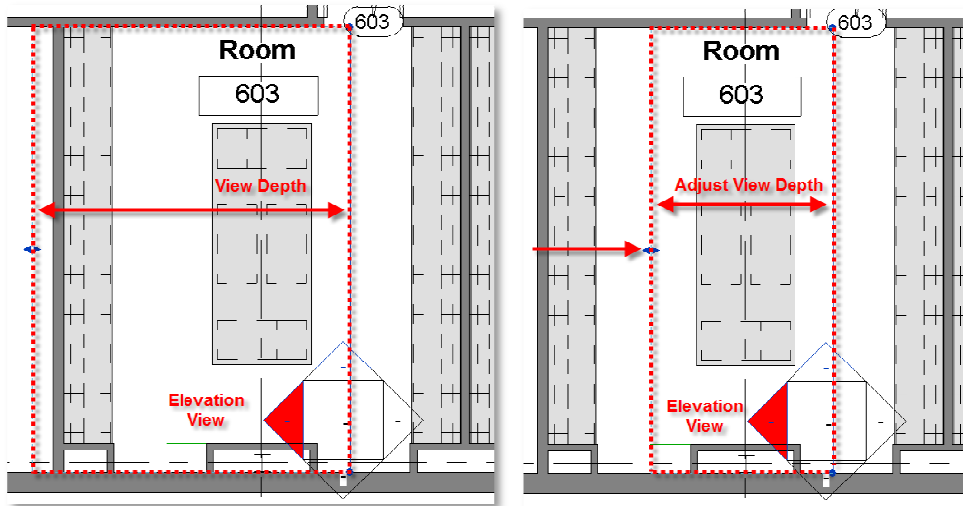


Spring 2011

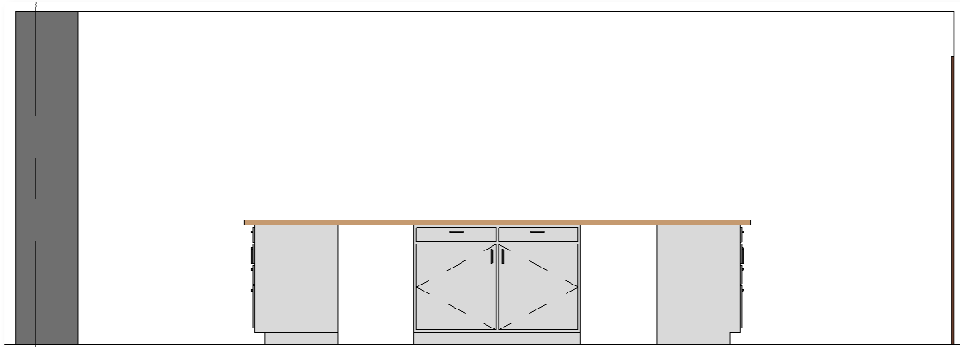
Default Elevation: The long elevation of the Island is confused with the cabinets beyond in the view



Adjust View Depth: From a plan view select the elevation key and drag to adjust the view depth



Island Elevation: A cleaner elevation with the depth adjusted



Alternate Method: As an alternate you can adjust the Elevation Far Clip Offset Properties

