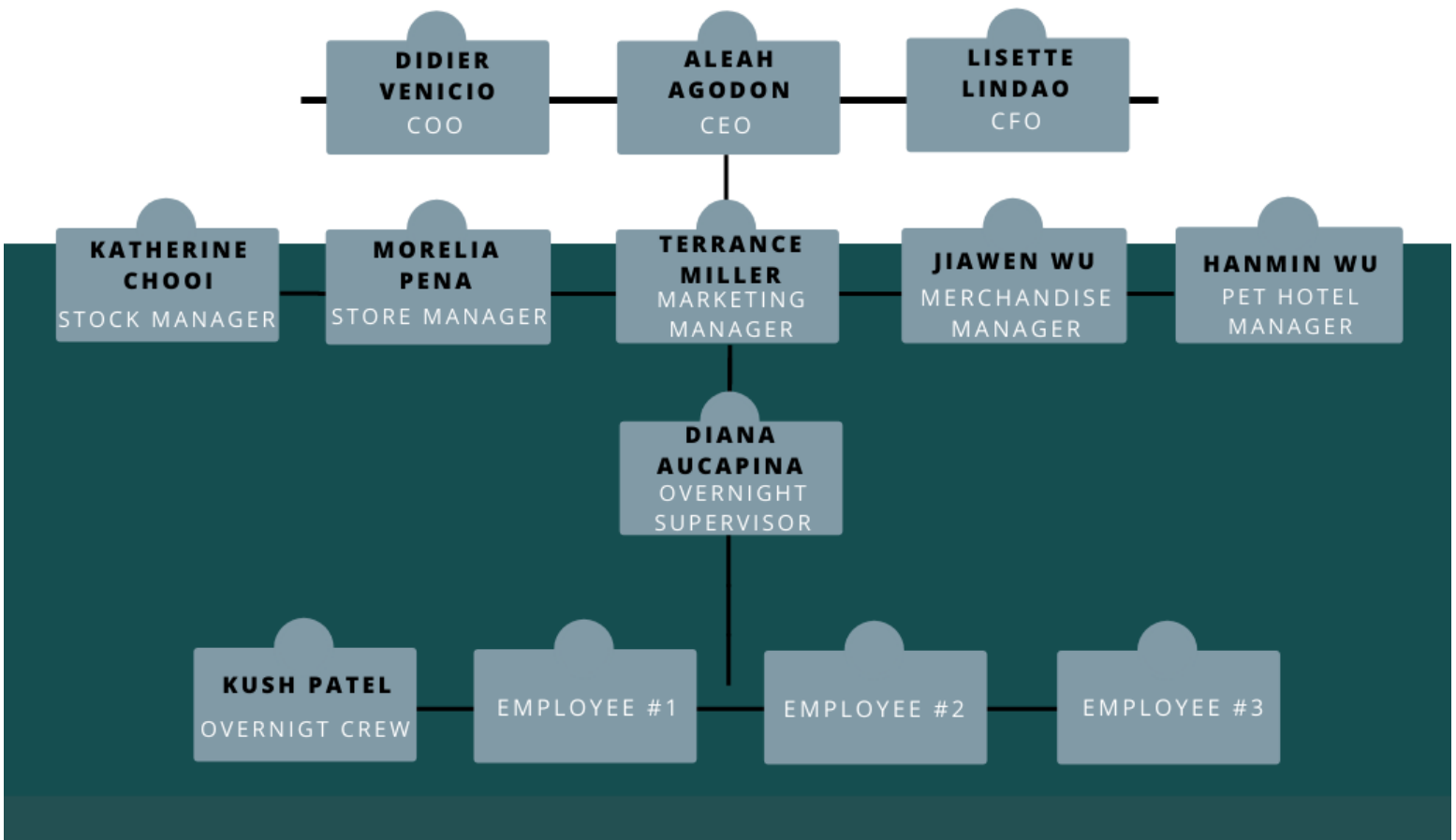


SECOND YEAR Year Report

For the Pets Group

Pet World



Chief Operating Officer- Didier Venicio

- Reports directly to the CEO
- Considered Second in Command
- Tasked with overseeing day to day administrative and operational functions of a business
- Handles internal affairs
- Can be responsible for production, research, development and Marketing.

Chief Financial Officer (CFO) - Lisette Lindao

- Managing finances and budgets of the company
- Processing invoices
- Manage finance record and receipts
- Prepare financial growth plans
- Risk management

Chief Executive Officer(CEO)- Aleah Agodon

- Creating solid relationships with management/team
- Outstanding Communication skills
- Assessing major corporate decisions
- Managing outcomes of the company
- Creating the most revenue growth
- In charge of ensuring the policy new hires
- Reading people and adapting to necessary management styles
- Seek guidance from board of directors

Stock Manager - Katherine Chooi

- Forecast supply and demand of the store
- Ensured shipments and address arrived on time
- Organized purchase detail based on database
- Place order and replenish stock quantity based on merchandiser requested
- Make sure purchases did not over budget
- Evaluate suppliers offers and negotiate profitable deals
- Work with warehouse team to test products quality

Store Manager- Morelia Pena

- Staffing
- Customer Service
- Stock Management
- Financial Management
- Organization
- Leadership

Marketing Manager - Terrance Miller

- Manages the company Website
- Social media management/ handler
- Copywriting and content management.
- Data analytics for the business i.e
- PR and corporate communications

Merchandise Manager- Jiawen Wu

- Maintain and track down inventory management records
- Explain and provide sales reports on how to improve customer engagement
- Negotiate the cost of inventory for multiple stores
- Prepare and train new staff members
- Analyze sales trends and monitor supply and demand
- Develop and oversee the planning and implement of visual merchandising strategy

Pet hotel Manager - Hanmin Wu

- Creating work schedules
- Hiring, training, and supervising other workers
- make sure cages, runs, and the overall facility is cleaned regularly
- make sure the animals are groomed, fed, exercised, and generally cared for
- Coordinate and supervise the operation of dog kennels

Overnight Crew Supervisor -Diana Aucapina

- Accomplish their responsibilities
- Demonstrating initiative and excellence customer service
- Responsible for material inventory; collects, enters and maintains work order data
- Engages in, support the business by carrying out goals and provide direction on related issues
- Promote cooperative team efforts among other staff
- Collaborates with management to supervise, motivate, contribute to the business

Overnight Crew- Kush Patel

- Desire to work non-traditional hours
- Keep a record of all items
- Interact with materials, store manager, customers
- Retrieve customer order and transport products
- Restocking and organizing items on shelves
- Updating inventory reports
- Make sure checking and labeling items with correct prices
- Good physical fitness
- Prepare everything need for the next day

NEW EXCEL SHEET FOR YEAR TWO

Second Year Pets World Excel

Titles	Names:	Salaries (\$)	Tax 50%	Gross Salary (\$)	Net Salary (\$)
Director/CFO	Lisette L.	55,000	27500	55,000	27,500
Director/CEO	Aleah A.	55,000	27500	55,000	27,500
Director/COO	Didier V	45,000	22500	45,000	22,500
Stock Manager	Katherine C	45,000	22500	45,000	22,500
Store Manager	Morelia P	35,000	17500	35,000	17,500
Marketing Manager	Terrance M	35,000	17500	35,000	17,500
Merchandise Manager	Jia W	35,000	17500	35,000	17,500
Pet Hotel Manager	Hanmin W	35,000	17500	35,000	17,500
Overnight Supervisor	Diana A	20,000	10000	20,000	12,500
Overnight crew	Kush P	15,000	7500	15,000	7,500
Employee #1	#1	14,400	7200	14,400	7,200
Employee #2	#2	14,400	7200	14,400	7,200
Employee #3	#3	14,400	7200	14,400	7,200
	Total:	418,200	209,100	418,200	211,600

Total Expenses	\$1,147,620			Income for the first year =
Gross profit	\$1,914,757			Gross Profit - Total Expenses - Annual Salary
Corporate Tax	70%	\$1,340,330		Cost =
				Total Expenses - Annual salary
Income for the second year	348,937.28			Taxes Calculation =
APR	5.00%			Total revenue & gain/ gross profit x percentage corporate tax (70%)
Cost	729,420	excluding salaries		
Taxes	1,340,330			

Income Spreadsheet Screenshot

INCOME STATEMENT		
PETS WORLD		
Income Statement		
For the Month Ended (DATE, YEAR)		
Revenues		
Sales		\$3,116,315.00
Less: Cost of Good Sold		
Cash Purchase	\$1,187,819.72	
Closing Stock	\$13,938	
		\$1,201,757.72
	Gross Profit	\$1,914,557
Expenses		
Wages Expenses	\$418,200	
Rent and Utilities Expenses	\$104,000	
Property Operation Expenses	\$80,000	
Interest Expenses	\$50,000	
	Total Cost Expenses	\$652,200
	Net Income	\$1,262,357

\$50,000	Office expenses
\$30,000	miscellaneous expenses
\$80,000	total property operation expenses

Interest Expenses =
Loan x APR 5%

Loan	\$1,000,000 / 5
APR	5.00%
Interest exp	\$50,000 / year

(sales-cost of sale = gross profit)

(gross profit - total expenses = Loss / net income)