

Portrait Retouching in

Photoshop

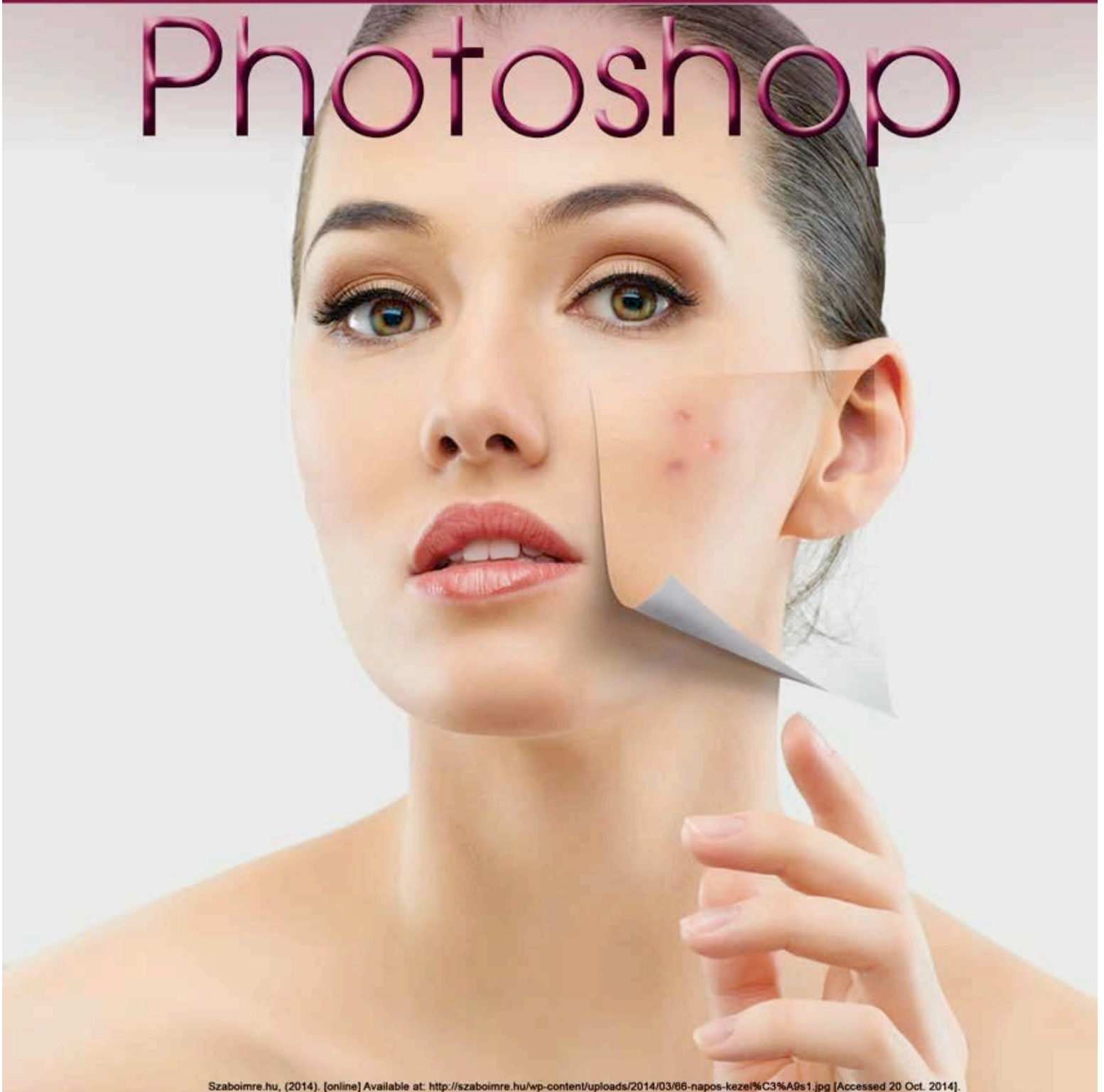


Table of content

Introduction	Page 3
Identify the purpose of Adobe Photoshop	Page 3-4
How to access Adobe Photoshop	Page 4
Identify the Adobe Photoshop Interface	Page 4-5
<i>Retouching tools:</i>	Page 5-6
The spot healing brush tool	
Healing brush tool	
Patch tool	
Red eye tool	
Clone stamp tool	
Pattern clone stamp tool	
Dodge tool	
Burn tool	
Sponge tool	
<i>Tool bar</i>	Page 6
Chapter 1	
<i>Retouching eyes:</i>	
Increasing contrast in the eye	Page 7-8
Changing eye color	Page 8-9
Reducing Dark Circles Under Eyes	Page 10
Chapter 2	
<i>Under the Skin:</i>	
Removing Blemishes	Page 11-12
Reducing Facial Stubble	Page 12-13
Creating porcelain looking Skin	Page 13-15
Chapter 3	
<i>Hair</i>	
Adding highlights	Page 16-17
Changing hair color	Page 17-19
Chapter 4	
<i>Lips</i>	
Making lips larger	Page 19-20
<i>Bibliography</i>	Page 21-22

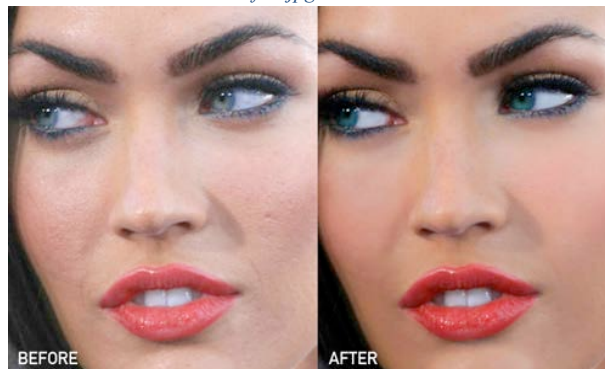
Introduction

Portrait Retouching in Photoshop will teach students how to edit portraits using the retouching tools (the spot healing brush tool, healing brush tool, patch tool, red eye tool, clone stamp tool, pattern clone stamp tool, dodge tool, burn tool, sponge tool and content-awareness) in cs6. In this book I will provide the definition of each tool, explain what they are used for, and a step-by-step tutorial on how to use the tools in an image. I choose this topic because I wanted to teach others what the retouching tools are and how to properly use them in Photoshop. In today's world many people are taking multiple #SELFIE (*A selfie is a self portrait photograph taken with a digital camera or cell phone*), waiting for the perfect picture to post on social media, but why take so many pictures when you can take one, bring it over to Photoshop, and make it perfect in just a few seconds.

Below I have included examples of some before and after images that have been retouched and enhanced using the Retouching tools in Photoshop.



Gretadesign.net., (2014). Retrieved 14 November 2014, from <http://gretadesign.net/wp-content/uploads/2012/03/megan-fox-before-after.jpg>



Img202.imageshack.us., (2014). ImageShack Image Hosting Service. Retrieved 14 November 2014, from <http://img202.imageshack.us/img202/1041/retouch6.jpg>

Identify the purpose of Adobe Photoshop:

Adobe Photoshop is the premier photo editing software tool available. Whether you are working on a webpage, PowerPoint presentation, or a document to be printed, Photoshop can be used to enhance your images.



Participants will learn about image file types, cropping images, compositing (putting several images together), ghosting images (for use as webpage backgrounds), using layers, creating masks, applying filters, and formatting text with bevels and other effects.

With Photoshop, you can:

1. Create original artwork.
2. Design graphics for a webpage or website.
3. Correct flaws and imperfections in a photograph.
4. Create a photo collage: a composition made up of several different photos.
5. Create a deceptively realistic photo that is not real.
6. Design smashing layouts for a classroom newspaper, brochure, or flyer.

Wtvi.com,. (2014). *Introduction to Adobe PhotoShop*. Retrieved 2 December 2014, from <http://www.wtvi.com/teks/ps/>

How to access Adobe Photoshop:

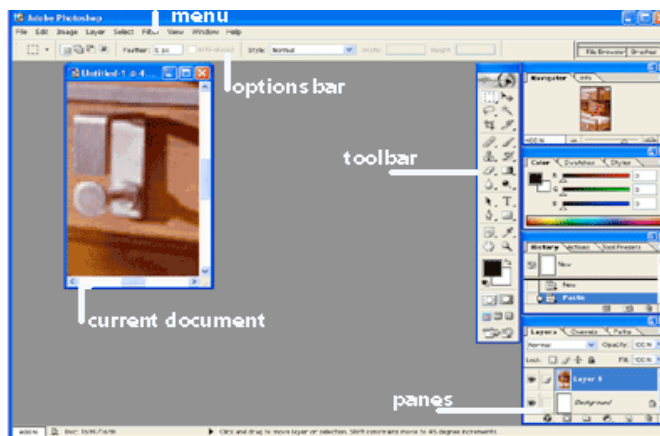
They're two ways to access Adobe Photoshop:

1. Launch Photoshop by clicking the Start menu or icon on the taskbar* (Windows) or clicking the Photoshop icon on the dock* (Mac).
2. Open the Adobe Photoshop CS6 folder in the application folder and then double click the Photoshop CS6 icon.



Identify the Adobe Photoshop Interface:

Elements of interface:

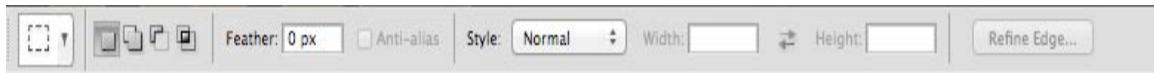


school.utexas.edu,. (2014). *Photoshop Basics-- iSchool Tutorials*. Retrieved 2 December 2014, from <https://www.ischool.utexas.edu/technology/tutorials/graphics/photoshop7/>

***Taskbar:** Taskbar is a bar located at the edge of the display of a graphical user interface that allows quick access to current or favorite applications.

***Dock:** The Dock is the bar of icons that sits at the bottom or side of your screen. It give access to many of the apps on your Mac (like Mail, Microsoft word Safari, and calendar). You can add your own apps, documents and folders. To use an app located on the Dock, just click on the icon.

Option Bar:

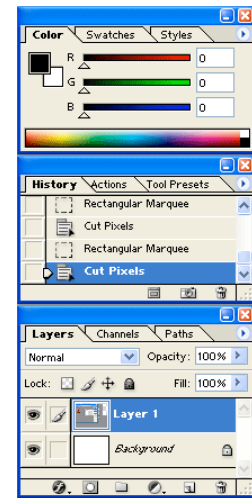


The **options bar**, is located directly underneath the menu. This is a useful tool when working with the different Photoshop tools. The Options Bar can help adjust the setting of the currently active tool.

(The option bar changes depending on which tool is being used)

Panels:

The **panels** play a big role in Photoshop's interface. A lot of the work we do on Photoshop involves the use of the panels. The Layers panel is where we add, delete, select and arrange the layers in our document. It is also used to add layer masks and layer effects. We add and work with adjustment layers using both the Adjustments and Properties panels to add effect to our image. We can also change our colors with the Swatches panels, and also go back to previous steps in our workflow with the History panel.



Retouching Tools:

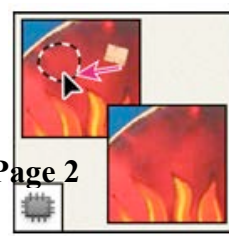
We all strive to capture that perfect picture every time, but we all know that perfect images will take sometime and it can be rare. That's where the magic of Photoshop's retouching tools comes in. The retouching tools include The Healing brush tool, The Spot Healing brush tool, Patch tool, Red Eye tool, Clone stamp tool, Pattern stamp tool, Dodge, Burn and Sponge tool. All of the retouching tools use the brushes palette, and many of them have opacity or pressure controls and also blending mode options.



The Healing Brush tool paints with a sample or pattern to repair imperfections in a image.

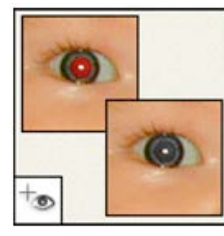


The Spot Healing Brush tool removes blemishes and objects



Page 2

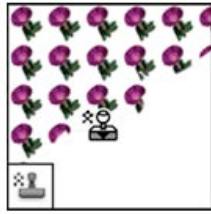
The Patch tool repairs imperfections in a selected area of an image using a sample or pattern.



The Red Eye tool removes the red reflection caused by a flash.



The Clone Stamp tool paints with a sample of an image.



The Pattern Stamp tool paints with part of an image as a pattern.



The Dodge tool lightens areas in an image.



The Burn tool darkens areas in an image.

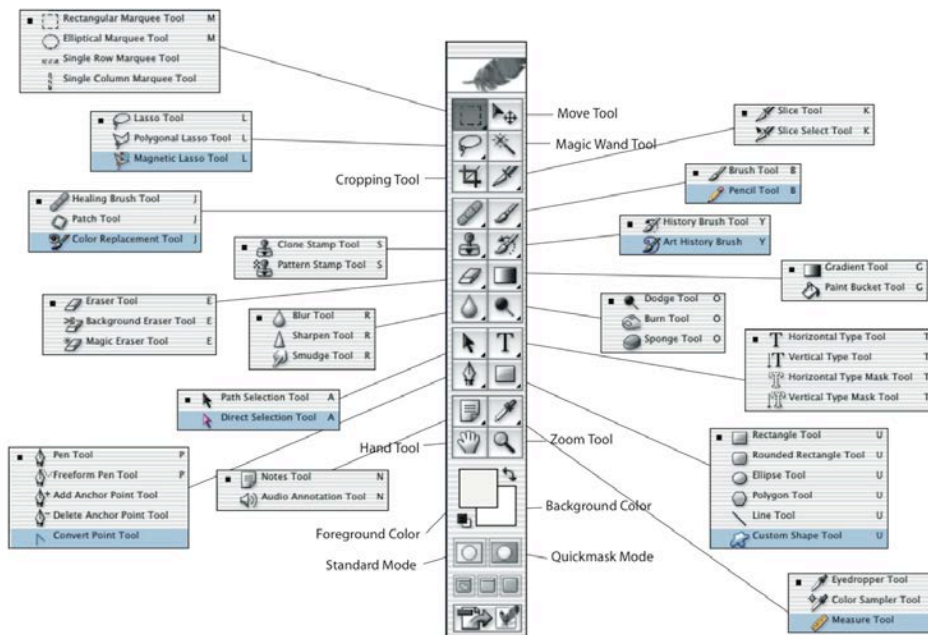


The Sponge tool changes the color saturation of an area.

(Helpx.adobe.com, (2014). *Photoshop Help | Tool galleries*. [online] Available at: <http://helpx.adobe.com/photoshop/using/tools.html> [Accessed 20 Oct. 2014].)

Toolbar:

The **Toolbar** contains different icons that represent the different tools Photoshop offers to alter and create images. It includes tools that select specific areas of images, changing the colors of the image, stretching, transforming, and erasing parts of an image, and many more effects.



(Profoto.lviv.ua, (2014). [Online] Available at: <http://profoto.lviv.ua/statja-img/ps/ps-tools/tools.png> [Accessed 20 Oct. 2014].)

Retouching Eyes

When it comes to catching attention nothing seems to have the power to captivate the audience more than a person's eyes. In this chapter we are going to learn different retouching techniques to help enhance the eyes by bringing out colors, adding highlights, and generally making them look sharper.



(Helpx.adobe.com, (2014). *Photoshop Help | Tool galleries*. [online] Available at: <http://helpx.adobe.com/photoshop/using/tools.html> [Accessed 20 Oct. 2014].)

Increasing contrast in the eye:

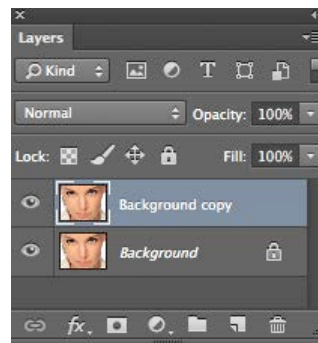
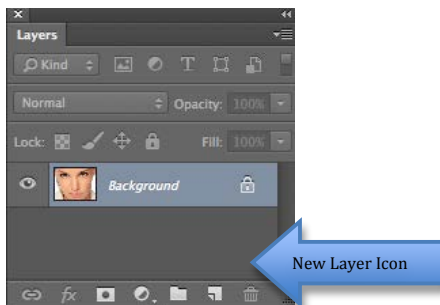
We all want our eyes to look energetic in photos, but sometimes the camera just can't capture all the details in the eye. A great way in making eyes look captivating is by adding contrast. When adding contrast to the eye you are bringing out the color and depth of the eyes, without adding any color to it. This method is a natural way to add color and contrast without it appearing unrealistic.

Step One:

In this image, her eyes look flat and boring because of the lack of contrast. The first step is to duplicate the layer of the image to create a copy. You can duplicate the layer by dragging the background layer panel onto the create a new layer icon located at the bottom of the layers panel. By creating this duplicate you are working with a copy of the image and not the original. You wouldn't want to damage the original due to the fact for if you make a mistake.



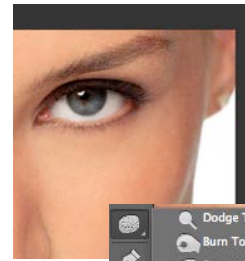
Topnews.in, (2014). [online] Available at: <http://topnews.in/usa/files/Face.jpg> [Accessed 21 Oct. 2014].



(New Layers Panel)

Step Two:

Zoom in tight into the eyes. Select the top layer then click on the sponge tool located at the toolbar.



Step Three:

At the opinion bar located at the top change the mode to saturate then click on the eye. (You will then notice the eye brighten)



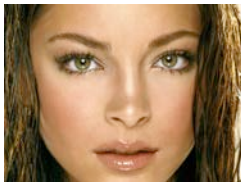
Before



After

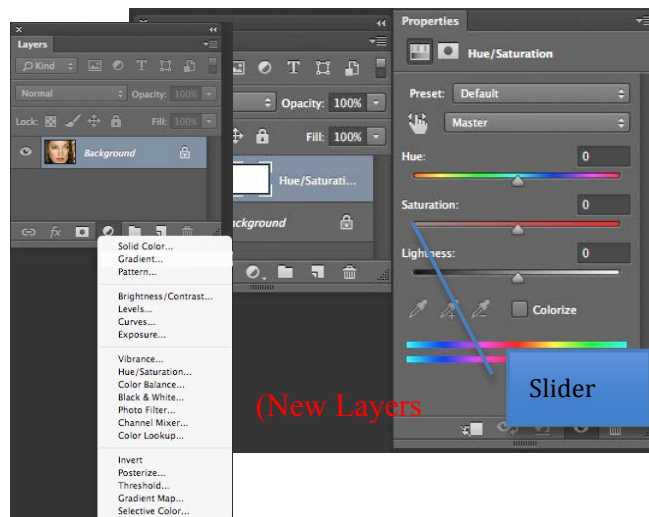
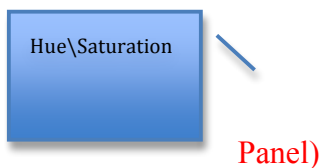
Changing Eye Color

There are many reasons why people might want to change their eye color. One of the reason could be because they would want to stand out. Another reason could be to change their appearance. In this image the subject eyes are green and we're going to change them to blue.



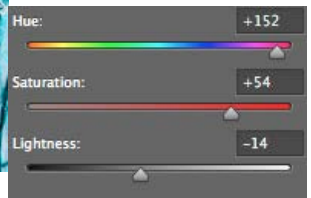
Step one:

The first step is to select "create new layer icon" at the bottom of the layer panel and click on Hue\Saturation. This is going to change the color of the whole image.



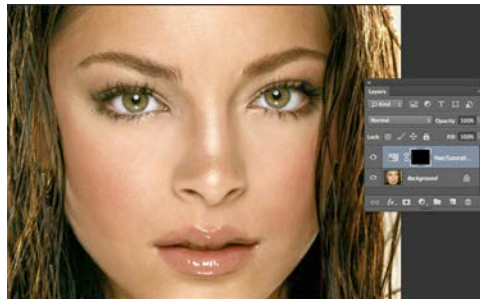
Step two:

Second you want to zoom into the eyes so you can work on that specific area (eyes). Then in Hue/saturation pick the new eye color by dragging the hue slider. Here I dragged the hue slider over to +152, this made the entire image turn blue. You can also control how intense the color is by moving the saturation and lightness slider. I used a saturation of +54 and lightness of -14. By turning the image blue, I created the color I want to change her eyes to. In step three I will show you how to inverse the image so that image isn't blue and go back to normal. Keep in mind we still have that blue layer.



Step Three:

To change the color of the image back to its original state, press Command+I (Mac) Control+I (PC) on the keyboard. This will invert the layer mask, making the mask black and hiding the blue tint.

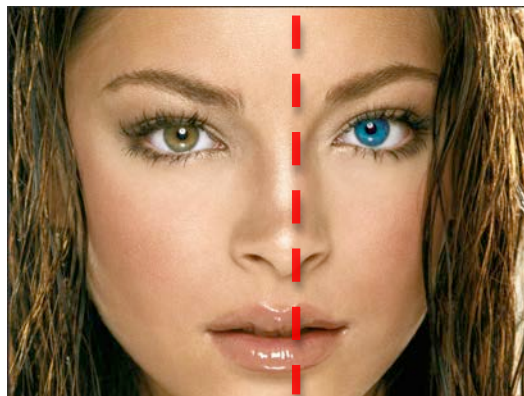


Step Four:

Finally select the brush tool located on the toolbar to make sure your foreground color is set to white and then paint over her eyes. This will bring out the blue color that we created in step two.

Before

After

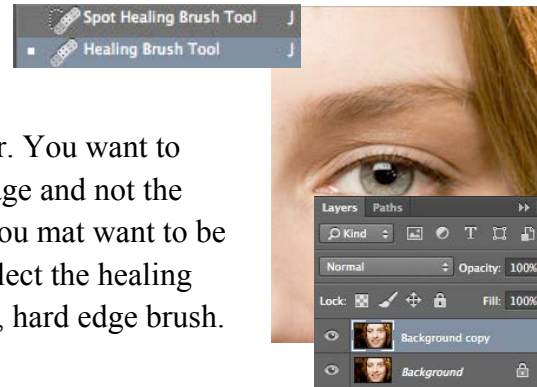


Reducing Dark Circles Under Eyes:

Even though you may not see it in magazines, most people have bags and dark circles under their eyes. I will demonstrate how to reduce and remove them using the healing brush tool and the clone stamp tool.

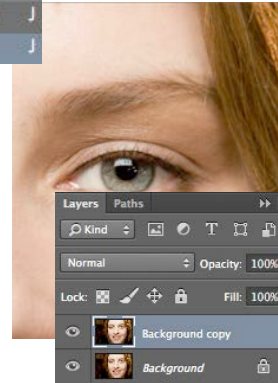


(n.d.). Magazine mode : beauté, people, culture, vie perso, astro, votre magazine mode Glamour. Retrieved from <http://www.glamour.com/images/beauty/2013/05/how-to-hide-undereye-bags-dark-circles-main.jpg>



Step One:

First start by zooming in to the eye area and duplicating the layer. You want to create a duplicate so that you are working with a copy of the image and not the original. You wouldn't want to work with the original because you may want to be able to refer back to original image if any mistakes are made. Select the healing brush tool located on the toolbar. In the option bar select a small, hard edge brush.



Step two:

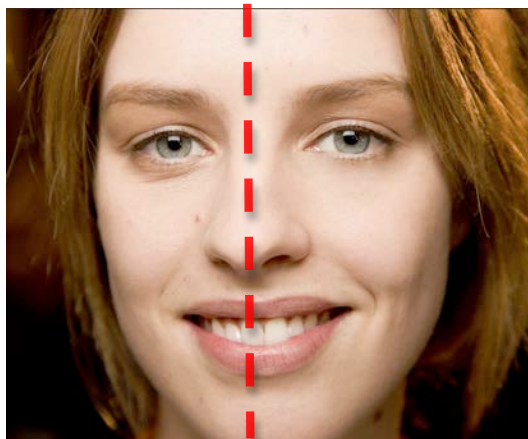
You can now start removing the dark by pressing (Mac: Option-clicking Windows: Alt-Clicking) on the keyboard, and in a near by area with the cursor select a similar skin tone that might match the skin around her eyes. Selecting a similar skin that matches around eyes is going to help the skin blend when later painting over her dark circles.

Step Third:

Finally select the clone stamp tool located in the toolbar. In the option bar, change the opacity to 40% and the mode to "lighten". You want to lower the opacity and change the blending mode so that you get a soft brush. Press and hold (Mac: Option-clicking Windows: Alt-Clicking) in an area near the eye that isn't affected by the dark circles and paint a stroke over the dark circle to completely remove them.

Before

After



Note: To control the amount of dark circle appearing under the eye just lower the opacity of the top layer.

Chapter Two: *Under the Skin*

Many people tamper around with the smoothness of their skin. Makeup does not always cover the flaws that one have on their skin. When makeup isn't enough, Photoshop can do the work. In this chapter, you will learn how to hide those flaws in your skin. In just a few steps, you will learn how to remove blemishes from the skin, how to remove unwanted facial hair, and how to create porcelain looking skin.



(n.d.). Synergie Skin® Cosmeceutical Skincare & Makeup Manufacturer. Retrieved from <http://www.synergieskin.com/wp-content/uploads/2014/03/peel.jpg>

Removing Blemishes:

When working with the skin it is best to start removing blemishes. Removing blemishes will make your skin look smooth and clear. You can fix these flaws by using The Healing Brush tool. This tool will allow you to fix any imperfections in an image.

(n.d.). HOME - 10amBeauty. Retrieved from <http://10ambeauty.com/wp-content/uploads/2013/03/NARS-Radiant-Concealer-Review-Profile-Before.jpg>

Step One:

First we're going to use the spot healing brush tool to remove the blemishes. Select the tool (what tool) located in the toolbar, then choose a brush size that is just as little as the blemish you want to remove. Lower the hardness to 75% to get a smoother blend. You can change the size of the brush, hardness, and blending mode on the option bar located at the top of your workspace.



Step Two:

Second create a new blank layer. You can create a new layer by selecting the new layer icon on the layers panel. Creating a new blank layer will allow you to use the spot healing tool without changing the original layer. Zoom in onto the area that you'll be working on to make it easier to remove the blemish.

Step Three:

Finally Press and hold (Mac: Option-clicking Windows: Alt- Clicking) on the keyboard. Select a clean area near the blemish to copy the pixels in that area. This is going to allow

you to cover the imperfection on her skin. Now move the cursor directly over the skin to remove unwanted blemish. This will allow the copied pixels to go over the unwanted blemish, causing them to look smoother.



Reducing stubble

This is a quick way to digitally get rid of facial stubble. Unwanted facial hair is one of the main reasons why people use this enhancement.

(n.d.). The Shaving Emporium - Male Grooming & Shaving Tips. Retrieved from <http://shavingemporium.co.uk/wp-content/uploads/2014/01/beard.jpg>

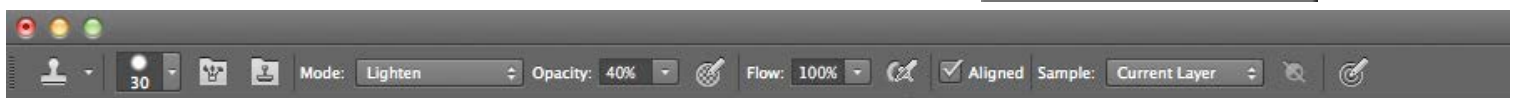
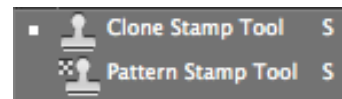
Step One:

First if you look at this image you would notice that the male has a couple days of hair growth. To start removing the stubble you want to duplicate the original layer. Duplicating the original layer will allow you to work on a copy of the image and not the original. You always want to keep the original layer untouched just in case you make a mistake and may want to refer back to it in the future.



Step Two:

Second select the Clone Stamp Tool located on the tool bar, then on the option bar change the blending mode to “Lighten” and lower the opacity to 40%. By changing the blending mode your telling the tool to only affect pixels that are darker then the area sampled.



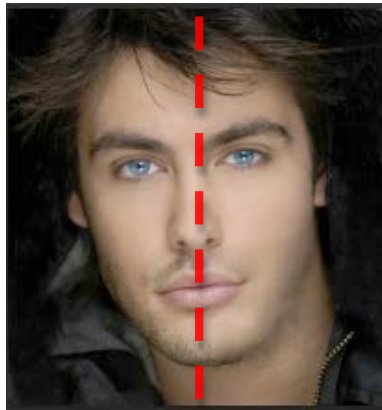
Step Three:

Third we are now going to take a sample of the pixels from a clean area around his face. You can copy the wanted pixels by selecting a small, soft edge brush and Press and hold (Mac: Option-clicking Windows: Alt- Clicking) on the keyboard.

Step Four:

Finally, with the clone stamp tool slowly paint over the facial stubble. Continue resampling around the face to get smooth looking skin.

Before After



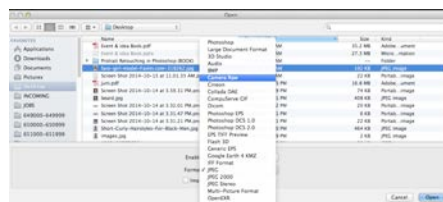
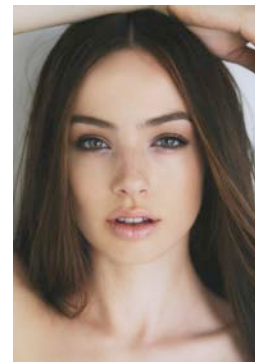
Creating porcelain looking skin

When it comes to skin care, people are always looking for the perfect skin products that will give them the kind of porcelain skin they see in models in magazines. Having flawless, even toned skin that’s free of blemishes is hard to have, but why buy skin care products when Photoshop can do the job. With this technique you will learn how to change someone’s skin tone from normal to smooth and flawless porcelain skin.

(n.d.). Polyvore: Discover and Shop the Latest in Fashion, Beauty and Home. Retrieved from <http://www.polyvore.com/cgi/img-thing?.out=jpg&size=l&tid=53564364>

Step One:

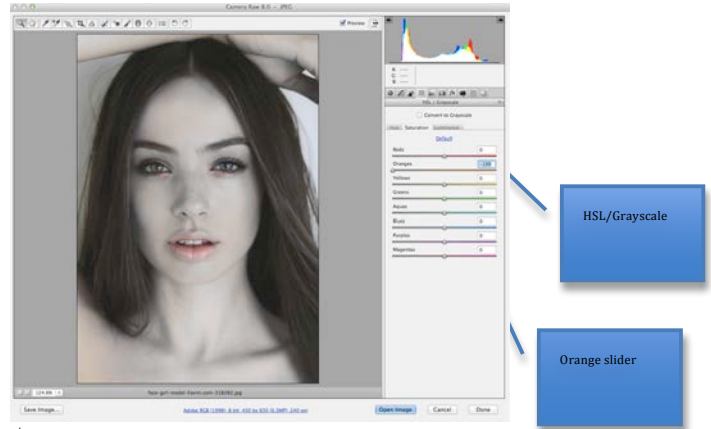
First, you want to open the image you will be working on as a camera raw. A Camera Raw file contains unprocessed picture data from a digital camera. The camera raw option provides information about how the image was captured, exposure settings, and white balance setting. When you open the file in Adobe Photoshop CS5, the built-in Camera Raw plug-in interprets the Raw file on your computer, making adjustments for image color and tonal scale (n.d.). Retrieved from <http://www.dummies.com/how-to/content/use-camera-raw-files-with-photoshop-cs5.html>.



To open an image as a camera raw we first select file from the top menu bar, click on open (a dialog box* will pop up), select camera raw from the format menu, and then click on open. We're opening up the file as a camera raw because we will need the orange slider in the HSL panel that doesn't appear in Photoshop's normal hue/saturation feature.

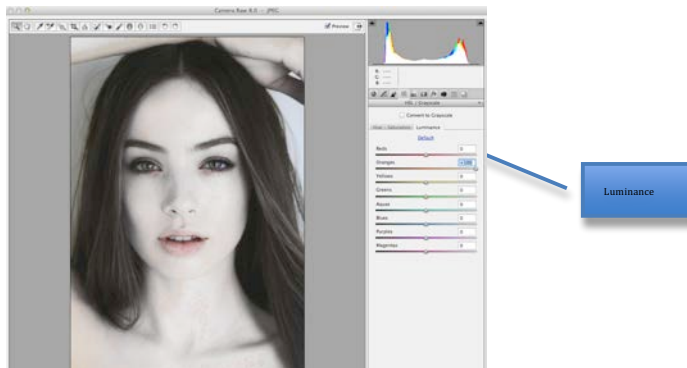
Step Two:

Once the image is open as a camera raw, select the HSL(Hue, Saturation and Luminance)/Gray scale. *HSL/Gray scale is used to look at the colors and tones in our images as RGB (Red, Green and Blue) helping separate the amount of color and brightness.* After selecting the HSL/Gray scale tab drag the orange slider all the way to the left. You will start to notice the whole image turns grey.



Step Three:

On this step we're going to use the luminance tab which is used to control the brightness of the color range. Click on the Luminance tab and drag the orange slider to the right, you'll notice her skin is turning white. In the future we may want to refer back to the original image to make some changes without affecting the original image. The trick is to open the image as a smart object. Smart Objects are layers that contain image data from raster or vector images. Smart Objects conserve an image's content with all its original characteristics, not allowing you to perform destructive editing to the layer. You can open the image as a smart object by holding shift on the keyboard and clicking on open) so we can later return to the camera raw dialog by double-clicking on the layer's thumbnail.



Step Four:

Duplicate the smart object layer. Duplicating the layer will allow you to edit the layer without having to damage the original image.

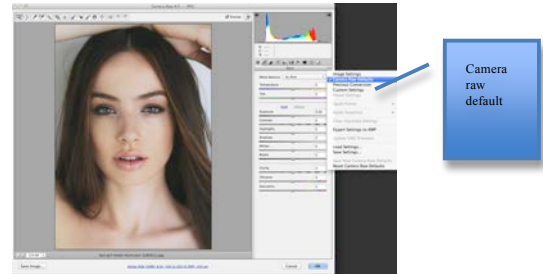
* **Dialog box:** A dialog box is a small area on the screen, in which the user is providing information or select commands.

Step Five:

Double click on the layer thumbnail located on the layer panel to open the layer that we just duplicated as a camera raw. Select the HSL/Gray scale panel and click on the saturation tab on the top right next to the HSL\Gray scale tab. The Saturation tab indicates how intense a color is. We're going to click and drag the red slider to the left in order to get back some of her original skin tone and click on ok to apply the changes.

Step Six:

After we've made the changes on the camera raw dialog we're going to add a layer mask to the duplicated layers that we just edit in step five. A layer mask in Photoshop is used to control a layer's transparency. It's good when you want to hide or reveal a specific part of an image. When working with layer mask it's good to know that white shows the area and black hides the area. We're going to add a black layer mask to hide this layer behind a black mask. Press and hold the option key on the keyboard and click on the add layer mask icon. Press "D" on the keyboard to set your foreground color to white. Setting your foreground color to white later allows you to reveal what's behind the black layer mask. Then select the brush tool with a medium soft edge brush, and paint over the pink areas face.

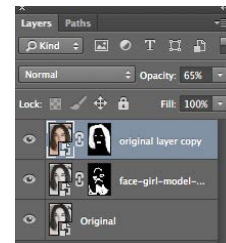


Step Seven:

Duplicate the original Layer so that we can now bring back some of the original colors. Drag the duplicate of the original layer all the way to the top on the layers panel and double click on the thumbnail to open it up as a camera raw. On the right side click on the top down menu and select camera raw default to reset the image to how it looked when it was first open.

Step Eight:

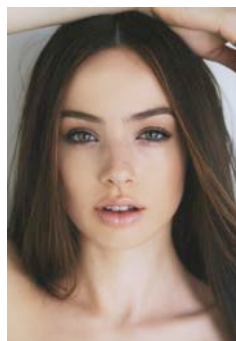
Add a black layer mask to the layer we've reset in step seven. With a white foreground using the brush tool paint the hair, lips and eyes.



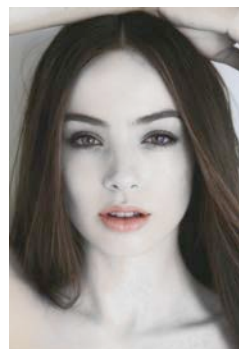
Step Nine:

Lower the Opacity of the top layer on the layers panel to 65%. Opacity is a feature in CS5 that allows you to make a layer more or less transparent. You want to lower the opacity of the top layer so that it blends in with the other layers.

Before



After



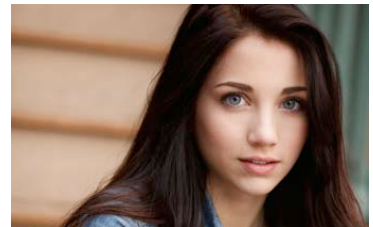
Chapter 3

Hair

In this chapter we're going to look at simple and easy ways to change hair color in Photoshop by tinting and coloring someone's hair in a photo. It is to The techniques we'll be learning gives us control over the hair changes were going to make, and we are going to be able to go back any time we want and change the hair color without having to redo all the work. These techniques can be used on any photos (Yourself, family or friends) to see how a different hair color or style would look.

Adding highlight to hair

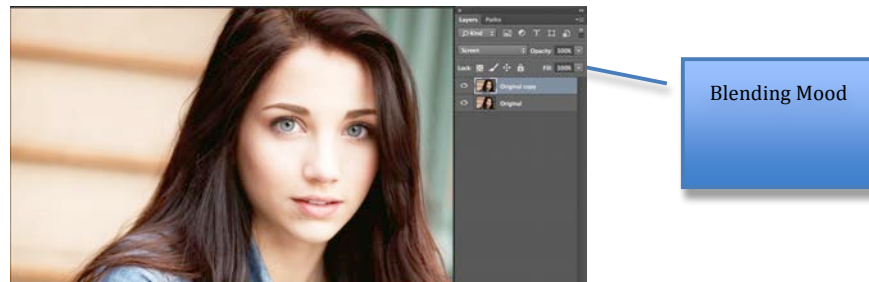
Highlighting your hair is very common especially when wanting to change your look. (Adding highlights gives your hair more volume, and dimension to your overall look, so thin hair looks thicker and thick hair looks even thicker.) (Why would you want thick hair to look thicker, when its already thick?) I will be showing you how to add highlights to a photo, so that you can try a different look without having to damage your own hair.



(n.d.). Retrieved from <http://flippywall.com/wp-content/uploads/2014/08/Model-Emily-Rudd-Model-Fahsion-Show.jpg>

Step One:

First, you want to create a duplicate of the original layer. Then we're going to make the whole image brighter by changing the blending mood from normal to screen*.



Step Two:

Second we're going to add a black layer mask to the duplicate layer we create in step one. Adding a black layer mask will hide this layer behind a black mask. Press and hold the option key on the keyboard and click on the add layer mask icon. Press "D" on the keyboard to set your foreground color to white. Setting your foreground color to white later allows you to reveal what's behind the black layer mask.

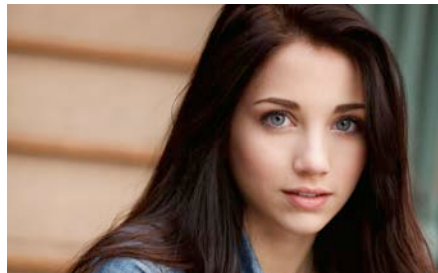
* **Screen:** Looks at each channel's color information and multiplies the inverse of the blend and base colors. The result color is always a lighter color. Screening with black leaves the color unchanged. Screening with white produces white. The effect is similar to projecting multiple photographic slides on top of each other.

Then select the brush tool with a small soft edge and set your opacity to 100%. All these changes can be made on the option bar. Start painting over her hair with the brush tool (you will start to notice her hair getting brighter).

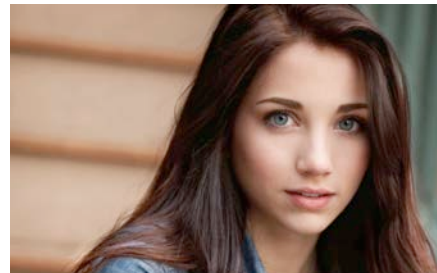
Step three:

Finally lower the opacity of the duplicated layer to 70%. We want to lower the opacity a little so that both the original layer and the duplicate of the original layer blend.

Before



After



Changing hair color

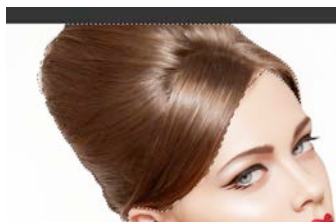
Sometimes you may want to try a new look but you're afraid it may not look so good. Using the photo below I will demonstrate how to change her hair color from brunette to grey. This is a technique you can use on any image of you or a friend to see how a different hair color would look.

(n.d.). Impress. Retrieved from <http://impressdressdecor.com/wp-content/uploads/2014/04/How-to-Build-a-Modeling-Portfolio-for-Free-31.jpg>



Step One:

First using the quick selection tool located on the toolbar make a selection around her hair. The quick selection tool selects similar pixels based on texture, tone and color. The tool works more like a brush, allowing us to select areas simply by "painting" over them.



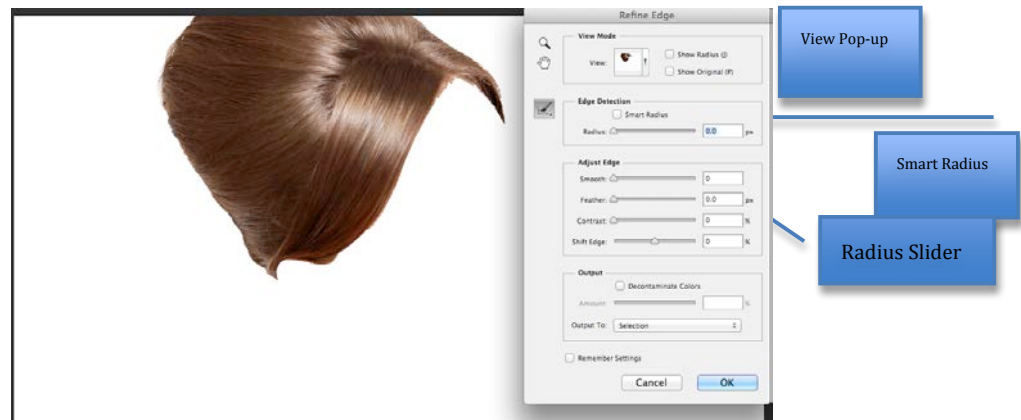
Step Two:

Once you've made the selection, on the option bar click on the refine edge dialog. The refine dialog gives you a preview

of the selection you've made in step 1. On the view option at the very top click on the thumbnail and select a white background color, so that we can view our selection on a white background (it is possible to view your selection in different backgrounds). Adding a white background isolates the selection.

Step Three:

Your selection may not be perfect; to get a better selection underneath the view mode section you would see the edge detection section. On the edge detection section Photoshop tries to detect where the edges of your selection should actually be. It does this by analyzing the areas surrounding your original selection outline. You can active and adjust the edge detection by simply clicking on the smart radius box, then dragging the sliders either right to increase or left to decrease the px size*. I have dragged the sliders right to increase the px size to 12.



Step Four:

After you've pressed ok on the refine edge dialog, the dialog goes away. Click on the "create new" adjustment layer icon at the bottom of the layer panel and select hue/saturation. Creating an adjustment layer allows you to make non-destructive adjustments to the image. The Hue/Saturation command adjusts the hue (color), saturation (purity), and lightness of the entire image.

Step Five:

Finally we can start changing her hair color by moving the hue (color) slider from left to right on the adjustment dialog. Here I've dragged the sliders to the right on to -95 (you'll start to see her hair turns purple), and then I drag the saturation slider to -82 to get the grey shade we want.

***px**: Photo print size



Before



After



Chapter 4

Lips



(n.d.). AWS | Amazon Simple Storage Service (S3) - Online Cloud Storage for Data & Files. Retrieved from http://s3.amazonaws.com/rapgenius/red-lips_1024x768_29987.jpg

When looking at a portrait, what's the first thing you see? The eyes, right? After that people tend to look down to the lips and mouth area. (Aren't lips and mouth the same?) In this chapter I will demonstrate different ways to enhance your lips using Photoshop.

Enhancing the Lips

Lips are a noticeable feature on the face, everyone wishes to have perfectly shaped. The shape of your lips plays an important role in terms of how one looks. This is why people with thin lips often complain about the shape of their lips. I will be demonstrating you how to enhance your lips by making them bigger in Photoshop.



Step One:

First you want to open the image on Photoshop by dragging the image to the PS icon or selecting file> open in PS.

(n.d.). Wallpaperciv | Free blog with the best wallpaper HD collections. Retrieved from <http://wallpaperciv.com/wp-content/uploads/2014/06/Nina-Dobrev-Fashion-Model-Pics.jpg>

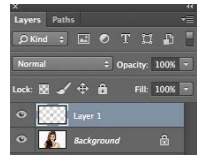
Step Two:

Once the image is opened on PS zoom in tight on to her lips. You want to zoom in on her lips to make it easier for you to make the selection later on. Then using the lasso tool located in the toolbox select around her mouth. The Lasso Tool allows you to select freeform objects.



Step Three:

Now we want to soften the edges of the selection we've just made. By softening the edges you are creating a natural surroundings instead of a freeform selection. We can do that by changing the feathering effect on the option bar to 10. After create a duplicate of the original layer.



Step Five:

We now want to be able to free transform the selection on the duplicate layer we created in step four so that we are able to manipulate the size of the selection. Press Command-T (MAC) Control-T (PC) to activate the free transform-bounding box around the lips.

Step Six:

On the right side of the option bar you will see a chain icon. You are going to click on the chain icon, which will lock both the wide and height of the transform-bounding box. Then change the percentage of the transform bounding G Box to 115% (you will notice her lips got bigger).



Step Seven:

Finally add a white layer mask to the duplicated layer. Select the brush tool located on the toolbox, on the option bar change the brush to a small soft brush. Make sure your foreground color is black and brush along any visible edges to make it blend.

Before

After



Reference Page

1. *Gretadesign.net*,. (2014). Retrieved 14 November 2014, from <http://gretadesign.net/wp-content/uploads/2012/03/megan-fox-before-after.jpg>
2. *Img202.imageshack.us*,. (2014). *ImageShack Image Hosting Service*. Retrieved 14 November 2014, from
3. *Wtvi.com*,. (2014). *Introduction to Adobe PhotoShop*. Retrieved 2 December 2014, from <http://www.wtvi.com/teks/ps/>
4. <http://img202.imageshack.us/img202/1041/retouch6.jpg>school.utexas.edu,. (2014). *Photoshop Basics-- iSchool Tutorials*. Retrieved 2 December 2014, from <https://www.ischool.utexas.edu/technology/tutorials/graphics/photoshop7/>
5. ([Helpx.adobe.com](http://helpx.adobe.com), (2014). *Photoshop Help | Tool galleries*. [online] Available at: <http://helpx.adobe.com/photoshop/using/tools.html> [Accessed 20 Oct. 2014].)
6. (*Profoto.lviv.ua*, (2014). [Online] Available at: <http://profoto.lviv.ua/statja-img/ps/ps-tools/tools.png> [Accessed 20 Oct. 2014].)
7. ([Helpx.adobe.com](http://helpx.adobe.com), (2014). *Photoshop Help | Tool galleries*. [online] Available at: <http://helpx.adobe.com/photoshop/using/tools.html> [Accessed 20 Oct. 2014].)
8. *Topnews.in*, (2014). [online] Available at: <http://topnews.in/usa/files/Face.jpg> [Accessed 21 Oct. 2014].
9. (n.d.). Magazine mode : beauté, people, culture, vie perso, astro, votre magazine mode Glamour. Retrieved from <http://www.glamour.com/images/beauty/2013/05/how-to-hide-undereye-bags-dark-circles-main.jpg>
10. (n.d.). Synergie Skin® Cosmeceutical Skincare & Makeup Manufacturer. Retrieved from <http://www.synergieskin.com/wp-content/uploads/2014/03/peel.jpg>
11. (n.d.). HOME - 10amBeauty. Retrieved from <http://10ambeauty.com/wp-content/uploads/2013/03/NARS-Radiant-Concealer-Review-Profile-Before.jpg>
12. (n.d.). The Shaving Emporium - Male Grooming & Shaving Tips. Retrieved from <http://shavingemporium.co.uk/wp-content/uploads/2014/01/beard.jpg>
13. (n.d.). Polyvore: Discover and Shop the Latest in Fashion, Beauty and Home. Retrieved from <http://www.polyvore.com/cgi/img-thing?.out=jpg&size=l&tid=53564364>
14. (n.d.). Retrieved from <http://flippywall.com/wp-content/uploads/2014/08/Model-Emily-Rudd-Model-Fahsion-Show.jpg>

15. (n.d.). Impress. Retrieved from <http://impressdressdecor.com/wp-content/uploads/2014/04/How-to-Build-a-Modeling-Portfolio-for-Free-31.jpg>
16. (n.d.). AWS | Amazon Simple Storage Service (S3) - Online Cloud Storage for Data & Files. Retrieved from http://s3.amazonaws.com/rapgenius/red-lips_1024x768_29987.jpg
17. (n.d.). Wallpaperciv | Free blog with the best wallpaper HD collections. Retrieved from <http://wallpaperciv.com/wp-content/uploads/2014/06/Nina-Dobrev-Fashion-Model-Pics.jpg>