

LOCATION: 524 W 59TH ST, NEW YORK, NY 10019

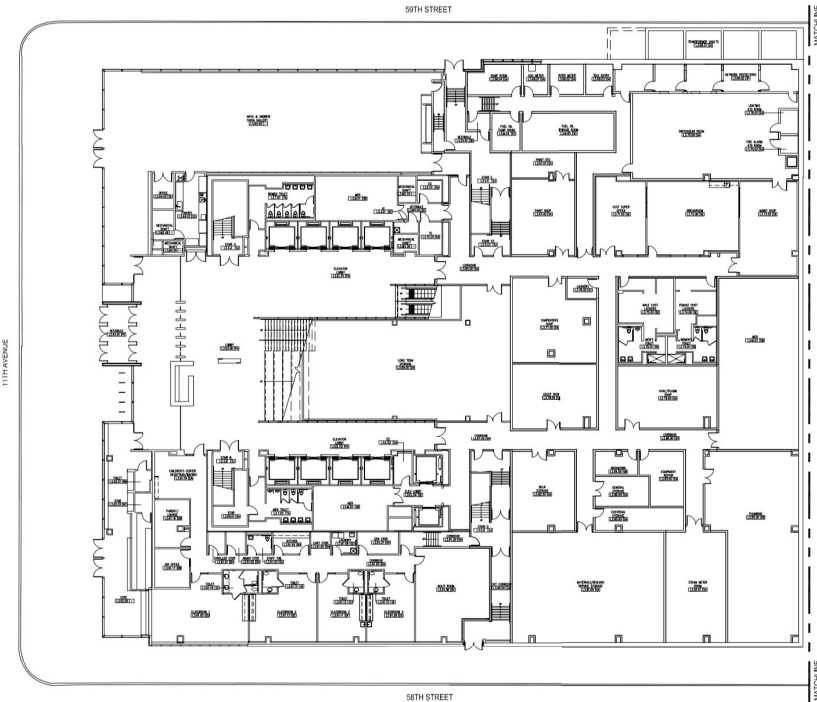
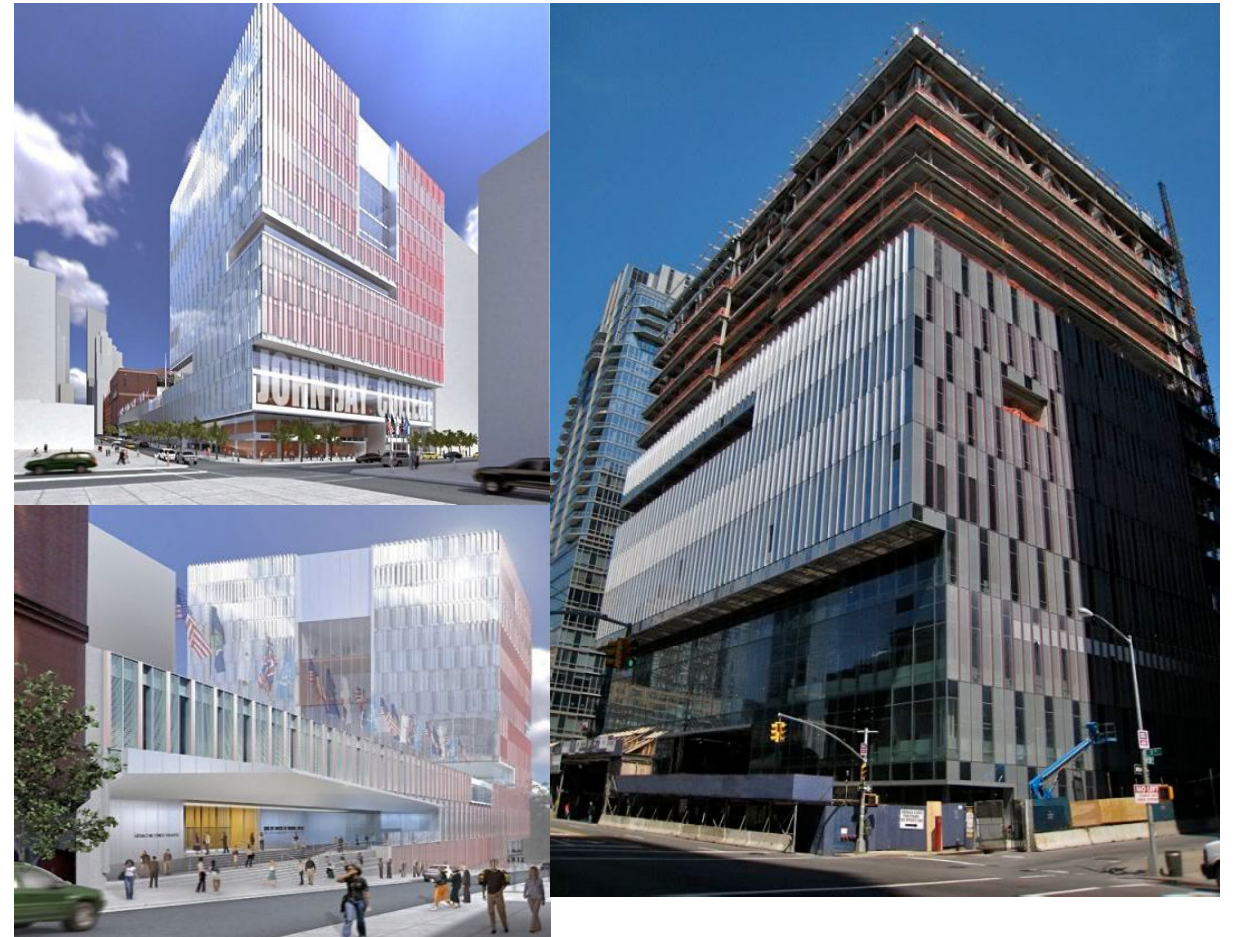
ARCHITECT: SKIDMORE, OWINGS & MERRILL LLP

DATE COMPLETED: 2011

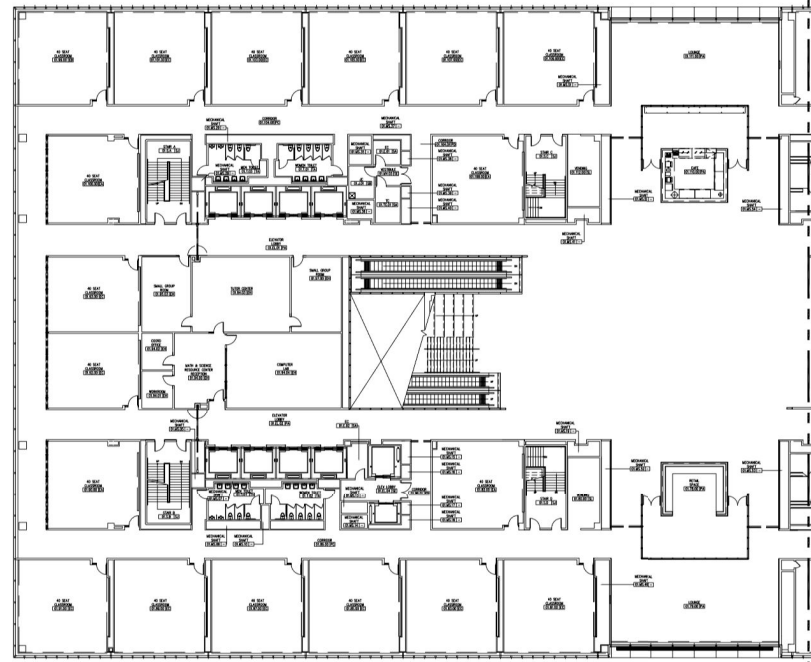
SITE AREA: 100,000 FT<sup>2</sup>

BUILDING HEIGHT: 240 FT

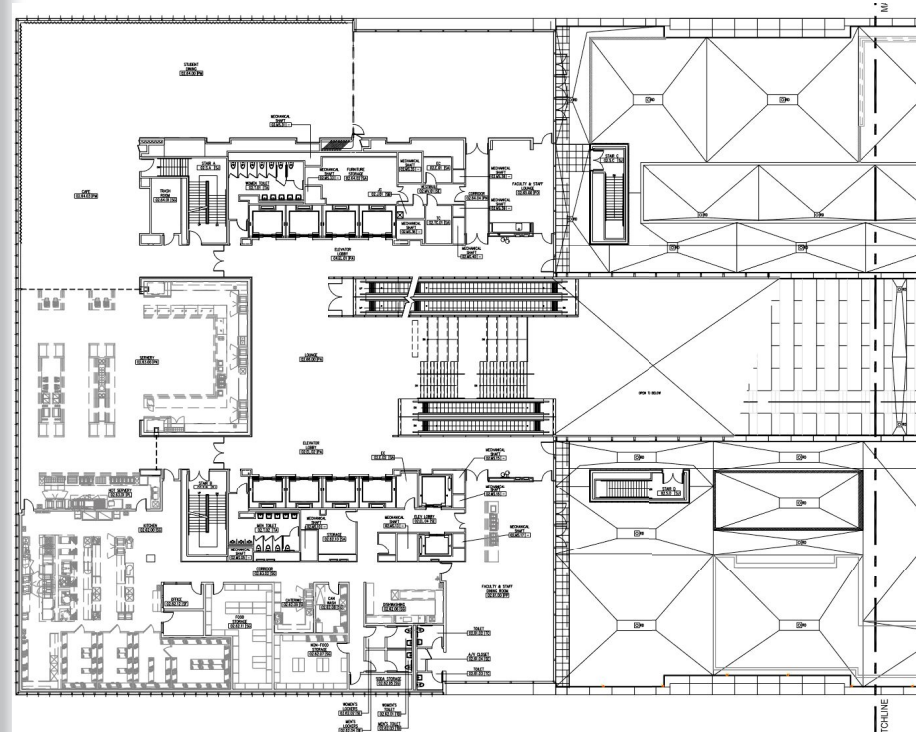
STORIES: 14 STORIES



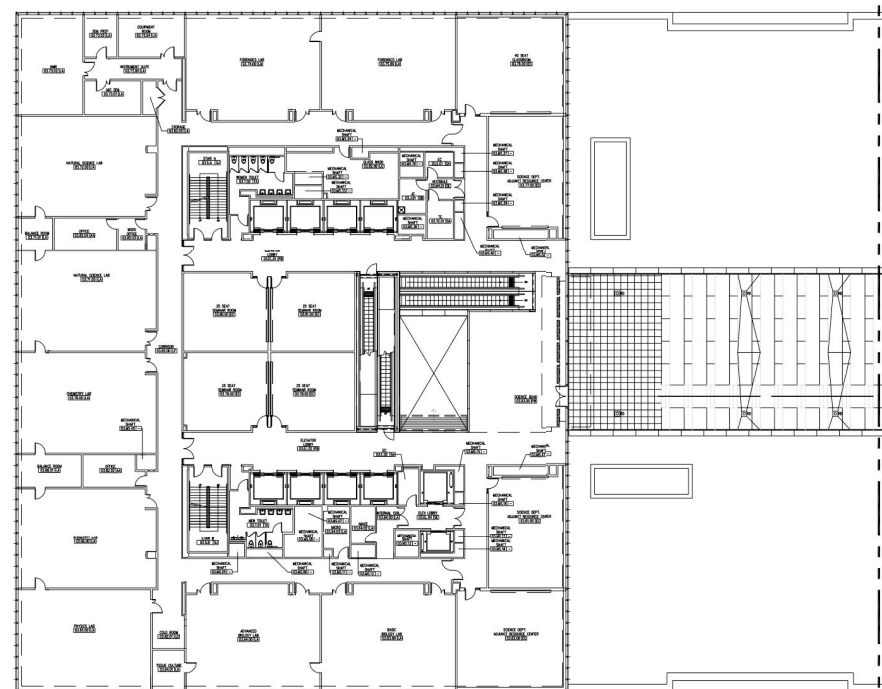
L3



1 ST FLOOR



2ND FLOOR



3RD FLOOR

