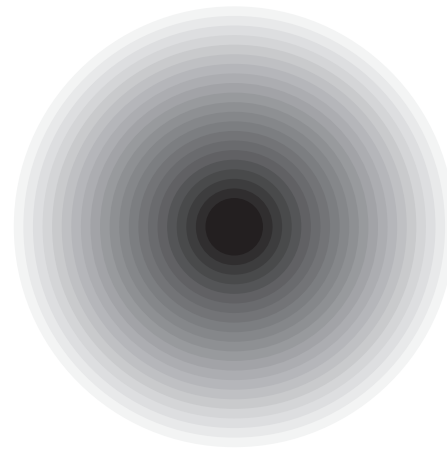
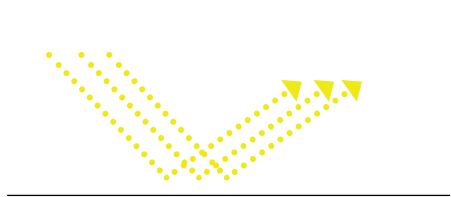


Placement

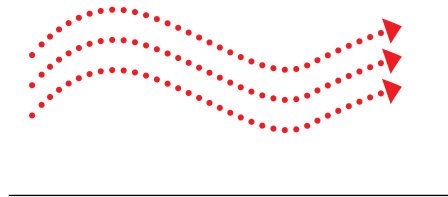
Time, change, and space



Waves



Lighting

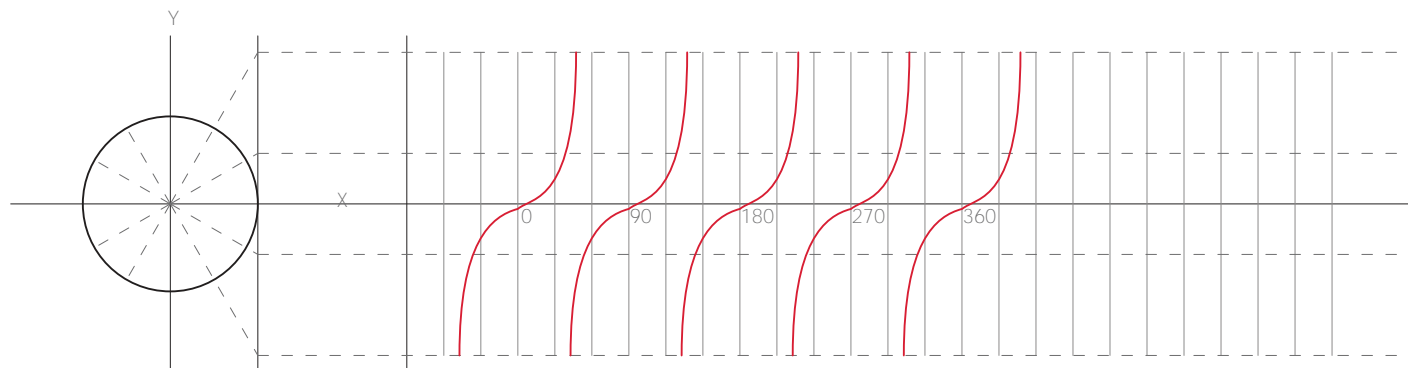
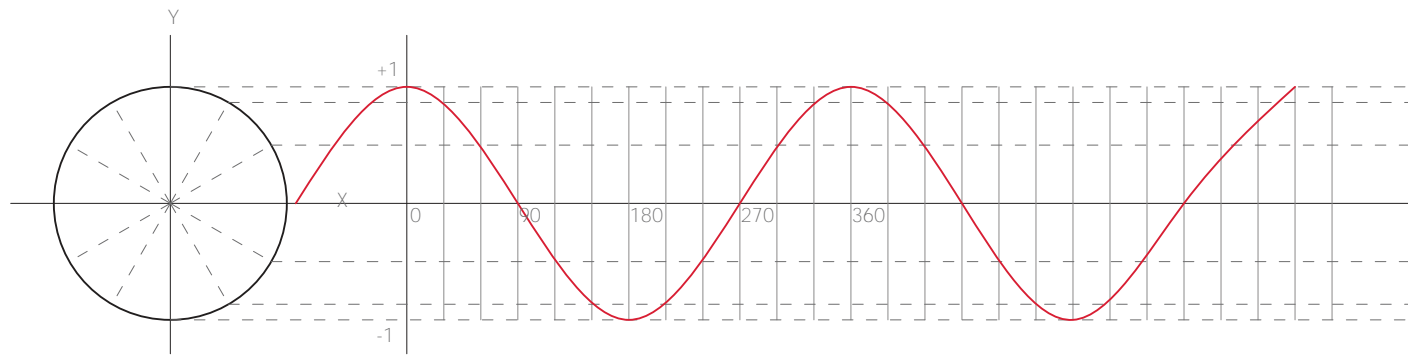
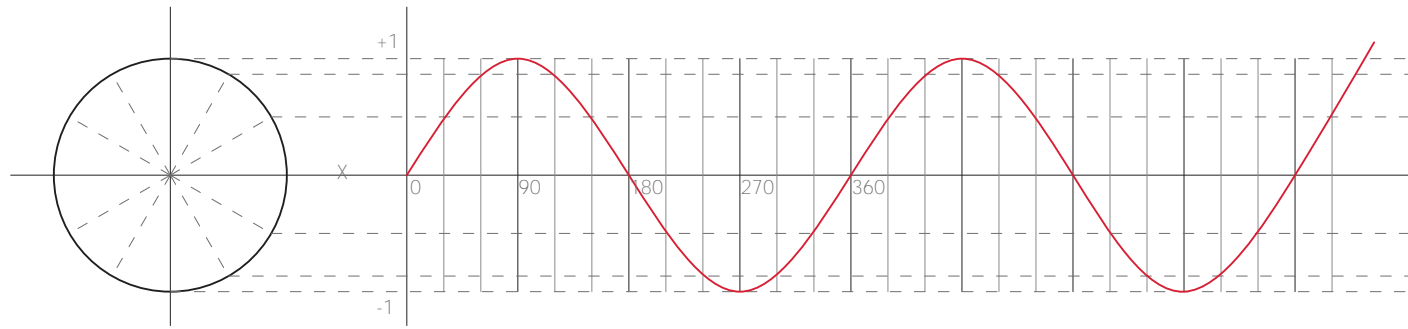


Sound



Vibration

Mathematical graph

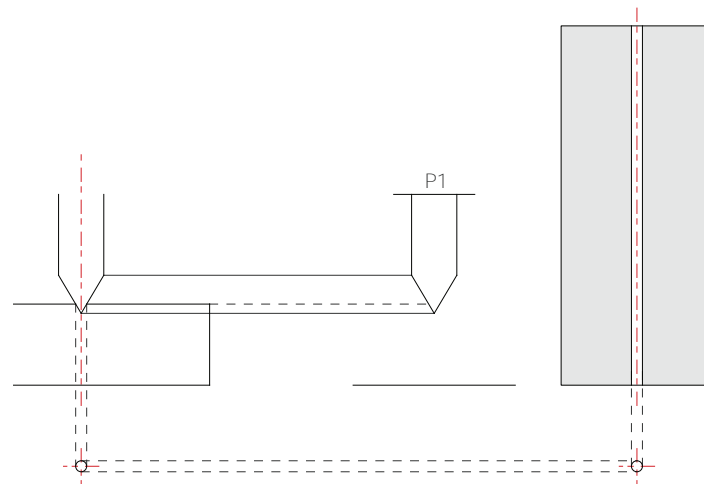
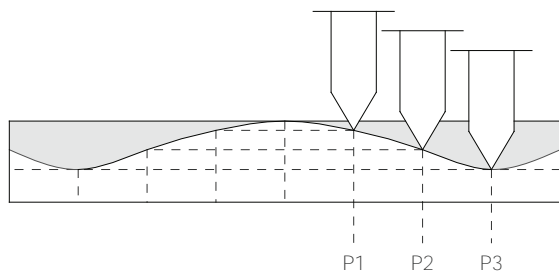


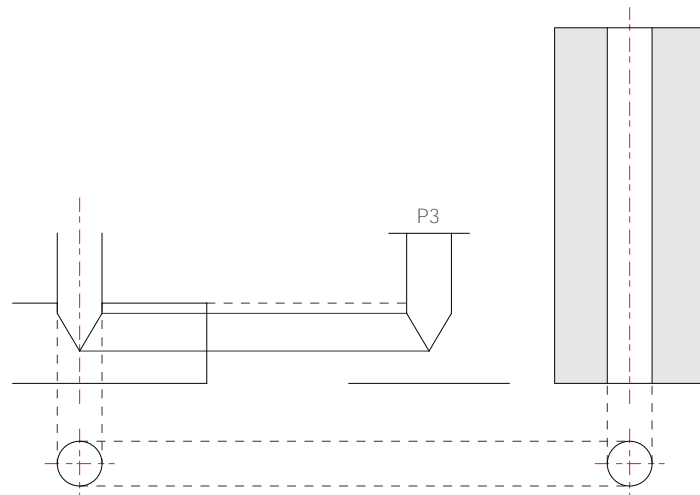
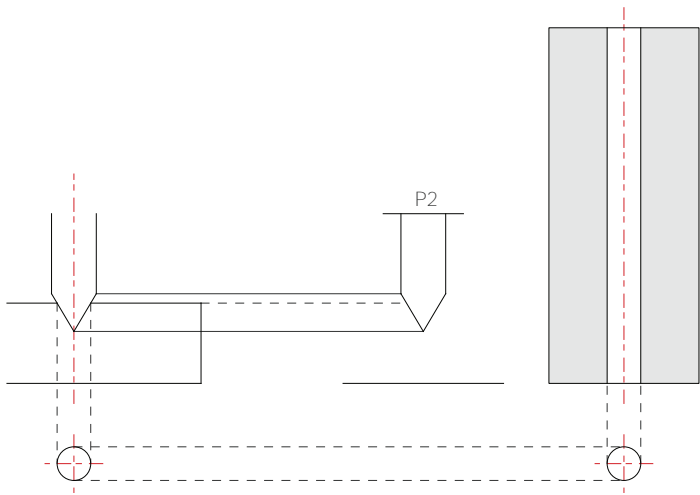
Mathematical graph

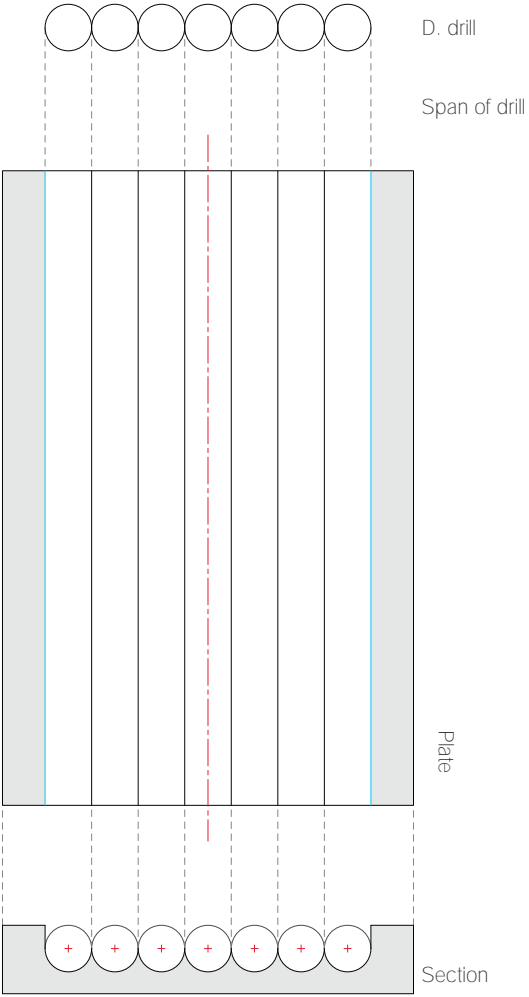
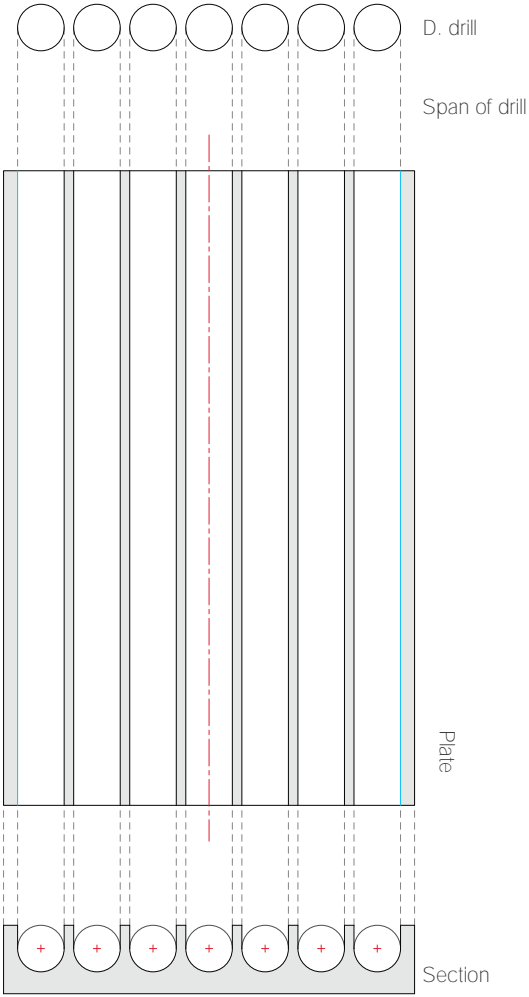
There are a lot of existing curves ubiquitously, which can be visible or invisible.

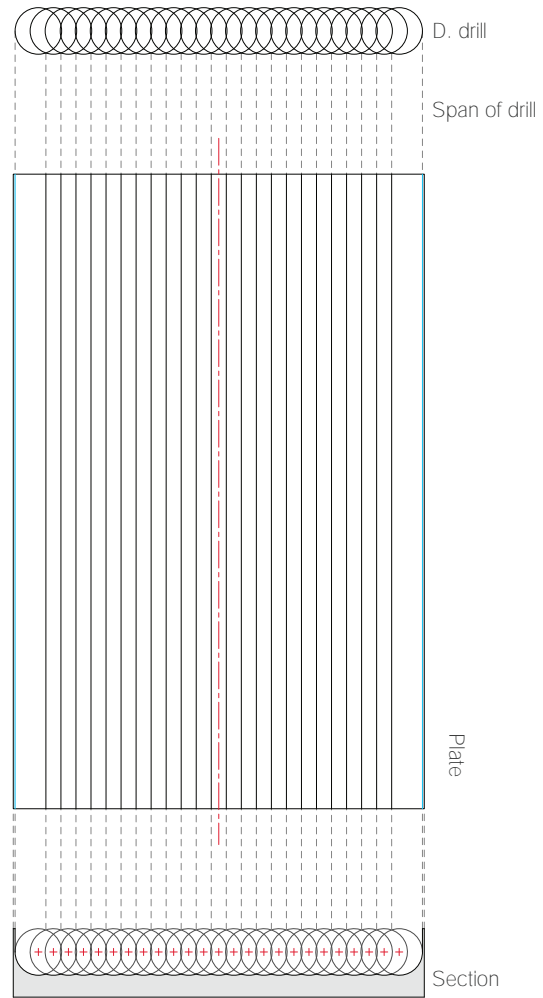
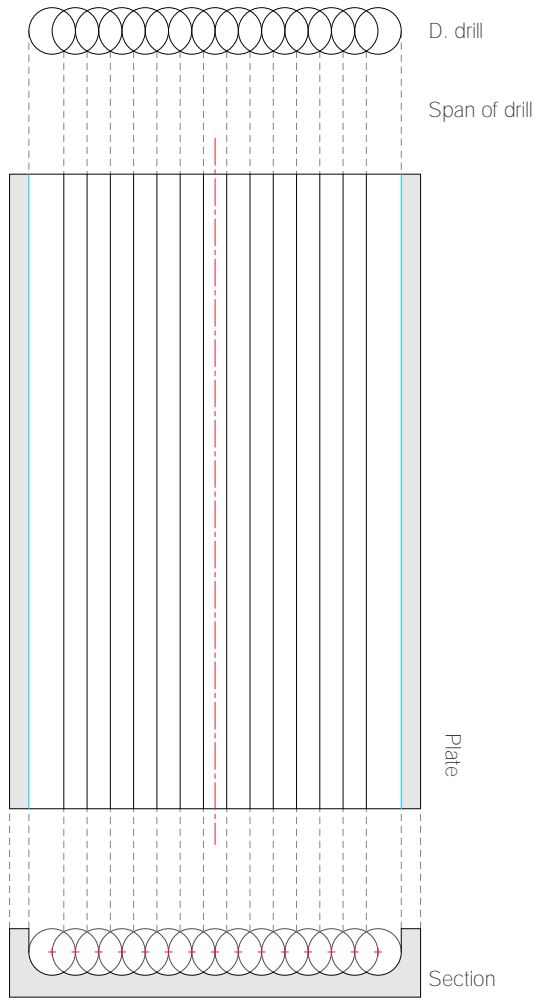
To create these curves in the computer program, creators are required to comprehend a mathematical formula.

Architects who want to deploy their abilities can make fluctuating lines or surfaces by relying on equations, such as sine, co-sine, tangent graphs.



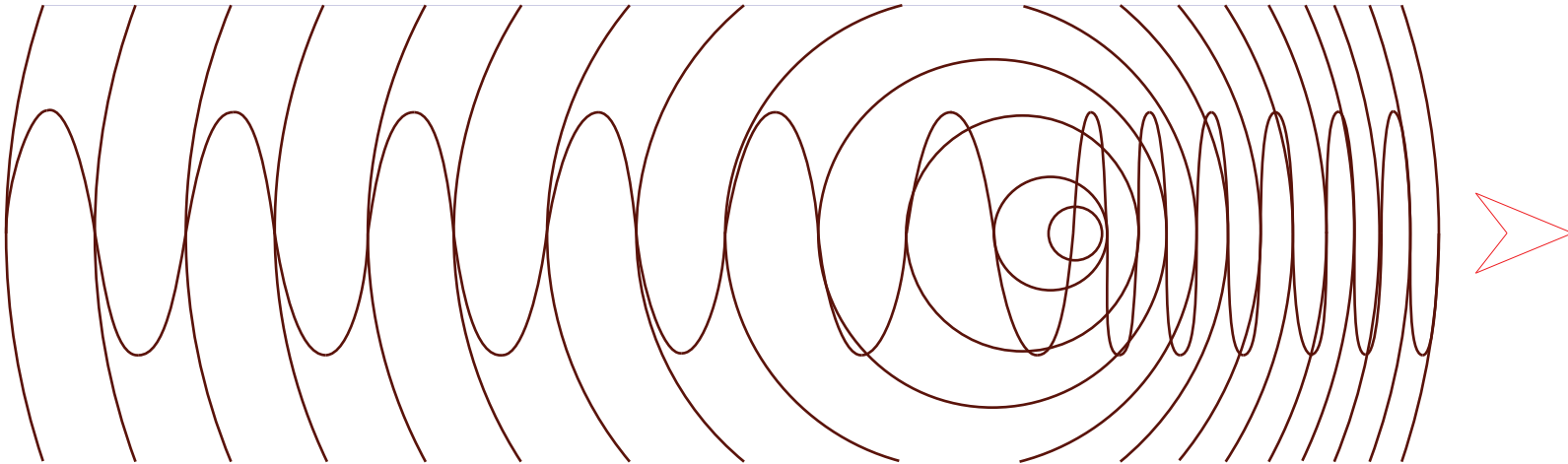


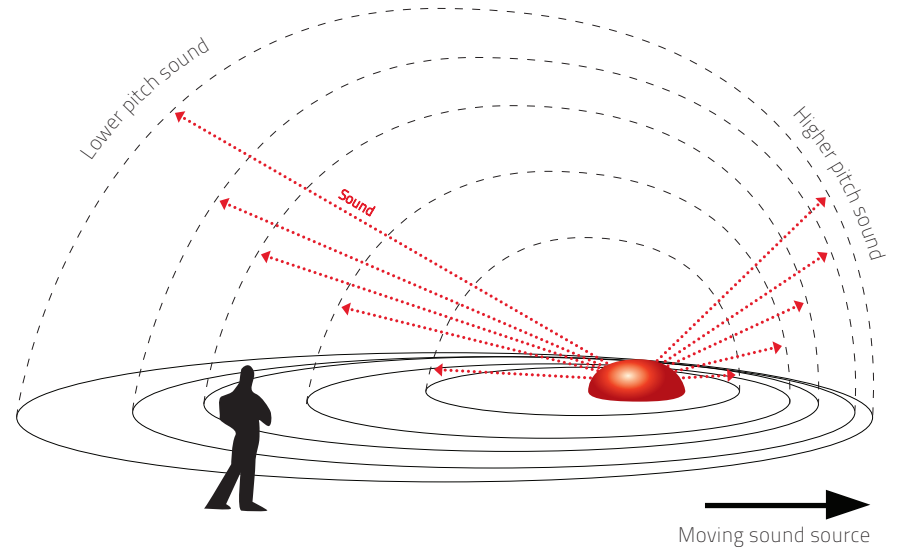
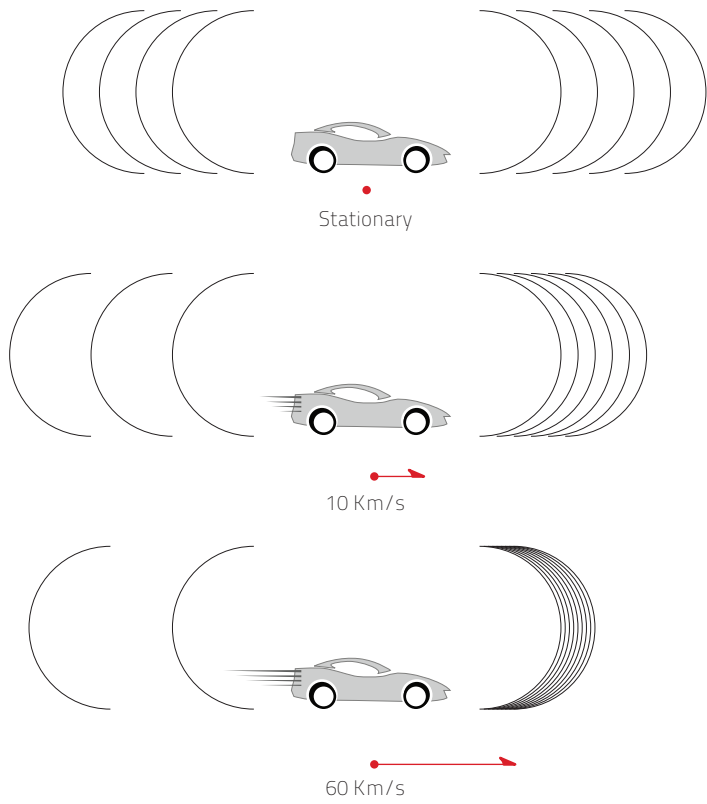


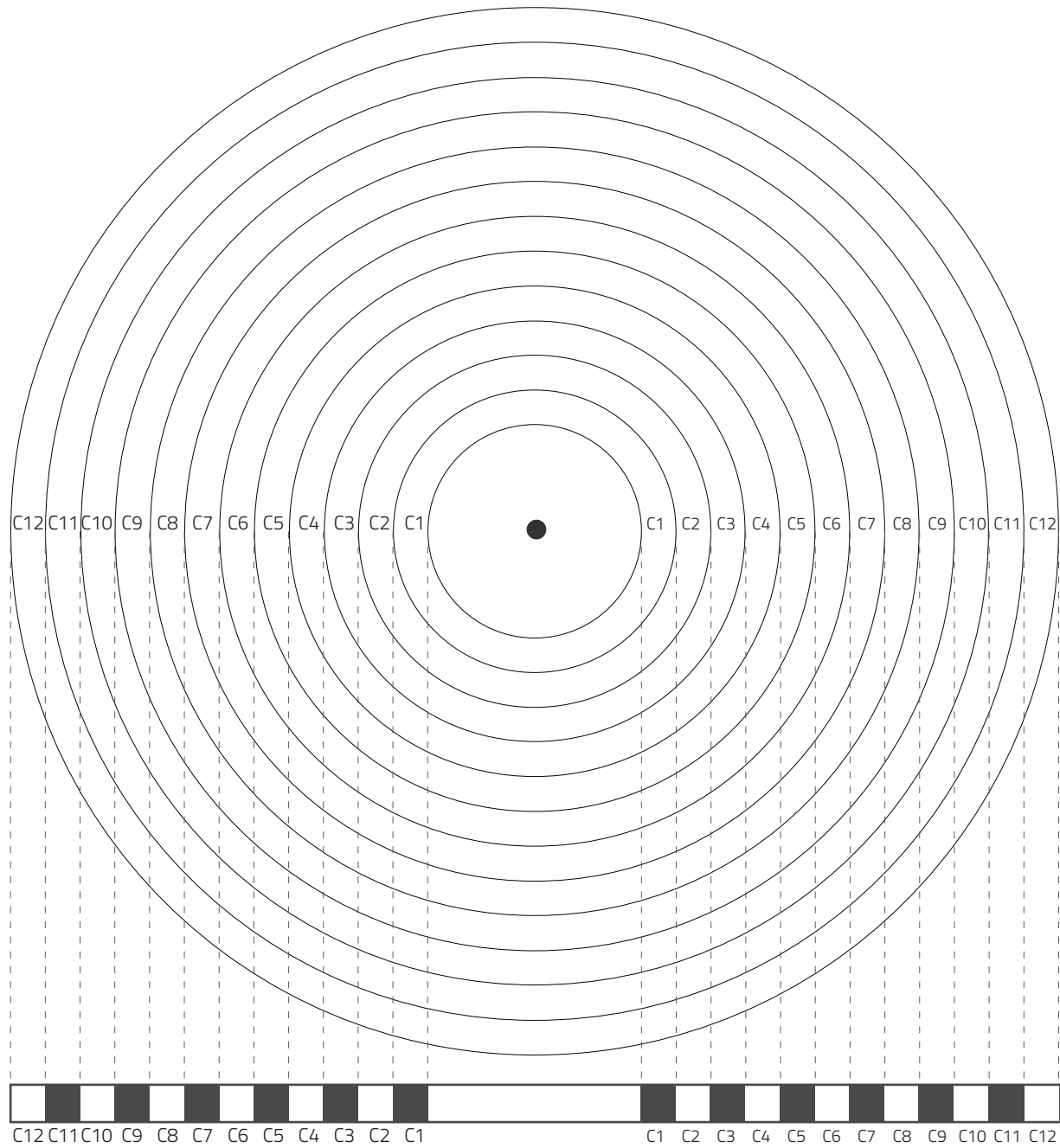


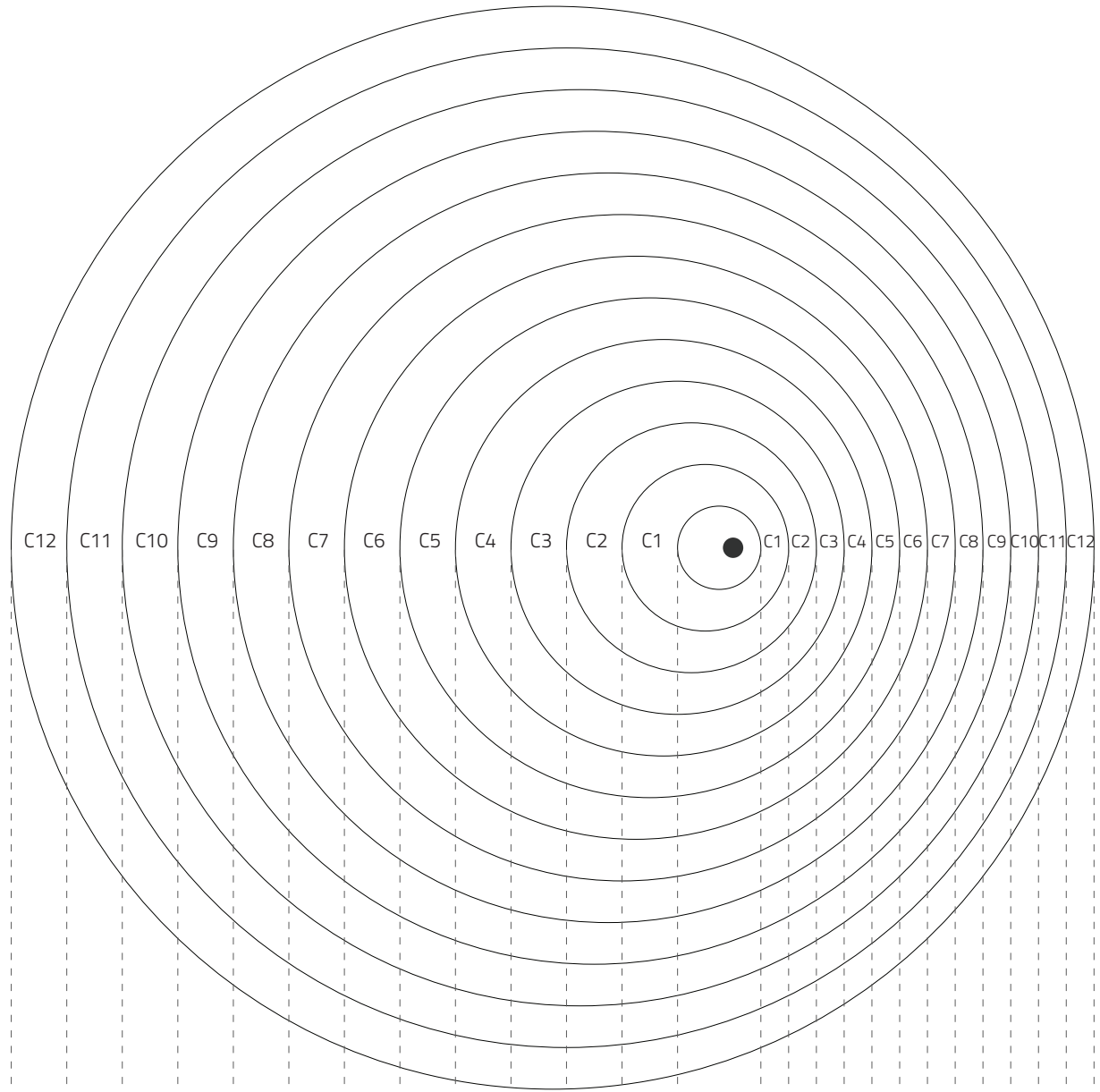
Doppler Effect

Doppler Effect is the change in frequency of a wave (or other periodic event) for an observer moving relative to its source. The received frequency is higher (compared to the emitted frequency) during the approach, it is identical at the instant of passing by, and it is lower during the recession.









C12

C11

C10

C9

C8

C7

C6

C5

C4

C3

C2

C1

C1

C2

C3

C4

C5

C6

C7

C8

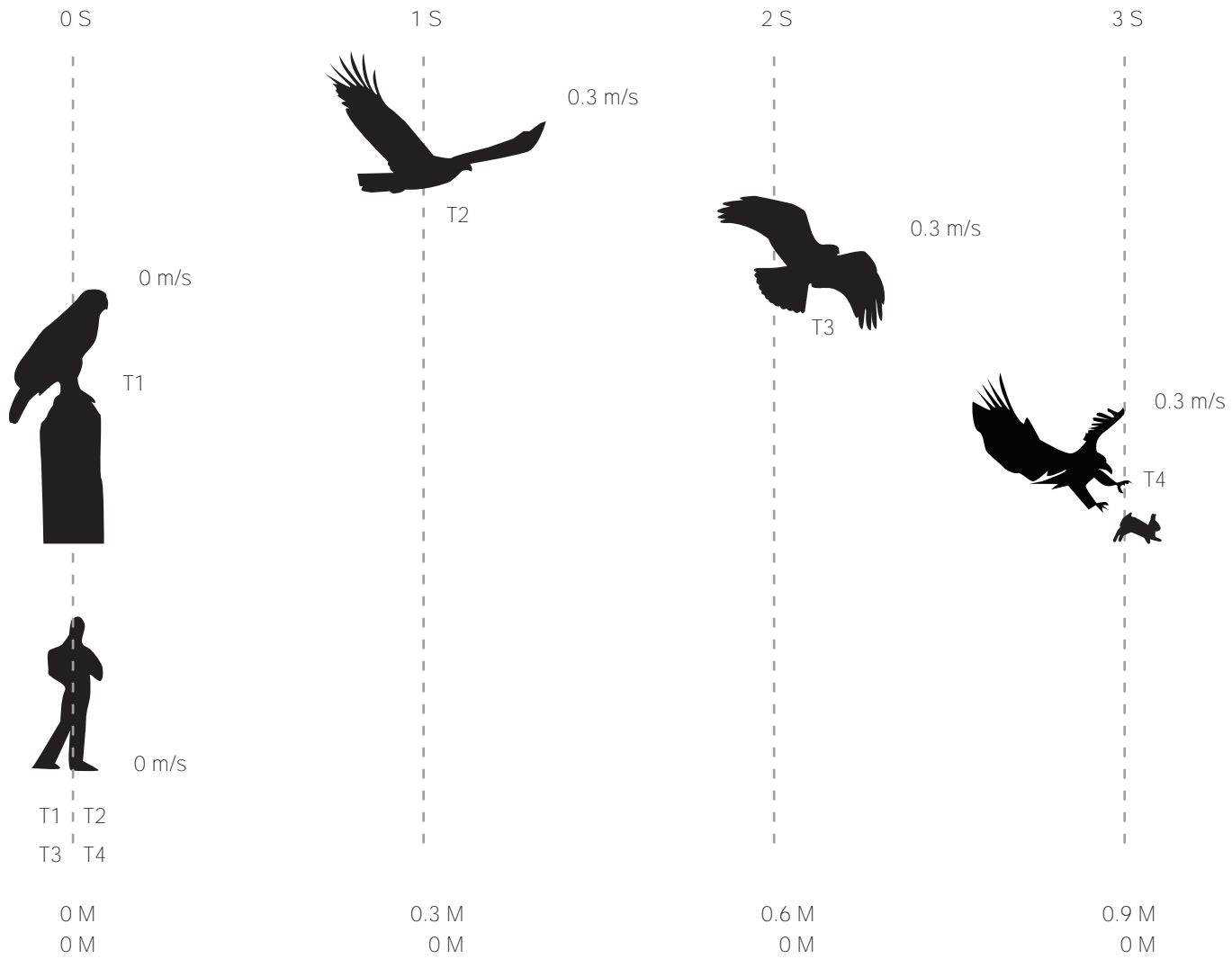
C9

C10

C11

C12

The principle of relativity



Plan

