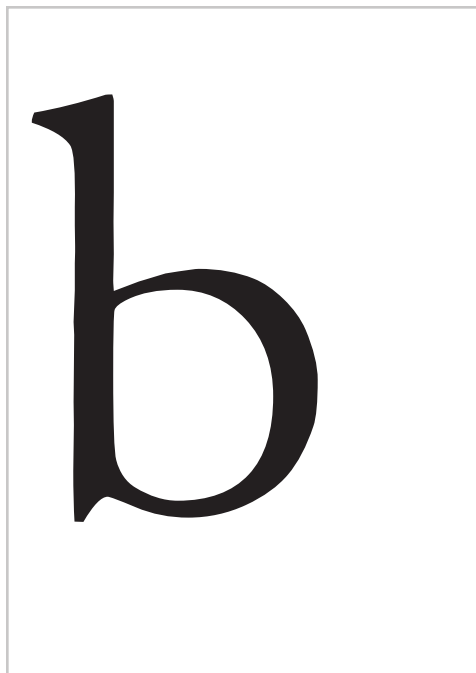
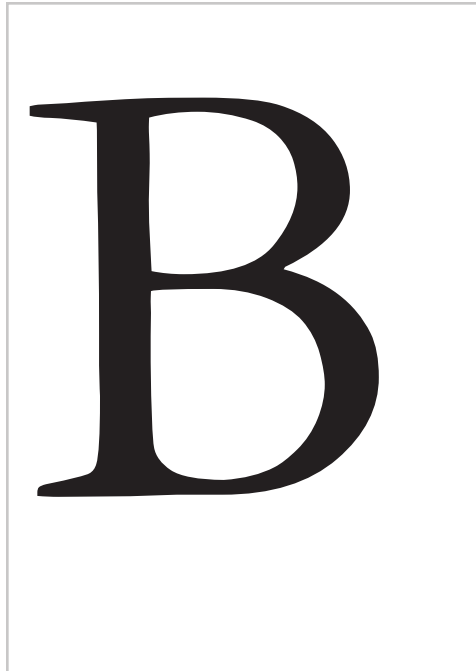


Instructions

Each of the following pages contain a letterform from each of the 5 categories of type styles that we have been discussing in class. Carefully trace each of the letterforms below. Note the varied angles and curves of each letter and what are the elements that define the style. You will need to know each category for our up coming quiz so study the forms carefully. Don't worry if your letters don't look perfect initially. Just like the previous exercise, this one will also help you to fine tune your rendering abilities. Use a pencil or a micron pen and shade-in all letters.

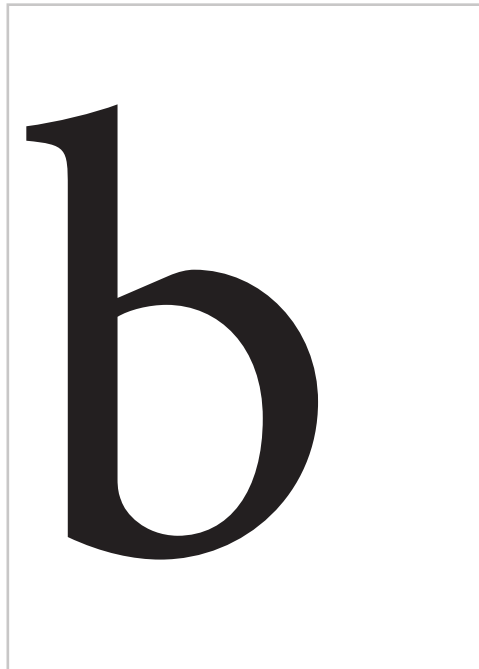
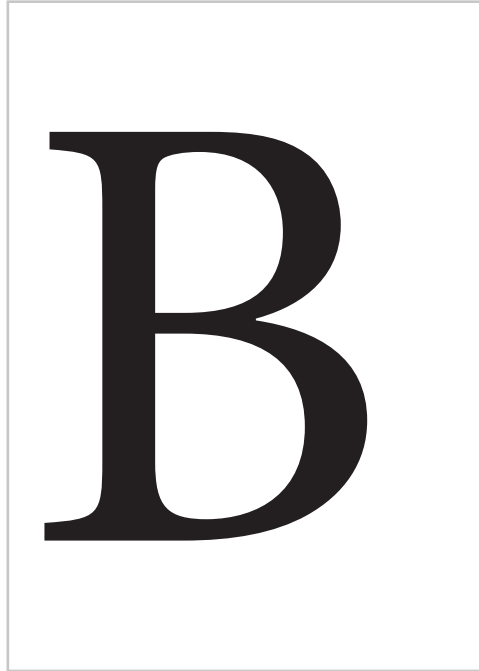
#1. Old Style (1500)

Typeface example: **Garamond**



#2. Transitional (1600)

Typeface example: Baskerville



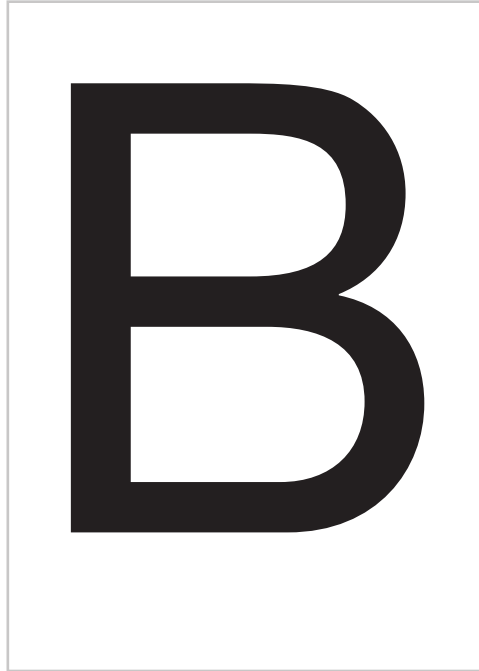
#3. Modern (1800)

Typeface example: **Bodoni**



#4. Gothic (Sans Serif - 1900)

Typeface example: Helvetica



Category #5. Slab Serif (1934)

Typeface example: Rockwell

