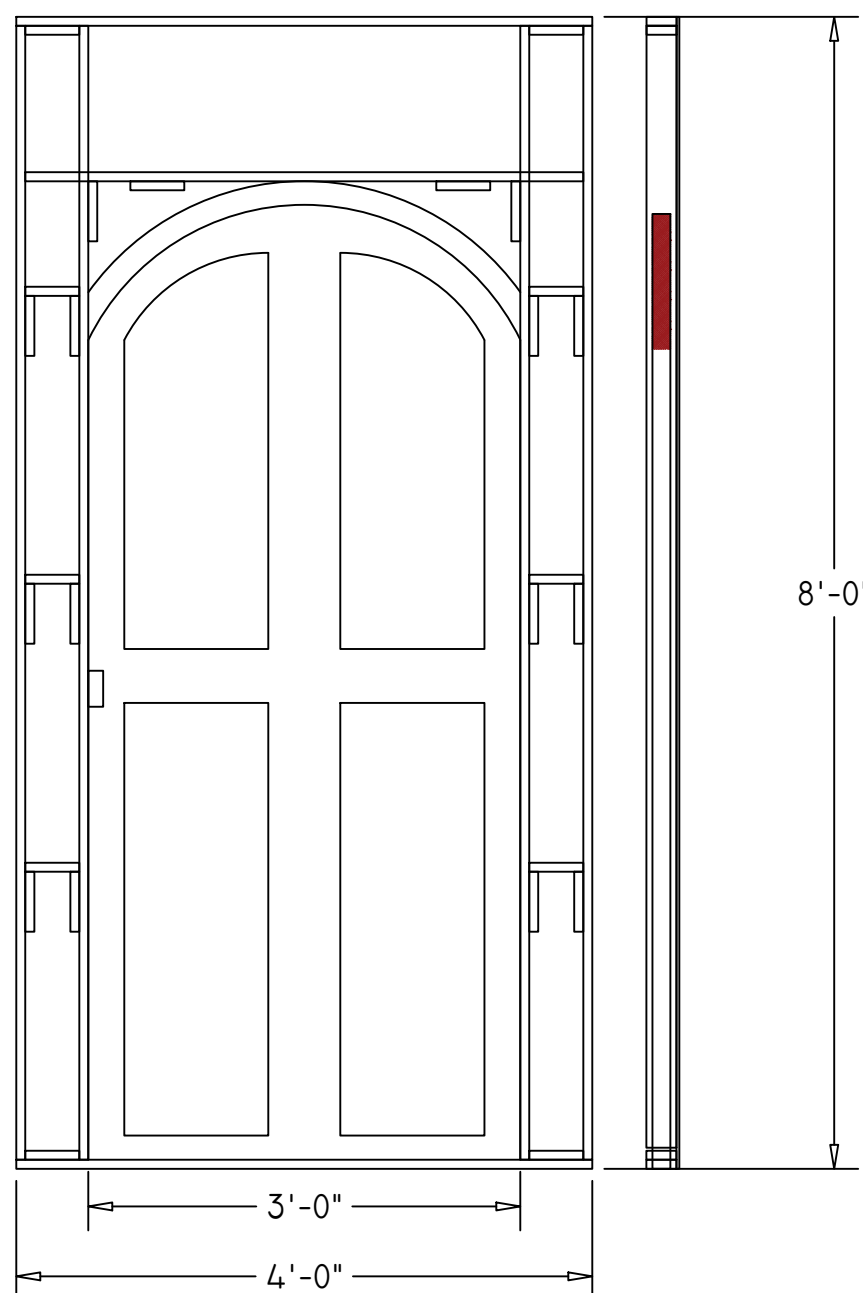


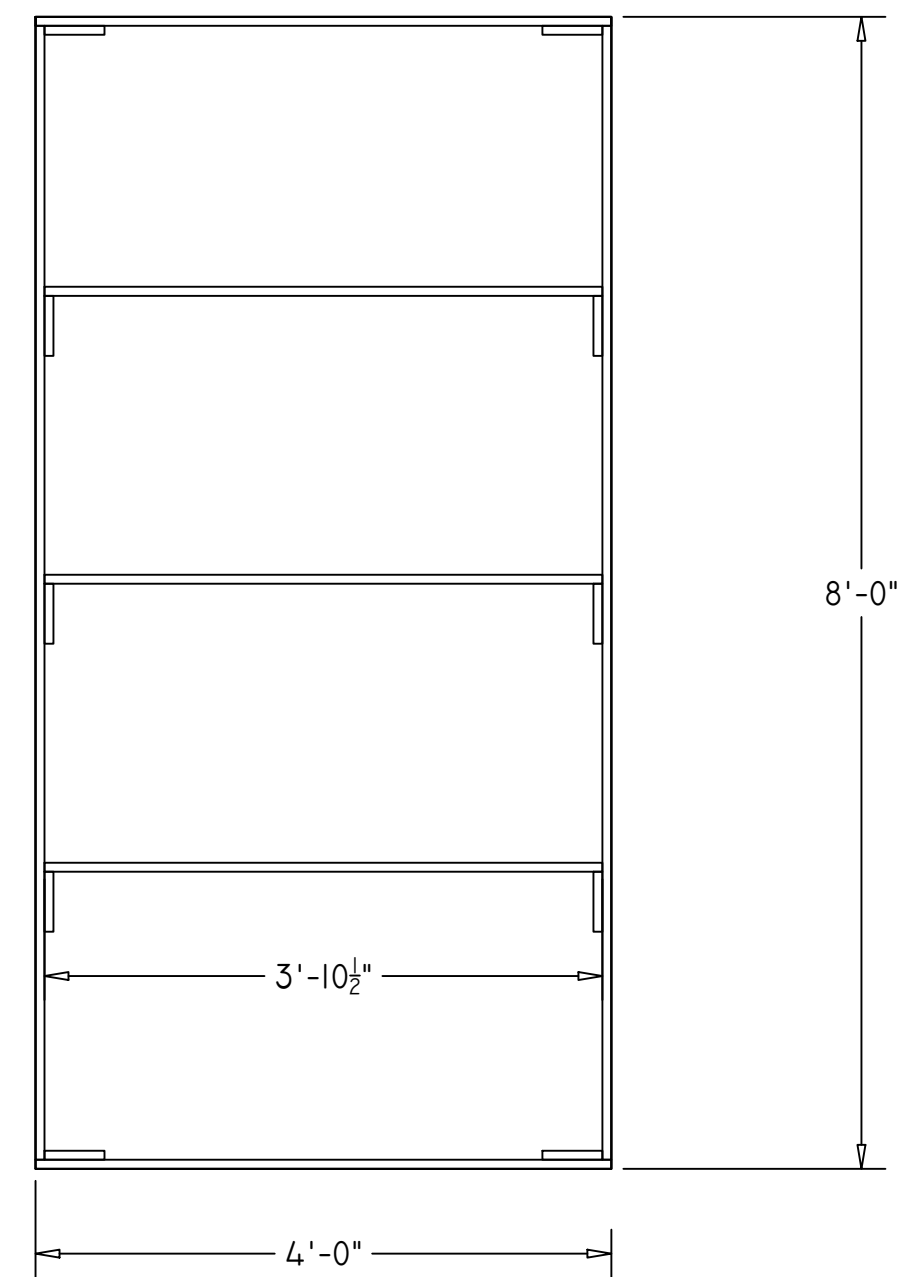
1 Front View
1 Window Flat 3/4"-1'

- CONSTRUCTED WITH 1X3
- TOTAL OF 2 NEEDED
- FASTENED WITH 1" PNEUMATIC STAPLES



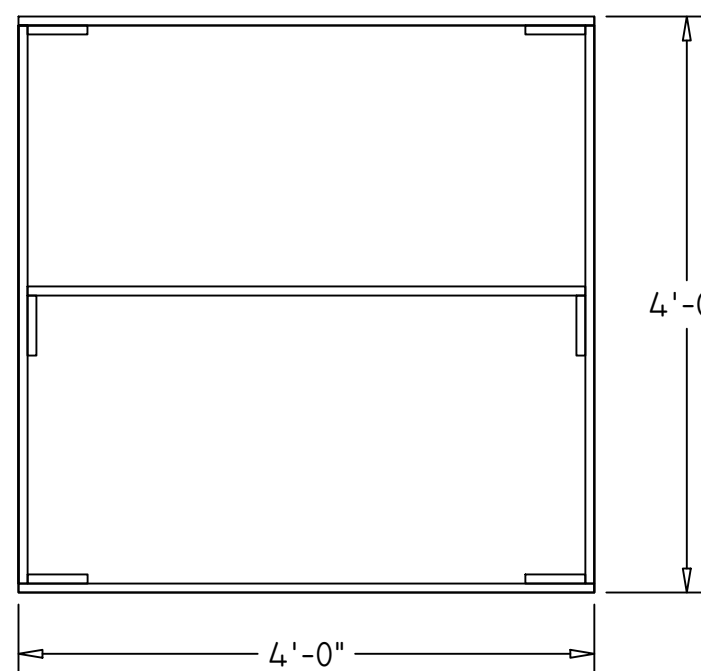
2 Front View
1 Door Flat 3/4"-1'

- CONSTRUCTED WITH 1X3
- TOTAL OF 1 NEEDED
- FASTENED WITH 1" PNEUMATIC STAPLES



3 Front View
1 Standard Flat 3/4"-1'

- STANDARD 4'X8' FLAT
- CONSTRUCTED WITH 1X3
- TOTAL OF 4 NEEDED
- FASTENED WITH 1" PNEUMATIC STAPLES



4 Front View
1 Standard Flat ver B 3/4"-1'

- STANDARD 2'X4' FLAT
- CONSTRUCTED WITH 1X3
- TOTAL OF 1 NEEDED
- FASTENED WITH 1" PNEUMATIC STAPLES

NYC COLLEGE OF TECHNOLOGY	
Culmination Project	
Flats Construction	PLATE NO: 1
PLATE # 1	
SCALE: 3/4"=1'	
DATE: 11/5/2021	
DRAFTER: HENRY CRUZ	OF: 1