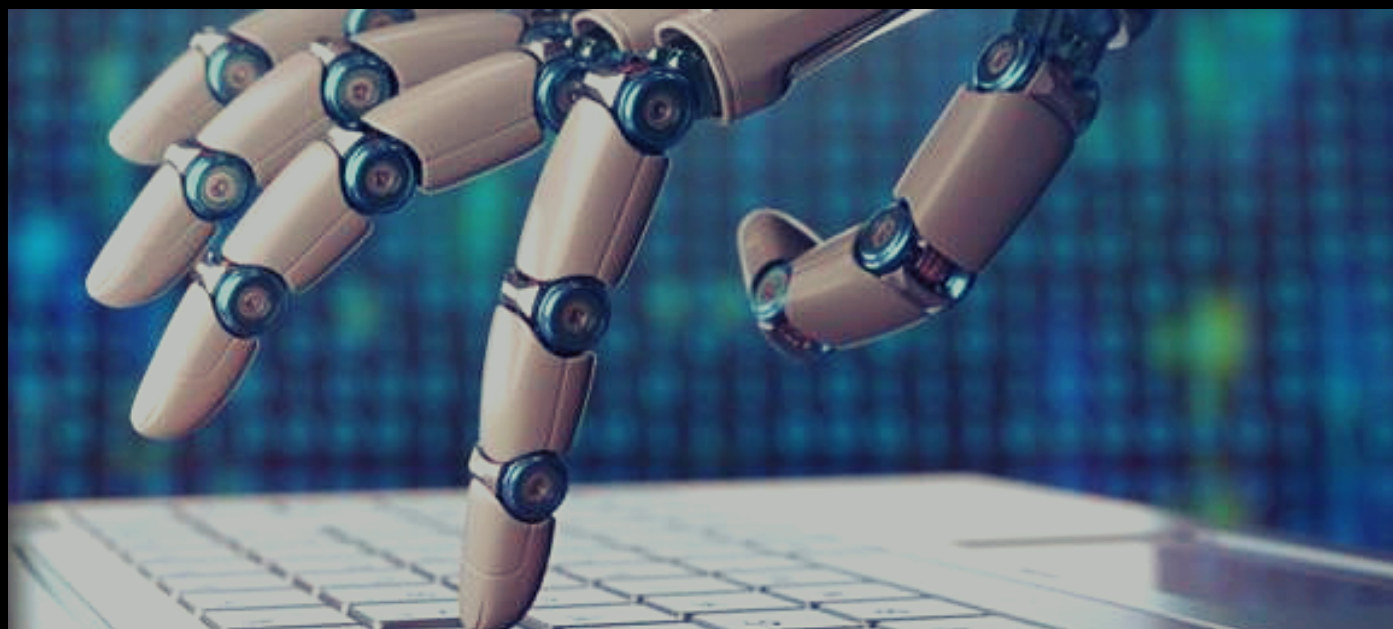


HALL 1101: LANGUAGE AND IDENTITY



DR. CARRIE HALL

Office: Namm 525

chall@citytech.cuny.edu

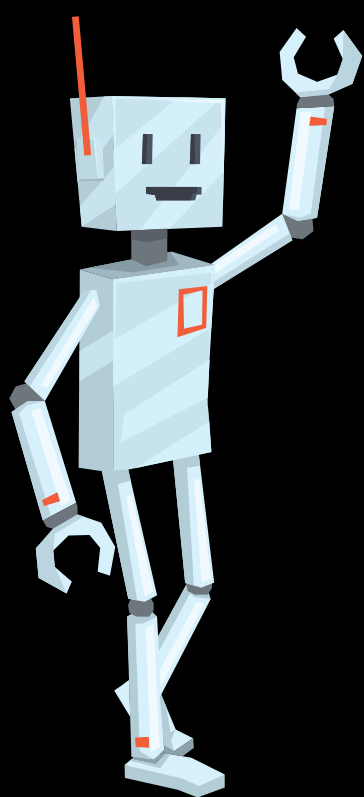
<https://openlab.citytech.cuny.edu/hall1101spring2019>

1101-355

Namm 1018 T/Th 11:30-12:45

Conference hour T 1:00-1:50

**OFFICE HOURS: Thursdays 10:15-11:15
or by appointment**



WELCOME!

HELLO AND WELCOME TO 1101. THIS CLASS IS HERE TO HELP YOU FIGURE OUT WHAT LANGUAGE IS "BEST FOR THE JOB," WHATEVER THE JOB YOU'RE TRYING TO DO MIGHT BE. WITH THIS IN MIND, WE'RE GOING TO LOOK AT THE KIND OF LANGUAGE YOU USE IN YOUR OUT-OF-SCHOOL LIVES, THE KIND OF LANGUAGE YOU USE IN YOUR FIELDS, AND THE KIND OF LANGUAGE THAT GETS USED IN ACADEMIA AND HOW DECISIONS ABOUT LANGUAGE GET MADE.

WE'RE GOING TO DO RESEARCH ABOUT THE WORLD OUTSIDE OURSELVES AND WRITE ABOUT THE WORLD INSIDE OURSELVES, AND WE'RE GOING TO LEARN ABOUT EACH OTHER.

MAJOR ASSIGNMENTS

In this class, you'll write FOUR take-home papers and write TWO revisions. You will also take a final. These are ALL REQUIRED! This means if you do not turn ALL these papers in, you will fail the class.

They also must be turned in on-time! Papers will be marked down 1/3 of a letter grade (A- to B+, C to a C-) for each day they are late for the first three days. After that, they will be marked down a FULL letter grade. This means that papers over six days late will fail.

There is an exception! If you need an extension on a paper and you speak to me BEFORE it's due, I am likely to give it to you. Please note that "speak to me" actually means that you hear back from me. That is, emailing me the night before something is due and not receiving a response is NOT speaking to me.

Please note! You will also have homework for this class, which is all in preparation for the next day's class and is always to help you get ready for your upcoming papers. For this reason, I do not accept late homework!

Your homework will be posted on the OpenLab course website (discussed below.) Homework assignments are not graded individually, but they are factored into the grades for each unit.

