

COMMERCIAL PRECEDENT STUDIES



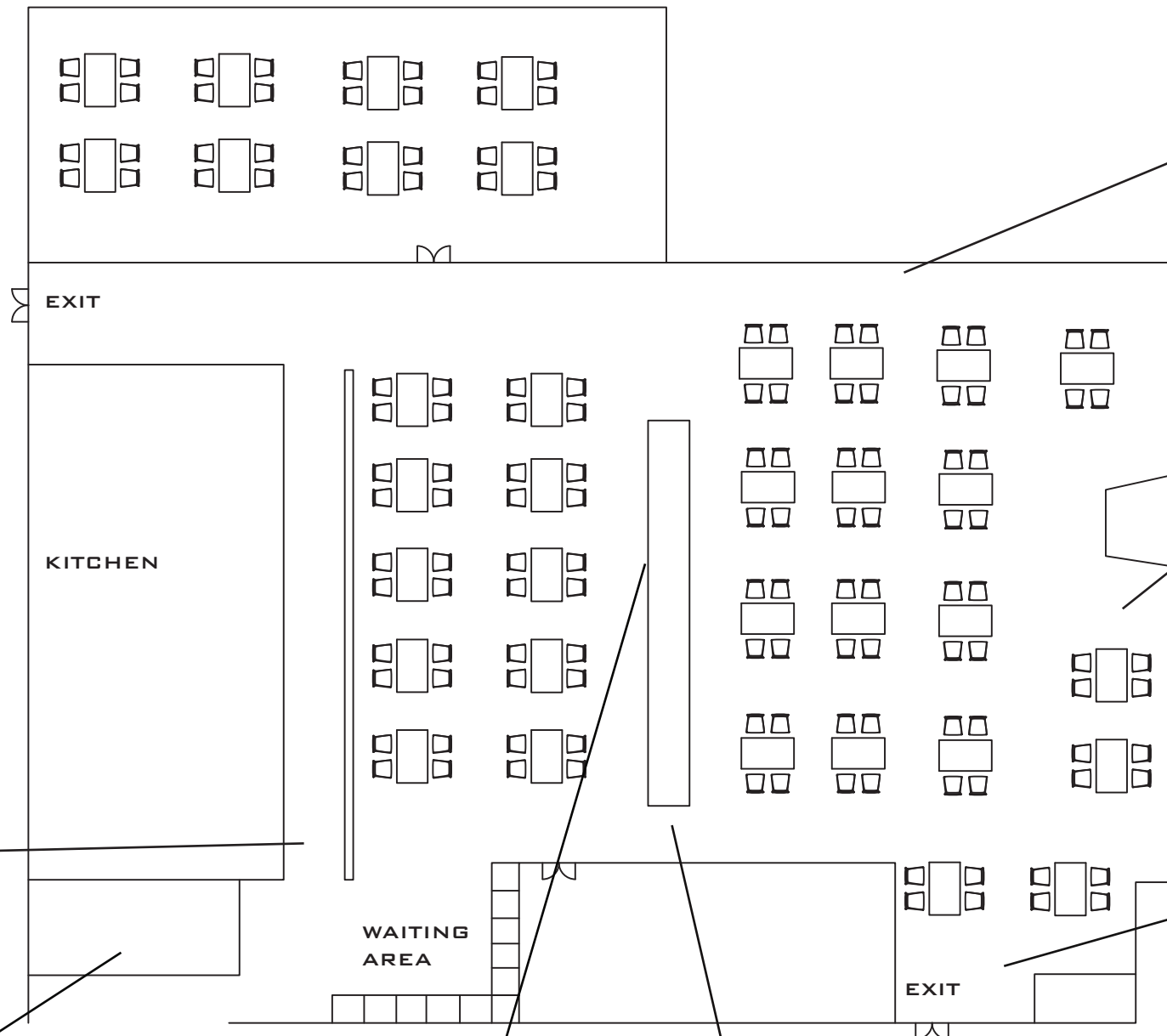
PROGRAM: HOT POT

NAME: JPOT

LOCATION: 10 TAMPINES CENTRAL 1, TAMPINES 1 #03-16, SINGAPORE 529536

COLORS OF LOGO: BLACK, RED, WHITE, ORANGE

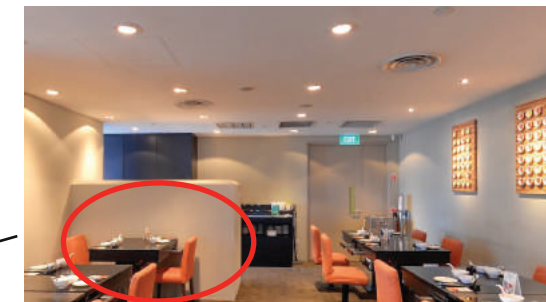
SCALE: 10 FT HEIGHT



LIGHT



INTERIOR DETAIL



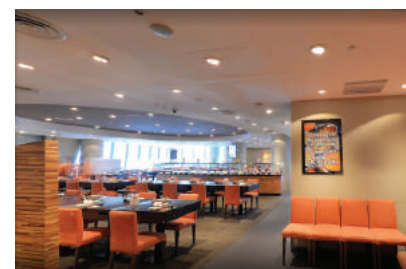
PRIVATE SPACE



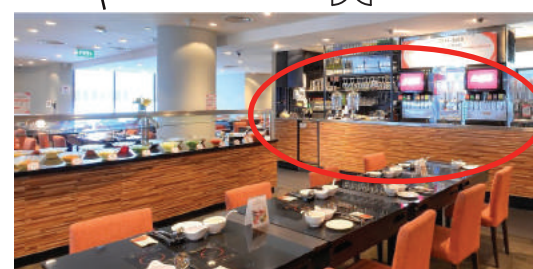
PRIVATE SPACE



RECEPTION



LIGHTING



DRINK COUNTER



PUBLIC SPACE



PROGRAM: KARAOKE BAR LOUNGE

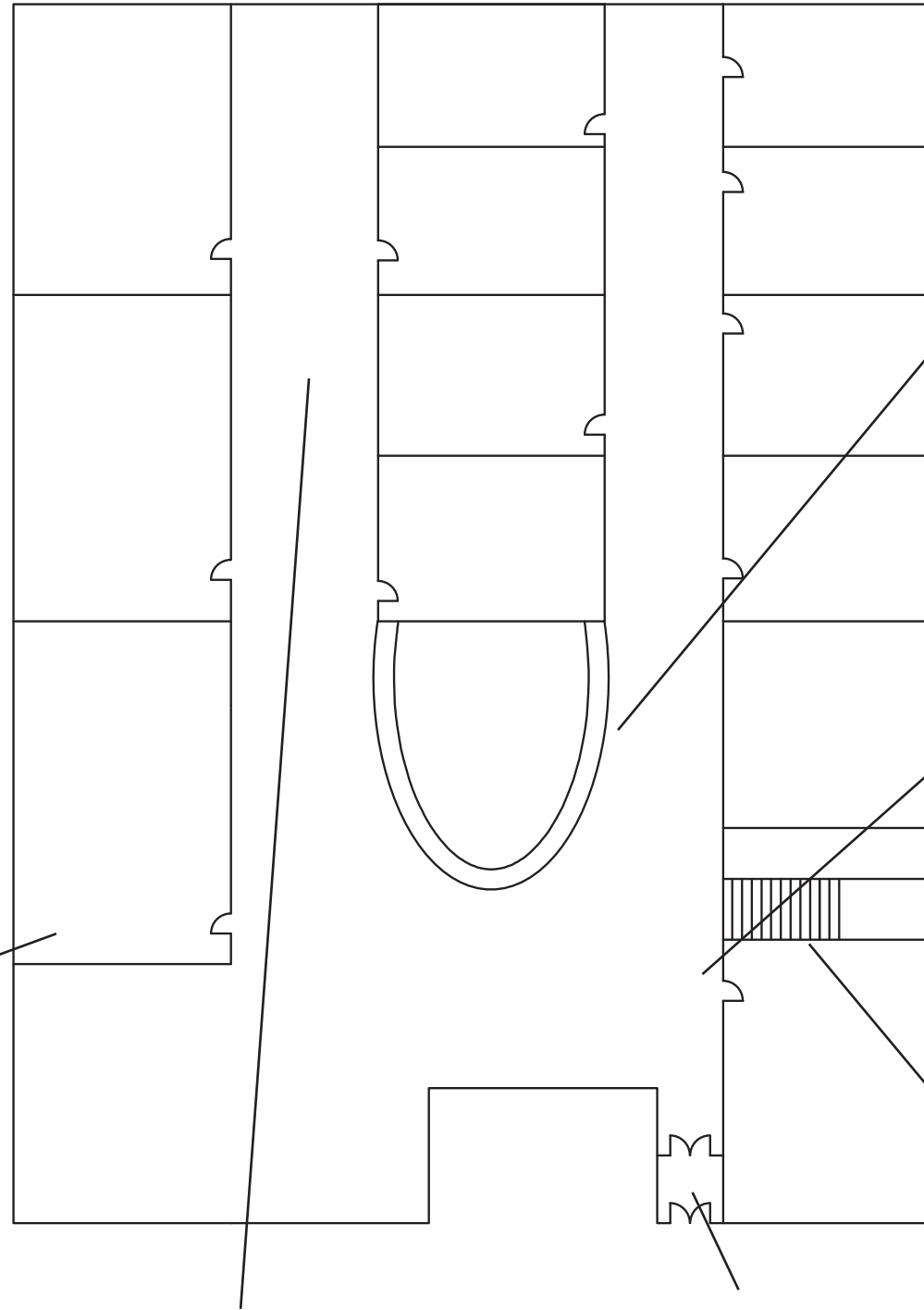
NAME: 100 FUN

LOCATION: 932 60TH ST, BROOKLYN,
NY 11219

COLORS OF LOGO:
WHITE,RED,BLACK,BLUE,GREEN

SCALE: 10 FT HEIGHT

HIERACHY: LOUNGE WITH THEME,
BARBECUE SERVICE



BAR COUNTER



LOUNGE



PRIVATE SPACE



VIP LOUNGE



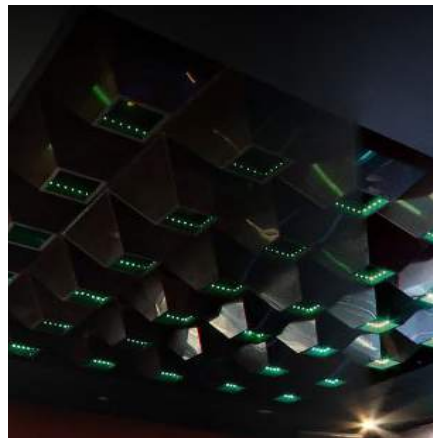
LOUNGE WITH HELLO KITTY



STAIRS TO



INTERIOR DETAILS



ARTIFICIAL LIGHTING



CORRIDOR



ENTRANCE

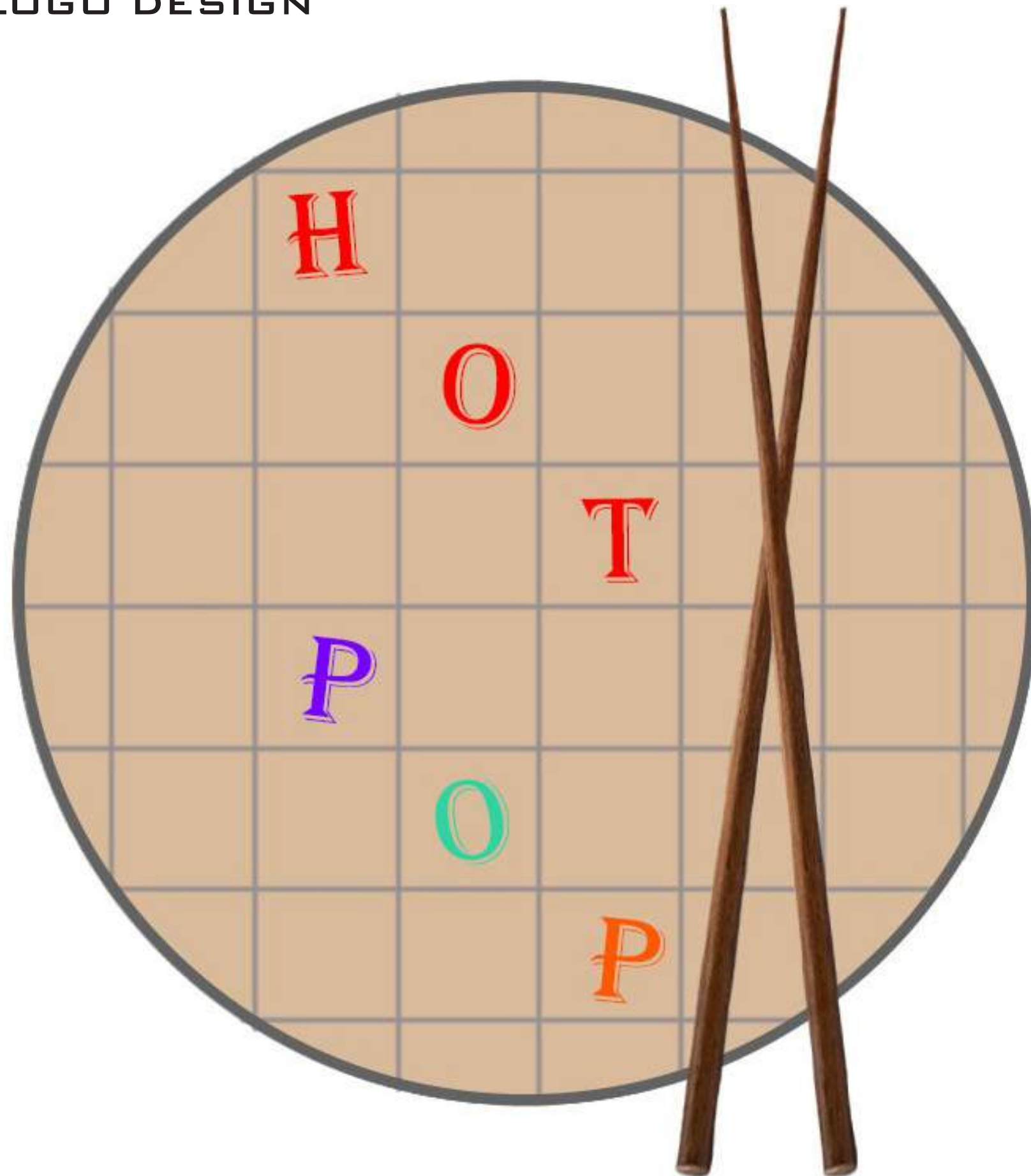


INTERIOR DETAILS



OUTSIDE (GLASS HOUSE)

LOGO DESIGN



KC HOT POP



HOT POT



BARBECUE

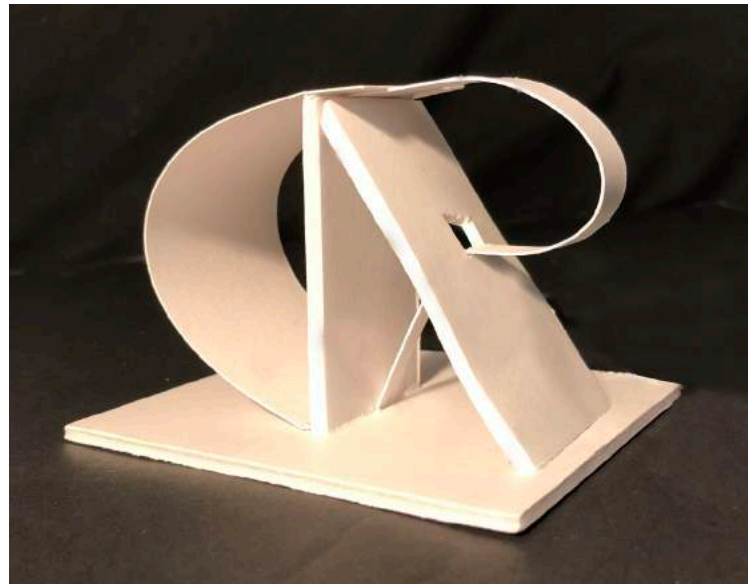
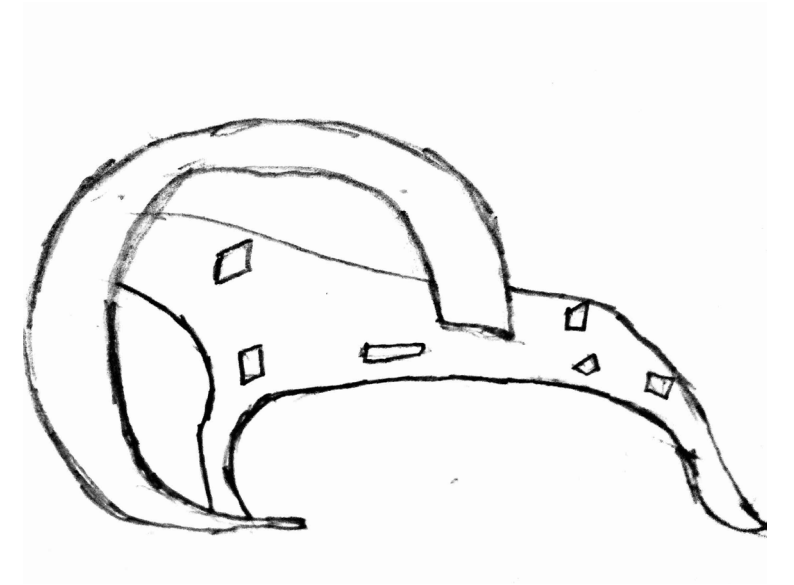
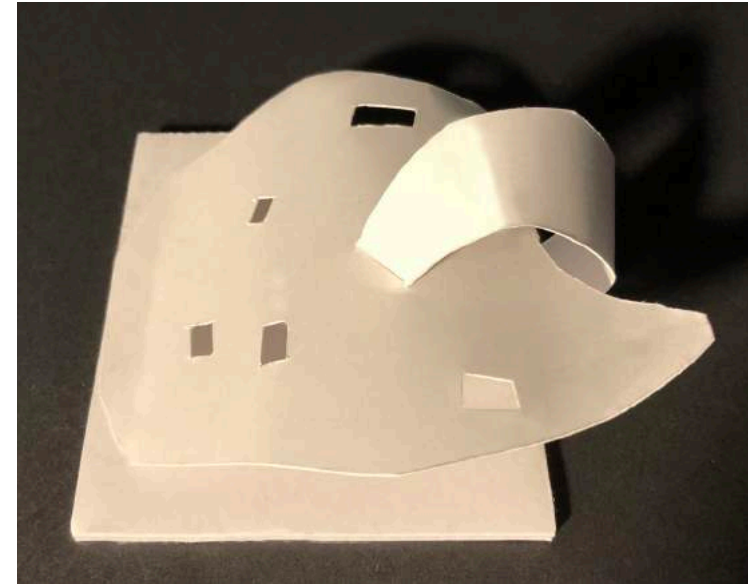
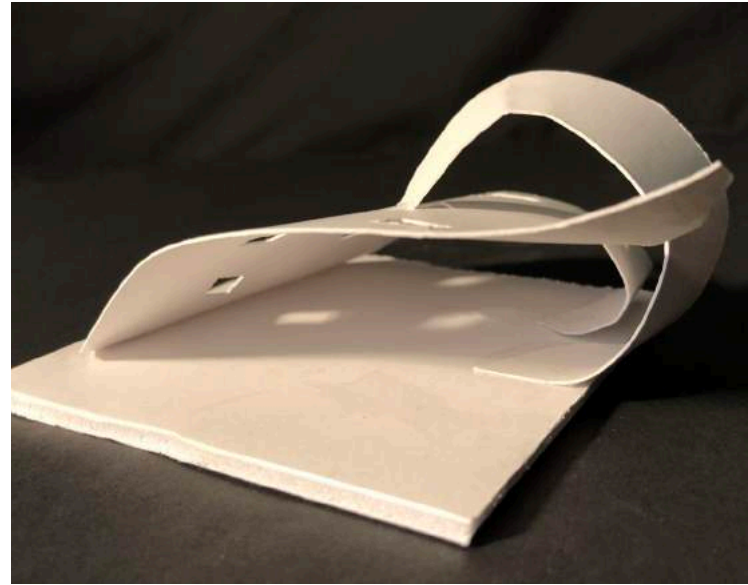


KARAOKE

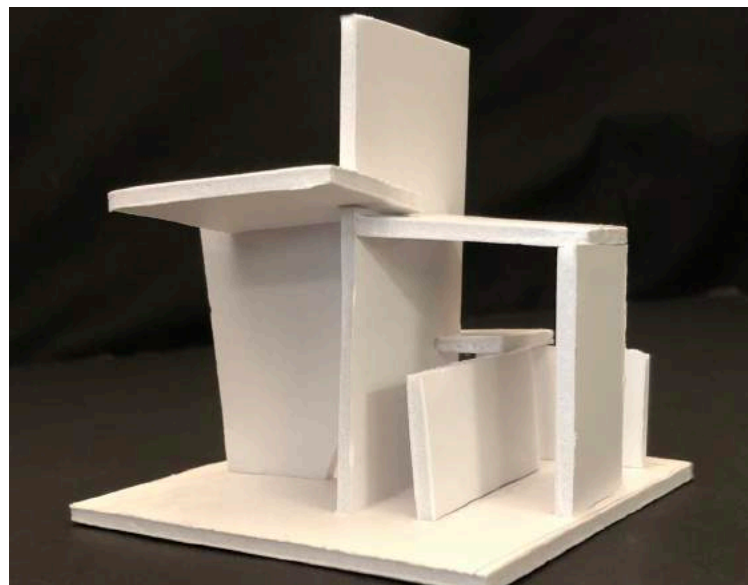
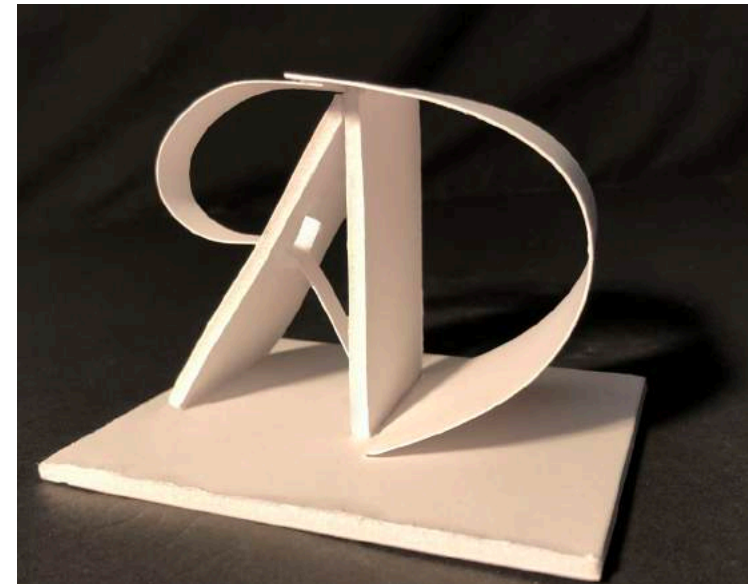
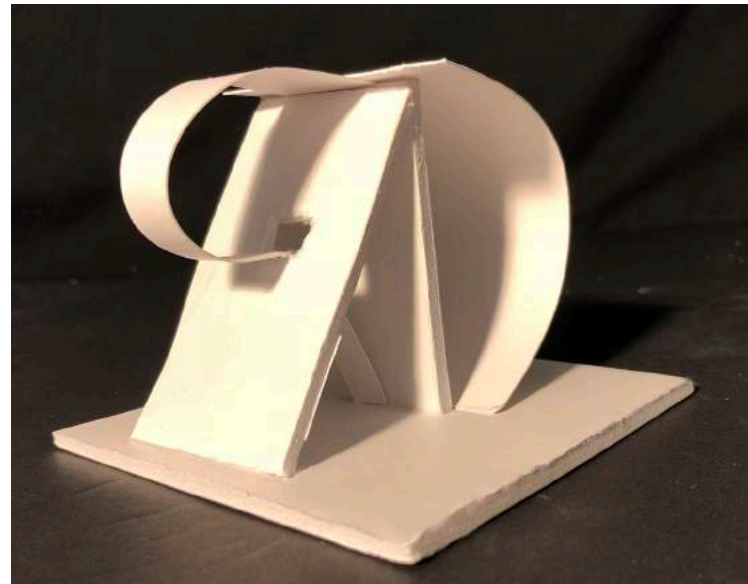
CONCEPT MODELS



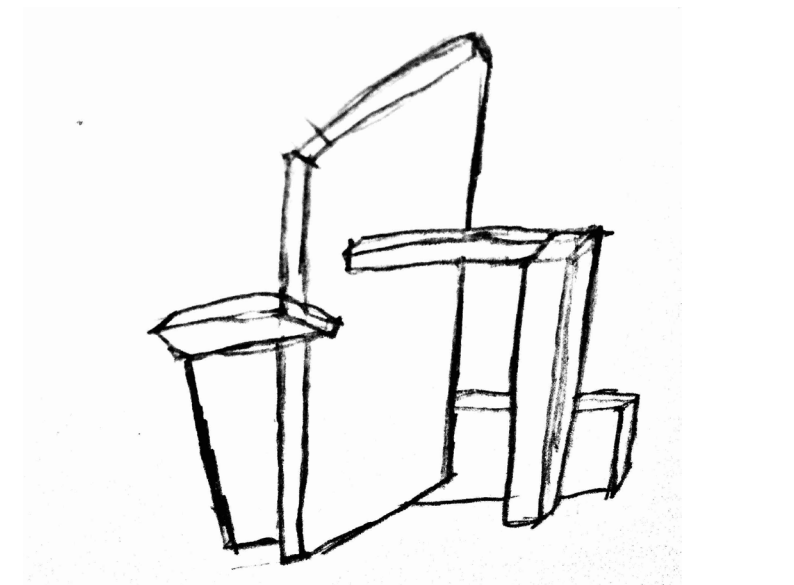
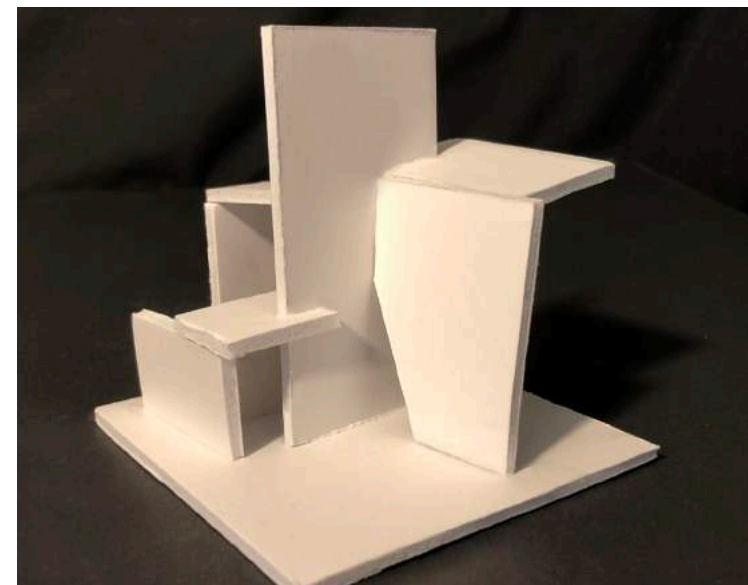
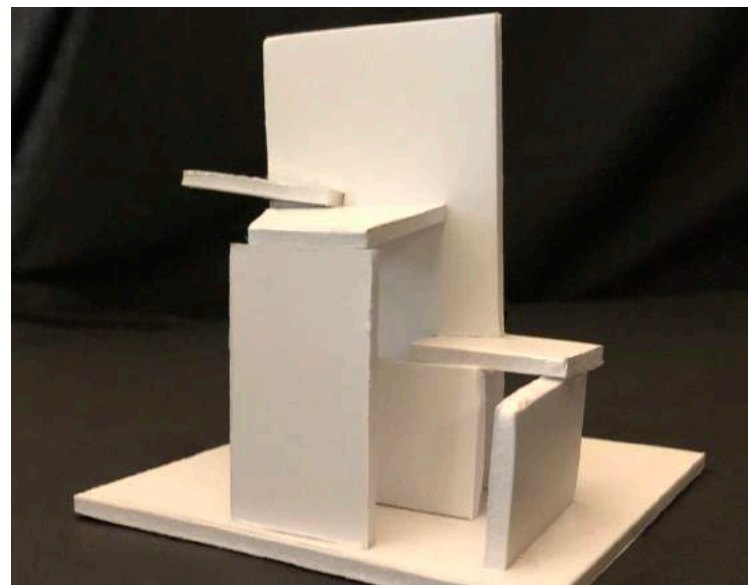
MODEL 01



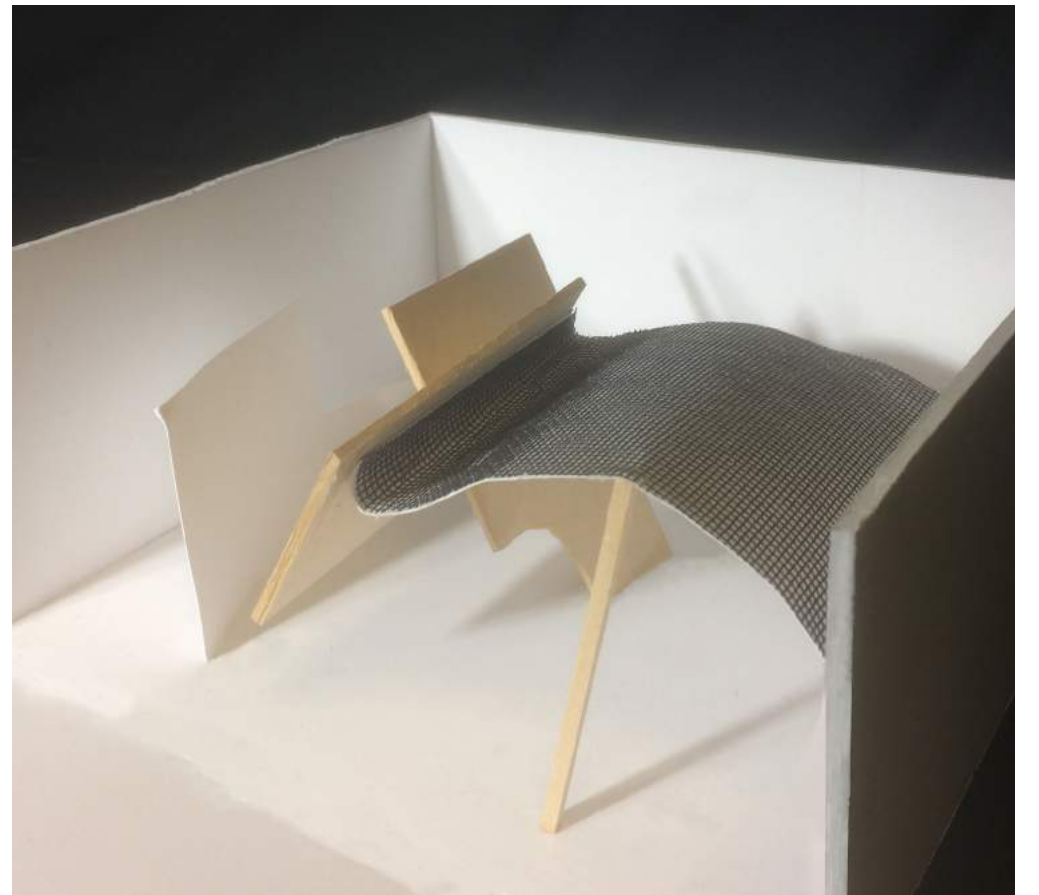
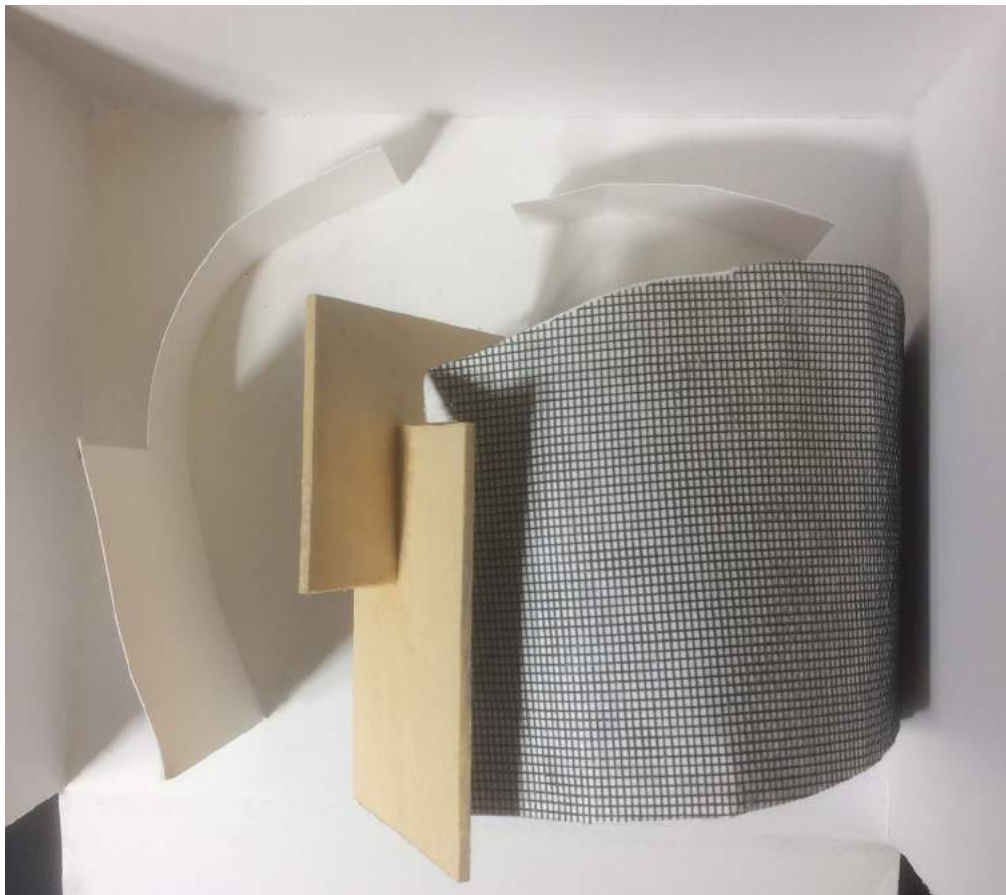
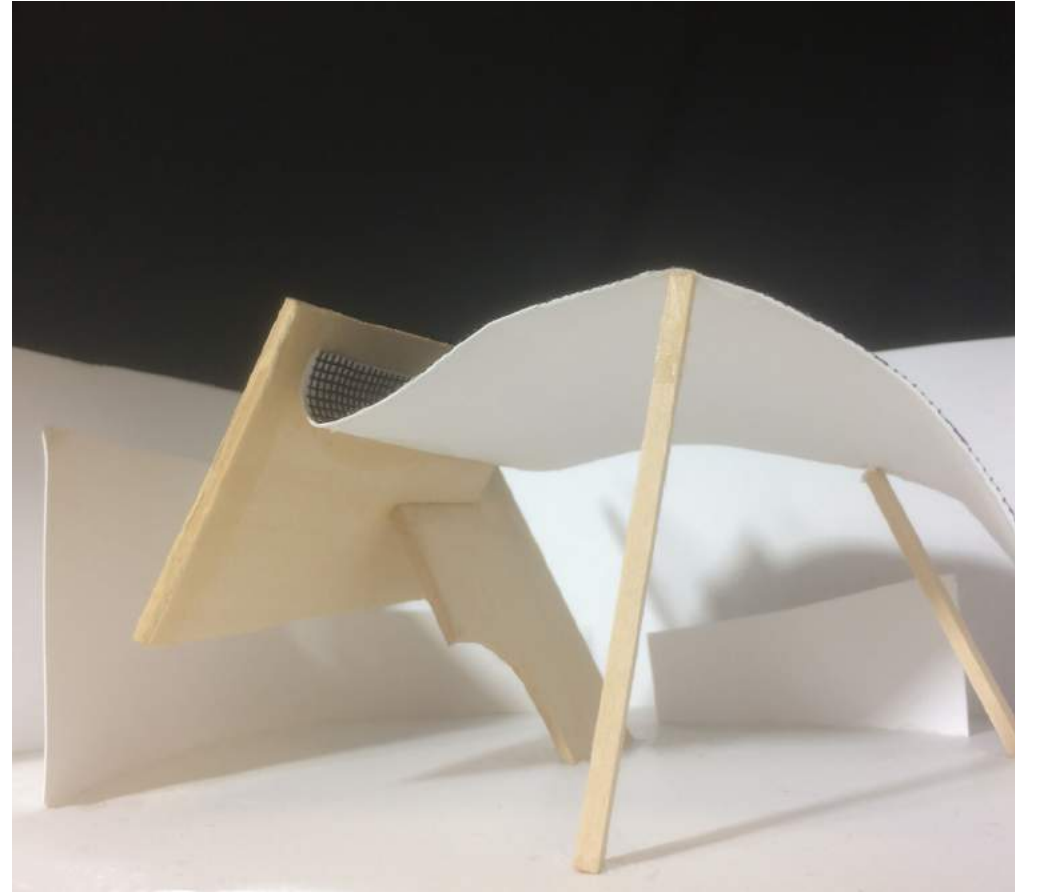
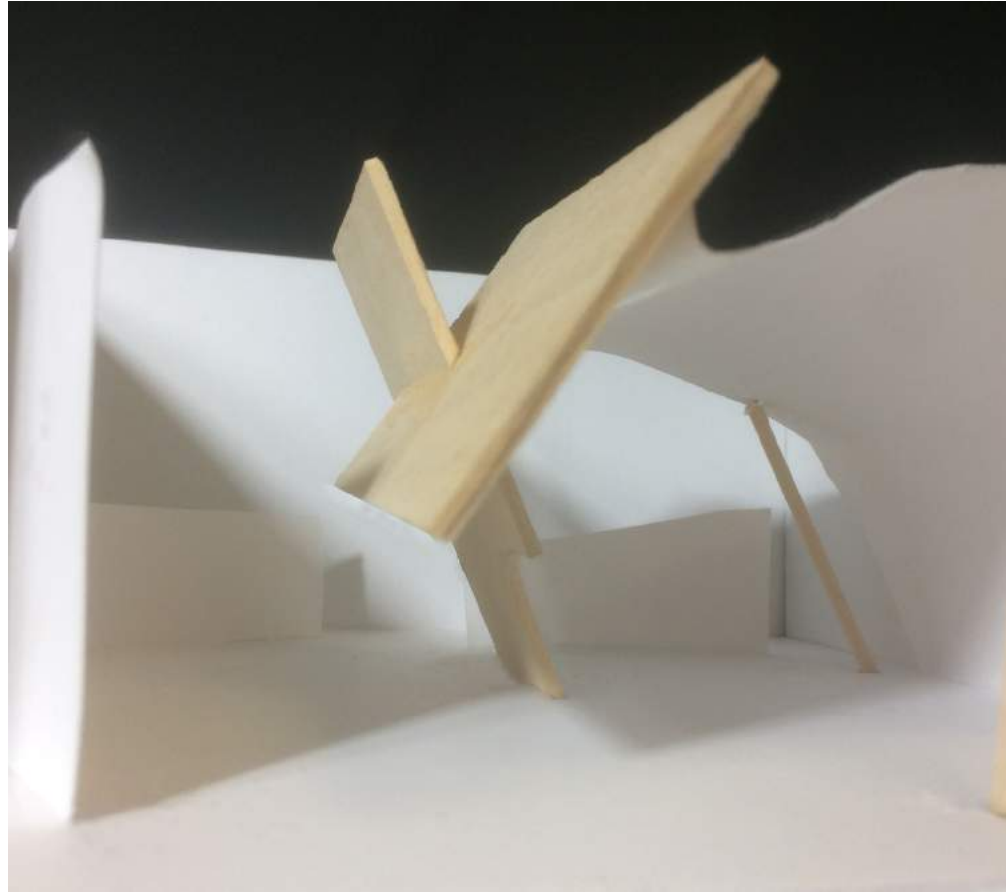
MODEL 02



MODEL 03



FINAL MODEL

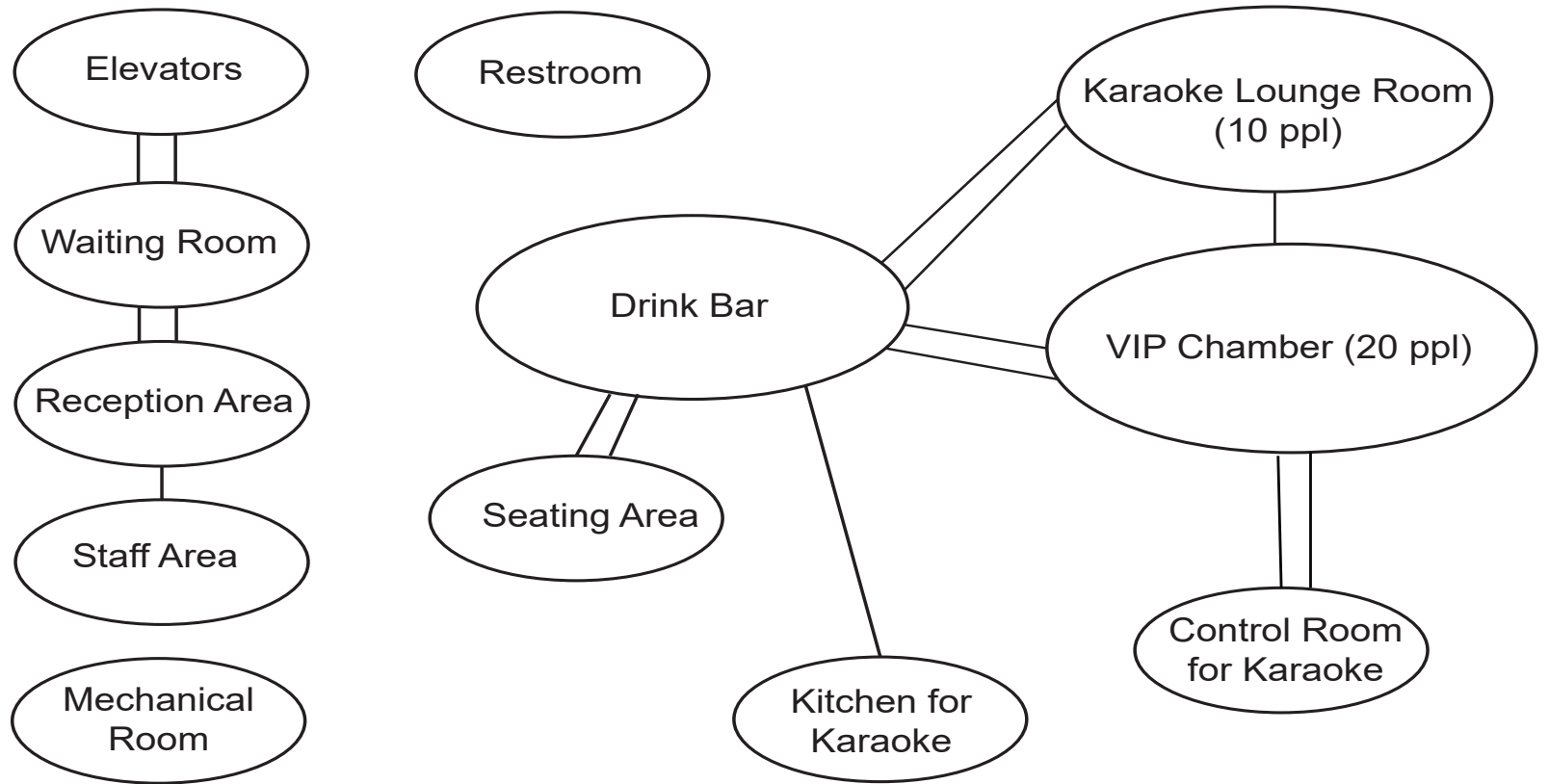
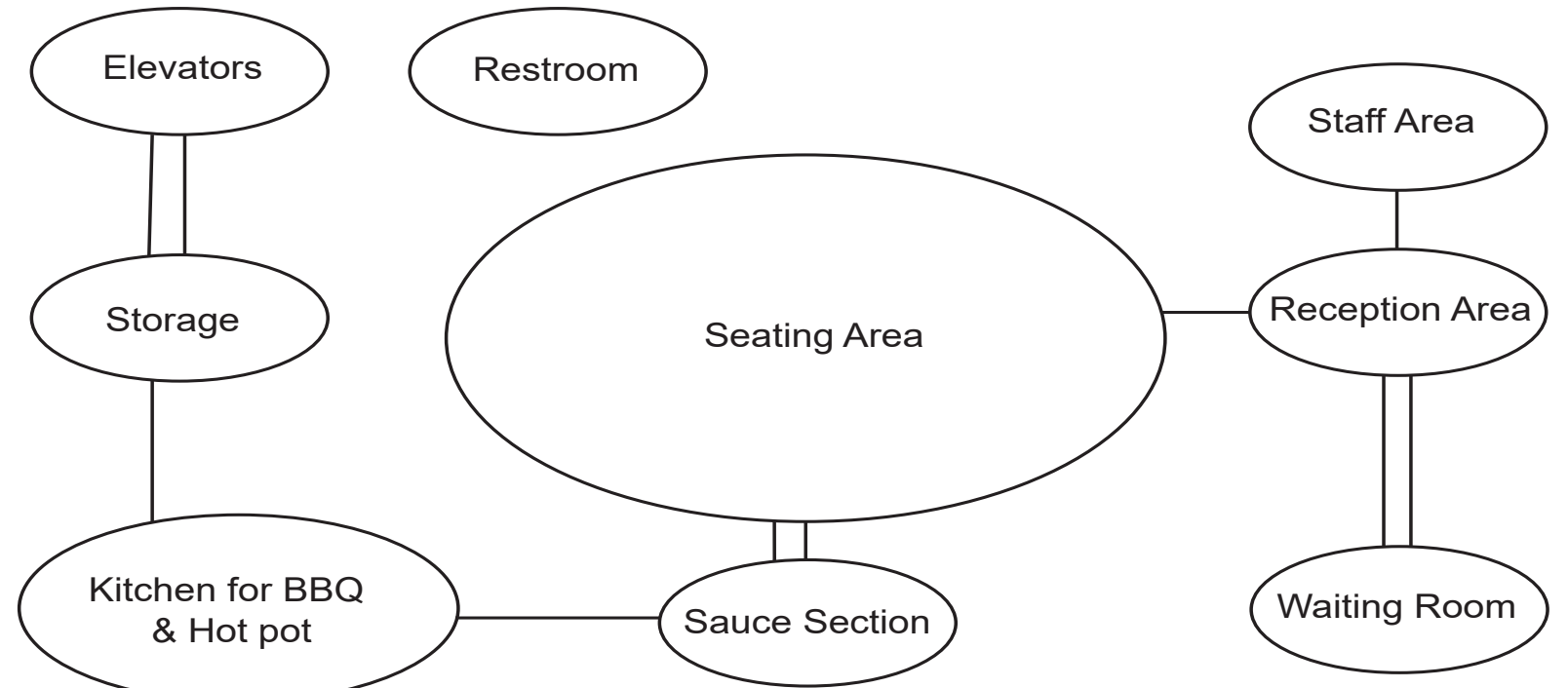


PROGRAMMING: LIST OF SPACES, MATRIX, BUBBLE DIAGRAM

- 1. Elevator: ADA
- 2. Restroom: ADA + Gender
- 3. Storage
- 4. Mechanical Room
- 5. Staff Area
- 6. Kitchen for BBQ & Hot Pot
- 7. Seating Area
- 8. Reception Area
- 9. Sauce Section
- 10. Drink Bar
- 11. Waiting Room
- 12. Control Room for Karaoke
- 13. Karaoke Lounge Room (15 ppl)
- 14. VIP Chamber (10ppl)
- 15. Kitchen for Karaoke(15ppl)

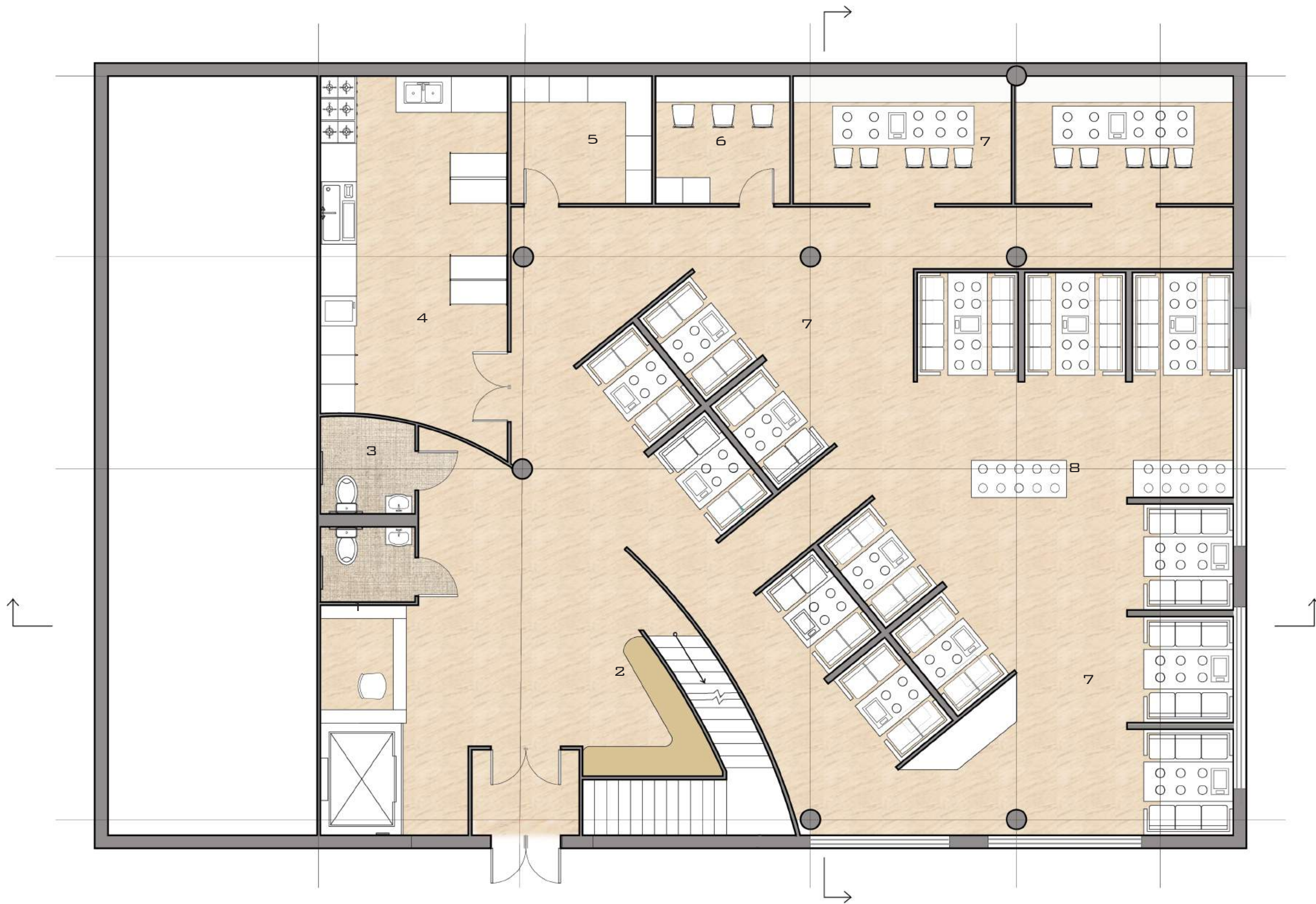
	1. Elevators: ADA	1FL, 2FL
	2. Restroom: ADA + Gender	1FL, 2FL
	3. Storage	1FL, 2FL
	4. Mechanical Room	2FL
	5. Staff Area	1FL, 2FL
	6. Kitchen for BBQ & Hot pot	1FL
	7. Seating Area	1FL, 2FL
	8. Reception Area	1FL, 2FL
	9. Sauce Section	1FL
	10. Drink Bar	2FL
	11. Waiting Room	1FL, 2FL
	12. Control Room for Karaoke	2FL
	13. Karaoke Lounge Room (10 ppl)	2FL
	14. VIP Chamber (20 ppl)	2FL
	15. Kitchen for Karaoke	2FL

- Must
- Should
- No Relationship



- Should
- ==== Must

FLOOR PLAN



FIRST FLOOR PLAN

SCALE: 1/8" = 1'-0"

LEGEND

- 1. RECEPTION
- 2. WAITING AREA
- 3. RESTROOM

- 4. KITCHEN FOR HOT POT
- 5. STORAGE ROOM
- 6. STAFF AREA

- 7. SEATING AREA
- 8. SAUCE SECTION



FLOORING MATERIAL



EQUIPMENT FOR BARBECUE

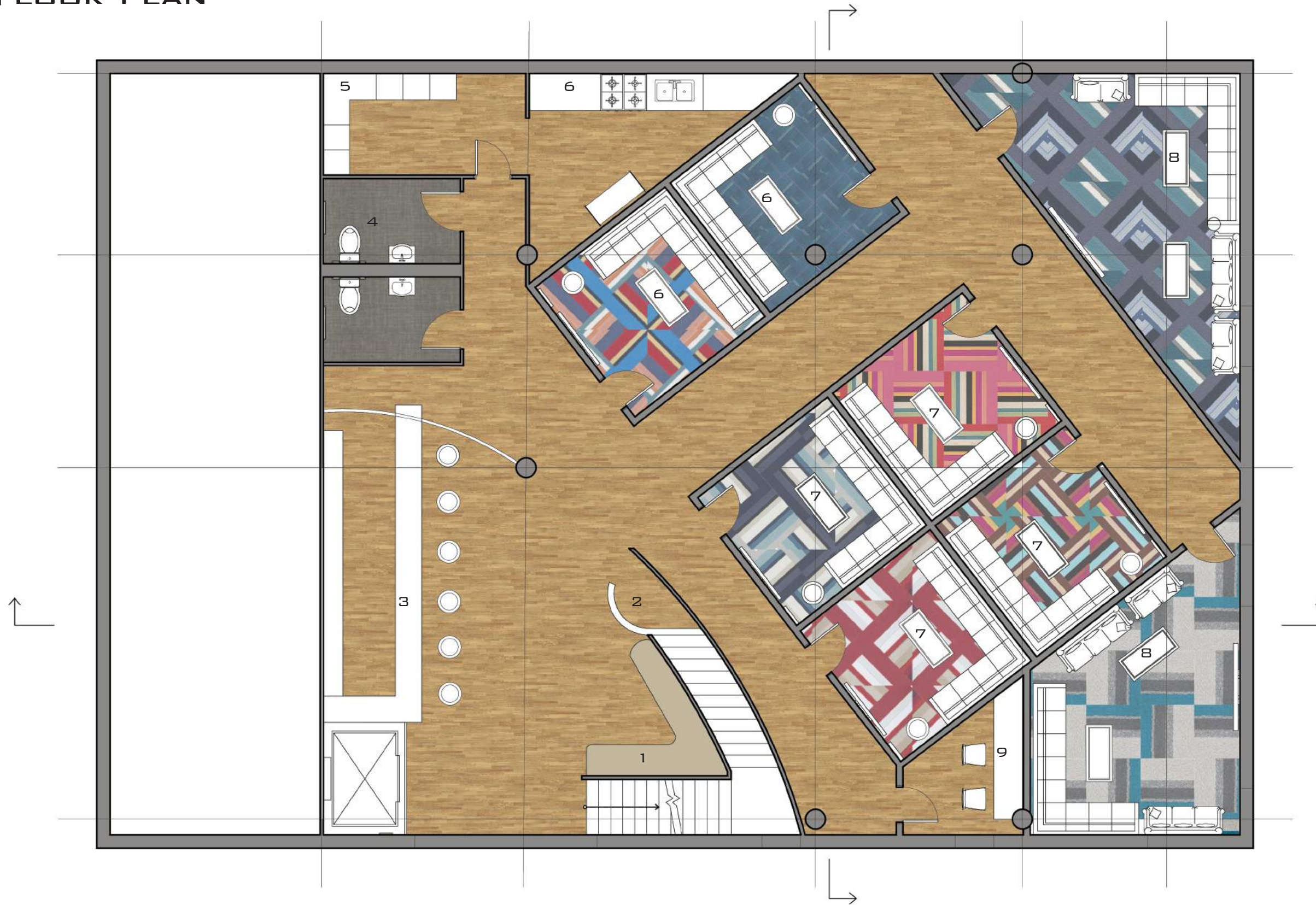


TABLE FOR THE RESTAURANT



SAUCE SECTION

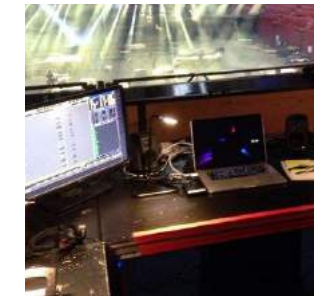
FLOOR PLAN



FLOORING MATERIAL



CARPET FOR KARAOKE LOUNGE



CONTROL ROOM



BAR

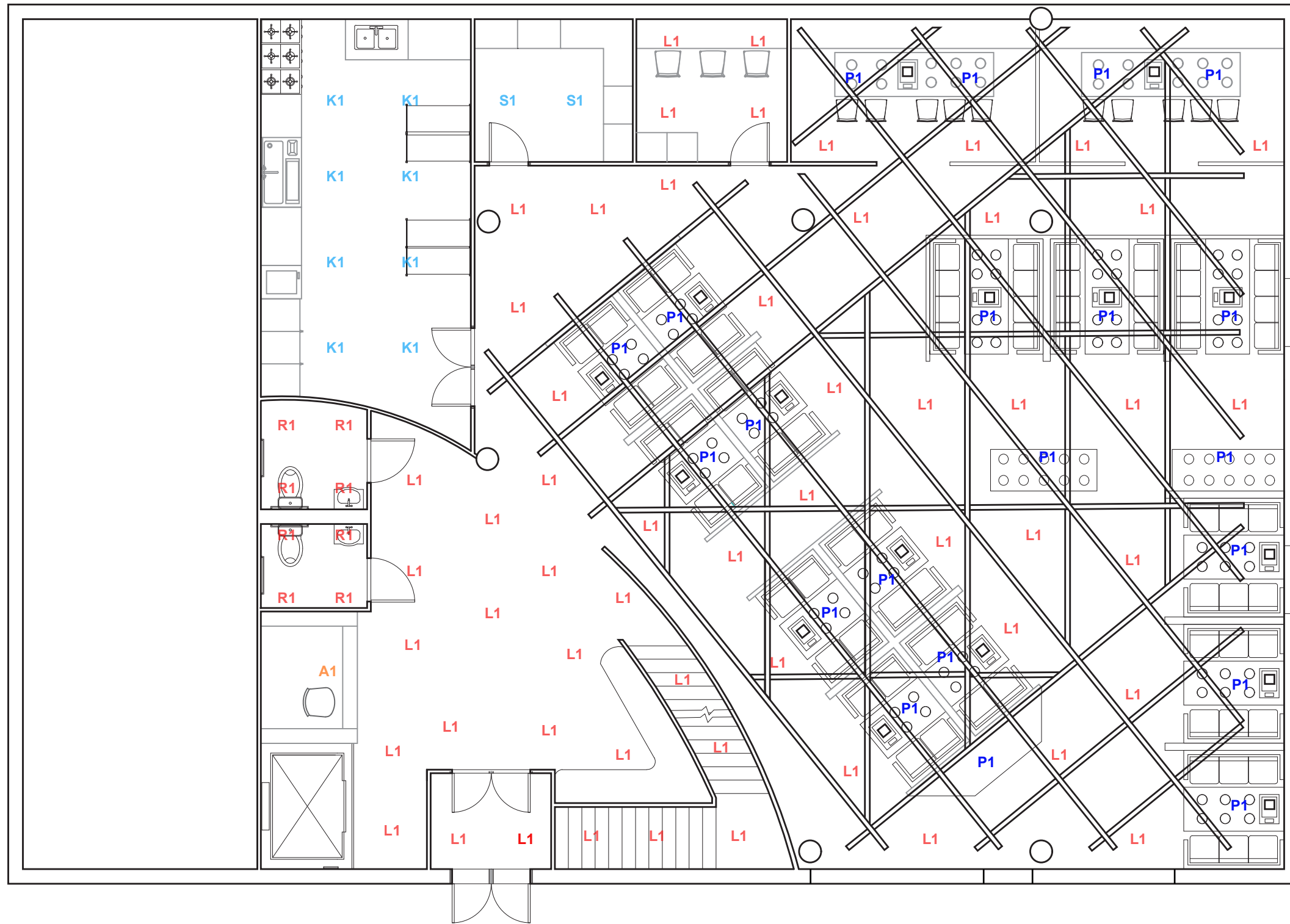
SECOND FLOOR PLAN

SCALE: 1/8" = 1'-0"

LEGEND

- | | | |
|-----------------|-------------|-------------------|
| 1. WAITING AREA | 4. RESTROOM | 7. KARAOKE LOUNGE |
| 2. RECEPTION | 5. STORAGE | 8. VIP CHAMBER |
| 3. DRINK BAR | 6. KITCHEN | 9. CONTROL ROOM |

REFLECTED CEILING PLAN



LENGEND



S1
LED WRAP FIXTURE



K1
LED PANEL LIGHT



R1
RECESSED LIGHT



L1
RECESSED LIGHT



A1
WIRE PENDANT LIGHT

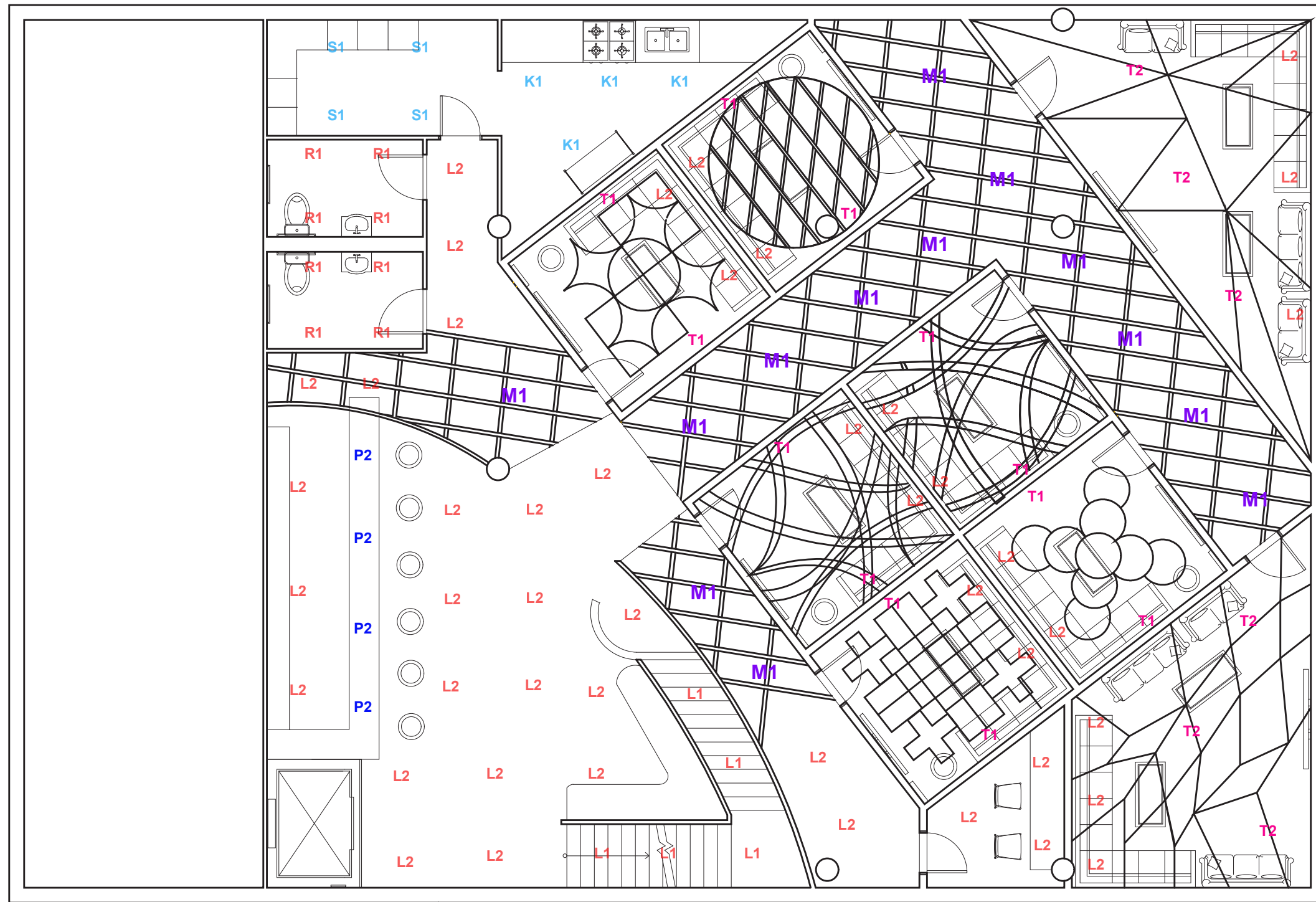


P1
ONE LIGHT PENDANT

REFELECTED CEILING PLAN - FIRST FLOOR

SCALE: 1/8" = 1'-0"

REFLECTED CEILING PLAN



REFLECTED CEILING PLAN - SECOND FLOOR

SCALE: 1/8" = 1'-0"

LENGEND



S1
LED WRAP FIXTURE



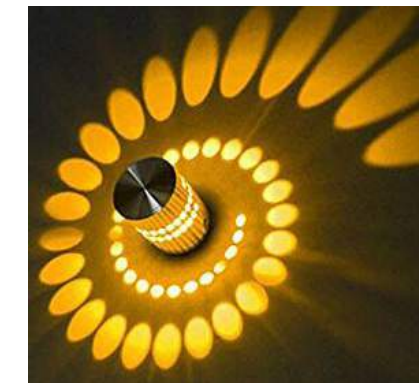
K1
LED PANEL LIGHT



R1
RECESSED LIGHT



M1
FLUSHMOUNT



T1
LIGHT SCONCE CEILING



T2
3D EFFECT LIGHTING



P2
ONE LIGHT PENDANT



L2
LED ROUND CEILING LIGHT

SECTION DRAWING



LONGITUDINAL SECTION

SCALE: 1/8" = 1'-0"

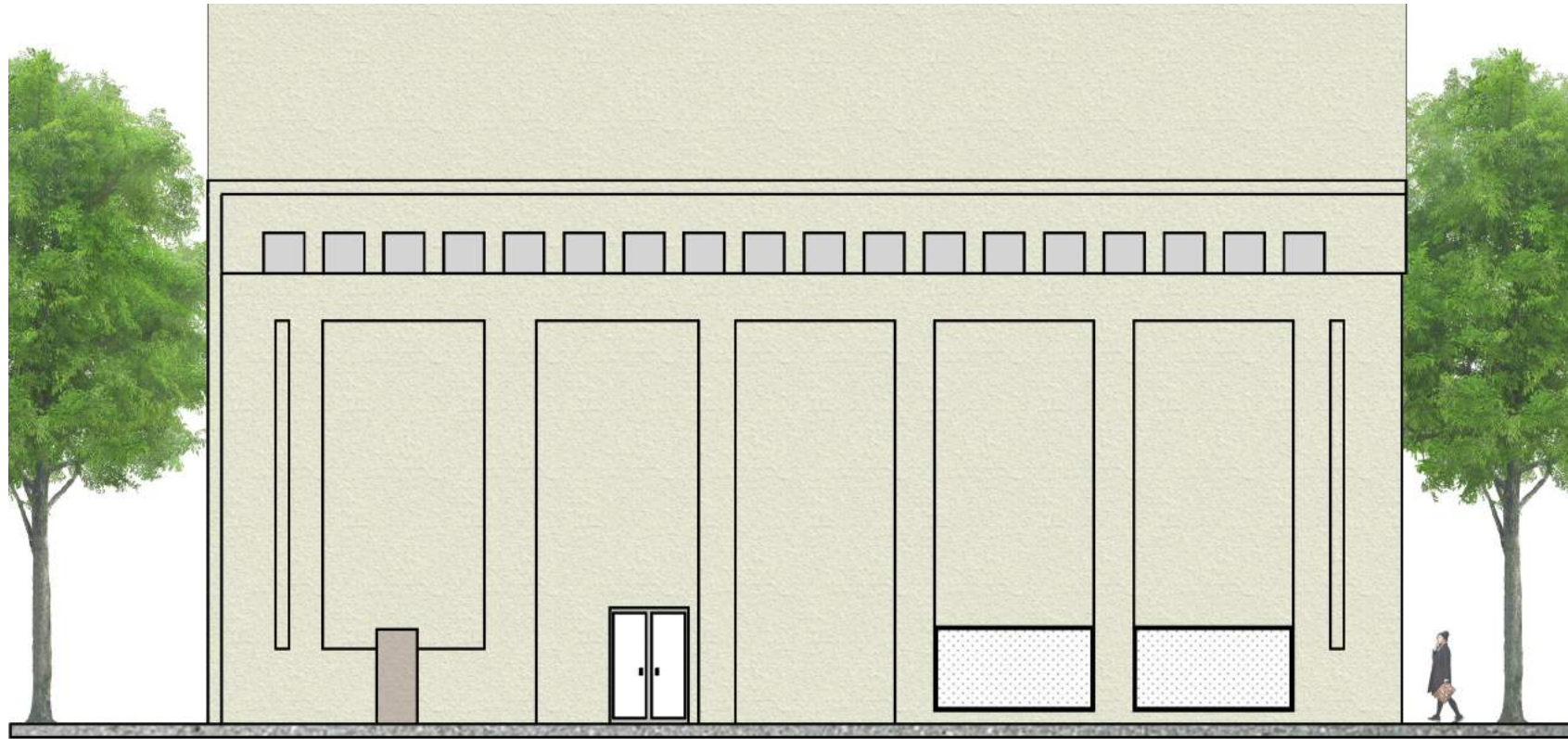
SECTION DRAWING



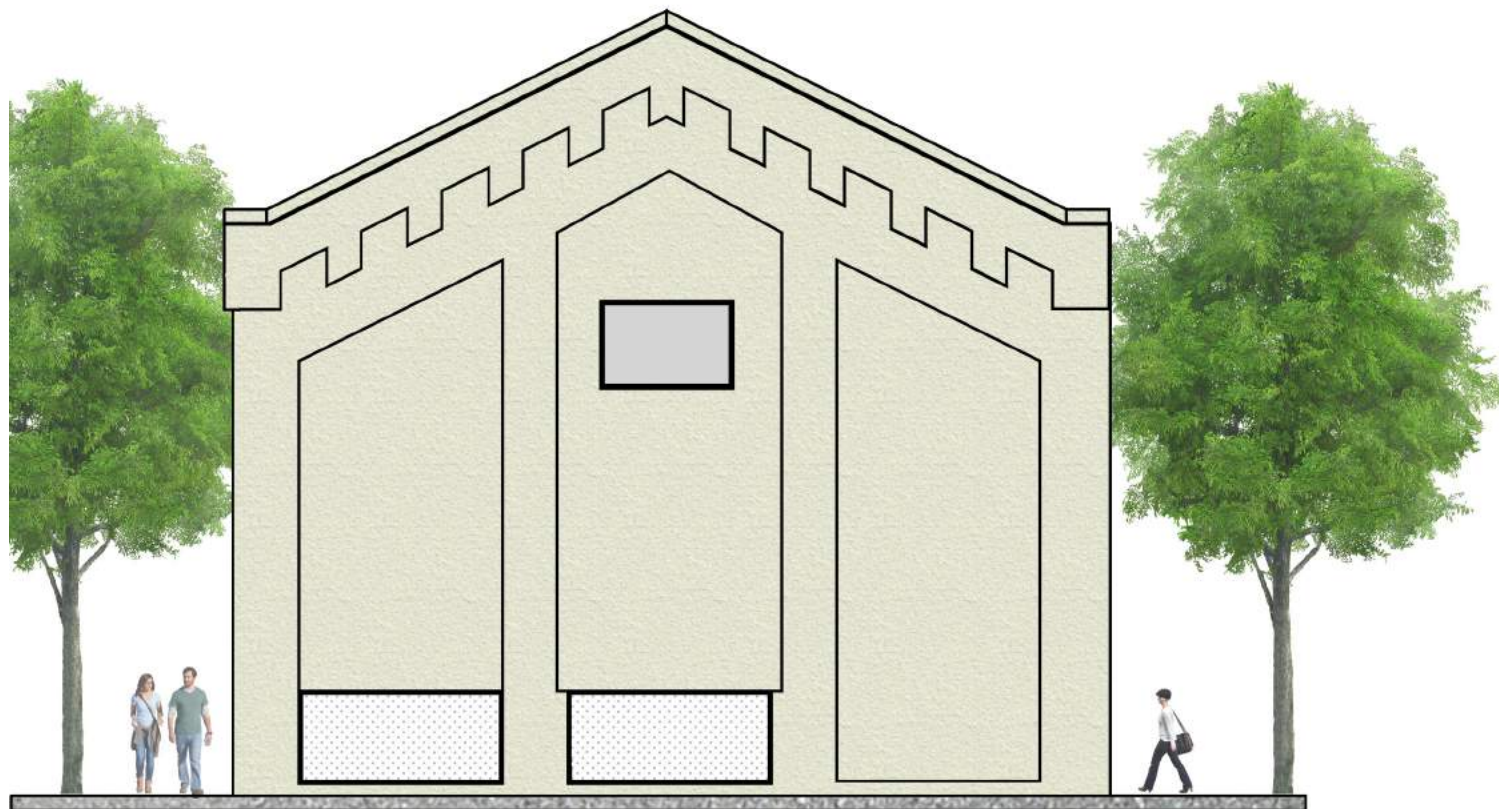
CROSS SECTION

SCALE: 1/8" = 1'-0"

ELEVATIONS



SOUTH ELEVATION



EAST ELEVATION



CHANGE OF WINDOWS AND ADDITION OF THE ENTRANCE



CHANGE OF WINDOWS

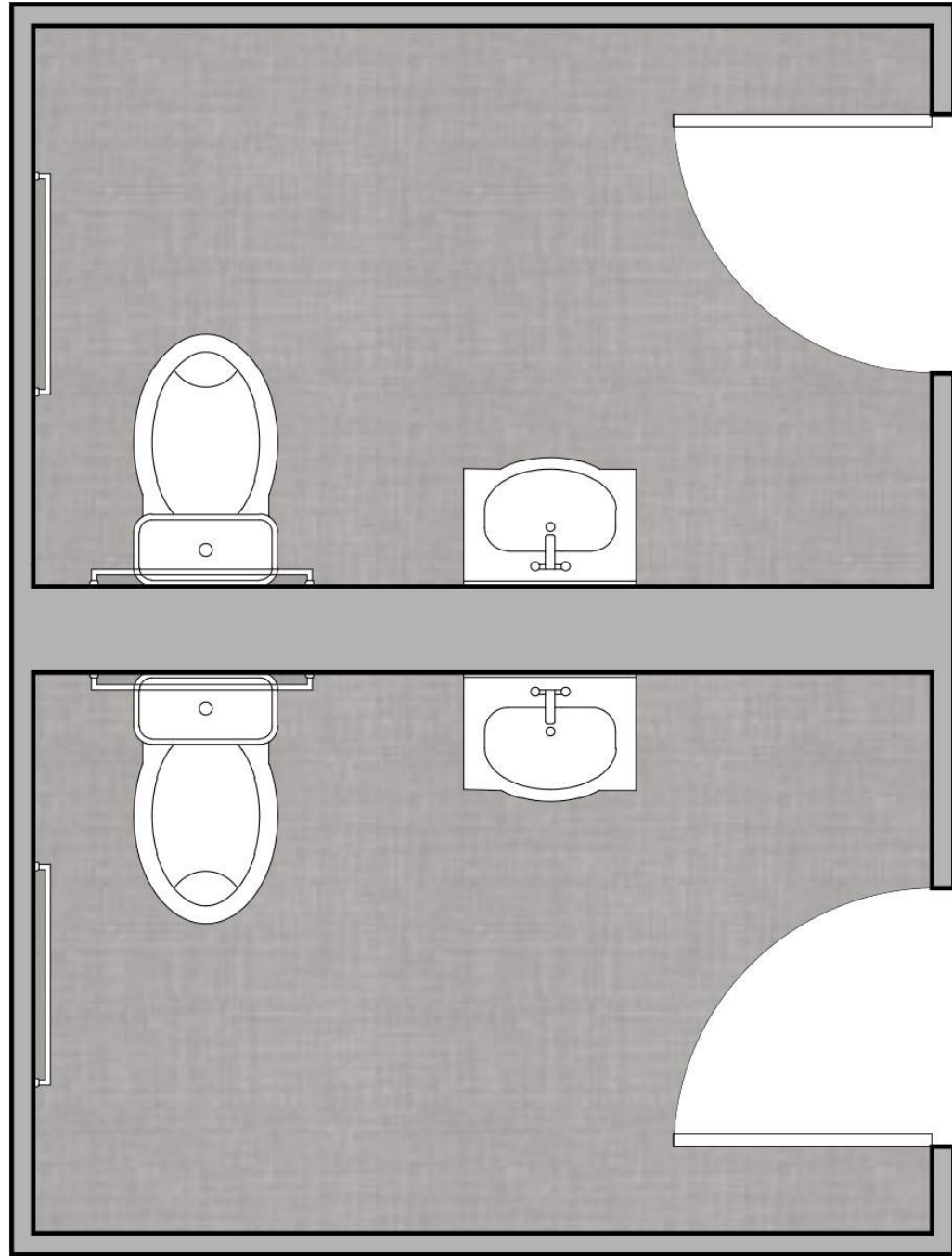


EXTERIOR MATERIALS



NEW WINDOW DESIGN

ADA BATHROOM WITH MATERIAL IMAGES



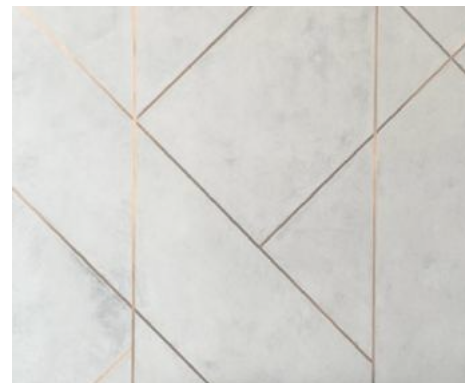
ENLARGED BATHROOM LAYOUT (2ND FL)



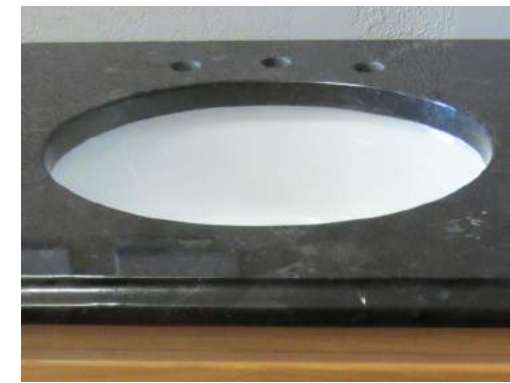
ELEVATION A



ELEVATION B



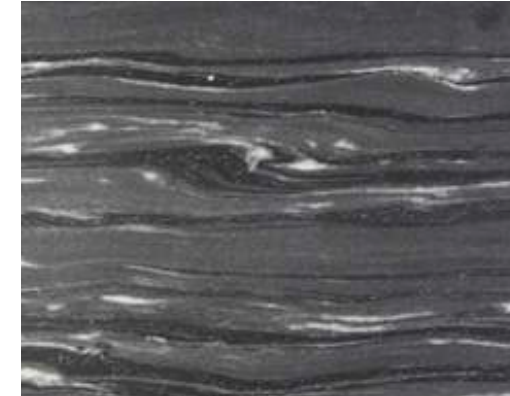
WALL TILE



DROP IN BATHROOM SINK



FLOOR MATERIAL



MATERIAL OF SINK



TOWEL BAR



BATHROOM SINK FAUCET

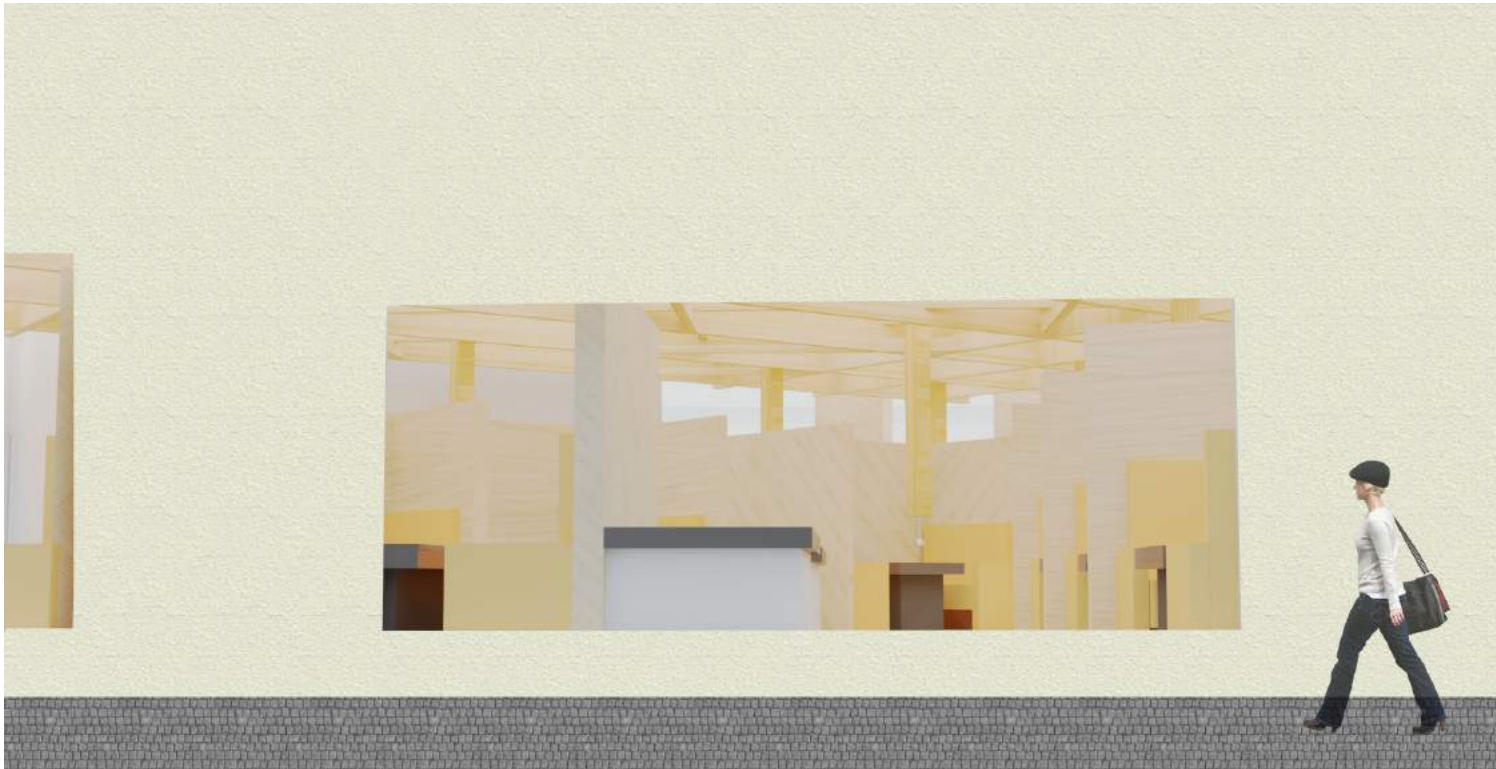


TOILET

RENDERINGS



SEATING AREA FOR HOT POT



EXTERIOR VIEW



DRINK BAR