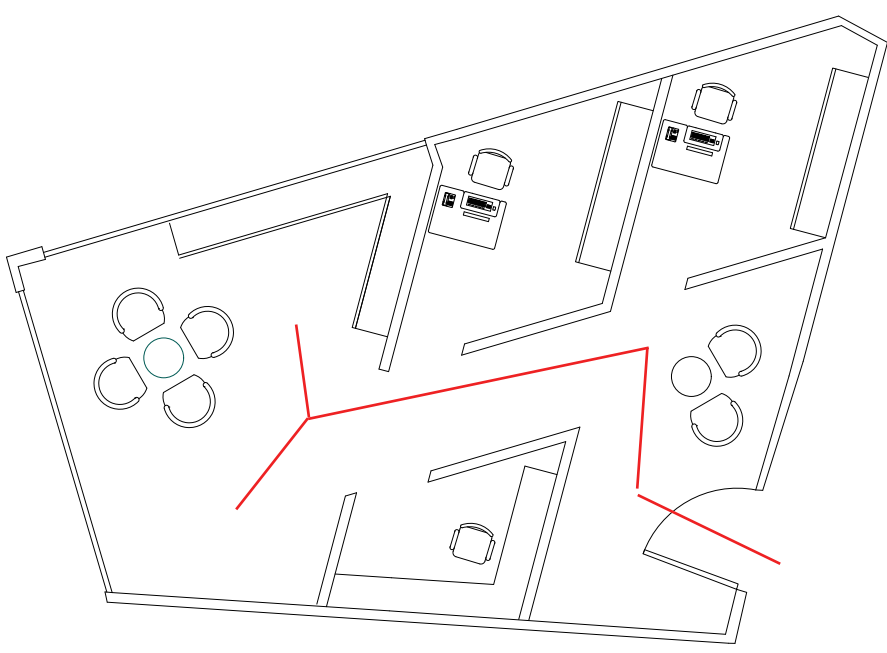
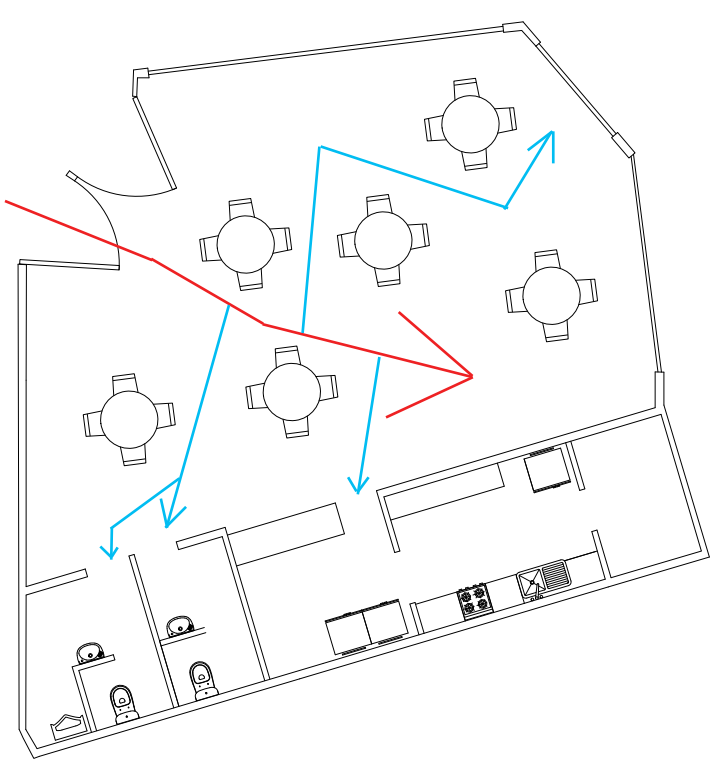


RED LINE REPRESENTS MAIN CIRCULATION PATTERN AND ENTRANCE

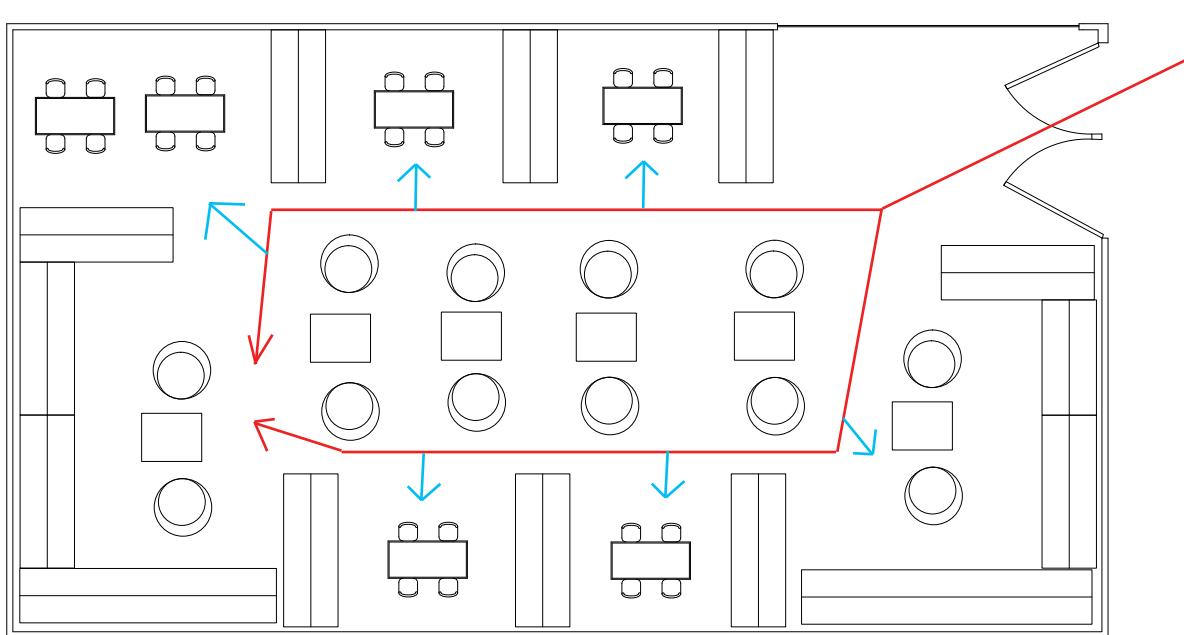
created a double high space with lots of glass. once i the building you are greeted by a big tv screen that displays information about the library, and if u need more info you have help desks that you can approach.



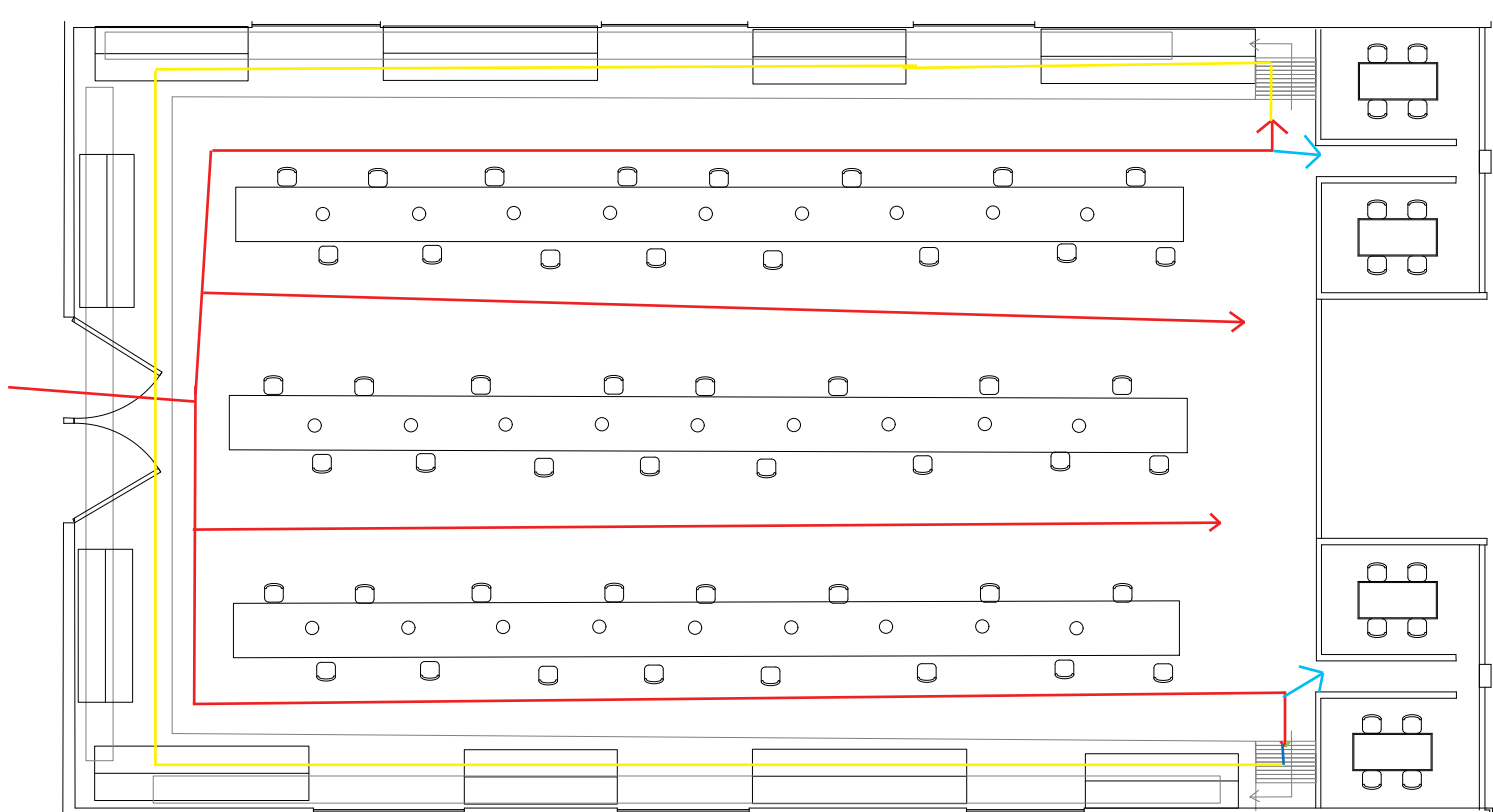
Office space, in my design this would be located right behind the help desks. this space is intended to be relaxation room and also work room for staff.



this wuld be a cafe with 2 bathrooms and big citchen, also very dense with glass and open areas.



childrens library once you enter , you are forced to split the paths and go around the tables located in the middle which forces you to experiance other spaces with in it. included in th design is group study patitions which were created by book shelvs, and also in the idea i had that i would put windows in every group study space.



main reading room. very big yet nicely orginized for readers. once you walk in again you are forced to split you path into 4 different ways, once you pass all the bookshelvs and tables located in the center you will see glass wall that has 2 private study rooms on each side. and right before study rooms you get stair case on both side to walk up to book selvs that are 12' off the main floor. its represented in yellow line on the diagram.