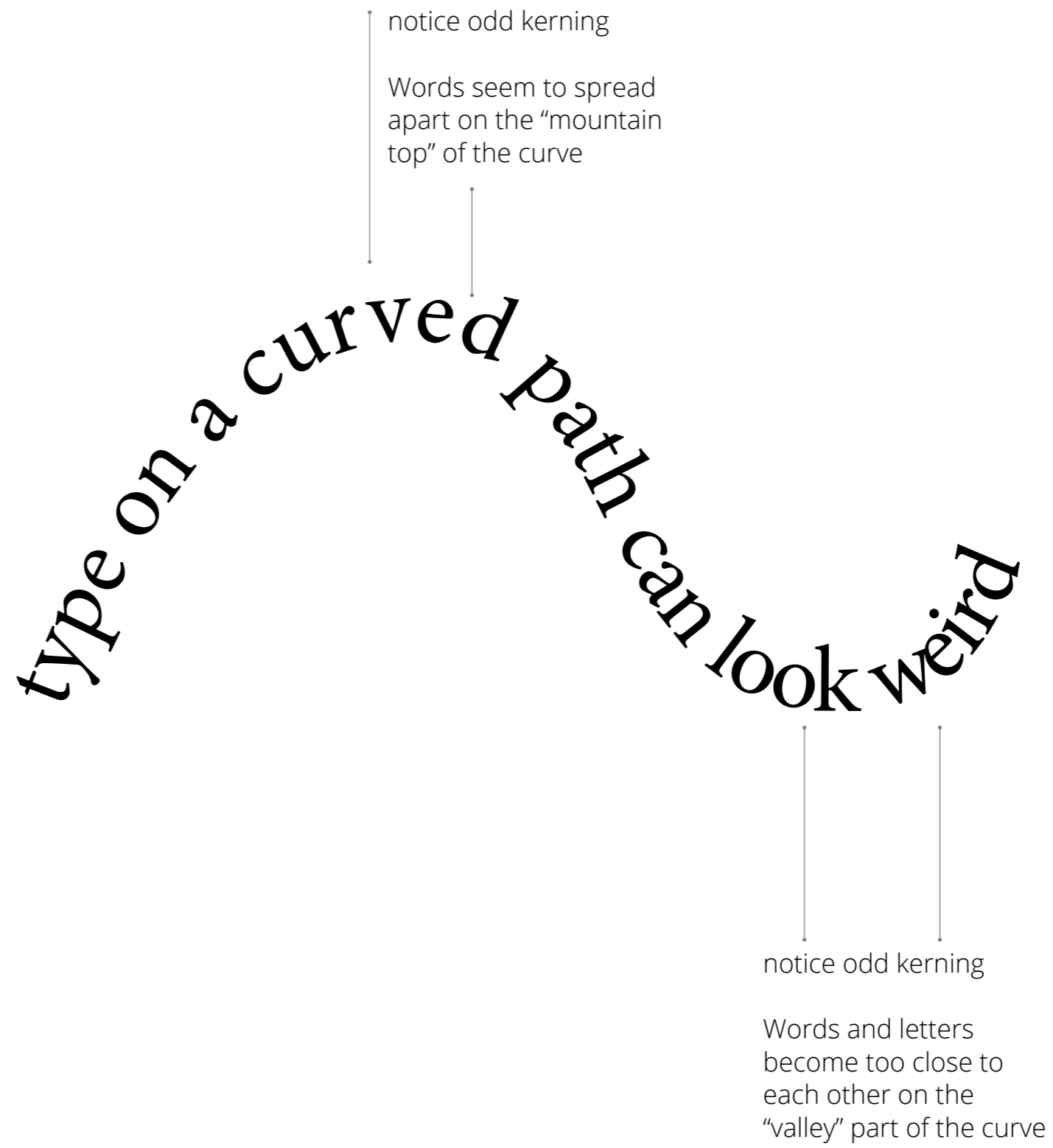


# Quick Reference: Type on a Path

Communication Design  
COMD1127 Type & Media

# Curved Path



# Angled Path

type on a sharp-angled path can look weird

notice odd spacing

Words seem to spread apart on sharp angles of this path.

notice odd word break

Words and letters overlap each other

type on a sharper-angled path can look upside down

Upside down words become hard to read. Also notice odd word breaks

# Circular Path

Text can be upside down  
Type on a circular path can be very tricky.

How do we read this?

direction can be a problem

affecting legibility

notice odd spacing  
Words seem jumpy  
in some areas of  
the curve

# Vertical Path

V e r t i c a l  
t o d a y i s  
t y

How do we read this?  
Legibility could be an issue.

Vertical type

VERTICAL TYPE

today is Tuesday

TODAY IS TUESDAY

ЯDZDREY

If it is necessary to use a vertical path. IT is best to create a regular horizontal text box, then flip 90 degrees.

Type reads best when the starts of the words is at the top .

Note that there are some exceptions. For example logotypes or signage.

# Make it better

There are ways to fix these issues:

Control the curves

*Remember, that the designer can adjust the curves*

Make adjustments to type size and typeface.

*or change typeface and font size to make things read better*

*• hello this is the top •  
this is the bottom*

clear direction