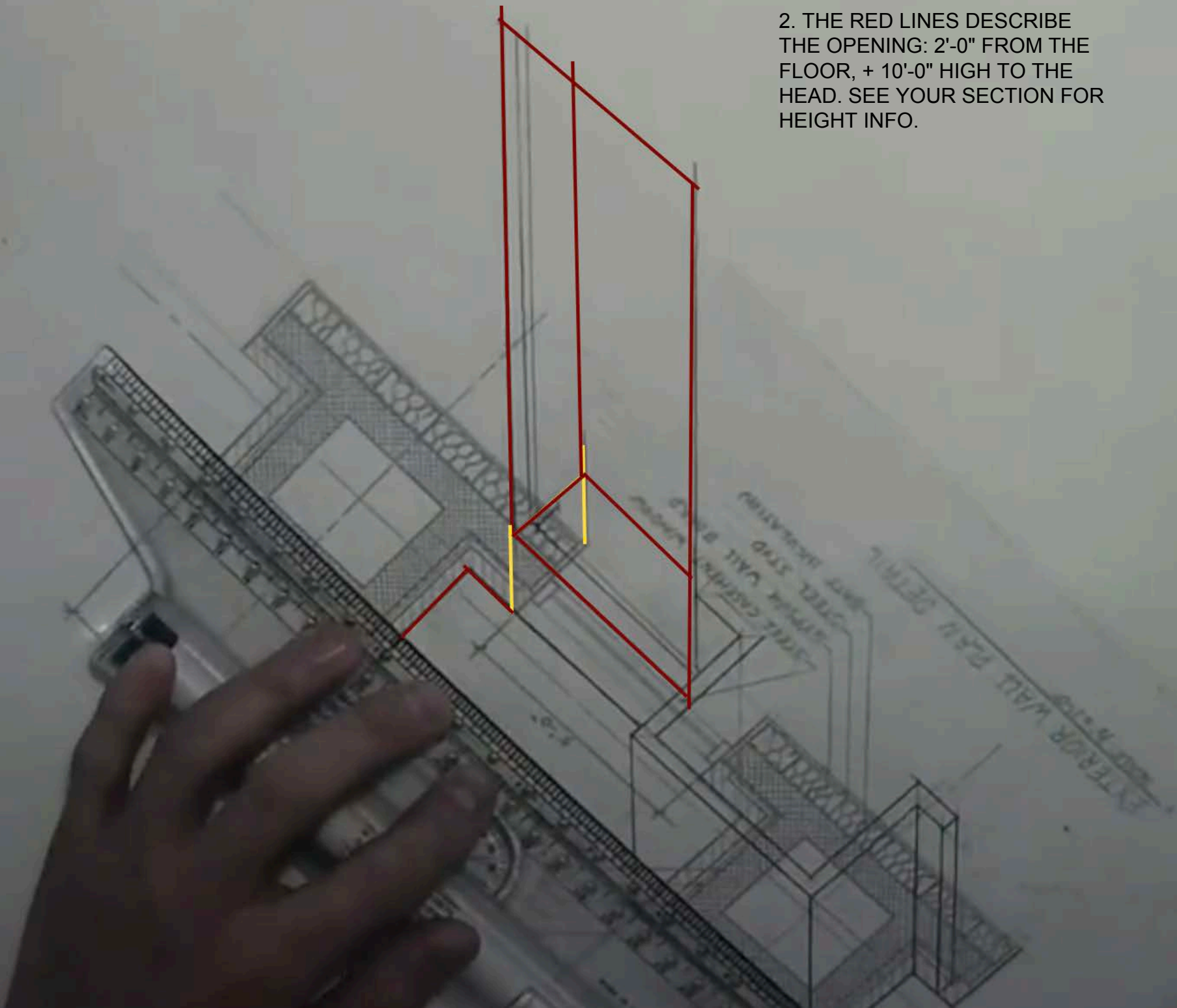
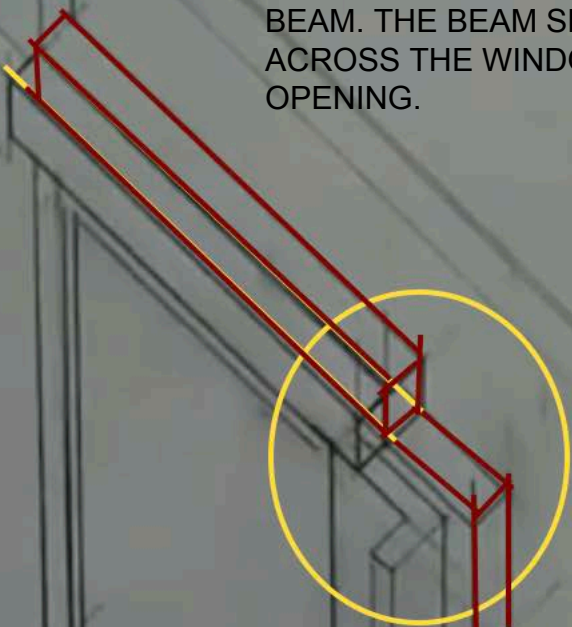




2. THE RED LINES DESCRIBE THE OPENING: 2'-0" FROM THE FLOOR, + 10'-0" HIGH TO THE HEAD. SEE YOUR SECTION FOR HEIGHT INFO.



3. THIS DRAWING SHOWS THE CMU WALL THAT SUPPORTS THE BOND BEAM. THE BEAM SPANS ACROSS THE WINDOW OPENING.

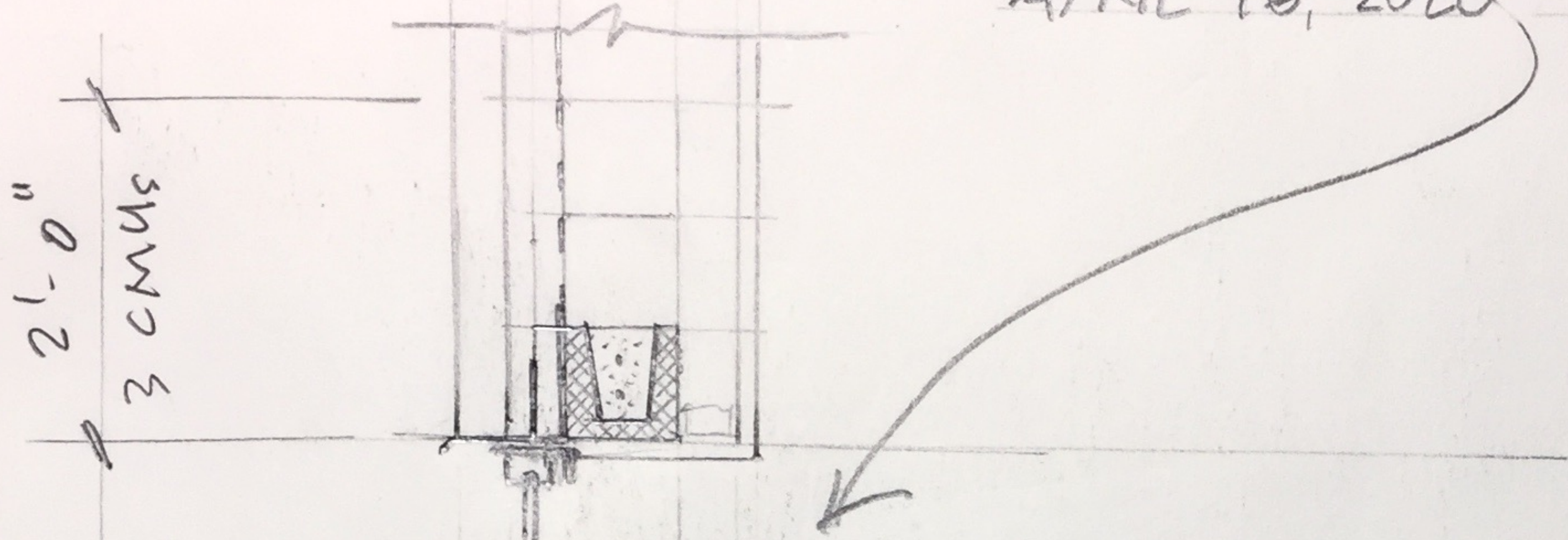


CMU WALL

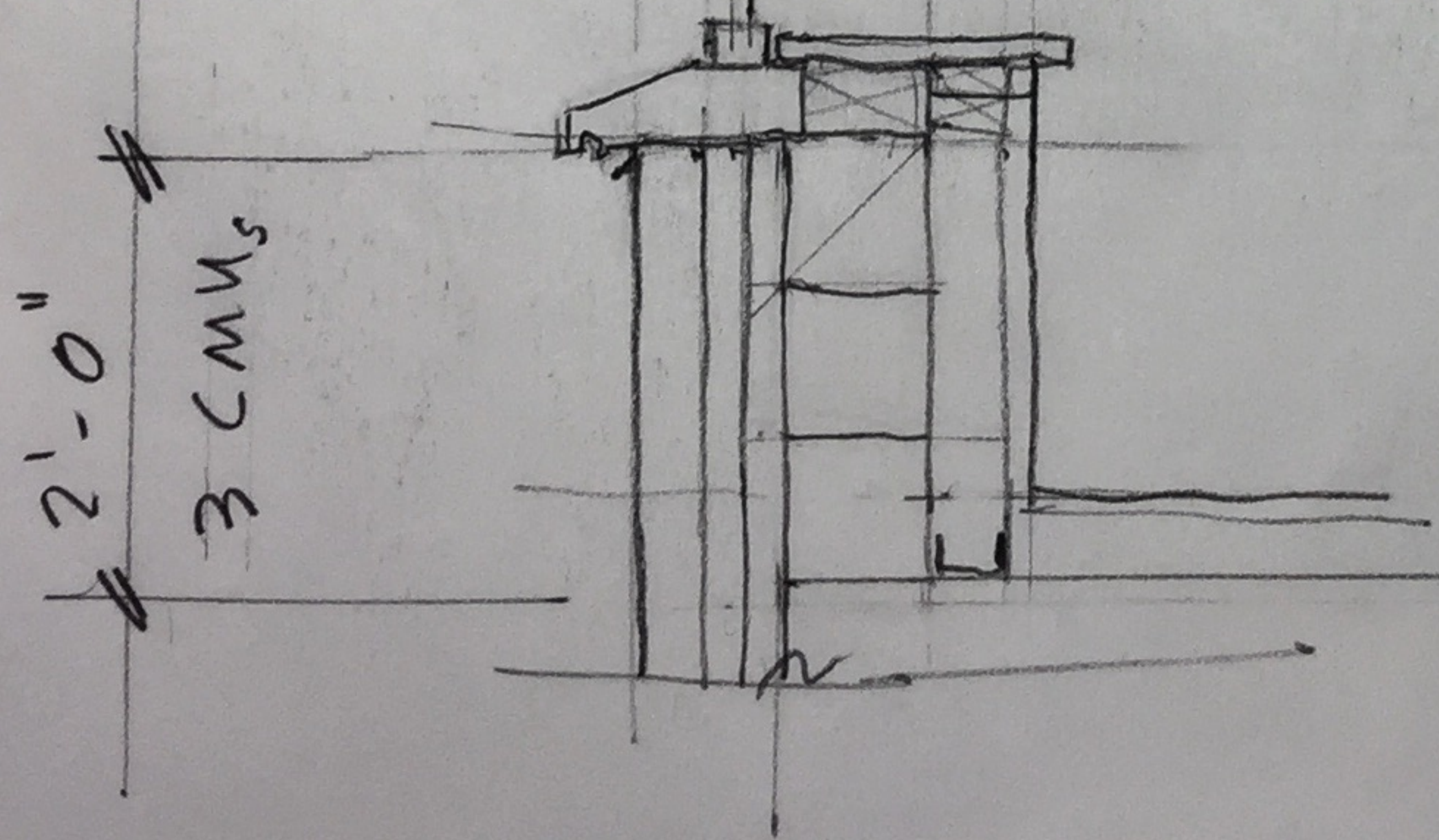
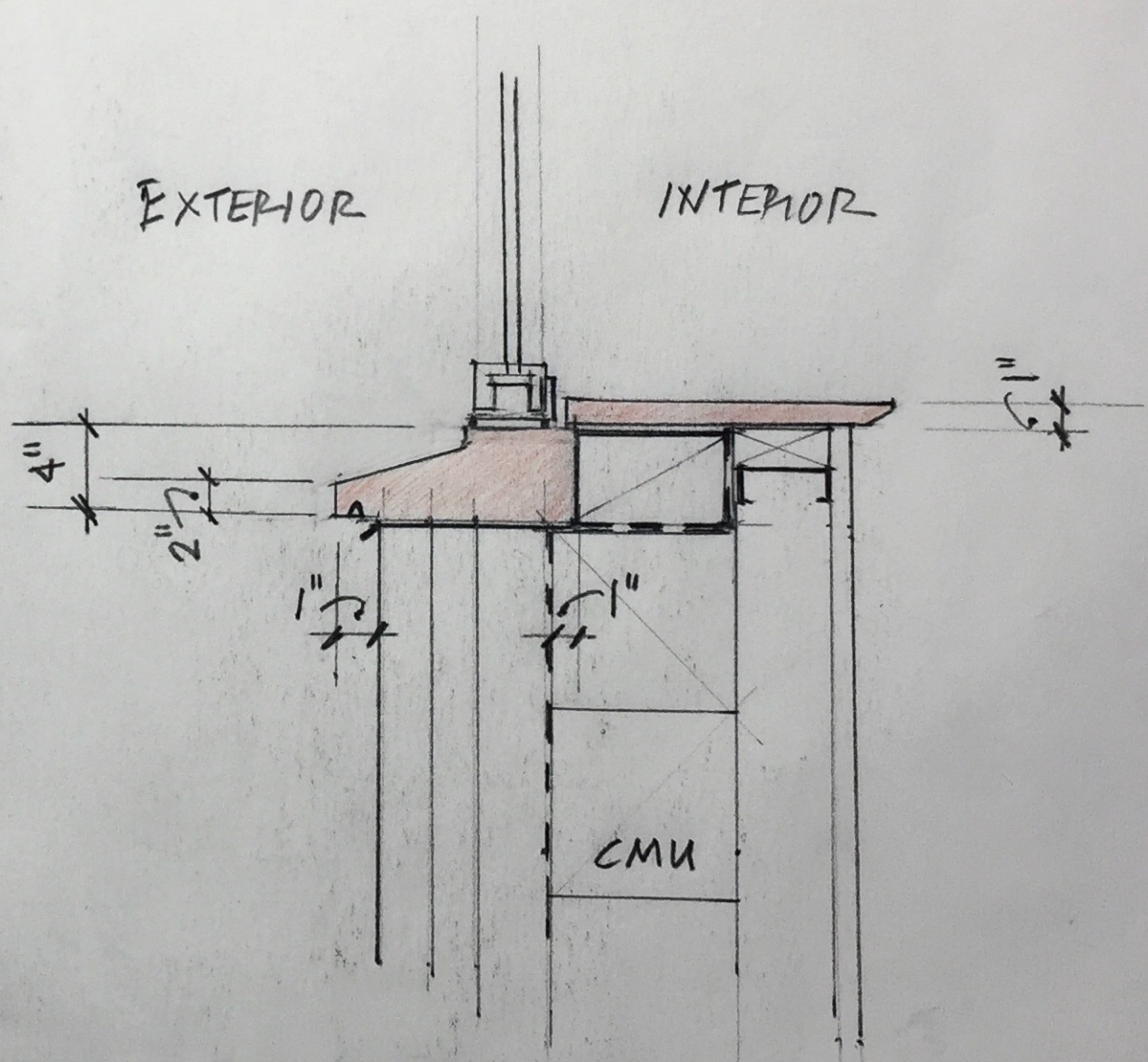




WALL SECTION INFO  
FOR DRAWING DUE THURSDAY  
APRIL 16, 2010



10'-0"  
MASONRY OPENING



SILL DETAIL

USE THIS  
TO DRAW  
YOUR SECTION  
@ 1/2" = 1'-0"

DRAW  
DATUM INFO