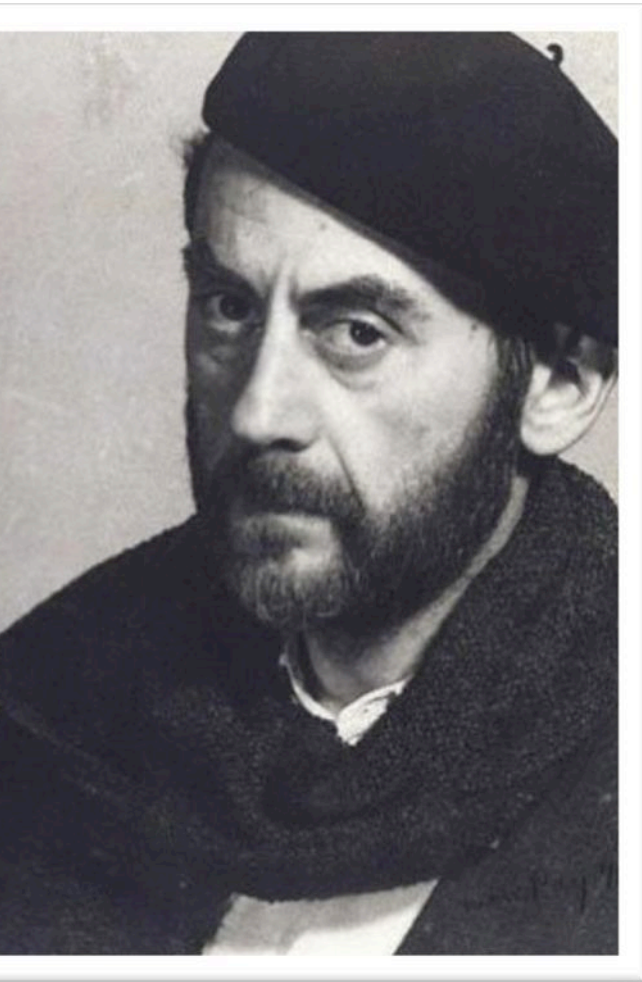


MAN RAY

By Jennivieve, Heawon, Grisell, Katherine.

Man Ray



Emmanuel Radnitzky

1890–1976

Influenced by film, painting, the depiction of movement and silhouettes

Taught by Robert Henri and George Bellows at the Francisco Ferrer Social

Most of his works are made using the Gelatin silver print process.

Inspired by common everyday objects, camera less photos, “Rayographs”

Man Ray was a leading figure of “Dada” and “Surrealism”

The only American who is credited with launching both influential movements

Thought Provoking

Sexist

Minimalistic

Dynamic



“Don’t eat me”



“Glass Tears”



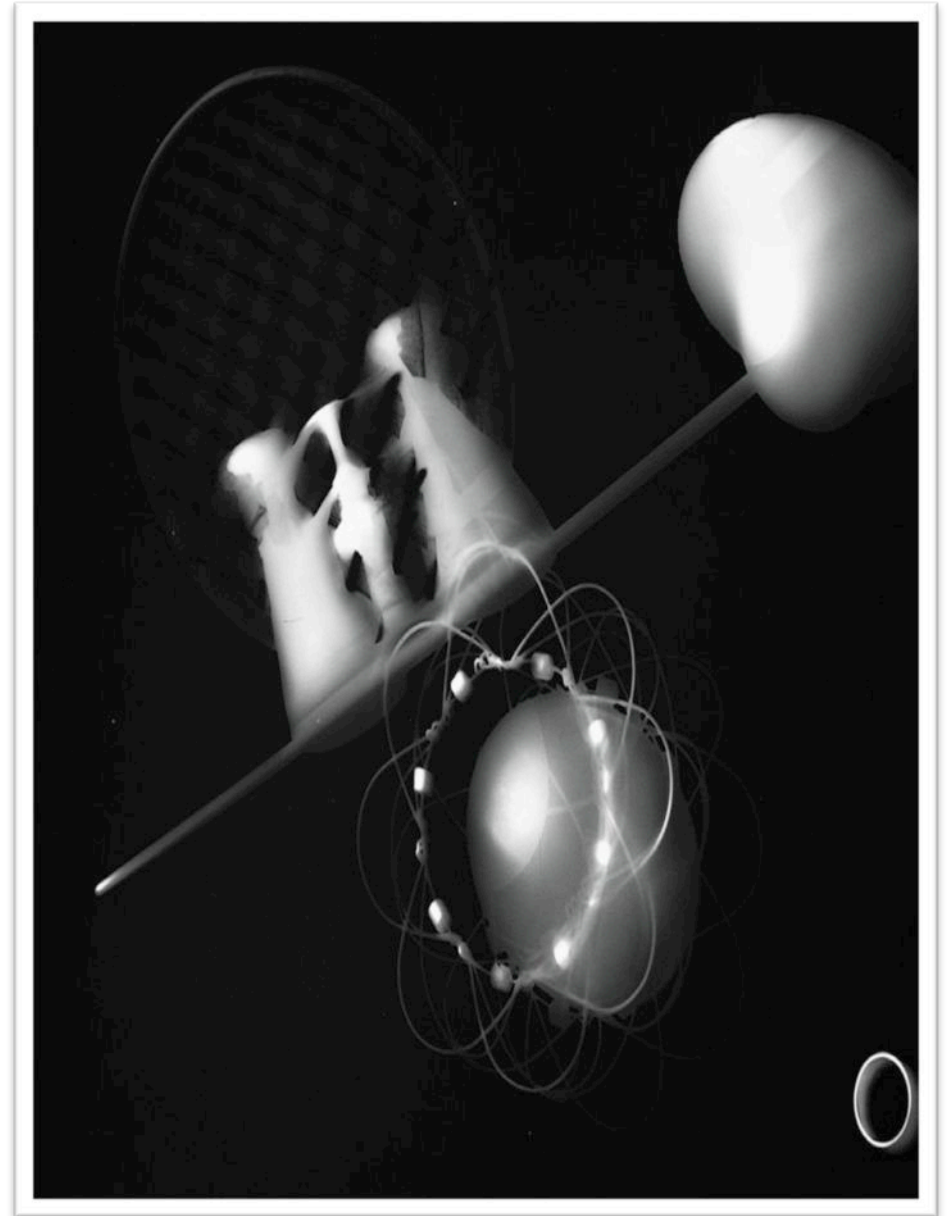
“It’s a man’s world”



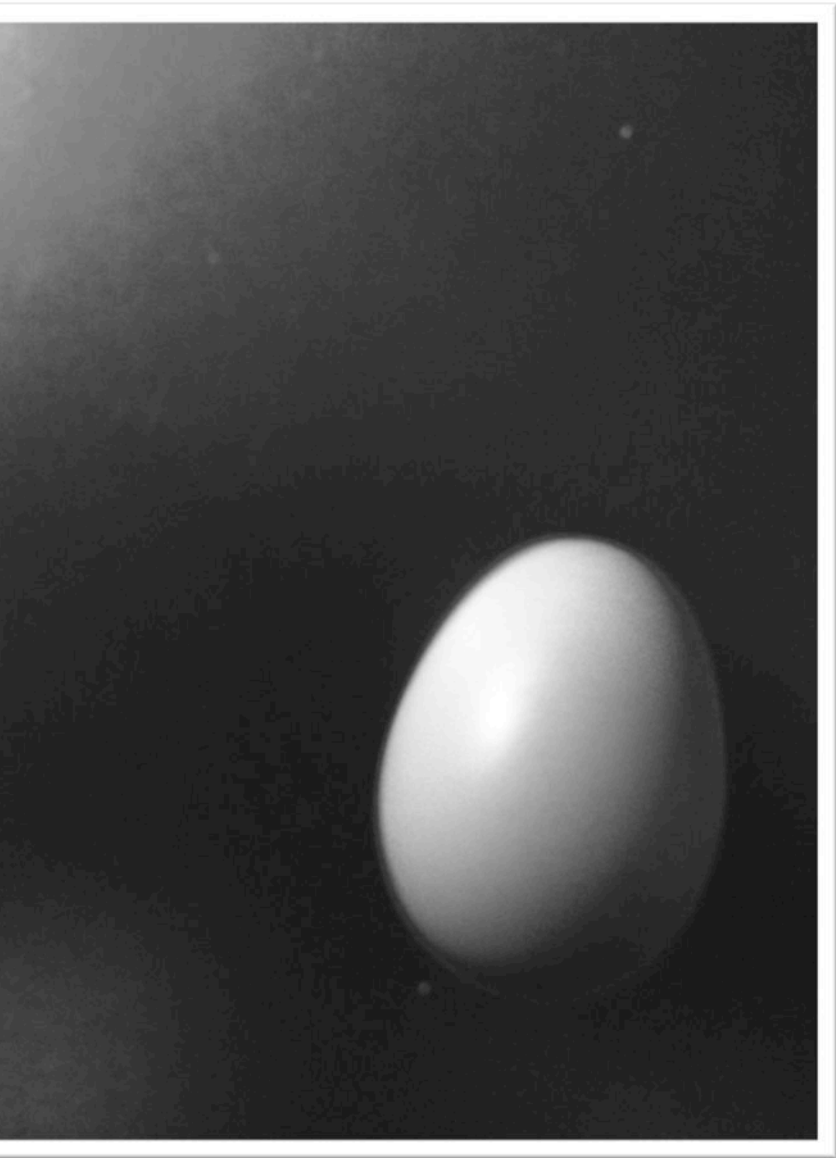
“Frida kahlo inspired white flower halo”



“Kathogram”



“Rayogram”



“The Lone Egg”



“Fotografía de moda”