



CEMENTICLES, CEMENTUM SPURS, & CONCRESCENE

Elva Uvera

CEMENTICLES

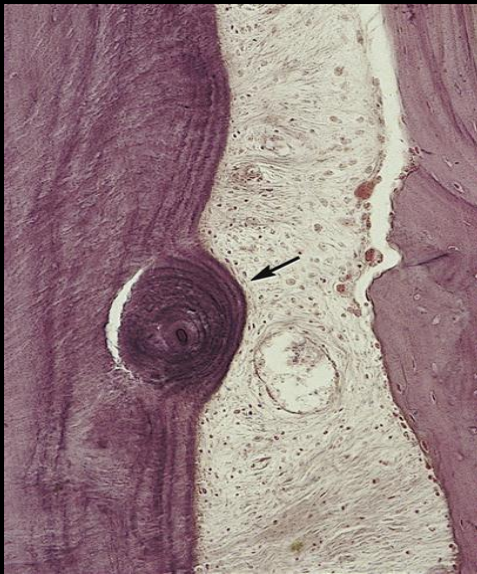
- Mineralized spherical bodies of cementum found either attached to the cemental root surface or lying free in the PDL.
- They form the appositional growth of cementum around cellular debris in the PDL, possibly a result of microtrauma to Sharpey fibers.
- Attaching or fusing from the continued appositional growth of cementum and may be noted on radiographs.

CEMENTUM SPURS

- Found at or near the CEJ
- They are symmetrical spheres of cementum attached to the cemental root surface (similar to enamel pearls).
- Result from irregular deposition of cementum on the root and may be noted on radiographs.

CLINICAL CONSIDERATIONS

- Hard to differentiate from calculus and are not easily removed
- May interfere with periodontal therapy and may need to be removed through periodontal surgery.



CONCRESCENCE

- The union of the root structure of two or more teeth through the cementum only (mainly occurs with permanent maxillary molars)
- Teeth are originally separate but joined with the excessive deposition on one or more teeth after eruption

CLINICAL CONSIDERATION

- May present complications during extraction and endodontic therapy therefore radiographs must be taken prior in the detection of this disturbance.

