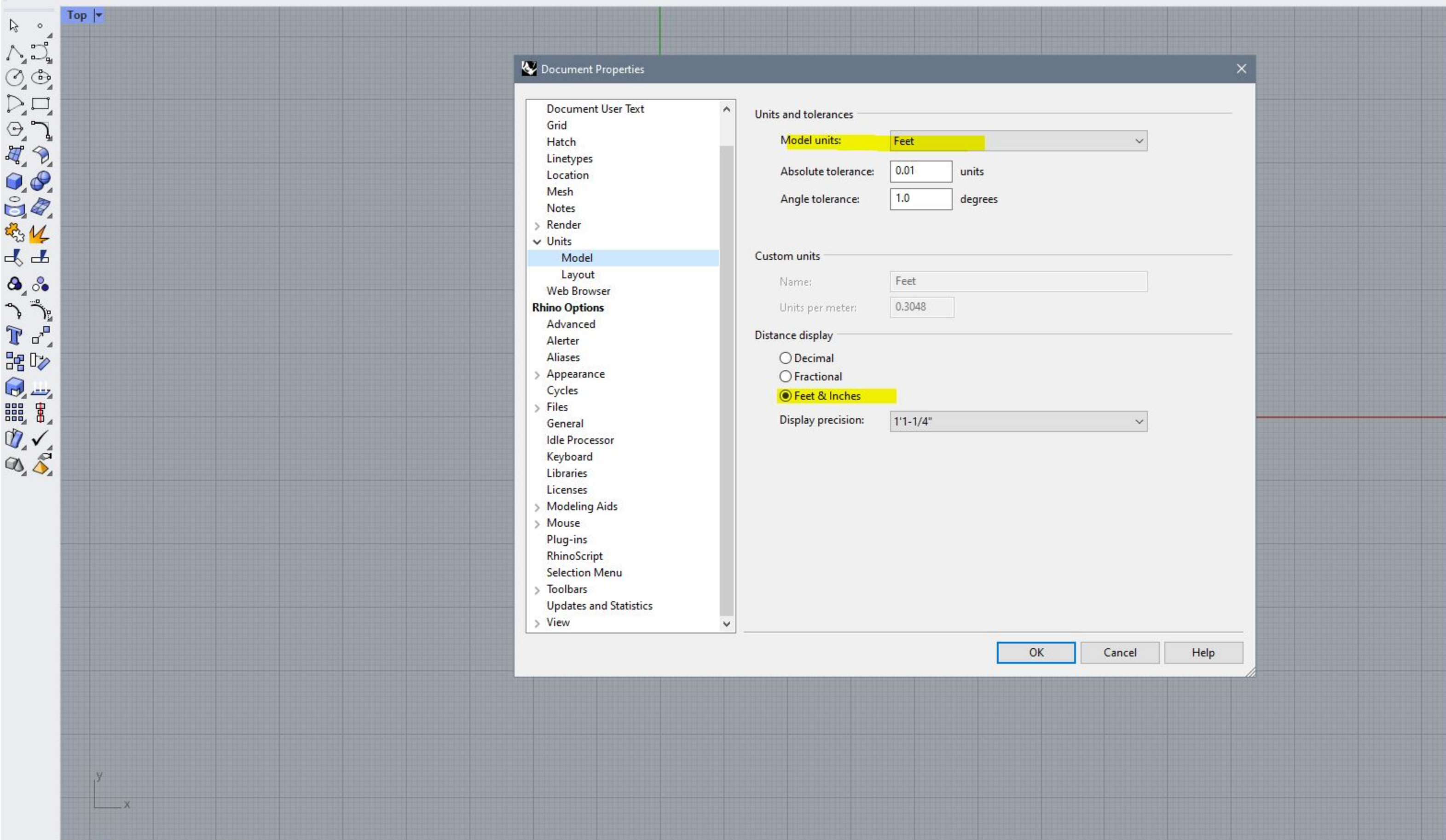


Command: Units

Command: _DocumentPropertiesPage

Command:



Document Properties

- Document User Text
- Grid
- Hatch
- Linetypes
- Location
- Mesh
- Notes
- > Render
- < Units
 - Model
 - Layout
 - Web Browser
- Rhino Options**
 - Advanced
 - Alerter
 - Aliases
 - > Appearance
 - Cycles
 - > Files
 - General
 - Idle Processor
 - Keyboard
 - Libraries
 - Licenses
 - > Modeling Aids
 - > Mouse
 - Plug-ins
 - RhinoScript
 - Selection Menu
 - > Toolbars
 - Updates and Statistics
 - > View

Units and tolerances

Model units: **Feet**

Absolute tolerance: 0.01 units

Angle tolerance: 1.0 degrees

Custom units

Name: Feet

Units per meter: 0.3048

Distance display

Decimal

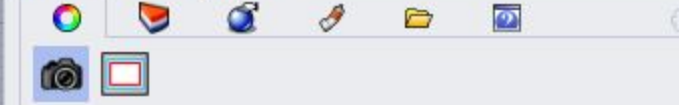
Fractional

Feet & Inches

Display precision: 1'1-1/4"

OK Cancel Help

Properties: View properties



Viewport

Title	Top
Width	1506
Height	906
Projection	Parallel
Locked	<input type="checkbox"/>

Camera

Lens Length(mm)	50.0
Rotation	0.0
X Location	17.68
Y Location	-1.3
Z Location	31.49
Distance to Target	31'6"
Location	Place...

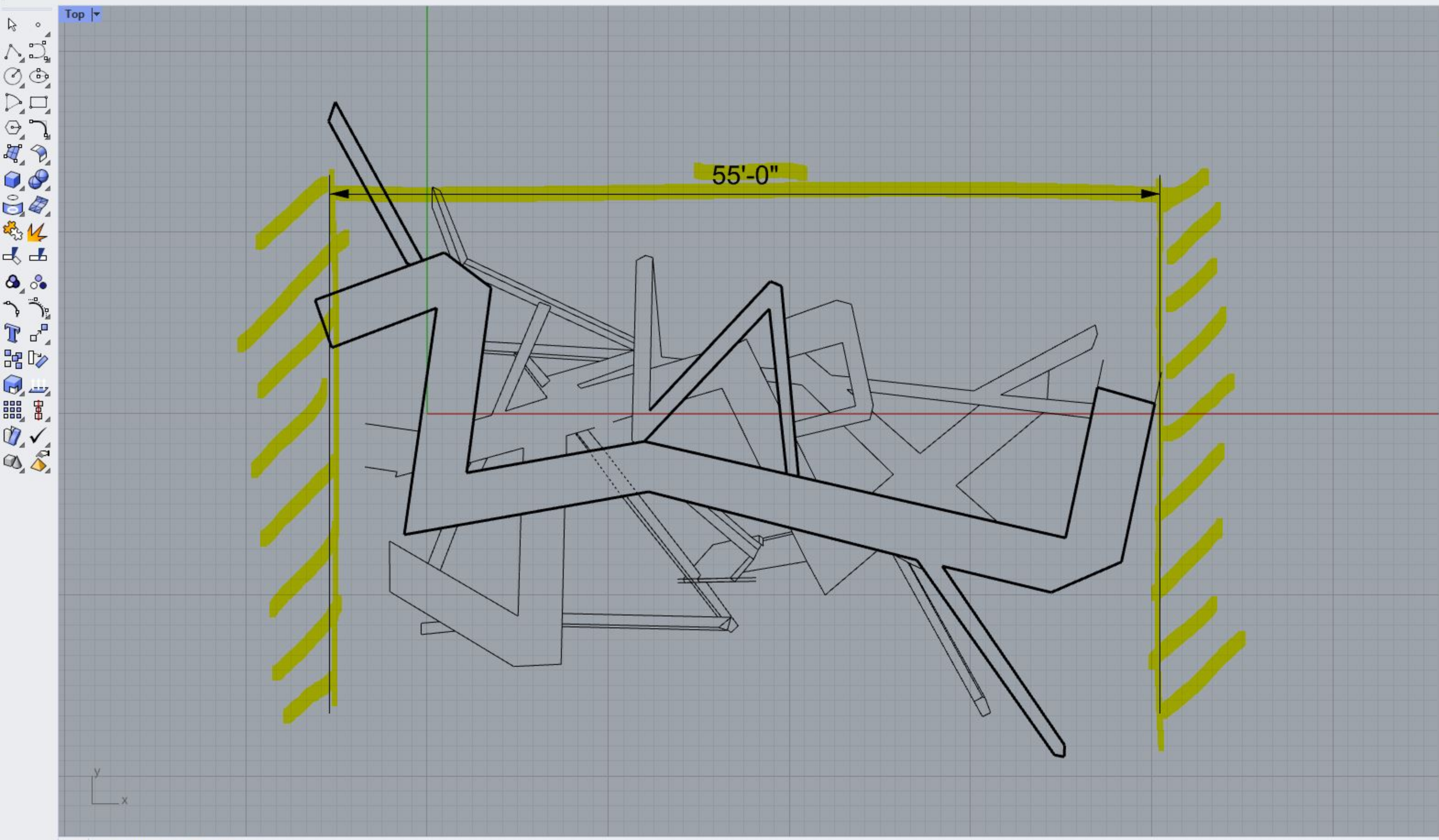
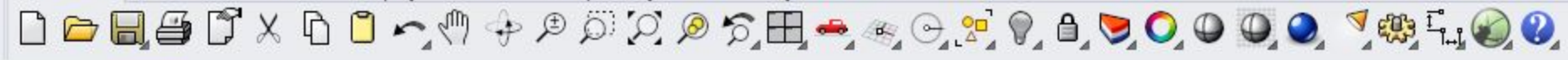
Target

X Target	17.68
Y Target	-1.3
Z Target	0.0
Location	Place...

Wallpaper

Filename	(none)
Show	<input checked="" type="checkbox"/>
Gray	<input checked="" type="checkbox"/>

1 linear dimension added to selection.
1 linear dimension added to selection.
1 linear dimension added to selection.
1 object changed to layer "thin".
Command:



Layers

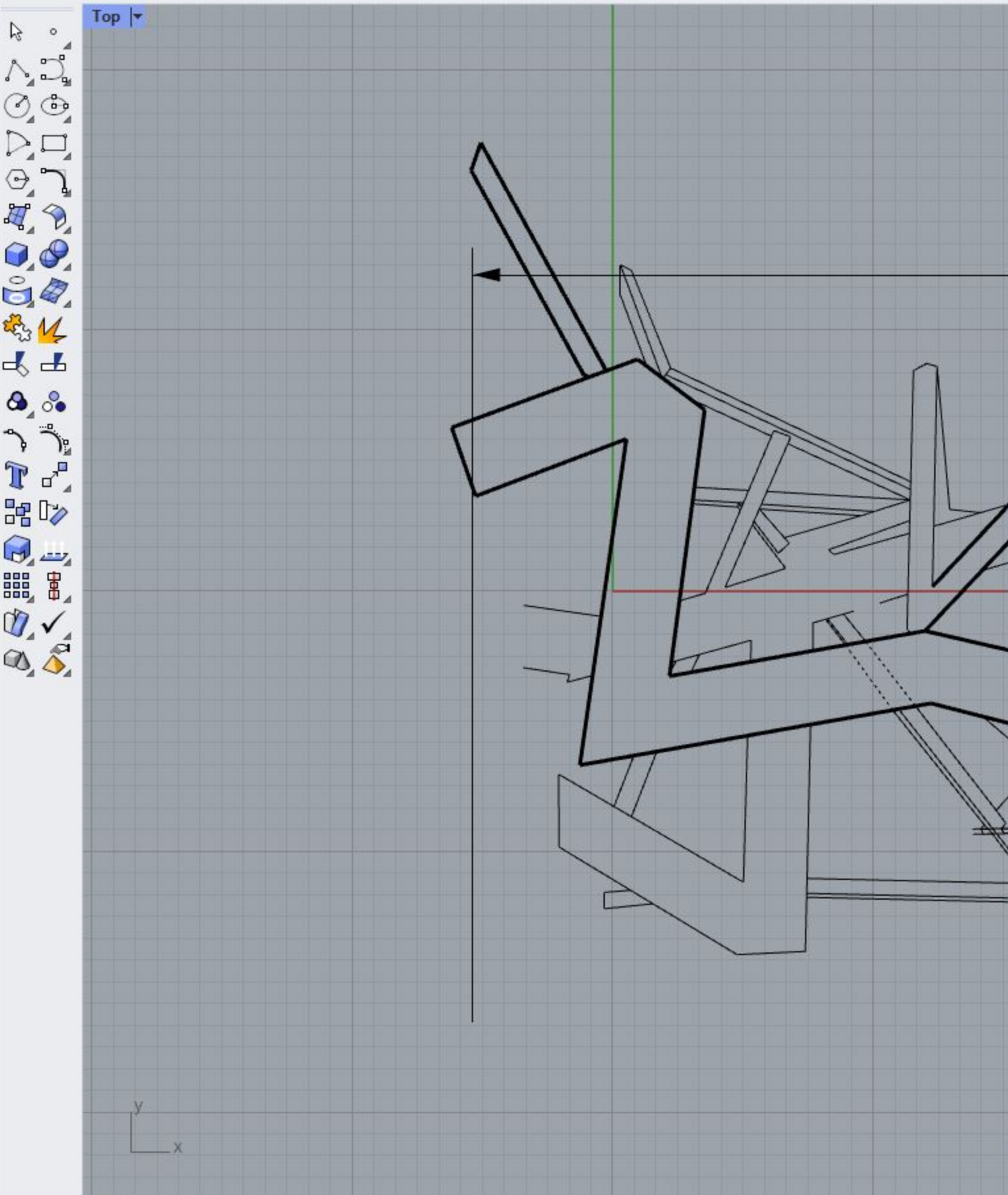
Layer	Material	Linetype	P
thick		Continuous	0.
medium		Continuous	0.
thin		Continuous	0
hidden		Hidden	H

End Near Point Mid Cen Int Perp Tan Quad Knot Vertex Project Disable

CPlane x 15'5-3/4" y -27'11-1/4" z Feet thin Grid Snap Ortho Planar Osnap SmartTrack Gumball Record History Filter Memory use: 741 MB

Drag to define print window <Press Enter when done> (Move)
Second Corner
Drag to define print window <Press Enter when done> (Move)
Command: Print
Command:

Standard CPanes Set View Display Select Viewport Layout Visibility Transform Curve Tools Surface Tools Solid Tools SubD Tools Mesh Tools Render Tools Drafting New in V7



Print Setup

Destination

Image File (PNG, BMP, TIF, ...)

Width 17.0 inches

Height 11.0 inches

Resolution Printer, Normal Quality

200.0 dots / inch

Output Color

Print Color

Display Color

Black and White

View and Output Scale

Top

Viewport

Extents

Window **Set...**

Multiple Layouts

All Layouts

Scale: 2.08%

1/4" = 1'-0"

OR 1/8" OR 3/16"

On Paper 1.0 Inch

=

In Model 4.0 Foot

Margins and Position

Linetypes and Line Widths

Visibility

Print Close Cancel

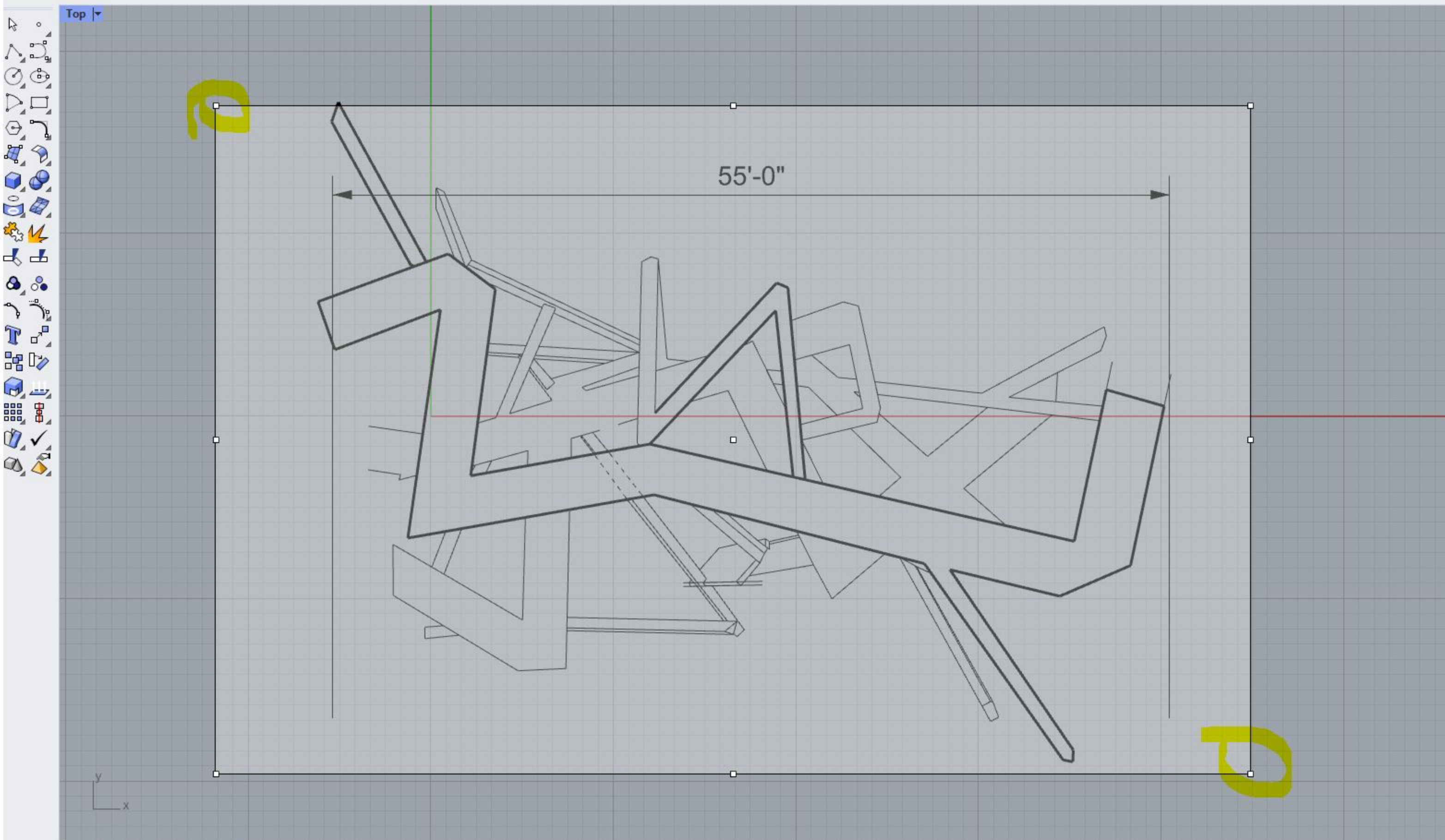
see next page for prompts relating to "Window" output

choose one of the three scales: (a)1/4" or (b)1/8" or (c)3/16" to match the scale of your final physical model as discussed individually.

55'-0"

Command: Print
Command: Print
Drag to define print window <Press Enter when done> (Move)
Second Corner

Drag to define print window <Press Enter when done> (Move): |



Layers

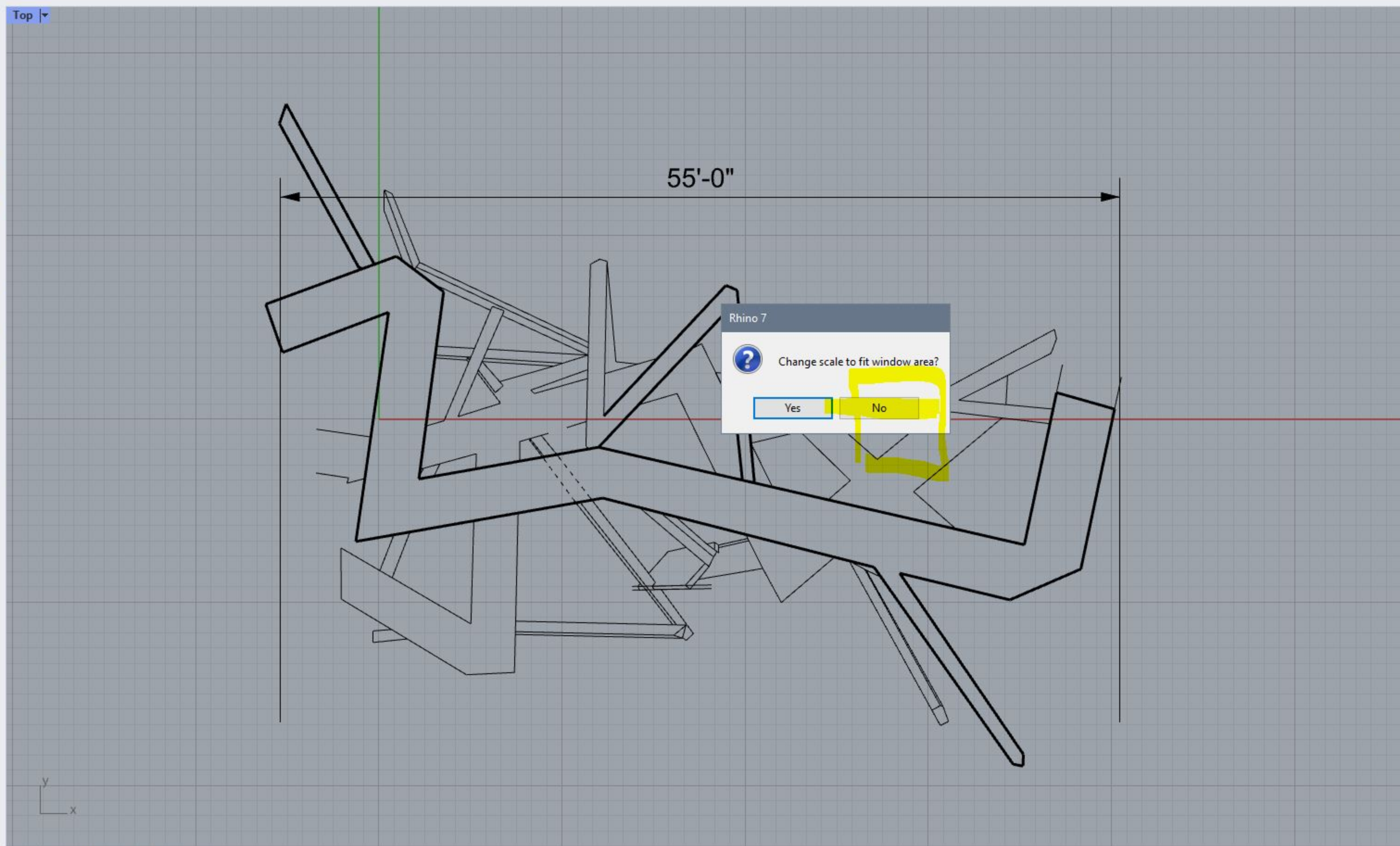
Layer	Material	Linetype	P
thick		Continuous	◆ 0.
medium		Continuous	◆ 0.
thin		Continuous	◆ 0.
hidden		Hidden	◆ H

Drag to define print window <Press Enter when done> (Move)

Command: Print

Drag to define print window <Press Enter when done> (Move)

Second Corner:



Rhino 7

Change scale to fit window area?

Layers

Layer	Material	Linetype
thick		Continuous
medium		Continuous
thin		Continuous
hidden		Hidden