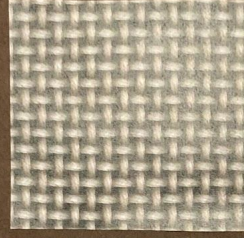


Twill & Tabby Weave

Structures



From researching, there's an abundance of textiles with

patterns that originate from East Asia and China. Like during

the Shang and Zhou Dynasty, bronze burial objects were

found wrapped with remains of textiles. The remains of these

textiles on bronze burial objects are a "part of the patina",

exist as pseudomorphs² in which bronze corrosion has

replaced organic structures."

By Emily Garcia

From researching, there's an abundance of textiles with

patterns that originate from East Asia and China. Like during

the Shang and Zhou Dynasty, bronze burial objects were

found wrapped with remains of textiles. The remains of these

textiles on bronze burial objects are a "part of the patina¹,

exist as pseudomorphs² in which bronze corrosion has

replaced organic structures."

By Emily Garcia

Twill & Tabby Weave

Structures

