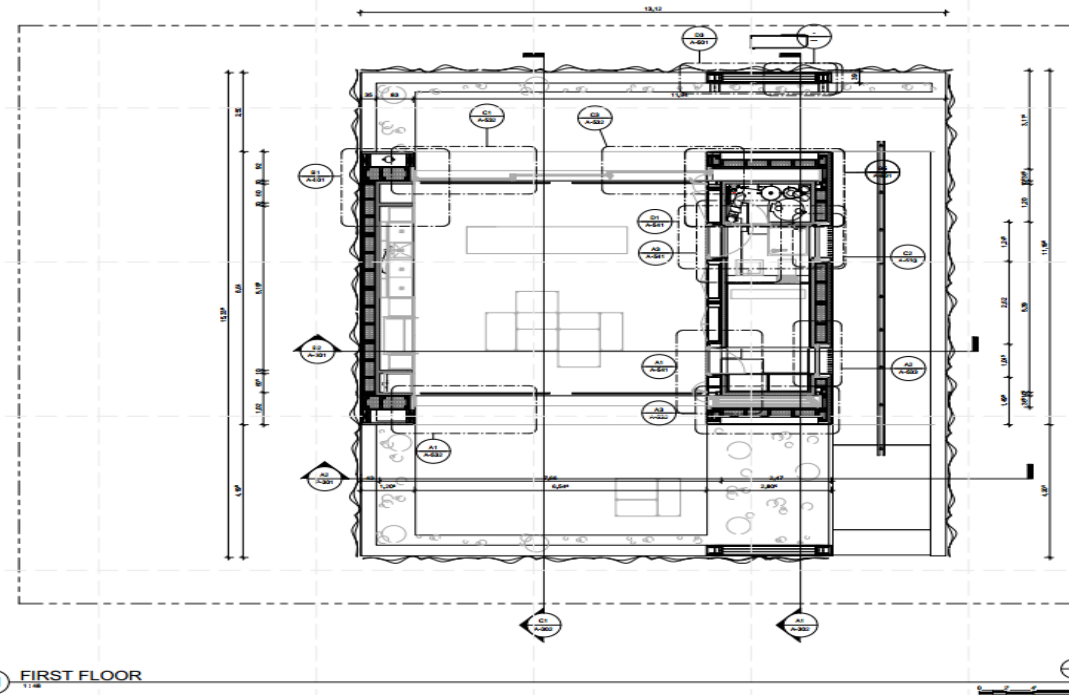
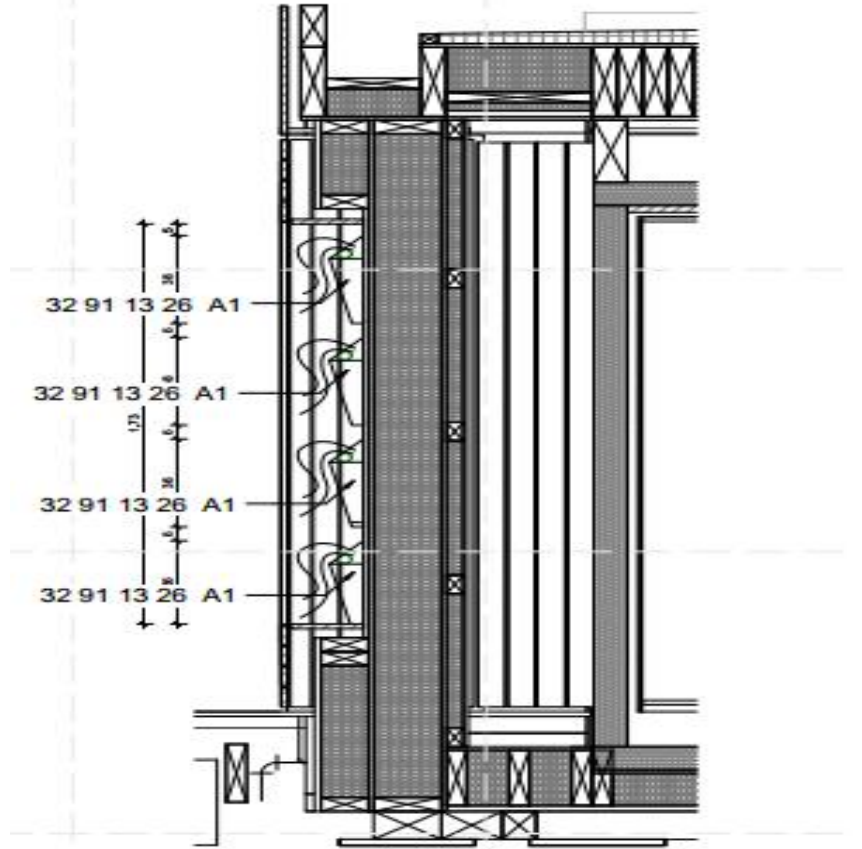


#1: Team Austria



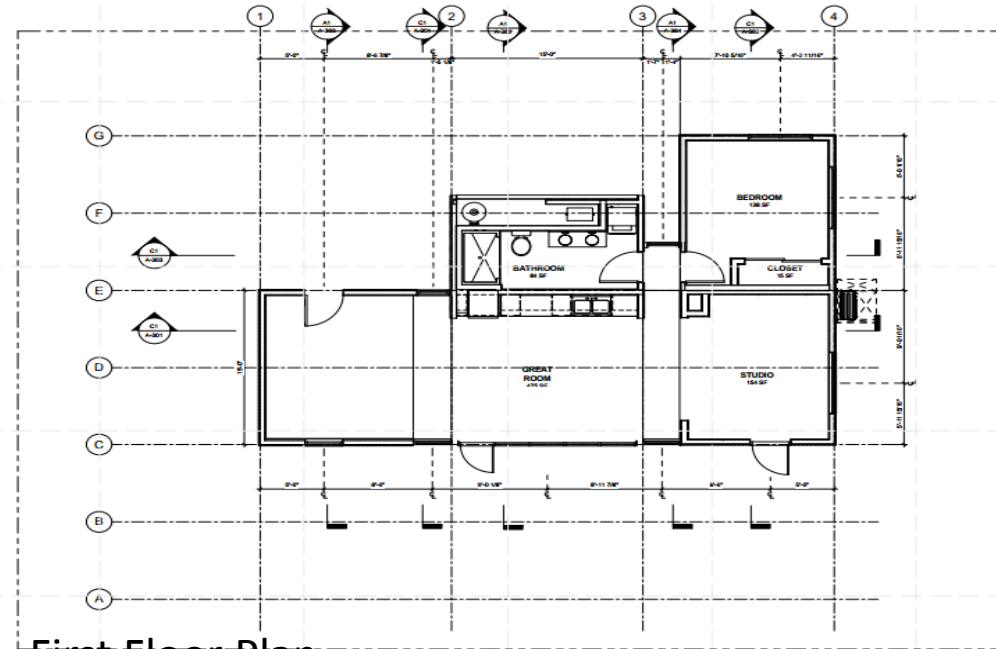
A1 FIRST FLOOR

- I choose this project because it is a simple and easy to transport modern house. And because it is a sustainable house that “generates more power than it uses over the course of a year”.



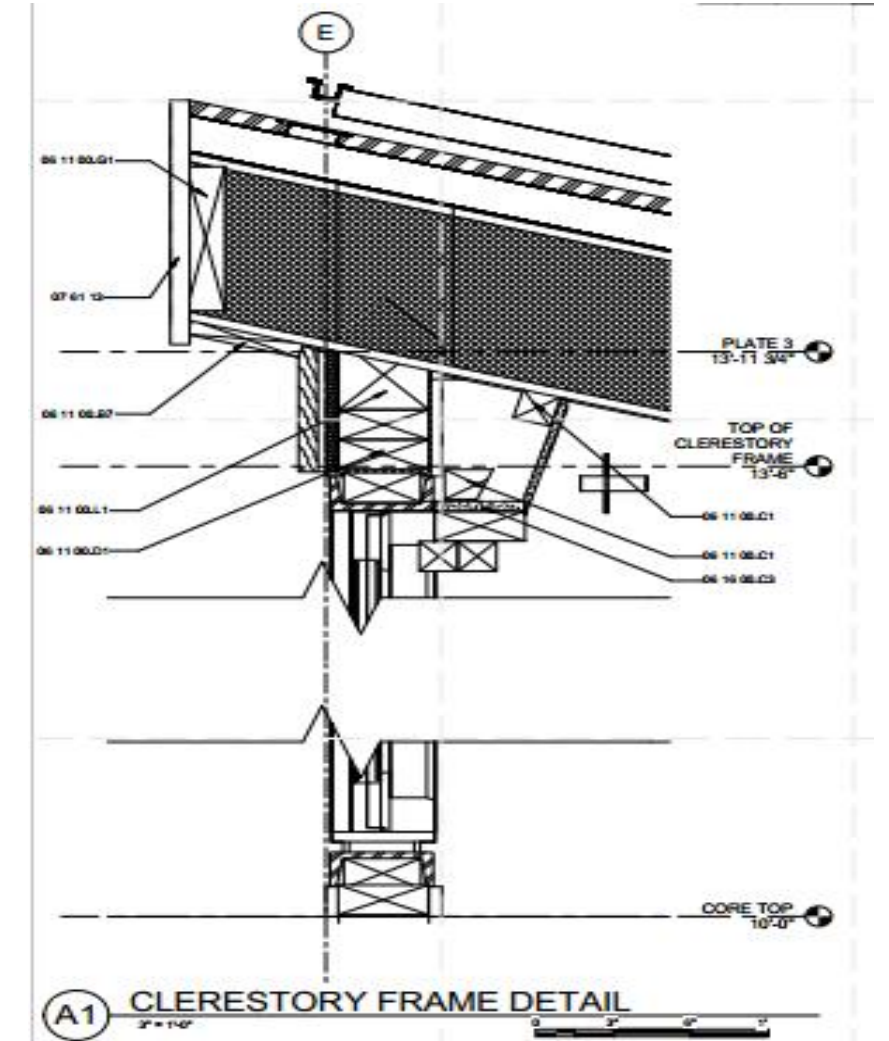
2 L-601_00_Green Wall
1:12

#2: Stanford University

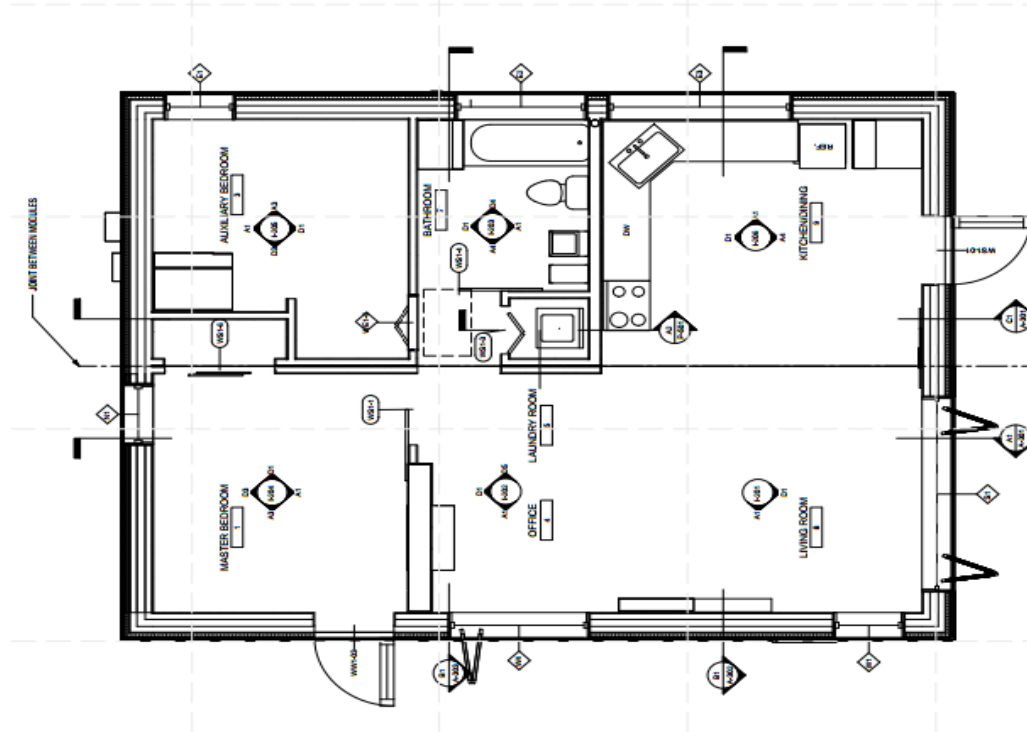


First Floor Plan

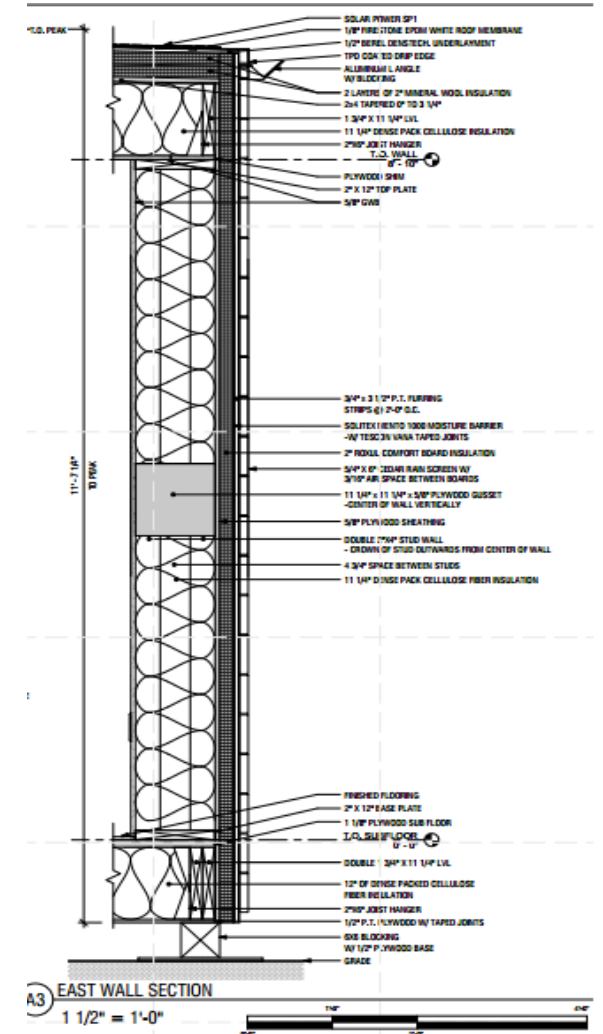
- I like the outcome of the interior and exterior of this prefabricated energy efficient house. It's a combination of simple and modern.



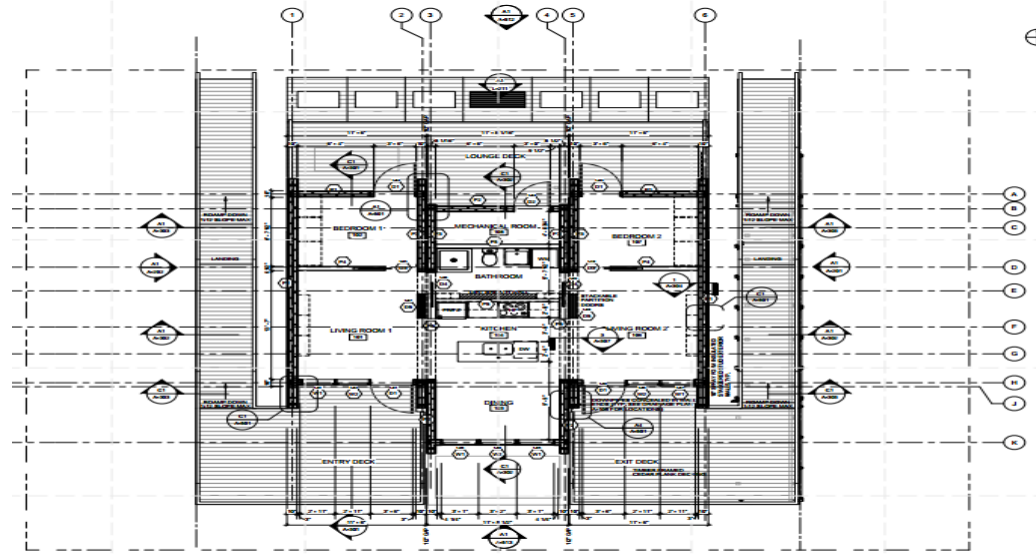
#3: Norwich University



- What I like about this project is its simplicity, efficiency and low cost.

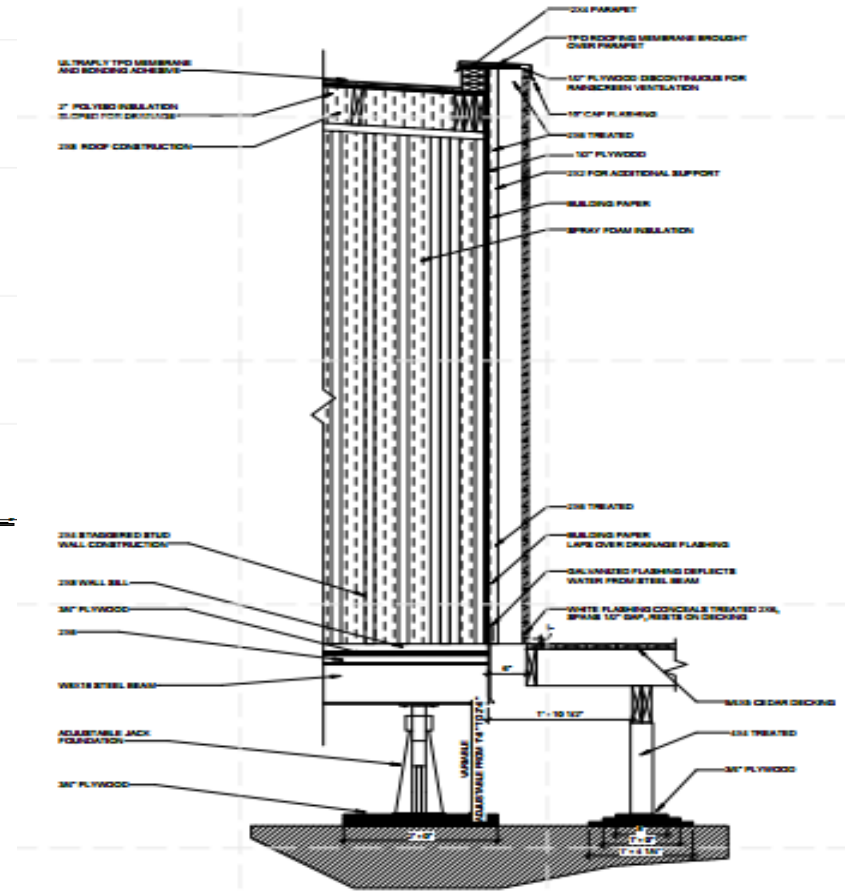


#4: Alberta



C4 FLOOR PLAN
1/4" = 1'-0"

- I like this house because its easy to assemble, transport and its affordable.



A4 A - MECH EXTENSION WALL SECTION
1/4" = 1'-0"

