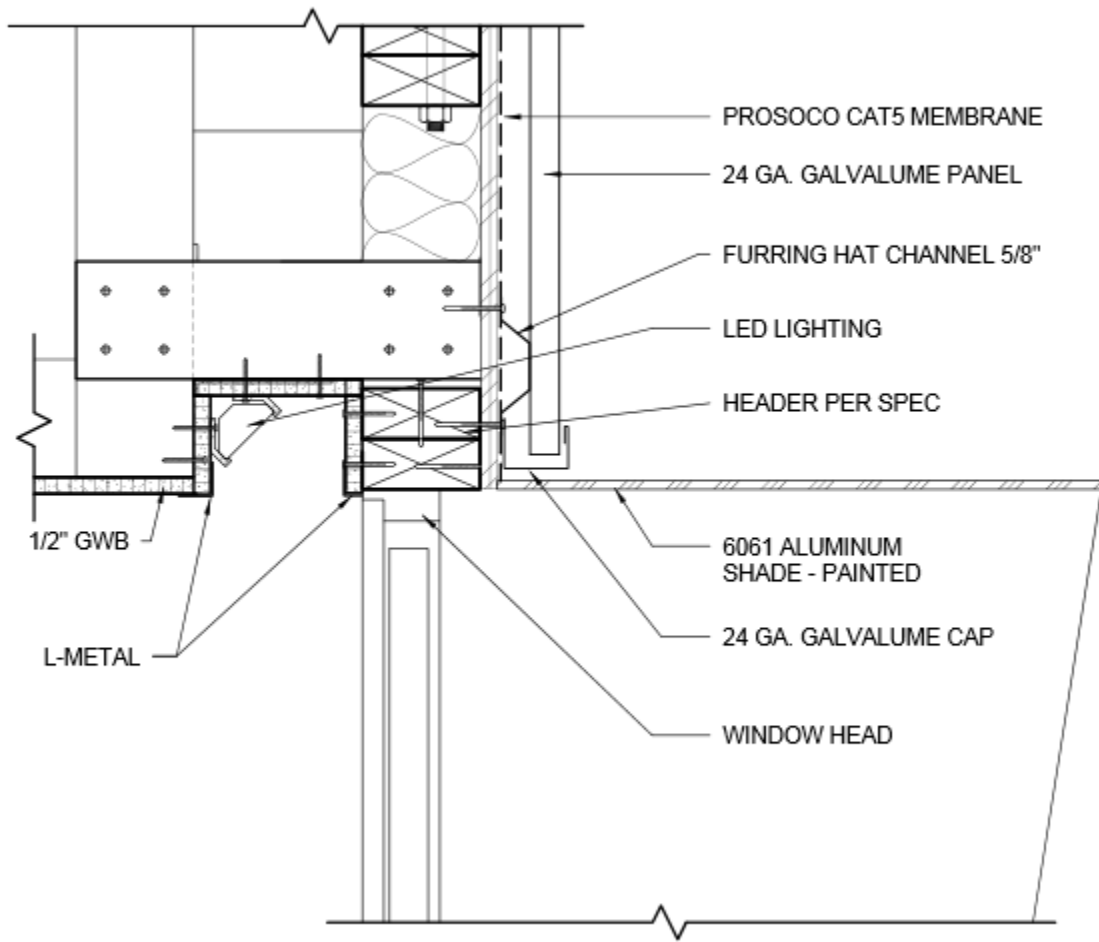


A4 TYPICAL WALL SECTION WITH LIGHT COVE
 1" = 1'-0"





PROSOCO CAT5 MEMBRANE

24 GA. GALVALUME PANEL

FURRING HAT CHANNEL 5/8"

LED LIGHTING

HEADER PER SPEC

1/2" GWB

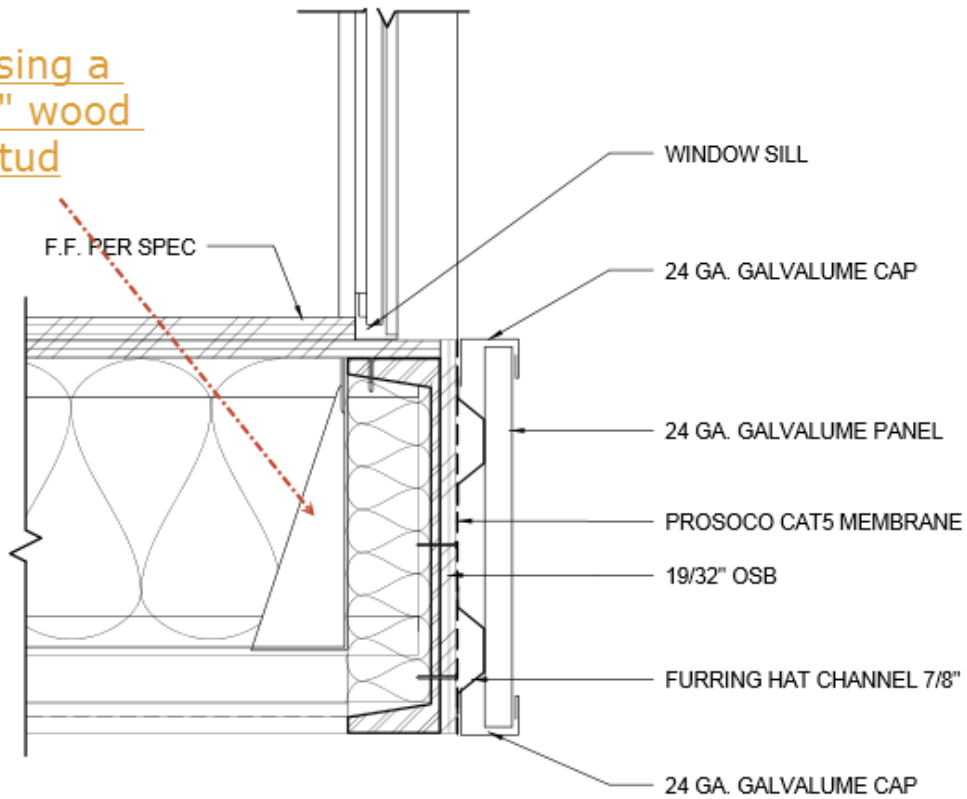
L-METAL

6061 ALUMINUM
SHADE - PAINTED

24 GA. GALVALUME CAP

WINDOW HEAD

missing a
2"x6" wood
stud



A4

WINDOW HEAD/SILL DETAILS

3" = 1'-0"