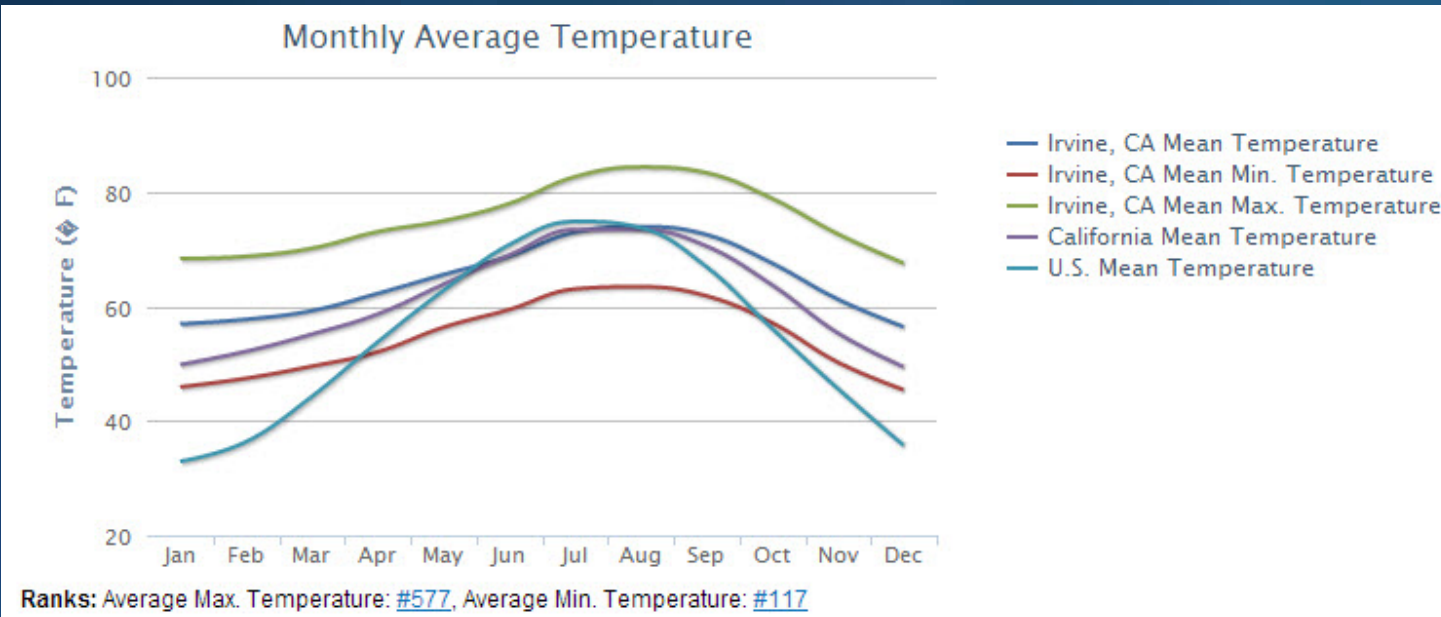


Average Temperature

Annual Average Temperature, #243

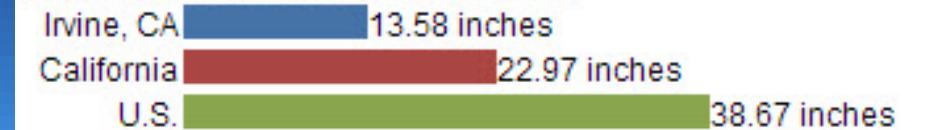


IRVINE CALIFORNIA AVERAGE TEMP. & PERCIPITATION



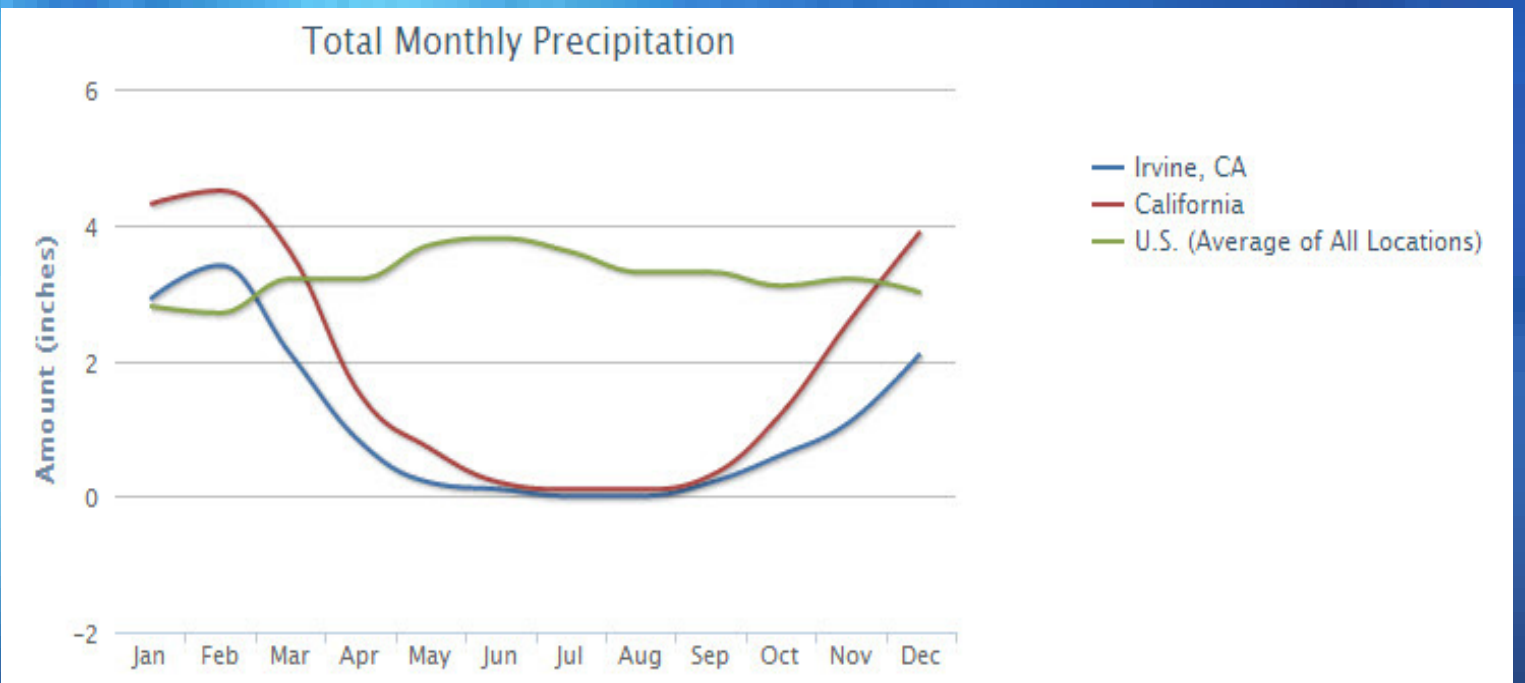
Precipitation

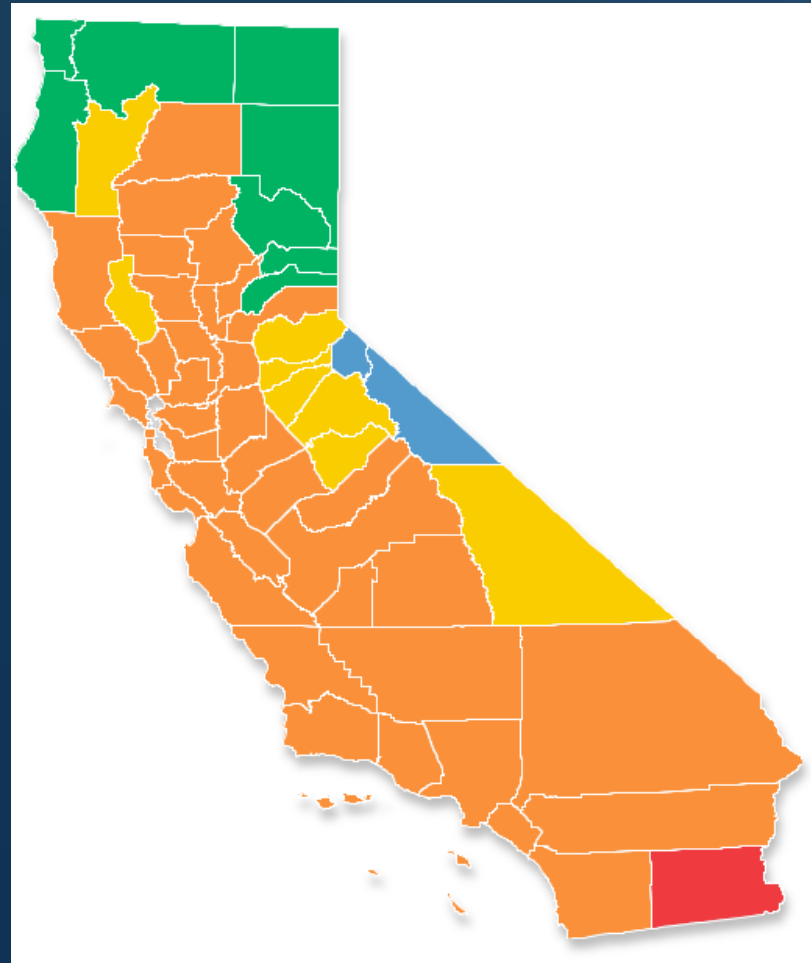
Average Annual Precipitation, #1456



THE TEMPERATURE, SNOW FALL, AND PRECIPITATION INFORMATION ON THIS PAGE WERE CALCULATED FROM THE HISTORICAL DATA OF 18,000+ U.S WEATHER STATIONS FOR THE PERIOD OF TIME FROM 1980 TO 2010.

ON AVERAGE, THE WARMEST MONTH IS AUGUST.
THE HIGHEST RECORDED TEMPERATURE WAS 111°F IN 1963.
ON AVERAGE, THE COOLEST MONTH IS DECEMBER.
THE LOWEST RECORDED TEMPERATURE WAS 18°F IN 1937.
THE MAXIMUM AVERAGE PRECIPITATION OCCURS IN FEBRUARY.





a. R-values are minimums. U-factors and SHGC are maximums. R-19 batts compressed into a nominal 2x6 framing cavity such that the R-value is reduced by R-1 or more shall be marked with the compressed batt R-value in addition to the full thickness R-value.

b. The fenestration U-factor column excludes skylights. The SHGC column applies to all glazed fenestration.

c. "15/19" means R-15 continuous insulated sheathing on the interior or exterior of the home or R-19 cavity insulation at the interior of the basement wall. "10/13" means R-10 continuous insulated sheathing on the interior or exterior of the home or R-13 cavity insulation at the interior of the basement wall.

d. R-5 shall be added to the required slab edge R-values for heated slabs. Insulation depth shall be the depth of the footing or 2 feet, whichever is less in zones 1 through 3 for heated slabs.

e. There are no SHGC requirements in the Marine zone.

f. Basement Wall Insulation is not required in warm-humid locations.

g. Or insulation sufficient to fill the framing cavity. R-19 is minimum.

h. "13+5" means R-13 cavity insulation plus R-5 insulated sheathing. If structural sheathing covers 25 percent or less of the exterior, insulating sheathing is not required where structural sheathing is used. If structural sheathing covers more than 25 percent of exterior, structural sheathing shall be supplemented with insulated sheathing of at least R-2.

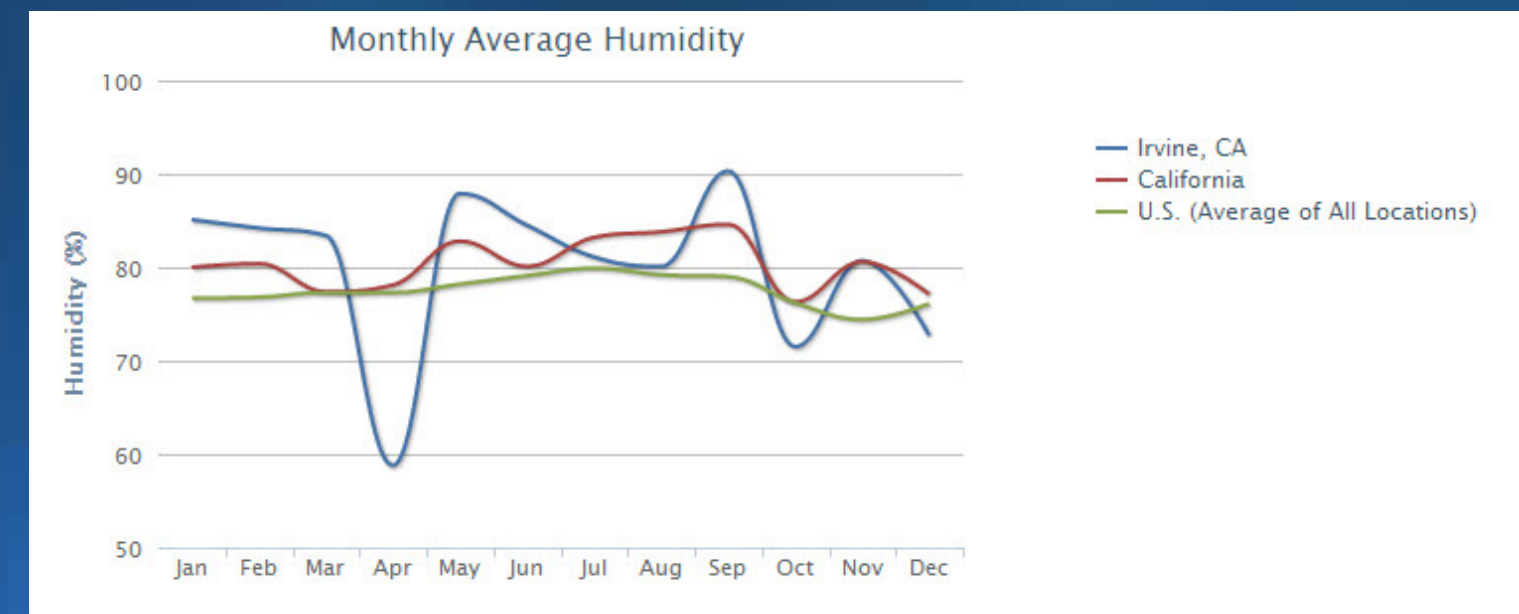
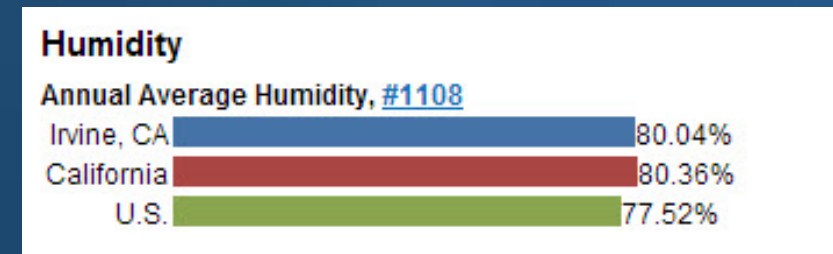
i. The second R-value applies when more than half the insulation is on the interior of the wall.

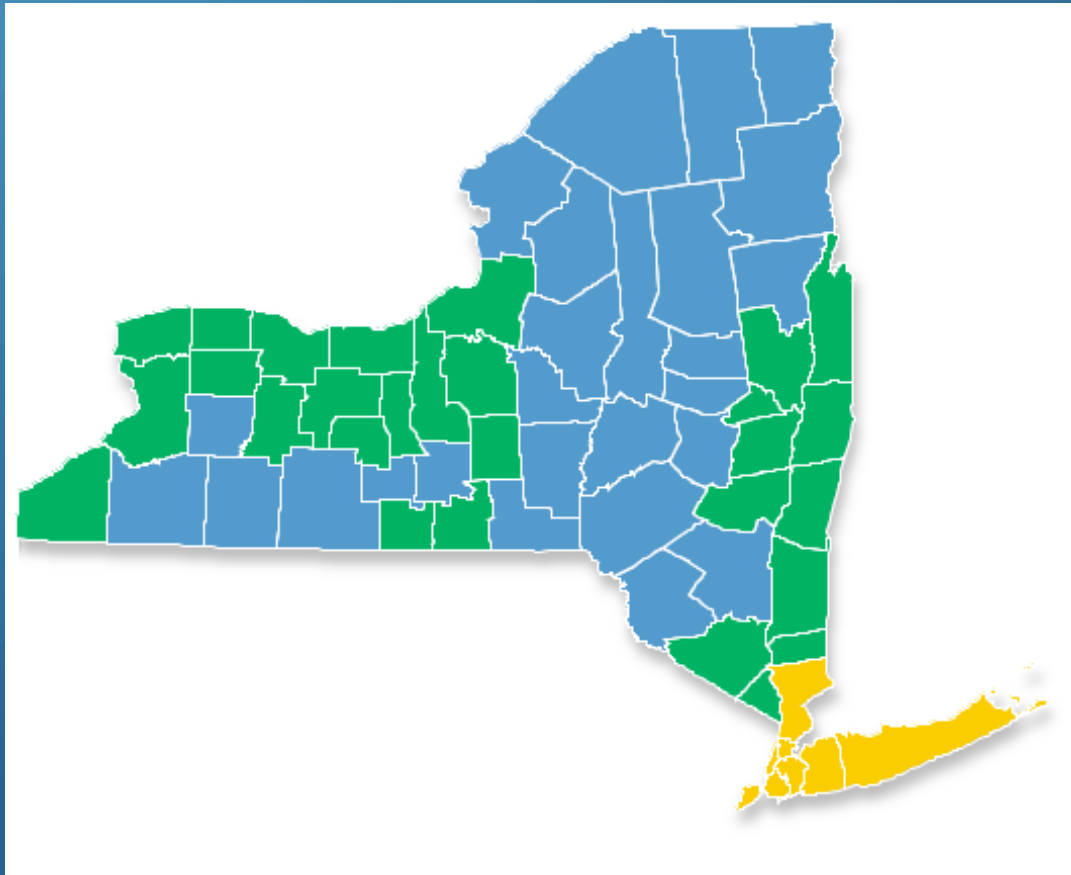
j. For impact rated fenestration complying with Section R301.2.1.2 of the International Residential Code or Section 1608.1.2 of the International Building code, the maximum U-factor shall be 0.75 in Zone 2 and 0.65 in Zone 3.

IRVINE CALIFORNIA HUMIDITY & CLIMATE ZONE

THE HUMIDITY AND WIND SPEED INFORMATION WERE CALCULATED FROM DATA FROM 15,000 WORLDWIDE STATIONS FOR THE PERIOD OF TIME FROM 1980 TO 2010.

Climate Zone 3	
Ceiling R-value	30
Wood Frame Wall R-value	13
Mass Wall R-value ⁱ	5/8
Floor R-value	19
Basement Wall R-value ^c	5/13 ^f
Slab R-value ^d , Depth	0
Crawlspace Wall R-value ^c	5/13
Fenestration U-Factor ^b	0.50 ^j
Skylight U-Factor ^b	0.65
Glazed fenestration SHGC ^{b, e}	0.30





Climate Zone 4 (Except Marine)	
Ceiling R-value	38
Wood Frame Wall R-value	13
Mass Wall R-value ⁱ	5/10
Floor R-value	19
Basement Wall R-value ^c	10/13
Slab R-value ^d , Depth	10, 2 ft
Crawlspace Wall R-value ^c	10/13
Fenestration U-Factor ^b	0.35
Skylight U-Factor ^b	0.60
Glazed fenestration SHGC ^{b, e}	NR

NEW YORK HUMIDITY & CLIMATE ZONE

THE HUMIDITY AND WIND SPEED INFORMATION WERE CALCULATED FROM DATA FROM 15,000 WORLDWIDE STATIONS FOR THE PERIOD OF TIME FROM 1980 TO 2010.

a. R-values are minimums. U-factors and SHGC are maximums. R-19 batts compressed into a nominal 2x6 framing cavity such that the R-value is reduced by R-1 or more shall be marked with the compressed batt R-value in addition to the full thickness R-value.

b. The fenestration U-factor column excludes skylights. The SHGC column applies to all glazed fenestration.

c. "15/19" means R-15 continuous insulated sheathing on the interior or exterior of the home or R-19 cavity insulation at the interior of the basement wall. "10/13" means R-10 continuous insulated sheathing on the interior or exterior of the home or R-13 cavity insulation at the interior of the basement wall.

d. R-5 shall be added to the required slab edge R-values for heated slabs. Insulation depth shall be the depth of the footing or 2 feet, whichever is less in zones 1 through 3 for heated slabs.

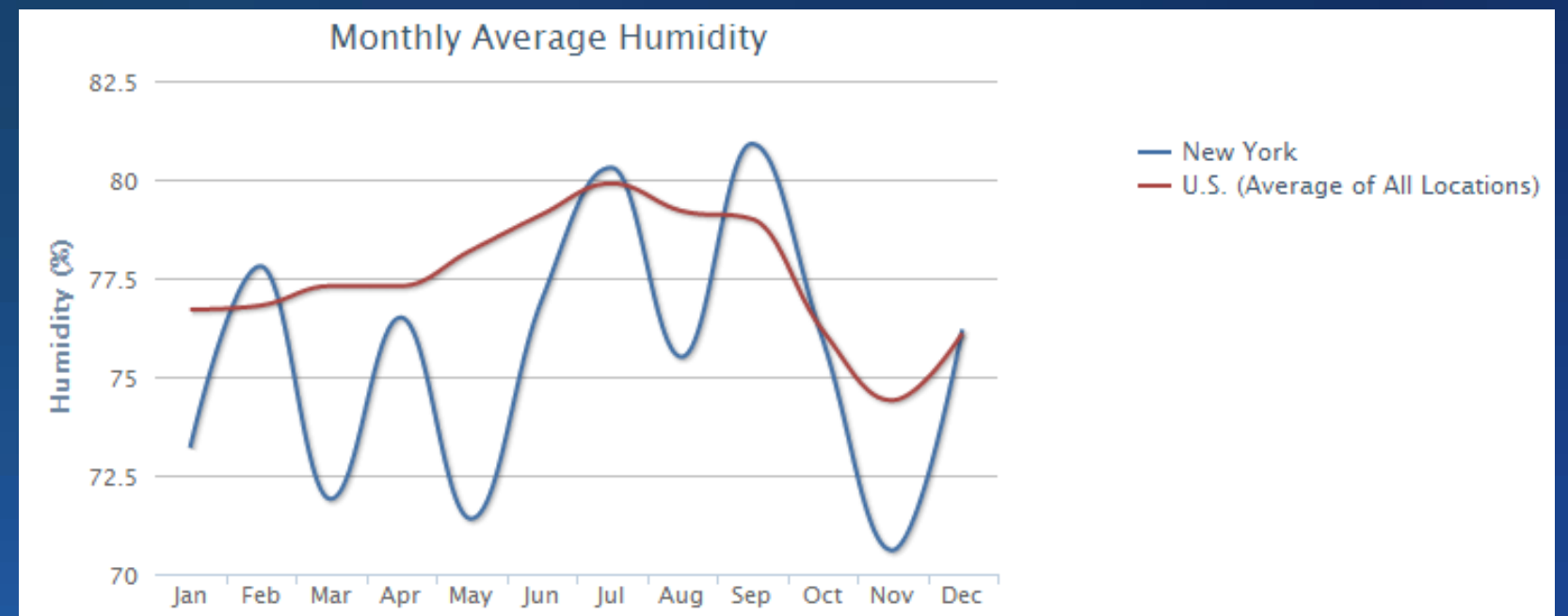
e. There are no SHGC requirements in the Marine zone.

f. Basement Wall Insulation is not required in warm-humid locations.

g. Or insulation sufficient to fill the framing cavity. R-19 is minimum.

Humidity

Annual Average Humidity, #42



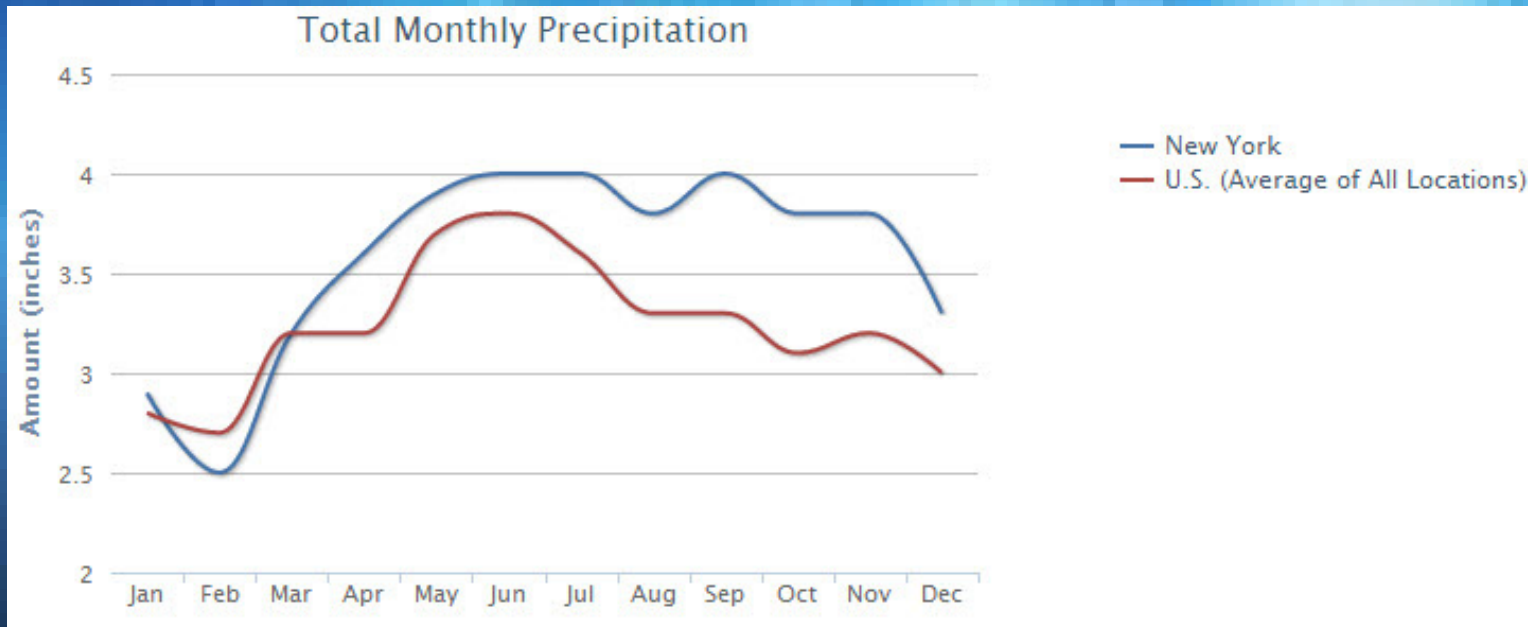
NEW YORK PRECIPITATION & TEMPERATURE

THE HIGHEST RECORDED TEMPERATURE WAS 102°F IN JULY OF 1966.

THE LOWEST RECORDED TEMPERATURE WAS -4°F IN JANUARY OF 1994.

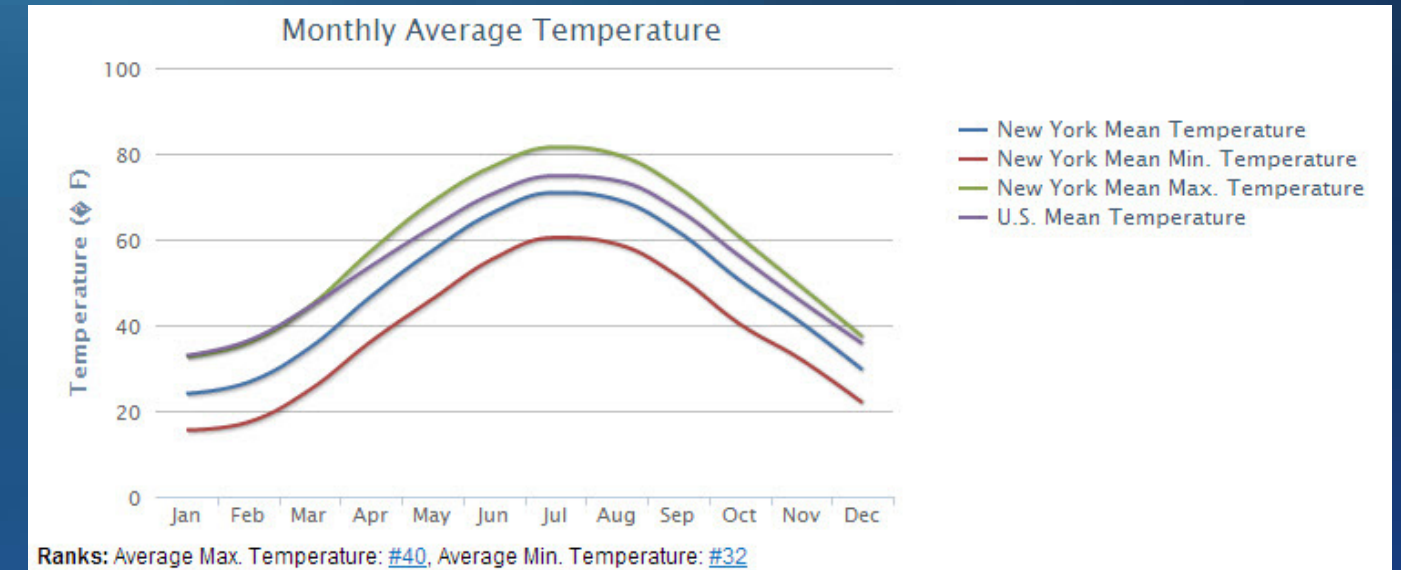
Precipitation

Average Annual Precipitation, #21



Average Temperature

Annual Average Temperature, #36



THE TEMPERATURE, SNOW FALL, AND PRECIPITATION INFORMATION ON THIS PAGE WERE CALCULATED FROM THE HISTORICAL DATA OF 18,000+ U.S WEATHER STATIONS FOR THE PERIOD OF TIME FROM 1980 TO 2010.

RECORDS:

JULY IS THE WARMEST MONTH.

JANUARY IS THE COOLEST MONTH.

MAY IS THE WETTEST MONTH.

FEBRUARY IS THE DRIEST MONTH.