

Middlebury College - Vermont

Manufacturer : Lumos LSX250 Series

Module Dimensions : 64.17" x 41.02" x .38"

Quantity : 26 modules



LSX250 Series

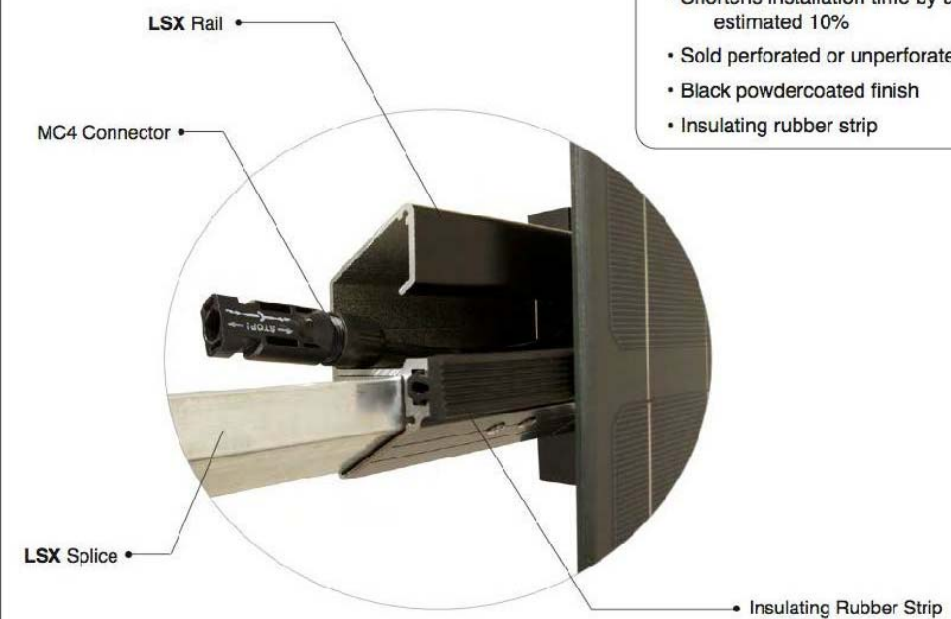
A true systems approach to photovoltaic module and racking integration

Features		Benefits
Frameless Module	→	No aluminum = lower embodied energy Lower profile
No Module Grounding	→	No ground lugs No continuous module equipment ground
Constrained Module Positioning	→	Perfect alignment Speeds install time
Integrated Wireway	→	UV and rodent protection Speeds installation time
Tamper Resistant Stainless Fasteners	→	Keeps your investment working for you
Available with black, clear or white back sheet	→	Aesthetic options for different applications

Our **LSX Rail** is the proprietary racking solution for the **LSX Module System**.

LSX Rail is sold with the insulating rubber strip and pre-installed, pre-positioned fasteners.

- Features:**
- Integrated wireway provides rodent and UV protection
 - Shortens installation time by an estimated 10%
 - Sold perforated or unperforated
 - Black powdercoated finish
 - Insulating rubber strip

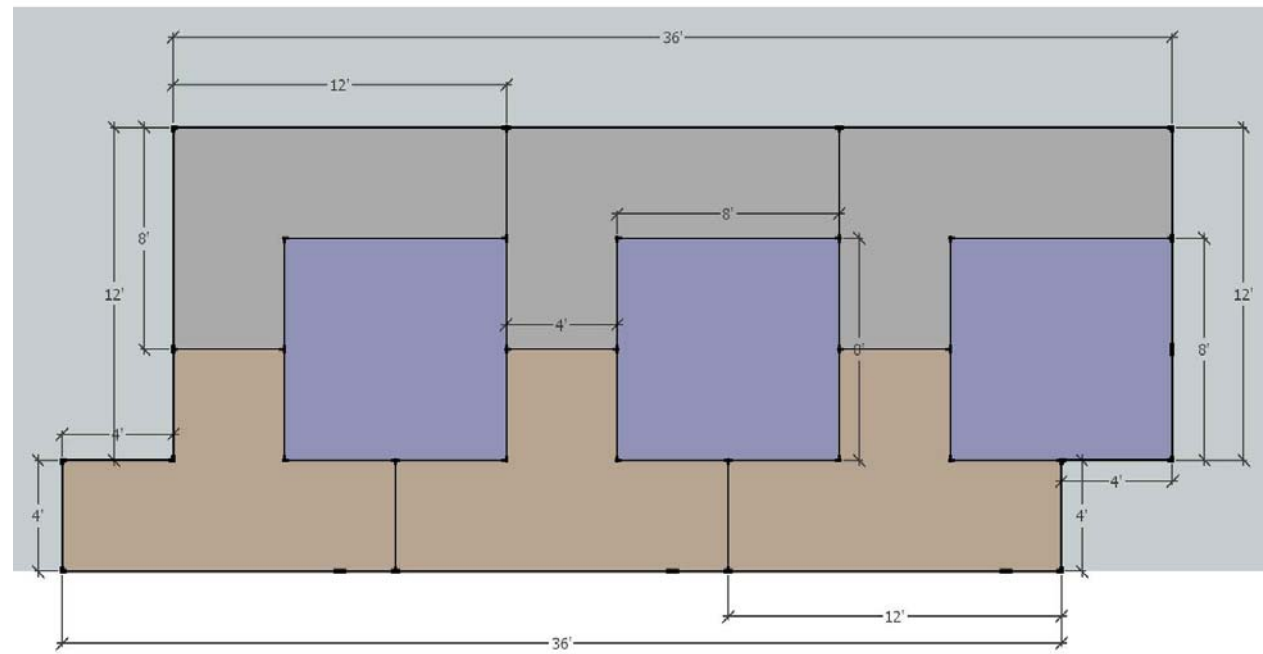


New York City College Of Technology
www.citytech.cuny.edu

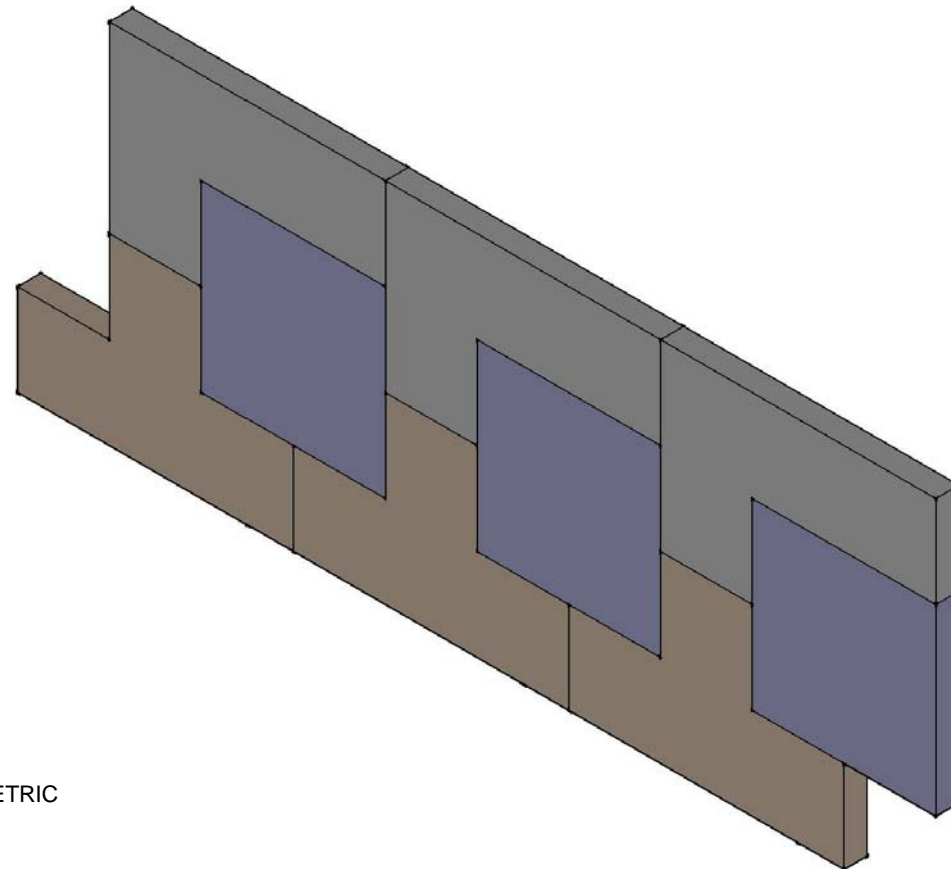
ARCH 3610
Adv. Detailing

No.	Description	Date

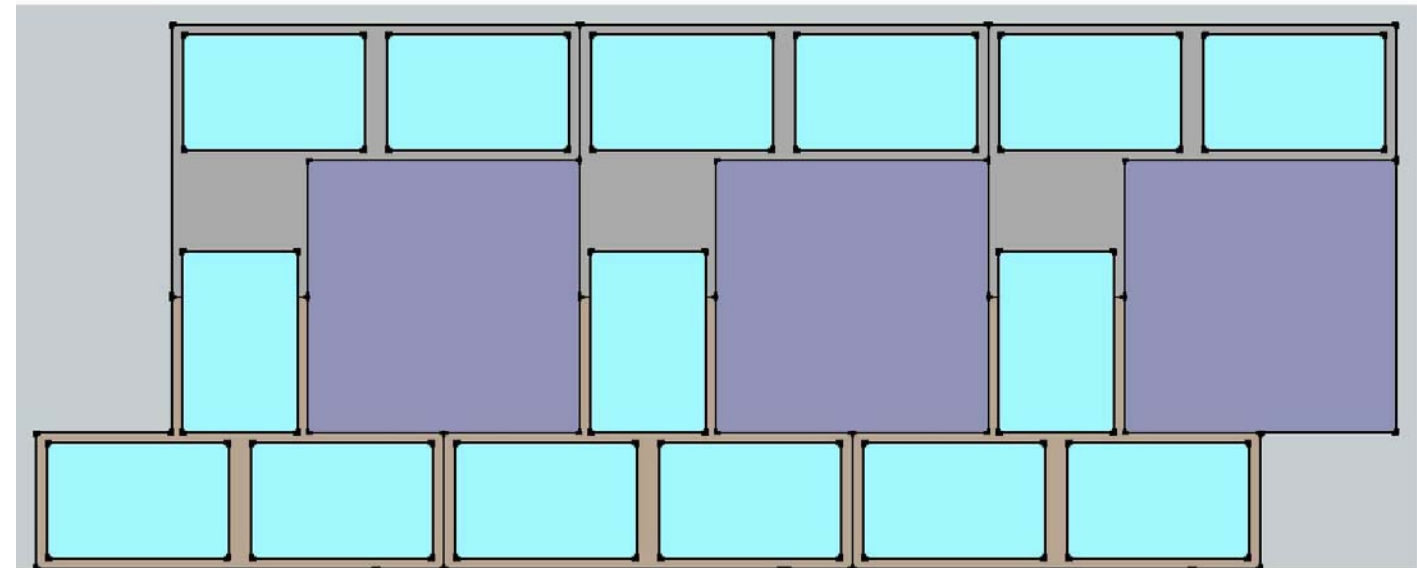
Assignment 5		
Project number	5	A101
Date	02/16/14	
Drawn by	Author	Scale
Checked by	Checker	



FACADE PANEL DESIGN



FACADE ISOMETRIC

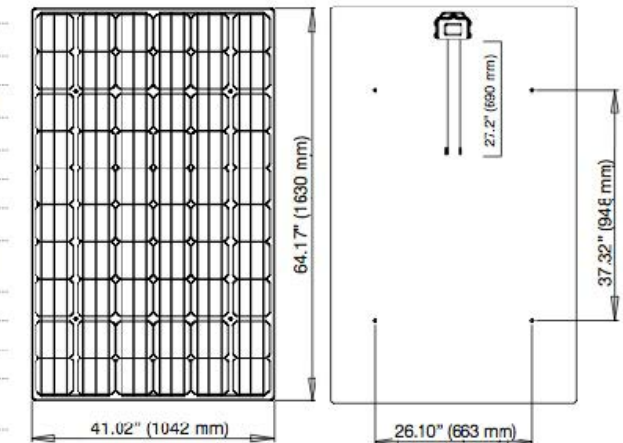


FACADE SOLAR PANEL PLACEMENT

LSX250 Series

Mechanical Specifications

Solar Cell	Monocrystalline 6" x 6" (156mm x 156mm)
Number of Cells	60 (6 x 10)
Internal Bypass Diodes	6
Module Dimensions	64.17" x 41.02" x 1.38" (1630 mm x 1042 mm x 35 mm)
Module Area	18.28 ft ² (1.70 m ²)
Module Weight	62.6 lbs (28.4 kg)
Front Glass	.24" (6mm) Tempered Glass
Backsheet	Black, White, and Clear
LSX Rail Assembly Options	3-4 Portrait Module Lengths (Black Powdercoated Finish) 3 Landscape Module Lengths (Black Powdercoated Finish)
Output Cables	12 Awg. (690 mm) PV Wire with MC4 Connectors
Static Load	50 PSF (2400 Pa) Portrait
Hail	Maximum Diameter 1" (25 mm) at 52 mph (23 m/s)
Warranty	12 years at 90% of the rated power output 25 years at 80% of the rated power output
Certifications	ETL per UL-1703 & CEC listed



New York City College Of Technology

www.citytech.cuny.edu

ARCH 3610
Adv. Detailing

No.	Description	Date

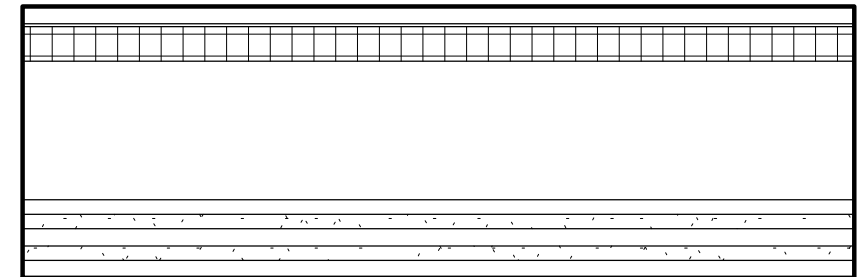
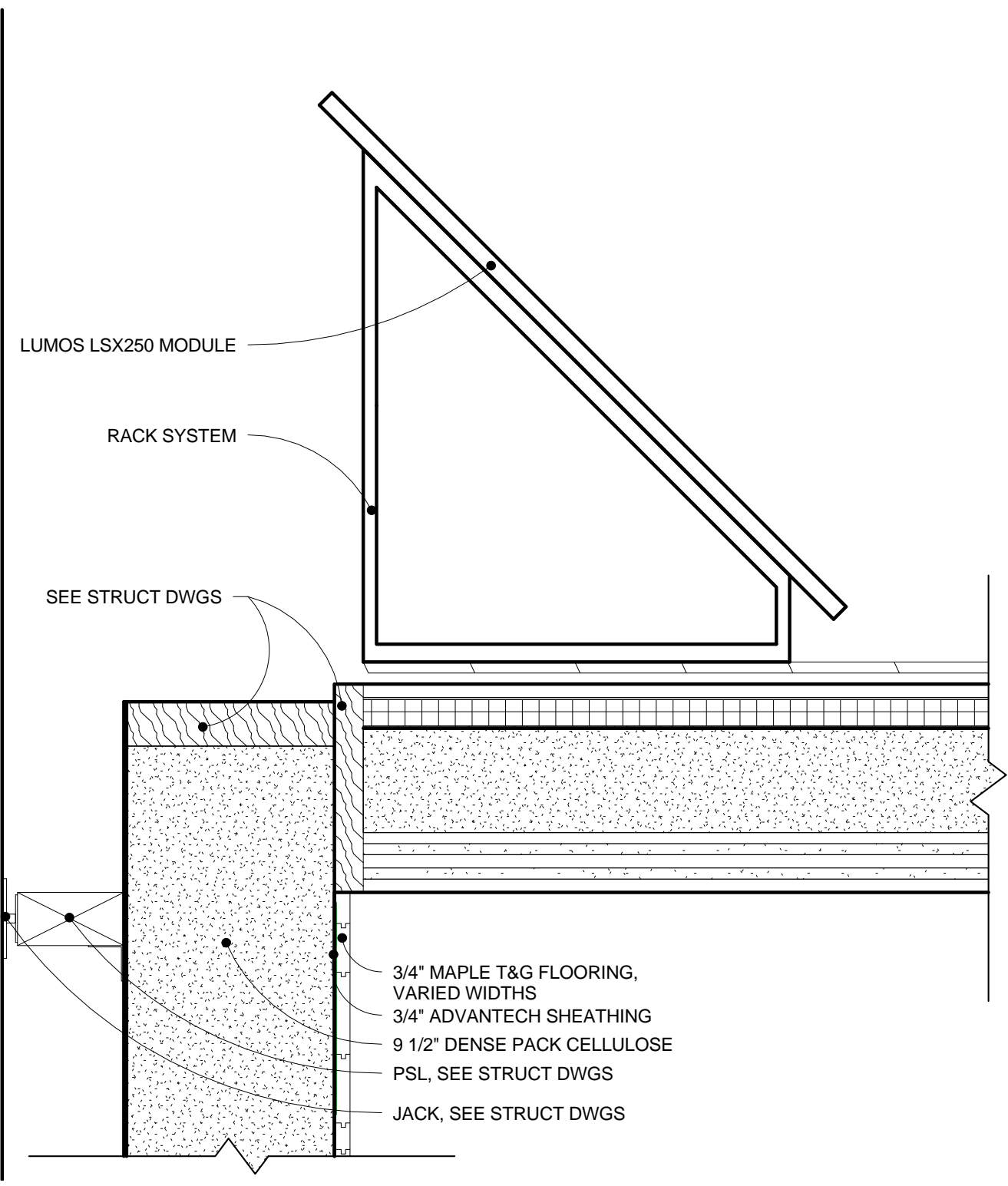
Assignment 5

Project number 5
Date 02/16/14
Drawn by Author
Checked by Checker

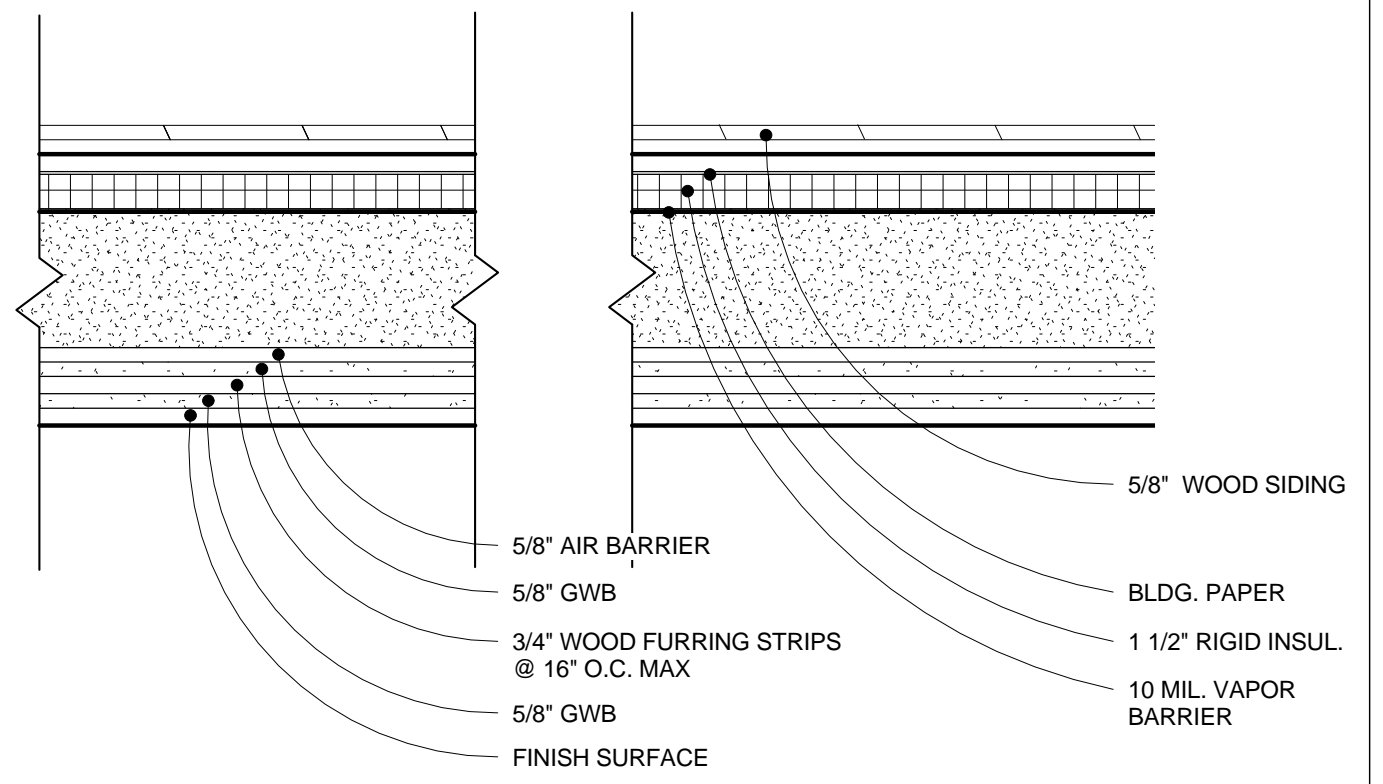
A102

Scale

1 Section 1
1 1/2" = 1'-0"



Wall
1 1/2" = 1'-0"



New York City College Of Technology

www.citytech.cuny.edu

ARCH 3610
Adv. Detailing

No.	Description	Date

Assignment 5

Project number	5
Date	02/16/14
Drawn by	Author
Checked by	Checker

A103
Scale 1 1/2" = 1'-0"

2/18/2014 7:36:25 PM