

Dynamic Augmented Living Environment

U.S. DEPARTMENT OF ENERGY
SOLAR DECATHLON 2013
WWW.SOLARDECATHLON.GOV

TEAM SCI-ARC / CALTECH



SOUTHERN CALIFORNIA INSTITUTE OF ARCHITECTURE
960 EAST 3RD STREET
LOS ANGELES, CA 90013

CALIFORNIA INSTITUTE OF TECHNOLOGY
1200 EAST CALIFORNIA BOULEVARD
PASADENA, CA 91125

scical2013@gmail.com
www.scical2013.com

CONSULTANTS

STRUCTURAL ENGINEERS
BURO HAPPOLD CONSULTING ENGINEERS, INC.
9601 JEFFERSON BLVD. STE B
CULVER CITY, CA 90232.
TEL: 310.945.4800

BUILDING CONSTRUCTION
RJC BUILDERS, INC.
3509 W 6TH ST.
LOS ANGELES, CA 90020
TEL: 213.388.9327

SUBMISSIONS:

DESIGN DOCUMENTATION SET	10/11/2012
CONSTRUCTION DOCUMENTATION SET	02/14/2013
AS-BUILT SET	08/22/2013

REVISIONS:

DATE: 08.22.2013

LOT NUMBER: #101

DRAWN BY: SCI-ARC / CALTECH

CHECKED BY: CHI HANG LO

COPYRIGHT: NONE

SHEET TITLE

GENERAL FLOOR PLAN

A-100

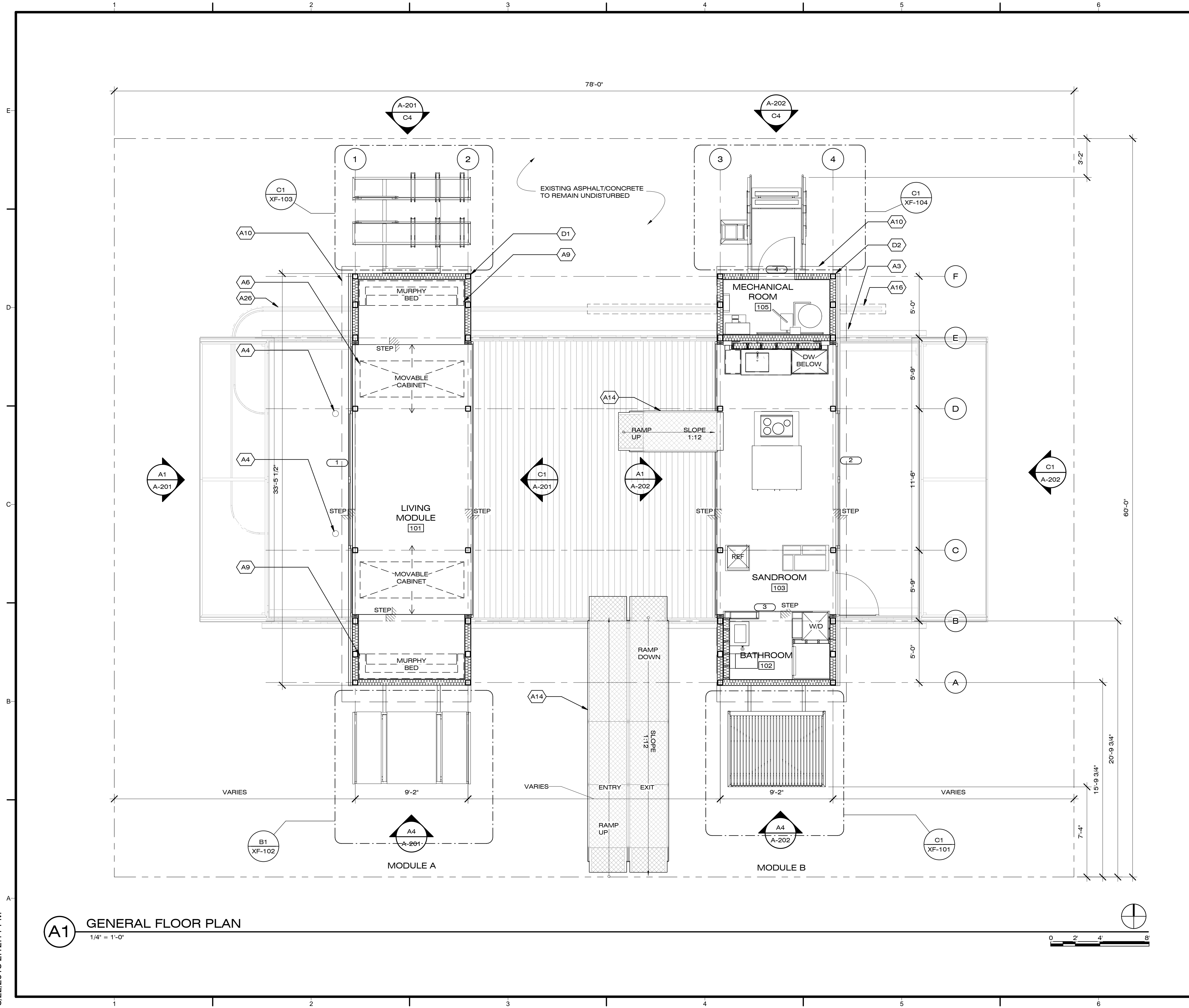
GENERAL SHEET NOTES

1. MODULE LOCATIONS VARY
2. LOCATION AND DATUM ON GRADE ARE APPROXIMATE. TO BE V. I. F.
3. ALL RAMPS ARE TEMPORARY ADA RAMPS FOR EXHIBITION ONLY

REFERENCE KEYNOTES

SHEET KEYNOTES

- A3 LANDSCAPE DECK SEE XC-001
- A4 WATER BLADDER TANKS LOCATION BENEATH LANDSCAPE DECK SEE P-101
- A6 MOVABLE CABINET DOTTED FOR CLARITY SEE XB-001
- A9 MURPHY BED SEE XB-102
- A10 CANOPY SHOWN DOTTED FOR CLARITY SEE XA-001
- A14 TEMPORARY RAMP FOR ADA ACCESS
- A16 CABLE/HOSE CARRIER DOTTED FOR CLARITY SEE XE-001
- A26 MODULE A 317 SF
- D1 MODULE B 305 SF
- D2



A1 GENERAL FLOOR PLAN
1/4" = 1'-0"

8/22/2013 2:12:11 PM