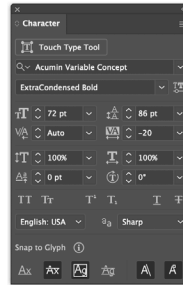


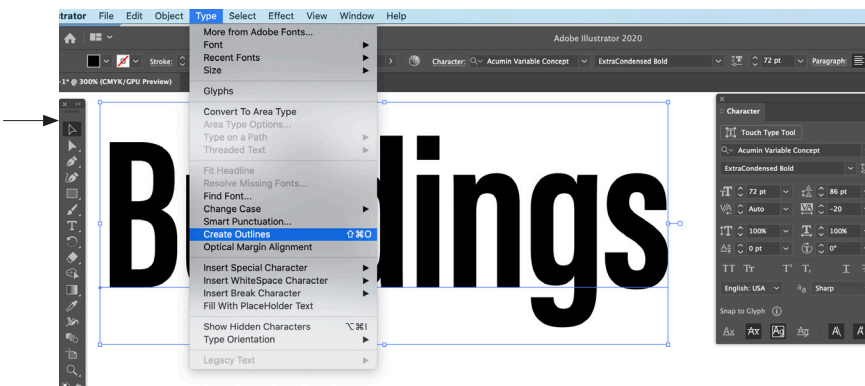
Technique: How to create an outline from text in Illustrator

In **Illustrator** you can change text into outlines. This tool allows you to then manipulate the letters (or words) as objects rather than editable text.

Buildings



Once you have your word. Make sure that you give **all** the required typographical characteristics: typeface, case, style (variations in, weight, width, posture, etc), tracking, kerning, leading.



Once **absolutely** completed, then select word with black arrow - this is the *selection tool*.

Go to *Type > Create Outlines*



This is now an **image**. It is not editable text anymore

With the *white arrow* - this is the *direct selection tool*, you can select specific letters and specific points to move.



In here for example, **only** the top points of the "i" were selected then moved up. The same was done with the other letters.